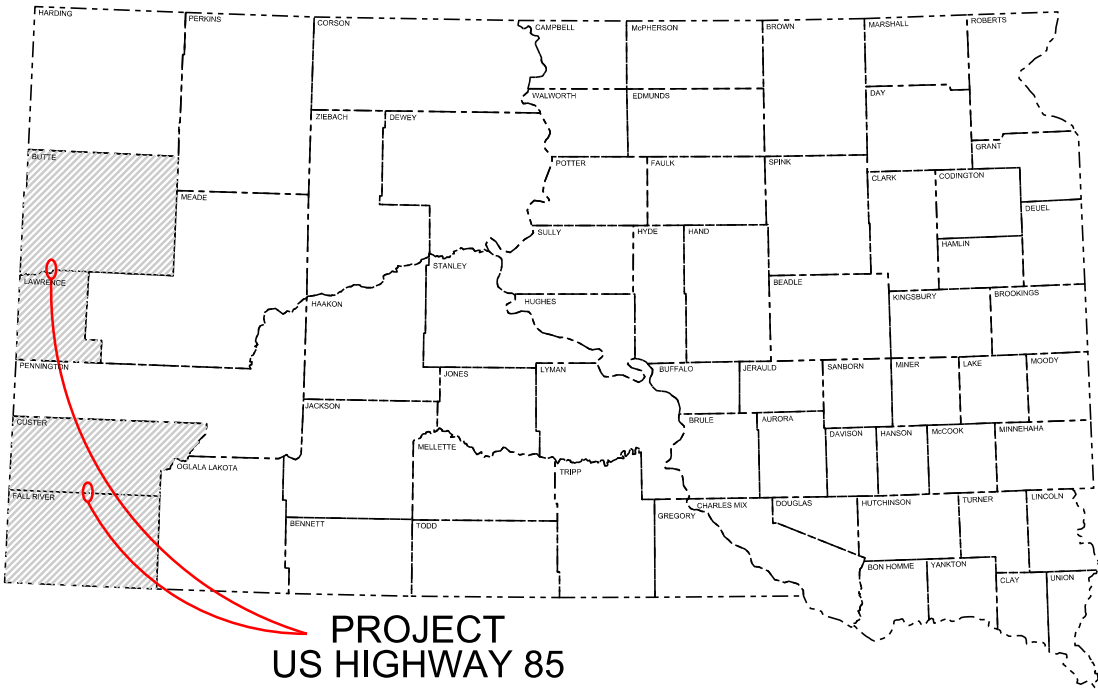


Plot Scale - 1:200

Plotted From - TRRC12608



STATE OF SOUTH DAKOTA
DEPARTMENT OF TRANSPORTATION
PLANS FOR PROPOSED
**PROJECT NH 0042(85)
US HIGHWAY 85 N & S,
US HIGHWAY 85, &
US HIGHWAY 385
BUTTE, LAWRENCE, CUSTER,
& FALL RIVER COUNTIES**
PAVEMENT RESTORATION, GRINDING, AC MEDIAN DITCH REPAIR,
& WEIGH-IN-MOTION UPGRADES
PCN 07KY

STATE OF SOUTH DAKOTA	PROJECT	SHEET	TOTAL SHEETS
	NH 0042(85)	1	77

Plotting Date: 03/30/2021 Revised 3/30/21 GDS

INDEX OF SECTIONS

- Section A: Estimate of Quantities and Environmental Commitments
Section C: Traffic Control Plans
Section F: Surfacing Plans

DESIGN DESIGNATION US 385

AADT (2019)	1892
AADT (2039)	2373
DHV	389
D	51%
DHV T%	3.7%
AADT T%	8.0%
V	65 mph

STORM WATER PERMIT
None Required

End
Project No. NH 0042(85)
US Highway 385
MRM 42.75

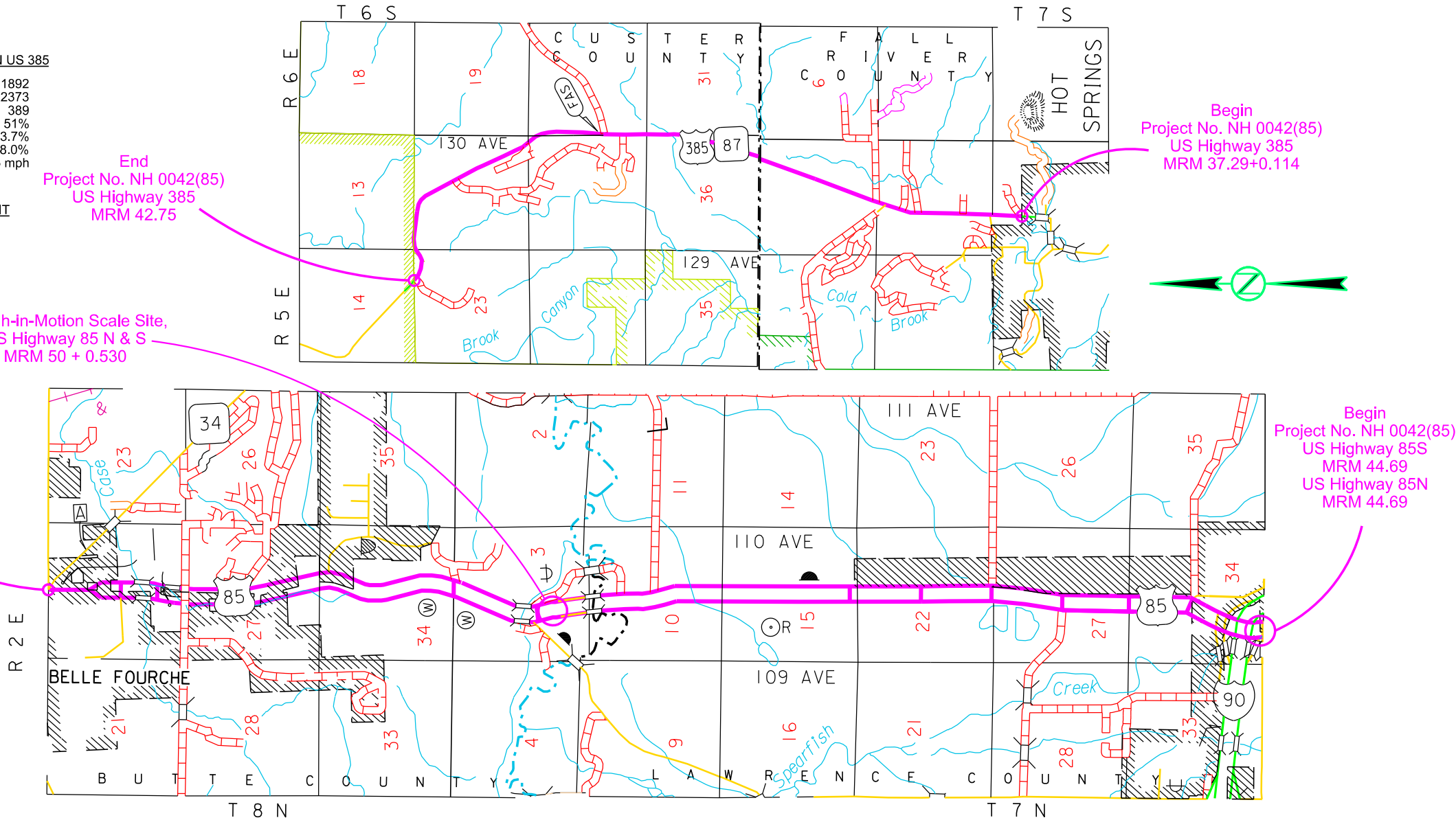
Weigh-in-Motion Scale Site,
US Highway 85 N & S
MRM 50 + 0.530

End
Project No. NH 0042(85)
US Highway 85
MRM 54.24

DESIGN DESIGNATION US 85

AADT (2019)	4115
AADT (2039)	5191
DHV	683
D	50%
DHV T%	3.2%
AADT T%	6.9%
V	65 mph

STORM WATER PERMIT
None Required



ESTIMATE OF QUANTITIES AND ENVIRONMENTAL COMMITMENTS

STATE OF SOUTH DAKOTA	PROJECT	SHEET	TOTAL SHEETS
	NH 0042(85)	A1	A3

Revised 4/6/21 GDS

Section C - Traffic Control

BID ITEM NUMBER	ITEM	QUANTITY	UNIT
634E0010	Flagging	800.0	Hour
634E0020	Pilot Car	400.0	Hour
634E0110	Traffic Control Signs	911.0	SqFt
634E0120	Traffic Control, Miscellaneous	Lump Sum	LS
634E0275	Type 3 Barricade	4	Each
634E0420	Type C Advance Warning Arrow Board	2	Each
634E0630	Temporary Pavement Marking	33.4	Mile

Section F – Surfacing

BID ITEM NUMBER	ITEM	QUANTITY	UNIT
009E0010	Mobilization	Lump Sum	LS
110E0300	Remove Concrete Curb and/or Gutter	118	Ft
110E1010	Remove Asphalt Concrete Pavement	19,548.9	SqYd
110E1100	Remove Concrete Pavement	1,827.7	SqYd
110E1120	Remove Concrete Median Pavement	41.4	SqYd
110E1700	Remove Silt Fence	300	Ft
110E7150	Remove Sign for Reset	19	Each
110E7152	Remove Delineator for Reset	45	Each
110E7510	Remove Pipe End Section for Reset	2	Each
120E0010	Unclassified Excavation	6,819	CuYd
120E6200	Water for Granular Material	32.9	MGal
250E0010	Incidental Work	Lump Sum	LS
260E1010	Base Course	6,212.2	Ton
260E2010	Gravel Cushion	111.9	Ton
260E5000	Shot Rock	4,333.3	Ton
320E1200	Asphalt Concrete Composite	4,740.1	Ton
332E0010	Cold Milling Asphalt Concrete	2,455	SqYd
350E0010	Asphalt Concrete Crack Sealing	71,662	Lb
380E0060	8.5" Nonreinforced PCC Pavement	1,839.6	SqYd
380E2554	4" Barrier Type Median PCC Pavement	41.4	SqYd
380E3520	6" PCC Approach Pavement	10.0	SqYd
380E5030	Nonreinforced PCC Pavement Repair	205.8	SqYd
380E6000	Dowel Bar	526	Each
380E6110	Insert Steel Bar in PCC Pavement	1,042	Each
380E6302	Reseal PCC Pavement Joint - Hot Pour	205,790	Ft
380E6310	Seal Random Cracks in PCC Pavement	3,419	Ft
380E6505	NGCS Grinding PCC Pavement	235,206.4	SqYd
380E6510	Grinding PCC Pavement	39,201.0	SqYd
390E0200	Repair Type A Spall	133.7	SqFt
450E9001	Reset Pipe End Section	2	Each
451E0516	6" PVC Pipe	45	Ft
632E2100	Reset Delineator	45	Each
632E3500	Reset Sign	19	Each
633E0010	Cold Applied Plastic Pavement Marking, 4"	28,027	Ft
633E1200	High Build Waterborne Pavement Marking Paint, White	503	Gal
633E1205	High Build Waterborne Pavement Marking Paint, Yellow	253	Gal
633E5000	Grooving for Cold Applied Plastic Pavement Marking, 4"	28,027	Ft
633E5100	Grooving for Durable Pavement Marking, 4"	177,396	Ft
650E1085	Type F68.5 Concrete Curb and Gutter	115	Ft
650E4090	Type C9 Concrete Gutter	27	Ft

INDEX OF SHEETS

A1 Estimate of Quantities for Sections C and F
A2 to A3 Environmental Commitments

Section F - Surfacing

BID ITEM NUMBER	ITEM	QUANTITY	UNIT
650E4685	Type P8.5 Concrete Gutter	12	Ft
734E0602	Low Flow Silt Fence	300	Ft
734E0610	Mucking Silt Fence	5	CuYd
734E0620	Repair Silt Fence	45	Ft
831E0300	Reinforcement Fabric (MSE)	14,087	SqYd

SPECIFICATIONS

Standard Specifications for Roads and Bridges, 2015 Edition and Required Provisions, Supplemental Specifications, and Special Provisions as included in the Proposal.

ENVIRONMENTAL COMMITMENTS

The SDDOT is committed to protecting the environment and uses Environmental Commitments as a communication tool for the Engineer and Contractor to ensure that attention is given to avoid, minimize, and/or mitigate an environmental impact. Environmental commitments to various agencies and the public have been made to secure approval of this project. An agency with permitting authority can delay a project if identified environmental impacts have not been adequately addressed. Unless otherwise designated, the Contractor’s primary contact regarding matters associated with these commitments will be the Project Engineer. During construction, the Project Engineer will verify that the Contractor has met Environmental Commitment requirements. These environmental commitments are not subject to change without prior written approval from the SDDOT Environmental Office.

Additional guidance on SDDOT’s Environmental Commitments can be accessed through the Environmental Procedures Manual found at: <<https://dot.sd.gov/media/documents/EnvironmentalProceduresManual.pdf> >

For questions regarding change orders in the field that may have an effect on an Environmental Commitment, the Project Engineer will contact the Environmental Engineer at 605-773-3180 or 605-773-4336 to determine whether an environmental analysis and/or resource agency coordination is necessary.

Once construction is complete, the Project Engineer will review all environmental commitments for the project and document their completion.

COMMITMENT B: FEDERALLY THREATENED, ENDANGERED, AND PROTECTED SPECIES

COMMITMENT B2: WHOOPING CRANE

The Whooping Crane is a spring and fall migratory bird in South Dakota that is about 5 feet tall and typically stops on wetlands, rivers, and agricultural lands along their migration route. An adult Whooping Crane is white with a red crown and a long, dark, pointed bill. Immature Whooping Cranes are cinnamon brown. While in flight, their long necks are kept straight and their long dark legs trail behind. Adult Whooping Cranes' black wing tips are visible during flight.

Action Taken/Required:

Harassment or other measures to cause the Whooping Crane to leave the site is a violation of the Endangered Species Act. If a Whooping Crane is sighted roosting in the vicinity of the project, borrow pits, or staging areas associated with the project, cease construction activities in the affected area until the Whooping Crane departs and immediately contact the Project Engineer. The Project Engineer will contact the Environmental Office so that the sighting can be reported to USFWS.

COMMITMENT B4: BALD EAGLE

Bald eagles are known to occur in this area.

Action Taken/Required:

If a nest is observed within one mile of the project site, notify the Project Engineer immediately so that he/she can consult with the Environmental Office for an appropriate course of action.

COMMITMENT C: WATER SOURCE

The Contractor will not withdraw water with equipment previously used outside the State of South Dakota or previously used in aquatic invasive species waters within South Dakota without prior approval from the SDDOT Environmental Office. Thoroughly wash all construction equipment to prevent and control the introduction and spread of invasive species into the project vicinity.

Action Taken/Required:

The Contractor will obtain the necessary permits from the regulatory agencies such as the South Dakota Department of Environment and Natural Resources (DENR) and the United States Army Corps of Engineers (USACE) prior to water extraction activities.

Additional information and mapping of Aquatic Invasive Species in South Dakota can be accessed at: <http://sdleastwanted.com/maps/default.aspx>.

COMMITMENT E: STORM WATER

Construction activities constitute less than 1 acre of disturbance.

Action Taken/Required:

At a minimum and regardless of project size, appropriate erosion and sediment control measures must be installed to control the discharge of pollutants from the construction site.

COMMITMENT H: WASTE DISPOSAL SITE

The Contractor will furnish a site(s) for the disposal of construction and/or demolition debris generated by this project.

Action Taken/Required:

Construction and/or demolition debris may not be disposed of within the Public ROW.

The waste disposal site(s) will be managed and reclaimed in accordance with the following from the General Permit for Construction/Demolition Debris Disposal Under the South Dakota Waste Management Program issued by the Department of Environment and Natural Resources.

The waste disposal site(s) will not be located in a wetland, within 200 feet of surface water, or in an area that adversely affects wildlife, recreation, aesthetic value of an area, or any threatened or endangered species, as approved by the Environmental Office and the Project Engineer.

If the waste disposal site(s) is located such that it is within view of any ROW, the following additional requirements will apply:

1. Construction and/or demolition debris consisting of concrete, asphalt concrete, or other similar materials will be buried in a trench completely separate from wood debris. The final cover over the construction and/or demolition debris will consist of a minimum of 1 foot of soil capable of supporting vegetation. Waste disposal sites provided outside of the Public ROW will be seeded in accordance with Natural Resources Conservation Service recommendations. The seeding recommendations may be obtained through the appropriate County NRCS Office. The Contractor will control the access to waste disposal sites not within the Public ROW with fences, gates, and placement of a sign or signs at the entrance to the site stating “No Dumping Allowed”.

2. Concrete and asphalt concrete debris may be stockpiled within view of the ROW for a period of time not to exceed the duration of the project. Prior to project completion, the waste will be removed from view of the ROW or buried and the waste disposal site reclaimed as noted above.

The above requirements will not apply to waste disposal sites that are covered by an individual solid waste permit as specified in SDCL 34A-6-58, SDCL 34A-6-1.13, and ARSD 74:27:10:06.

Failure to comply with the requirements stated above may result in civil penalties in accordance with South Dakota Solid Waste Law, SDCL 34A-6-1.31.

All costs associated with furnishing waste disposal site(s), disposing of waste, maintaining control of access (fence, gates, and signs), and reclamation of the waste disposal site(s) will be incidental to the various contract items.

STATE OF SOUTH DAKOTA	PROJECT	SHEET	TOTAL SHEETS
	NH 0042(85)	A3	A3

COMMITMENT I: HISTORICAL PRESERVATION OFFICE CLEARANCES

The SDDOT has obtained concurrence with the State Historical Preservation Office (SHPO or THPO) for all work included within the project limits and all department designated sources and designated option material sources, stockpile sites, storage areas, and waste sites provided within the plans.

Action Taken/Required:

All earth disturbing activities not designated within the plans require a cultural resource review prior to scheduling the pre-construction meeting. This work includes, but is not limited to: Contractor furnished material sources, material processing sites, stockpile sites, storage areas, plant sites, and waste areas.

The Contractor will arrange and pay for a record search and when necessary, a cultural resource survey. The Contractor has the option to contact the state Archaeological Research Center (ARC) at 605-394-1936 or another qualified archaeologist, to obtain either a records search or a cultural resources survey. A record search might be sufficient for review if the site was previously surveyed; however, a cultural resources survey may need to be conducted by a qualified archaeologist.

The Contractor will provide ARC with the following: a topographical map or aerial view of which the site is clearly outlined, site dimensions, project number, and PCN. If applicable, provide evidence that the site has been previously disturbed by farming, mining, or construction activities with a landowner statement that artifacts have not been found on the site.

The Contractor will submit the cultural resources survey report to SDDOT Environmental Office, 700 East Broadway Avenue, Pierre, SD 57501-2586. SDDOT will submit the information to the appropriate SHPO/THPO. Allow **30 Days** from the date this information is submitted to the Environmental Engineer for SHPO/THPO review.

In the event of an inadvertent discovery of human remains, funerary objects, or if evidence of cultural resources is identified during project construction activities, then such activities will immediately cease and the Project Engineer will be immediately notified. The Project Engineer will contact the SDDOT Environmental Office to determine an appropriate course of action.

SHPO/THPO review does not relieve the Contractor of the responsibility for obtaining any additional permits and clearances for Contractor furnished material sources, material processing sites, stockpile sites, storage areas, plant sites, and waste areas that affect wetlands, threatened and endangered species, or waterways. The Contractor will not utilize a site known or suspected of having contaminated soil or water. The Contractor will provide the required permits and clearances to the Project Engineer at the preconstruction meeting.

COMMITMENT S: FIRE PREVENTION IN THE BLACK HILLS AREA

This project is located within the Black Hills Forest Fire Protection Boundary.

Action Taken/Required:

The Contractor will adhere to the “Special Provision for Fire Plan”.