

STATE OF SOUTH DAKOTA  
DEPARTMENT OF TRANSPORTATION  
PLANS FOR PROPOSED

PROJECT NH 0018(231)339  
US HIGHWAY 18  
CHARLES MIX COUNTY

INSLOPE FLATTENING, SHARED USE PATH  
& PEDESTRIAN BRIDGE

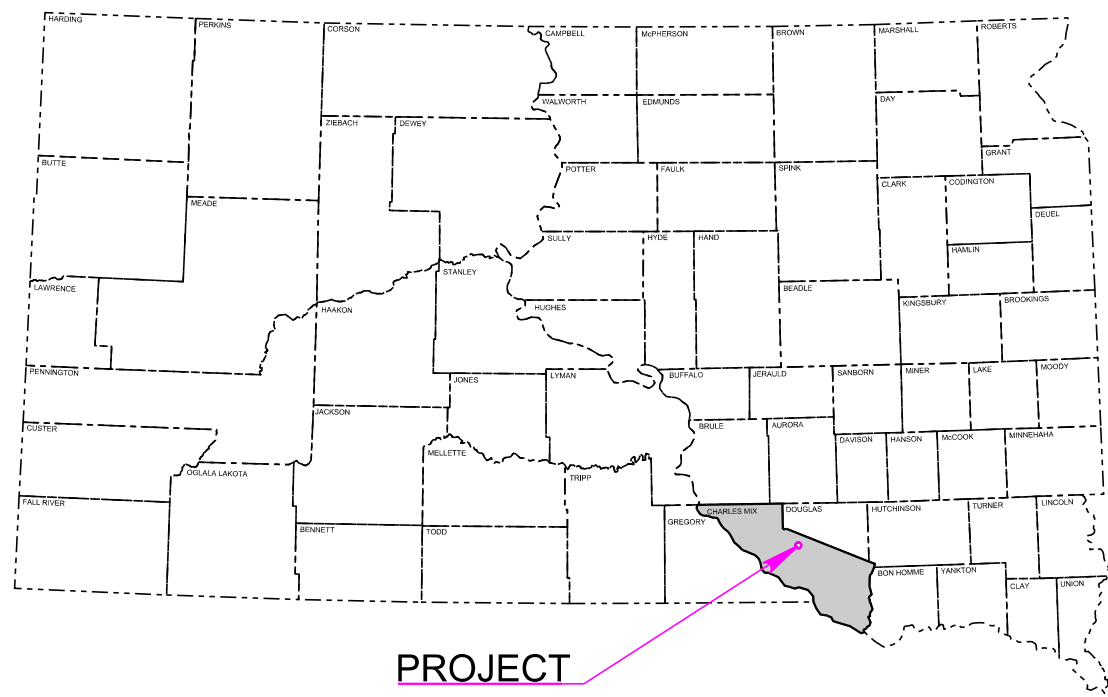
PCN 07M9

STATE OF SOUTH DAKOTA	PROJECT	SHEET	TOTAL SHEETS
	NH 0018(231)339	1	73

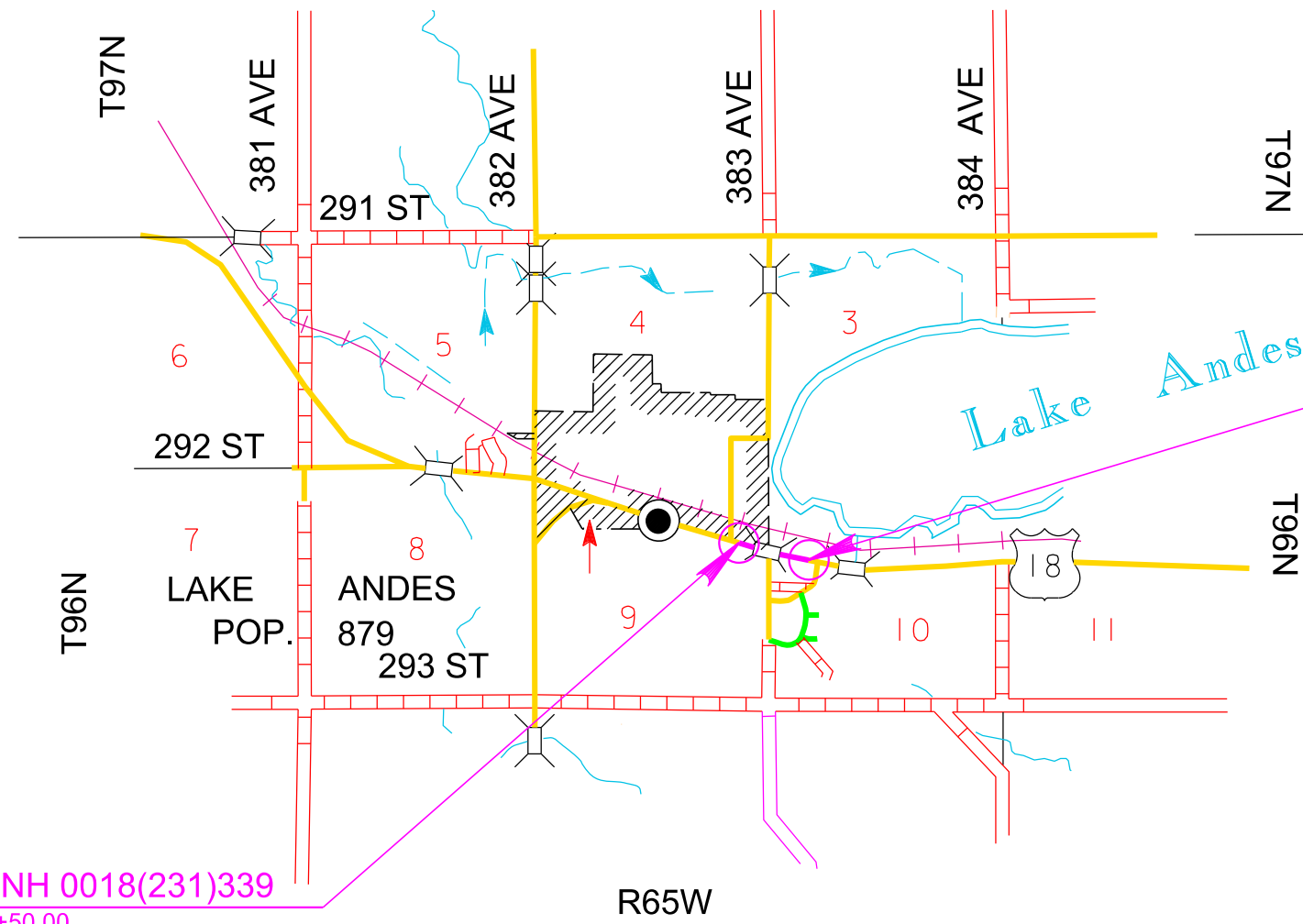
Plotting Date: 11/15/2024

INDEX OF SECTIONS

- Section A: Estimate of Quantities and Environmental Commitments
- Section B: Grading Plans
- Section C: Traffic Control Plans
- Section D: Erosion and Sediment Control Plans
- Section E: Structure Plans
- Section L: Lighting Plans
- Section X: Cross Sections
- Section Z: Pipe Sections



R65W



**END NH 018(231)339**  
Station 51+50.00  
Located 758.72 feet north and 1000.25 feet east of the west 1/4 corner of Section 10 - Township 96 North - Range 65 West of the 5th P.M.  
MRM 339.68+0.196

**BEGIN NH 0018(231)339**  
Station 33+50.00  
Located 1431.18 feet south and 684.22 feet west of the northeast corner of Section 9 - Township 96 North - Range 65 West of the 5th P.M.  
MRM 339.63+0.014

Gross Length	1800.00 Feet	0.341 Miles
Length of Exceptions	0.00 Feet	0.000 Miles
Net Length	1800.00 Feet	0.341 Miles

**DESIGN DESIGNATION**

AAADT (2020)	1455
AAADT (2045)	2255
DHV	260
D	51%
DHV T%	6.2%
AAADT T%	13.7%
V	65 mph

**STORM WATER PERMIT**  
Major Receiving  
Body of Water: Lake Andes  
Area Disturbed: 6.42 Acres  
Total Project Area: 7.46 Acres  
Approx. Begin Lat, Long: 43.1511, -98.5288

**3**

March 19, 2025

Plot Scale - 1:200

Plotted From - TRPR13418

File - U:\trproj\cmix07M9\titleA.dgn

# ESTIMATE OF QUANTITIES AND ENVIRONMENTAL COMMITMENTS

STATE OF SOUTH DAKOTA	PROJECT	SHEET	TOTAL SHEETS
	NH 0018(231)339	A1	A4

Plotting Date: 01/15/2025 Rev. 1-15-2025 RG

## Section B - Grading

BID ITEM NUMBER	ITEM	QUANTITY	UNIT
009E0010	Mobilization	Lump Sum	LS
009E3230	Grade Staking	0.592	Mile
009E3250	Miscellaneous Staking	0.592	Mile
009E3280	Slope Staking	0.592	Mile
009E3290	Structure Staking	1	Each
009E3301	Engineer Directed Surveying/Staking	40.0	Hour
100E0100	Clearing	Lump Sum	LS
110E0707	Remove High Tension 4 Cable Guardrail	3,787	Ft
110E1010	Remove Asphalt Concrete Pavement	868.0	SqYd
110E1140	Remove Concrete Sidewalk	266.7	SqYd
120E0010	Unclassified Excavation	1,392	CuYd
120E0600	Contractor Furnished Borrow Excavation	9,256	CuYd
120E6200	Water for Granular Material	5.1	MGal
250E0020	Incidental Work, Grading	Lump Sum	LS
260E1010	Base Course	424.0	Ton
260E2010	Gravel Cushion	194.0	Ton
260E6010	Granular Material	158.0	Ton
320E1200	Asphalt Concrete Composite	428.0	Ton
421E0100	Pipe Culvert Undercut	83	CuYd
450E0122	18" RCP Class 2, Furnish	162	Ft
450E0130	18" RCP, Install	162	Ft
450E0142	24" RCP Class 2, Furnish	158	Ft
450E0150	24" RCP, Install	158	Ft
450E2200	24" RCP Sloped End, Furnish	2	Each
450E2201	24" RCP Sloped End, Install	2	Each
450E2304	18" RCP Safety End, Furnish	4	Each
450E2307	18" RCP Safety End, Install	4	Each
600E0200	Type II Field Laboratory	1	Each
651E0060	6" Concrete Sidewalk	11,092	SqFt
651E7000	Type 1 Detectable Warnings	60	SqFt
671E7010	Adjust Manhole	2	Each
700E0210	Class B Riprap	934.4	Ton
831E0110	Type B Drainage Fabric	667	SqYd
900E1080	Orange Plastic Safety Fence	1,000	Ft

## Section C - Traffic Control

BID ITEM NUMBER	ITEM	QUANTITY	UNIT
634E0010	Flagging	150.0	Hour
634E0020	Pilot Car	50.0	Hour
634E0110	Traffic Control Signs	273.0	SqFt
634E0120	Traffic Control, Miscellaneous	Lump Sum	LS
634E0275	Type 3 Barricade	8	Each
634E2000	Longitudinal Pedestrian Barricade	20	Ft
634E2015	Temporary Pedestrian Access Route	Lump Sum	LS

## Section D - Erosion and Sediment Control

BID ITEM NUMBER	ITEM	QUANTITY	UNIT
110E1690	Remove Sediment	1.0	CuYd
110E1693	Remove Erosion Control Wattle	80	Ft
110E1700	Remove Silt Fence	570	Ft
230E0010	Placing Topsoil	2,592	CuYd
230E0020	Contractor Furnished Topsoil	1,595	CuYd
730E0100	Cover Crop Seeding	4.0	Bu
730E0212	Type G Permanent Seed Mixture	120	Lb
731E0200	Fertilizing	2.31	Ton
732E0100	Mulching	11.2	Ton
734E0103	Type 3 Erosion Control Blanket	285	SqYd
734E0154	12" Diameter Erosion Control Wattle	320	Ft
734E0165	Remove and Reset Erosion Control Wattle	80	Ft
734E0602	Low Flow Silt Fence	2,150	Ft
734E0604	High Flow Silt Fence	129	Ft
734E0610	Mucking Silt Fence	158	CuYd
734E0620	Repair Silt Fence	570	Ft
900E1320	Construction Entrance	1	Each

## INDEX OF SHEETS

A1 Estimate of Quantities for Sections B, C, D, E,  
and L  
A2 to A4 Environmental Commitments

## Section E - Structure

BID ITEM NUMBER	ITEM	QUANTITY	UNIT
250E0030	Incidental Work, Structure	Lump Sum	LS
420E0100	Structure Excavation, Bridge	13	CuYd
430E0200	Bridge End Embankment	28	CuYd
430E0300	Granular Bridge End Backfill	2.7	CuYd
460E0050	Class A45 Concrete, Bridge	19.8	CuYd
480E0100	Reinforcing Steel	1,108	Lb
510E3851	16"x0.25" Steel Pipe Test Pile, Furnish and Drive	100	Ft
510E3855	16"x0.25" Steel Pipe Bearing Pile, Furnish and Drive	100	Ft
680E0040	4" Underdrain Pipe	80	Ft
680E2500	Porous Backfill	4.1	Ton
700E0110	Class A Riprap	2.5	Ton
831E0110	Type B Drainage Fabric	8	SqYd
900E7003	Pedestrian Bridge	1	Each

## Section L - Signal and Lighting

BID ITEM NUMBER	ITEM	QUANTITY	UNIT
635E0040	Breakaway Base Luminaire Pole with Arm, 40' Mounting Height	2	Each
635E3700	Roadway Luminaire, LED with Photoelectric Cell	2	Each
635E5020	2' Diameter Footing	16.0	Ft
635E5301	Type 1 Electrical Junction Box	1	Each
635E5400	Electrical Service Cabinet	1	Each
635E8120	2" Rigid Conduit, Schedule 40	180	Ft
635E8220	2" Rigid Conduit, Schedule 80	75	Ft
635E9018	1/C #8 AWG Copper Wire	855	Ft
635E9710	2/C #10 AWG Copper Pole and Bracket Cable	120	Ft

## SPECIFICATIONS

Standard Specifications for Roads and Bridges, 2015 Edition and Required Provisions, Supplemental Specifications, and Special Provisions as included in the Proposal.

# ESTIMATE OF QUANTITIES AND ENVIRONMENTAL COMMITMENTS

STATE OF SOUTH DAKOTA	PROJECT NH 0018(231)339	SHEET A2	TOTAL SHEETS A4
-----------------------	----------------------------	-------------	--------------------

Plotting Date: 12/18/2024

## ENVIRONMENTAL COMMITMENTS

The SDDOT is committed to protecting the environment and uses Environmental Commitments as a communication tool for the Engineer and Contractor to ensure that attention is given to avoid, minimize, and/or mitigate an environmental impact. Environmental commitments to various agencies and the public have been made to secure approval of this project. An agency with permitting authority can delay a project if identified environmental impacts have not been adequately addressed. Unless otherwise designated, the Contractor's primary contact regarding matters associated with these commitments will be the Project Engineer. During construction, the Project Engineer will verify that the Contractor has met Environmental Commitment requirements. These environmental commitments are not subject to change without prior written approval from the SDDOT Environmental Office.

Additional guidance on SDDOT's Environmental Commitments can be accessed through the Environmental Procedures Manual found at: <https://dot.sd.gov/media/documents/EnvironmentalProceduresManual.pdf>

For questions regarding change orders in the field that may have an effect on an Environmental Commitment, the Project Engineer will contact the Environmental Engineer at 605-773-3180 or 605-773-4336 to determine whether an environmental analysis and/or resource agency coordination is necessary.

Once construction is complete, the Project Engineer will review all environmental commitments for the project and document their completion.

## COMMITMENT A: AQUATIC RESOURCES

### COMMITMENT A1: WETLANDS

All efforts to avoid and minimize wetland impacts from the project have resulted in approximately 0.64 acres of wetlands (includes temporary and permanent) becoming impacted. Refer to Section B – Grading Plans/plans for location and boundaries of the impacted wetlands.

#### Table of Impacted Wetlands

Wetland No.	Station	Perm. Impact Left (Acres)	Perm. Impact Right (Acres)	Temp. Impact Left (Acres)	Temp. Impact Right (Acres)	Total Impact (Acres)
1	34+00 to 48+00	0.00	0.11	0.33	0.21	0.64

#### Action Taken/Required:

SDDOT will acquire 0.79 credits from the Duck's Unlimited In-Lieu Fee program in the Missouri River GSA to mitigate permanent impacts.

Temporary impacts identified in the Table of Impacted Wetlands will not be mitigated as original contours and elevations will be re-established as designated in Section B – Grading Plans. Prior to initiating temporary work in wetlands, the Contractor will submit a plan to the Project Engineer in accordance with Section 7.21 D of the Specifications.

The Contractor will notify the Project Engineer if additional easement is needed to complete work adjacent to any wetland. The Project Engineer will obtain an appropriate course of action from the Environmental Office before proceeding with construction activities that affect any wetlands beyond the work limits and easements shown in the plans.

## COMMITMENT B: FEDERALLY THREATENED, ENDANGERED, AND PROTECTED SPECIES

### COMMITMENT B2: WHOOPING CRANE

The Whooping Crane is a spring and fall migratory bird in South Dakota that is about 5 feet tall and typically stops on wetlands, rivers, and agricultural lands along their migration route. An adult Whooping Crane is white with a red crown and a long, dark, pointed bill. Immature Whooping Cranes are cinnamon brown. While in flight, their long necks are kept straight and their long dark legs trail behind. Adult Whooping Cranes' black wing tips are visible during flight.

#### Action Taken/Required:

Harassment or other measures to cause the Whooping Crane to leave the site is a violation of the Endangered Species Act. If a Whooping Crane is sighted roosting in the vicinity of the project, borrow pits, or staging areas associated with the project, cease construction activities in the affected area until the Whooping Crane departs and immediately contact the Project Engineer. The Project Engineer will contact the Environmental Office so that the sighting can be reported to USFWS.

## COMMITMENT C: WATER SOURCE

The Contractor will not withdraw water with equipment previously used outside the State of South Dakota or previously used in aquatic invasive species (AIS) positive waters within South Dakota without prior approval from the SDDOT Environmental Office. To prevent and control the introduction and spread of invasive species into the project vicinity, all equipment will be power washed with hot water (≥140 °F) and completely dried for a minimum of 7 days prior to subsequent use. South Dakota administrative rule 41:10:04:02 forbids the possession and transport of AIS; therefore, all attached dirt, mud, debris and vegetation must be removed and all compartments and tanks capable of holding standing water must be drained. This includes, but is not limited to, all equipment, pumps, lines, hoses and holding tanks.

#### Action Taken/Required:

The Contractor will obtain the necessary permits from the regulatory agencies such as the South Dakota Department of Agriculture and Natural Resources (DANR) and the United States Army Corps of Engineers (USACE) prior to water extraction activities.

Additional information and mapping of water sources impacted by Aquatic Invasive Species in South Dakota can be accessed at: <https://sdleaswanted.sd.gov/maps/default.aspx>

< [South Dakota Administrative Rule 41:10:04 Aquatic Invasive Species: https://sdlegislature.gov/rules/DisplayRule.aspx?Rule=41:10:04](https://sdlegislature.gov/rules/DisplayRule.aspx?Rule=41:10:04) >

## COMMITMENT D: WATER QUALITY STANDARDS

### COMMITMENT D1: SURFACE WATER QUALITY

Lake Andes is classified as warm water, marginal fishery with a total suspended solids standard of less than 150 mg/L 30-day average, less than 263 mg/L daily maximum.

This project may be in the vicinity of multiple streams and wetlands. These waters are considered waters of the state and are protected under Administrative Rules of South Dakota (ARSD) Chapter 74:51. Special construction measures may have to be taken to ensure that this water body is not impacted.

#### Action Taken/Required:

The Contractor is advised that the South Dakota Surface Water Quality Standards, administered by the South Dakota Department of Agriculture and Natural Resources (DANR), apply to this project. Special construction measures will be taken to ensure the above standard(s) of the surface waters are maintained and protected.

Plot Scale - 1:200

Plotted From - TRPR13478

File - ...:\proj\cmix\07\19\Notes\SectionA.dgn

# ESTIMATE OF QUANTITIES AND ENVIRONMENTAL COMMITMENTS

STATE OF SOUTH DAKOTA	PROJECT	SHEET	TOTAL SHEETS
	NH 0018(231)339	A3	A4

Plotting Date: 12/18/2024

## COMMITMENT D2: SURFACE WATER DISCHARGE

The DANR General Permit for Temporary Discharge is required for temporary dewatering and discharges to waters of the state. The effluent limit for total suspended solids will be 90 mg/L 30-day average. The effluent limit applies to discharges to all waters of the state except discharges to waters classified as cold water permanent fish life propagation waters according to the ARSD 74:51:01:45. For discharges to waters of the state classified as cold water permanent fish life propagation waters, the effluent limit for total suspended solids will be 53 mg/L daily maximum.

The permittee has the option of completing effluent testing or implementing a pollution prevention plan for compliance with this permit. If the permittee develops a pollution prevention plan instead of total suspended solids sampling, the plan must be developed and implemented prior to discontinuing total suspended solids sampling. Refer to Section 4.0 of the permit. If any pollutants are suspected of being discharged, a sample must be taken for those parameters listed in Section 3.4 of the permit.

Refer to Commitment D1: Surface Water Quality for stream classification.

### Action Taken/Required:

If construction dewatering is required and this project is currently covered under a General Permit for Stormwater Discharges Associated with Construction Activities, the contractor will need to submit the dewatering information to the SDDANR using the following form:

<[https://danr.sd.gov/OfficeOfWater/SurfaceWaterQuality/docs/DANR\\_AddTempInfoFillable.pdf](https://danr.sd.gov/OfficeOfWater/SurfaceWaterQuality/docs/DANR_AddTempInfoFillable.pdf)>

The Contractor will provide a copy of the approved permit or the submitted dewatering information to the Project Engineer prior to proceeding with any dewatering activities. The approved permit or submitted dewatering information must be kept on-site and as part of the project records.

Effluent monitoring, as a result of dewatering activities, will be summarized for each month and recorded on a separate Discharge Monitoring Report (DMR) and submitted to DANR monthly. Additional information can be found at: <<https://danr.sd.gov/OfficeOfWater/SurfaceWaterQuality/swdpermitting/Ereporing.aspx>>

## COMMITMENT E: STORM WATER

Construction activities constitute 1 acre or more of earth disturbance and/or work in a waterway.

### Action Taken/Required:

The DANR General Permit for Stormwater Discharges Associated with Construction Activities is required for construction activity disturbing one or more acres of earth and work in a waterway. The SDDOT is the owner of this permit and will submit the NOI to DANR 15 days prior to project start in order to obtain coverage under the General Permit. Work can begin once the DANR letter of approval is received.

The Contractor must adhere to the "Special Provision Regarding Storm Water Discharges to Waters of the State."

The Contractor will complete the DANR Contractor Certification Form prior to the pre-construction meeting. The form certifies under penalty of law that the Contractor understands and will comply with the terms and conditions of the permit for this project. Work may not begin on this project until this form is signed and submitted to DANR.

The form can be found at:

<[https://danr.sd.gov/OfficeOfWater/SurfaceWaterQuality/docs/DANR\\_CGPAappendixCCA2018Fillable.pdf](https://danr.sd.gov/OfficeOfWater/SurfaceWaterQuality/docs/DANR_CGPAappendixCCA2018Fillable.pdf)>

The Contractor is advised that permit coverage may also be required for off-site activities, such as borrow and staging areas, which are the responsibility of the Contractor.

The EPA 2017 Construction General Permit is required for this project. The SDDOT is the owner of this permit and will submit the NOI to EPA 15 days prior to project start in order to obtain coverage. Work can begin after authorization is received from the EPA. This permit provides coverage for construction and dewatering activities for this project.

The Contractor must adhere to the "Special Provision Regarding Storm Water Discharge to Waters of the United States within Indian Reservations".

### Storm Water Pollution Prevention Plan

The Storm Water Pollution Prevention Plan (SWPPP) will be developed prior to the submittal of the NOI and will be implemented for all construction activities for compliance with the permit. The SWPPP must be kept on-site and updated as site conditions change. Erosion control measures and best management practices will be implemented in accordance with the SWPPP.

The DOT 298 Form will be used for site inspections and to document changes to the SWPPP. A copy of the completed inspection form will be filed with the SWPPP documents and retained for a minimum of three years.

The inspection will include disturbed areas of the construction site that have not been finally stabilized, areas used for storage materials, structural control measures, and locations where vehicles enter or exit the site. These areas will be inspected for evidence of, or the potential for, pollutants entering the drainage system. Erosion and sediment control measures identified in the SWPPP will be observed to ensure that they are operating correctly, and sediment is not tracked off the site.

Information on storm water permits and SWPPPs are available on the following websites:

SDDOT: < <https://dot.sd.gov/doing-business/environmental/stormwater> >

DANR: <<https://danr.sd.gov/OfficeOfWater/SurfaceWaterQuality/stormwater/default.aspx>>

EPA: < <https://www.epa.gov/npdes> >

## COMMITMENT H: WASTE DISPOSAL SITE

The Contractor will furnish a site(s) for the disposal of construction and/or demolition debris generated by this project.

### Action Taken/Required:

Construction and/or demolition debris may not be disposed of within the Public ROW.

The waste disposal site(s) will be managed and reclaimed in accordance with the following from the General Permit for Construction/Demolition Debris Disposal Under the South Dakota Waste Management Program issued by the Department of Agriculture and Natural Resources.

The waste disposal site(s) will not be located in a wetland, within 200 feet of surface water, or in an area that adversely affects wildlife, recreation, aesthetic value of an area, or any threatened or endangered species, as approved by the Environmental Office and the Project Engineer.

If the waste disposal site(s) is located such that it is within view of any ROW, the following additional requirements will apply:

1. Construction and/or demolition debris consisting of concrete, asphalt concrete, or other similar materials will be buried in a trench separate from wood debris. The final cover over the construction and/or demolition debris will consist of a minimum of 1 foot of soil capable of supporting vegetation. Waste disposal sites provided outside of the Public ROW will be seeded in accordance with Natural Resources Conservation Service recommendations. The seeding recommendations may be obtained through the appropriate County NRCS Office. The Contractor will control the access to waste disposal sites not within the Public ROW with fences, gates, and placement of a sign or signs at the entrance to the site stating, "No Dumping Allowed".

2. Concrete and asphalt concrete debris may be stockpiled within view of the ROW for a period not to exceed the duration of the project. Prior to project completion, the waste will be removed from view of the ROW or buried, and the waste disposal site reclaimed as noted above.

The above requirements will not apply to waste disposal sites that are covered by an individual solid waste permit as specified in SDCL 34A-6-58, SDCL 34A-6-1.13, and ARSD 74:27:10:06.

Failure to comply with the requirements stated above may result in civil penalties in accordance with South Dakota Solid Waste Law, SDCL 34A-6-1.31.

All costs associated with furnishing waste disposal site(s), disposing of waste, maintaining control of access (fence, gates, and signs), and reclamation of the waste disposal site(s) will be incidental to the various contract items.

# ESTIMATE OF QUANTITIES AND ENVIRONMENTAL COMMITMENTS

STATE OF SOUTH DAKOTA	PROJECT	SHEET	TOTAL SHEETS
	NH 0018(231)339	A4	A4

Plotting Date: 01/08/2025

## COMMITMENT I: HISTORIC PRESERVATION OFFICE CLEARANCES

The SDDOT has obtained concurrence with the State Historic Preservation Office (SHPO or THPO) for all work included within the project limits and all department designated sources and designated option material sources, stockpile sites, storage areas, and waste sites provided within the plans.

### Action Taken/Required:

All earth disturbing activities not designated within the plans require a cultural resource review prior to scheduling the pre-construction meeting. This work includes but is not limited to: Contractor furnished material sources, material processing sites, stockpile sites, storage areas, plant sites, and waste areas.

The Contractor will arrange and pay for a record search and when necessary, a cultural resource survey. The Contractor has the option to contact the state Archaeological Research Center (ARC) at 605-394-1936 or another qualified archaeologist, to obtain either a records search or a cultural resources survey. A record search might be sufficient for review if the site was previously surveyed; however, a cultural resources survey may need to be conducted by a qualified archaeologist.

The Contractor will provide ARC with the following: a topographical map or aerial view in which the site is clearly outlined, site dimensions, project number, and PCN. If applicable, provide evidence that the site has been previously disturbed by farming, mining, or construction activities with a landowner statement that artifacts have not been found on the site.

The Contractor will submit the cultural resources survey report to SDDOT Environmental Office, 700 East Broadway Avenue, Pierre, SD 57501-2586. SDDOT will submit the information to the appropriate SHPO/THPO. Allow **30 Days** from the date this information is submitted to the Environmental Engineer for SHPO/THPO review.

In the event of an inadvertent discovery of human remains, funerary objects, or if evidence of cultural resources is identified during project construction activities, then such activities within 150 feet of the inadvertent discovery will immediately cease and the Project Engineer will be immediately notified. The Project Engineer will contact the SDDOT Environmental Office, who will contact the appropriate SHPO/THPO within 48 hours of the discovery to determine an appropriate course of action.

SHPO/THPO review does not relieve the Contractor of the responsibility for obtaining any additional permits and clearances for Contractor furnished material sources, material processing sites, stockpile sites, storage areas, plant sites, and waste areas that affect wetlands, threatened and endangered species, or waterways. The Contractor will not utilize a site known or suspected of having contaminated soil or water. The Contractor will provide the required permits and clearances to the Project Engineer at the preconstruction meeting.

## COMMITMENT M: SECTION 4(f)/6(f) RESOURCES

### COMMITMENT M1: SECTION 4(f) PROPERTY

A Section 4(f) Evaluation concluded there are no feasible and prudent alternatives to avoiding Section 4(f) property located within the project.

Station	Section 4(f) Property
41+00L to 52+00L	Chicago, Milwaukee, St. Paul, & Pacific Railroad Grade
32+00 to 51+50L	Lake Andes National Waterfowl Refuge

### Action Taken/Required:

The following measures are required to minimize harm to the above Section 4(f) property:

A "Do Not Disturb note is included in the Section B Grading plans identifying Segments F2 and F3 of the railroad grade which must be avoided by construction activities.

The Contractor is required to notify the Archaeological Research Center prior to the pre-construction meeting and seven business days prior to construction near Segment F2 (about Station 41+00L) to install orange safety fencing around the site adjacent to construction activity.

The Contractor is not permitted to stage equipment or materials with the railroad grade from Station 41+00L to 52+00L. The Contractor will notify the Project Engineer if additional easement is needed to complete the work adjacent to any Section 4(f) property. The Project Engineer will obtain an appropriate course of action from the Environmental Office before proceeding with construction activities that affect any Section 4(f) property.

The Lake Andes National Wildlife Refuge is located adjacent to the project from Station 32+00L to 51+50L outside of the boundaries of the State of South Dakota, Division of Railroad, right-of-way. The contractor is notified that the Lake Andes National Wildlife Refuge is a Section 4(f) Property and temporary occupancy or permanent incorporation is not allowed unless there is no feasible and prudent avoidance alternative, as defined in 23 CFR 774.

## COMMITMENT N: SECTION 404 PERMIT

The SDDOT has obtained a Section 404 Permit from the USACE for the permanent actions associated with this project.

### Action Taken/Required:

The Contractor will comply with all requirements contained in the Section 404 Permit.

The Contractor will also be responsible for obtaining a Section 404 Permit for any dredge, excavation, or fill activities associated with material sources, storage areas, waste sites, and Contractor work sites outside the plan work limits that affect wetlands, floodplains, or waters of the United States.

## COMMITMENT Q: ARCHAEOLOGICAL COORDINATION

As a result of a Cultural Resources Survey, historic properties have been identified within and/or adjacent to the project rights-of-way.

The following historic properties have been identified that require avoidance of construction activities:

## Table of Historic Properties

Station	Offset (Ft.)	L/R	Environmental Sensitive Site	Action
41+00 to 52+00	varies	L	Railroad Grade Segments F2 & F3	Do Not Disturb/Site Fencing

The locations and boundaries of the site(s) for avoidance are shown in Section B - Grading Plans.

### Action Taken/Required:

If evidence for cultural resources is uncovered during project construction activities, then such activities within 150 feet of the inadvertent discovery will immediately cease and the Project Engineer will be immediately notified. The Project Engineer will contact the SDDOT Environmental Office, who will consult with the Archaeological Research Center (ARC), the Yankton Sioux Tribe THPO and/or SHPO if applicable, and FHWA, to determine the appropriate course of action.

All artifacts, features, or other items of interest uncovered by project construction activities will not be displaced unless the landowner and the SHPO consent to it.

Prior to the pre-construction meeting, the Contractor will contact the ARC (Phone: 605-394-1936) to coordinate the installation schedule of orange plastic safety fence around the perimeter of the sensitive site(s) listed in the Table of Historic Properties to ensure proper location, quality, and visibility of the orange safety fence. The exact location of the safety fence will be determined later in the field by the ARC representative.

The Contractor will give written notice to the Engineer seven (7) days prior to the commencement of earth disturbing activities near listed sites identified in the Table of Historic/Archaeological Site so the Engineer may notify ARC of the day work will start and schedule the installation of orange safety fence. ARC is to be present during earth disturbing activities to monitor the removal of topsoil, ensure avoidance of the fenced sites, and identify any culturally sensitive sites that may be uncovered.

Work within the vicinity of the site(s) will not begin until the safety fence is installed. All costs associated with furnishing and installing the orange safety fence will be incidental to the contract unit price per foot for "Orange Plastic Safety Fence". These identified sites cannot be used for material sources, storage areas, waste sites, and/or any other project related activities outside the plan work limits.

All costs associated with fencing will be submitted to the Project Engineer for reimbursement.

Before earth disturbing activities near listed sites occurs, there will be seven (7) days prior notification provided to ARC for scheduling the installation of orange safety fence at sites listed in the Table of Historic Sites.

These identified sites cannot be used for material sources, storage areas, waste sites, and/or any other project related activities outside the plan work limits.