

STATE OF SOUTH DAKOTA
DEPARTMENT OF TRANSPORTATION

PLANS FOR PROPOSED
PROJECT NH 0018(239)244 &
P 0049(10)42
US HIGHWAY 18 & SD HIGHWAY 49
TRIPP COUNTY

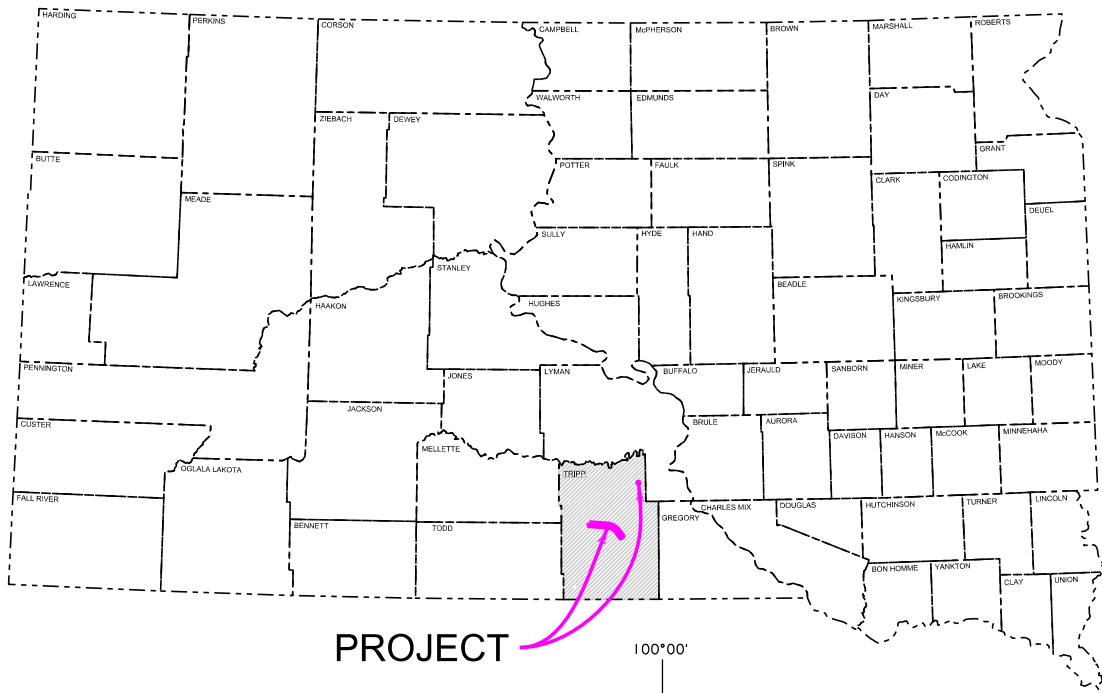
LOW SLUMP CONCRETE BRIDGE DECK OVERLAYS,
PCC PAVING, GUARDRAIL
PCN 08H9 & 08HC

| | | | |
|-----------------------|---------------------------------|-------|--------------|
| STATE OF SOUTH DAKOTA | PROJECT | SHEET | TOTAL SHEETS |
| | NH 0018(239)244 P 0049(10)42 | | |

Plotting Date: 02/07/2025

INDEX OF SECTIONS

- Section A - Estimate of Quantities and Environmental Commitments
- Section C - Traffic Control Plans
- Section D - Erosion Control Plans
- Section E - Structure Plans
- Section F - Surfacing Plans
- Section M - Pavement Marking Plans



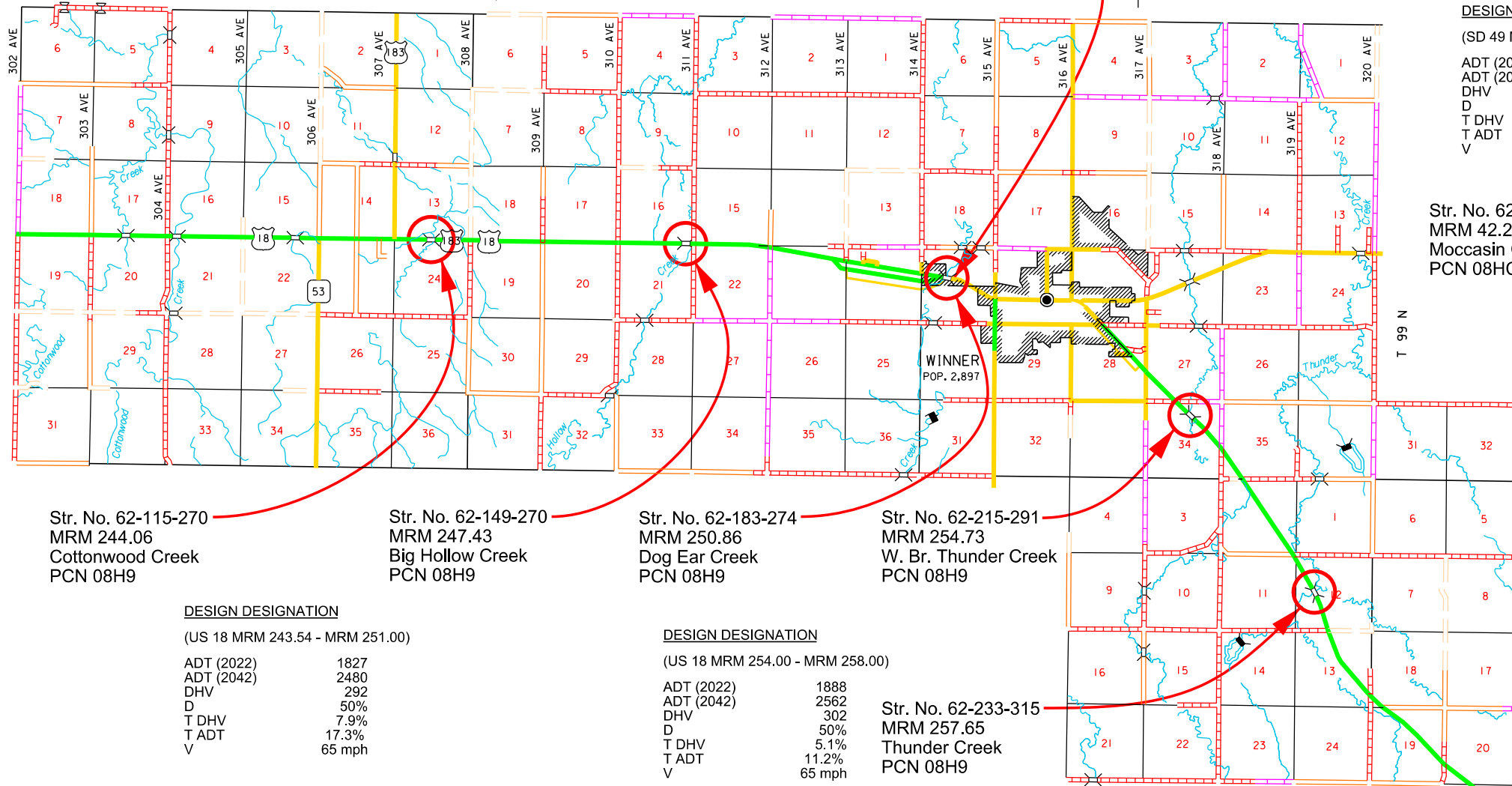
PROJECT

R 78 W

R 77 W

SURFACING SITE

R 76 W



DESIGN DESIGNATION

(SD 49 MRM 42.01 - MRM 43.00)

| | |
|------------|--------|
| ADT (2022) | 412 |
| ADT (2042) | 559 |
| DHV | 66 |
| D | 50% |
| T DHV | 16% |
| T ADT | 35.1% |
| V | 65 mph |

Str. No. 62-283-124
MRM 42.23
Moccasin Creek
PCN 08HC

Str. No. 62-115-270
MRM 244.06
Cottonwood Creek
PCN 08H9

Str. No. 62-149-270
MRM 247.43
Big Hollow Creek
PCN 08H9

Str. No. 62-183-274
MRM 250.86
Dog Ear Creek
PCN 08H9

Str. No. 62-215-291
MRM 254.73
W. Br. Thunder Creek
PCN 08H9

DESIGN DESIGNATION

(US 18 MRM 243.54 - MRM 251.00)

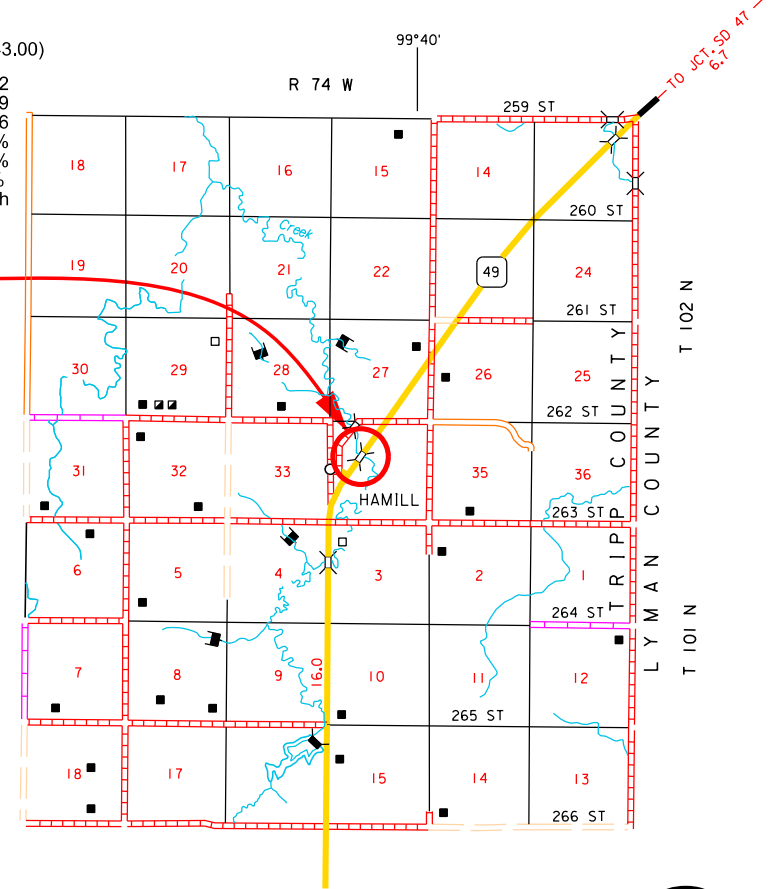
| | |
|------------|--------|
| ADT (2022) | 1827 |
| ADT (2042) | 2480 |
| DHV | 292 |
| D | 50% |
| T DHV | 7.9% |
| T ADT | 17.3% |
| V | 65 mph |

DESIGN DESIGNATION

(US 18 MRM 254.00 - MRM 258.00)

| | |
|------------|--------|
| ADT (2022) | 1888 |
| ADT (2042) | 2562 |
| DHV | 302 |
| D | 50% |
| T DHV | 5.1% |
| T ADT | 11.2% |
| V | 65 mph |

Str. No. 62-233-315
MRM 257.65
Thunder Creek
PCN 08H9



2

April 16, 2025

STORM WATER PERMIT
None required

Plot Scale - 1:200

Plotted From - TRIPR22410

Plot Name -

File - ...Tripp08H9\CAD\08H9_Surfmap.dgn

ESTIMATE OF QUANTITIES AND ENVIRONMENTAL COMMITMENTS

| | | | |
|-----------------------|---------------------------------|-------|--------------|
| STATE OF SOUTH DAKOTA | PROJECT | SHEET | TOTAL SHEETS |
| | NH 0018(239)244 P 0049(10)42 | A1 | A4 |

Revised 2/24/2025 JPJ

Section C - Traffic Control

PCN 08H9

| BID ITEM NUMBER | ITEM | QUANTITY | UNIT |
|-----------------|--|----------|------|
| 009E0010 | Mobilization | Lump Sum | LS |
| 009E4100 | Construction Schedule, Category I | Lump Sum | LS |
| 634E0010 | Flagging | 800.0 | Hour |
| 634E0110 | Traffic Control Signs | 877.0 | SqFt |
| 634E0120 | Traffic Control, Miscellaneous | Lump Sum | LS |
| 634E0135 | Traffic Control Supervisor | Lump Sum | LS |
| 634E0275 | Type 3 Barricade | 4 | Each |
| 634E0310 | Temporary Flexible Vertical Markers (Tabs) | 18,748 | Ft |
| 634E0400 | Type A Advance Warning Arrow Board | 2 | Each |
| 634E0525 | Linear Delineation System Panel, Barrier Mounted | 140 | Each |
| 634E0560 | Remove Pavement Marking, 4" or Equivalent | 100 | Ft |
| 634E0600 | 4" Temporary Pavement Marking Tape Type I | 864 | Ft |
| 634E0640 | Temporary Pavement Marking | 627 | Ft |
| 634E0700 | Traffic Control Movable Concrete Barrier | 140 | Each |
| 634E0705 | Remove and Reset Traffic Control Movable Concrete Barrier | 82 | Each |
| 634E0750 | Temporary Concrete Barrier End Protection | 6 | Each |
| 634E0755 | Remove and Reset Temporary Concrete Barrier End Protection | 14 | Each |
| 634E0760 | Temporary Concrete Barrier End Protection Module Set or Repair Kit | 1 | Each |
| 634E0900 | Portable Temporary Traffic Control Signal | 2 | Unit |
| 634E1002 | Detour and Restriction Signing | 500.0 | SqFt |

PCN 08HC

| BID ITEM NUMBER | ITEM | QUANTITY | UNIT |
|-----------------|--|----------|------|
| 009E0010 | Mobilization | Lump Sum | LS |
| 009E4100 | Construction Schedule, Category I | Lump Sum | LS |
| 634E0010 | Flagging | 100.0 | Hour |
| 634E0110 | Traffic Control Signs | 163.4 | SqFt |
| 634E0120 | Traffic Control, Miscellaneous | Lump Sum | LS |
| 634E0135 | Traffic Control Supervisor | Lump Sum | LS |
| 634E0310 | Temporary Flexible Vertical Markers (Tabs) | 3,350 | Ft |
| 634E0525 | Linear Delineation System Panel, Barrier Mounted | 46 | Each |
| 634E0560 | Remove Pavement Marking, 4" or Equivalent | 100 | Ft |
| 634E0600 | 4" Temporary Pavement Marking Tape Type I | 144 | Ft |
| 634E0640 | Temporary Pavement Marking | 168 | Ft |
| 634E0700 | Traffic Control Movable Concrete Barrier | 46 | Each |
| 634E0750 | Temporary Concrete Barrier End Protection | 2 | Each |
| 634E0755 | Remove and Reset Temporary Concrete Barrier End Protection | 2 | Each |
| 634E0760 | Temporary Concrete Barrier End Protection Module Set or Repair Kit | 1 | Each |
| 634E1002 | Detour and Restriction Signing | 701.0 | SqFt |

Section D - Erosion and Sediment Control

PCN 08H9

| BID ITEM NUMBER | ITEM | QUANTITY | UNIT |
|-----------------|----------------------------|----------|------|
| 230E0100 | Remove and Replace Topsoil | Lump Sum | LS |
| 734E0010 | Erosion Control | Lump Sum | LS |

PCN 08HC

| BID ITEM NUMBER | ITEM | QUANTITY | UNIT |
|-----------------|----------------------------|----------|------|
| 230E0100 | Remove and Replace Topsoil | Lump Sum | LS |
| 734E0010 | Erosion Control | Lump Sum | LS |

INDEX OF SHEETS

A1 to A3 Estimate of Quantities for Sections C, D, E, F and M
A4 Environmental Commitments

Section E – Structure

Structure No. 62-183-274 (PCN 08H9)

Structure No. 62-233-315 (PCN 08H9)

| BID ITEM NUMBER | ITEM | QUANTITY | UNIT |
|-----------------|--|----------|------|
| 009E3310 | Bridge Elevation Survey | Lump Sum | LS |
| 110E0020 | Remove Bridge Railing | 200 | Ft |
| 460E0010 | Class A45 Concrete, Bridge Barrier | 15.6 | CuYd |
| 460E0300 | Breakout Structural Concrete | 2.4 | CuYd |
| 460E0380 | Install Dowel in Concrete | 194 | Each |
| 480E0200 | Epoxy Coated Reinforcing Steel | 1,228 | Lb |
| 480E5000 | Galvanic Anode | 16 | Each |
| 550E0010 | Low Slump Dense Concrete Bridge Deck Overlay | 39 | CuYd |
| 550E0100 | Concrete Removal Type 1A | 513.4 | SqYd |
| 550E0105 | Concrete Removal Type 2A | 128.3 | SqYd |
| 550E0110 | Concrete Removal Type 1B | 51.3 | SqYd |
| 550E0120 | Concrete Removal Type 1C | 25.7 | SqYd |
| 550E0130 | Concrete Removal Type 1D | 25.7 | SqYd |
| 550E0140 | Concrete Removal Type B | 20.0 | Ft |
| 550E0200 | Class A45 Concrete Fill | 7.8 | CuYd |
| 550E0500 | Finishing and Curing | 513.4 | SqYd |

Structure No. 62-149-270 (PCN 08H9)

| BID ITEM NUMBER | ITEM | QUANTITY | UNIT |
|-----------------|--|----------|------|
| 009E3310 | Bridge Elevation Survey | Lump Sum | LS |
| 460E0010 | Class A45 Concrete, Bridge Barrier | 3.0 | CuYd |
| 460E0300 | Breakout Structural Concrete | 3.0 | CuYd |
| 460E0380 | Install Dowel in Concrete | 32 | Each |
| 480E0200 | Epoxy Coated Reinforcing Steel | 278 | Lb |
| 480E5000 | Galvanic Anode | 16 | Each |
| 550E0010 | Low Slump Dense Concrete Bridge Deck Overlay | 24 | CuYd |
| 550E0100 | Concrete Removal Type 1A | 354.4 | SqYd |
| 550E0105 | Concrete Removal Type 2A | 88.6 | SqYd |
| 550E0110 | Concrete Removal Type 1B | 95.0 | SqYd |
| 550E0120 | Concrete Removal Type 1C | 47.6 | SqYd |
| 550E0130 | Concrete Removal Type 1D | 47.6 | SqYd |
| 550E0140 | Concrete Removal Type B | 20.0 | Ft |
| 550E0200 | Class A45 Concrete Fill | 13.2 | CuYd |
| 550E0500 | Finishing and Curing | 354.4 | SqYd |

| BID ITEM NUMBER | ITEM | QUANTITY | UNIT |
|-----------------|--|----------|------|
| 009E3310 | Bridge Elevation Survey | Lump Sum | LS |
| 410E2600 | Membrane Sealant Expansion Joint | 111.2 | Ft |
| 460E0070 | Class A45 Concrete, Bridge Repair | 7.7 | CuYd |
| 460E0300 | Breakout Structural Concrete | 7.7 | CuYd |
| 460E0380 | Install Dowel in Concrete | 64 | Each |
| 480E0200 | Epoxy Coated Reinforcing Steel | 1,687 | Lb |
| 480E0504 | No. 4 Rebar Splice | 4 | Each |
| 480E0505 | No. 5 Rebar Splice | 4 | Each |
| 480E0506 | No. 6 Rebar Splice | 4 | Each |
| 480E5000 | Galvanic Anode | 12 | Each |
| 550E0010 | Low Slump Dense Concrete Bridge Deck Overlay | 61 | CuYd |
| 550E0100 | Concrete Removal Type 1A | 834.0 | SqYd |
| 550E0105 | Concrete Removal Type 2A | 208.5 | SqYd |
| 550E0110 | Concrete Removal Type 1B | 183.0 | SqYd |
| 550E0120 | Concrete Removal Type 1C | 91.6 | SqYd |
| 550E0130 | Concrete Removal Type 1D | 91.6 | SqYd |
| 550E0140 | Concrete Removal Type B | 20.0 | Ft |
| 550E0200 | Class A45 Concrete Fill | 22.2 | CuYd |
| 550E0500 | Finishing and Curing | 834.0 | SqYd |

Structure No. 62-215-291 (PCN 08H9)

| BID ITEM NUMBER | ITEM | QUANTITY | UNIT |
|-----------------|--|----------|------|
| 009E3310 | Bridge Elevation Survey | Lump Sum | LS |
| 110E0020 | Remove Bridge Railing | 212 | Ft |
| 460E0010 | Class A45 Concrete, Bridge Barrier | 16.4 | CuYd |
| 460E0300 | Breakout Structural Concrete | 2.4 | CuYd |
| 460E0380 | Install Dowel in Concrete | 206 | Each |
| 480E0200 | Epoxy Coated Reinforcing Steel | 1,286 | Lb |
| 480E5000 | Galvanic Anode | 16 | Each |
| 550E0010 | Low Slump Dense Concrete Bridge Deck Overlay | 43 | CuYd |
| 550E0100 | Concrete Removal Type 1A | 545.2 | SqYd |
| 550E0105 | Concrete Removal Type 2A | 136.2 | SqYd |
| 550E0110 | Concrete Removal Type 1B | 54.5 | SqYd |
| 550E0120 | Concrete Removal Type 1C | 27.2 | SqYd |
| 550E0130 | Concrete Removal Type 1D | 27.2 | SqYd |
| 550E0140 | Concrete Removal Type B | 20.0 | Ft |
| 550E0200 | Class A45 Concrete Fill | 8.8 | CuYd |
| 550E0500 | Finishing and Curing | 545.2 | SqYd |

Structure No. 62-115-270 (PCN 08H9)

| BID ITEM NUMBER | ITEM | QUANTITY | UNIT |
|-----------------|--|----------|------|
| 009E3310 | Bridge Elevation Survey | Lump Sum | LS |
| 550E0010 | Low Slump Dense Concrete Bridge Deck Overlay | 22 | CuYd |
| 550E0100 | Concrete Removal Type 1A | 322.6 | SqYd |
| 550E0105 | Concrete Removal Type 2A | 80.7 | SqYd |
| 550E0110 | Concrete Removal Type 1B | 132.6 | SqYd |
| 550E0120 | Concrete Removal Type 1C | 66.2 | SqYd |
| 550E0130 | Concrete Removal Type 1D | 66.2 | SqYd |
| 550E0140 | Concrete Removal Type B | 20.0 | Ft |
| 550E0200 | Class A45 Concrete Fill | 14.8 | CuYd |
| 550E0500 | Finishing and Curing | 322.6 | SqYd |

Structure No. 62-283-124 (PCN 08HC)

| BID ITEM NUMBER | ITEM | QUANTITY | UNIT |
|-----------------|--|----------|------|
| 009E3310 | Bridge Elevation Survey | Lump Sum | LS |
| 120E3120 | Bridge Berm Repair | 2 | Each |
| 464E0100 | Controlled Density Fill | 1.4 | CuYd |
| 550E0010 | Low Slump Dense Concrete Bridge Deck Overlay | 43 | CuYd |
| 550E0100 | Concrete Removal Type 1A | 553.4 | SqYd |
| 550E0105 | Concrete Removal Type 2A | 138.4 | SqYd |
| 550E0110 | Concrete Removal Type 1B | 83.0 | SqYd |
| 550E0120 | Concrete Removal Type 1C | 41.6 | SqYd |
| 550E0130 | Concrete Removal Type 1D | 41.6 | SqYd |
| 550E0140 | Concrete Removal Type B | 20.0 | Ft |
| 550E0200 | Class A45 Concrete Fill | 5.2 | CuYd |
| 550E0500 | Finishing and Curing | 553.4 | SqYd |

Section F - Surfacing

PCN 08H9

| BID ITEM NUMBER | ITEM | QUANTITY | UNIT |
|-----------------|--|----------|------|
| 110E0300 | Remove Concrete Curb and/or Gutter | 49 | Ft |
| 110E0730 | Remove Beam Guardrail | 1,068.8 | Ft |
| 110E0810 | Remove Rubrail | 96.0 | Ft |
| 110E1010 | Remove Asphalt Concrete Pavement | 2,164.0 | SqYd |
| 110E1140 | Remove Concrete Sidewalk | 26.1 | SqYd |
| 120E0010 | Unclassified Excavation | 409 | CuYd |
| 120E3000 | Placing Embankment | 10 | CuYd |
| 260E1010 | Base Course | 232.2 | Ton |
| 260E1030 | Base Course, Salvaged | 340.4 | Ton |
| 270E0022 | Salvage Asphalt Mix Material | 137.2 | Ton |
| 270E0110 | Salvage and Stockpile Granular Material | 340.4 | Ton |
| 270E0230 | Haul and Stockpile Asphalt Mix Material | 137.2 | Ton |
| 320E1200 | Asphalt Concrete Composite | 191.8 | Ton |
| 380E0060 | 8.5" Nonreinforced PCC Pavement | 486.2 | SqYd |
| 380E6000 | Dowel Bar | 231 | Each |
| 380E6110 | Insert Steel Bar in PCC Pavement | 56 | Each |
| 630E0110 | Straight Double Class A Thrie Beam Guardrail with Wood Posts | 12.5 | Ft |
| 630E0500 | Type 1 MGS | 612.5 | Ft |
| 630E1010 | Straight Class A W Beam Guardrail with Wood Posts | 75.0 | Ft |
| 630E1015 | Straight Class A W Beam Guardrail with CRT Posts | 12.5 | Ft |
| 630E1025 | Curved Class A W Beam Guardrail with CRT Posts | 50.0 | Ft |
| 630E1500 | Type 1 Guardrail Transition | 12 | Each |
| 630E2000 | W Beam to Thrie Beam Guardrail Transition | 1 | Each |
| 630E2017 | MGS MASH Flared End Terminal | 1 | Each |
| 630E2018 | MGS MASH Tangent End Terminal | 11 | Each |
| 630E2035 | W Beam Guardrail Special Anchor Assembly | 1 | Each |
| 630E2095 | Assembly for Missing Post in Transition Retrofit | 2 | Each |
| 632E2220 | Guardrail Delineator | 52 | Each |
| 650E0085 | Type B68.5 Concrete Curb and Gutter | 49 | Ft |
| 651E0040 | 4" Concrete Sidewalk | 235 | SqFt |
| 831E0300 | Reinforcement Fabric (MSE) | 706 | SqYd |

Section M – Pavement Marking

PCN 08H9

| BID ITEM NUMBER | ITEM | QUANTITY | UNIT |
|-----------------|---|----------|------|
| 633E0010 | Cold Applied Plastic Pavement Marking, 4" | 249 | Ft |
| 633E0019 | Cold Applied Plastic Pavement Marking, 4" with Contrast Border | 40 | Ft |
| 633E1220 | High Build Waterborne Pavement Marking Paint, 4" White | 1,176 | Ft |
| 633E1222 | High Build Waterborne Pavement Marking Paint, 4" Yellow | 468 | Ft |
| 633E5000 | Grooving for Cold Applied Plastic Pavement Marking, 4" | 249 | Ft |
| 633E5004 | Grooving for Cold Applied Plastic Pavement Marking, 4" with Contrast Border | 40 | Ft |

PCN 08HC

| BID ITEM NUMBER | ITEM | QUANTITY | UNIT |
|-----------------|---|----------|------|
| 633E1220 | High Build Waterborne Pavement Marking Paint, 4" White | 336 | Ft |
| 633E1222 | High Build Waterborne Pavement Marking Paint, 4" Yellow | 40 | Ft |

SPECIFICATIONS

Standard Specifications for Roads and Bridges, 2015 Edition and Required Provisions, Supplemental Specifications, and Special Provisions as included in the Proposal.

ENVIRONMENTAL COMMITMENTS

The SDDOT is committed to protecting the environment and uses Environmental Commitments as a communication tool for the Engineer and Contractor to ensure that attention is given to avoid, minimize, and/or mitigate an environmental impact. Environmental commitments to various agencies and the public have been made to secure approval of this project. An agency with permitting authority can delay a project if identified environmental impacts have not been adequately addressed. Unless otherwise designated, the Contractor's primary contact regarding matters associated with these commitments will be the Project Engineer. During construction, the Project Engineer will verify that the Contractor has met Environmental Commitment requirements. These environmental commitments are not subject to change without prior written approval from the SDDOT Environmental Office.

Additional guidance on SDDOT's Environmental Commitments can be accessed through the Environmental Procedures Manual found at: <https://dot.sd.gov/media/documents/EnvironmentalProceduresManual.pdf>

For questions regarding change orders in the field that may have an effect on an Environmental Commitment, the Project Engineer will contact the Environmental Engineer at 605-773-3180 or 605-773-4336 to determine whether an environmental analysis and/or resource agency coordination is necessary.

Once construction is complete, the Project Engineer will review all environmental commitments for the project and document their completion.

COMMITMENT B: FEDERALLY THREATENED, ENDANGERED, AND PROTECTED SPECIES

COMMITMENT B2: WHOOPING CRANE

The Whooping Crane is a spring and fall migratory bird in South Dakota that is about 5 feet tall and typically stops on wetlands, rivers, and agricultural lands along their migration route. An adult Whooping Crane is white with a red crown and a long, dark, pointed bill. Immature Whooping Cranes are cinnamon brown. While in flight, their long necks are kept straight and their long dark legs trail behind. Adult Whooping Cranes' black wing tips are visible during flight.

Action Taken/Required:

Harassment or other measures to cause the Whooping Crane to leave the site is a violation of the Endangered Species Act. If a Whooping Crane is sighted roosting in the vicinity of the project, borrow pits, or staging areas associated with the project, cease construction activities in the affected area until the Whooping Crane departs and immediately contact the Project Engineer. The Project Engineer will contact the Environmental Office so that the sighting can be reported to USFWS.

COMMITMENT B3: AMERICAN BURYING BEETLE

This project is in an area that contains habitat associated with the American Burying Beetle. All work included within the project limits, SDDOT designated sources and sites, and designated option sources and sites provided in the plans have been coordinated with the USFWS.

Action Taken/Required:

Earth disturbing activities will not occur outside the designated work limits shown in the plans unless specifically stated. The Contractor is responsible for obtaining USFWS review for any borrow sites, staging areas, waste sites, additional easements, and other ground disturbing activities outside the project work limits shown in the plans. At the pre-construction meeting the Contractor will provide the Project Engineer a copy of the USFWS review for any work outside the designated work limits shown in the plans to ensure all permit conditions and plans are clearly understood.

COMMITMENT C: WATER SOURCE

The Contractor will not withdraw water with equipment previously used outside the State of South Dakota or previously used in aquatic invasive species (AIS) positive waters within South Dakota without prior approval from the SDDOT Environmental Office. To prevent and control the introduction and spread of invasive species into the project vicinity, all equipment will be power washed with hot water (≥ 140 °F) and completely dried for a minimum of 7 days prior to subsequent use. South Dakota administrative rule 41:10:04:02 forbids the possession and transport of AIS; therefore, all attached dirt, mud, debris and vegetation must be removed and all compartments and tanks capable of holding standing water must be drained. This includes, but is not limited to, all equipment, pumps, lines, hoses and holding tanks.

Action Taken/Required:

The Contractor will obtain the necessary permits from the regulatory agencies such as the South Dakota Department of Agriculture and Natural Resources (DANR) and the United States Army Corps of Engineers (USACE) prior to water extraction activities.

Additional information and mapping of water sources impacted by Aquatic Invasive Species in South Dakota can be accessed at: <https://sdleastwanted.sd.gov/maps/default.aspx>

[South Dakota Administrative Rule 41:10:04 Aquatic Invasive Species: https://sdlegislature.gov/rules/DisplayRule.aspx?Rule=41:10:04](https://sdlegislature.gov/rules/DisplayRule.aspx?Rule=41:10:04)

COMMITMENT H: WASTE DISPOSAL SITE

The Contractor will furnish a site(s) for the disposal of construction and/or demolition debris generated by this project.

Action Taken/Required:

Construction and/or demolition debris may not be disposed of within the Public ROW.

The waste disposal site(s) will be managed and reclaimed in accordance with the following from the General Permit for Construction/Demolition Debris Disposal Under the South Dakota Waste Management Program issued by the Department of Agriculture and Natural Resources.

The waste disposal site(s) will not be located in a wetland, within 200 feet of surface water, or in an area that adversely affects wildlife, recreation, aesthetic value of an area, or any threatened or endangered species, as approved by the Environmental Office and the Project Engineer.

If the waste disposal site(s) is located such that it is within view of any ROW, the following additional requirements will apply:

- Construction and/or demolition debris consisting of concrete, asphalt concrete, or other similar materials will be buried in a trench separate from wood debris. The final cover over the construction and/or demolition debris will consist of a minimum of 1 foot of soil capable of supporting vegetation. Waste disposal sites provided outside of the Public ROW will be seeded in accordance with Natural Resources Conservation Service recommendations. The seeding recommendations may be obtained through the appropriate County NRCS Office. The Contractor will control the access to waste disposal sites not within the Public ROW with fences, gates, and placement of a sign or signs at the entrance to the site stating, "No Dumping Allowed".

- Concrete and asphalt concrete debris may be stockpiled within view of the ROW for a period not to exceed the duration of the project. Prior to project completion, the waste will be removed from view of the ROW or buried, and the waste disposal site reclaimed as noted above.

The above requirements will not apply to waste disposal sites that are covered by an individual solid waste permit as specified in SDCL 34A-6-58, SDCL 34A-6-1.13, and ARSD 74:27:10:06.

Failure to comply with the requirements stated above may result in civil penalties in accordance with South Dakota Solid Waste Law, SDCL 34A-6-1.31.

All costs associated with furnishing waste disposal site(s), disposing of waste, maintaining control of access (fence, gates, and signs), and reclamation of the waste disposal site(s) will be incidental to the various contract items.