

STATE OF SOUTH DAKOTA
DEPARTMENT OF TRANSPORTATION
PLANS FOR PROPOSED
**PROJECT NH 0016(103)67
& NH-P 0044(235)39**
**US HIGHWAY 16B WB/EB
& SD HIGHWAY 44**
PENNINGTON COUNTY
POLYMER CHIP SEAL
PCN 091A & 08JE



Plotting Date: 3/7/2025

PROJECT		SECTION	SHEET
NH 0016(103)67 & NH-P 0044(235)39		Title	1/30

INDEX OF SECTIONS

Section A:	Estimate of Quantities and Environmental Commitments
Section C:	Traffic Control Plans
Section E:	Structure Plans
Section M:	Pavement Marking Plans

DESIGN DESIGNATION US16B WB/EB

ADT (2023)	18432
ADT (2043)	25344
D	50%
T DHV	11.6%
T ADT	5.3%
V	60 MPH

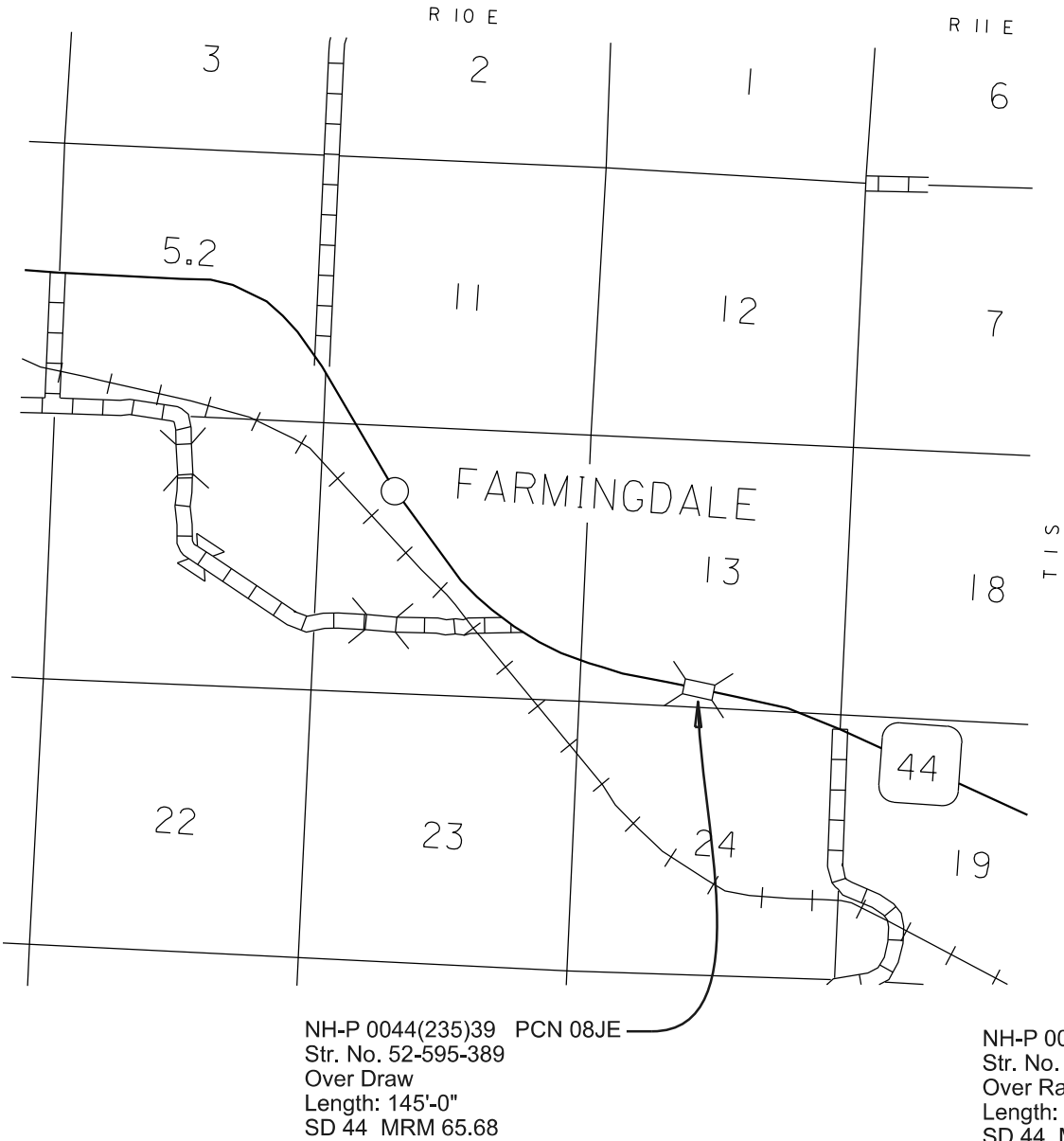
DESIGN DESIGNATION SD 44
MRM 42.15

ADT (2023)	12216
ADT (2043)	16797
D	50%
T DHV	0.9%
T ADT	2.0%
V	40 MPH

DESIGN DESIGNATION SD 44
MRM 65.68

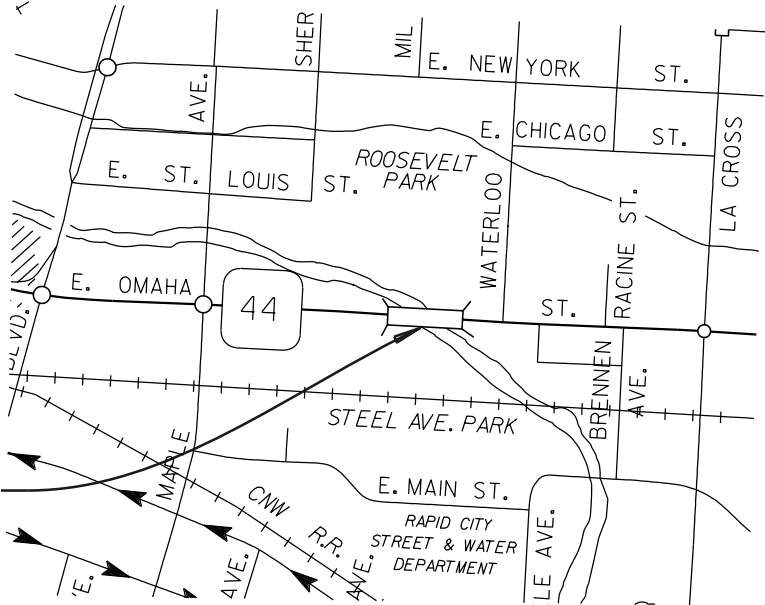
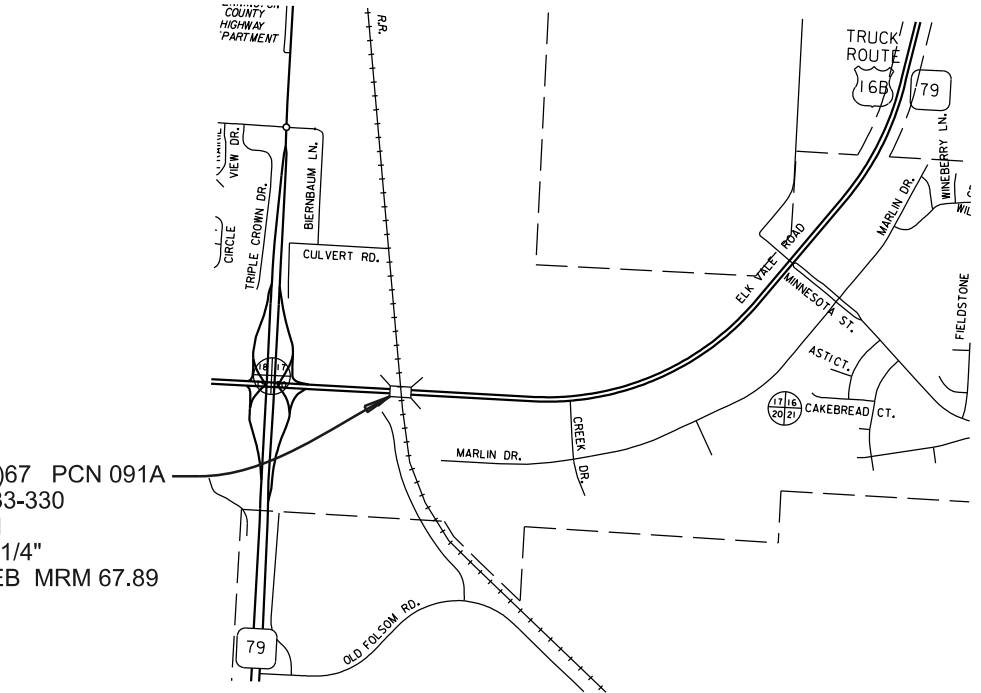
ADT (2023)	2234
ADT (2043)	3523
DHV	415
D	50%
T DHV	2.1%
T ADT	4.6%
V	65 MPH

STORM WATER PERMIT
None Required



NH-P 0044(235)39 PCN 08JE
Str. No. 52-595-389
Over Draw
Length: 145'-0"
SD 44 MRM 65.68


NH 0016(103)67 PCN 091A
Str. No. 52-433-330
Over Railroad
Length: 66'-0 1/4"
US 16B WB/EB MRM 67.89



3

November 5, 2025

ESTIMATE OF QUANTITIES AND ENVIRONMENTAL COMMITMENTS

	PROJECT	SECTION	SHEET
	NH 0016(103)67 & NH-P 0044(235)39	A	1/2

Revised: 9-25-25

Section C - Traffic Control PCN 091A

BID ITEM NUMBER	ITEM	QUANTITY	UNIT
009E0010	Mobilization	Lump Sum	LS
009E4100	Construction Schedule, Category I	Lump Sum	LS
634E0010	Flagging	50.0	Hour
634E0110	Traffic Control Signs	228.0	SqFt
634E0120	Traffic Control, Miscellaneous	Lump Sum	LS
634E0275	Type 3 Barricade	2	Each
634E0420	Type C Advance Warning Arrow Board	2	Each
634E0640	Temporary Pavement Marking	2,880	Ft

PCN 08JE

BID ITEM NUMBER	ITEM	QUANTITY	UNIT
009E0010	Mobilization	Lump Sum	LS
009E4100	Construction Schedule, Category I	Lump Sum	LS
634E0010	Flagging	100.0	Hour
634E0110	Traffic Control Signs	249.0	SqFt
634E0120	Traffic Control, Miscellaneous	Lump Sum	LS
634E0275	Type 3 Barricade	7	Each
634E0420	Type C Advance Warning Arrow Board	2	Each
634E0600	4" Temporary Pavement Marking Tape Type I	288	Ft
634E0640	Temporary Pavement Marking	3,820	Ft

Section E – Structure Structure No. 52-433-330 – US 16B – PCN 091A

BID ITEM NUMBER	ITEM	QUANTITY	UNIT
491E0005	Two Coat Bridge Deck Polymer Chip Seal	520.1	SqYd
491E0110	Abrasive Blasting of Bridge Deck	520.1	SqYd
491E0120	Bridge Deck Grinding	520.1	SqYd
491E0130	Concrete Removal, Class A	4.0	SqYd
491E0140	Concrete Removal, Class B	4.0	SqYd
491E0172	Concrete Patching Material, Bridge Deck	24.0	CuFt

Structure No. 52-595-389 – SD 44 – PCN 08JE

BID ITEM NUMBER	ITEM	QUANTITY	UNIT
491E0005	Two Coat Bridge Deck Polymer Chip Seal	471.4	SqYd
491E0110	Abrasive Blasting of Bridge Deck	471.4	SqYd
491E0120	Bridge Deck Grinding	471.4	SqYd
491E0130	Concrete Removal, Class A	14.0	SqYd
491E0140	Concrete Removal, Class B	14.0	SqYd
491E0172	Concrete Patching Material, Bridge Deck	89.2	CuFt

Structure No. 52 – 424 – 301 – PCN 08JE

BID ITEM NUMBER	ITEM	QUANTITY	UNIT
491E0005	Two Coat Bridge Deck Polymer Chip Seal	1,322.6	SqYd
491E0110	Abrasive Blasting of Bridge Deck	1,322.6	SqYd
491E0120	Bridge Deck Grinding	1,322.6	SqYd
491E0130	Concrete Removal, Class A	4.0	SqYd
491E0140	Concrete Removal, Class B	4.0	SqYd
491E0172	Concrete Patching Material, Bridge Deck	31.6	CuFt

Section M - Pavement Marking PCN 091A

BID ITEM NUMBER	ITEM	QUANTITY	UNIT
633E1220	High Build Waterborne Pavement Marking Paint, 4" White	165	Ft

PCN 08JE

BID ITEM NUMBER	ITEM	QUANTITY	UNIT
633E1220	High Build Waterborne Pavement Marking Paint, 4" White	384	Ft
633E1222	High Build Waterborne Pavement Marking Paint, 4" Yellow	651	Ft

INDEX OF SHEETS

A1 Estimate of Quantities for Sections C, E, and M
A1 to A2 Environmental Commitments

SPECIFICATIONS

Standard Specifications for Roads and Bridges, 10-1-25 Version, Required Provisions, and Special Provisions as included in the Proposal. The Standard Specifications for Roads and Bridges are available for download and viewing at <https://dot.sd.gov/doing-business/contractors/standard-specifications>.

ENVIRONMENTAL COMMITMENTS

The SDDOT is committed to protecting the environment and uses Environmental Commitments as a communication tool for the Engineer and Contractor to ensure that attention is given to avoid, minimize, and/or mitigate an environmental impact. Environmental commitments to various agencies and the public have been made to secure approval of this project. An agency with permitting authority can delay a project if identified environmental impacts have not been adequately addressed. Unless otherwise designated, the Contractor's primary contact regarding matters associated with these commitments will be the Project Engineer. During construction, the Project Engineer will verify that the Contractor has met Environmental Commitment

requirements. These environmental commitments are not subject to change without prior written approval from the SDDOT Environmental Office.

Additional guidance on SDDOT's Environmental Commitments can be accessed through the Environmental Procedures Manual found at: [<https://dot.sd.gov/media/documents/EnvironmentalProceduresManual.pdf>](https://dot.sd.gov/media/documents/EnvironmentalProceduresManual.pdf)

For questions regarding change orders in the field that may have an effect on an Environmental Commitment, the Project Engineer will contact the Environmental Engineer at 605-773-3180 or 605-773-4336 to determine whether an environmental analysis and/or resource agency coordination is necessary.

Once construction is complete, the Project Engineer will review all environmental commitments for the project and document their completion.

COMMITMENT B: FEDERALLY THREATENED, ENDANGERED, AND PROTECTED SPECIES

COMMITMENT B2: WHOOPING CRANE

The Whooping Crane is a spring and fall migratory bird in South Dakota that is about 5 feet tall and typically stops on wetlands, rivers, and agricultural lands along their migration route. An adult Whooping Crane is white with a red crown and a long, dark, pointed bill. Immature Whooping Cranes are cinnamon brown. While in flight, their long necks are kept straight and their long dark legs trail behind. Adult Whooping Cranes' black wing tips are visible during flight.

Action Taken/Required:

Harassment or other measures to cause the Whooping Crane to leave the site is a violation of the Endangered Species Act. If a Whooping Crane is sighted roosting in the vicinity of the project, borrow pits, or staging areas associated with the project, cease construction activities in the affected area until the Whooping Crane departs and immediately contact the Project Engineer. The Project Engineer will contact the Environmental Office so that the sighting can be reported to USFWS.

COMMITMENT C: WATER SOURCE

The Contractor will not withdraw water with equipment previously used outside the State of South Dakota or previously used in aquatic invasive species (AIS) positive waters within South Dakota without prior approval from the SDDOT

Environmental Office. To prevent and control the introduction and spread of invasive species into the project vicinity, all equipment will be power washed with hot water (≥140 °F) and completely dried for a minimum of 7 days prior to subsequent use. South Dakota administrative rule 41:10:04:02 forbids the possession and transport of AIS; therefore, all attached dirt, mud, debris and vegetation must be removed and all compartments and tanks capable of holding standing water must be drained. This includes, but is not limited to, all equipment, pumps, lines, hoses and holding tanks.

COMMITMENT C: WATER SOURCE, CONTINUED

Action Taken/Required:

The Contractor will obtain the necessary permits from the regulatory agencies such as the South Dakota Department of Agriculture and Natural Resources (DANR) and the United States Army Corps of Engineers (USACE) prior to water extraction activities.

Additional information and mapping of water sources impacted by Aquatic Invasive Species in South Dakota can be accessed at:
< <https://sdleastwanted.sd.gov/maps/default.aspx>>

< [South Dakota Administrative Rule 41:10:04 Aquatic Invasive Species: https://sdlegislature.gov/rules/DisplayRule.aspx?Rule=41:10:04](https://sdlegislature.gov/rules/DisplayRule.aspx?Rule=41:10:04) >

COMMITMENT E: STORM WATER

Construction activities constitute less than 1 acre of disturbance.

Action Taken/Required:

At a minimum and regardless of project size, appropriate erosion and sediment control measures must be installed to control the discharge of pollutants from the construction site.

COMMITMENT H: WASTE DISPOSAL SITE

The Contractor will furnish a site(s) for the disposal of construction and/or demolition debris generated by this project.

Action Taken/Required:

Construction and/or demolition debris may not be disposed of within the Public ROW.

The waste disposal site(s) will be managed and reclaimed in accordance with the following from the General Permit for Construction/Demolition Debris Disposal Under the South Dakota Waste Management Program issued by the Department of Agriculture and Natural Resources.

The waste disposal site(s) will not be located in a wetland, within 200 feet of surface water, or in an area that adversely affects wildlife, recreation, aesthetic value of an area, or any threatened or endangered species, as approved by the Environmental Office and the Project Engineer.

If the waste disposal site(s) is located such that it is within view of any ROW, the following additional requirements will apply:

1. Construction and/or demolition debris consisting of concrete, asphalt concrete, or other similar materials will be buried in a trench separate from wood debris. The final cover over the construction and/or demolition debris will consist of a minimum of 1 foot of soil capable of supporting vegetation. Waste disposal sites provided outside of the Public ROW will be seeded in accordance with Natural Resources Conservation Service recommendations. The seeding recommendations may be obtained through the appropriate County NRCS Office. The Contractor will control the access to waste disposal

sites not within the Public ROW with fences, gates, and placement of a sign or signs at the entrance to the site stating, "No Dumping Allowed".

2. Concrete and asphalt concrete debris may be stockpiled within view of the ROW for a period not to exceed the duration of the project. Prior to project completion, the waste will be removed from view of the ROW or buried, and the waste disposal site reclaimed as noted above.

The above requirements will not apply to waste disposal sites that are covered by an individual solid waste permit as specified in SDCL 34A-6-58, SDCL 34A-6-1.13, and ARSD 74:27:10:06. Failure to comply with the requirements stated above may result in civil penalties in accordance with South Dakota Solid Waste Law, SDCL 34A-6-1.31.

All costs associated with furnishing waste disposal site(s), disposing of waste, maintaining control of access (fence, gates, and signs), and reclamation of the waste disposal site(s) will be incidental to the various contract items.

COMMITMENT I: HISTORIC PRESERVATION OFFICE CLEARANCES

The SDDOT has obtained concurrence with the State Historic Preservation Office (SHPO or THPO) for all work included within the project limits and all department designated sources and designated option material sources, stockpile sites, storage areas, and waste sites provided within the plans.

Action Taken/Required:

All earth disturbing activities not designated within the plans require a cultural resource review prior to scheduling the pre-construction meeting. This work includes but is not limited to: Contractor furnished material sources, material processing sites, stockpile sites, storage areas, plant sites, and waste areas.

The Contractor will arrange and pay for a record search and when necessary, a cultural resource survey. The Contractor has the option to contact the state Archaeological Research Center (ARC) at 605-394-1936 or another qualified archaeologist, to obtain either a records search or a cultural resources survey. A record search might be sufficient for review if the site was previously surveyed; however, a cultural resources survey may need to be conducted by a qualified archaeologist.

The Contractor will provide ARC with the following: a topographical map or aerial view in which the site is clearly outlined, site dimensions, project number, and PCN. If applicable, provide evidence that the site has been previously disturbed by farming, mining, or construction activities with a landowner statement that artifacts have not been found on the site.

The Contractor will submit the cultural resources survey report to SDDOT Environmental Office, 700 East Broadway Avenue, Pierre, SD 57501-2586. SDDOT will submit the information to the appropriate SHPO/THPO. Allow **30 Days** from the date this information is submitted to the Environmental Engineer for SHPO/THPO review.

In the event of an inadvertent discovery of human remains, funerary objects, or if evidence of cultural resources is identified during project construction activities, then such activities within 100 feet of the inadvertent discovery will immediately cease and the Project Engineer will be immediately notified. The Project Engineer will contact the SDDOT Environmental Office, who will

contact the appropriate SHPO/THPO within 48 hours of the discovery to determine an appropriate course of action.

SHPO/THPO review does not relieve the Contractor of the responsibility for obtaining any additional permits and clearances for Contractor furnished material sources, material processing sites, stockpile sites, storage areas, plant sites, and waste areas that affect wetlands, threatened and endangered species, or waterways. The Contractor will not utilize a site known or suspected of having contaminated soil or water. The Contractor will provide the required permits and clearances to the Project Engineer at the preconstruction meeting.

COMMITMENT K: RAPID CITY AREA AIR QUALITY CONTROL ZONE

Administrative Rule of South Dakota (ARSD) 74:36:18:03 states that "no state facility or state contractor may engage in any construction activity or continuous operation activity within the Rapid City air quality control zone which may cause fugitive emissions of particulate to be released into the ambient air without first obtaining a permit issued by the board or the secretary."

Construction activity is defined as any temporary activity which involves the removal or alteration of the natural or pre-existing cover of one acre or more of land. One acre of surface area is based on a cumulative area of disturbance to be completed for the entire project. Construction activity will include, but not be limited to, stripping of topsoil, drilling, blasting, excavation, dredging, ditching, grading, street maintenance and repair, or earth moving. It also includes stockpiles, access roads, and disposal areas. An off-site disposal area of excess material will require an additional permit.

Action Taken/Required:

To be considered eligible for authorization to conduct a construction activity under the terms and conditions of this permit, the owner operator must submit a Notice of Intent (NOI) form. The form must be submitted to the address below at least seven business days prior to the anticipated date of beginning the construction activity.

South Dakota Department of Agriculture and Natural Resources Air Quality Program, 523 East Capitol, Joe Foss Building, Pierre, SD 57501-3181, Phone: 605-773-3151.

The permit requires the Contractor to use reasonably available technology to control fugitive dust emissions. The Contractor is required to use control measures for track out, paved areas, unpaved roads, unpaved parking lots, disturbed areas, and for material handling and storage. The control measures that the Contractor is required to use are listed in the permit.

The Rapid City Air Quality Permit will need to be renewed annually by the Contractor until construction activities are completed.

The online form can be found at:
<<https://danr.sd.gov/Environment/AirQuality/PermitForms/Forms/NOIConstruction%2021.docx>>