

ESTIMATE OF QUANTITIES

BID ITEM NUMBER	ITEM	QUANTITY	UNIT
009E0010	Mobilization	Lump Sum	LS
009E4100	Construction Schedule, Category I	Lump Sum	LS
250E0010	Incidental Work	Lump Sum	LS
634E0110	Traffic Control Signs	89.7	SqFt
634E0120	Traffic Control, Miscellaneous	Lump Sum	LS
634E0275	Type 3 Barricade	1	Each
634E0420	Type C Advance Warning Arrow Board	1	Each
635E6200	Miscellaneous, Electrical	Lump Sum	LS
635E8120	2" Rigid Conduit, Schedule 40	1,020	Ft
635E9014	1/C #4 AWG Copper Wire	4,720	Ft
635E9016	1/C #6 AWG Copper Wire	10,080	Ft
635E9710	2/C #10 AWG Copper Pole and Bracket Cable	715	Ft

ENVIRONMENTAL COMMITMENTS

The SDDOT is committed to protecting the environment and uses Environmental Commitments as a communication tool for the Engineer and Contractor to ensure that attention is given to avoid, minimize, and/or mitigate an environmental impact. Environmental commitments to various agencies and the public have been made to secure approval of this project. An agency with permitting authority can delay a project if identified environmental impacts have not been adequately addressed. Unless otherwise designated, the Contractor's primary contact regarding matters associated with these commitments will be the Project Engineer. During construction, the Project Engineer will verify that the Contractor has met Environmental Commitment requirements. These environmental commitments are not subject to change without prior written approval from the SDDOT Environmental Office.

Additional guidance on SDDOT's Environmental Commitments can be accessed through the Environmental Procedures Manual found at: <https://dot.sd.gov/media/documents/EnvironmentalProceduresManual.pdf> >

For questions regarding change orders in the field that may have an effect on an Environmental Commitment, the Project Engineer will contact the Environmental Engineer at 605-773-3180 or 605-773-4336 to determine whether an environmental analysis and/or resource agency coordination is necessary.

Once construction is complete, the Project Engineer will review all environmental commitments for the project and document their completion.

COMMITMENT C: WATER SOURCE

The Contractor will not withdraw water with equipment previously used outside the State of South Dakota or previously used in aquatic invasive species (AIS) positive waters within South Dakota without prior approval from the SDDOT Environmental Office. To prevent and control the introduction and spread of invasive species into the project vicinity, all equipment will be power washed with hot water (≥140 °F) and completely dried for a minimum of 7 days prior to subsequent use. South Dakota administrative rule 41:10:04:02 forbids the possession and transport of AIS; therefore, all attached dirt, mud, debris and vegetation must be removed and all compartments and tanks capable of holding standing water must be drained. This includes, but is not limited to, all equipment, pumps, lines, hoses and holding tanks.

Action Taken/Required:

The Contractor will obtain the necessary permits from the regulatory agencies such as the South Dakota Department of Agriculture and Natural Resources (DANR) and the United States Army Corps of Engineers (USACE) prior to water extraction activities.

Additional information and mapping of water sources impacted by Aquatic Invasive Species in South Dakota can be accessed at:

< <https://sdleastwanted.sd.gov/maps/default.aspx> >

< [South Dakota Administrative Rule 41:10:04 Aquatic Invasive Species: https://sdlegislature.gov/rules/DisplayRule.aspx?Rule=41:10:04](https://sdlegislature.gov/rules/DisplayRule.aspx?Rule=41:10:04) >

COMMITMENT D: WATER QUALITY STANDARDS

COMMITMENT D1: SURFACE WATER QUALITY

This project may be in the vicinity of multiple streams and wetlands. These waters are considered waters of the state and are protected under Administrative Rules of South Dakota (ARSD) Chapter 74:51. Special construction measures may have to be taken to ensure that this water body is not impacted.

Action Taken/Required:

The Contractor is advised that the South Dakota Surface Water Quality Standards, administered by the South Dakota Department of Agriculture and Natural Resources (DANR), apply to this project. Special construction measures will be taken to ensure the above standard(s) of the surface waters are maintained and protected.

COMMITMENT E: STORM WATER

Construction activities constitute less than 1 acre of disturbance.

Action Taken/Required:

At a minimum and regardless of project size, appropriate erosion and sediment control measures must be installed to control the discharge of pollutants from the construction site.

COMMITMENT H: WASTE DISPOSAL SITE

The Contractor will furnish a site(s) for the disposal of construction and/or demolition debris generated by this project.

Action Taken/Required:

Construction and/or demolition debris may not be disposed of within the Public ROW.

The waste disposal site(s) will be managed and reclaimed in accordance with the following from the General Permit for Construction/Demolition Debris Disposal Under the South Dakota Waste Management Program issued by the Department of Agriculture and Natural Resources.

The waste disposal site(s) will not be located in a wetland, within 200 feet of surface water, or in an area that adversely affects wildlife, recreation, aesthetic value of an area, or any threatened or endangered species, as approved by the Environmental Office and the Project Engineer.

If the waste disposal site(s) is located such that it is within view of any ROW, the following additional requirements will apply:

1. Construction and/or demolition debris consisting of concrete, asphalt concrete, or other similar materials will be buried in a trench separate from wood debris. The final cover over the construction and/or demolition debris will consist of a minimum of 1 foot of soil capable of supporting vegetation. Waste disposal sites provided outside of the Public ROW will be seeded in accordance with Natural Resources Conservation Service recommendations. The seeding recommendations may be obtained through the appropriate County NRCS Office. The Contractor will control the access to waste disposal sites not within the Public ROW with fences, gates, and placement of a sign or signs at the entrance to the site stating, "No Dumping Allowed".
2. Concrete and asphalt concrete debris may be stockpiled within view of the ROW for a period not to exceed the duration of the project. Prior to project completion, the waste will be removed from view of the ROW or buried, and the waste disposal site reclaimed as noted above.

The above requirements will not apply to waste disposal sites that are covered by an individual solid waste permit as specified in SDCL 34A-6-58, SDCL 34A-6-1.13, and ARSD 74:27:10:06. Failure to comply with the requirements stated above may result in civil penalties in accordance with South Dakota Solid Waste Law, SDCL 34A-6-1.31.

All costs associated with furnishing waste disposal site(s), disposing of waste, maintaining control of access (fence, gates, and signs), and reclamation of the waste disposal site(s) will be incidental to the various contract items.

COMMITMENT I: HISTORIC PRESERVATION OFFICE CLEARANCES

The SDDOT has obtained concurrence with the State Historic Preservation Office (SHPO or THPO) for all work included within the project limits and all department designated sources and designated option material sources, stockpile sites, storage areas, and waste sites provided within the plans.

**COMMITMENT I: HISTORIC PRESERVATION OFFICE CLEARANCES
(CONTINUED)**

Action Taken/Required:

All earth disturbing activities not designated within the plans require a cultural resource review prior to scheduling the pre-construction meeting. This work includes but is not limited to: Contractor furnished material sources, material processing sites, stockpile sites, storage areas, plant sites, and waste areas.

The Contractor will arrange and pay for a record search and when necessary, a cultural resource survey. The Contractor has the option to contact the state Archaeological Research Center (ARC) at 605-394-1936 or another qualified archaeologist, to obtain either a records search or a cultural resources survey. A record search might be sufficient for review if the site was previously surveyed; however, a cultural resources survey may need to be conducted by a qualified archaeologist.

The Contractor will provide ARC with the following: a topographical map or aerial view in which the site is clearly outlined, site dimensions, project number, and PCN. If applicable, provide evidence that the site has been previously disturbed by farming, mining, or construction activities with a landowner statement that artifacts have not been found on the site.

The Contractor will submit the cultural resources survey report to SDDOT Environmental Office, 700 East Broadway Avenue, Pierre, SD 57501-2586. SDDOT will submit the information to the appropriate SHPO/THPO. Allow **30 Days** from the date this information is submitted to the Environmental Engineer for SHPO/THPO review.

In the event of an inadvertent discovery of human remains, funerary objects, or if evidence of cultural resources is identified during project construction activities, then such activities within 100 feet of the inadvertent discovery will immediately cease and the Project Engineer will be immediately notified. The Project Engineer will contact the SDDOT Environmental Office, who will contact the appropriate SHPO/THPO within 48 hours of the discovery to determine an appropriate course of action.

SHPO/THPO review does not relieve the Contractor of the responsibility for obtaining any additional permits and clearances for Contractor furnished material sources, material processing sites, stockpile sites, storage areas, plant sites, and waste areas that affect wetlands, threatened and endangered species, or waterways. The Contractor will not utilize a site known or suspected of having contaminated soil or water. The Contractor will provide the required permits and clearances to the Project Engineer at the preconstruction meeting.

SUPPLYING AS BUILT PLANS

If the roadway lighting system is constructed differently than what is stated in the plans, the Contractor will supply as built plans to the Engineer and a copy will be sent to the Traffic Design Engineer. The as built plans may include conduit layouts, wiring diagrams, or other drawings depicting the changes from the original plans.

INCIDENTAL WORK

Incidental work includes, but is not limited to, the restoration of all disturbed areas to the satisfaction of the Engineer.

MISCELLANEOUS, ELECTRICAL

Existing wiring and pole and bracket cable in this project will be disconnected at each pole and junction box, removed, and disposed of by the contractor. New wires and pole and bracket cable will be repulled and hooked up such that each luminaire is fully operational.

The Contractor will coordinate with Black Hills Energy for de-energizing and re-energizing of the existing 240/480 v.a.c. electrical service at STA 31+00-170' R (Latitude 44.386407, Longitude -103.716542).

The Black Hills Energy contact is Ken Meirose at 605-390-6731 and ken.meirose@blackhillscorp.com.

All costs associated with disconnecting, removing, and disposing of existing wiring and pole and bracket cable will be incidental to the contract lump sum price for "Miscellaneous, Electrical".

All costs associated with coordinating, de-energizing, and re-energizing of the electric service will be incidental to the contract lump sum price for "Miscellaneous, Electrical".

WIRE SPLICING FOR LIGHTING

All wire splices for lighting will be made using TE Connectivity GTAP connectors, NSI Industries Polaris Blue connectors, or an approved equal.

CONDUIT REPAIR


There may be locations where the conduit is damaged and may need to be repaired. These locations are unknown. The expectation is that increments of no more than 200 feet of conduit will need to be repaired and will total no more than 1,000 ft of conduit. The Contractor will be responsible for isolating the damaged conduit and repairing it. All costs associated with locating and repairing conduit will be incidental to the contract unit price per foot for "2 Rigid Conduit, Schedule 40".

JUNCTION BOX JB2-JB4

The #6 wires between A18 and JB2, between JB2 and JB3, and between JB3 and JB4 will be disconnected, removed, and disposed of. All costs associated with disconnecting, removing, and disposing of existing wiring will be incidental to the contract lump sum price for "Miscellaneous, Electrical".

LUMINAIRE POLE A21

New conduit and #6 wires will be spliced from existing junction box JD2 and will intercept the existing conduit which connects to luminaire pole A21. The #6 wires in this existing conduit will be disconnected, removed, disposed of, and replaced with new #6 wires. The new #6 wires will be reconnected to ensure the light on luminaire pole A21 is operational. All costs associated with modifying existing conduit, and disconnecting, removing, and disposing of existing wiring will be incidental to the contract unit price per foot for "2 Rigid Conduit, Schedule 40".

	PROJECT	SECTION	SHEET
	NH 014A(36)41	NON	3 of 14

Plotting Date: 3/24/2026 Revised 03/24/2026 ED

UTILITIES

The Contractor will contact the involved utility companies through South Dakota One Call (1-800-781-7474) prior to starting work. It will be the responsibility of the Contractor to coordinate work with the utility owners to avoid damage to existing facilities. If utilities are identified near the improvement area through the SD One Call Process as required by South Dakota Codified Law 49-7A and Administrative Rule Article 20:25, the Contractor will contact the Engineer to determine modifications that will be necessary to avoid utility impacts.

Arthur Turner
Lumen
612 Mt Rushmore Rd
Rapid City, SD 57701
O: (605) 394-4577
C: (605) 645-3757
E: Arthur.Turner@Lumen.com

Al Mullinix
Midcontinent Communications (Midco)
1305 N Terry Avenue
Sioux Falls, SD 57107
O: 605-231-0388
E: Al.Mullinix@Midco.com

Jerome Hardy
Bluepeak
809 Deadwood Ave
Rapid City, SD 57702
C: (605) 786-5453
E: Jerome.Hardy@MyBluepeak.com

Ryan Smith
SDN Communications
2900 W 10th St.
Sioux Falls SD 57104
O: (605) 978-1059
C: (605) 209-2338
E: Ryan.Smith@SDNCommunications.com

Ken Meirose
Black Hills Energy
1251 Otter Road
Sturgis, SD 57785
O: (605) 206-2968
E: Ken.Meirose@BlackHillsCorp.com
On-Site Contact: Aaron Scherer
C: 605-645-3904
E: Aaron.Scherer@BlackHillsCorp.com

Dave Schneider
Montana-Dakota Utilities Group
505 Heritage Ave
Spearfish, SD 57783
C: (605) 591-9616
E: David.Schneider@MDU.com
On-Site Contact: Bryant Schmutz
C: 605-569-0122
E: Bryant.Schmutz@mdu.com

UTILITIES (CONTINUED)

Kevin Kuchenbecker – City Planner
City of Deadwood
108 Sherman St.
Deadwood, SD 57732
O:605-578-2082
E: Kevin@CityofDeadwood.com

Terry Wolterstorff – Director
Lead-Deadwood Sanitary District
60 Crescent St.
Deadwood, SD 57732
O:605-578-1835
C:605-578-1287
E: Terry.LDSD@outlook.com

SEQUENCE OF OPERATIONS

The Contractor will submit a sequence of operations for approval two weeks prior to the preconstruction meeting. If changes to the sequence of operations are proposed during the project, these must be submitted for review a minimum of one week prior to potential implementation. Approval for changes to the sequence of operations will only be allowed when the proposed changes meet with the Department's intent for traffic control and sequencing of the work.

GENERAL TRAFFIC CONTROL

Existing guide, route, informational logo, regulatory, and warning signs will be temporarily reset and maintained during construction. Removing, relocating, covering, salvaging, and resetting of existing traffic control devices, including delineation, will be the responsibility of the Contractor. Cost for this work will be incidental to the contract unit prices for the various items unless otherwise specified in the plans. Any delineators and signs damaged or lost will be replaced by the Contractor at no cost to the State.

All temporary traffic control sign locations will be set in the field by the Contractor and verified by the Engineer prior to installation.

Portable sign supports will not be located on sidewalks, bicycle facilities, or other areas designated for pedestrian or bicycle traffic.

If there is a discrepancy between the traffic control plans, standard plates, and the MUTCD, whichever is more stringent will be used, as determined by the Engineer.

Unless otherwise stated in these plans, work will not be allowed during hours of darkness.

Fixed location signing placed more than 4 calendar days prior to the start of construction will be covered or laid down until the time of construction. The covers must be approved by the Engineer prior to installation. The cost of materials, labor, and equipment necessary to complete this work will be incidental to other contract items. No separate payment will be made.

All fixed location signs, sign posts, and breakaway bases will be removed within 7 calendar days following pavement marking.

Temporary flexible vertical markers (tab's) used in overnight lane closure tapers will be incidental to Traffic Control, Miscellaneous.

PRESS RELEASE ANNOUNCEMENTS

The SDDOT will prepare a press release to be released 5 days prior to any phase change or any other major change that affects traffic flow. The SDDOT will be responsible to keep law enforcement, emergency services, and the traveling public notified of changes in project access. The Contractor will provide the Engineer with pertinent information 7 days prior to any phase change or any other major change that affects traffic flow.

TRAFFIC CONTROL SIGNS

ITEMIZED LIST FOR TRAFFIC CONTROL SIGNS

SIGN CODE	SIGN DESCRIPTION	CONVENTIONAL ROAD			
		NUMBER	SIGN SIZE	SQFT PER SIGN	SQFT
R1-1	STOP	1	30"	5.2	5.2
W4-2	LEFT or RIGHT LANE ENDS (symbol)	1	48" x 48"	16.0	16.0
W20-1	ROAD WORK AHEAD	3	48" x 48"	16.0	48.0
W20-5	LEFT or RIGHT LANE CLOSED AHEAD	1	48" x 48"	16.0	16.0
G20-2	END ROAD WORK	1	36" x 18"	4.5	4.5
CONVENTIONAL ROAD TRAFFIC CONTROL SIGNS SQFT					89.7



PROJECT	SECTION	SHEET
NH 014A(36)41	NON	4 of 14

Plotting Date: 3/20/2026

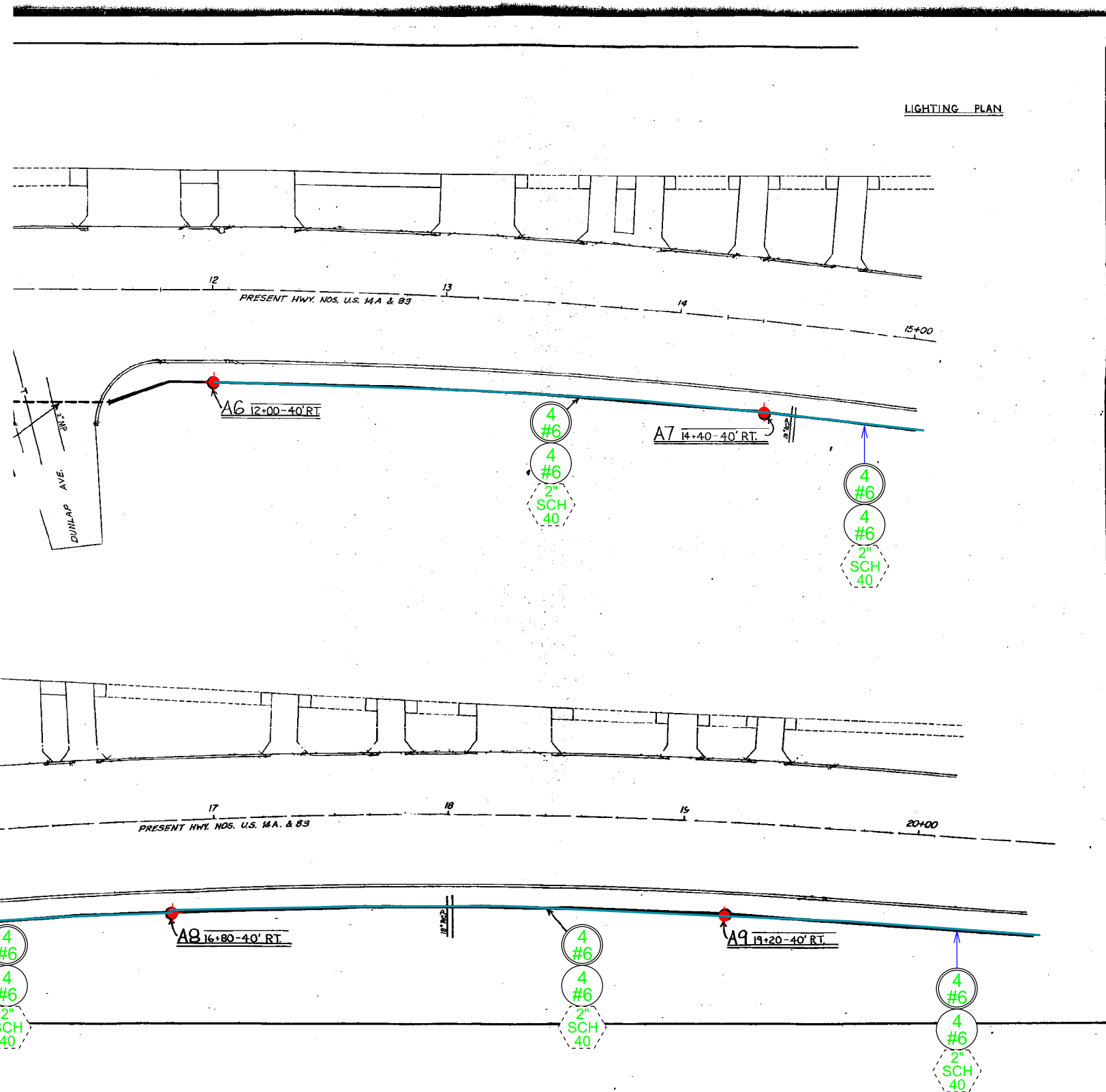
WIRING LAYOUT US HWY 14A



ESTIMATE OF QUANTITIES			
KEY	ITEM	EST QUANT	UNIT
	2" Rigid Conduit, Schedule 40	1,020	FT
	1/C #4 AWG Copper Wire	4,720	FT
	1/C #6 AWG Copper Wire	10,080	FT
	2/C #10 AWG Copper Pole & Bracket Cable	715	FT

REMOVE ITEMS	
KEY	ITEM
	1/C #4 AWG Copper Wire
	1/C #6 AWG Copper Wire
	2/C #10 AWG Copper Pole & Bracket Cable

EXISTING ITEMS	
KEY	ITEM
	Luminaire Pole 40' Mounting Height w/ 4' Arm (A6-A15, A17, A18, A21)
	Junction Box (JB1-JB4)
	2" Rigid Conduit, Schedule 40
	2" Rigid Conduit, Schedule 80



NOTE: This sheet was obtained from a previous construction plan set.
This sheet is included to show conduit location and wire size.
The topography may not be accurate and the sheet may not be to scale.

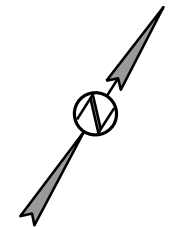
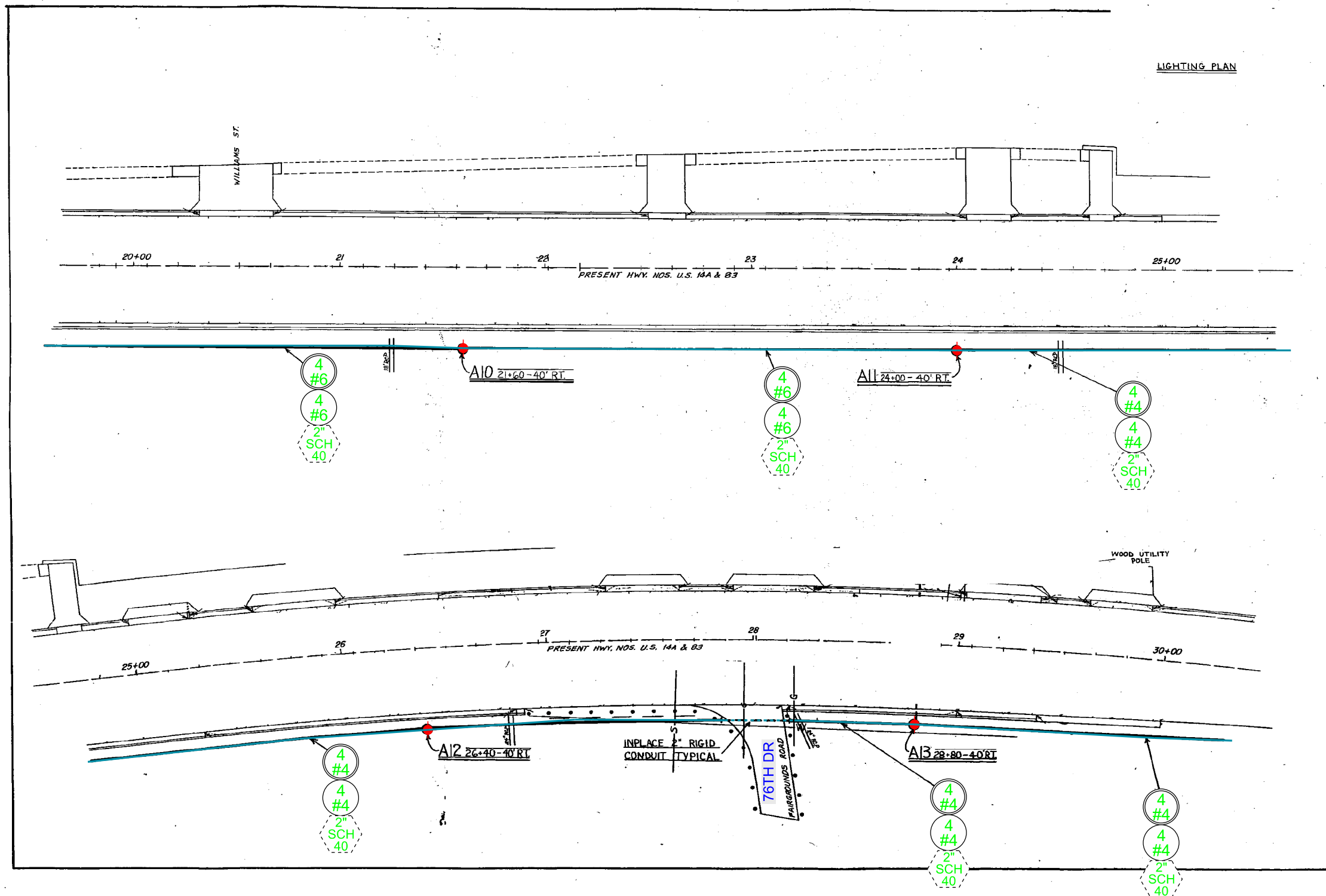
WIRING LAYOUT US HWY 14A



PROJECT
NH 014A(36)41

SECTION SHEET
NON 7 of 14

Plotting Date: 3/20/2026

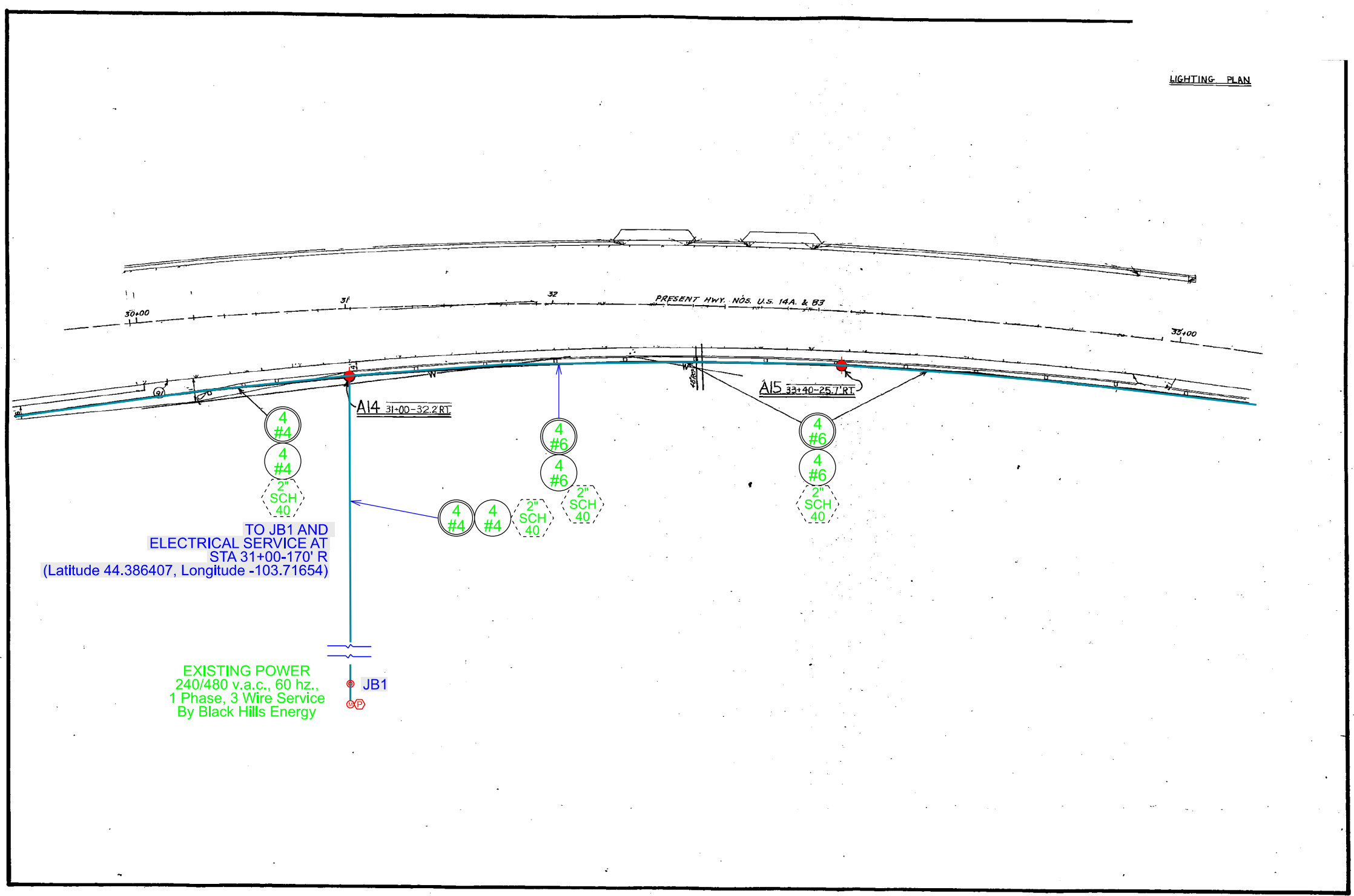


NOTE: This sheet was obtained from a previous construction plan set.
This sheet is included to show conduit location and wire size.
The topography may not be accurate and the sheet may not be to scale.

WIRING LAYOUT US HWY 14A

SD DOT	PROJECT	SECTION	SHEET
	NH 014A(36)41	NON	8 of 14

Plotting Date: 3/20/2026



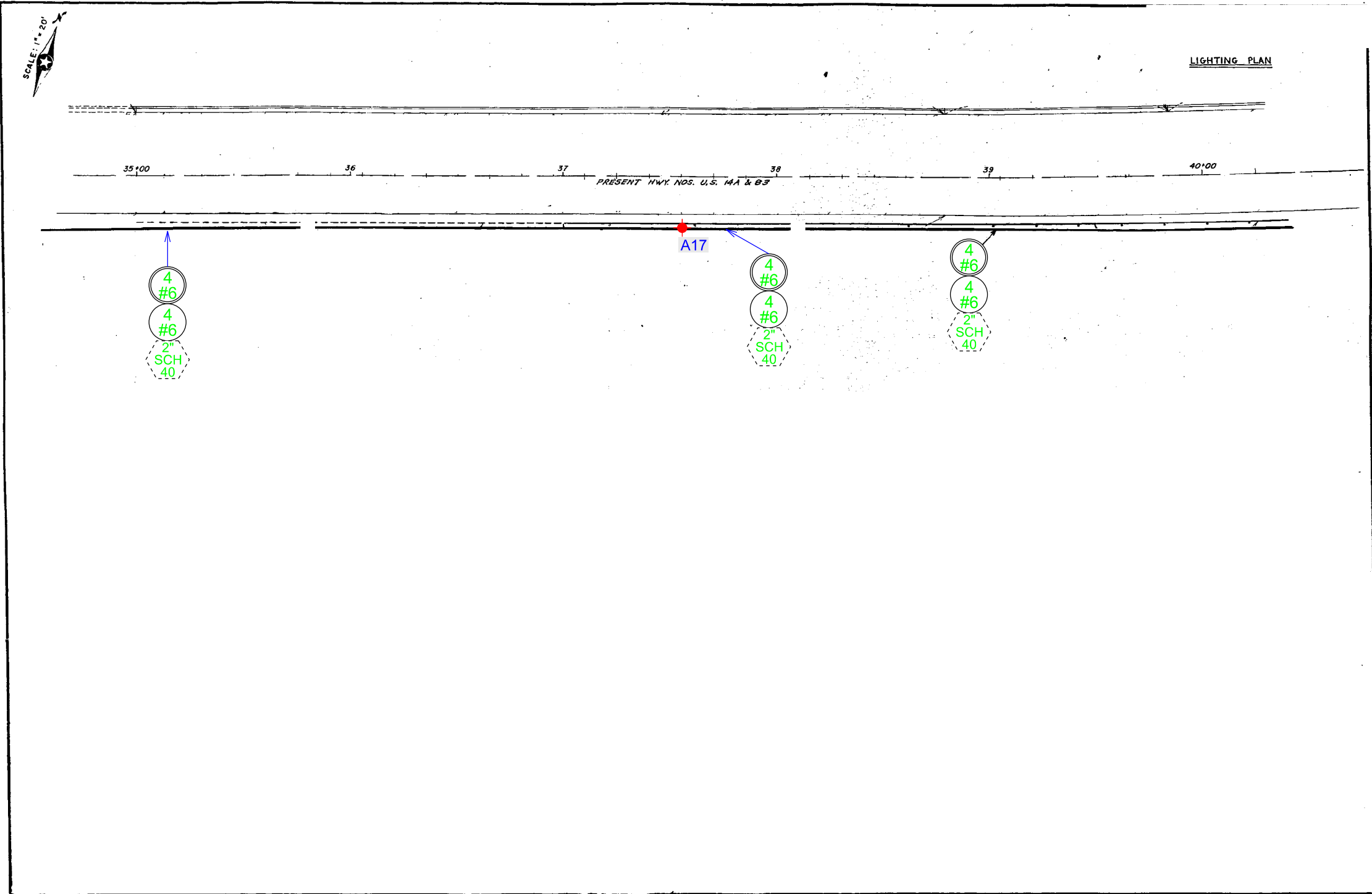
NOTE: This sheet was obtained from a previous construction plan set.
This sheet is included to show conduit location and wire size.
The topography may not be accurate and the sheet may not be to scale.

WIRING LAYOUT US HWY 14A



PROJECT	SECTION	SHEET
NH 014A(36)41	NON	9 of 14

Plotting Date: 3/20/2026

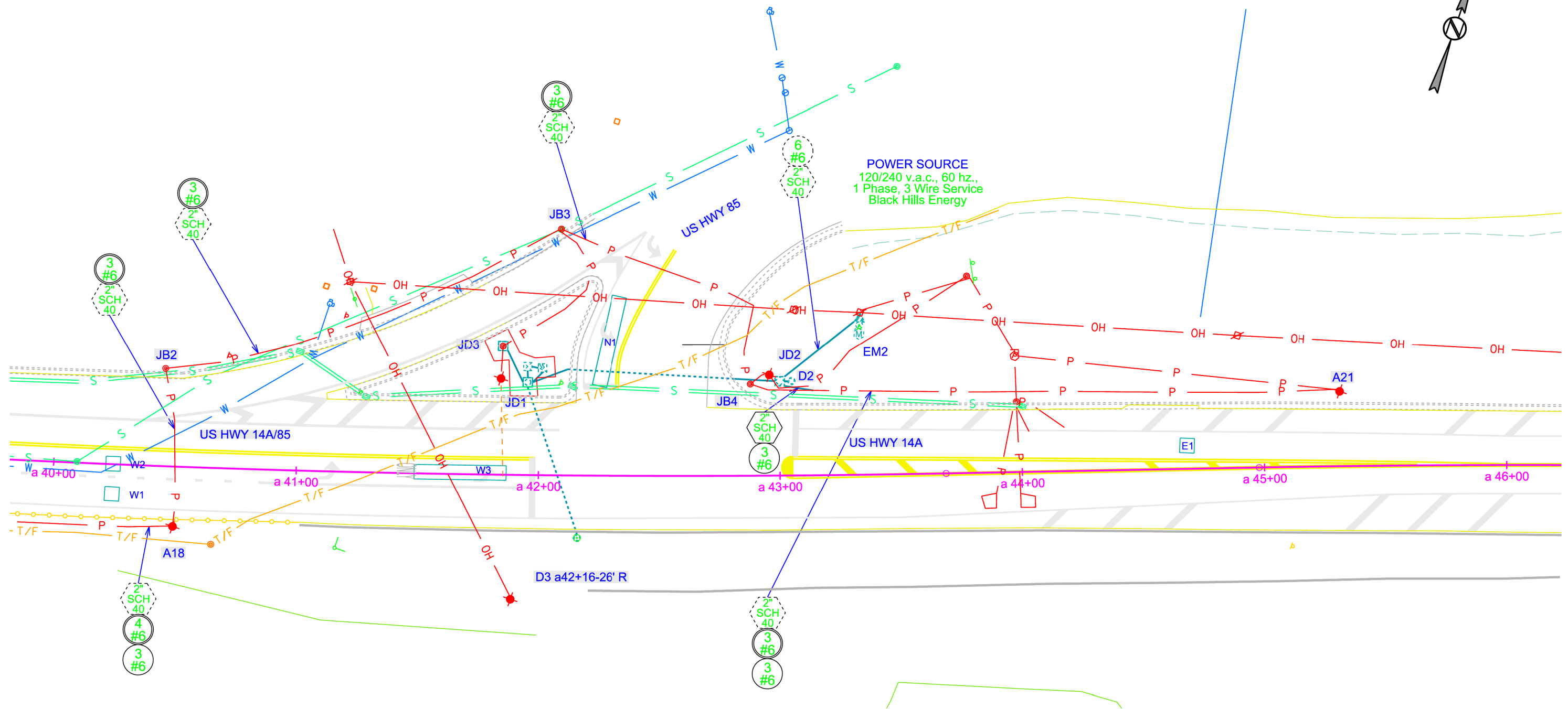


NOTE: This sheet was obtained from a previous construction plan set.
This sheet is included to show conduit location and wire size.
The topography may not be accurate and the sheet may not be to scale.

WIRING LAYOUT US HWY 14A

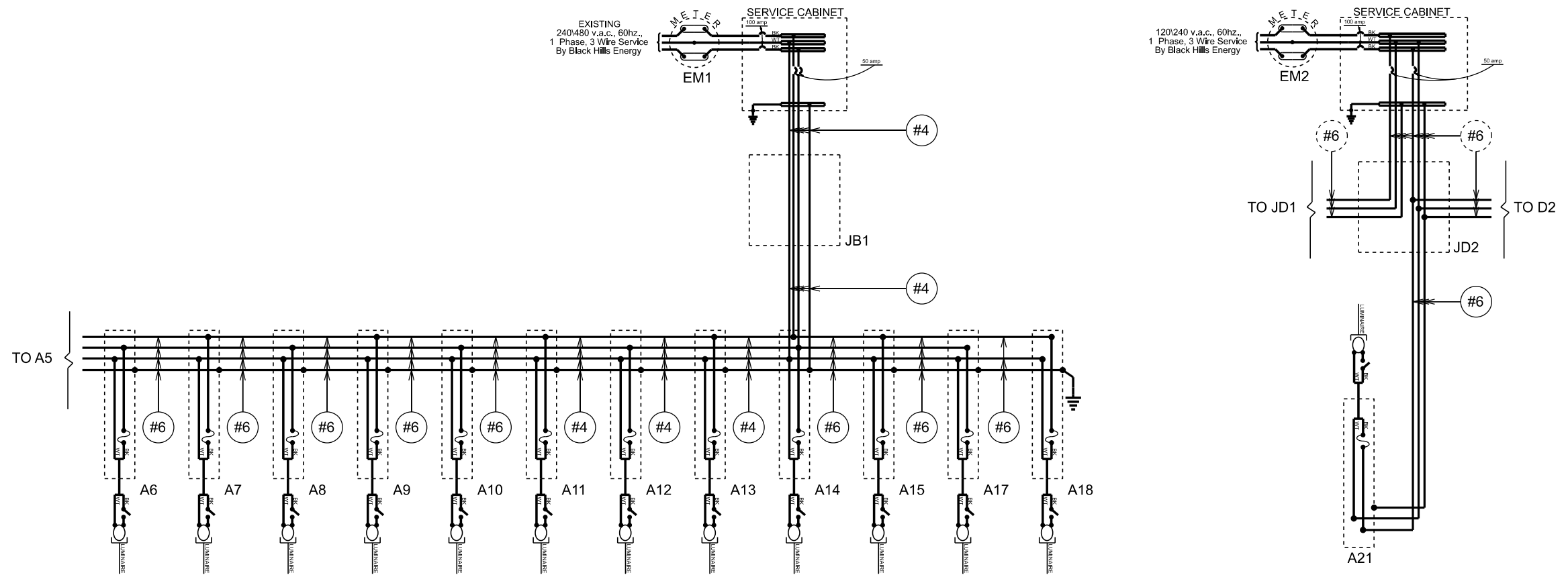
SD DOT	PROJECT	SECTION	SHEET
	NH 014A(36)41	NON	10 of 14

Plotting Date: 3/20/2026



WIRING DIAGRAM

	PROJECT	SECTION	SHEET
	NH 014A(36)41	NON	11 of 14
Plotting Date: 3/20/2026			



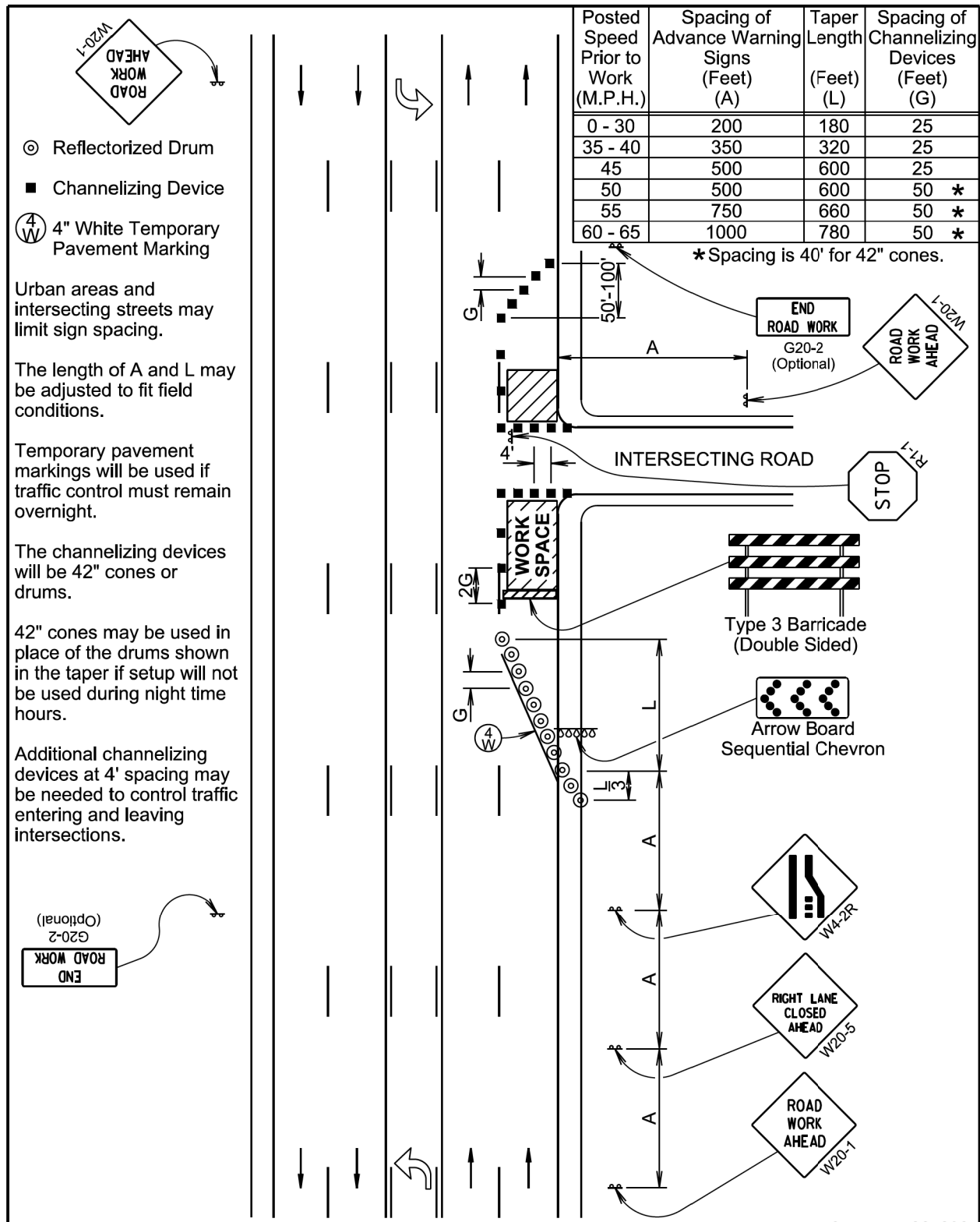
LEGEND:

FUSE: 10 amp.

LUMINAIRE: LED

LUMINAIRE PHOTOCELL (TYPICAL OF ALL)

NOTE:
 All circuits shall be bonded in accordance with the NATIONAL ELECTRICAL CODE. Quantities for bonding conductors are not included in these plans.



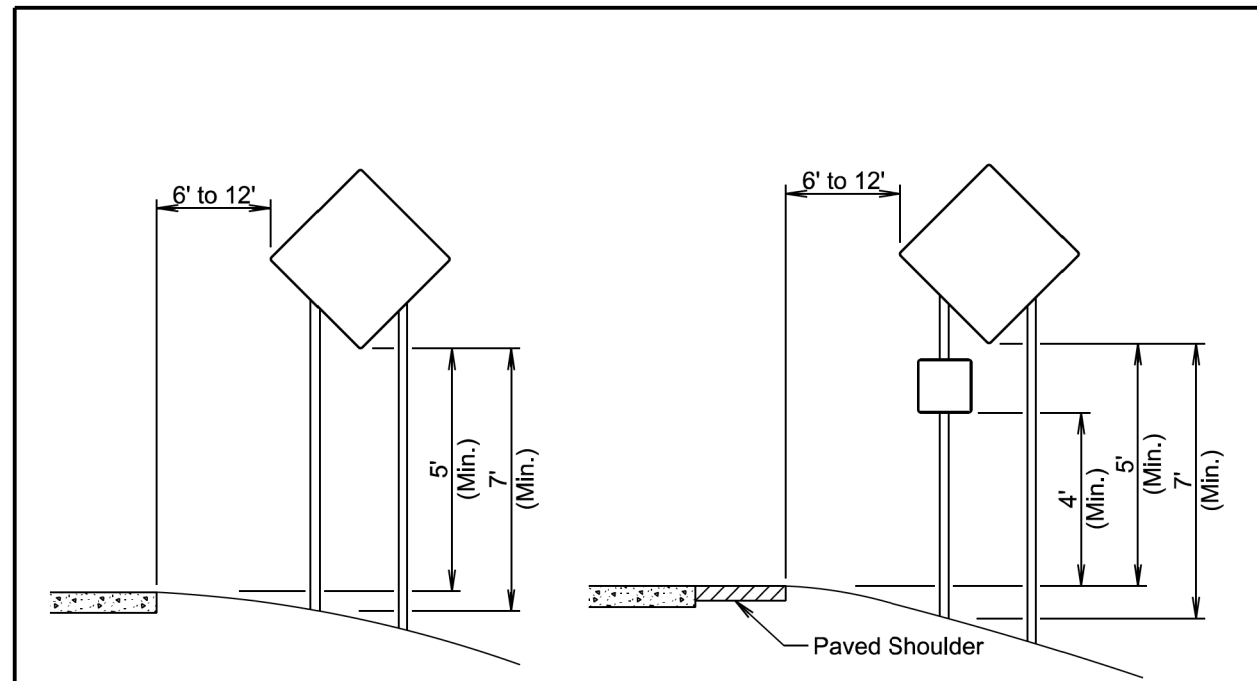
◎ Reflectorized Drum
 ■ Channelizing Device
 ④ 4" White Temporary Pavement Marking

Urban areas and intersecting streets may limit sign spacing.
 The length of A and L may be adjusted to fit field conditions.
 Temporary pavement markings will be used if traffic control must remain overnight.
 The channelizing devices will be 42" cones or drums.
 42" cones may be used in place of the drums shown in the taper if setup will not be used during night time hours.
 Additional channelizing devices at 4' spacing may be needed to control traffic entering and leaving intersections.

September 22, 2021

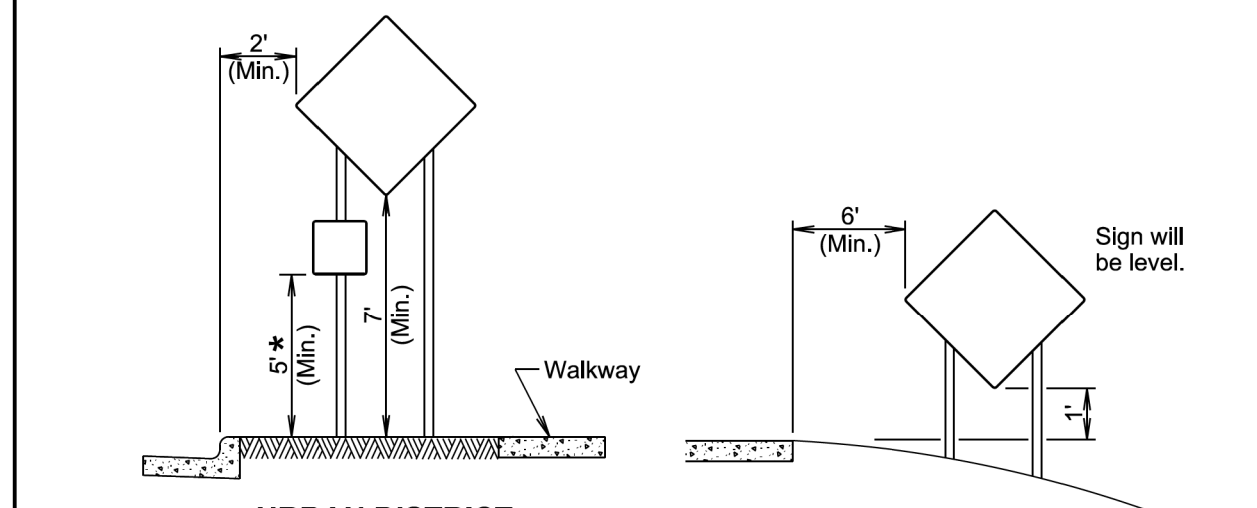
SD DOT	5-LANE, OUTSIDE LANE CLOSED	PLATE NUMBER 634.60
		Sheet 1 of 1

Published Date: 2026



RURAL DISTRICT

RURAL DISTRICT WITH SUPPLEMENTAL PLATE



URBAN DISTRICT

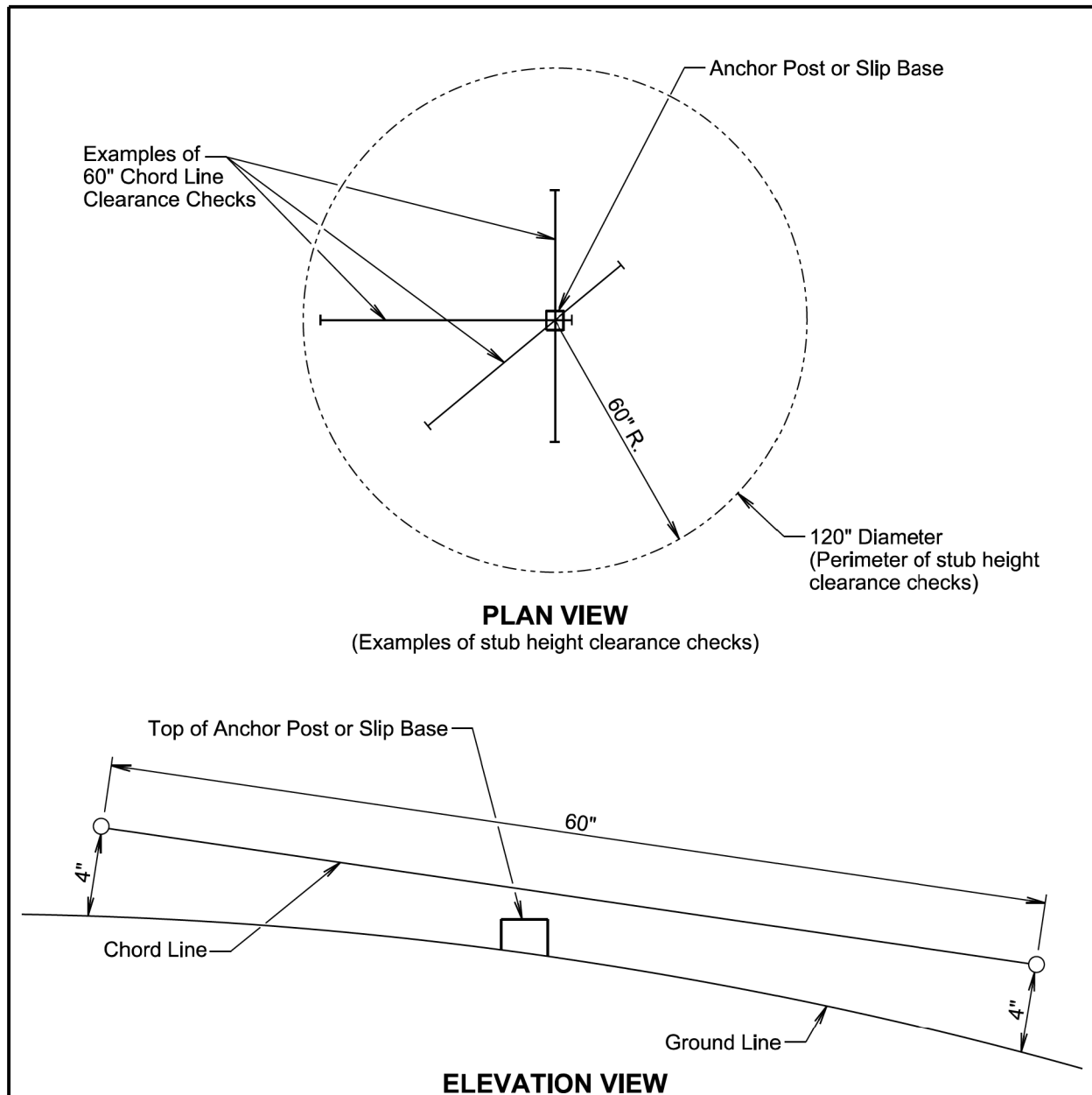
RURAL DISTRICT 3 DAY MAXIMUM

* If the bottom of supplemental plate is mounted lower than 7 feet above a pedestrian walkway, the supplemental plate should not project more than 4" into the pedestrian facility.

January 22, 2021

SD DOT	CRASHWORTHY SIGN SUPPORTS (Typical Construction Signing)	PLATE NUMBER 634.85
		Sheet 1 of 1

Published Date: 2026



PLAN VIEW
(Examples of stub height clearance checks)

ELEVATION VIEW

GENERAL NOTES:

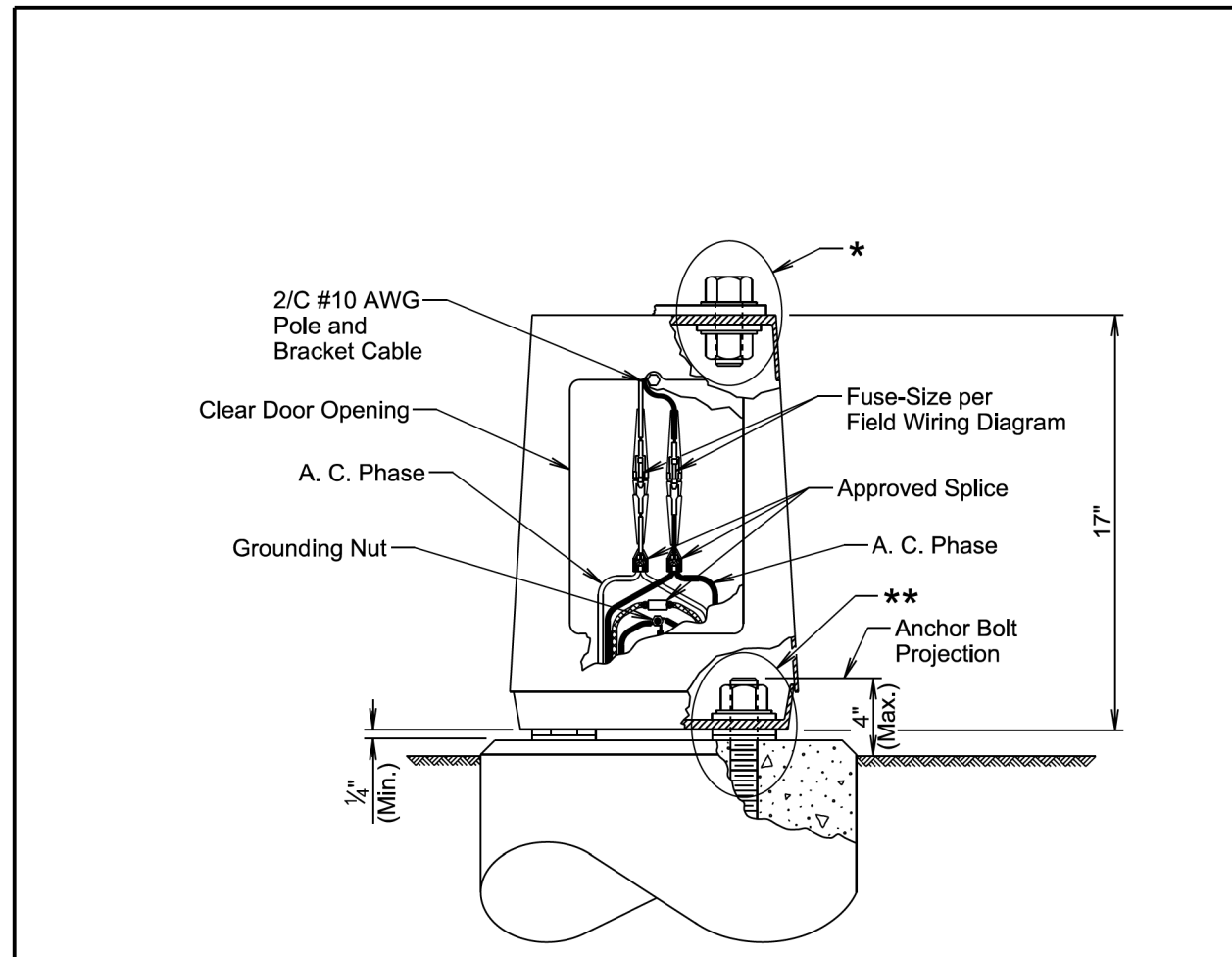
The top of anchor posts and slip bases WILL NOT extend above a 60" chord line within a 120" diameter circle around the post with ends 4" above the ground.

At locations where there is curb and gutter adjacent to the breakaway sign support, the stub height will be a maximum of 4" above the ground line at the localized area adjacent to the breakaway support stub.

The 4" stub height clearance is not necessary for U-channel lap splices where the support is designed to yield (bend) at the base.

January 22, 2021

Published Date: 2026	SD DOT	BREAKAWAY SUPPORT STUB CLEARANCE	PLATE NUMBER 634.99
			Sheet 1 of 1



GENERAL NOTES:

Base details are provided for example only and are not intended to be a complete design.

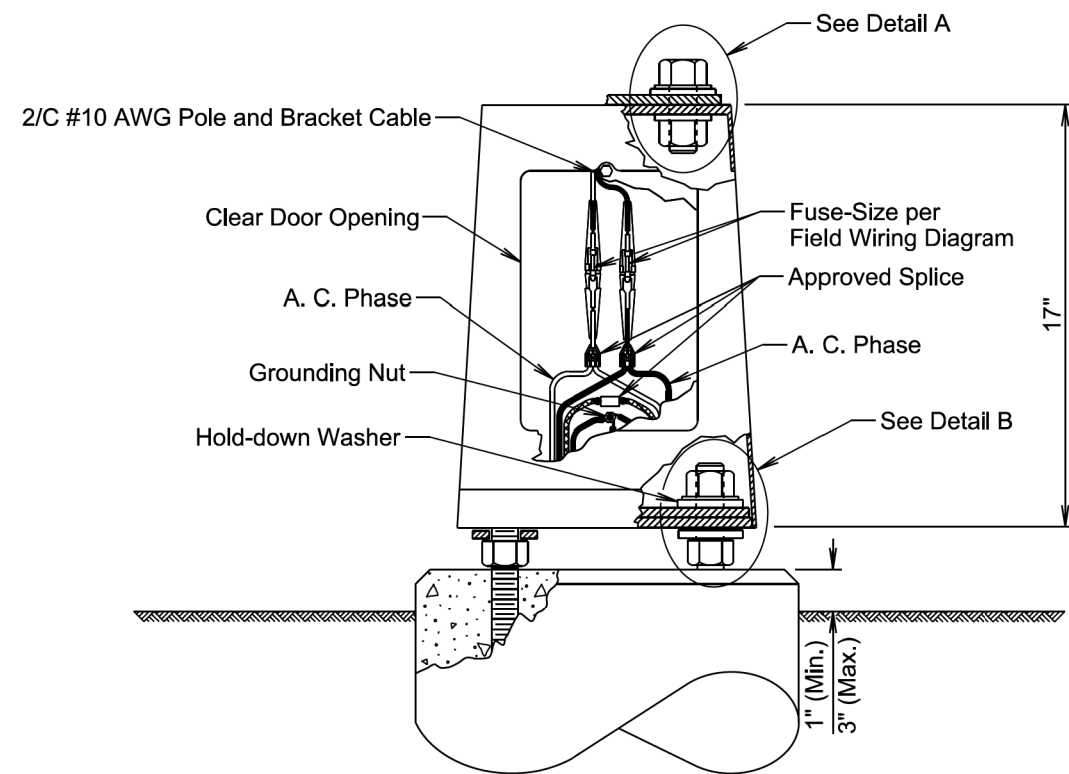
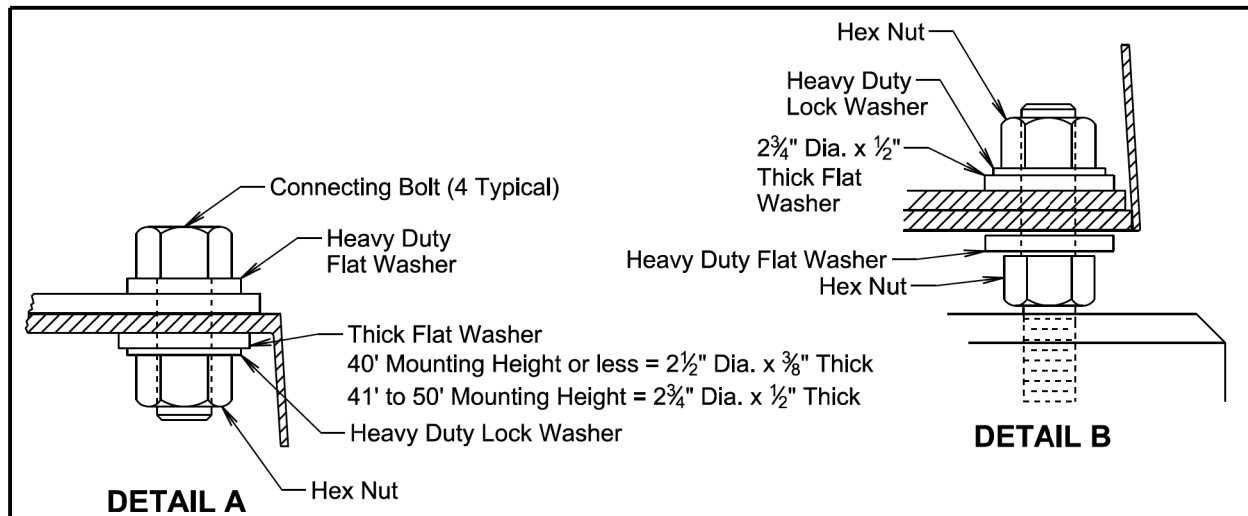
Fused connectors will be breakaway type.

* Hardware connecting the pole to the base will be installed in accordance with the manufacturer's recommendation.

** Hardware connecting the base to the footing will be installed in accordance with the manufacturer's recommendation. The Contractor will install leveling devices in accordance with the manufacturer's recommendation if shimming is necessary to install the light poles plumb and level. The washers and shims will be installed around the anchor bolts.

November 19, 2022

Published Date: 2026	SD DOT	ROADWAY LUMINAIRE POLE BREAKAWAY TRANSFORMER BASE	PLATE NUMBER 635.21
			Sheet 1 of 1



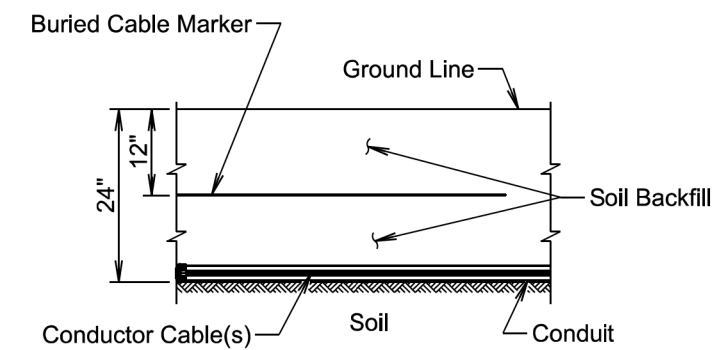
GENERAL NOTES:

Base details are provided for example only and are not intended to be a complete design.

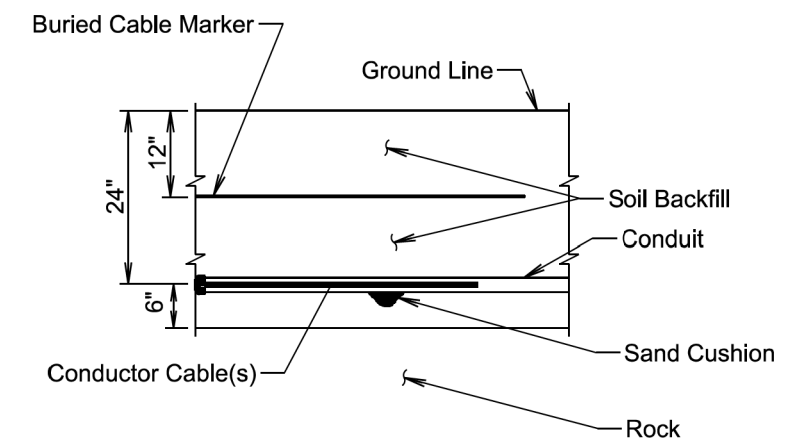
Connectors will be breakaway type.

November 19, 2022

Published Date: 2026	SD DOT	ROADWAY LUMINAIRE POLE FIXED TRANSFORMER BASE	PLATE NUMBER 635.26
			Sheet 1 of 1



SECTION VIEW



SECTION VIEW

GENERAL NOTE:

The Buried Cable Marker will be plastic, approximately 6" wide, and will be capable of sustaining a minimum of a 350% tolerance of elongation without tearing. The Buried Cable Marker will have a life expectancy approximately equal to that of the conductor(s) beneath it. A phrase indicating the presence of a buried electric circuit below will be printed in a contrasting color on the cable marker. The Buried Cable Marker will be subject to approval by the Engineer. All costs associated with furnishing and installing the Buried Cable Marker will be incidental to the contract unit price per foot for the bid item used for the electrical conductor.

November 19, 2022

Published Date: 2026	SD DOT	CONDUIT INSTALLATION	PLATE NUMBER 635.76
			Sheet 1 of 1