

STATE OF SOUTH DAKOTA  
DEPARTMENT OF TRANSPORTATION

STATE OF SOUTH DAKOTA	PROJECT P 0020(252)	SHEET 1	TOTAL SHEETS 11
-----------------------	------------------------	------------	--------------------

Plotting Date: 05/01/2026

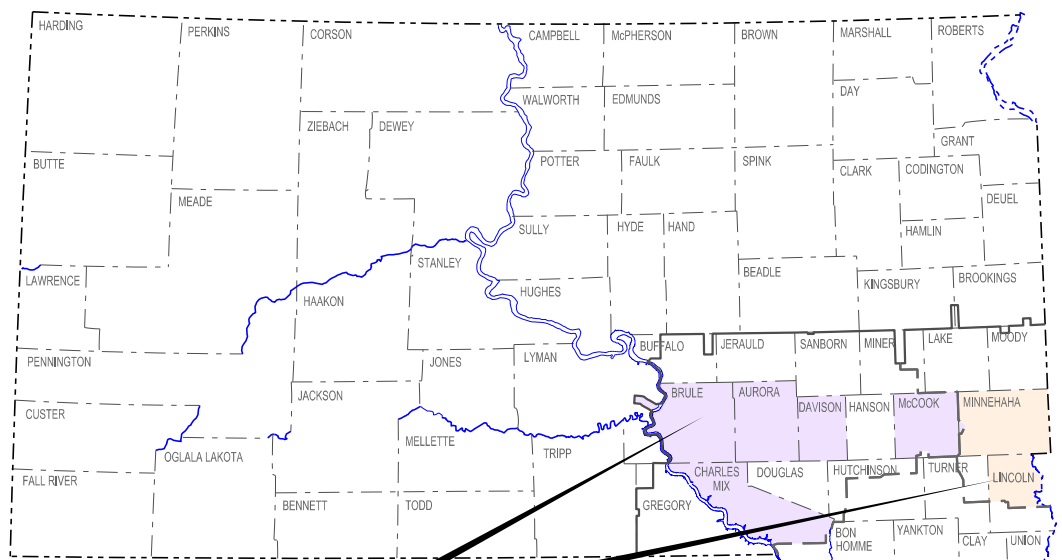
PLANS FOR PROPOSED  
**PROJECT P 0020(252)**  
**MITCHELL REGION**

INTERSTATES 29, 90, 229  
SD HIGHWAYS 34, 37, 50 & 1804  
12TH STREET & 26TH STREET  
AURORA, BRULE, CHARLES MIX, DAVISON, LINCOLN,  
MCCOOK, MINNEHAHA & SANBORN COUNTIES  
CONCRETE PENETRATING SEALER ON BRIDGE DECKS  
PCN 0A5M

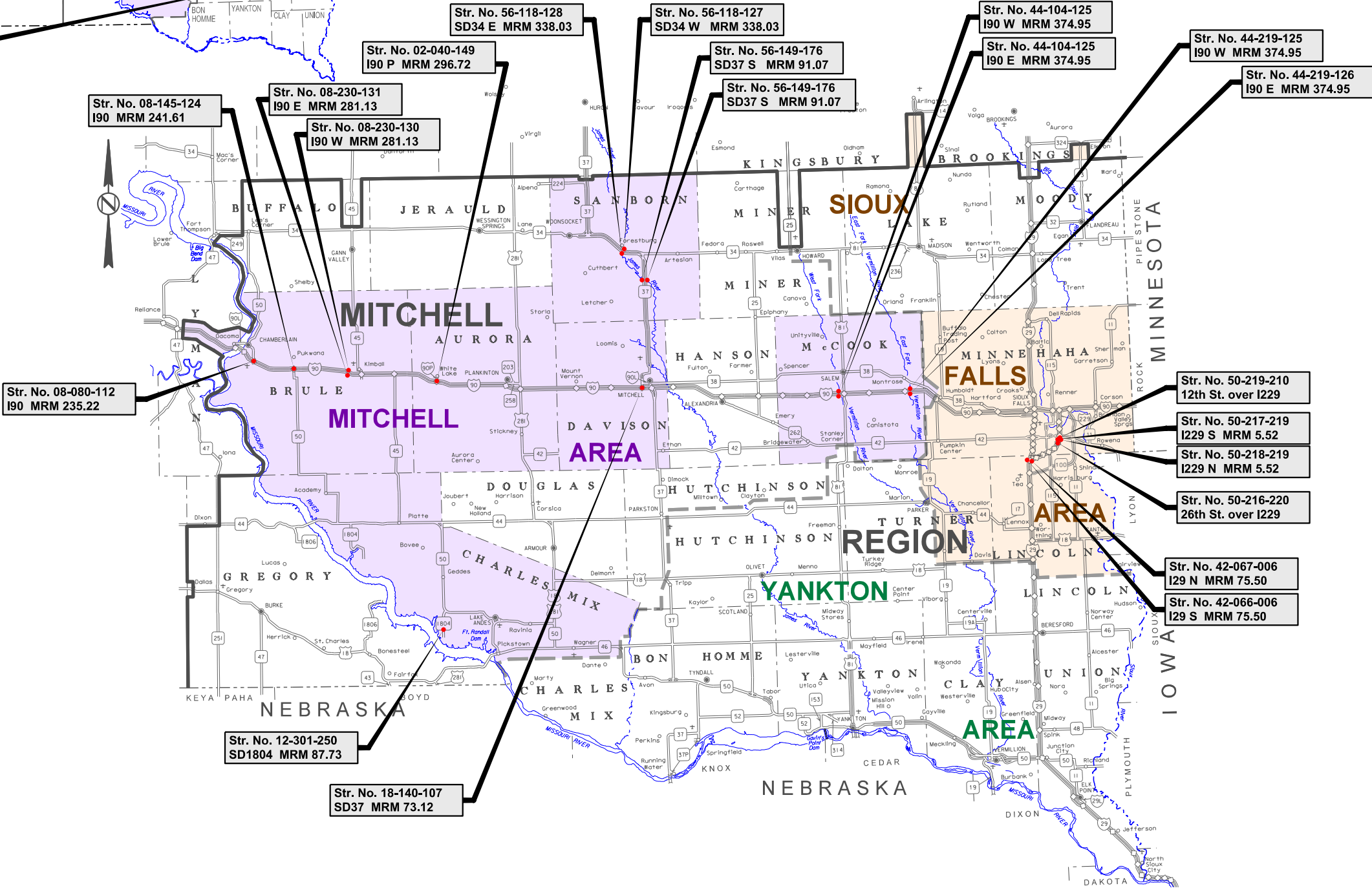
INDEX OF SHEETS

Sheet 1	Layout Map and Index of Sheets
Sheets 2 - 3	Estimate of Quantities & Environmental Commitments
Sheet 4	Plan Notes
Sheets 5-6	Traffic Control
Sheets 7-11	Standard Plates

PLOT SCALE - 1" = 7000'



PROJECT



DESIGN DESIGNATIONS

Str. No.	ADT
02-040-149	256 (2025)
08-080-112	3406 (2025)
08-145-124	259 (2025)
08-230-130	4754 (2025)
08-230-131	4754 (2025)
12-301-250	140 (2025)
18-140-107	9419 (2025)
42-066-006	29295 (2025)
42-067-006	29295 (2025)
44-104-125	6090 (2025)
44-104-126	6090 (2025)
44-219-125	6390 (2025)
44-219-126	6390 (2025)
50-216-220	24000 (2025)
50-217-219	17745 (2025)
50-218-219	17745 (2025)
50-219-210	5000 (2025)
56-118-127	1404 (2025)
56-118-128	1404 (2025)
56-149-176	1283 (2025)
56-150-176	1283 (2025)

**STORM WATER PERMIT**  
(None required)

**3**

June 17, 2026

PLOTTED FROM - TRMLINT16

FILE - ... \PRJ\2026\REG\0A5M\TTL0A5M.DGN

# ESTIMATE OF QUANTITIES & ENVIRONMENTAL COMMITMENTS

STATE OF SOUTH DAKOTA	PROJECT P 0020(252)	SHEET 2	TOTAL SHEETS 11
-----------------------------	------------------------	------------	-----------------------

## ESTIMATE OF QUANTITIES – 0A5M

BID ITEM NUMBER	ITEM	QUANTITY	UNIT
009E0010	Mobilization	Lump Sum	LS
009E4100	Construction Schedule, Category I	Lump Sum	LS
460E0230	Concrete Penetrating Sealer	24,727.0	SqYd
634E0010	Flagging	105.0	Hour
634E0110	Traffic Control Signs	5,029.4	SqFt
634E0120	Traffic Control, Miscellaneous	Lump Sum	LS
634E0275	Type 3 Barricade	15	Each
634E0420	Type C Advance Warning Arrow Board	4	Each
634E1255	Contractor Furnished Vehicle Speed Feedback Sign	9	Each

### ENVIRONMENTAL COMMITMENTS

The SDDOT is committed to protecting the environment and uses Environmental Commitments as a communication tool for the Engineer and Contractor to ensure that attention is given to avoid, minimize, and/or mitigate an environmental impact. Environmental commitments to various agencies and the public have been made to secure approval of this project. An agency with permitting authority can delay a project if identified environmental impacts have not been adequately addressed. Unless otherwise designated, the Contractor's primary contact regarding matters associated with these commitments will be the Project Engineer. During construction, the Project Engineer will verify that the Contractor has met Environmental Commitment requirements. These environmental commitments are not subject to change without prior written approval from the SDDOT Environmental Office.

Additional guidance on SDDOT's Environmental Commitments can be accessed through the Environmental Procedures Manual found at: <https://dot.sd.gov/doing-business/environmental/about-environmental/>

For questions regarding change orders in the field that may have an effect on an Environmental Commitment, the Project Engineer will contact the Environmental Engineer at 605-773-3180 or 605-773-4336 to determine whether an environmental analysis and/or resource agency coordination is necessary.

Once construction is complete, the Project Engineer will review all environmental commitments for the project and document their completion.

### COMMITMENT C: WATER SOURCE

If a Contractor needs access to state waters for extraction, the Contractor must obtain a water right, through the application of a Temporary Permit to Use Public Waters before work begins.

The Contractor will not withdraw water with equipment previously used outside the State of South Dakota or previously used in aquatic invasive species (AIS) positive waters within South Dakota without prior approval from the SDDOT Environmental Office. To prevent and control the introduction and spread of invasive species into the project vicinity, all equipment will be power washed with hot water (≥140 °F) and completely dried for a minimum of 7 days prior to subsequent use. South Dakota administrative rule 41:10:04:02 forbids the possession and transport of AIS; therefore, all attached dirt, mud, debris and vegetation must be removed and all compartments and tanks capable of holding standing water must be drained. This includes, but is not limited to, all equipment, pumps, lines, hoses and holding tanks.

The Contractor will not withdraw water directly from streams of the James, Big Sioux, and Vermillion watersheds without prior approval from the SDDOT Environmental Office.

#### Action Taken/Required:

The Contractor will obtain the necessary permits from the regulatory agencies such as the South Dakota Department of Agriculture and Natural Resources (SDDANR) and the United States Army Corps of Engineers (USACE) prior to water extraction activities.

Temporary permit to use public waters for highway construction purposes application can be found on the SDDANR website:

<https://danr.sd.gov/OfficeOfWater/WaterRights/PermitForms/default.aspx>

Additional information and mapping of water sources impacted by Aquatic Invasive Species in South Dakota can be accessed at:

< <https://sdleastwanted.sd.gov/maps/default.aspx> >

South Dakota Administrative Rule 41:10:04 Aquatic Invasive Species:

< <https://sdlegislature.gov/rules/DisplayRule.aspx?Rule=41:10:04> >

### COMMITMENT H: WASTE DISPOSAL SITE

Rev. 5/6/26 pm

The Contractor will furnish a site(s) for the disposal of construction and/or demolition debris generated by this project.

#### Action Taken/Required:

Construction and/or demolition debris may not be disposed of within the Public ROW.

The waste disposal site(s) will be managed and reclaimed in accordance with the following from the General Permit for Construction/Demolition Debris Disposal Under the South Dakota Waste Management Program issued by the Department of Agriculture and Natural Resources.

The waste disposal site(s) will not be located in a wetland, within 200 feet of surface water, or in an area that adversely affects wildlife, recreation, aesthetic value of an area, or any threatened or endangered species, as approved by the Environmental Office and the Project Engineer.

If the waste disposal site(s) is located such that it is within view of any ROW, the following additional requirements will apply:

1. Construction and/or demolition debris consisting of concrete, asphalt concrete, or other similar materials will be buried in a trench separate from wood debris. The final cover over the construction and/or demolition debris will consist of a minimum of 1 foot of soil capable of supporting vegetation. Waste disposal sites provided outside of the Public ROW will be seeded in accordance with Natural Resources Conservation Service recommendations. The seeding recommendations may be obtained through the appropriate County NRCS Office. The Contractor will control the access to waste disposal sites not within the Public ROW with fences, gates, and placement of a sign or signs at the entrance to the site stating, "No Dumping Allowed".
2. Concrete and asphalt concrete debris may be stockpiled within view of the ROW for a period not to exceed the duration of the project. Prior to project completion, the waste will be removed from view of the ROW or buried, and the waste disposal site reclaimed as noted above.

The above requirements will not apply to waste disposal sites that are covered by an individual solid waste permit as specified in SDCL 34A-6-58, SDCL 34A-6-1.13, and ARSD 74:27:10:06.

Failure to comply with the requirements stated above may result in civil penalties in accordance with South Dakota Solid Waste Law, SDCL 34A-6-1.31.

All costs associated with furnishing waste disposal site(s), disposing of waste, maintaining control of access (fence, gates, and signs), and reclamation of the waste disposal site(s) will be incidental to the various contract items.

# ESTIMATE OF QUANTITIES & ENVIRONMENTAL COMMITMENTS

STATE OF SOUTH DAKOTA	PROJECT	SHEET	TOTAL SHEETS
	P 0020(252)	3	11

## COMMITMENT I: HISTORIC PRESERVATION OFFICE CLEARANCES

State Historic Preservation Office (SHPO or THPO) concurrence has not been obtained for this project.

### Action Taken/Required:

All earth disturbing activities not designated within the plans require a cultural resource review prior to scheduling the pre-construction meeting. This work includes but is not limited to: Contractor furnished material sources, material processing sites, stockpile sites, storage areas, plant sites, and waste areas.

The Contractor will arrange and pay for a record search and when necessary, a cultural resource survey. The Contractor has the option to contact the state Archaeological Research Center (ARC) at 605-394-1936 or another qualified archaeologist, to obtain either a records search or a cultural resources survey. A record search might be sufficient for review if the site was previously surveyed; however, a cultural resources survey may need to be conducted by a qualified archaeologist.

The Contractor will provide ARC with the following: a topographical map or aerial view in which the site is clearly outlined, site dimensions, project number, and PCN. If applicable, provide evidence that the site has been previously disturbed by farming, mining, or construction activities with a landowner statement that artifacts have not been found on the site.

The Contractor will submit the cultural resources survey report to SDDOT Environmental Office, 700 East Broadway Avenue, Pierre, SD 57501-2586. SDDOT will submit the information to the appropriate SHPO/THPO. Allow **30 Days** from the date this information is submitted to the Environmental Engineer for SHPO/THPO review.

In the event of an inadvertent discovery of human remains, funerary objects, or if evidence of cultural resources is identified during project construction activities, then such activities within 150 feet of the inadvertent discovery will immediately cease and the Project Engineer will be immediately notified. The Project Engineer will contact the SDDOT Environmental Office, who will contact the appropriate SHPO/THPO within 48 hours of the discovery to determine an appropriate course of action.

The Contractor is responsible for obtaining any additional permits and clearances for Contractor furnished material sources, material processing sites, stockpile sites, storage areas, plant sites, and waste areas that affect wetlands, threatened and endangered species, or waterways. The Contractor will not utilize a site known or suspected of having contaminated soil or water. The Contractor will provide the required permits and clearances to the Project Engineer at the preconstruction meeting.

**CONCRETE PENETRATING SEALER**

1. This work consists of cleaning the bridge deck surface, furnishing and applying concrete penetrating sealer to the surface. Sidewalks are not included to be sealed but the quantities do include the raised median pavements.
2. The sealers will be per the manufacturers recommendations from the Department's Approved Products List for Concrete Penetrating Sealer. The Contractor will furnish the Engineer the manufacturer's technical data sheets, materials safety data sheet (MSDS), and sufficient evidence that the material to be used has not exceeded the manufacturer's specified shelf life. This documentation will be furnished to the Engineer a minimum of 5 days prior to application of the sealer.
3. Concrete surfaces will be cleaned such that all traces of laitance, dirt, dust, salt, and foreign materials, and deleterious substances are removed. Power washing may be necessary as determined by the Engineer. Oil, grease, or other contaminants on the concrete surface will require removal with detergent cleaning and abrasive blast on the affected areas. If necessary, solvents and hand tools will be used to remove bonded materials detrimental to the treatment of the concrete surface. The cleaning process will not cause undue damage to the concrete surface, remove or alter the existing surface finish, or expose the coarse aggregate of the concrete. The method of cleaning will be performed in such a manner as to provide a reasonably uniform appearing surface color and texture. Surface preparation will be at a minimum as listed above, additional preparation maybe be required by the Manufacturer. Other methods and equipment for surface preparation may be used if prior approval is obtained from the Engineer.
4. Once the deck surface has been cleaned, the deck will be protected from contamination from traffic and construction operations. The concrete surfaces will be allowed to dry for a minimum of 3 days after power washing or precipitation. The Engineer will determine when the surface is sufficiently dry.
5. The sealer may be harmful to materials such as rubber, asphalt, and joint compounds; therefore, the Contractor will be required to mask off all joints, strip seals, etc. prior to applying the sealer. The Engineer will approve the prepared surface prior to application of the penetrating sealer.
6. The Contractor will have enough sealer on the project prior to the start of application such that the Manufacturer's maximum rate of coverage (minimum ft<sup>2</sup> /gal) can be attained. Sealer application will conform to the Manufacturer's recommendations and the following:
  - a. The penetrating sealer will only be applied when the ambient air and concrete surface temperatures are between 40 °F and 100 °F unless otherwise recommended by the Manufacturer.
  - b. The treatment solution will not be sprayed when blowing winds or other conditions prevent proper application. The sealer will not be applied during inclement weather or rain, or if inclement weather or rain is anticipated within 24 hours.
  - c. Spray equipment for the application of the treatment solution will be a low-pressure airless sprayer with a maximum application pressure of 15 psi.

- d. All loose dust and debris will be blown off of the concrete surface with compressed air immediately prior to application of the sealer.
  - e. The sealer will be used as supplied by the manufacturer and will not be diluted or altered in any way. The solution will be sprayed on to the concrete surfaces at the manufacturer's recommended maximum rate of coverage (minimum ft<sup>2</sup>/gal) or to refusal, whichever is achieved first. Refusal is defined such that additional spray applications remain on the concrete surface and do not soak in, as determined by the Engineer.
  - f. Traffic will not be permitted on treated surfaces until the solution has completely penetrated, and the treated surface is dry. The Engineer will determine when the treated surface is sufficiently dry.
7. Concrete Penetrating Sealer will be measured to the nearest 0.1 square yard.
  8. Concrete Penetrating Sealer will be paid for at the contract unit price per square yard. Payment will be full compensation for equipment, labor, materials, concrete surface preparation and cleaning, and all other incidental items required to furnish and apply the Concrete Penetrating Sealer.

**BRIDGE INFORMATION**

Highway Carried	Structure No.	MRM	Concrete Penetrating Sealer			General Comments
			Width Ft	Length Ft	Area SqYds	
I-90 P	02-040-149	296.72	32.0	252.34	897.2	
SD50	08-080-112	235.22	40.0	268.31	1192.5	
SD50	08-145-124	241.61	32.0	252.33	897.2	
I-90 W	08-230-130	281.13	40.0	173.05	769.1	
I-90 E	08-230-131	281.13	40.0	173.05	769.1	
SD1804	12-301-250	87.73	32.0	106.00	376.9	
SD37	18-140-107	73.12	48.0	252.00	1344.0	
I-29 S	42-066-006	75.50	56.0	303.98	1891.4	
I-29 N	42-067-006	75.50	44.0	316.48	1547.2	
I-90 W	44-104-125	363.48	40.0	254.25	1130.0	
I-90 E	44-104-126	363.48	40.0	254.25	1130.0	
I-90 W	44-219-125	374.95	40.0	302.00	1342.2	
I-90 E	44-219-126	374.95	40.0	302.00	1342.2	
26th St	50-216-220	NA	19.0	322.40	680.6	<b>Raised Median Only</b>
I-229 S	50-217-219	5.52	40.0	325.50	1446.7	
I-229 N	50-218-219	5.52	40.0	325.50	1446.7	
12th St	50-219-210	NA	52.0	126.00	728.0	
SD34 W	56-118-127	338.03	36.0	332.10	1328.4	
SD34 E	56-118-128	338.03	36.0	332.10	1328.4	
SD37 S	56-149-176	91.07	40.0	353.17	1569.6	
SD37 N	56-150-176	91.07	40.0	353.17	1569.6	
<b>Total:</b>					<b>24727.0</b>	

STATE OF SOUTH DAKOTA	PROJECT	SHEET	TOTAL SHEETS
	P 0020(252)	5	11

REVISED 05/06/26 GB

### **SEQUENCE OF OPERATIONS**

The Contractor will submit a sequence of operations for approval two weeks prior to the preconstruction meeting. If changes to the sequence of operations are proposed during the project, these must be submitted for review a minimum of one week prior to potential implementation. Approval for changes to the sequence of operations will only be allowed when the proposed changes meet with the Department's intent for traffic control and sequencing of the work.

### **GENERAL TRAFFIC CONTROL**

Existing guide, route, informational logo, regulatory, and warning signs will be temporarily reset and maintained during construction. Removing, relocating, covering, salvaging, and resetting of existing traffic control devices, including delineation, will be the responsibility of the Contractor. Cost for this work will be incidental to the contract unit prices for the various items unless otherwise specified in the plans. Any delineators and signs damaged or lost will be replaced by the Contractor at no cost to the State.

All temporary traffic control sign locations will be set in the field by the Contractor and verified by the Engineer prior to installation.

All temporary speed limit signs will have a minimum mounting height of 5 feet in rural locations, even when mounted on portable supports.

Portable sign supports will not be located on sidewalks, bicycle facilities, or other areas designated for pedestrian or bicycle traffic.

If there is a discrepancy between the traffic control plans, standard plates, and the MUTCD, whichever is more stringent will be used, as determined by the Engineer.

Unless otherwise stated in these plans, work will not be allowed during hours of darkness.

Fixed location signing placed more than 4 calendar days prior to the start of construction will be covered or laid down until the time of construction. The covers must be approved by the Engineer prior to installation. The cost of materials, labor, and equipment necessary to complete this work will be incidental to other contract items. No separate payment will be made.

All fixed location signs, sign posts, and breakaway bases will be removed within 7 calendar days following pavement marking.

Project Engineer to determine if press releases will be required to inform the traveling public of the work being completed in high traffic volume areas.

The Contractor will only be allowed to utilize lane closures in Sioux Falls on the interstates I29, I229, and 26<sup>th</sup> St during non-peak hours unless otherwise approved by the Engineer. Peak hours will be from 6:30 AM to 9:00 AM and from 3:30 PM to 6:00 PM.

### **TRAFFIC CONTROL SIGNS**

Traffic control signs have been included in a table for each site. Payment will only be for those signs used on each site.

### **FLAGGING**

Operations will be conducted so that the traveling public will not have to wait longer than 15 minutes at the flagger station.

It is required that the flaggers be able to communicate with one another. If an emergency vehicle needs to pass through the project, the Contractor will be required to expedite traffic movement. All costs associated with this will be incidental to the contract unit price per hour for "Flagging".

### **PERMANENT PAVEMENT MARKING**

The Contractor will be required to repaint all existing pavement markings including centerline, edge line, and lane lines only if the markings are damaged by the Contractor's materials, means, and methods. The Contractor will be required to document and be able to relocate for replacement of the existing markings before the markings are obliterated. The cost to duplicate the existing marking locations will be incidental to the contract unit prices for the various contract items.

Structure Nos 02-040-149, 08-080-112, 08-145-124, 12-301-250, 50-219-210, 56-118-127, 56-118-128, 56-149-176 & 56-150-176

**ITEMIZED LIST FOR TRAFFIC CONTROL SIGNS**

SIGN CODE	SIGN DESCRIPTION	CONVENTIONAL ROAD			
		NUMBER	SIGN SIZE	SQFT PER SIGN	SQFT
W20-1	ROAD WORK AHEAD	2	48" x 48"	16.0	32.0
W20-4	ONE LANE ROAD AHEAD	2	48" x 48"	16.0	32.0
W20-7	FLAGGER (symbol)	2	48" x 48"	16.0	32.0
G20-2	END ROAD WORK	2	36" x 18"	4.5	9.0
<b>CONVENTIONAL ROAD TRAFFIC CONTROL SIGNS SQFT</b>					<b>105.0</b>

Structure No 18-140-107

**ITEMIZED LIST FOR TRAFFIC CONTROL SIGNS**

SIGN CODE	SIGN DESCRIPTION	CONVENTIONAL ROAD			
		NUMBER	SIGN SIZE	SQFT PER SIGN	SQFT
R1-1	STOP	1	30"	5.2	5.2
R3-2	LEFT TURN PROHIBITION (symbol)	1	24" x 24"	4.0	4.0
W1-3	REVERSE TURN (L or R)	3	48" x 48"	16.0	48.0
W9-3	CENTER LANE CLOSED AHEAD	3	48" x 48"	16.0	48.0
W13-1P	ADVISORY SPEED (plaque)	2	30" x 30"	6.3	12.6
W20-1	ROAD WORK AHEAD	3	48" x 48"	16.0	48.0
W20-5	LEFT, RIGHT OR CENTER LANE CLOSED AHEAD	3	48" x 48"	16.0	48.0
G20-2	END ROAD WORK	2	36" x 18"	4.5	9.0
<b>CONVENTIONAL ROAD TRAFFIC CONTROL SIGNS SQFT</b>					<b>222.8</b>

Structure No 50-216-220

**ITEMIZED LIST FOR TRAFFIC CONTROL SIGNS**

SIGN CODE	SIGN DESCRIPTION	CONVENTIONAL ROAD			
		NUMBER	SIGN SIZE	SQFT PER SIGN	SQFT
W9-3	CENTER LANE CLOSED AHEAD	2	48" x 48"	16.0	32.0
W20-1	ROAD WORK AHEAD	2	48" x 48"	16.0	32.0
W20-5	LEFT, RIGHT OR CENTER LANE CLOSED AHEAD	2	48" x 48"	16.0	32.0
G20-2	END ROAD WORK	2	36" x 18"	4.5	9.0
<b>CONVENTIONAL ROAD TRAFFIC CONTROL SIGNS SQFT</b>					<b>105.0</b>

Structure Nos 08-230-130, 08-230-131, 42-067-006, 44-104-125, 44-104-126, 44-219-125, 44-219-126, 50-217-219 & 50-218-219

**ITEMIZED LIST FOR TRAFFIC CONTROL SIGNS**

SIGN CODE	SIGN DESCRIPTION	EXPRESSWAY / INTERSTATE			
		NUMBER	SIGN SIZE	SQFT PER SIGN	SQFT
R2-1	SPEED LIMIT 45	2	36" x 48"	12.0	24.0
R2-1	SPEED LIMIT 65	4	36" x 48"	12.0	48.0
R2-1	SPEED LIMIT 80	1	36" x 48"	12.0	12.0
R2-6aP	FINES DOUBLE (plaque)	2	36" x 24"	6.0	12.0
W3-5	SPEED REDUCTION AHEAD (45 MPH)	2	48" x 48"	16.0	32.0
W3-5	SPEED REDUCTION AHEAD (65 MPH)	4	48" x 48"	16.0	64.0
W4-2	LEFT or RIGHT LANE ENDS (symbol)	4	48" x 48"	16.0	64.0
W20-1	ROAD WORK AHEAD	4	48" x 48"	16.0	64.0
W20-5	LEFT or RIGHT LANE CLOSED AHEAD	4	48" x 48"	16.0	64.0
G20-2	END ROAD WORK	2	48" x 24"	8.0	16.0
<b>EXPRESSWAY / INTERSTATE TRAFFIC CONTROL SIGNS SQFT</b>					<b>400.0</b>

Structure No 42-066-006

**ITEMIZED LIST FOR TRAFFIC CONTROL SIGNS**

SIGN CODE	SIGN DESCRIPTION	EXPRESSWAY / INTERSTATE			
		NUMBER	SIGN SIZE	SQFT PER SIGN	SQFT
W4-2	LEFT or RIGHT LANE ENDS (symbol)	4	48" x 48"	16.0	64.0
W13-1P	ADVISORY SPEED (plaque)	2	30" x 30"	6.3	12.6
W20-1	ROAD WORK 1 MILE	2	48" x 48"	16.0	32.0
W20-5a	2 RIGHT LANES CLOSED 1/2 MILE	2	48" x 48"	16.0	32.0
G20-2	END ROAD WORK	2	48" x 24"	8.0	16.0
<b>EXPRESSWAY / INTERSTATE TRAFFIC CONTROL SIGNS SQFT</b>					<b>156.6</b>

Posted Speed Prior to Work (M.P.H.)	Spacing of Advance Warning Signs (Feet) (A)	Spacing of Channelizing Devices (Feet) (G)
0 - 30	200	25
35 - 40	350	25
45	500	25
50	500	50
55	750	50
60 - 65	1000	50

- Flagger
- Channelizing Device

For low-volume traffic situations with short work zones on straight roadways where the flagger is visible to road users approaching from both directions, a single flagger may be used.

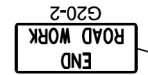
The ROAD WORK AHEAD and the END ROAD WORK signs may be omitted for short duration operations (1 hour or less).

For tack and/or flush seal operations, when flaggers are not being used, the FRESH OIL sign (W21-2) will be displayed in advance of the liquid asphalt areas.

Flashing warning lights and/or flags may be used to call attention to the advance warning signs.

The channelizing devices will be drums or 42" cones.

Channelizing devices are not required along the centerline adjacent to work area when pilot cars are utilized for escorting traffic through the work area.

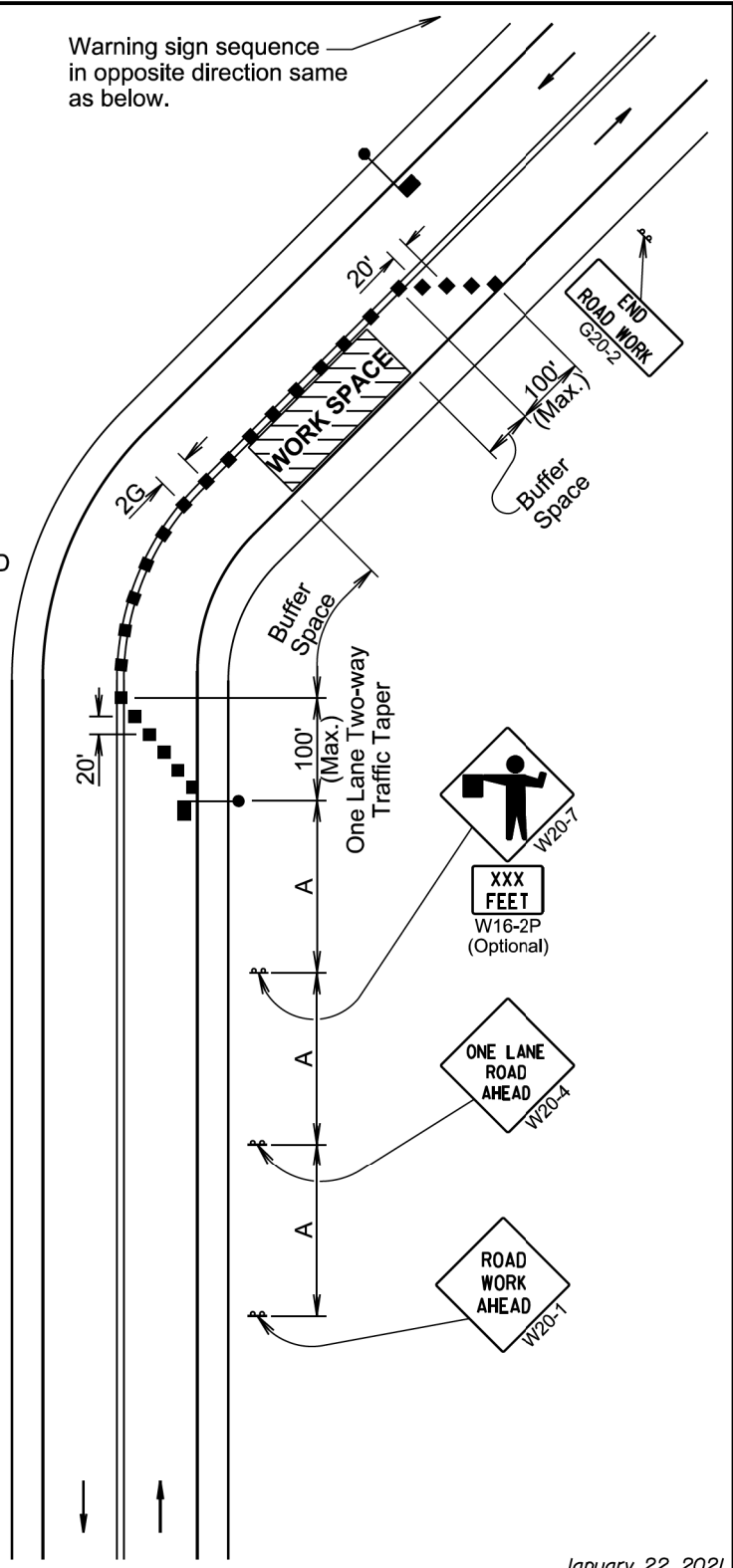


Channelizing devices and flaggers will be used at intersecting roads to control intersecting road traffic as required.

The buffer space should be extended so that the two-way traffic taper is placed before a horizontal or vertical curve to provide adequate sight distance for the flagger and queue of stopped vehicles.

The length of A may be adjusted to fit field conditions.

Warning sign sequence in opposite direction same as below.

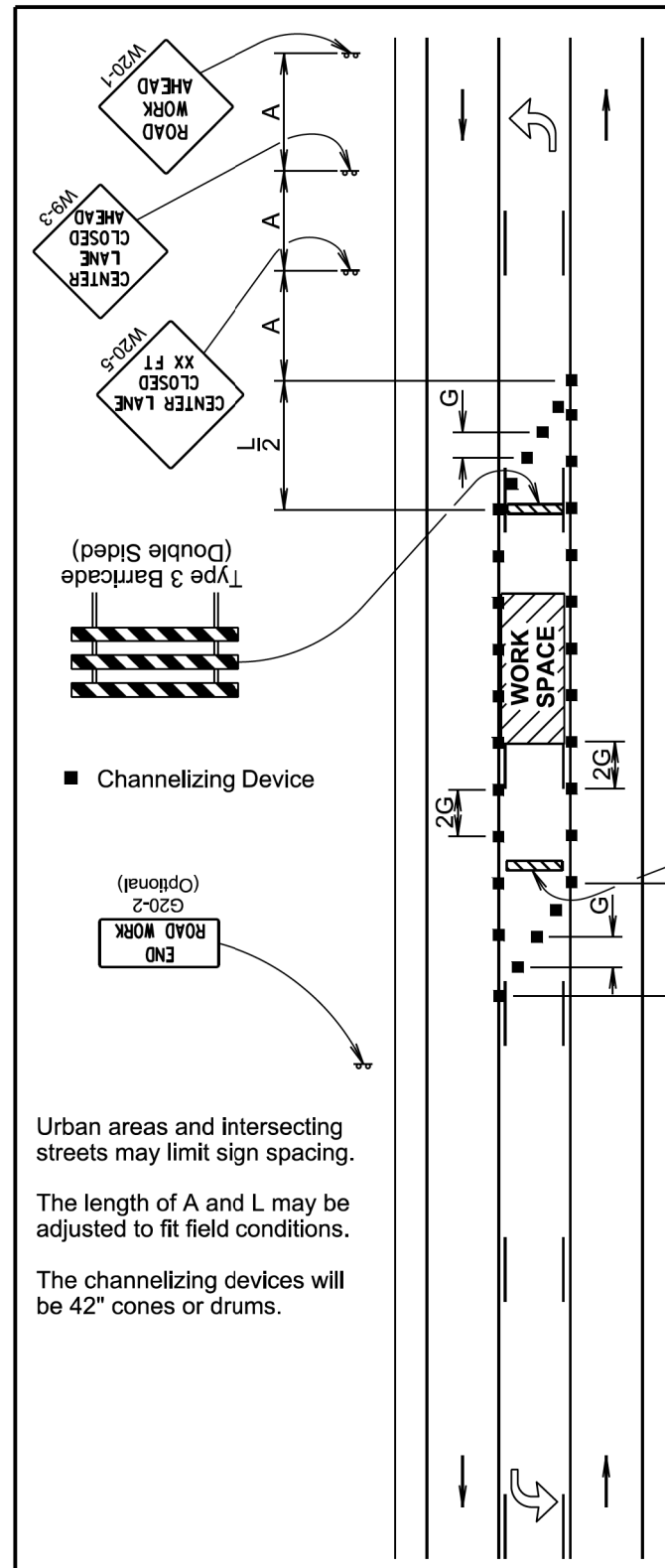


January 22, 2021

<b>S D D O T</b>	<b>LANE CLOSURE WITH FLAGGER PROVIDED</b>	PLATE NUMBER <b>634.23</b>
		Sheet 1 of 1

Published Date: 2026

Posted Speed Prior to Work (M.P.H.)	Spacing of Advance Warning Signs (Feet) (A)	Taper Length (Feet) (L)	Spacing of Channelizing Devices (Feet) (G)
0 - 30	200	180	25
35 - 40	350	320	25
45	500	600	25
50	500	600	50
55	750	660	50
60 - 65	1000	780	50



Urban areas and intersecting streets may limit sign spacing.

The length of A and L may be adjusted to fit field conditions.

The channelizing devices will be 42" cones or drums.

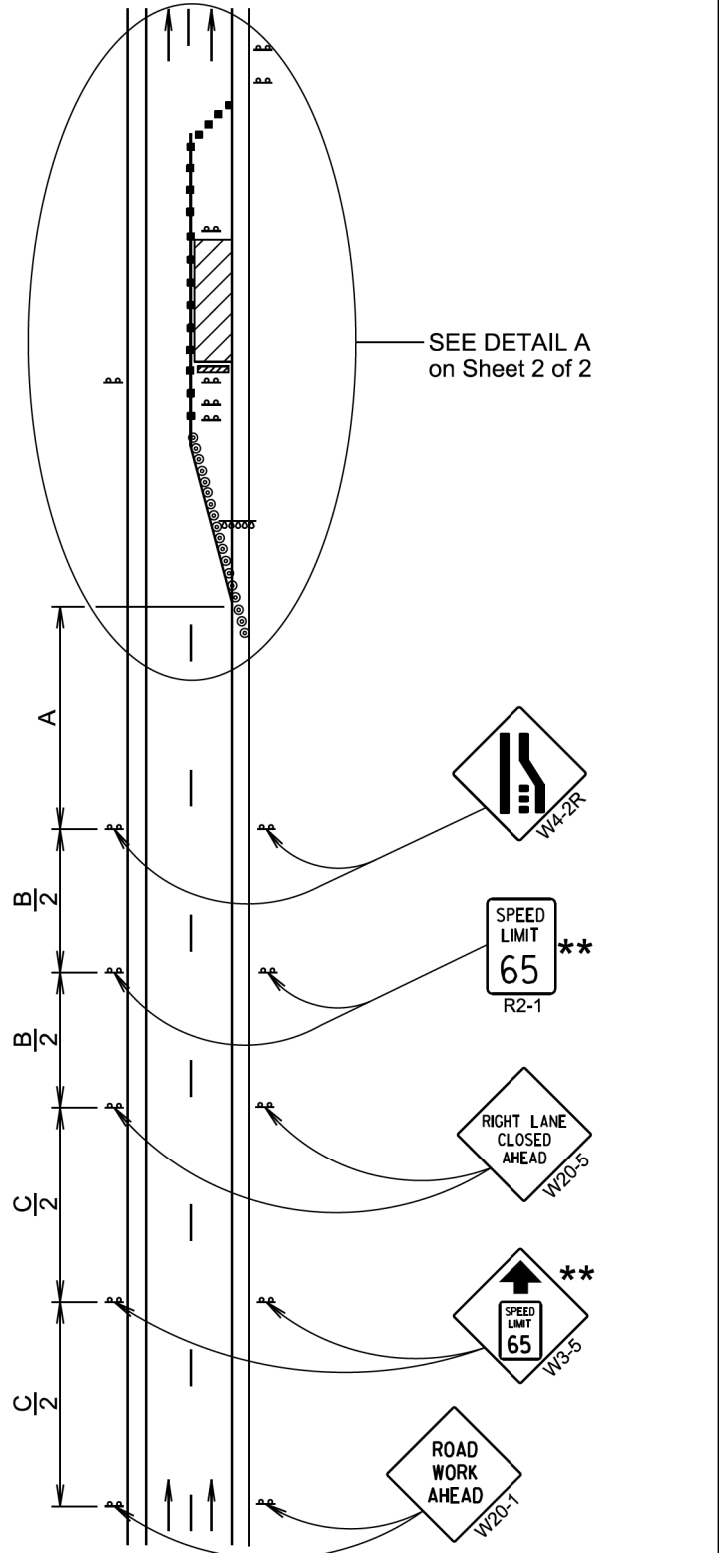
January 22, 2021

<b>S D D O T</b>	<b>3-LANE, CENTER LANE CLOSED</b>	PLATE NUMBER <b>634.52</b>
		Sheet 1 of 1

Published Date: 2026



Posted Speed Prior to Work (M.P.H.)	Spacing of Advance Warning Signs (Feet)		
	(A)	(B)	(C)
0 - 30	200		
35 - 40	350		
45 - 50	500		
55	750		
60 - 65	1000		
70 - 80	1000	1500	2640



\*\* Speed appropriate for location.

- ⊙ Reflectorized Drum
- Channelizing Device

ROAD WORK AHEAD sign is only required in advance of the first lane closure.

High speed is defined as having a posted speed limit greater than 45 mph.

April 8, 2025

S  
D  
D  
O  
T

**WORK ZONE SPEED REDUCTION FOR INTERSTATE AND HIGH SPEED MULTI-LANE HIGHWAYS**

PLATE NUMBER  
634.63

Sheet 1 of 2

Published Date: 2026

Posted Speed Prior to Work (M.P.H.)	Spacing of Channelizing Devices (Feet) (G)	Taper Length (Feet) (L)
0 - 30	25	180
35 - 40	25	320
45	25	600
50	50 *	600
55	50 *	660
60 - 65	50 *	780
70 - 80	50 *	960

\* Spacing is 40' for 42" cones.

\*\* Speed appropriate for location.

\*\*\* Use speed limit designated for the condition when workers are present in the work space. Signs will be covered or removed when workers are not present.

⊙ Reflectorized Drum

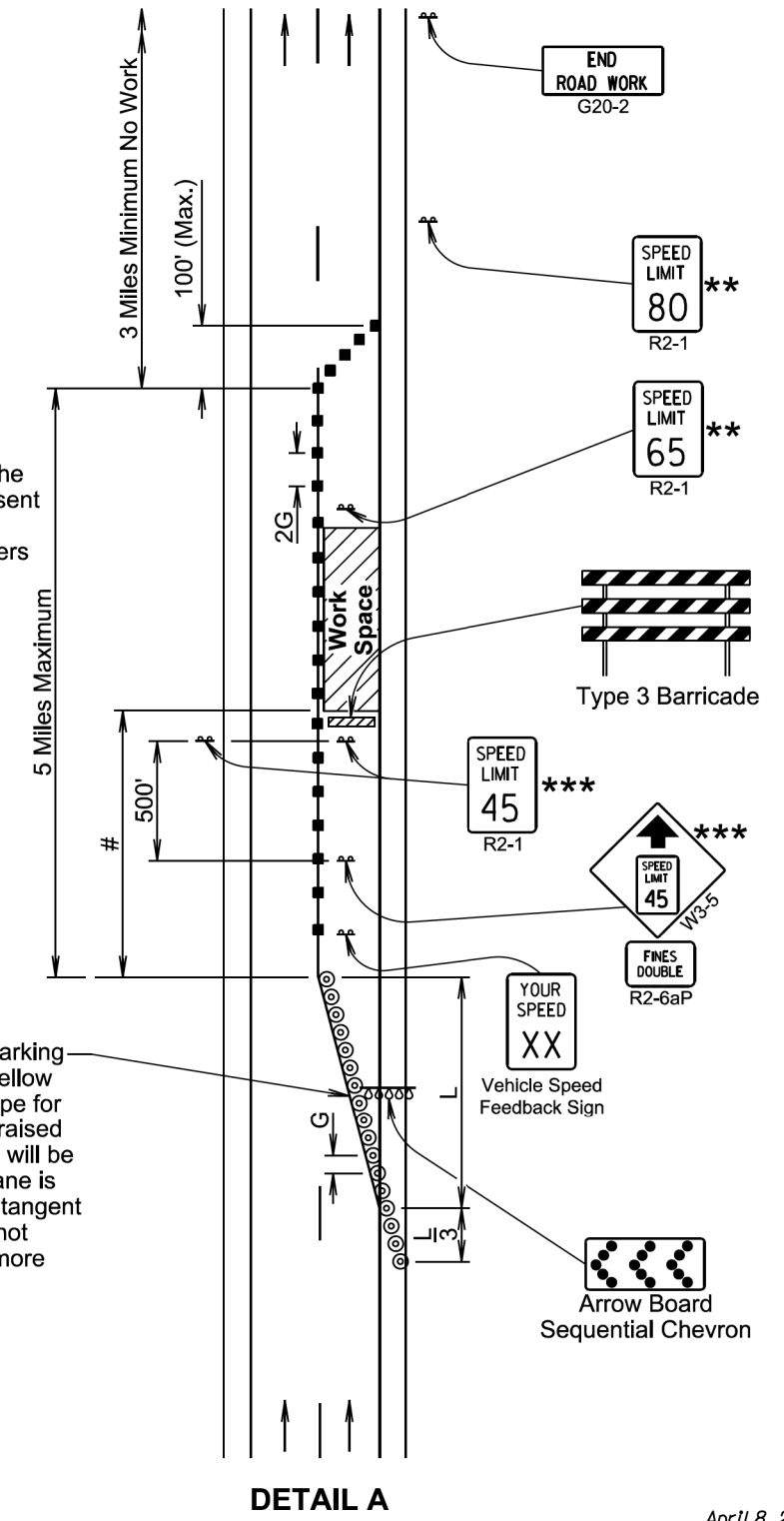
■ Channelizing Device

# The Work Space will be a minimum of 500' from the end of the taper.

The channelizing devices will be 42" cones or drums.

42" cones may be used in place of the drums shown in the taper if setup will not be used during night time hours.

4" white temporary pavement marking tape for right lane closures, 4" yellow temporary pavement marking tape for left lane closures, or temporary raised pavement markers at 5' spacing will be installed in the taper when the lane is closed overnight, and along the tangent section where the skip lines do not exist and the lane is closed for more than 3 days.



DETAIL A

April 8, 2025

S  
D  
D  
O  
T

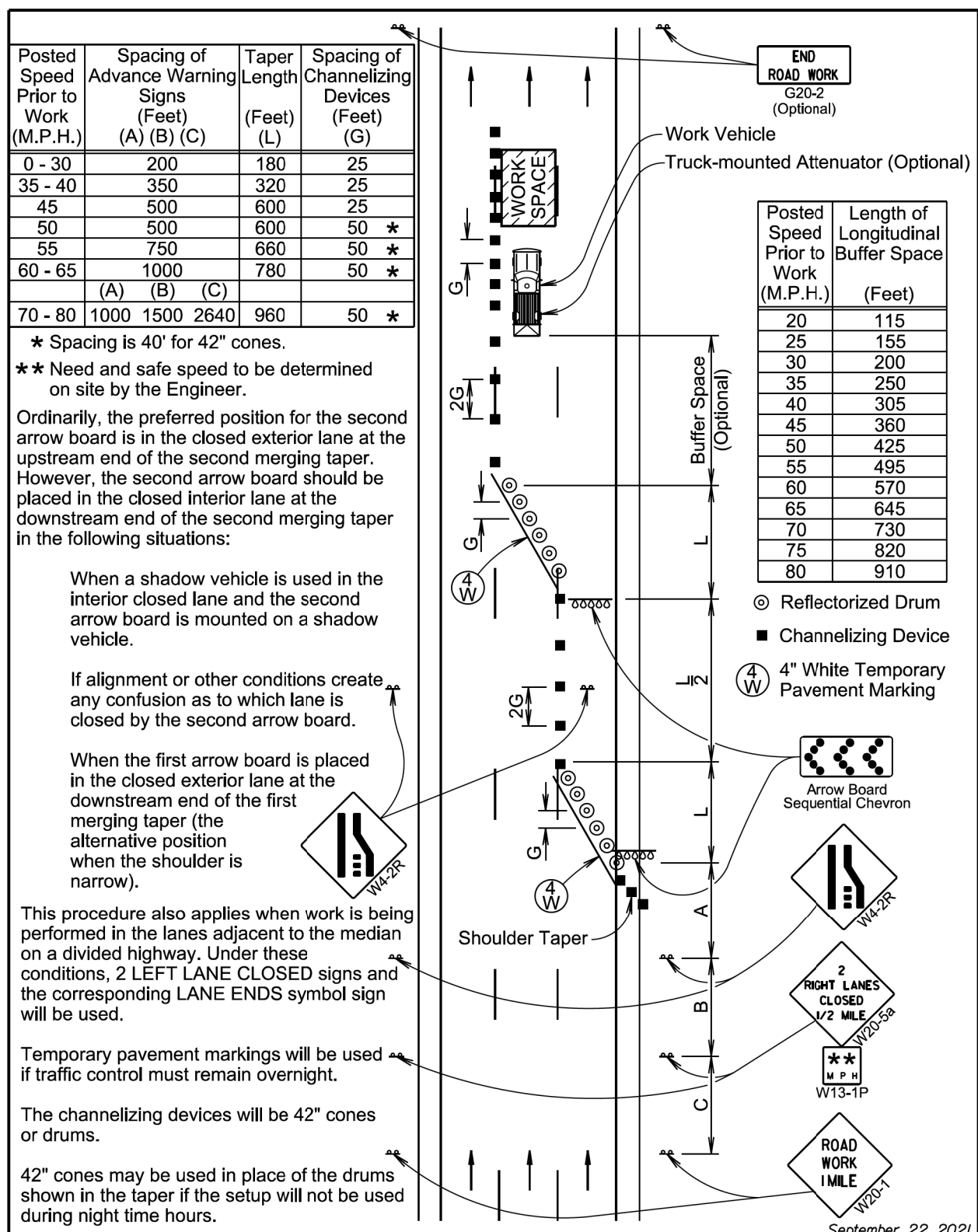
**WORK ZONE SPEED REDUCTION FOR INTERSTATE AND HIGH SPEED MULTI-LANE HIGHWAYS**

PLATE NUMBER  
634.63

Sheet 2 of 2

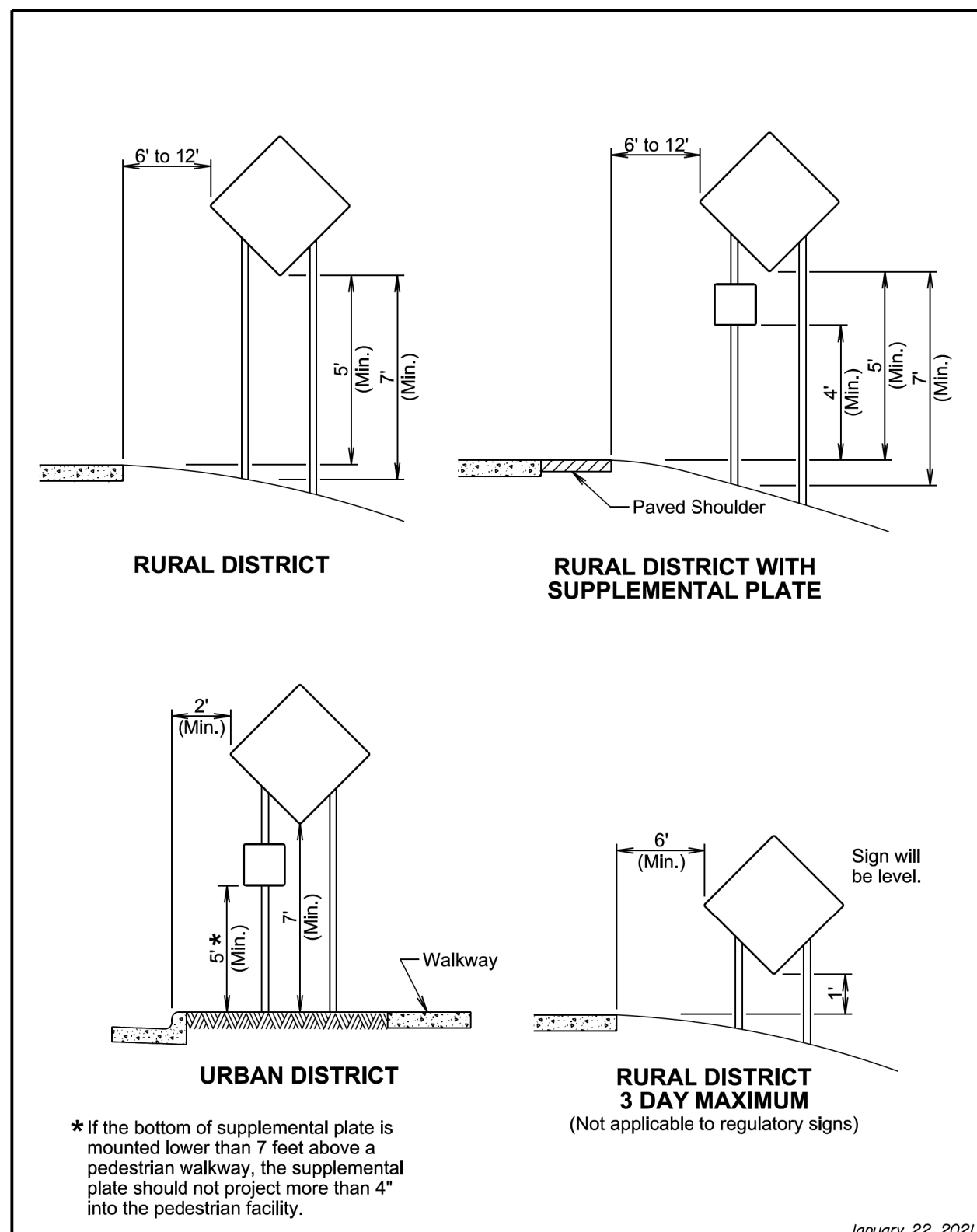
Published Date: 2026

PLOT SCALE - 1:200



<b>S D D O T</b>	<b>DOUBLE LANE CLOSURE</b>	PLATE NUMBER <b>634.80</b>
	Published Date: 2026	Sheet 1 of 1

September 22, 2021



<b>S D D O T</b>	<b>CRASHWORTHY SIGN SUPPORTS (Typical Construction Signing)</b>	PLATE NUMBER <b>634.85</b>
	Published Date: 2026	Sheet 1 of 1

January 22, 2021

PLOTTED FROM - TRM111119

PLOT NAME - 4

FILE - ... \REG\045M\TC\STANDARDPLATES.DGN

