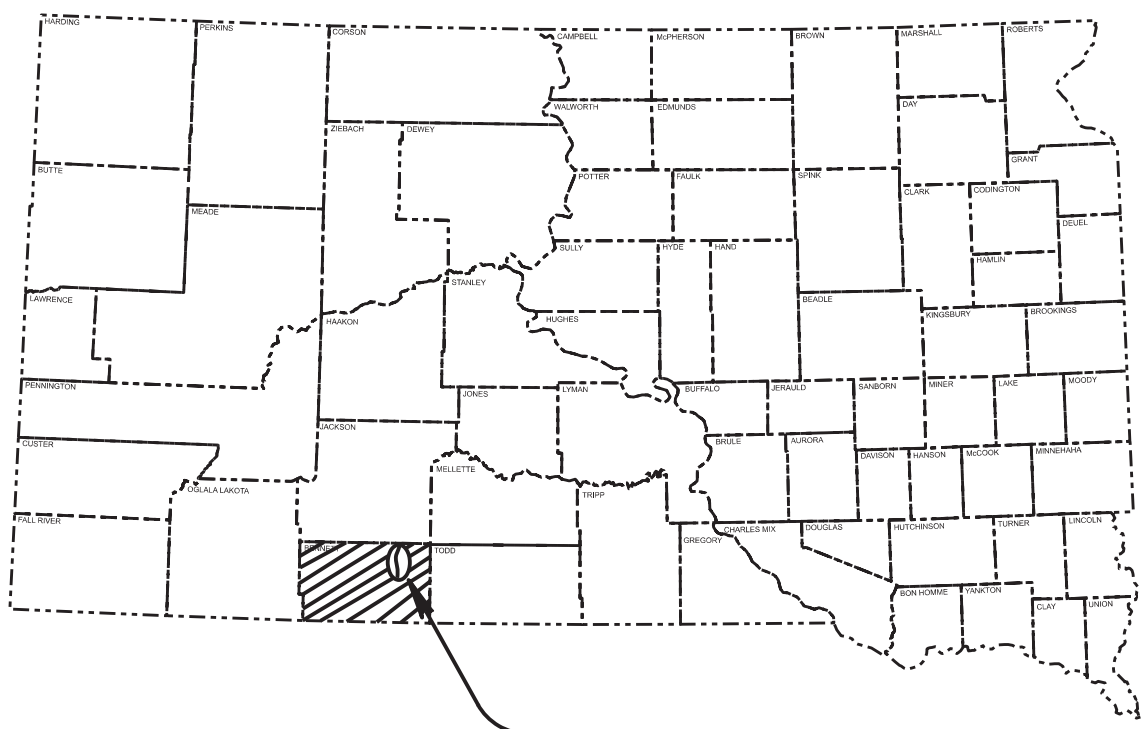


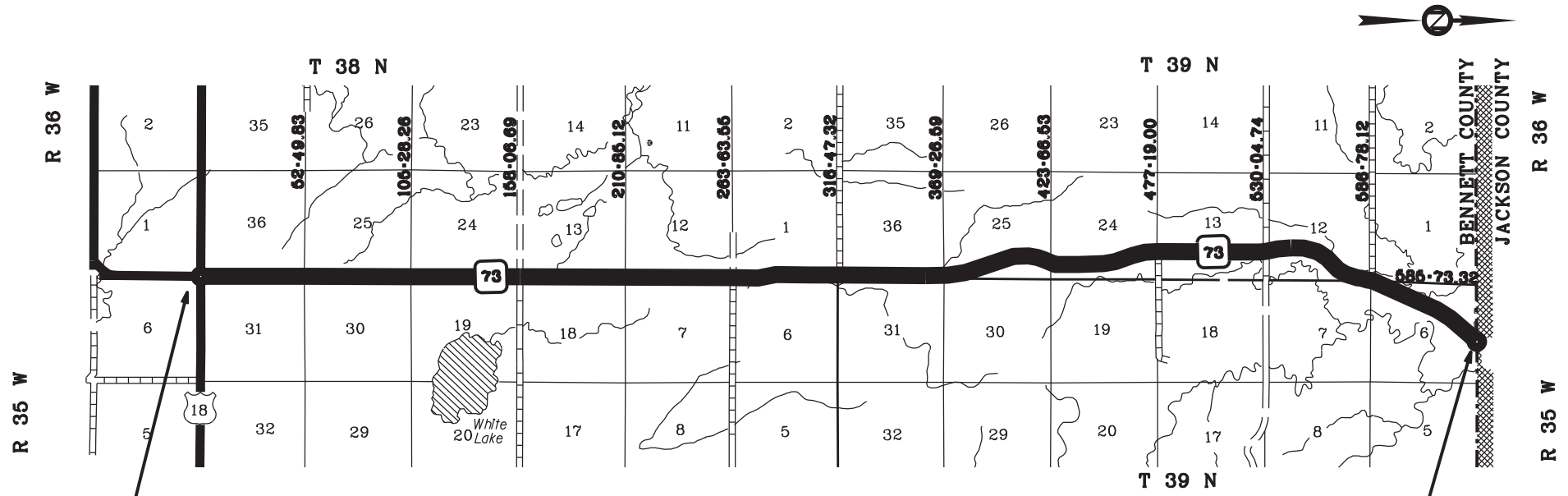
STATE OF SOUTH DAKOTA
DEPARTMENT OF TRANSPORTATION
PLANS FOR PROPOSED
PROJECT NH 0033(50)
SD HIGHWAY 73
BENNETT COUNTY
Crack Leveling
PCN 0AA9

INDEX OF SECTIONS

Sheet 1	Title Sheet & Layout Map
Sheet 2-4	Estimate of Quantities, Environmental Commitments and Plan Notes
Sheet 5	Typical Sections
Sheet 6	Traffic Control Standard Plate



PROJECT



DESIGN DESIGNATION

SD 73 (MRM 25.11+0.000 to MRM 37.00+0.478)	
ADT (2025)	600
ADT (2045)	901
DHV	106
D	50
T DHV	9.1%
T ADT	20.1%
V	65 mph

BEGIN PROJECT
Sta. 0+00
MRM 25.11+0.000

END PROJECT
Sta. 482+27.52
MRM 37.00+0.478

SD 73	
Gross Length	64,215.36 Feet 12.162 Miles
Exception Length	0.0 Feet 0.0 Miles
Net Length	64,215.36 Feet 12.162 Miles

ESTIMATE OF QUANTITIES

BID ITEM NUMBER	ITEM	QUANTITY	UNIT
009E0010	Mobilization	Lump Sum	LS
009E4100	Construction Schedule, Category I	Lump Sum	LS
320E0402	Asphalt Repair Mastic Type 2	95,507	Lb
634E0010	Flagging	250.0	Hour
634E0020	Pilot Car	125.0	Hour
634E0110	Traffic Control Signs	147.0	SqFt
634E0120	Traffic Control, Miscellaneous	Lump Sum	LS

ENVIRONMENTAL COMMITMENTS

The SDDOT is committed to protecting the environment and uses Environmental Commitments as a communication tool for the Engineer and Contractor to ensure that attention is given to avoid, minimize, and/or mitigate an environmental impact. Environmental commitments to various agencies and the public have been made to secure approval of this project. An agency with permitting authority can delay a project if identified environmental impacts have not been adequately addressed. Unless otherwise designated, the Contractor's primary contact regarding matters associated with these commitments will be the Project Engineer. During construction, the Project Engineer will verify that the Contractor has met Environmental Commitment requirements. These environmental commitments are not subject to change without prior written approval from the SDDOT Environmental Office.

Additional guidance on SDDOT's Environmental Commitments can be accessed through the Environmental Procedures Manual found at: <https://dot.sd.gov/media/documents/EnvironmentalProceduresManual.pdf>

For questions regarding change orders in the field that may have an effect on an Environmental Commitment, the Project Engineer will contact the Environmental Engineer at 605-773-3180 or 605-773-4336 to determine whether an environmental analysis and/or resource agency coordination is necessary.

Once construction is complete, the Project Engineer will review all environmental commitments for the project and document their completion.

COMMITMENT B: FEDERALLY THREATENED, ENDANGERED, AND PROTECTED SPECIES
COMMITMENT B2: WHOOPING CRANE

The Whooping Crane is a spring and fall migratory bird in South Dakota that is about 5 feet tall and typically stops on wetlands, rivers, and agricultural lands along their migration route. An adult Whooping Crane is white with a red crown and a long, dark, pointed bill. Immature Whooping Cranes are cinnamon brown. While in flight, their long necks are kept straight and their long dark legs trail behind. Adult Whooping Cranes' black wing tips are visible during flight.

Action Taken/Required:

Harassment or other measures to cause the Whooping Crane to leave the site is a violation of the Endangered Species Act. If a Whooping Crane is sighted roosting in the vicinity of the project, borrow pits, or staging areas associated with the project, cease construction activities in the affected area until the Whooping Crane departs and immediately contact the Project Engineer. The Project Engineer will contact the Environmental Office so that the sighting can be reported to USFWS.

COMMITMENT B4: BALD EAGLE

Bald eagles are known to occur in this area.

Action Taken/Required:

If a nest is observed within one mile of the project site, notify the Project Engineer immediately so that he/she can consult with the Environmental Office for an appropriate course of action.

COMMITMENT E: STORM WATER

Construction activities constitute less than 1 acre of disturbance.

Action Taken/Required:

At a minimum and regardless of project size, appropriate erosion and sediment control measures must be installed to control the discharge of pollutants from the construction site.

COMMITMENT H: WASTE DISPOSAL SITE

The Contractor will furnish a site(s) for the disposal of construction and/or demolition debris generated by this project.

Action Taken/Required:

Construction and/or demolition debris may not be disposed of within the Public ROW.

The waste disposal site(s) will be managed and reclaimed in accordance with the following from the General Permit for Construction/Demolition Debris Disposal Under the South Dakota Waste Management Program issued by the Department of Agriculture and Natural Resources.

The waste disposal site(s) will not be located in a wetland, within 200 feet of surface water, or in an area that adversely affects wildlife, recreation, aesthetic value of an area, or any threatened or endangered species, as approved by the Environmental Office and the Project Engineer.

If the waste disposal site(s) is located such that it is within view of any ROW, the following additional requirements will apply:

1. Construction and/or demolition debris consisting of concrete, asphalt concrete, or other similar materials will be buried in a trench separate from wood debris. The final cover over the construction and/or demolition debris will consist of a minimum of 1 foot of soil capable of supporting vegetation. Waste disposal sites provided outside of the Public ROW will be seeded in accordance with Natural Resources Conservation Service recommendations. The seeding recommendations may be obtained through the appropriate County NRCS Office. The Contractor will control the access to waste disposal sites not within the Public ROW with fences, gates, and placement of a sign or signs at the entrance to the site stating, "No Dumping Allowed".

2. Concrete and asphalt concrete debris may be stockpiled within view of the ROW for a period not to exceed the duration of the project. Prior to project completion, the waste will be removed from view of the ROW or buried, and the waste disposal site reclaimed as noted above.

The above requirements will not apply to waste disposal sites that are covered by an individual solid waste permit as specified in SDCL 34A-6-58, SDCL 34A-6-1.13, and ARSD 74:27:10:06.

Failure to comply with the requirements stated above may result in civil penalties in accordance with South Dakota Solid Waste Law, SDCL 34A-6-1.31.

All costs associated with furnishing waste disposal site(s), disposing of waste, maintaining control of access (fence, gates, and signs), and reclamation of the waste disposal site(s) will be incidental to the various contract items.

STATE OF SOUTH DAKOTA	PROJECT	SHEET NO.	TOTAL SHEETS
	NH 0033(50)	3	6

Revised 3/16/2026 LT

COMMITMENT I: HISTORIC PRESERVATION OFFICE CLEARANCES

The SDDOT has obtained concurrence with the State Historic Preservation Office (SHPO or THPO) for all work included within the project limits and all department designated sources and designated option material sources, stockpile sites, storage areas, and waste sites provided within the plans.

Action Taken/Required:

All earth disturbing activities not designated within the plans require a cultural resource review prior to scheduling the pre-construction meeting. This work includes but is not limited to: Contractor furnished material sources, material processing sites, stockpile sites, storage areas, plant sites, and waste areas.

The Contractor will arrange and pay for a record search and when necessary, a cultural resource survey. The Contractor has the option to contact the state Archaeological Research Center (ARC) at 605-394-1936 or another qualified archaeologist, to obtain either a records search or a cultural resources survey. A record search might be sufficient for review if the site was previously surveyed; however, a cultural resources survey may need to be conducted by a qualified archaeologist.

The Contractor will provide ARC with the following: a topographical map or aerial view in which the site is clearly outlined, site dimensions, project number, and PCN. If applicable, provide evidence that the site has been previously disturbed by farming, mining, or construction activities with a landowner statement that artifacts have not been found on the site.

The Contractor will submit the cultural resources survey report to SDDOT Environmental Office, 700 East Broadway Avenue, Pierre, SD 57501-2586. SDDOT will submit the information to the appropriate SHPO/THPO. Allow **30 Days** from the date this information is submitted to the Environmental Engineer for SHPO/THPO review.

In the event of an inadvertent discovery of human remains, funerary objects, or if evidence of cultural resources is identified during project construction activities, then such activities within 100 feet of the inadvertent discovery will immediately cease and the Project Engineer will be immediately notified. The Project Engineer will contact the SDDOT Environmental Office, who will contact the appropriate SHPO/THPO within 48 hours of the discovery to determine an appropriate course of action.

SHPO/THPO review does not relieve the Contractor of the responsibility for obtaining any additional permits and clearances for Contractor furnished material sources, material processing sites, stockpile sites, storage areas, plant sites, and waste areas that affect wetlands, threatened and endangered species, or waterways. The Contractor will not utilize a site known or suspected of having contaminated soil or water. The Contractor will provide the required permits and clearances to the Project Engineer at the preconstruction meeting.

ENGINEER NOTIFICATION

The Contractor is required to notify the Area Engineer at least 10 days prior to beginning asphalt surface treatment operations.

SEQUENCE OF OPERATIONS

The Contractor will submit a proposed sequence of operations for the Engineer's review and approval at least two weeks prior to the preconstruction meeting.

The Contractor will coordinate the schedule of work to ensure that SD Highway 73 is fully open to traffic prior to nightfall.

If changes to the sequence of operations are proposed during the project, these must be submitted for review a minimum of one week prior to potential implementation. Approval for changes to the sequence of operations will only be allowed when the proposed changes meet with the Department's intent for traffic control and sequencing of the work.

GENERAL TRAFFIC CONTROL

Existing guide, route, informational logo, regulatory, and warning signs will be temporarily reset and maintained during construction. Removing, relocating, covering, salvaging, and resetting of existing traffic control devices, including delineation, will be the responsibility of the Contractor. Cost for this work will be incidental to the contract unit prices for the various items unless otherwise specified in the plans. Any delineators and signs damaged or lost will be replaced by the Contractor at no cost to the State.

All temporary traffic control sign locations will be set in the field by the Contractor and verified by the Engineer prior to installation.

All temporary speed limit signs will have a minimum mounting height of 5 feet in rural locations, even when mounted on portable supports.

If there is a discrepancy between the traffic control plans, standard plates, and the MUTCD, whichever is more stringent will be used, as determined by the Engineer.

Unless otherwise stated in these plans, work will not be allowed during hours of darkness.

Fixed location signing placed more than 4 calendar days prior to the start of construction will be covered or laid down until the time of construction. The covers must be approved by the Engineer prior to installation. The cost of materials, labor, and equipment necessary to complete this work will be incidental to other contract items. No separate payment will be made.

All fixed location signs, sign posts, and breakaway bases will be removed within 7 calendar days following fog seal completion.

All haul trucks will be equipped with an additional flashing amber light that is visible from the backside of the haul truck. The costs for the flashing amber lights will be incidental to the various related contract items.

Traffic will be maintained on the driving lanes. Use of the shoulder as a driving lane will not be permitted. Any damage to the shoulder due to rerouted traffic or Contractor's equipment will be repaired at no expense to the Department.

The Contractor will furnish, install, maintain, and remove TRUCK CROSSING (W8-6) signs daily. The TRUCK CROSSING signs will be displayed always when haul vehicles are hauling material. When hauling conditions no longer exist, the signs will be covered or removed from view. The exact number and location will be determined during construction. Payment for additional signs will be based on the contract unit price per square foot for "Traffic Control Signs".

FLAGGING

Operations will be conducted so that the traveling public will not have to wait longer than 15 minutes at the flagger station.

It is required that the flaggers and pilot car operators be able to communicate with one another. If an emergency vehicle needs to pass through the project, the Contractor will be required to expedite traffic movement. All costs associated with this will be incidental to the contract unit price per hour for "Flagging".

PERMANENT PAVEMENT MARKING

No Permanent Pavement Markings will be required on the project. The Contractor will take steps to protect the existing edge lines throughout the project.

Any damage to the existing pavement markings will be repaired at no expense to the State.

EXISTING PAVEMENT CONDITIONS

Existing pavement condition is smooth non-porous.

TRAFFIC VOLUMES

Traffic volumes for this highway segment are shown on the title page.

TABLES OF ASPHALT REPAIR MASTIC TYPE 2

SD HWY 73

From MRM 25.110 to 37.478

MRM TO MRM:	NO. OF CRACKS	CRACK LENGTH:	TOTAL FT.
25.110 to 26	64	24	1536
26 to 27	74	24	1776
27 to 28	63	24	1512
28 to 29	64	24	1536
29 to 30	85	24	2040
30 to 31	78	24	1872
31 to 32	74	24	1776
32 to 33	85	24	2040
33 to 34	81	24	1944
34 to 35	69	24	1656
35 to 36	64	24	1536
36 to 37	70	24	1680
37 to 37.478	36	24	864

TOTAL LENGTH OF CRACKS FOR SD73 = 21,768 LF
(For Information Only – Survey Estimate)

ITEMIZED LIST FOR TRAFFIC CONTROL

SIGN CODE	SIGN DESCRIPTION	CONVENTIONAL ROAD			
		NUMBER	SIGN SIZE	SQFT PER SIGN	SQFT
W8-6	TRUCK CROSSING	2	48" x 48"	16.0	32.0
W16-2P	FEET (supplemental distance plaque)	2	30" x 24"	5.0	10.0
W20-1	ROAD WORK AHEAD	2	48" x 48"	16.0	32.0
W20-4	ONE LANE ROAD AHEAD	2	48" x 48"	16.0	32.0
W20-7	FLAGGER (symbol)	2	48" x 48"	16.0	32.0
G20-2	END ROAD WORK	2	36" x 18"	4.5	9.0
CONVENTIONAL ROAD TRAFFIC CONTROL SIGNS SQFT					147.0

QUANTITIES BY ROUTE (FOR INFORMATION ONLY)

<u>Location</u>	<u>Length (FT)</u>	<u>Cubic Feet</u>	<u>Pound</u>
SD73	21,768	1134	95,507
Grand Totals	21,768	1134	95,507

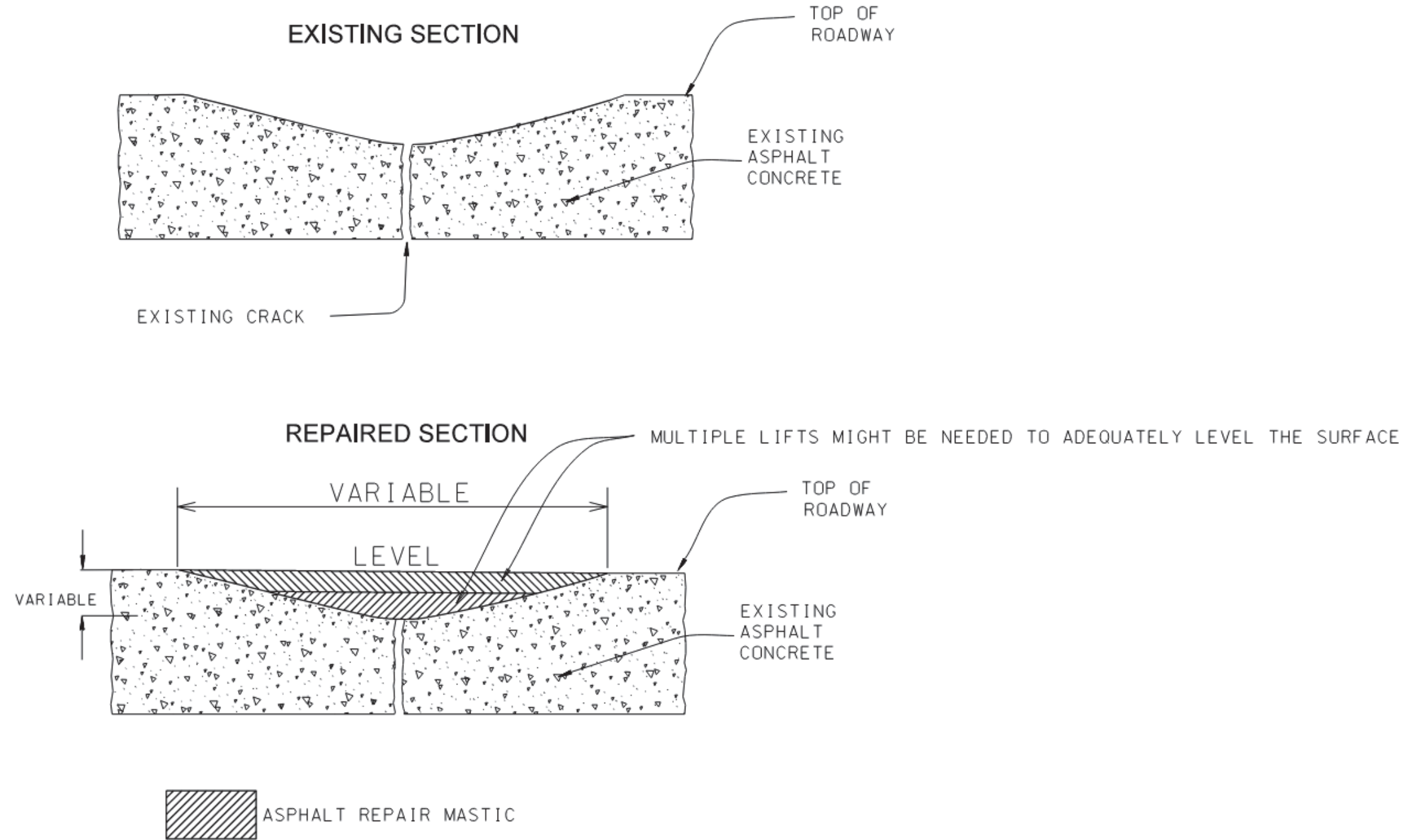
ASPHALT REPAIR MASTIC TYPE 2

Only transverse joints in driving lanes will be repaired. Repairs shall be performed on transverse cracks from white line to white line. The top of the road will typically be at the width as listed in the above tables.

The average width of repair locations varies from 16 to 24 inches but some locations may be wider. The average depth of the repair locations is 1/2", but some locations are over 1/2" deep. The use of a 3' squeegee may be required to ensure the entire depression is filled. The size of squeegee needed will be determined in the field by the Engineer.

It is estimated there are 21,768 Ft. of joints to be repaired. The quantity of Asphalt Repair Mastic Type 2 may vary from the plans. No adjustment in the contract unit price for Asphalt Repair Mastic Type 2 will be made due to variation in quantities.

TYPICAL SECTION FOR CRACK LEVELING



Posted Speed Prior to Work (M.P.H.)	Spacing of Advance Warning Signs (Feet) (A)	Spacing of Channelizing Devices (Feet) (G)
0 - 30	200	25
35 - 40	350	25
45	500	25
50	500	50
55	750	50
60 - 65	1000	50

- Flagger
- Channelizing Device

For low-volume traffic situations with short work zones on straight roadways where the flagger is visible to road users approaching from both directions, a single flagger may be used.

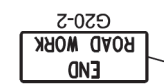
The ROAD WORK AHEAD and the END ROAD WORK signs may be omitted for short duration operations (1 hour or less).

For tack and/or flush seal operations, when flaggers are not being used, the FRESH OIL sign (W21-2) will be displayed in advance of the liquid asphalt areas.

Flashing warning lights and/or flags may be used to call attention to the advance warning signs.

The channelizing devices will be drums or 42" cones.

Channelizing devices are not required along the centerline adjacent to work area when pilot cars are utilized for escorting traffic through the work area.

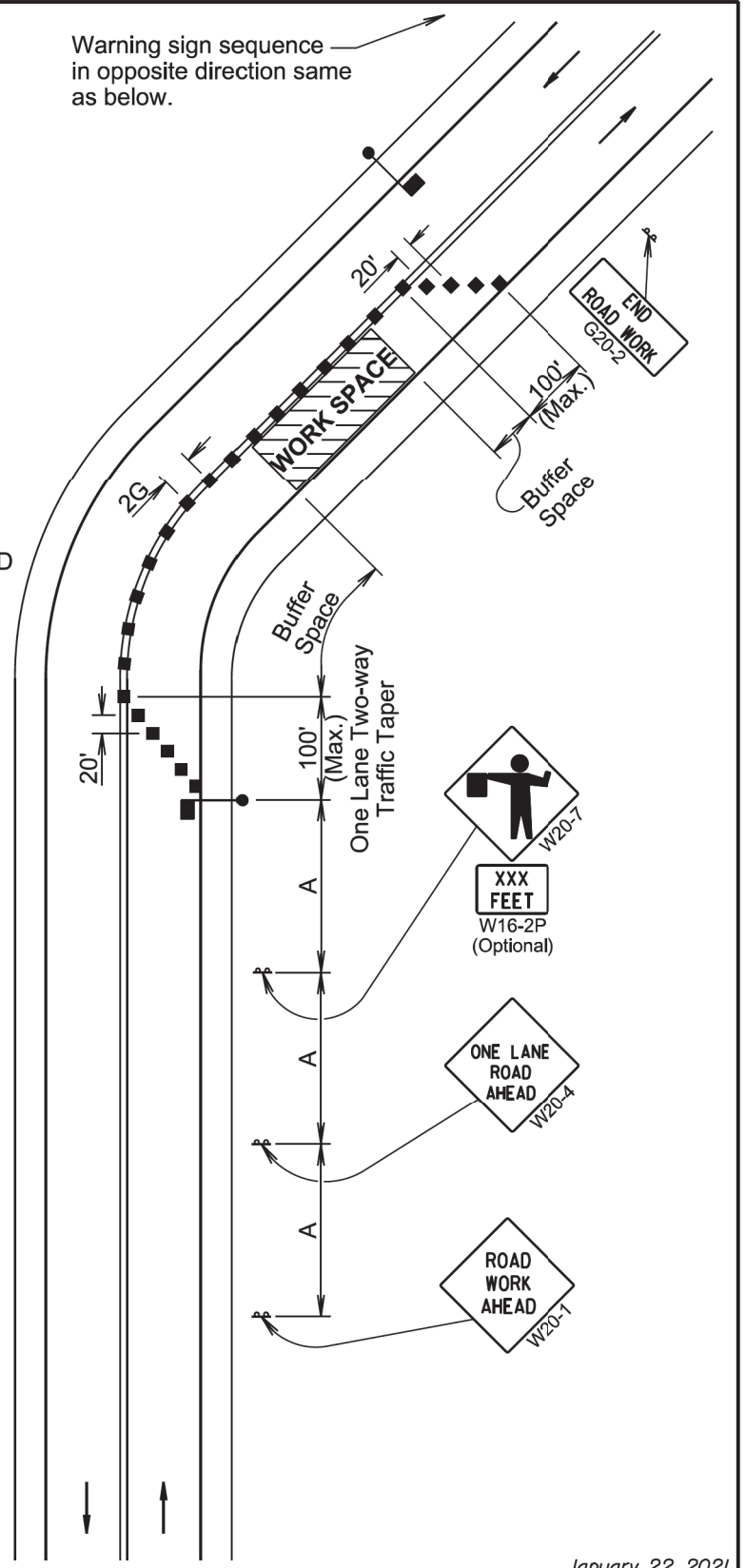


Channelizing devices and flaggers will be used at intersecting roads to control intersecting road traffic as required.

The buffer space should be extended so that the two-way traffic taper is placed before a horizontal or vertical curve to provide adequate sight distance for the flagger and queue of stopped vehicles.

The length of A may be adjusted to fit field conditions.

Warning sign sequence in opposite direction same as below.



January 22, 2021

S D D O T	LANE CLOSURE WITH FLAGGER PROVIDED	PLATE NUMBER 634.23
	Published Date: 2026	Sheet 1 of 1

Plot Scale - 1:200

TRW11N119

Plotted From -

File - ...10A49 Note Template.dgn