

# Department of Transportation

**Rapid City Region Office**

**2300 Eglin Street**

**P.O. Box 1970**

**Rapid City, SD 57709-1970**

**Phone: 605/394-2244**

**FAX: 605/394-1904**

April 11, 2014

## **ADDENDUM NO. 1**

RE: April 15, 2014 Rapid City Region Office Informal Letting  
SRTS(18), Custer Co., PCN 03c2, Hermosa Safe Routes to School (Sidewalk)

### **TO WHOM IT MAY CONCERN:**

The following addenda to the plans shall be inserted and made part of your proposal for the referenced project.

#### **PROPOSAL:**

- No change.

#### **PLANS:**

- Please replace sheets 2 and 19. The plans were revised to clarify that electrical junction boxes shall be adjusted in elevation to be flush with the sidewalk elevation.

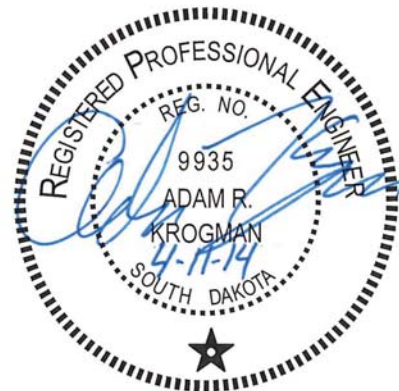
Sincerely,

---

John Rehorst  
Region Design Engineer

**ESTIMATE OF QUANTITIES**

BID ITEM NUMBER	ITEM	QUANTITY	UNIT
009E0010	Mobilization	Lump Sum	LS
009E3200	Construction Staking	Lump Sum	LS
009E3300	Three Man Survey Crew	10	Hour
100E0100	Clearing	Lump Sum	LS
110E1010	Remove Asphalt Concrete Pavement	1198	SqYd
110E1690	Remove Sediment	0.5	Cuyd
110E1695	Remove Sediment Filter Bag	64	Ft
110E1700	Remove Silt Fence	76	Ft
120E0600	Contractor Furnished Borrow	405	CuYd
230E0100	Remove and Replacing Topsoil	1	LS
250E0020	Incidental Work, Grading	Lump Sum	LS
260E1010	Base Course	446	Ton
320E1200	Asphalt Concrete Composite	70	Ton
380E4010	6" PCC Fillet Section	78	SqYd
450E0103	12" RCP Class 3, Furnish	48	Ft
450E0110	12" RCP, Install	48	Ft
450E2000	12" RCP Flared End, Furnish	2	Each
450E2001	12" RCP Flared End, Install	2	Each
632E3520	Remove, Salvage, Relocate, and Reset Traffic Sign	3	Each
634E0010	Flagging	160	Hour
634E0100	Traffic Control	320	Unit
634E0120	Traffic Control, Miscellaneous	Lump Sum	LS
650E0060	Type B66 Concrete Curb And Gutter	636	Ft
651E0040	4" Concrete Sidewalk	3736	SqFt
651E7000	Type 1 Detectable Warnings	40	SqFt
670E1010	2' x 3' Type B Drop Inlet	2	Each
700E0110	Class A Riprap	11	Ton
730E0210	Type F Permanent Seed Mixture	8	Lb
732E0100	Mulching	1	Ton
734E0101	Type 1 Erosion Control Blanket	1107	SqYd
734E0180	Sediment Filter Bag	64	Ft
734E0604	High Flow Silt Fence	76	Ft
734E0845	Sediment Control At Inlet With Frame And Grate	2	Each
734E5010	Sweeping	32	Hour
831E0110	Type B Drainage Fabric	22	SqYd
900E0012	Refurbish Double Mailbox	1	Each
900E1080	Orange Plastic Safety Fence	100	Ft
900E5110	Bike Rack	1	Each
998E0100	Railroad Protective Insurance	1	LS



**GRADING OPERATIONS**

Water for Embankment is estimated at the rate of 10 gallons of water per cubic yard of Embankment minus Waste. The estimated quantity of Water for Embankment is 5 MGal. No separate payment will be made for the Water for Embankment and all costs associated shall be incidental to the project

Sections of the roadway different than the typical section shall be constructed to the limits shown on the cross sections. If significant changes to the cross sections are necessary during construction, the Engineer shall contact the Designer for the proposed change.

**UTILITIES**

The Contractor shall be aware that the existing utilities shown in the plans were surveyed prior to the design of this project and might have been relocated or replaced by a new utility facility prior to construction of this project, might be relocated or replaced by a new utility facility during the construction of this project, or might not require adjustment and may remain in its current location. The Contractor shall contact each utility owner and confirm the status of all existing and new utility facilities. The utility contact information is provided elsewhere in the plans or bidding documents.

**CLEARING**

Before clearing activities begin, the Contractor shall contact the Engineer to determine the limits of clearing for the project. If items that are supposed to remain within the limits of work are damaged or destroyed by the Contractor, the Contractor shall replace them with the same size and type at the Contractor's expense.

**INSLOPE TRANSITIONS**

Inslope transitions will be required at various pipe locations. Refer to Standard Plate 120.05 for details.

**UNCLASSIFIED EXCAVATION**

Any excavation required for the construction of the improvements shown in this plan set shall be considered incidental to the project. No separate payment will be made.

**CONTRACTOR FURNISHED BORROW**

An estimated 405 cubic yards of Contractor furnished borrow will be required to construct the project. The Contractor shall provide a suitable site for Contractor furnished borrow material. The Contractor is responsible for obtaining all required permits and clearances for the borrow site. The borrow material shall be approved by the Engineer. The plans quantity for "Contractor Furnished Borrow" as shown in the Estimate of Quantities will be the basis of payment for this item no separate measurement will be made.

Restoration of the Contractor furnished borrow site shall be the responsibility of the Contractor.

**INCIDENTAL WORK, GRADING**

Station	L/R	Remarks
41+36	L	Adjust Electrical Junction Box Elevation
41+89	L	Adjust Electrical Junction Box Elevation
43+97	L	Relocate Reflector

STATE OF SOUTH DAKOTA	PROJECT	SHEET NO.	TOTAL SHEETS
	NH 0016(78)67	2	39

**TABLE OF ASPHALT CONCRETE PAVEMENT REMOVAL** REV 04-11-14 ARK

Station	To	Station	L/R	Quantity (SqYd)
38+31		45+56	L	1,198
Total:				1,198

**STORM SEWER**

Reinforced concrete pipe may be either bell and spigot or tongue and groove. The pipe sections shall be adjoined such that the ends are fully entered and the inner surfaces are reasonably flush and even.

Lift holes in the reinforced concrete pipe shall be plugged with grout.

**TABLE OF PIPE QUANTITIES**

Station	Offset	L/R	12" RCP CI 3 (Ft)	12" RCP Flared End (Ea)
40+57.9	13.7'	to 41.5'	L 28	
40+57.9		47.5'	L	1
45+27.5	13.7'	to 33.4'	L 20	
45+27.5		39.4'	L	1
Total:			48	2

**DROP INLETS**

The plan shown quantities of "2'x3' Type B Drop Inlet" per each will be the basis of payment for these items. Payment will be full compensation for furnishing and installing all cast iron grates, concrete, reinforcing steel, precast collars and all other items necessary for a complete drop inlet structure.

**TABLE OF RIPRAP AND DRAINAGE FABRIC**

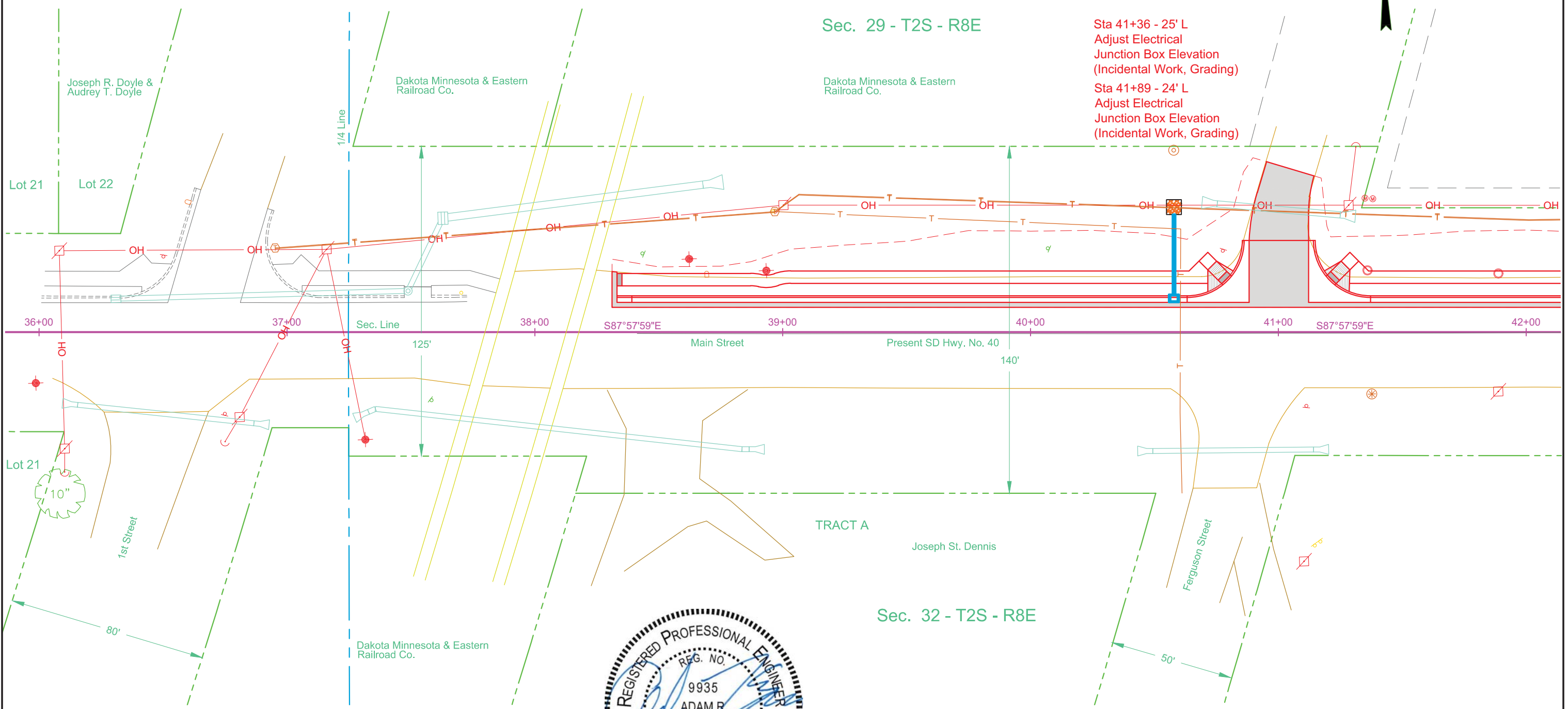
Station	L/R	Class A Riprap (Ton)	Type B Drainage Fabric (SqYd)
40+58	L	5.4	11
45+28	L	5.4	11
Totals:		10.8	22

Install 2'x3' Type B Drop  
Inlet With Type B Frame and Grate  
At The Following Locations:

40+57.9-13.67' L

40+57.9 - 13.7' L to  
40+57.9 - 41.5' L  
Install 12" - 28' RCP  
& 1 Flared End  
(Between Drop Inlet &  
Flared End)

40+57.9 - 50.5' L  
Install 2' Thick  
Class A Riprap &  
Type B Drainage Fabric  
(See Riprap Detail Sheets)



Sec. 29 - T2S - R8E

Sta 41+36 - 25' L  
Adjust Electrical  
Junction Box Elevation  
(Incidental Work, Grading)

Sta 41+89 - 24' L  
Adjust Electrical  
Junction Box Elevation  
(Incidental Work, Grading)

Dakota Minnesota & Eastern  
Railroad Co.

TRACT A

Sec. 32 - T2S - R8E

