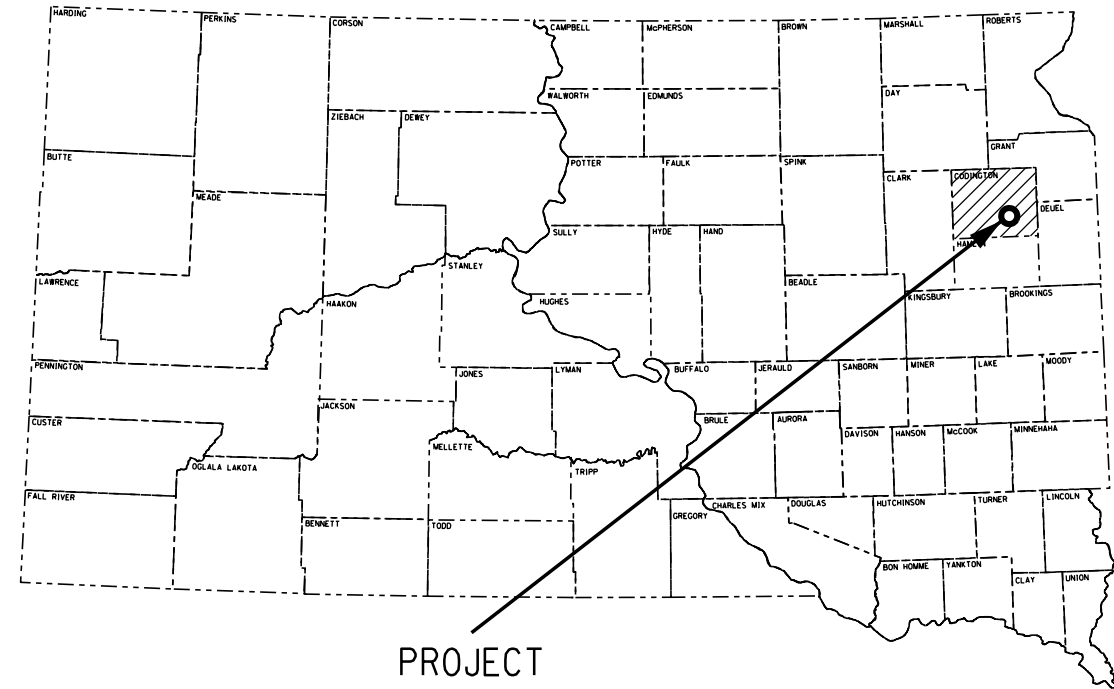


PLOT SCALE - 1:1400

PLOTTED FROM - TRAB17882



PROJECT

STATE OF SOUTH DAKOTA
DEPARTMENT OF TRANSPORTATION
PLANS FOR PROPOSED

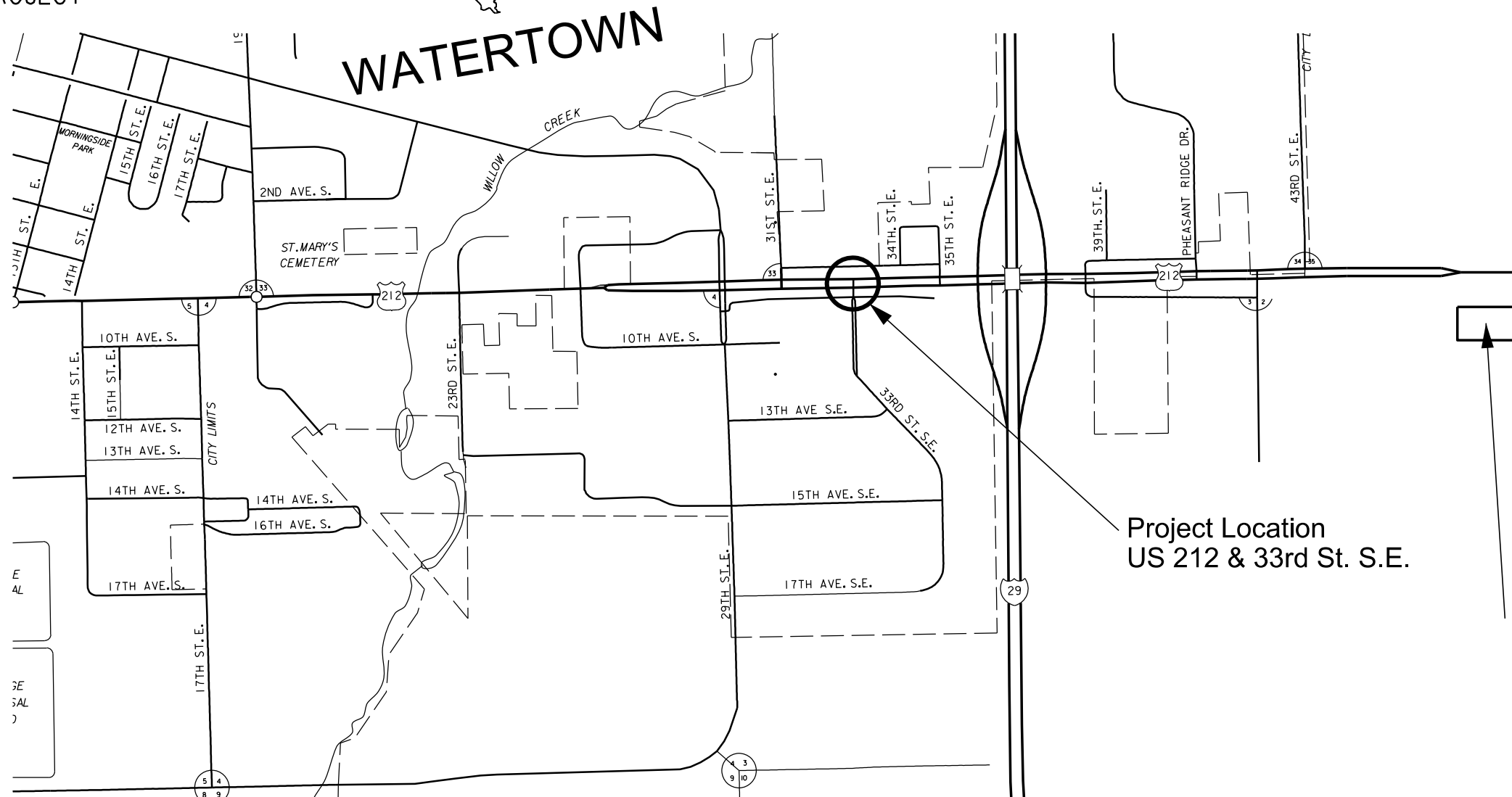
PROJECT NH 0212(00)379
U.S. HIGHWAY 212
CODINGTON COUNTY

FURNISH TRAFFIC SIGNAL POLES AND CONTROLLER
PCN 07M7

STATE OF SOUTH DAKOTA	PROJECT	SHEET NO.	TOTAL SHEETS
	NH 0212(00)379	1	4
Plotting Date: 10/21/2019			

INDEX OF SHEETS

Sheet 1	Title Sheet & Layout Map
Sheet 2	Estimate of Quantities & Plan Notes
Sheet 3	Proposed Signal Layout
Sheet 4	Standard Plates



Project Location
US 212 & 33rd St. S.E.

DELIVERY LOCATION:
SDDOT WATERTOWN
AREA OFFICE COMPLEX
5000 9TH AVE SE

STORM WATER PERMIT
NONE REQUIRED

FILE - ... \CODN07M7\07M7 TITLE SHEET.DGN

PLOT NAME - 1

ESTIMATE OF QUANTITIES

BID ITEM NUMBER	ITEM	QUANTITY	UNIT
009E0010	Mobilization	Lump Sum	LS
635E2035	Signal Pole with 35' Mast Arm	1	Each
635E2045	Signal Pole with 45' Mast Arm	1	Each
635E2050	Signal Pole with 50' Mast Arm	1	Each
635E6961	Furnish Traffic Signal Controller	1	Each

SPECIFICATIONS

Standard Specifications for Roads and Bridges, 2015 Edition and Required Provisions, Supplemental Specifications and Special Provisions as included in the Proposal.

GENERAL NOTES

The Contractor will furnish and deliver Signal Poles with Mast Arms and Traffic Signal Controller to the South Dakota Department of Transportation (SDDOT), Watertown Area Maintenance Yard located at 5000 9th Ave SE in Watertown. SDDOT Maintenance staff at the Watertown Maintenance Yard will assist in unloading of the poles. Contact Calvin Esche 605-882-5166 a minimum of 5 business days in advance of pole delivery to make arrangements for assistance in unloading of poles.

All costs to furnish and deliver the furnished equipment shall be incidental to the various contract items.

SHOP DRAWING AND CATALOG CUTS SUBMITTALS

The Contractor will submit shop drawings and catalog cuts in accordance with Section 985 of the Specifications.

Adobe PDF submittals shall be sent to the following email addresses:

Dan.Martell@state.sd.us
Corey.Pinkley@state.sd.us

POLES

Cantilever traffic signal supports, including anchor bolts, will be designed for fatigue in accordance with Fatigue Importance Category II without galloping and truck induced gusts.

Signal poles will have rotatable mast arms.

ANCHOR BOLTS

Anchor bolts for the poles will be designed for a minimum footing diameter of 3 ft.

Anchor bolts for Signal Poles with Mast Arms will be furnished by the Contractor. Costs to furnish and deliver the anchor bolts will be incidental to the contract unit price for the various signal poles.

TRAFFIC SIGNAL CONTROLLER

The traffic signal controllers will be compatible with existing equipment in Watertown SD.

The Contractor will supply 12 load switches with the controller.

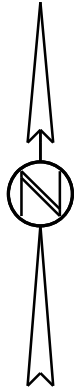
The controller should be a complete controller assembly with a necessary hardware to mount the controller to a concrete footing.

The provision of a USB port on the traffic signal controller is optional.

All costs for furnishing the mounting hardware for the traffic signal controller will be incidental to the contract unit price per each for FURNISH TRAFFIC SIGNAL CONTROLLER.

PROPOSED SIGNAL LAYOUT

STATE OF SOUTH DAKOTA	PROJECT	SHEET NO.	TOTAL SHEETS
	NH 0212(00)379	3	4
Plotting Date: 10/21/2019			



A1 59+53-74' L+

A2 60+61-74' L+

A5 59+63-6' L+

A3 60+60-10' R+

A4 60+72- 74' R+

59+00

60+00

61+00

33rd
St SE

PLOT SCALE - 1"=30'

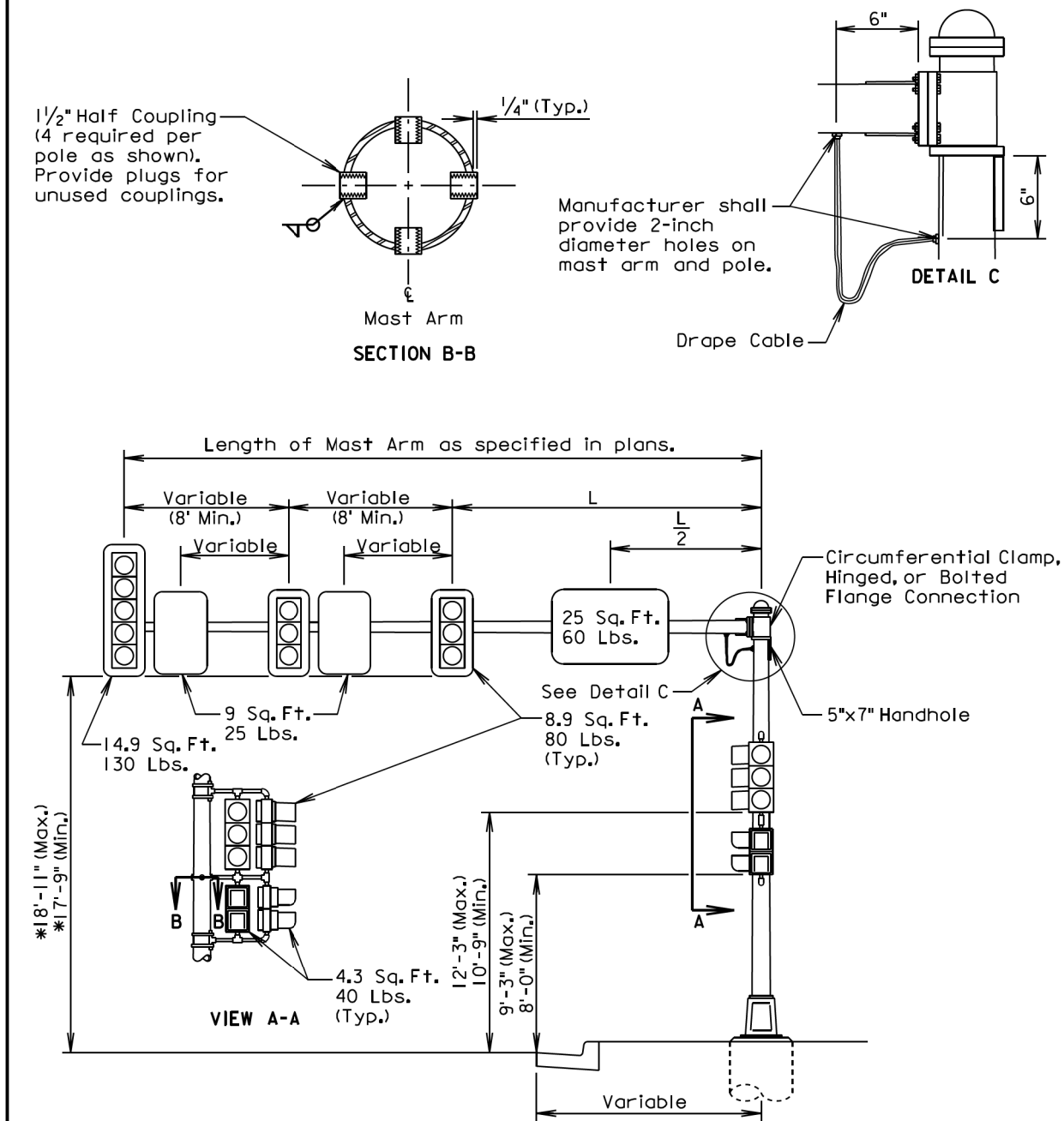
PLOTTED FROM - TRAB17882

FILE - ... \CODN07M7\PROPOSED LAYOUT.DGN

PLOT NAME - 2

STATE OF SOUTH DAKOTA	PROJECT NH 0212(00)379	SHEET 4	TOTAL SHEETS 4
-----------------------------	---------------------------	------------	----------------------

Plotting Date: 10/21/2019



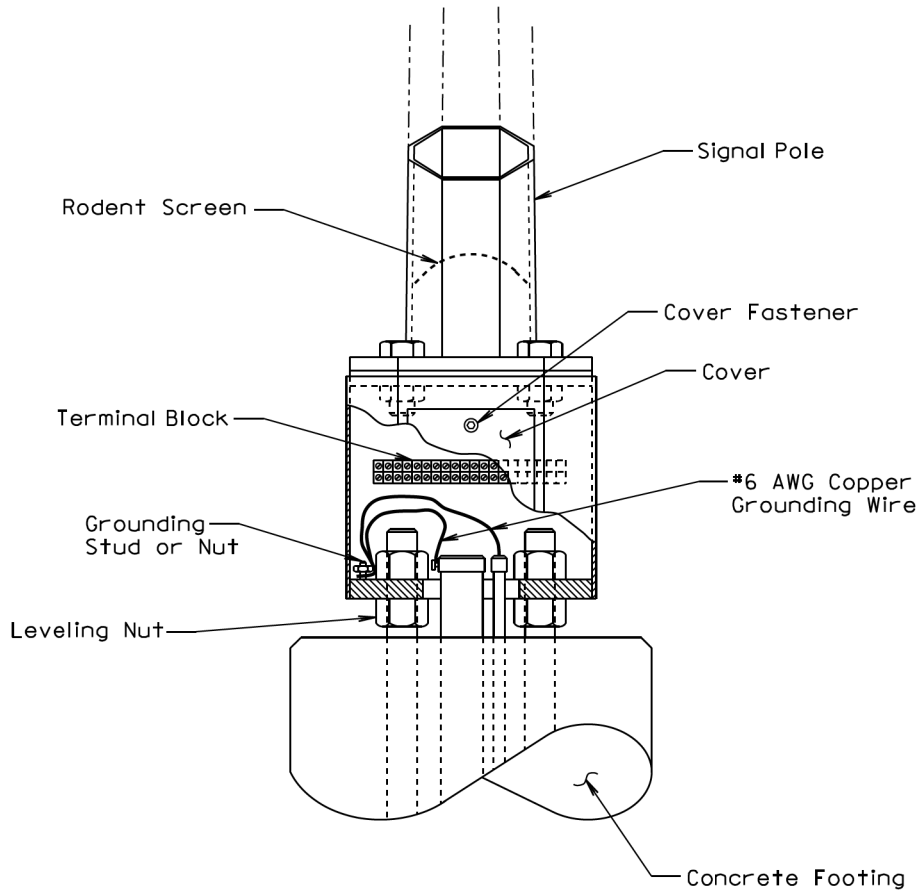
GENERAL NOTES:

Some of the signal heads are shown with backplates removed so that the mounting hardware is visible.

*The signal height allowances shown above are based on a horizontal distance greater than 53' between the signals and stop line. For horizontal distance of 53' and less between the signals and the stop line, the height allowances shall be as specified in Section 4D.15 of the MUTCD.

June 26, 2016

Published Date: 3rd Qtr. 2019	S D D O T	SIGNAL POLE (WITH MAST ARM)	PLATE NUMBER 635.31
			Sheet 1 of 1



GENERAL NOTES:

Base details are provided for example only and are not intended to be a complete design.

The Contractor shall furnish and install a rodent screen in the signal pole above the transformer base. The rodent screen shall be a galvanized steel mesh with a maximum opening size of 1/4 inch. The rodent screen shall be friction fitted or installed by other methods approved by the Engineer.

All costs for furnishing and installing the rodent screen including labor, equipment, and materials shall be incidental to the contract unit price per each for the corresponding signal pole bid item.

December 23, 2008

Published Date: 3rd Qtr. 2019	S D D O T	TRANSFORMER SIGNAL POLE BASE	PLATE NUMBER 635.50
			Sheet 1 of 1