

Department of Transportation

Rapid City Region Office

2300 Eglin Street

P.O. Box 1970

Rapid City, SD 57709-1970

Phone: 605/394-2244

FAX: 605/394-1904

March 15, 2022

ADDENDUM NO. 1

RE: March 30, 2022 Rapid City Region Office Informal Letting
P-B 0244(111)27, Pennington County, PCN 08UD
Prepurchase Structural Steel

TO WHOM IT MAY CONCERN:

The following addenda to the plans shall be inserted and made part of your proposal for the referenced project.

PROPOSAL:

- No change.

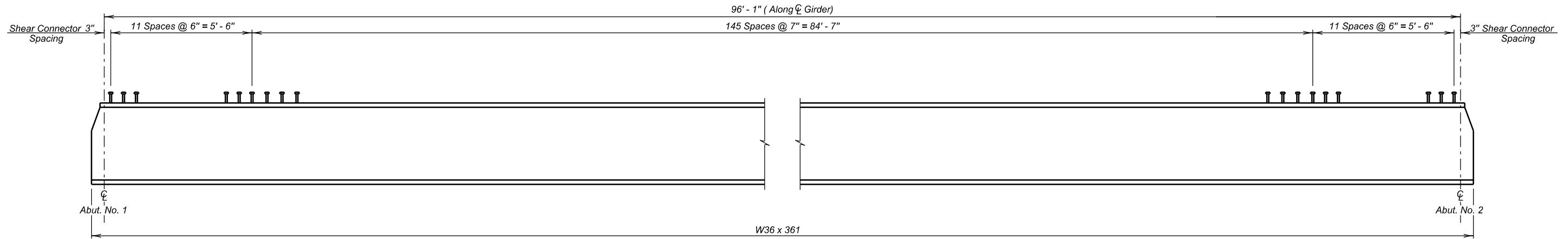
PLANS:

- Replace Sheet 5 with the attached. Added note 7 to allow a plate girder as a substitute to rolled girder section.

Sincerely,

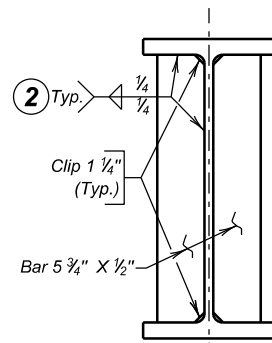
John Rehorst
Region Design Engineer

STATE OF	PROJECT	SHEET NO.	TOTAL SHEETS
S.D.	P-B 0244(11)27	5	7

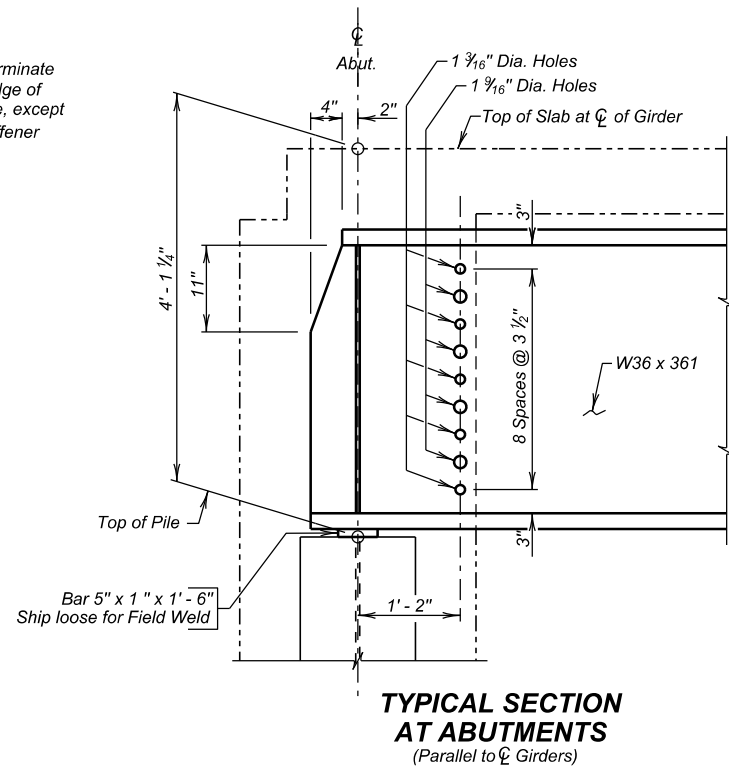


GIRDER LAYOUT

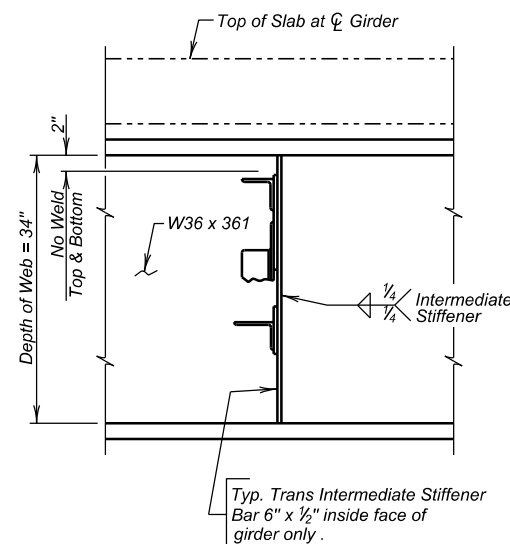
2 NOTE: All fillet welds will terminate 1/2" from edge of stiffener, edge of flange, or clip as appropriate, except weld from clip to edge of stiffener at top flange.



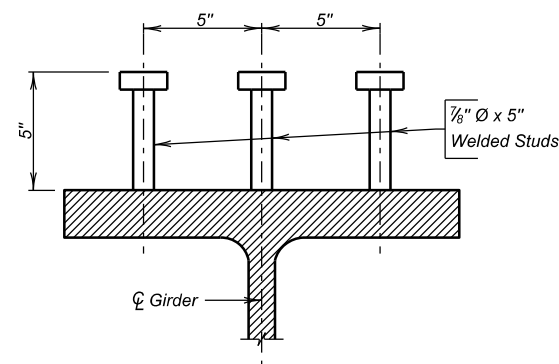
END VIEW



TYPICAL SECTION AT ABUTMENTS
(Parallel to Centerline of Girders)



TYPICAL SECTION AT DIAPHRAGM STIFFENER



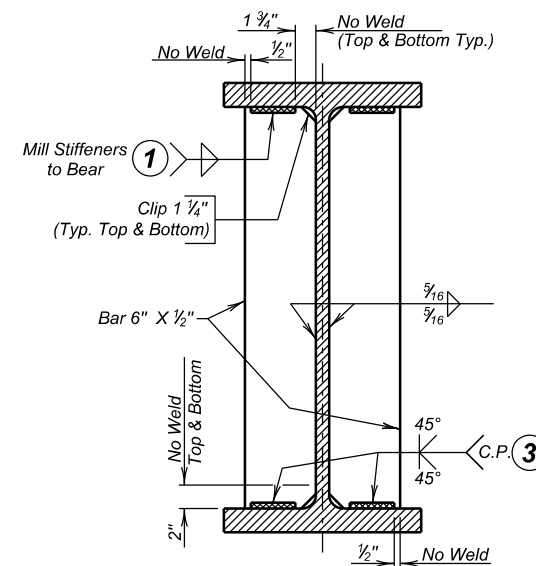
SHEAR CONNECTOR DETAILS

Welded Stud Shear Connectors are spaced as shown on Girder Layout. Shear Connectors will be field installed and are shown here for informational purposes only. Payment for providing Shear Connectors will be included in the Lump Sum bid for Structural Steel, Furnish. 504 Shear Connectors per Girder.

NOTES:

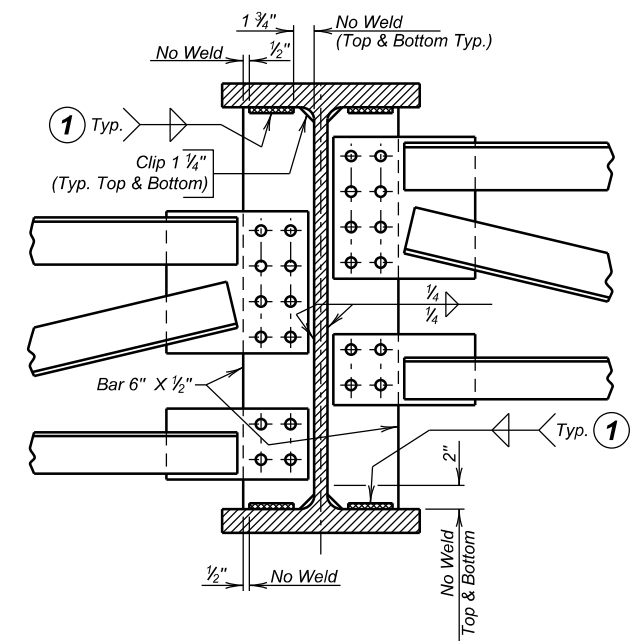
1. See DIAPHRAGM DETAILS Sheet for Diaphragm Details.
2. See FRAMING DIAGRAM, CAMBER, & ERECTION DATA Sheet for spacing of Diaphragms, Stiffeners, and Girder Camber.
3. All dimensions shown are horizontal or vertical.
4. All Stiffeners and Girder Ends will be made normal to flanges, except bearing stiffeners at abutments will be vertical.
5. Stiffeners to have tight fit top and bottom.
6. Dimensions shown are for steel temperature of 45° F.
7. A plate girder with equivalent section and strength will be allowed as a substitute for the rolled girder section.

3 Alternately, Mill Stiffeners to Bear & use 5/16" Fillet Weld, same as at Top Flange.



DETAILS OF STIFFENERS AT CENTERLINE BEARINGS
(Exterior Girder shown)

1 NOTE: All fillet welds attaching diaphragm or bearing stiffeners to girder flanges, will terminate 1/2" from edge of stiffener, edge of flange, or clip as appropriate. Weld size to be 5/16".



DETAILS OF STIFFENERS AT INTERMEDIATE DIAPHRAGMS
(Interior Girder shown)

GIRDER LAYOUT DETAILS

FOR

98' - 10 9/16" COMP. STEEL GIRDER BRIDGE
64' - 0" ROADWAY
OVER PALMER CREEK
STA. 34 + 84.14 TO STA. 35 + 83.02
STR. NO. 52-261-428

30° L.H.F. SKEW
SEC. 4-T2S-R5E
P-B 0244(11)27
HL-93

PENNINGTON COUNTY
S. D. DEPT. OF TRANSPORTATION

NOVEMBER 2021

3 OF 5

DESIGNED BY BB PENN08UD	CK. DES. BY PW 08UDTA03	DRAFTED BY BT	Steve A. Johnson BRIDGE ENGINEER
-------------------------------	-------------------------------	------------------	-------------------------------------