



Division of Operations

Aberdeen Region Office
West Highway 12
PO Box 1767
Aberdeen, South Dakota 57402-1767
O: 605.626.2244 | F: 605.626.7875
dot.sd.gov

December 8, 2023

ADDENDUM NO. 1

Re: **IM 0297(00)177, PCN 09NT**
Codington County
Bridge Girder Repair

TO WHOM IT MAY CONCERN:

PROPOSAL: No Changes

PLANS: Please destroy Sheet 21 and replace with the enclosed Sheet 21, revised 11-30-23. The Estimate of Quantities on this sheet was corrected as the bid items did not properly match the units or quantities.

When sending in your sealed bid please state on the front of the envelope that Addendum No. 1 was received.

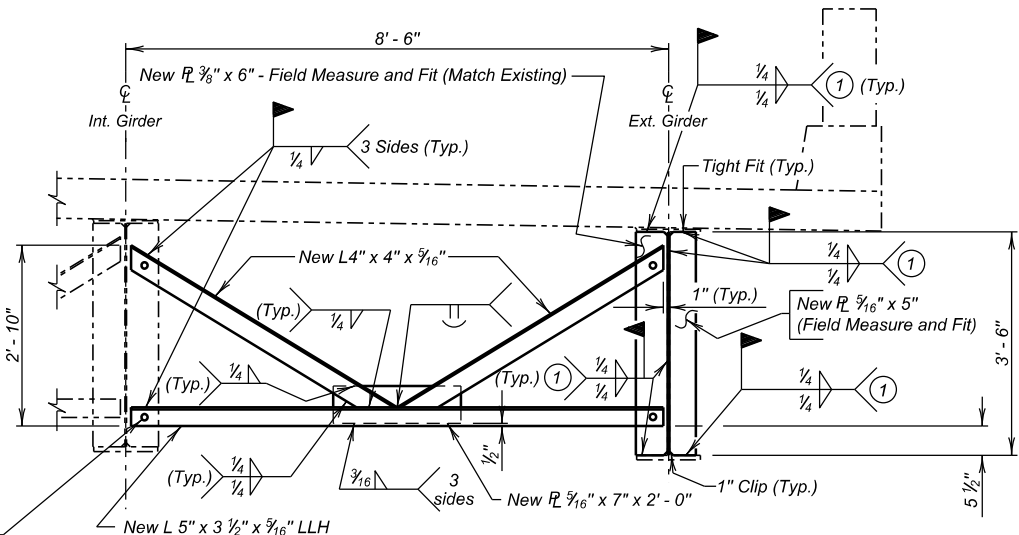
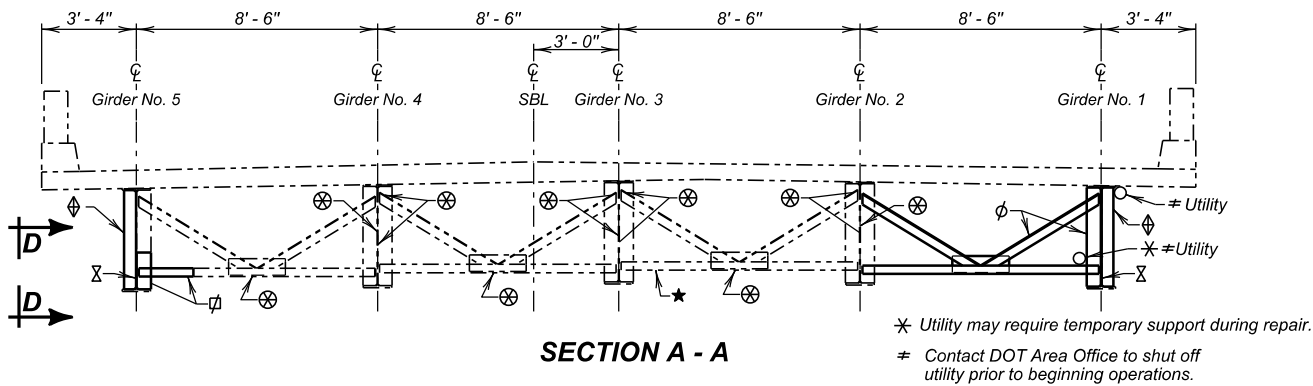
Sincerely,

DEPARTMENT OF TRANSPORTATION

Mark Peterson
Region Engineer

cc: [M. Brey](#) C. Bennett Steen H. Eisenbeisz File

Revised 11/30/2023 T.J.M.

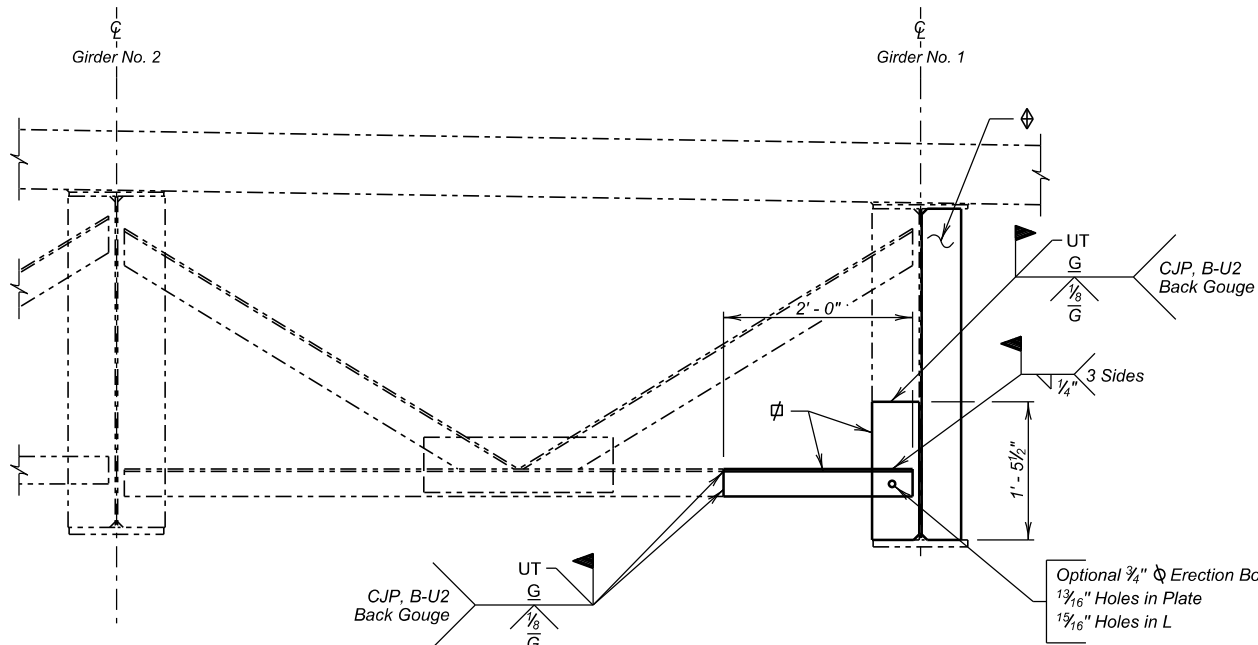


Optional 3/4" ϕ Erection Bolts
1 3/16" Holes in Plates
1 3/16" Holes in L's
(Use existing holes in
existing stiffeners,
field drill all others.)

REMOVE AND REPLCE DIAPHRAGM DETAIL

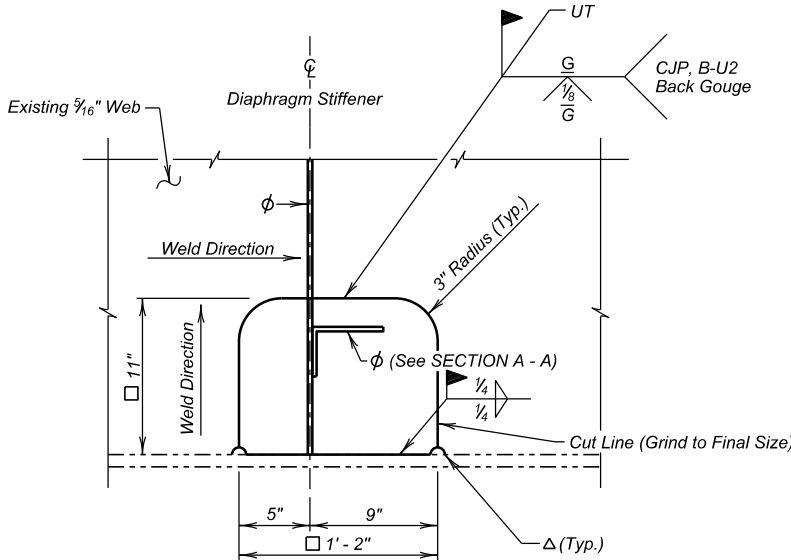
(Any repairs on diaphragms and diaphragm stiffeners will be welded as shown)

① Terminate all fillet welds attaching stiffener to
girder 1/2" from edge of stiffener or clip as applicable.



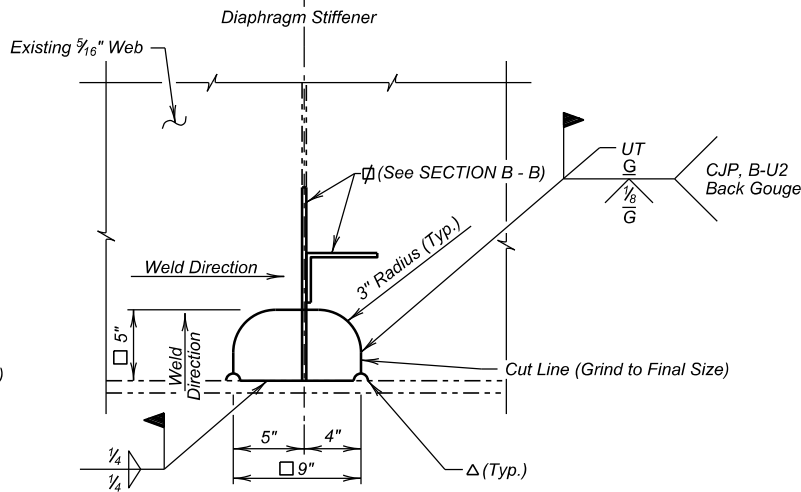
SECTION B - B

(Partial replacement shown in Section A-A is similar by opposite hand)



DETAIL "W"

(Girder No. 1 - Interior Face)



DETAIL "V"

(Girder No. 1 - Interior Face)

NOTES:

△ Start the web section removal by cutting a 1/2" radius cope in as shown. After installation of the new web section, resize the cope to 1" radius ensuring the weld tips are ground out. The finish surface shall be smooth.

□ The remove and replace area is an approximation. The actual removal shall be such that the torn area of the web is removed. The removal area shall have 3" radius corners as shown then transition vertically to the bottom flange. The new portion of the web will need to be cut to fit. The edge of the removal area and new web section will be beveled for the B-U2 weld.

ESTIMATED QUANTITIES

ITEM	UNIT	QUANTITY
Remove Structural Steel Member(s)	LS	Lump Sum
Structural Steel, Install	LS	Lump Sum
Remove and Replace Web	Each	3
Remove and Replace Transverse Stiffener	Each	3
Remove and Replace Steel Diaphragm	Each	1

For informational purposes only, the estimated total structural steel quantity for Remove and Replace Web is 23 lbs.

For informational purposes only, the estimated total structural steel quantity for Remove and Replace Transverse Stiffener is 56 lbs.

For informational purposes only, the estimated total structural steel quantity for Remove and Replace Steel Diaphragm is 197 lbs, including plates, diaphragm stiffeners, and diaphragm angles.

For informational purposes only, the estimated total structural steel quantity for partial replacement of steel diaphragm and diaphragm stiffener is 58 lbs.

(SOUTH BOUND LANES)
GIRDER REPAIR DETAILS (D)
FOR

308' - 0" CONT. COMPOSITE GIRDER BRIDGE
38' - 0" ROADWAY
OVER U.S. 212
STR. NO. 15-214-180

0° SKEW
SEC. 3/34-T116/117N-R52W
IM 0297(00)177

CODINGTON COUNTY
S. D. DEPT. OF TRANSPORTATION
NOVEMBER 2023

10 OF 16