

Bison Abrasive Storage Building

63 X 60

SPECIFICATIONS

Pre-engineered fabric building for Salt/Sand Storage

Scope – Manufacture, deliver, and construct one 63' X 60' pre-engineered fabric building. Existing building is a Coverall Building. Project includes existing building demolition and demolition of electrical back to the foundation mounted panel. Building site location is Bison SD. New structure will utilize the existing concrete retaining wall structure. Any required modifications to the structure to accommodate the new building will be included in this proposal. Any foundation modifications will be stamped by a SD licensed engineer. No new electrical will be required. All dimensions are for bidding purposes only. Field verification is required and the responsibility of the contractor.

Project to be complete by October 1, 2026

SPECIFICATIONS

A. Minimum Design Specifications for Cover Building including one End Wall.

1. Design to Withstand 40 lbs. Ground Snow Load (IBC 2021).
2. Design to Withstand 115 mph Wind Load Exposure (IBC 2021).
 - i. Include Pressure and Suction of Wind Load.
3. Design to withstand normal interior lighting packages.
4. Building Plans to be Sealed by a Licensed Professional Engineer
 - i. All Base Plate Reactions are to be Listed on all Sealed Building Plans
 - ii. Engineer to be licensed in the State of Building Use.
 - iii. Sealed Building Plans are to be Site Location Specific
5. No Cable or Building Supports shall Intrude in Clear Span Area
6. Building will be 63' in Nominal Width
 - i. Measured (Feet'-Inch") at Outside of Base Plates to Outside of Base Plates
7. Building will be approximately 60' in Length
 - i. Measured (Feet'-Inch") to Center of Base Plate to Center of Base Plates

8. Building Center is a Minimum Inside Height of 21' (Feet'-Inch") from Bottom of Base Plate to Bottom of Inside Cord of Rafter in the Building Center – Not Including Foundation Height. Submit alternate configurations for considerations and approval before bidding.

9. End Wall - #1 Minimum Requirements

i. Solid Fabric End Wall

1. Provide Three aluminum 3'x3' Vents with framing
- End Wall - #2 Open

B. Minimum Fabric Specifications for Cover Building Including End Walls

1. Covers / Membranes / Fabrics are not Structural Components

i. No Tensioned Membrane Analysis Used in Cover Building Design

1. Cover shall not be designed to Function as a Structural Member
2. Structural Framework Maintains Integrity Regardless of Covers

2. Design Temperature Range –40 to +150 degrees Fahrenheit

3. Fabric Cover Retention Shall Utilize a Bag style cover. Include a main cover with primary pull pocket above the base plate with tensioning system, plus an apron with pocket extending below the base plate 18" with a 1" diameter galvanized chain link fence top rail and independent winches and straps.

4. 12 oz/yd², +/- 5%, High Density Polyethylene (HDPE) Tapes, Coated on Two Sides with Low Density Polyethylene (LDPE) – Manufacturers standard colors

5. Approved Suppliers for 12 oz/yd² Fabrics for Cover Buildings

i. Fabrene Inc, Industrial Synthetic Fabric – Non Flame Retardant

ii. Intertape, RU88X-6 400 – Non Flame Retardant

iii. Engineered Coated Products – Non Flame Retardant

1. Above Products are Registered Trademarks of the Respective Companies
2. Colors May Vary Slightly from Supplier to Supplier
3. Equivalent Information Supplied from Original Manufacturer of Fabric

6. Warranty for 12 oz/yd² Fabrics for Cover Buildings

i. Length of Cover Warranty Period

1. 15 Year Pro-Rated on Standard 12 oz/yd² Fabrics, Both Main and End

Wall

C. Minimum Coating Specifications for Cover Building Framework

1. **Hot Dipped Galvanized** to ASTM A123 or 3.9 mils of Zinc On All Manufactured Structural Building Components.
 - i. All Manufactured Steel Component Surfaces (Exterior and Interior) are to have a Minimum of 2.2 oz./ft² (+/- 5%) Continuous
 1. Zinc Coating to be Applied after Steel Framework Fabrication
 2. Zinc Coating Includes Exterior Welds and Interior Weld Burns
 3. 1oz. of zinc/ft² (320g/m²) of surface = to 1.7mil (43um)
 4. Bolts, Nuts, and Washers are to be Hot Dipped Galvanized to ASTM A153
 5. Warranty of Hot Dipped Galvanized Manufactured Components
 - i. 15 Years Pro-Rated – See Section D-6
 6. In-Line Pre-Galvanized Mechanical Steel Tubing as Steel Corrosion Protection. Will be Allowed for Non- Structural Members Only

D. Foundation Requirements

1. **8' Concrete Foundation wall is existing. Wall is 8" thick .**
 - i. Manufacturer to provide Anchor Bolt Plan with Truss Center and Base Plate
 - ii. Stamped drawings to provide building reaction at all base plate locations
 - iii. Contractor will provide stamped drawings for any modifications to the existing foundation required to accommodate a different anchor bolt layout.
 - iv. Contractor to provide and install new anchor bolts if required.

F Lighting –Will be added by owner at a later date

G. Fabric Cover Building Maintenance

1. Manufacturer to Provide a Schedule of Maintenance
 - i. Recommended Maintenance Program Intervals
 - ii. General Care Instructions
 - iii. Maintenance Requirements for Warranty Coverage

E. Quality Control

1. **Cover Building Systems with Similar Characteristics that Deviate from the Above Specifications May be Considered if**
 - i. Deviations Do Not Change the Design Concept, Intended Performance, or Overall Scope of the Cover Building Project
 - ii. All Deviations that Do Exist in the Cover Building System Are Submitted in Writing Before Bidding for Consideration of Equal
 1. Burden of Proof for Deviations Acceptance is on the Petitioner
 - a. Information & Materials provided for Burden of Proof Shall be Provided

from the Original Manufacturer of the Products in Question.

iii. All Deviations in the Cover Building System Are to be Approved as Equal in Writing Prior to Bid for Bid Consideration

2. **Cover Building Systems with Deviation from Specifications Will Not be Considered Unless All Written Approval for all Deviation has been Issued Prior to Bid**

F. Minimum Requirements for Cover Building Installer

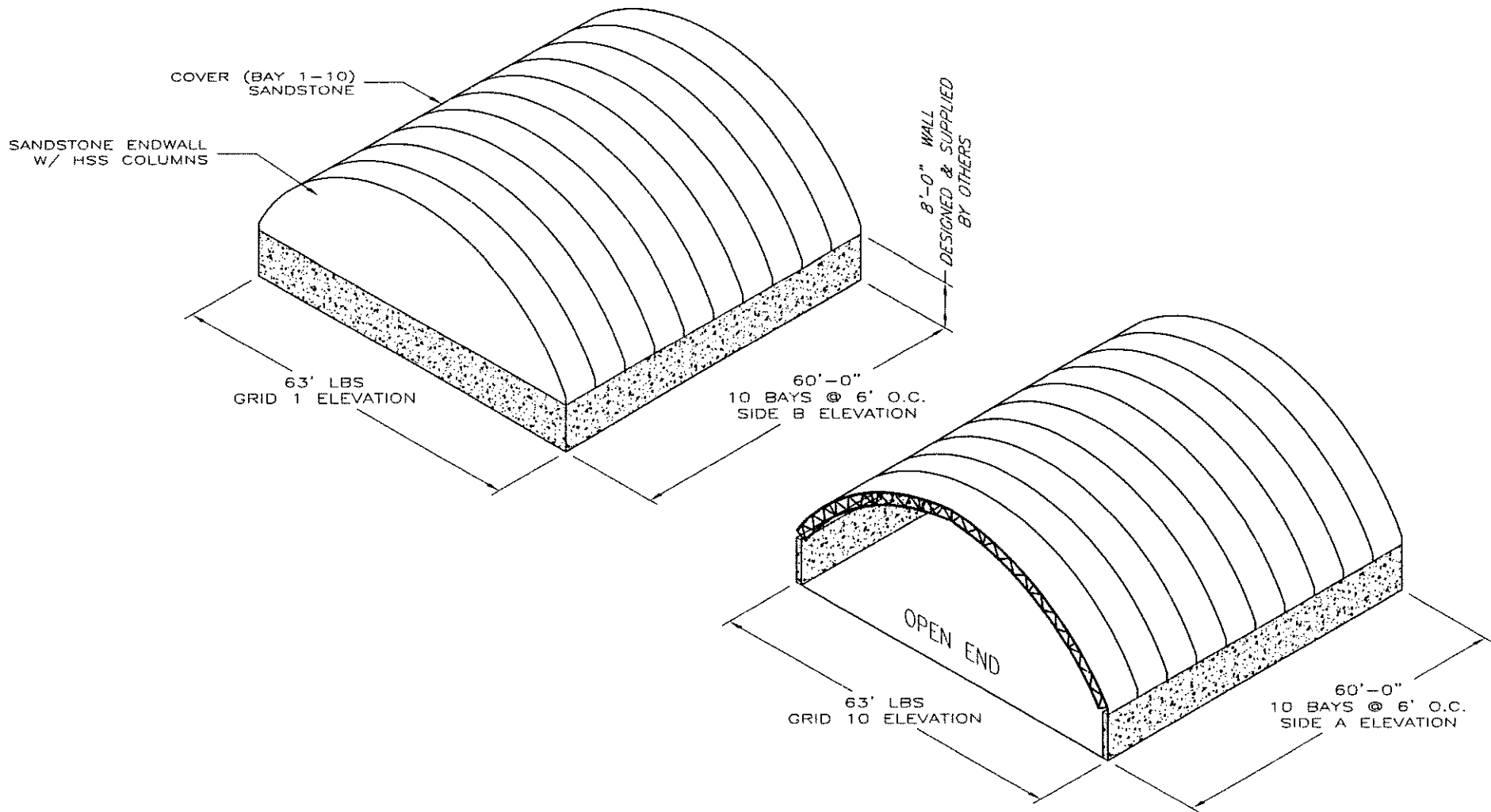
1. Pre-Installation Meeting with Owner, General Contractor, Building Installer, Building Supplier, other relevant parties

i. Meet Prior to Work Proceeding

ii. Scope of Work to be Performed, Time Tables, and Chain of Communication

iii. Safety is a Required Point of Discussion

2. Authorized by the manufacturer



PLEASE REFER TO FOLLOWING DRAWINGS FOR EXACT BUILDING DIMENSIONS

REV.	DESCRIPTION	BY	DATE
A	ISSUED FOR APPROVAL	DB	15 MAY 06

DEALER: LOST CABIN CONSTRUCTORS, INC RAPID CITY, SD	
CUSTOMER: STATE OF SOUTH DAKOTA PIERRE, SD	
PROJECT: EQUIP. MACH. STORAGE BISON, SD	
PROJECT ID:	ORDER ID: 75014

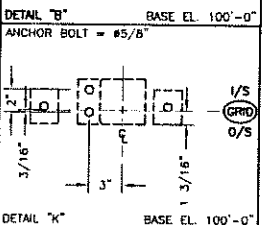
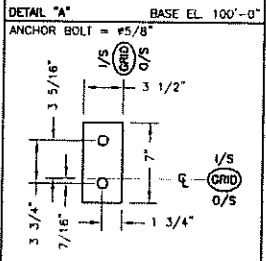
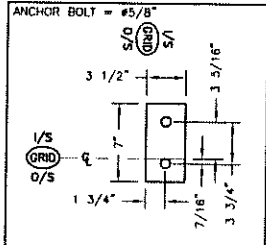
THIS DRAWING IS PROPERTY OF COVER-ALL BUILDING SYSTEMS INC. ANY REPRODUCTION IN WHOLE OR IN PART WITHOUT THE EXPRESSED WRITTEN CONSENT OF COVER-ALL BUILDING SYSTEMS INC. IS PROHIBITED.	
DRAWN BY: D BEC	DATE: 15 MAY 06
CHECKED BY: CL	DATE: 24 May 06
SCALE: N.T.S.	

COVER-ALL

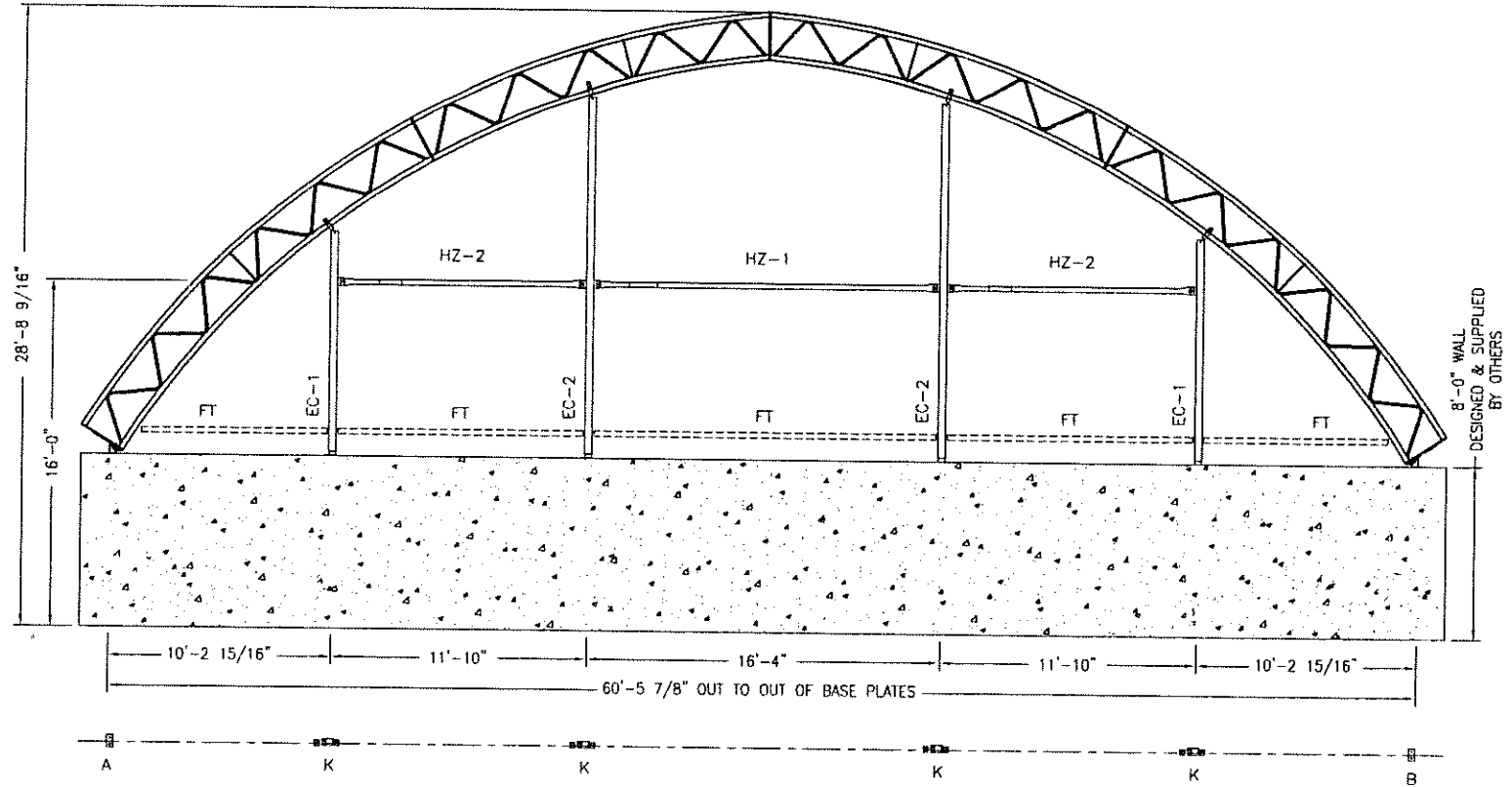
BUILDING SYSTEMS

3415 WAKUSKEWIN RD, SASKATOON, SASKATCHEWAN, S7P 1A4
 PH: 1-306-657-2886 FAX: 1-306-657-2717
 WEBSITE: www.coverall.net

TITLE: PROJECT LAYOUT	SHEET FB02	REVISION A
--------------------------	---------------	---------------



MARK#	COMPONENTS	WEIGHT
EC-2	HSS4x4x11GA-198	104.57
EC-1	HSS4x4x11GA-122	64.43
HZ-1	330550 + 32000065	41.32
HZ-2	330550 + 32000050	29.56
FT	2" x 3" FASTENING TUBE (FIELD CUT)	



REV.	DESCRIPTION	BY	DATE
A	ISSUED FOR APPROVAL	DB	15 MAY 06

DEALER: LOST CABIN CONSTRUCTORS, INC
RAPID CITY, SD

CUSTOMER: STATE OF SOUTH DAKOTA
PIERRE, SD

PROJECT: EQUIP. MACH. STORAGE
BISON, SD

PROJECT ID: ORDER ID:
75014

THIS DRAWING IS PROPERTY OF COVER-ALL BUILDING SYSTEMS INC. ANY REPRODUCTION IN WHOLE OR IN PART WITHOUT THE EXPRESSED WRITTEN CONSENT OF COVER-ALL BUILDING SYSTEMS INC. IS PROHIBITED.

DRAWN BY: D BEC DATE: 15 MAY 06

CHECKED BY: *LC* DATE: *24 MAY 06*

SCALE: N.T.S.

3615 WANUSHEWYN RD., SASKATOON, SASKATCHEWAN, S7P 1A4
PH: 1-306-657-2889 FAX: 1-306-657-2717
WEBSITE: www.coverall.net

TITLE: ENDWALL - GRIDLINE 1	SHEET: FB07	REVISION: A
-----------------------------	-------------	-------------







