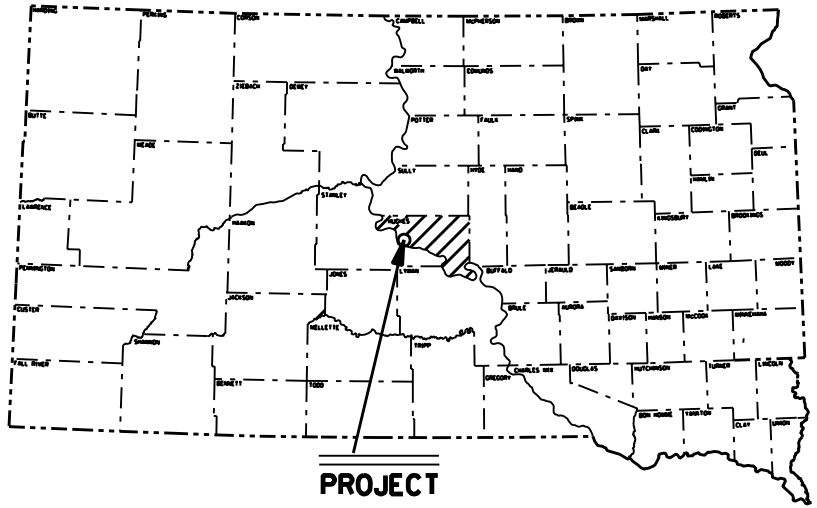


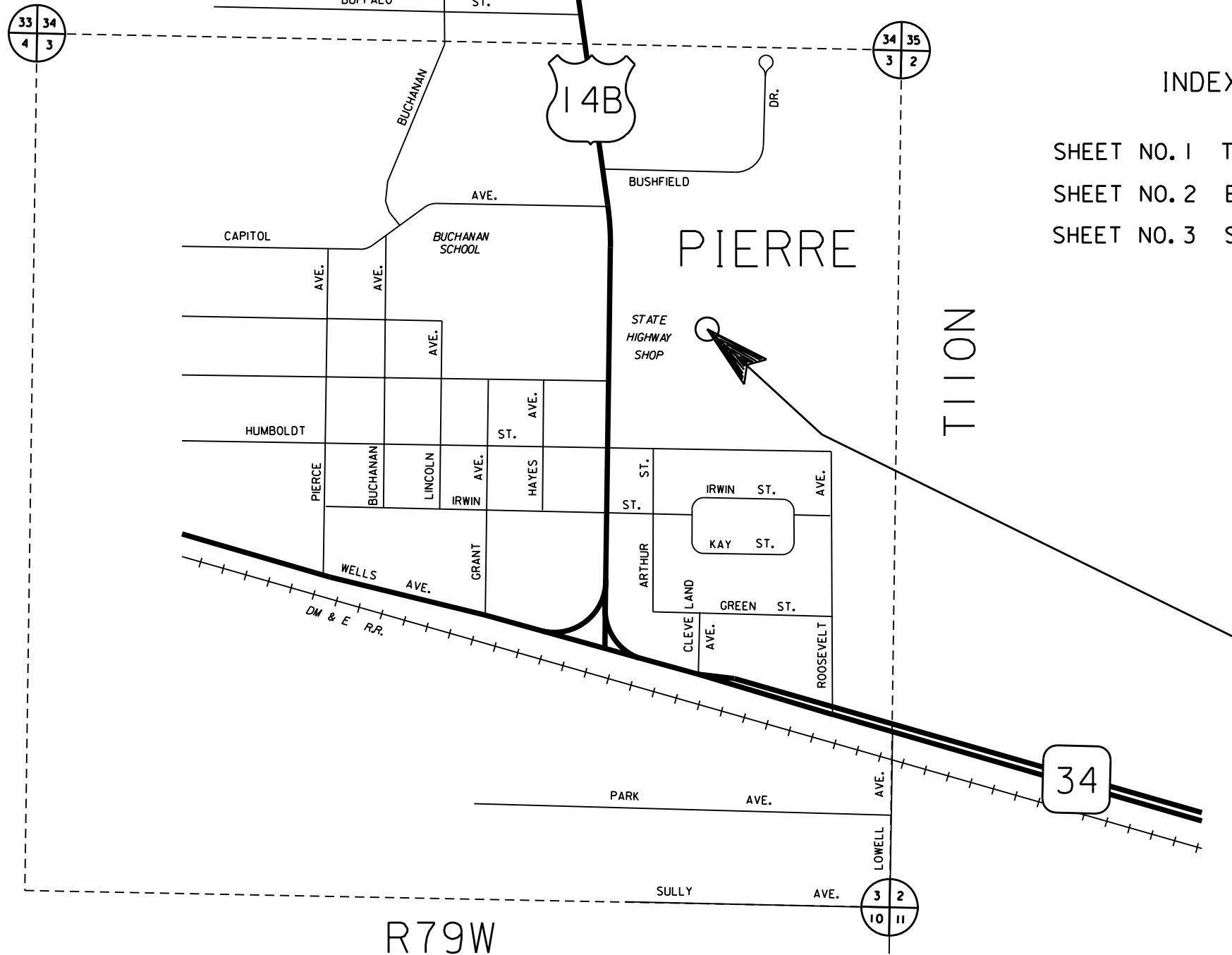
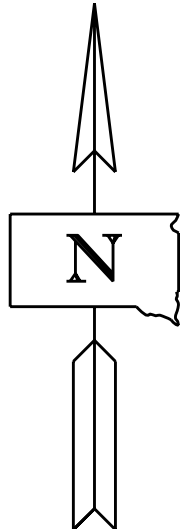
| | | | |
|----------|---------|-----------|--------------|
| STATE OF | PROJECT | SHEET NO. | TOTAL SHEETS |
| S.D. | 3541S | 1 | 3 |

STATE OF SOUTH DAKOTA
 DEPARTMENT OF TRANSPORTATION
 PLANS FOR PROPOSED

PROJECT NO. 3541S
SDDOT PIERRE MAINTENANCE YARD
HUGHES COUNTY
DEICING SAND STOCKPILE
PCN 11AC



PROJECT



INDEX OF SHEETS

- SHEET NO. 1 TITLE SHEET
- SHEET NO. 2 ESTIMATE OF QUANTITIES & NOTES
- SHEET NO. 3 STANDARD PLATES

STOCKPILE NO. 3541S
 TO BE LOCATED IN THE SDDOT
 PIERRE MAINTENANCE YARD
 CITY OF PIERRE HUGHES COUNTY
 (NE1/4 SEC3 T11ON R79W)

NO SCALE

R79W

| | | | | |
|--|----------|---------|-----------|--------------|
| | STATE OF | PROJECT | SHEET NO. | TOTAL SHEETS |
| | S.D. | 3541S | 2 | 3 |

ESTIMATE OF QUANTITIES

| Bid Item Number | Item | Quantity | Unit |
|-----------------|------------------|----------|------|
| 009E0010 | Mobilization | Lump Sum | LS |
| 740E0800 | Sand for Deicing | 6,000.0 | Ton |

SPECIFICATIONS

Standard Specifications for Roads and Bridges, 2004 Edition, and Required Provisions, Supplemental Specifications and/or Special Provisions as included in the Proposal.

DEICING SAND

Aggregate for the deicing sand shall conform to the following gradation requirements:

| | |
|--------------------------|---------|
| Passing a 3/8 Inch Sieve | 100% |
| Passing a No. 4 Sieve | 90-100% |
| Passing a No. 8 Sieve | 60-90% |
| Passing a No. 40 Sieve | 0-45% |
| Passing a No. 200 Sieve | 0-10.0% |

The Plasticity Index shall not exceed three (3).

The shale content, or other particles of low specific gravity (less than 1.95%) passing the No. 4 sieve, shall not exceed 4.5%.

Deicing sand material may be crushed or uncrushed.

Prior to hauling, the deicing sand shall be screened to minimize segregation, eliminate oversize material, and effectively break up or discard any material that is bonded into chunks.

Deicing sand shall be furnished by the Contractor.

The Contractor shall stockpile all 6000 tons of the deicing sand at the SDDOT Pierre Maintenance Yard site prior to January 30, 2009.

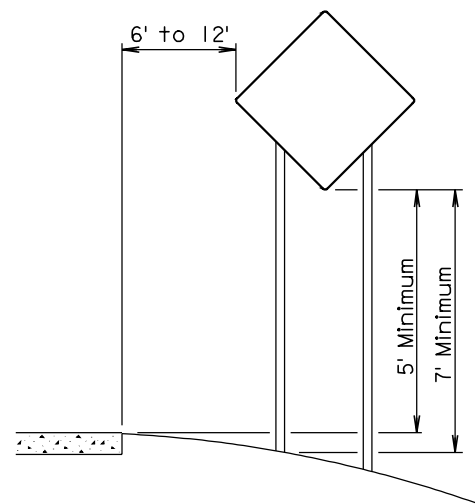
The deicing sand stockpile shall be constructed as directed by the SDDOT Pierre Highway Maintenance Supervisor (605-773-5589). The Contractor is required to contact the Pierre Area Engineer at 605-773-5294 two weeks prior to hauling the deicing sand to the Pierre Maintenance Yard.

The contract unit price bid per ton for Sand for Deicing shall include all costs for furnishing and stockpiling the deicing sand at the required location.

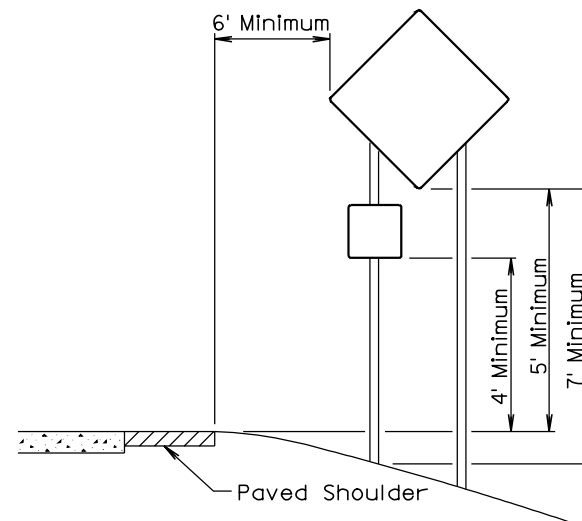
MAINTENANCE OF TRAFFIC

The Contractor shall furnish and install 48" x 48" TRUCK CROSSING signs (W8-6) that are to be placed on State or County highways, or other well traveled roadways. The signs shall be located a minimum of 550' in advance of intersections and approaches to the highway where the haul route crosses, or turns onto or from the highway. The TRUCK CROSSING signs shall be installed for both directions of traffic travel. The exact number and location of the signs will be determined based on the pit location and haul road approved for use.

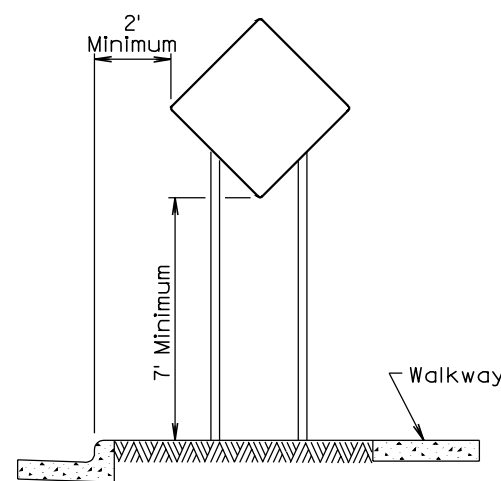
The TRUCK CROSSING signs shall be displayed at all times when the haul vehicles are hauling material from the pit to the stockpile site. During non-working hours, the signs shall be covered or removed from view. Hinged signs may be used. There will be no direct payment for the TRUCK CROSSING signs. All costs for furnishing, installing, maintaining, and removing the signs shall be incidental to the various contract items.



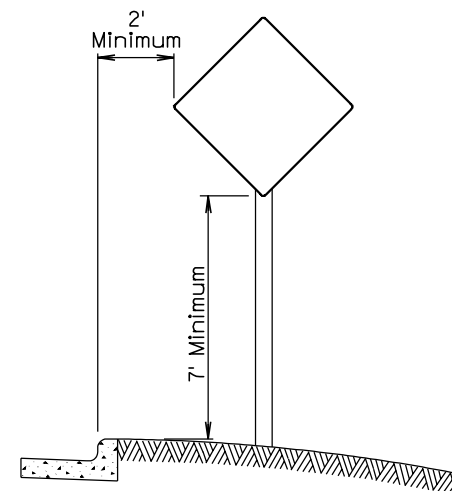
RURAL DISTRICT



RURAL DISTRICT WITH
SUPPLEMENTAL PLATE



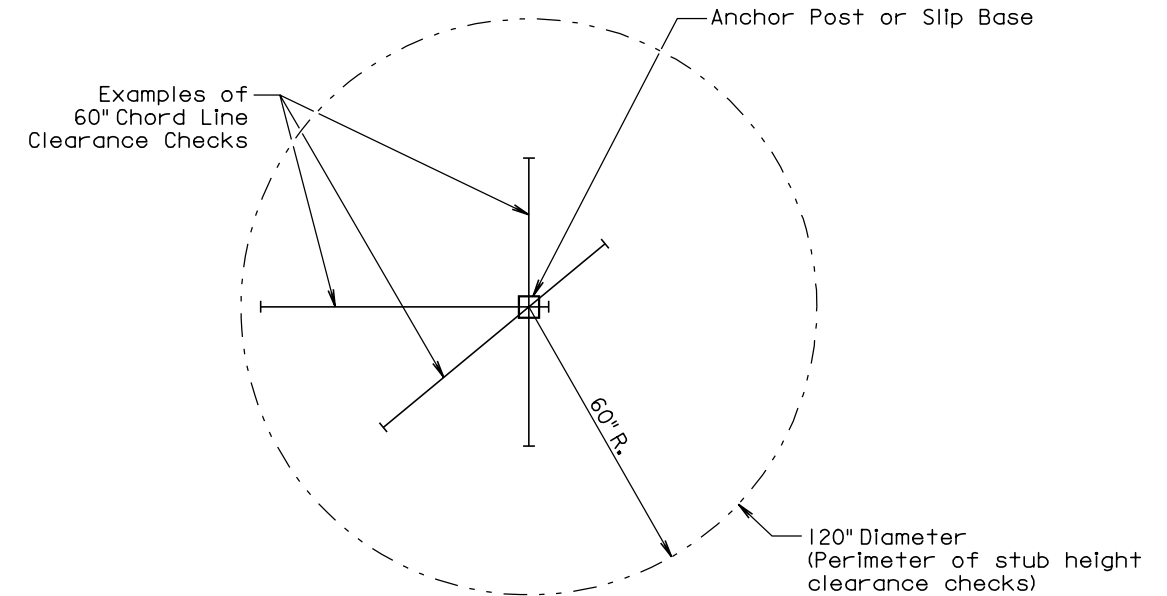
URBAN DISTRICT



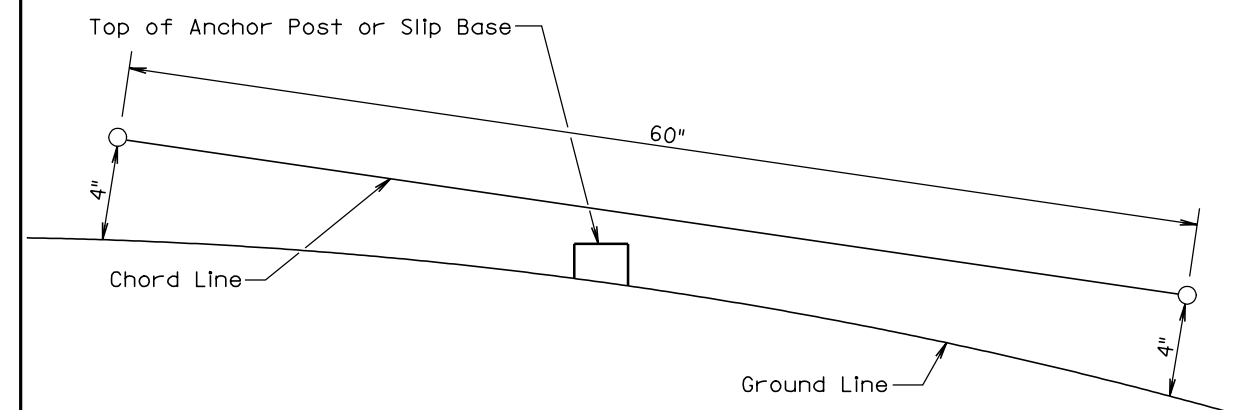
URBAN DISTRICT

December 23, 2003

| | | | |
|-------------------------------|-----------------------|---|------------------------|
| Published Date: 3rd Qtr. 2008 | S D D O T | BREAKAWAY SIGN SUPPORTS (Typical Construction Signing) | PLATE NUMBER 634.85 |
| | | | Sheet 1 of 1 |



PLAN VIEW
(Examples of stub height clearance checks)



ELEVATION VIEW

GENERAL NOTES:

The top of anchor posts and slip bases SHALL NOT extend above a 60" chord line within a 120" diameter circle around the post with ends 4" above the ground.

At locations where there is curb and gutter adjacent to the breakaway sign support, the stub height shall be a maximum of 4" above the ground line at the localized area adjacent to the breakaway support stub.

The 4" stub height clearance is not necessary for U-channel lap splices where the support is designed to yield (bend) at the base.

July 1, 2005

| | | | |
|-------------------------------|-----------------------|----------------------------------|------------------------|
| Published Date: 3rd Qtr. 2008 | S D D O T | BREAKAWAY SUPPORT STUB CLEARANCE | PLATE NUMBER 634.99 |
| | | | Sheet 1 of 1 |