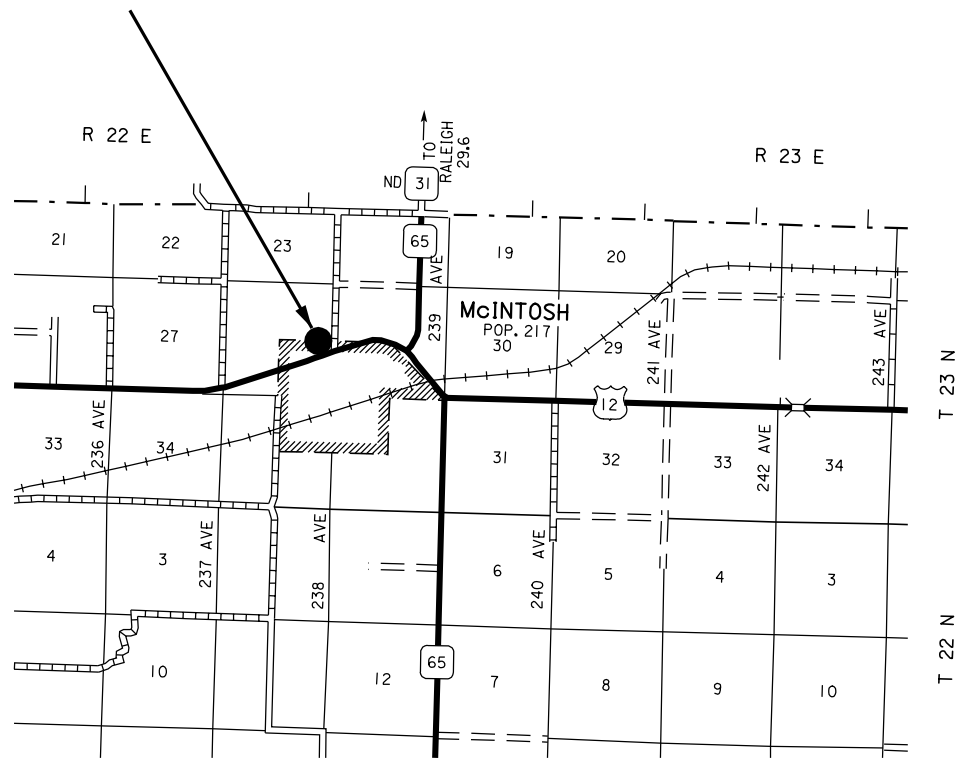


410C233  
CORSON COUNTY  
ASPHALT CONCRETE COMPOSITE  
PCN i2BW



**McIntosh Maintenance Yard**  
**Located in the SE1/4 SEC 26 T23N R22E**  
**Corson County**



## **ESTIMATE OF QUANTITIES**

<b>BID ITEM NUMBER</b>	<b>ITEM</b>	<b>QUANTITY</b>	<b>UNIT</b>
009E0010	Mobilization	Lump Sum	LS
280E0010	Process In Place Surfacing	6284	SqYd
320E1200	Asphalt Concrete Composite	1046.0	Ton

## **SPECIFICATIONS**

South Dakota Department of Transportation Standard Specifications for Roads and Bridges, 2004 Edition and required Provisions, Supplemental Specifications and/or Special Provisions as included in the Proposal will apply to this work.

### **PROCESS IN PLACE SURFACING**

The area shown on the yard layout will need to be processed to a depth of 6 inches and shaped to drain toward the US 12 ROW. The gravel must be shaped 3 inches below the existing concrete so the finished asphalt matches the existing concrete elevation.

The density requirement for the Process In Place Material shall be to the satisfaction of the Engineer.

### **WATER FOR COMPACTION**

The moisture content for compaction of the Process In Place material shall be approximately optimum moisture for the material. Water shall be incidental to the bid item Process In Place Surfacing. No separate payment shall be made for water.

### **ASPHALT CONCRETE COMPOSITE**

The Contractor is required to notify the Area Engineer at least two weeks prior to beginning paving.

The Contractor shall produce an estimated 1046 tons of Contractor Furnished Asphalt Concrete. The Asphalt Concrete Composite shall be placed by the contractor at the McIntosh Maintenance Yard as shown on the attached layout. The asphalt concrete shall be placed in 2 – 1.5” lifts. For informational purposes only it is estimated that 1.3 ton of SS-1h or CSS-1h will be required for tack between lifts.

Mineral aggregate for the Contractor Furnished Asphalt Concrete shall conform to the requirements of the Standard Specifications for Class E, Type 1; Class G, Type 1; Asphalt Concrete Class Q low traffic volume; Asphalt Concrete Class Q medium traffic volume, Asphalt Concrete Class Q high traffic volume or Asphalt Concrete Superpave 12.5 mm specifications.

The Contractor shall provide a Job-Mix Formula to the Bituminous Engineer with supporting mix design data prior to production.

The Engineer may accept the mixture on the basis of the certificates of compliance and visual inspection or may test the mixture for specification requirements.

## **ASPHALT CONCRETE COMPOSITE**

The asphalt binder used in the mixture shall be PG 58-28, PG 64-22, PG 64-28, or PG 64-34 Asphalt Binder.

The asphalt binder content may be adjusted by the Engineer.

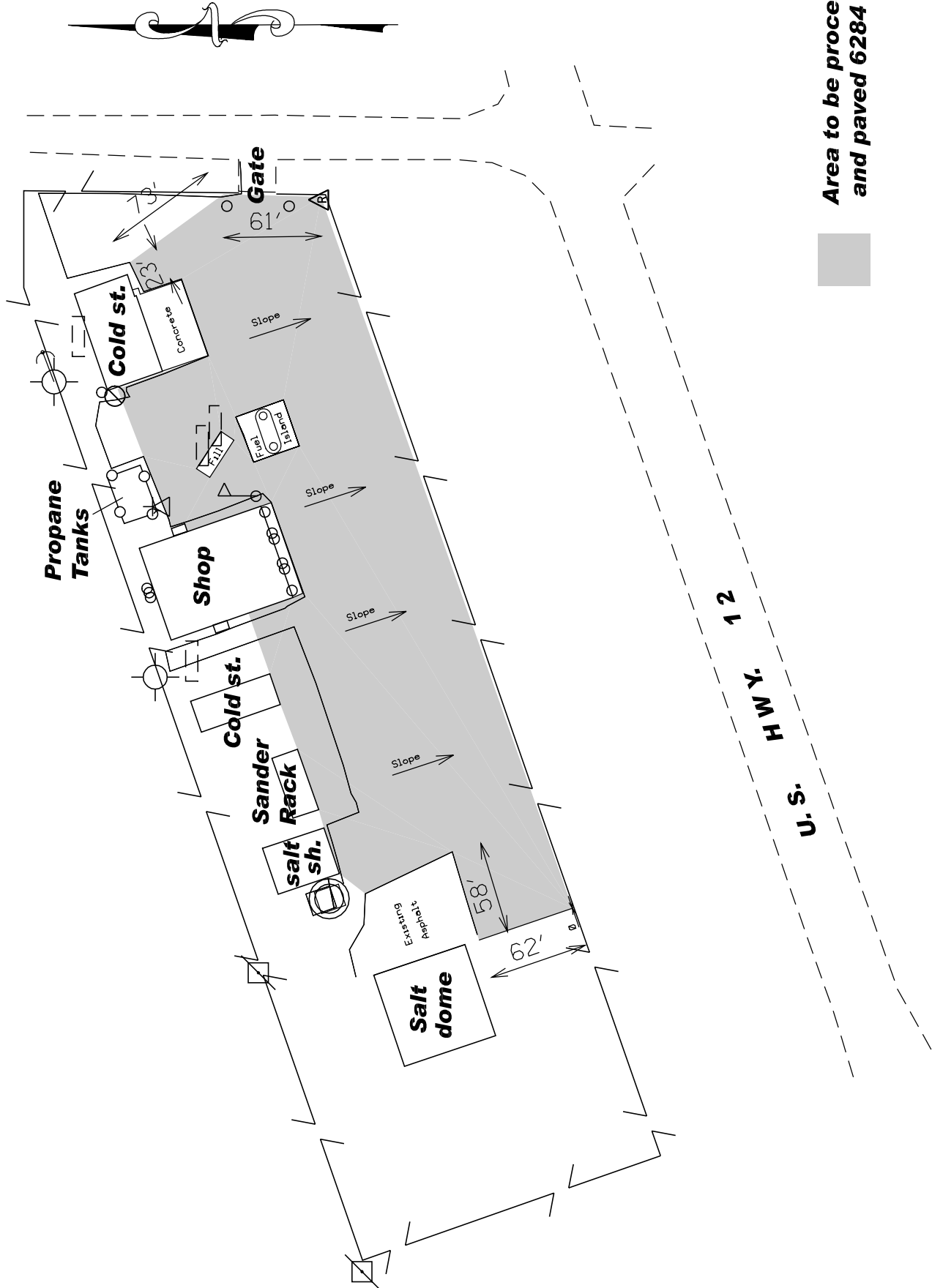
All costs involved in producing the asphalt concrete, hauling, placing and tacking will be measured and paid for at the contract unit bid price for Asphalt Concrete Composite and shall include mineral aggregate, asphalt binder, hydrated lime if required, equipment, labor, and incidentals necessary to complete the work.

The requirement for a paver feeder from section 320.3F is waived.

## **MAINTENANCE OF TRAFFIC**

The Contractor shall furnish and install 48" x 48" TRUCK CROSSING signs (W8-6) that are to be placed on State or County highways, or other well traveled roadways. The signs shall be located a minimum of 550' in advance of intersections and approaches to the highway where the haul route crosses, or turns onto or from the highway. The TRUCK CROSSING signs shall be installed for both directions of traffic travel. The exact number and location of the signs will be determined based on the pit location and haul road approved for use.

The TRUCK CROSSING signs shall be displayed at all times when the haul vehicles are hauling material from the pit to the stockpile site. During non-working hours, the signs shall be covered or removed from view. Hinged signs may be used. There will be no direct payment for the TRUCK CROSSING signs. All costs for furnishing, installing, maintaining, and removing the signs shall be incidental to the various contract items.



Area to be processed  
and paved 6284 S.Y.