

STATE OF SOUTH DAKOTA
DEPARTMENT OF TRANSPORTATION

PLANS FOR PROPOSED
PROJECT 0009-271
MINNEHAHA COUNTY

RESURFACE PARKING LOT

PCN I7EE

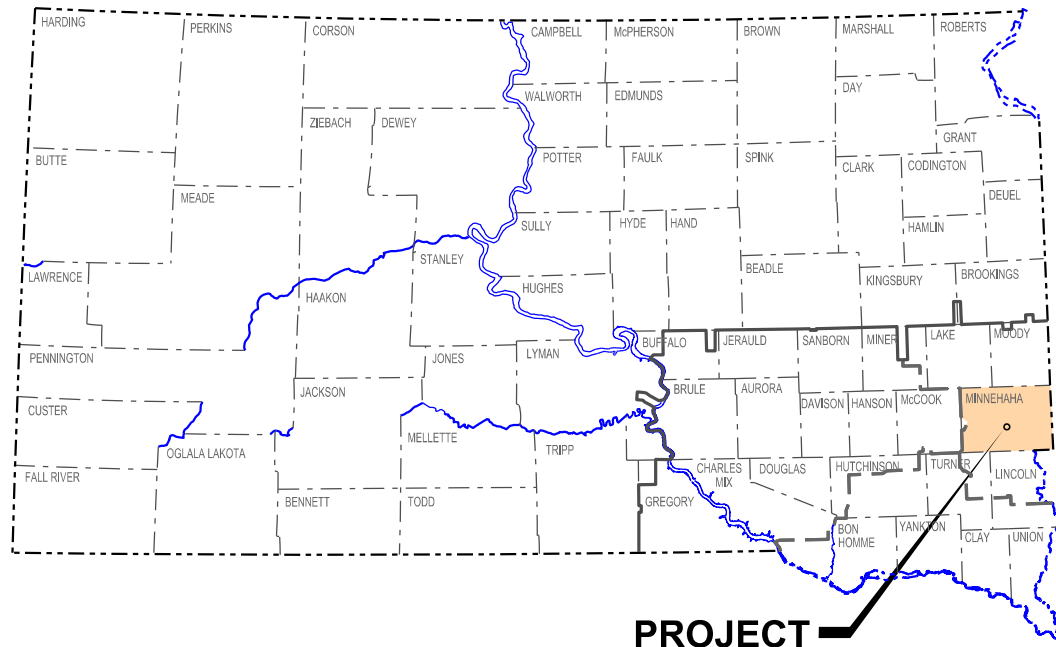
STATE OF SOUTH DAKOTA	PROJECT	SHEET	TOTAL SHEETS
	0009-271	1	7

Plotting Date: 02/22/24

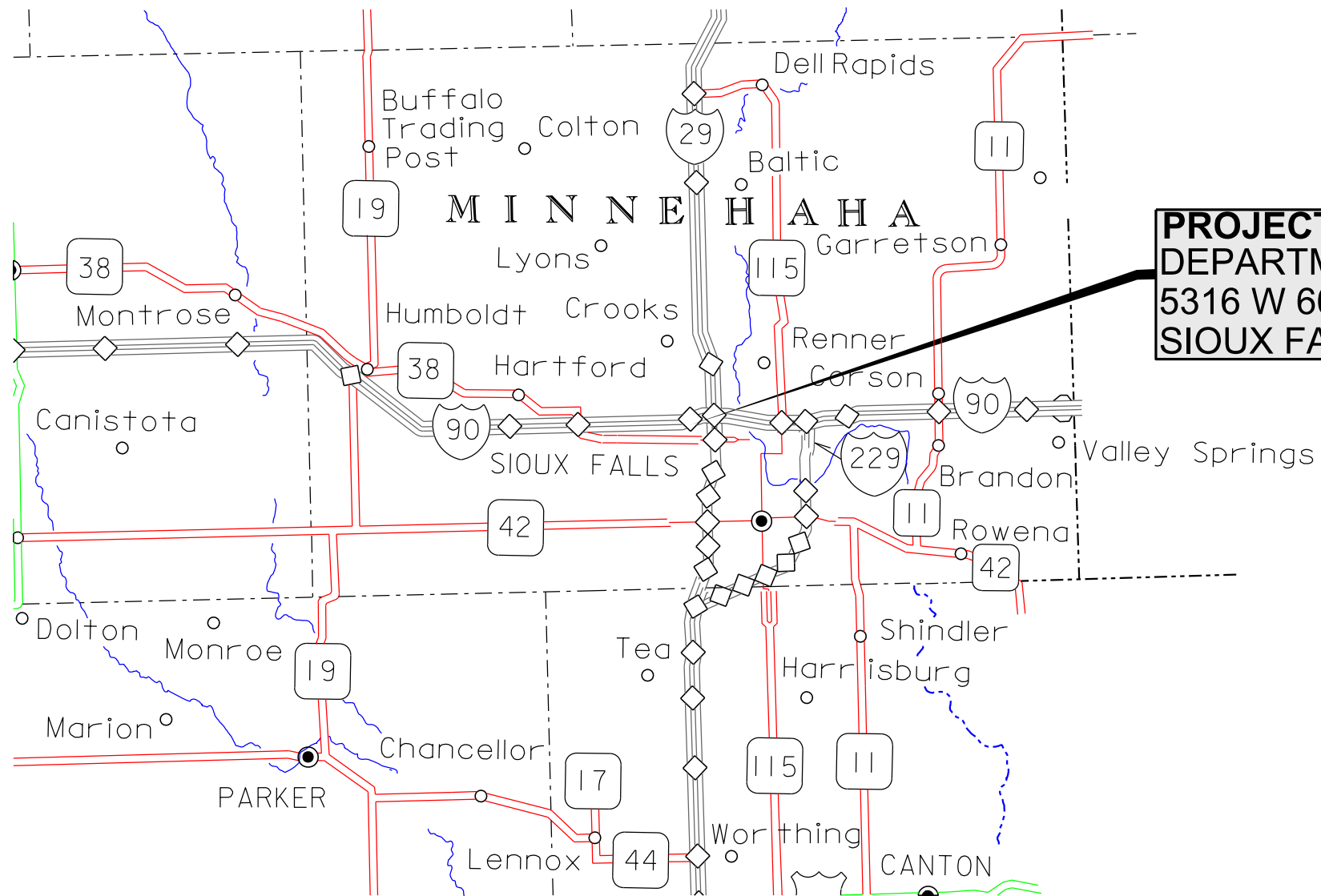
INDEX OF SHEETS

Page 1	Title Sheet
Page 2	Site Location
Page 3	Bid Item Table and Surfacing Notes
Page 4	Environmental Commitments
Page 5	Cold Milling Layout
Page 6	Surfacing Layout
Page 7	Parking Space Paint Layout

PLOT SCALE - 1"=70'



PROJECT



PROJECT
DEPARTMENT OF TRANSPORTATION
5316 W 60th ST N
SIOUX FALLS

STORM WATER PERMIT
(None required)

PLOTTED FROM - TRSF12147

FILE - ...I7EE.DGN

STATE OF SOUTH DAKOTA	PROJECT 0009-271	SHEET 2	TOTAL SHEETS 7
-----------------------	---------------------	------------	-------------------

Plotting Date: 02/22/24

Site Location



South Dakota Department of Transportation
5316 W 60th St N, Sioux Falls SD 57107

Project Limits

PLOT SCALE - 1:173.706

PLOTTED FROM - TRSF12147

PLOT NAME - 3

FILE - ... \17EE.DGN

BID ITEM NUMBER	ITEM	QUANTITY	UNIT
009E0010	Mobilization	Lump Sum	LS
120E0100	Unclassified Excavation, Digouts	25	CuYd
260E1090	Base Course, State Furnished	50.0	Ton
320E1200	Asphalt Concrete Composite	1,783.0	Ton
332E0010	Cold Milling Asphalt Concrete	15,852	SqYd
633E1222	High Build Waterborne Pavement Marking Paint, 4" Yellow	2,456	Ft
633E1288	High Build Waterborne Pavement Marking Paint, Symbol	4	Each

SPECIFICATIONS

Standard Specifications for Roads and Bridges, 2015 Edition and Required Provisions, Supplemental Specifications, and Special Provisions as included in the Proposal.

UNCLASSIFIED EXCAVATION, DIGOUTS

The locations and extent of digout areas will be determined in the field by the Engineer. The backfilling material for the digouts will be Base Course, Salvaged.

Included in the Estimate of Quantities are 25 cubic yards of Unclassified Excavation, Digouts

SURFACING THICKNESS DIMENSIONS

The plans shown spread rates will be applied even though the thickness may vary from that shown on the plans.

At those locations where material must be placed to achieve a required elevation, the depth/quantity may be varied to achieve the required elevation.

COLD MILLING ASPHALT CONCRETE

Cold milling will be done according to the Cold Milling Layout.

Cold milling is estimated to produce 1665 tons of cold milled asphalt concrete material.

The salvaged asphalt concrete material will become the property of the Contractor for disposal.

COLD MILLING TAPERS

In order to construct the new surfacing flush with the asphalt concrete, it will be necessary to taper the depth of milling according to the details for Cold Milling Tapers.

Cost for this work will be included in the contract unit price per square yard for Cold Milling Asphalt Concrete.

ASPHALT CONCRETE COMPOSITE

MC-70 Asphalt for Prime for Asphalt Concrete Composite will not be required.

PG 58-34 binder will be required for Asphalt Concrete Composite.

Asphalt for tack SS-1h or CSS-1h will be applied prior to each lift of Asphalt Concrete Composite. Asphalt for tack will be applied at a rate of 0.09 gallons per square yard on existing pavement or milled asphalt concrete surfaces and at a rate of 0.06 gallons per square yard on primed base course or new asphalt concrete pavement. The Asphalt for tack will be applied for the full width of the bottom layer of Asphalt Concrete Composite plus one-half foot additional on the outside shoulder.

Asphalt concrete surfacing will start with 10 working days of the beginning of cold milling.

FLUSH SEAL

Application of the flush seal will be completed within 5 working days following completion of the asphalt concrete resurfacing.

Sand will not be required during the flush seal process.

HIGH BUILD WATERBORNE PAVEMENT MARKING PAINT

The application of permanent pavement marking will begin no sooner than 7 calendar days following completion flush seal. Application of permanent pavement marking will be completed within 14 calendar days following completion of the flush seal.

All materials will be applied as per manufacturer's recommendations. High build waterborne pavement marking paint will conform to the supplemental specifications for Section 980.1 B.

Reflective media will consist of glass beads.

High Build Waterborne Pavement Marking Paint applied after October 15 must be formulated as cold-weather waterborne paint. Cold weather waterborne paint will meet the requirements of Section 980.1 C.

Solid 4" line = 27.8 Gals/Mile

Glass Beads = 8.0 Lbs/Gal.

Included in the estimate of quantities is an additional 340 feet of High Build Waterborne Pavement Marking Paint 4" Yellow for painting of luminaire footings extending from the ground.

All cost for materials, labor and equipment necessary to furnish and install the pavement markings will be incidental to the contract unit price for the respective High Build Waterborne Pavement Marking Paint items.

PAVEMENT MARKING SYMBOL FOR ACCESSIBLE PARKING SPACES

The International Symbol of Accessibility Parking Space Marking with blue background and white border, meeting the minimum dimensions shown in Part 3 of the MUTCD will be placed in accessible parking spaces having the required regulatory signing. The blue background and white border symbol will be required for all accessible parking spaces for persons with disabilities.

Traffic paint will be furnished in white and blue. The blue paint will meet the color specification limits and luminance factors listed in the table below for Daytime Color Specification Limits and Luminance Factors for Pavement Marking Material with CIE 2o Standard Observer and 45/0 (0/45) Geometry and CIE Standard Illuminant D65 when tested in accordance with ASTM E1347 or ASTM E1349.

Color	Chromaticity Coordinates (corner points)								Min. Luminance Factor (Y%)
	X	Y	X	Y	X	Y	X	Y	
Blue	0.105	0.1	0.22	0.18	0.2	0.26	0.06	0.22	5

All costs for furnishing and installing the International Symbol of Accessibility Parking Space Marking will be incidental to the contract unit price per each for "High Build Pavement Marking Paint, Symbol".

BASE COURSE, STATE FURNISHED

Base Course, State Furnished estimated quantity of 50 tons of granular material for the purpose of backfilling digout areas will be obtained from the stockpile located at the Sioux Falls DOT complex (5316 W 60th St N # A, Sioux Falls, SD 57107).

No gradation testing will be required for the Base Course, State Furnished material.

STATE OF SOUTH DAKOTA	PROJECT	SHEET	TOTAL SHEETS
	0009-271	4	7

ENVIRONMENTAL COMMITMENTS

The SDDOT is committed to protecting the environment and uses Environmental Commitments as a communication tool for the Engineer and Contractor to ensure that attention is given to avoid, minimize, and/or mitigate an environmental impact. Environmental commitments to various agencies and the public have been made to secure approval of this project. An agency with permitting authority can delay a project if identified environmental impacts have not been adequately addressed. Unless otherwise designated, the Contractor's primary contact regarding matters associated with these commitments will be the Project Engineer. During construction, the Project Engineer will verify that the Contractor has met Environmental Commitment requirements. These environmental commitments are not subject to change without prior written approval from the SDDOT Environmental Office.

Additional guidance on SDDOT's Environmental Commitments can be accessed through the Environmental Procedures Manual found at: <https://dot.sd.gov/media/documents/EnvironmentalProceduresManual.pdf>

For questions regarding change orders in the field that may have an effect on an Environmental Commitment, the Project Engineer will contact the Environmental Engineer at 605-773-3180 or 605-773-4336 to determine whether an environmental analysis and/or resource agency coordination is necessary.

Once construction is complete, the Project Engineer will review all environmental commitments for the project and document their completion.

COMMITMENT E: STORM WATER

Construction activities constitute less than 1 acre of disturbance.

Action Taken/Required:

At a minimum and regardless of project size, appropriate erosion and sediment control measures must be installed to control the discharge of pollutants from the construction site.

COMMITMENT H: WASTE DISPOSAL SITE

The Contractor will furnish a site(s) for the disposal of construction and/or demolition debris generated by this project.

Action Taken/Required:

The waste disposal site(s) will be managed and reclaimed in accordance with the following from the General Permit for Construction/Demolition Debris Disposal Under the South Dakota Waste Management Program issued by the Department of Agriculture and Natural Resources.

The waste disposal site(s) will not be located in a wetland, within 200 feet of surface water, or in an area that adversely affects wildlife, recreation, aesthetic value of an area, or any threatened or endangered species, as approved by the Environmental Office and the Project Engineer.

If the waste disposal site(s) is located such that it is within view of any ROW, the following additional requirements will apply:

1. Construction and/or demolition debris consisting of concrete, asphalt concrete, or other similar materials will be buried in a trench separate from wood debris. The final cover over the construction and/or demolition debris will consist of a minimum of 1 foot of soil capable of supporting vegetation. Waste disposal sites provided outside of the Public ROW will be seeded in accordance with Natural Resources Conservation Service recommendations. The seeding recommendations may be obtained through the appropriate County NRCS Office. The Contractor will control the access to waste disposal sites not within the Public ROW with fences, gates, and placement of a sign or signs at the entrance to the site stating, "No Dumping Allowed".

2. Concrete and asphalt concrete debris may be stockpiled within view of the ROW for a period not to exceed the duration of the project. Prior to project completion, the waste will be removed from view of the ROW or buried, and the waste disposal site reclaimed as noted above.

The above requirements will not apply to waste disposal sites that are covered by an individual solid waste permit as specified in SDCL 34A-6-58, SDCL 34A-6-1.13, and ARSD 74:27:10:06.

Failure to comply with the requirements stated above may result in civil penalties in accordance with South Dakota Solid Waste Law, SDCL 34A-6-1.31.

All costs associated with furnishing waste disposal site(s), disposing of waste, maintaining control of access (fence, gates, and signs), and reclamation of the waste disposal site(s) will be incidental to the various contract items.

COMMITMENT I: HISTORIC PRESERVATION OFFICE CLEARANCES

State Historic Preservation Office (SHPO or THPO) concurrence has not been obtained for this project.

Action Taken/Required:

All earth disturbing activities not designated within the plans require a cultural resource review prior to scheduling the pre-construction meeting. This work includes but is not limited to: Contractor furnished material sources, material processing sites, stockpile sites, storage areas, plant sites, and waste areas.

The Contractor will arrange and pay for a record search and when necessary, a cultural resource survey. The Contractor has the option to contact the state Archaeological Research Center (ARC) at 605-394-1936 or another qualified archaeologist, to obtain either a records search or a cultural resources survey. A record search might be sufficient for review if the site was previously surveyed; however, a cultural resources survey may need to be conducted by a qualified archaeologist.

The Contractor will provide ARC with the following: a topographical map or aerial view in which the site is clearly outlined, site dimensions, project number, and PCN. If applicable, provide evidence that the site has been previously disturbed by farming, mining, or construction activities with a landowner statement that artifacts have not been found on the site.

The Contractor will submit the cultural resources survey report to SDDOT Environmental Office, 700 East Broadway Avenue, Pierre, SD 57501-2586. SDDOT will submit the information to the appropriate SHPO/THPO. Allow **30 Days** from the date this information is submitted to the Environmental Engineer for SHPO/THPO review.

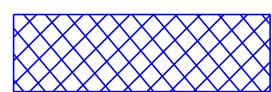
In the event of an inadvertent discovery of human remains, funerary objects, or if evidence of cultural resources is identified during project construction activities, then such activities within 100 feet of the inadvertent discovery will immediately cease and the Project Engineer will be immediately notified. The Project Engineer will contact the SDDOT Environmental Office, who will contact the appropriate SHPO/THPO within 48 hours of the discovery to determine an appropriate course of action.

The Contractor is responsible for obtaining any additional permits and clearances for Contractor furnished material sources, material processing sites, stockpile sites, storage areas, plant sites, and waste areas that affect wetlands, threatened and endangered species, or waterways. The Contractor will not utilize a site known or suspected of having contaminated soil or water. The Contractor will provide the required permits and clearances to the Project Engineer at the preconstruction meeting.

STATE OF SOUTH DAKOTA	PROJECT	SHEET	TOTAL SHEETS
	0009-271	5	7

Plotting Date: 02/22/24

Cold Milling Layout



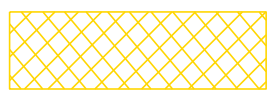
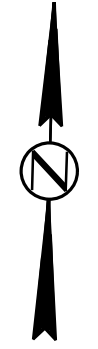
Cold Mill 2" of Asphalt Concrete

Cold Milling Limits to be Marked by the Engineer

STATE OF SOUTH DAKOTA	PROJECT	SHEET	TOTAL SHEETS
	0009-271	6	7

Plotting Date: 02/22/24

Surfacing Layout



2" Asphalt Concrete Composite (One - 2" Lift)

PLOT SCALE - 1:104,224

PLOTTED FROM - TRSF12147

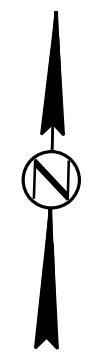
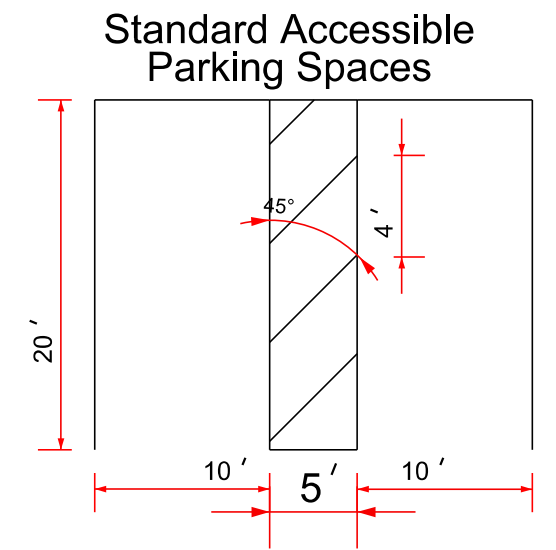
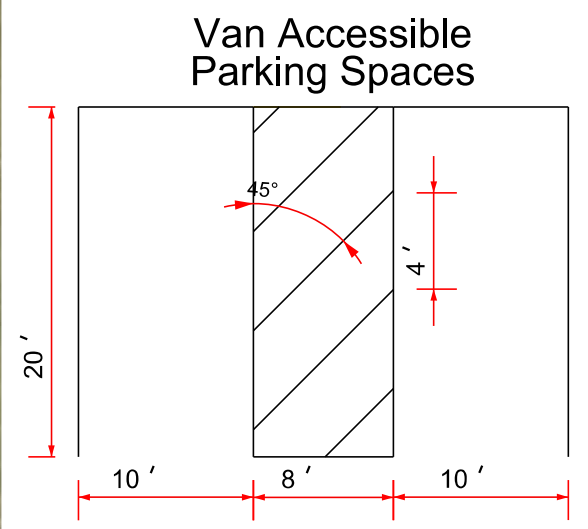
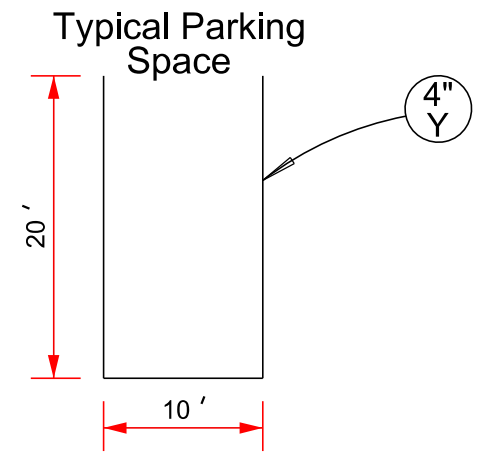
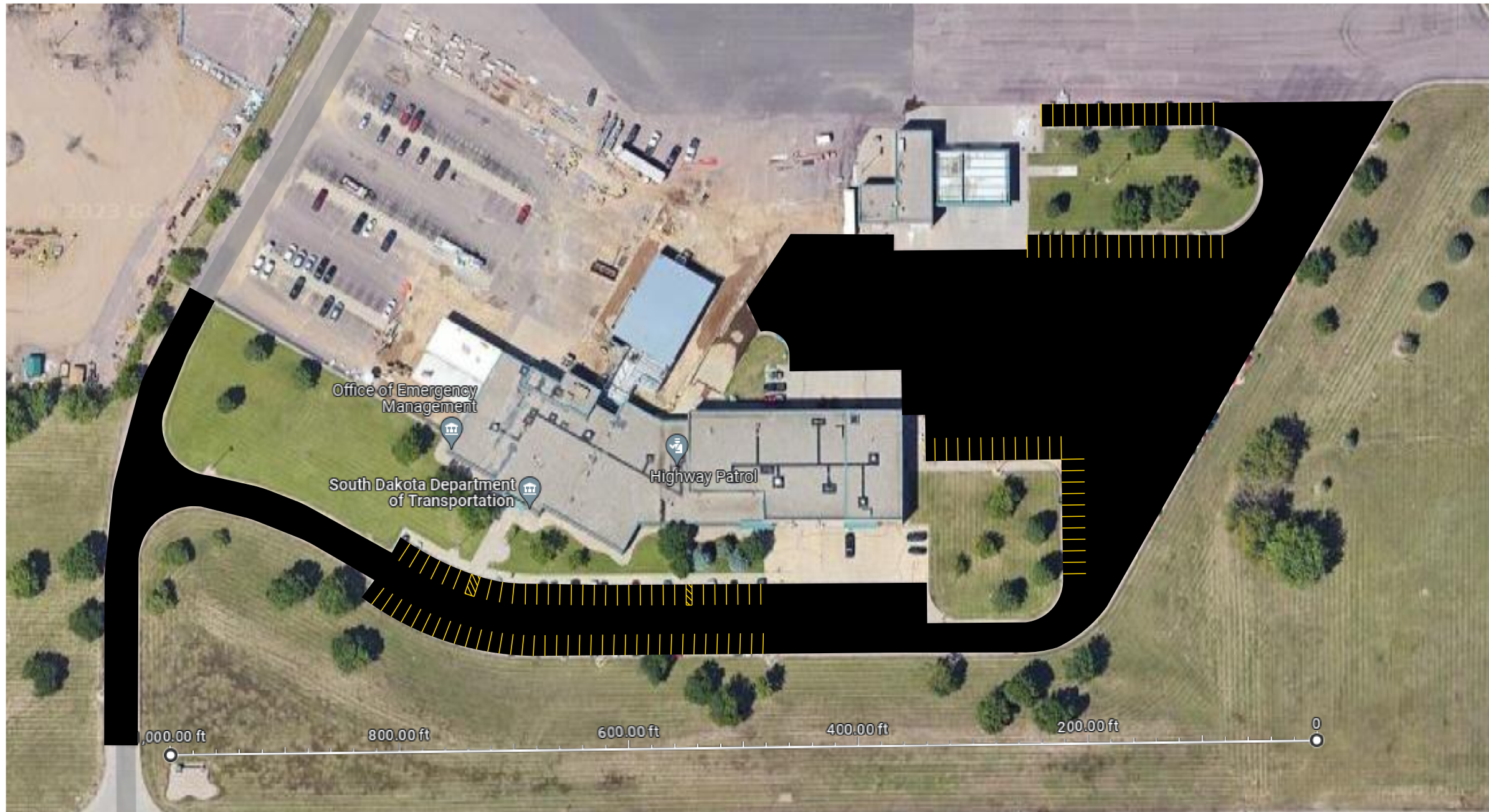
PLOT NAME - 2

FILE - ... \17EE.DGN

Parking Space Paint Layout

STATE OF SOUTH DAKOTA	PROJECT	SHEET	TOTAL SHEETS
	0009-271	7	7

Plotting Date: 02/22/24



Pavement Marking Locations to be Marked by Contractor and Checked by Engineer

PLOT SCALE - 1:104,224

PLOTTED FROM - TRSF12147

PLOT NAME - 1

FILE - ... \17EE.DGN