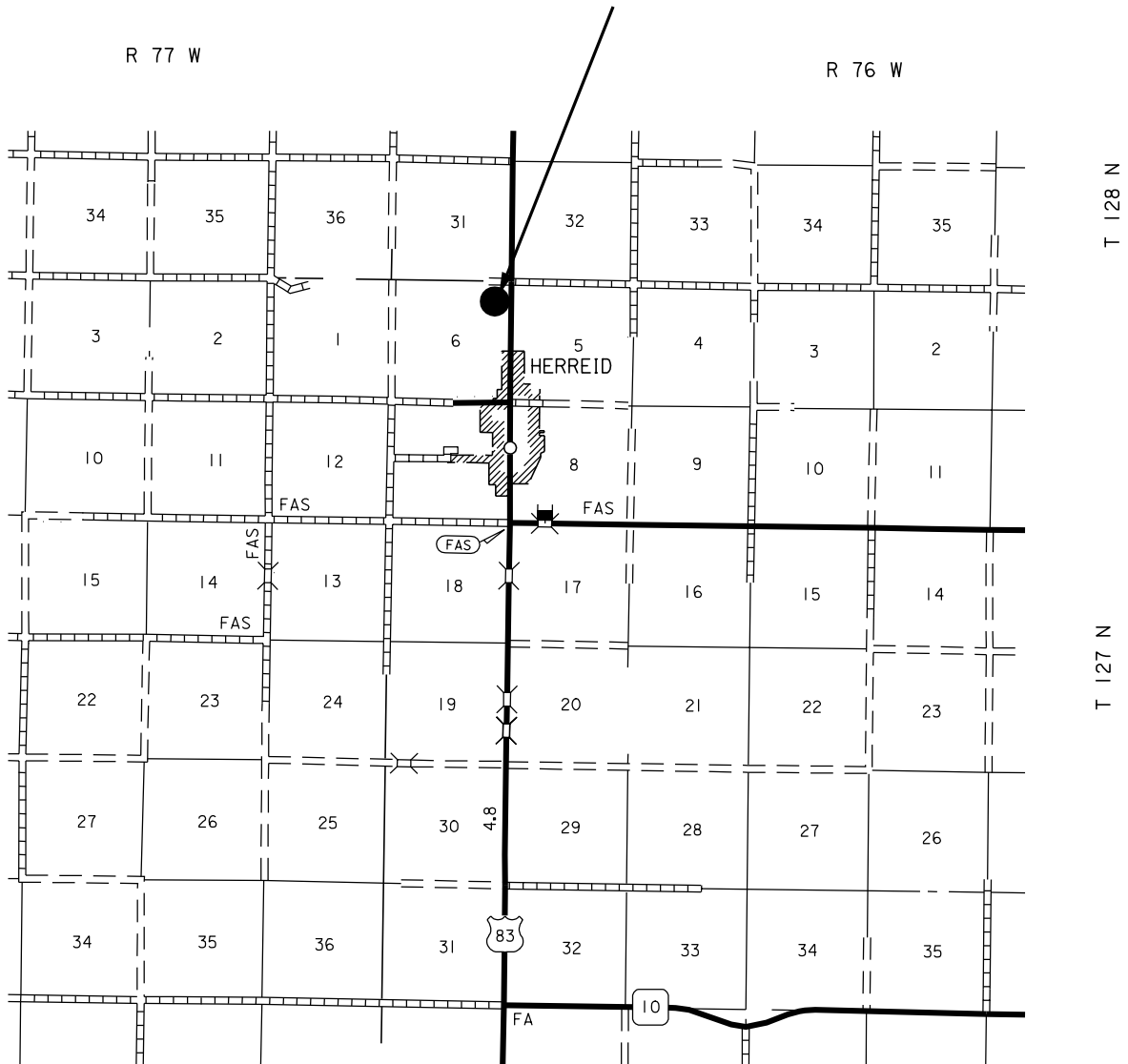


410C219
CAMPBELL COUNTY
ASPHALT CONCRETE COMPOSITE
PCNS i1L9



HERREID MAINTENANCE YARD
LOCATED IN THE NE1/4
SEC. 6 - T127N - R77W
CAMPBELL COUNTY



ESTIMATE OF QUANTITIES

BID ITEM NUMBER	ITEM	QUANTITY	UNIT
009E0010	Mobilization	Lump Sum	LS
320E0004	PG 58-28 Asphalt Binder	103.1	Ton
320E1050	Class E Asphalt Concrete	1690.0	Ton
320E3000	Compaction Sample	3.0	Each
330E0100	SS-1h or CSS-1h Asphalt for Tack	1.6	Ton

SPECIFICATIONS

South Dakota Department of Transportation Standard Specifications for Roads and Bridges, 2004 Edition and required Provisions, Supplemental Specifications and/or Special Provisions as included in the Proposal will apply to this work.

CLASS E ASPHALT CONCRETE

The Contractor is required to notify the Area Engineer at least two weeks prior to beginning paving.

The Mobridge Area Personnel will do all site preparation prior to paving.

The Asphalt Concrete shall be placed by the contractor at the Herreid Maintenance Yard as shown on the attached layout. The asphalt concrete shall be placed in 2 – 2" lifts. SS-1h or CSS-1h at a rate of 0.05 gallon per square yard will be required for tack between lifts.

Mineral aggregate for the Class E Asphalt Concrete shall conform to the requirements for Class E, Type 1.

The asphalt binder used in the mixture shall be PG 58-28 Asphalt Binder.

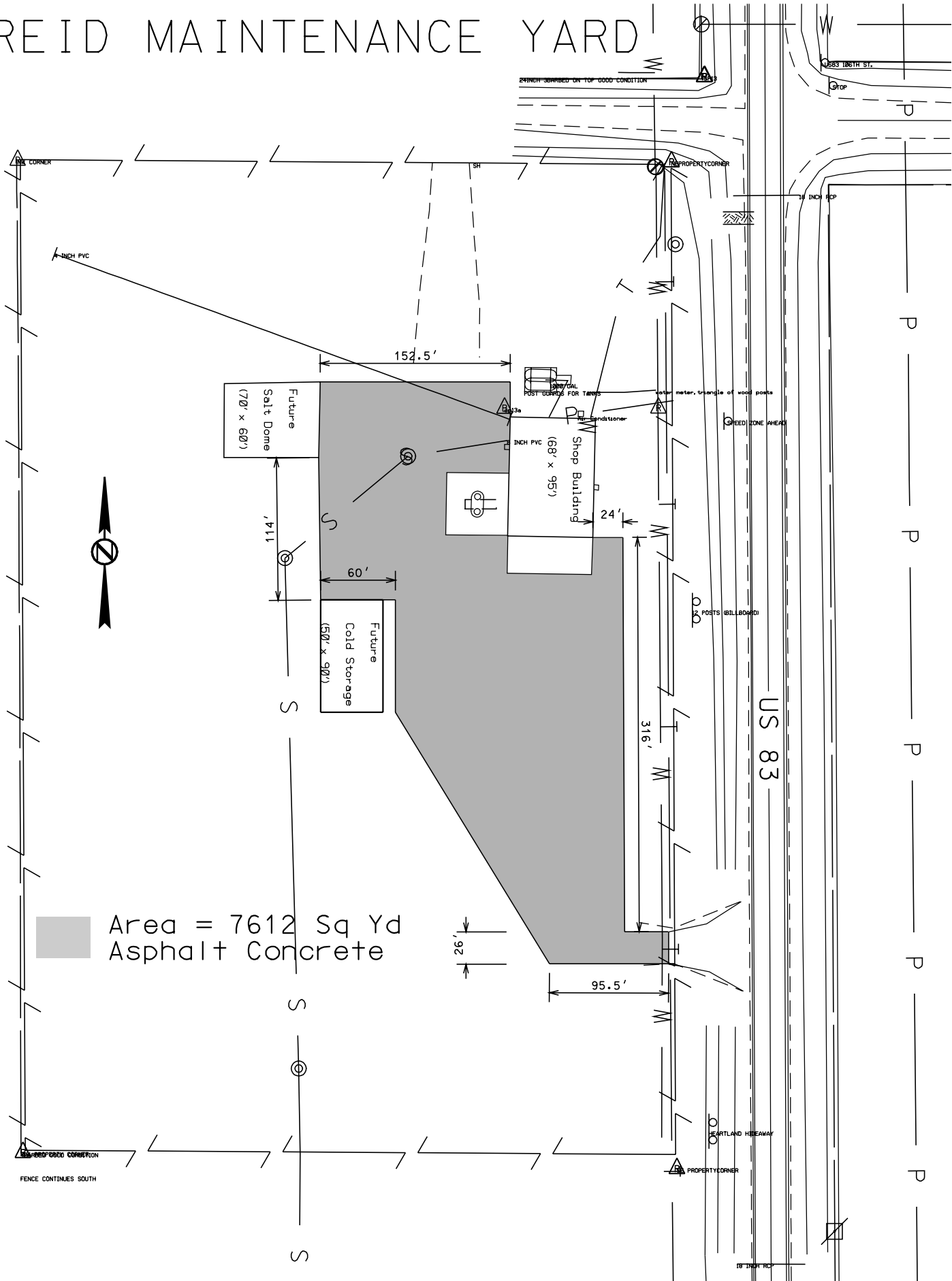
The requirement for a paver feeder from section 320.3F is waived.

MAINTENANCE OF TRAFFIC

The Contractor shall furnish and install 48" x 48" TRUCK CROSSING signs (W8-6) that are to be placed on State or County highways, or other well traveled roadways. The signs shall be located a minimum of 550' in advance of intersections and approaches to the highway where the haul route crosses, or turns onto or from the highway. The TRUCK CROSSING signs shall be installed for both directions of traffic travel. The exact number and location of the signs will be determined based on the pit location and haul road approved for use.

The TRUCK CROSSING signs shall be displayed at all times when the haul vehicles are hauling material from the pit to the stockpile site. During non-working hours, the signs shall be covered or removed from view. Hinged signs may be used. There will be no direct payment for the TRUCK CROSSING signs. All costs for furnishing, installing, maintaining, and removing the signs shall be incidental to the various contract items.

HERREID MAINTENANCE YARD



Area = 7612 Sq Yd
Asphalt Concrete