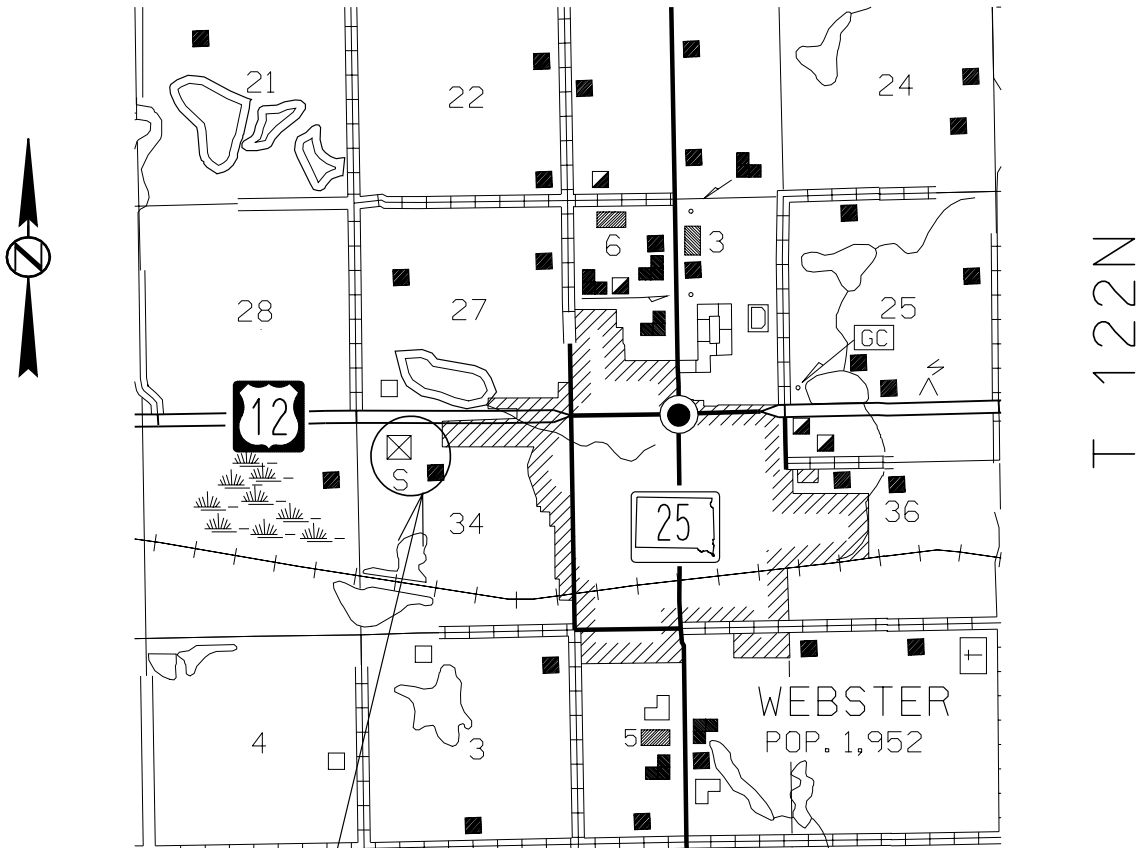


1571S
Day COUNTY

DEICING SAND STOCKPILE

PCN ilga

R56W



T 122N

Project 1571S

INDEX OF PLAN SHEETS

| | |
|-------------------|---|
| Sheet No. 1 | Layout Map |
| Sheet No. 2 | Index of Plan Sheets |
| Sheet No. 3 and 4 | Estimate of Quantities, Specifications And Notes |
| Sheet No. 5 and 6 | Sign Support Details |

**1571S
Day COUNTY**

ESTIMATE OF QUANTITIES

| BID ITEM NUMBER | ITEM | QUANTITY |
|--------------------|------------------|-----------|
| 009E0010 | MOBILIZATION | LUMP SUM |
| 740E0800 | SAND FOR DEICING | 5,000 TON |

SPECIFICATIONS

Standard Specifications for Roads and Bridges, 2004 Edition, and Required Provisions, Supplemental Specifications and/or Special Provisions as included in the Proposal.

STOCKPILE SITES

The stockpile for Project 1571S shall be located in the Webster Maintenance Yard located in Lot A NW ¼ Sec 34 T122N R56W. The exact location within the yard shall be determined by the Engineer upon construction.

The Contractor shall coordinate with the Engineer to determine accessibility of the maintenance yard sites.

The Contractor shall use his own equipment to build the stockpile on a suitably prepared site. Stockpile site preparation shall be the responsibility of the Contractor. The stockpile shall be built with a stacking conveyor with the maximum drop of material from the conveyor not to exceed 10 feet. Equipment shall not be allowed on the stockpile. The stockpile shall be built and shaped to shed water.

AGGREGATE FOR DEICING SAND

Aggregate for Deicing Sand shall be furnished by the Contractor.

Prior to aggregate placement at the stockpile site, the Contractor shall contact the Engineer to perform informational test(s). If test results indicate the presence of nonconforming material, the Contractor shall perform corrective actions and allow additional testing as requested by the Engineer. Aggregate placement at the stockpile site shall not be performed until authorized by the Engineer. The aggregate placed at the stockpile site shall be subject to Acceptance testing as required by the contract.

Aggregate for Deicing Sand shall conform to the following gradation requirements:

| | |
|------------------------|---------|
| Passing 3/8 inch sieve | 100% |
| Passing No. 4 sieve | 80-100% |
| Passing No. 10 sieve | 40-80% |
| Passing No. 40 sieve | 5-35% |
| Passing No. 200 sieve | 0-10% |

The Plasticity Index shall not exceed 3.
The Liquid Limit shall not exceed 26.

AGGREGATE FOR DEICING SAND (CONT.)

Sand for Deicing will be measured and paid to the nearest 0.1 ton.

The contract unit price per ton for "Sand for Deicing" shall be full compensation for all labor, equipment, materials, and incidental costs associated with producing, hauling, and stockpiling sand at the stockpile location.

HAUL ROAD

The Contractor shall be responsible for any haul roads used to transport material to the project site. The State will not participate in the cost of restoration of any haul roads used by the Contractor.

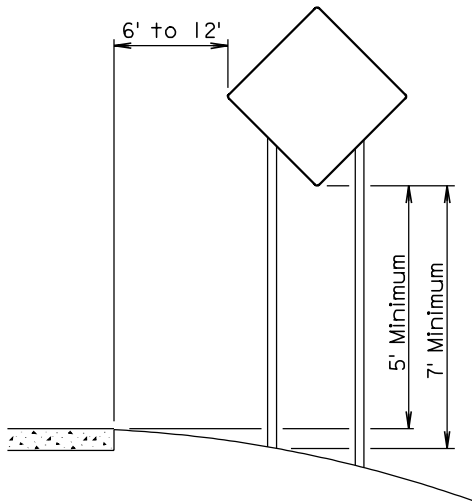
TRAFFIC CONTROL

The Contractor shall provide a sufficient number of 48"x 48" TRUCK CROSSING signs. The exact number and location of the signs will be determined by the Engineer based on the pit location and haul route used.

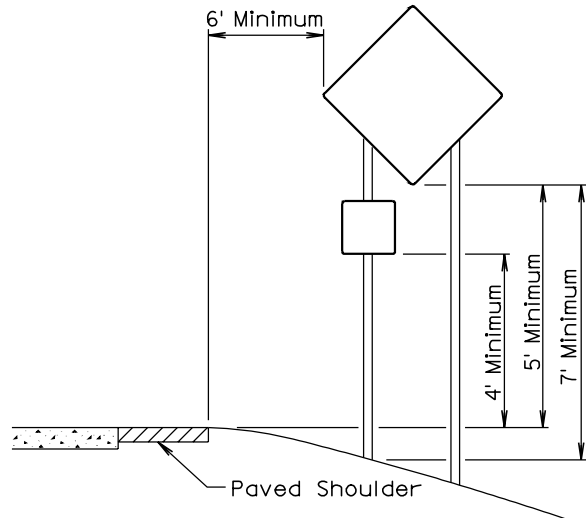
The TRUCK CROSSING signs shall be displayed at all times when trucks are hauling material from the pit to the stockpile site. During non-working hours, the signs must be covered or removed from view. Hinged signs that completely cover the face of the sign are considered an acceptable method. TRUCK CROSSING signs may be placed on fixed supports with breakaway bases, or mounted on portable supports. The portable supports shall be constructed to yield upon impact to minimize hazards to motorists. The bottom of signs on portable or temporary supports shall not be less than seven feet above the pavement in urban areas, and one foot above the pavement in rural areas.

There will be no direct payment for traffic control. All costs of providing, installing, maintaining, and removing the signs shall be incidental to the various contract items.

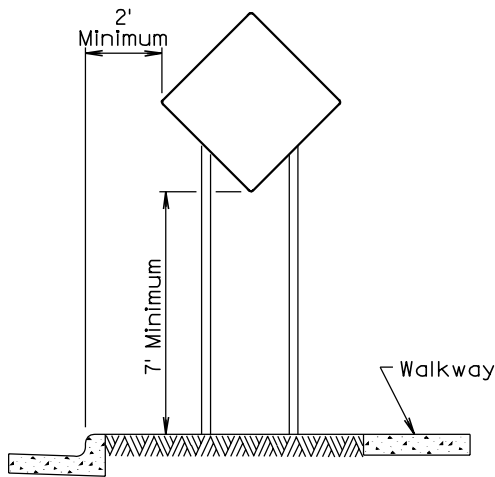
All breakaway sign supports shall comply with FHWA NCHRP 350 crashworthy requirements. The Contractor shall provide post installation details at the preconstruction meeting for all steel post breakaway sign support assemblies.



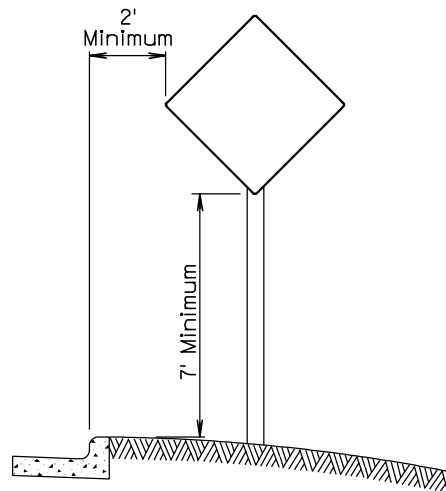
RURAL DISTRICT



RURAL DISTRICT WITH
SUPPLEMENTAL PLATE



URBAN DISTRICT



URBAN DISTRICT

December 23, 2003

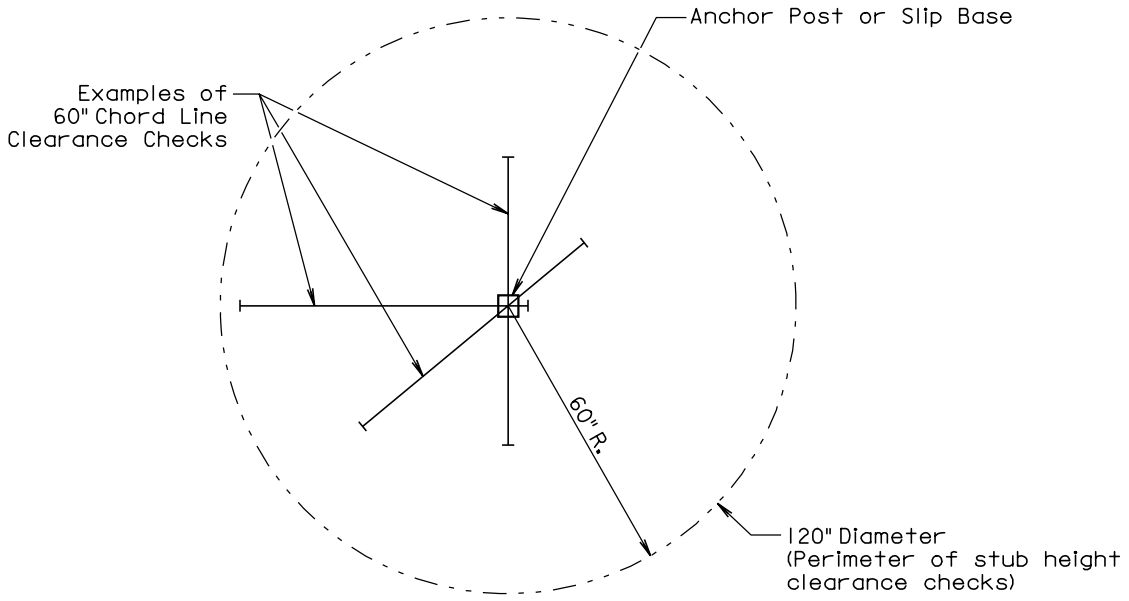
Published Date: 3rd Qtr. 2008

**S
D
D
O
T**

BREAKAWAY SIGN SUPPORTS
(Typical Construction Signing)

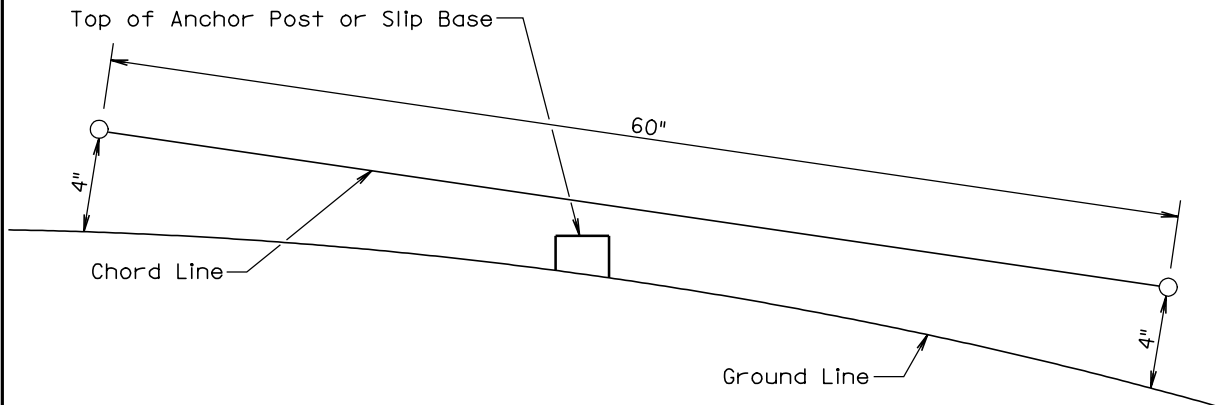
PLATE NUMBER
634.85

Sheet 1 of 1



PLAN VIEW

(Examples of stub height clearance checks)



ELEVATION VIEW

GENERAL NOTES:

The top of anchor posts and slip bases SHALL NOT extend above a 60" chord line within a 120" diameter circle around the post with ends 4" above the ground.

At locations where there is curb and gutter adjacent to the breakaway sign support, the stub height shall be a maximum of 4" above the ground line at the localized area adjacent to the breakaway support stub.

The 4" stub height clearance is not necessary for U-channel lap splices where the support is designed to yield (bend) at the base.

July 1, 2005

Published Date: 3rd Qtr. 2008

**S
D
D
O
T**

BREAKAWAY SUPPORT STUB CLEARANCE

**PLATE NUMBER
634.99**

Sheet 1 of 1