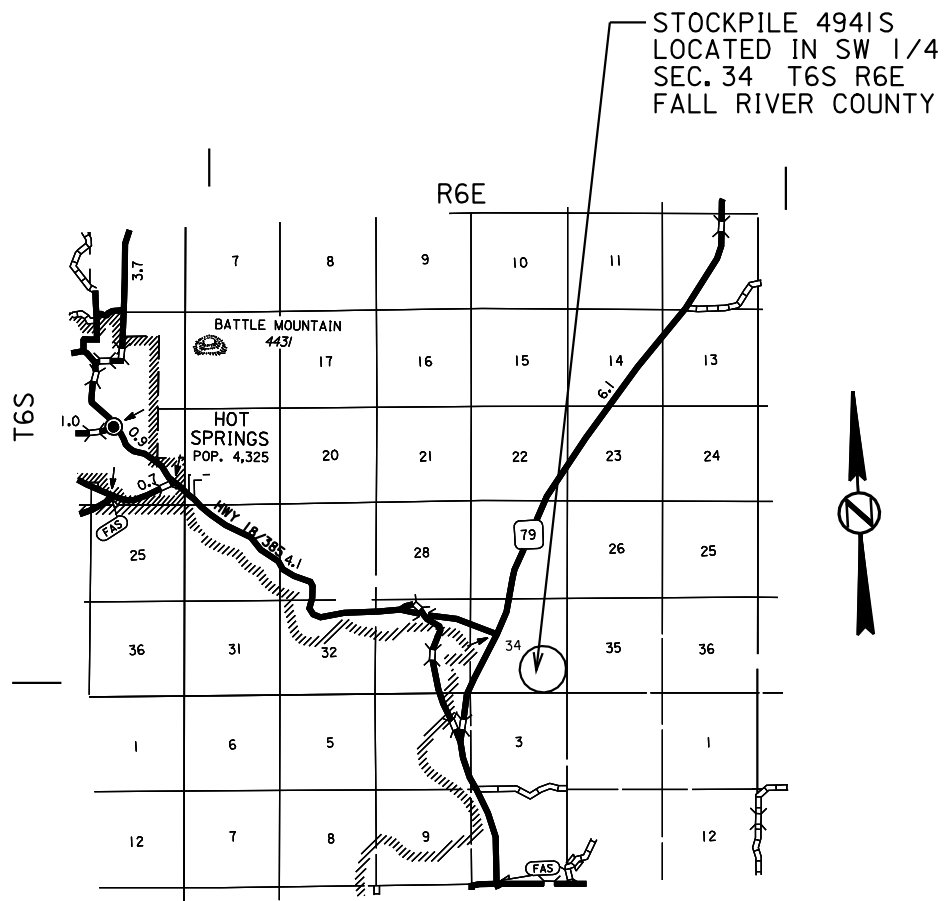
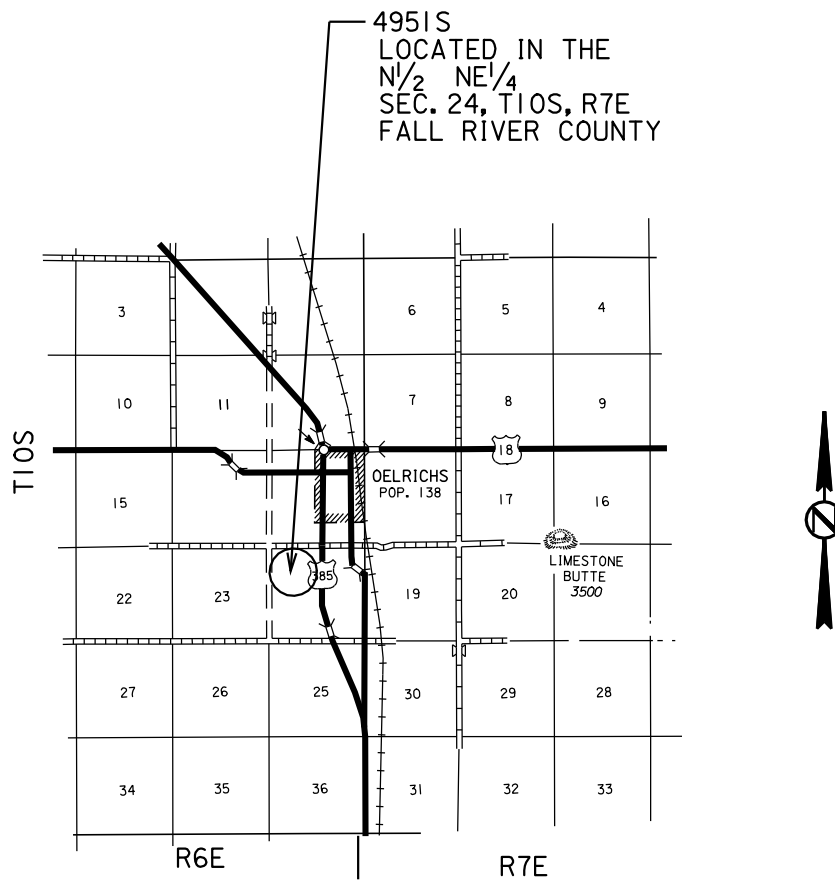


4941S, 4951S, 4972S FALL RIVER COUNTY

4941S FALL RIVER COUNTY SAND STOCKPILE PCN i28a

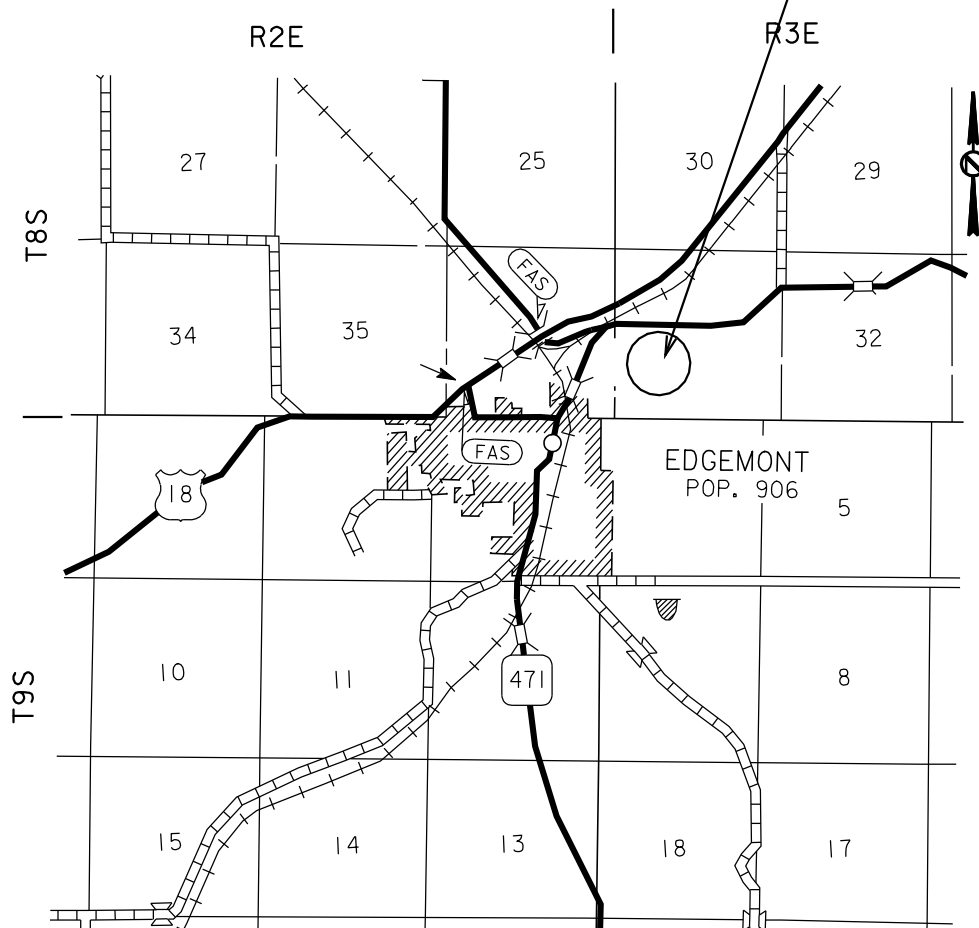


4951S
FALL RIVER COUNTY
SAND STOCKPILE
PCN i27z



4972S
FALL RIVER COUNTY
SAND STOCKPILE
PCN i28c

STOCKPILE 4972S
Located in Sec. 33
T8S, R3E,
Fall River County



4941S, 4951S & 4972S

FALL RIVER COUNTY

INDEX OF PLAN SHEETS

Sheet No. 1 thru 3	Layout Map
Sheet No. 4	Index of Plan Sheets
Sheet No. 5	Estimate of Quantities
Sheet Nos. 6 and 7	Specifications and Notes

4941S, 4951S & 4972S

FALL RIVER COUNTY

ESTIMATE OF QUANTITIES

<u>BID ITEM NUMBER</u>	<u>ITEM</u>	<u>4941S QUANTITY</u>	<u>4951S QUANTITY</u>	<u>4972S QUANTITY</u>	<u>TOTAL QUANTITY</u>
740E0700	SAND FOR CRUSHED AGGREGATE	1,500 TON	1,000 TON	1,500 TON	4,000 TON
740E0800	SAND FOR DEICING	1,500 TON	1,000 TON	1,500 TON	4,000 TON

4941S, 4951S & 4972S

FALL RIVER COUNTY

SPECIFICATIONS TO BE USED

Standard Specifications for Road and Bridges, 2004 Edition, and Required Provisions, Supplemental Specifications and/or Special Provisions as included in the Proposal.

SCOPE OF WORK

Work on this project shall be to furnish and stockpile sand for deicing and sand for crushed aggregate. There will be two stockpiles at each location.

Hot Springs Maintenance Yard	1,500 ton Sand for Deicing 1,500 ton Sand for Crushed Aggregate
Oelrichs Maintenance Yard	1,000 ton Sand for Deicing 1,000 ton Sand for Crushed Aggregate
Edgemont Maintenance Yard	1,500 ton Sand for Deicing 1,500 ton Sand for Crushed Aggregate

SAND FOR DEICING

Sand for Deicing shall consist of modified concrete sand and shall conform to the following gradation requirements:

	Modified Concrete Sand
Passing 3/8 inch sieve	100%
Passing No. 4 sieve	95-100%
Passing No. 16 sieve	45-85%
Passing No. 50 sieve	10-30%
Passing No. 100 sieve	2-10%
Passing No. 200 sieve	0-2%

No tolerance in the amount passing the largest sieve shall be allowed. 100% shall pass the 3/8 inch sieve.

The stockpile shall be built as directed by the Engineer. Sand for deicing shall be Contractor furnished.

All costs for traffic control, furnishing and stockpiling the deicing sand shall be incidental to the contract unit price per ton for Sand for Deicing.

4941S, 4951S & 4972S

FALL RIVER COUNTY

SAND FOR CRUSHED AGGREGATE

Sand for Crushed Aggregate shall consist of air separated limestone fines and shall conform to the following gradation requirements:

	Limestone
Passing 1/4 inch sieve	100%
Passing No. 4 sieve	90-100%
Passing No. 10 sieve	45-55%
Passing No. 40 sieve	9-20%
Passing No. 200 sieve	0-10%

The Liquid Limit of the material shall not exceed 26 and the Plastic Index shall not exceed 3.

No tolerance in the amount passing the largest sieve shall be allowed. 100% shall pass the 1/4 inch sieve.

The stockpile shall be built as directed by the Engineer. Sand for crushed aggregate shall be Contractor furnished.

All costs for traffic control, furnishing and stockpiling the sand for crushed aggregate shall be incidental to the contract unit price per ton for Sand for Crushed Aggregate.

TRAFFIC CONTROL

The Contractor shall be required to provide sufficient number of 48" x 48" TRUCK CROSSING signs. The exact number and location of the signs will be determined by the Engineer based on the pit and haul road approved for use.

The TRUCK CROSSING signs shall be displayed at all times when the haul vehicles are hauling material from the pit to the stockpile site. During non-working hours the signs shall be covered or removed from view. Hinged signs that completely cover the face of the sign are considered an acceptable method.

Signs shall be located and erected according to the requirements of the Manual on Uniform Traffic Control Devices or as directed by the Engineer. All signs shall be portable and shall meet the crashworthy requirements of NCHRP350 and/or MASH.

There will be no direct payment for the traffic control. All costs for providing, installing, maintaining and removing the signs shall be incidental to the unit price per ton for Sand for Crushed Aggregate and Sand for Deicing.

HAUL ROAD

The Contractor shall be responsible for any haul roads used to transport material to the project site. The State will not participate in the cost of restoration of any roads used by the Contractor.