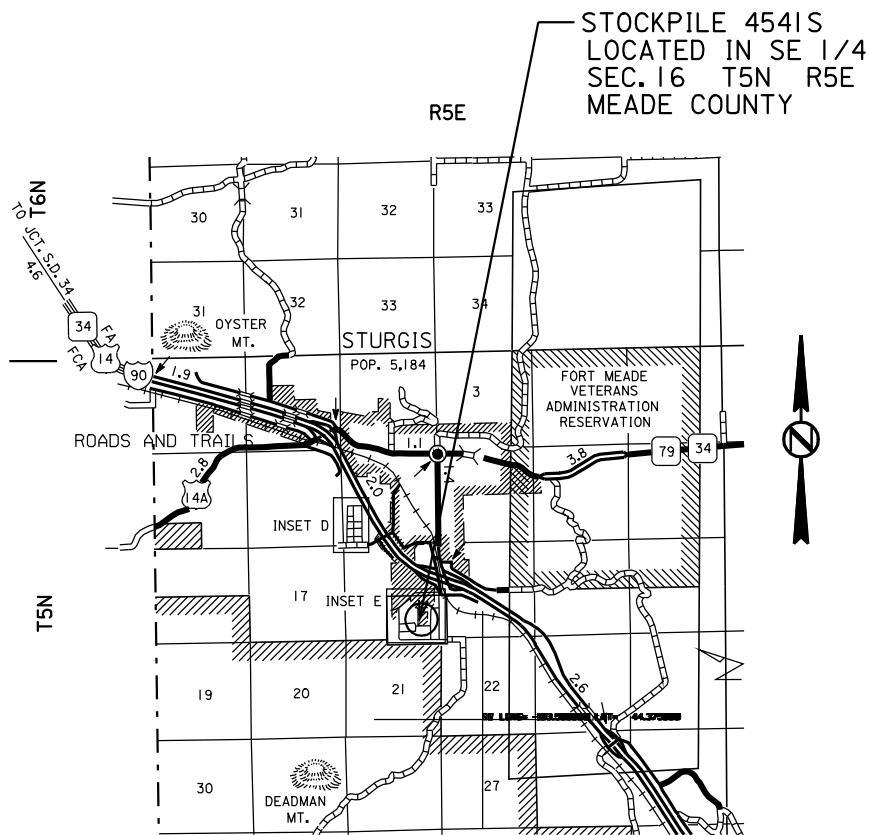


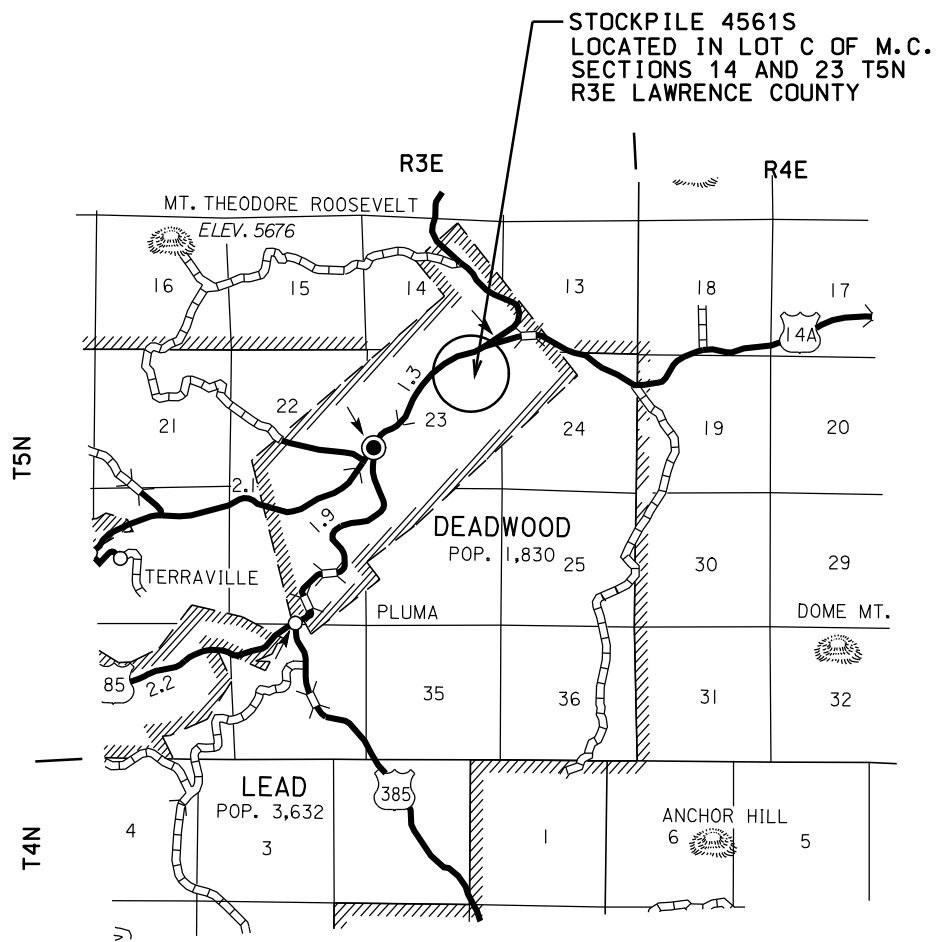
454IS, 456IS & 458IS
MEADE & LAWRENCE COUNTIES

454IS
MEADE COUNTY
SAND STOCKPILE
PCN i28d

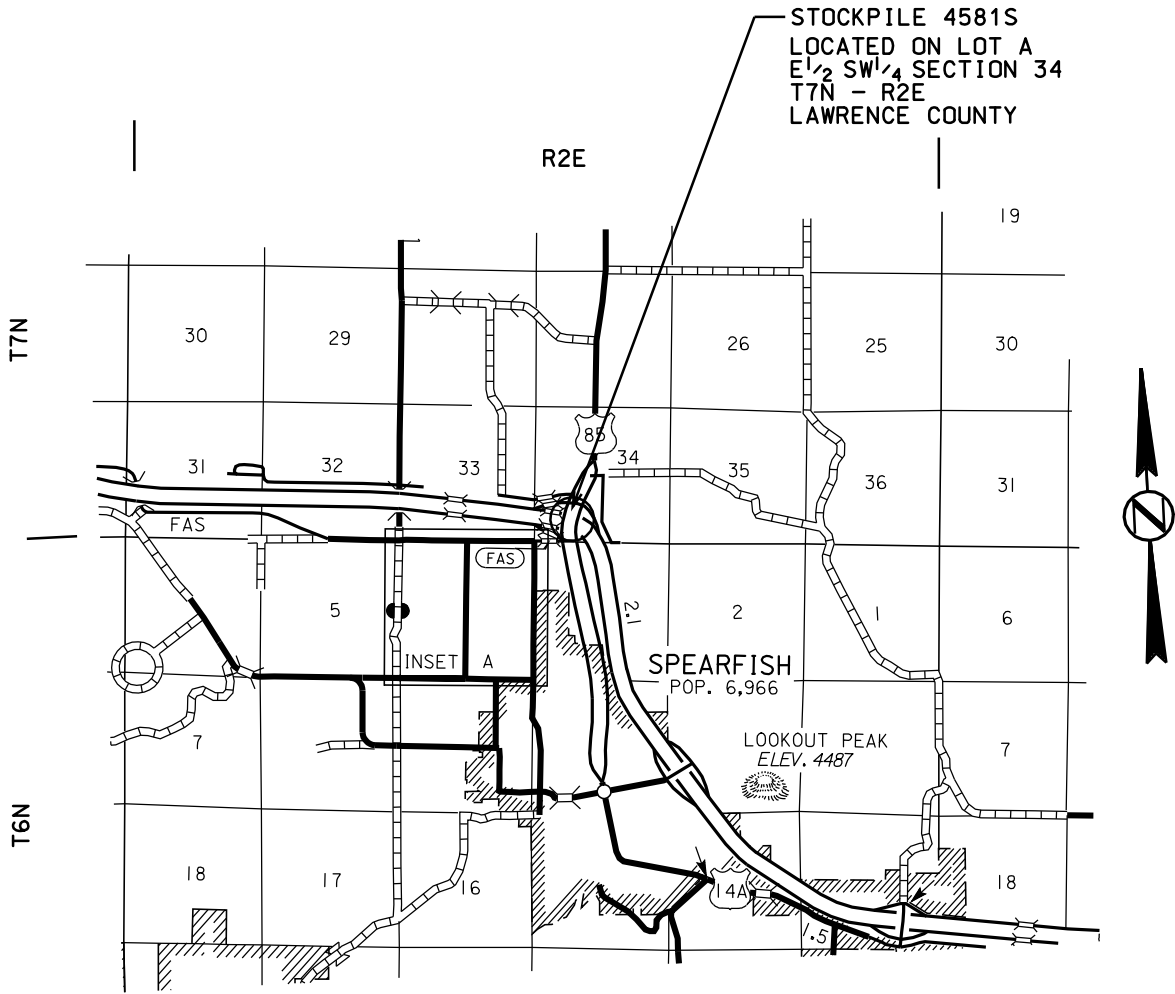


4561S
LAWRENCE COUNTY

PCN i28f



4581S
LAWRENCE COUNTY
PCN i28e



4541S, 4561S & 4581S

LAWRENCE & MEADE COUNTIES

INDEX OF PLAN SHEETS

Sheet Nos. 1 thru 3	Layout Map
Sheet No. 4	Index of Plan Sheets
Sheet No. 5	Estimate of Quantities
Sheet Nos. 6 and 7	Specifications and Notes

4541S, 4561S & 4581S

LAWRENCE & MEADE COUNTIES

ESTIMATE OF QUANTITIES

<u>BID ITEM NUMBER</u>	<u>ITEM</u>	<u>4541S QUANTITY</u>	<u>4561S QUANTITY</u>	<u>4581S QUANTITY</u>	<u>TOTAL QUANTITY</u>
740E0800	SAND FOR DEICING	3,000 TON	10,000 TON	3,000 TON	16,000 TON

4541S, 4561S & 4581S

LAWRENCE & MEADE COUNTIES

SPECIFICATIONS TO BE USED

Standard Specifications for Road and Bridges, 2004 Edition, and Required Provisions, Supplemental Specifications and/or Special Provisions as included in the Proposal.

SCOPE OF WORK

Work on this project shall be to furnish and stockpile sand for deicing at the following locations by the associated completion dates:

Sturgis Maintenance Yard	3,000 ton Sand for Deicing (by October 1, 2011)
Spearfish Maintenance Yard	3,000 ton Sand for Deicing (by October 1, 2011)
Deadwood Maintenance Yard	10,000 ton Sand for Deicing (by September 1, 2011)

No hauling to stockpiles in Deadwood, Sturgis or Spearfish shall be permitted from July 25, 2011 thru August 12, 2011.

SAND FOR DEICING

Sand for Deicing shall consist of natural sand or other inert materials with similar characteristics having hard, strong, durable particles and shall conform to the following gradation requirements:

Passing 3/8 inch sieve	100%
Passing No. 4 sieve	80-100%
Passing No. 10 sieve	40-80%
Passing No. 40 sieve	5-35%
Passing No. 200 sieve	0-10%

Limestone material meeting gradation requirements may be substituted for no more than 50% of the quantity at each maintenance yard. Blending of the limestone and sand shall be completed to the satisfaction of the engineer. Weight tickets shall denote the type of material delivered.

The Liquid Limit of the material shall not exceed 26 and the Plastic Index shall not exceed 3.

No tolerance in the amount passing the largest sieve shall be allowed. 100% shall pass the 3/8 inch sieve.

The stockpile shall be built as directed by the Engineer. Sand for deicing shall be Contractor furnished.

All costs for traffic control, furnishing and stockpiling the deicing sand shall be incidental to the contract unit price per ton for Sand for Deicing.

4541S, 4561S & 4581S

LAWRENCE & MEADE COUNTIES

TRAFFIC CONTROL

The Contractor shall be required to provide sufficient number of 48" x 48" TRUCK CROSSING signs. The exact number and location of the signs will be determined by the Engineer based on the pit and haul road approved for use.

The TRUCK CROSSING signs shall be displayed at all times when the haul vehicles are hauling material from the pit to the stockpile site. During non-working hours the signs shall be covered or removed from view. Hinged signs that completely cover the face of the sign are considered an acceptable method.

Signs shall be located and erected according to the requirements of the Manual on Uniform Traffic Control Devices or as directed by the Engineer. All signs shall be portable and shall meet the crashworthy requirements of NCHRP350 and/or MASH.

There will be no direct payment for the traffic control. All costs for providing, installing, maintaining and removing the signs shall be incidental to the contract unit price per ton for Sand for Deicing.

HAUL ROAD

The Contractor shall be responsible for any haul roads used to transport material to the project site. The State will not participate in the cost of restoration of any roads used by the Contractor.