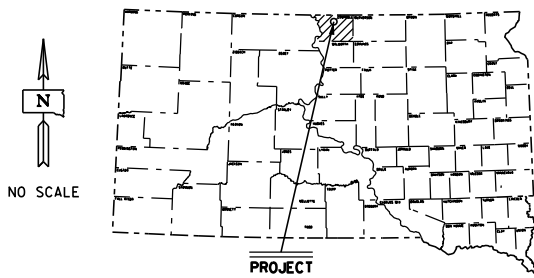


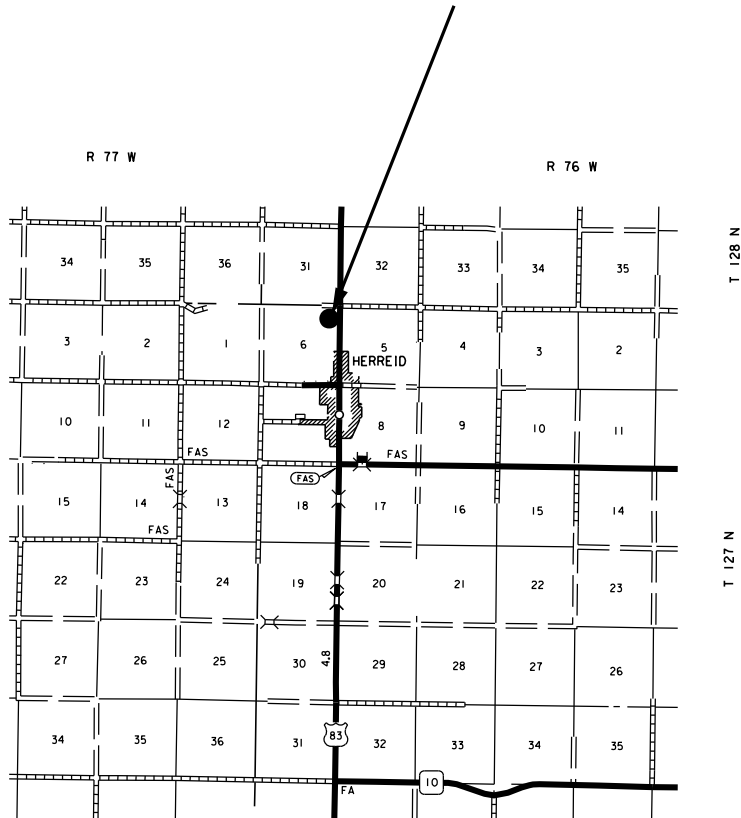
**STATE OF SOUTH DAKOTA**  
**DEPARTMENT OF TRANSPORTATION**  
**PLANS FOR PROPOSED**

**PROJECT 3751C**  
**SDDOT HERREID MAINTENANCE YARD**  
**CAMPBELL COUNTY**

**COVER AGGREGATE STOCKPILE**  
**PCN I2WA**



**Herreid Maintenance Yard**  
**Stockpile Number 3751C**  
**Campbell County**  
**(NE1/4 SEC 6 T127 N R77W)**



**INDEX OF PLAN SHEETS**

SHEET NO. 1	LAYOUT MAP
SHEET NO. 2	INDEX OF PLAN SHEETS AND ESTIMATE OF QUANTITIES
SHEET NO. 3	SPECIFICATIONS & NOTES
SHEET NO. 4	STANDARD PLATES

**ESTIMATE OF QUANTITIES**

<b>Bid Item Number</b>	<b>Item</b>	<b>Quantity</b>	<b>Unit</b>
<b>009E0010</b>	<b>Mobilization</b>	<b>LS</b>	<b>Lump Sum</b>
<b>360E1200</b>	<b>Modified Cover Aggregate</b>	<b>3000</b>	<b>Ton</b>
	(Herreid Maintenance Yard) Stockpile # 3751C		

## **SPECIFICATIONS**

Standard Specifications for Roads and Bridges, 2004 Edition and Required Provisions, Supplemental Specifications and/or Special Provisions as included in the Proposal.

### **MODIFIED COVER AGGREGATE**

Aggregate for Cover Aggregate shall conform to the following gradation requirements:

Passing a 3/8 Inch Sieve	100%
Passing a No. 4 Sieve	0-75%
Passing a No. 8 Sieve	0-30%
Passing a No. 40 Sieve	0-6%
Passing a No. 200 Sieve	0-3.0%

Aggregate may be crushed or uncrushed.

All other requirements of the Standard Specifications (Section 881) for Type 1B shall apply.

The contract unit price per ton shall include all costs for furnishing and stockpiling the modified cover aggregate.

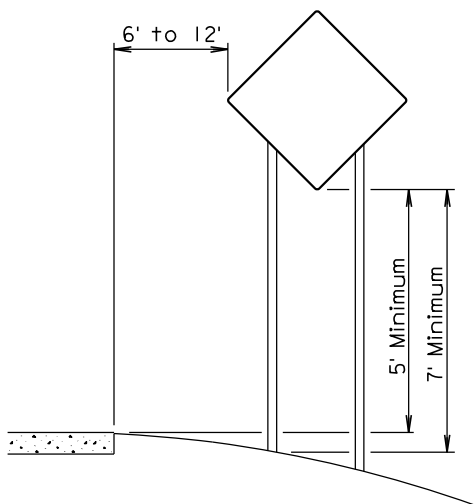
### **MAINTENANCE OF TRAFFIC**

The Contractor shall furnish and install 48" x 48" TRUCK CROSSING signs, W8-6, to be placed on State or County highways or other well-traveled roadways. The signs shall be located a minimum of 550' in advance of intersections and approaches to the highway where the haul route crosses or turns onto/from the highway. The TRUCK CROSSING signs shall be installed for both directions of traffic travel. The exact number and location of the signs will be determined based on the pit location and haul road approved for use.

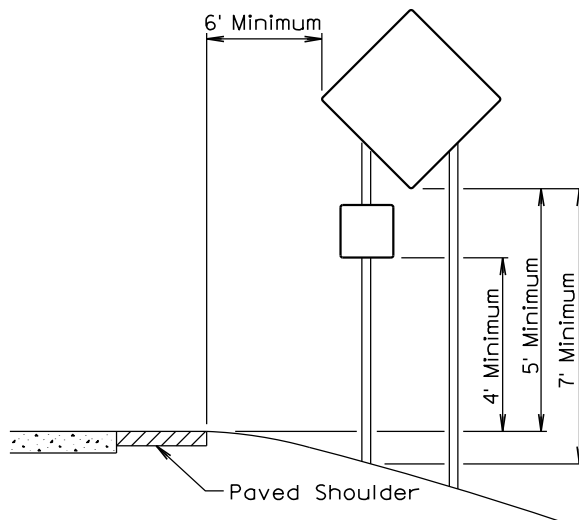
The TRUCK CROSSING signs shall be displayed at all times when the haul vehicles are hauling material from the pit to the stockpile site. During non-working hours, the signs shall be covered or removed from view. Hinged signs may be used. There will be no direct payment for the TRUCK CROSSING signs. All costs for furnishing, installation, maintenance and removal of the signs shall be absorbed in the various contract items.

### **HAUL ROADS**

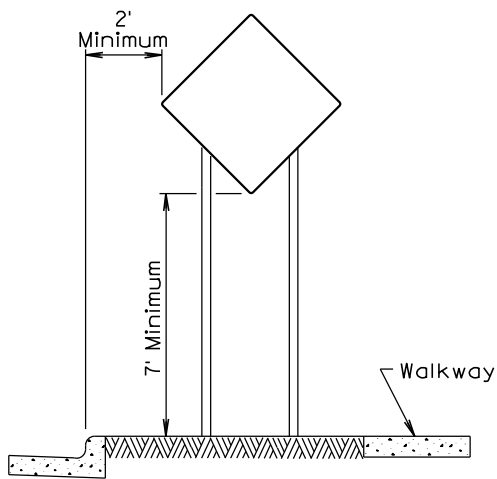
The Contractor shall be responsible for any haul roads used to transport material to the stockpile site. The State will not participate in the cost of restoration of any haul roads used by the Contractor.



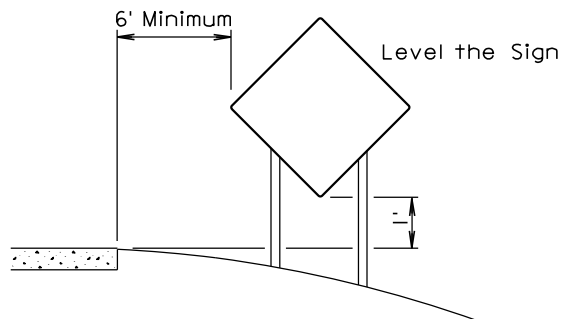
RURAL DISTRICT



RURAL DISTRICT WITH  
 SUPPLEMENTAL PLATE



URBAN DISTRICT



RURAL DISTRICT  
 3 DAY MAXIMUM

February 14, 2011

<p><i>Published Date: 1st Qtr. 2013</i></p>	<p><b>S D D O T</b></p>	<p><b>CRASHWORTHY SIGN SUPPORTS</b>                  (Typical Construction Signing)</p>	<p>PLATE NUMBER  <b>634.85</b></p>
			<p>Sheet 1 of 1</p>