

STATE OF SOUTH DAKOTA
DEPARTMENT OF TRANSPORTATION

PLANS FOR PROPOSED

PROJECT 410D362
HERMOSA MAINTENANCE YARD
CUSTER COUNTY

ASPHALT CONCRETE SURFACING
PCN i37p

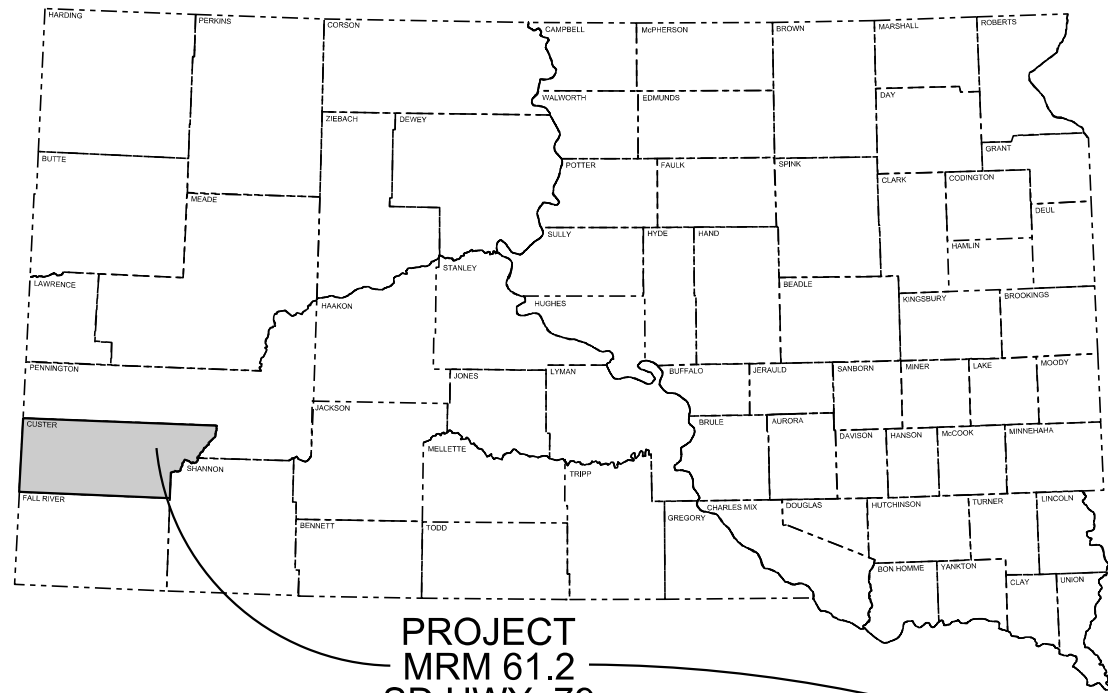
STATE OF SOUTH DAKOTA	PROJECT	SHEET	TOTAL SHEETS
	410D362	1	3

Plotting Date: 02/24/2014

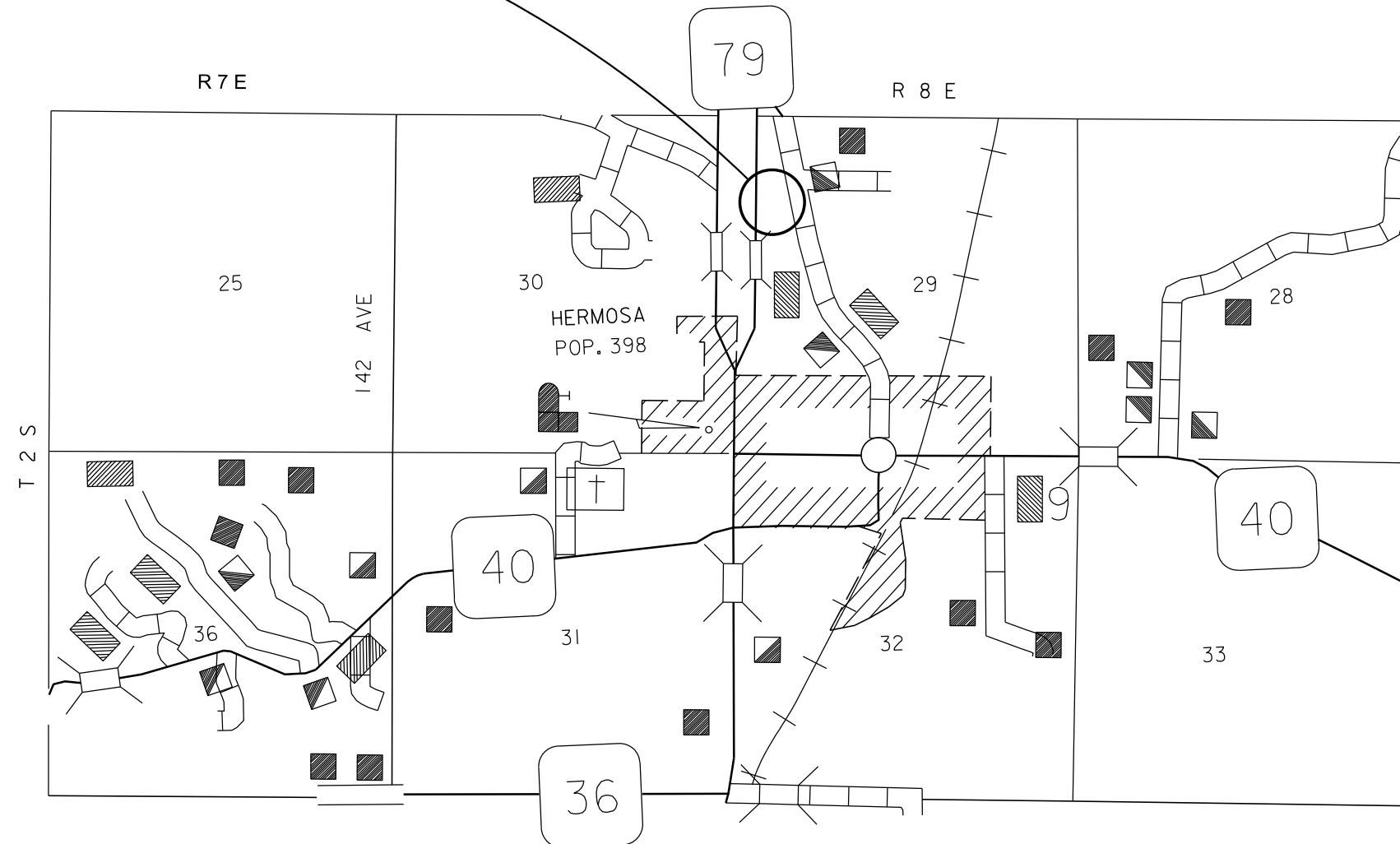
INDEX OF SHEETS

- Sheet No. 1: Title Sheet
- Sheet No. 2: Estimate of Quantities and Plan Notes
- Sheet No. 3: Plan Sheet

Plot Scale - 1:200



PROJECT
MRM 61.2
SD HWY. 79



Plotted From - trcs12608

ESTIMATE OF QUANTITIES

STATE OF SOUTH DAKOTA	PROJECT	SHEET	TOTAL SHEETS
	410D362	2	3

Bid Item Number	Item	Quantity	Unit
009E0010	Mobilization	Lump Sum	LS
320E1200	Asphalt Concrete Composite	700.0	Ton

SPECIFICATIONS

Standard Specifications for Roads and Bridges, 2004 Edition and Required Provisions, Supplemental Specifications and/or Special Provisions as included in the Proposal.

WORK DESCRIPTION

Work on this project includes asphalt concrete paving of the Hermosa DOT Maintenance Yard.

ASPHALT CONCRETE COMPOSITE

Asphalt Concrete Composite shall be furnished by the Contractor.

Mineral aggregate for the Asphalt Concrete Composite shall conform to the requirements of the Standard Specifications for Class E, Type 1. The Asphalt Concrete Composite shall be placed in 2 – 2" lifts for a total thickness of 4".

All other requirements in the Standard Specifications for Asphalt Concrete Composite shall apply.

The asphalt binder used in the mixture shall be PG 64-22, PG 64-28 or PG 64-34 Asphalt Binder.

MC-70 Asphalt for Prime shall be applied prior to the first lift of Asphalt Concrete Composite in the main yard at a rate of 0.30 gallon per square yard.

SS1-h or CSS1-h Emulsified Asphalt for Tack shall be applied to the first lift of Asphalt Concrete Composite in the main yard at a rate of 0.05 gallons per square yard.

Location and quantity shown in the plans are approximate. Exact locations are to be set by the Engineer. The Engineer reserves the right to adjust quantities and/or add location dependent on the condition of the Yard at the time of the work.

TRAFFIC CONTROL

Work activities during non-daylight hours are subject to prior approval. Daylight hours are considered to be ½ hour before sunrise until ½ hour after sunset.

A 2 week advanced notice of work is required.

SITE PREPARATION

Site preparation will be completed by the SDDOT.

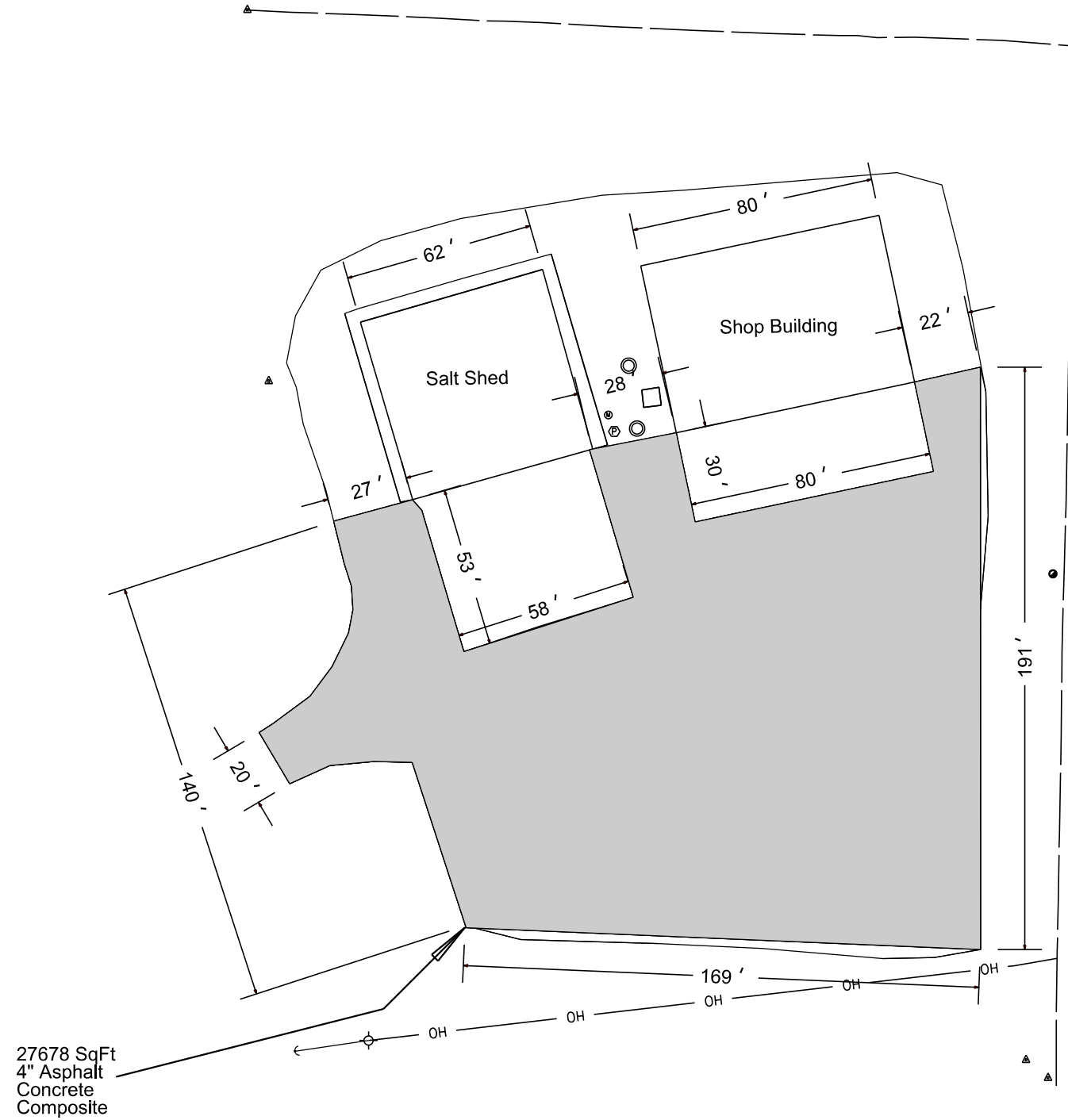
HERMOSA MAINTENANCE YARD

STATE OF SOUTH DAKOTA	PROJECT 410D362	SHEET 3	TOTAL SHEETS 3
-----------------------	--------------------	------------	-------------------

Plotting Date: 02/24/2014

PLOT SCALE - 1:50

PLOT NAME - 2



PLOTTED FROM - ITRC12508

FILE - ... \HERMOSA YARD\HERMOSAYARD.DGN