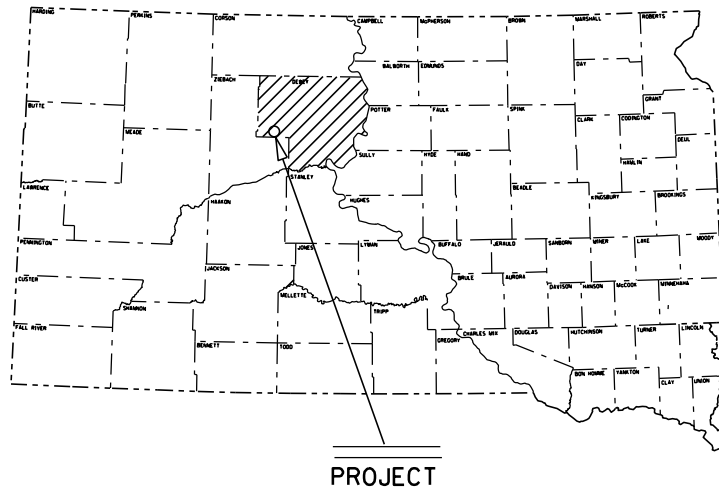
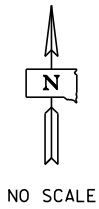


STATE OF SOUTH DAKOTA  
DEPARTMENT OF TRANSPORTATION  
PLANS FOR PROPOSED

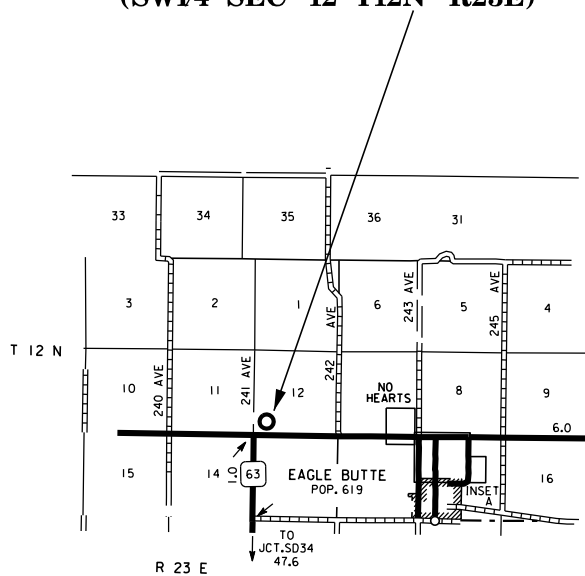
**PROJECT 3775R**  
**EAGLE BUTTE STOCKPILE SITE**  
**DEWEY COUNTY**

CLASS A RIPRAP STOCKPILE

PCN I3C5



**Eagle Butte Stockpile Site**  
**Stockpile Number 3775R**  
**Dewey County**  
**(SW1/4 SEC 12 T12N R23E)**



**INDEX OF PLAN SHEETS**

SHEET NO. 1                    LAYOUT MAPS  
SHEET NO. 2                    INDEX OF PLAN SHEETS AND ESTIMATE OF QUANTITIES  
SHEET NO. 3                    SPECIFICATIONS & NOTES  
SHEET NO. 4                    STANDARD PLATES

**ESTIMATE OF QUANTITIES**

<b>Bid Item Number</b>	<b>Item</b>	<b>Quantity</b>	<b>Unit</b>
009E0010	Mobilization	Lump Sum	LS
700E0110	Class A Riprap	250.0	Ton

## **SPECIFICATIONS**

Standard Specifications for Roads and Bridges, 2004 Edition and Required Provisions, Supplemental Specifications and Special Provisions as included in the Proposal.

## **STOCKPILE CONSTRUCTION**

The Contractor shall find out the exact location to place the stockpile at and also the desired shape of the finished stockpile. If the shape and location are not done properly as per the Maintenance Supervisors instructions, the Contractor shall correct the stockpile before any payment for materials is made.

## **CLASS A RIPRAP**

Class A riprap shall conform to the requirements of the Specifications (Section 830) and shall be furnished by the Contractor.

The contract unit price per ton shall include all costs for furnishing and stockpiling the Class A riprap.

## **MAINTENANCE OF TRAFFIC**

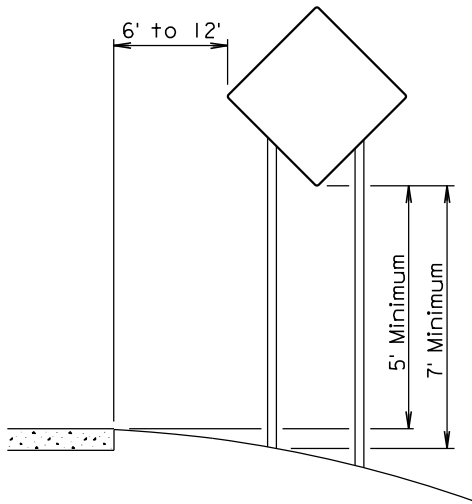
The Contractor shall furnish and install 48" x 48" TRUCK CROSSING signs, W8-6, to be placed on State or County highways or other well-traveled roadways. The signs shall be located a minimum of 550' in advance of intersections and approaches to the highway where the haul route crosses or turns onto/from the highway. The TRUCK CROSSING signs shall be installed for both directions of traffic travel. The exact number and location of the signs will be determined based on the pit location and haul road approved for use.

The TRUCK CROSSING signs shall be displayed at all times when the haul vehicles are hauling material from the pit to the stockpile site. During non-working hours, the fixed signs shall be covered and the portable signs shall be removed from view. Hinged signs may be used.

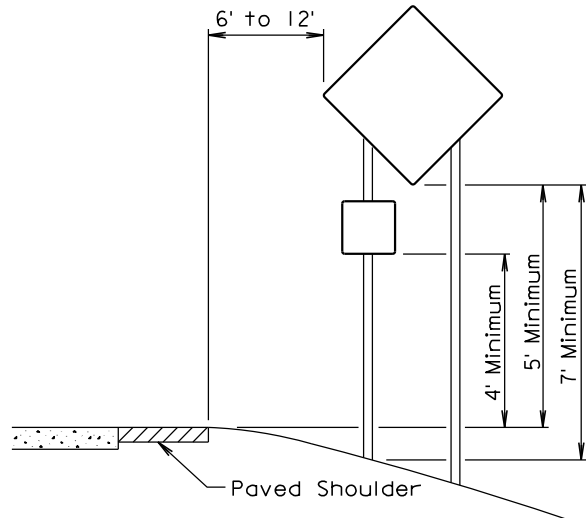
There will be no direct payment for the TRUCK CROSSING signs. All costs for furnishing, installing, maintaining and removing the signs shall be incidental to other contract items.

## **HAUL ROADS**

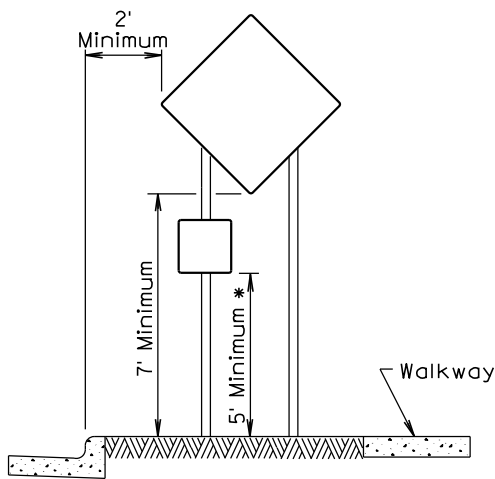
The Contractor shall be responsible for any haul roads used to transport material to the stockpile site. The State will not participate in the cost of restoration of any haul roads used by the Contractor.



RURAL DISTRICT

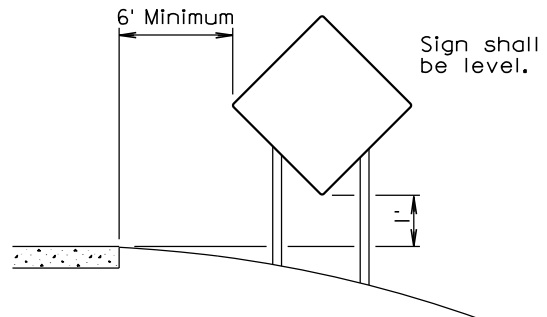


RURAL DISTRICT WITH  
 SUPPLEMENTAL PLATE



URBAN DISTRICT

\* If the bottom of supplemental plate is mounted lower than 7 feet above a pedestrian walkway, the supplemental plate should not project more than 4" into the pedestrian facility.



RURAL DISTRICT  
 3 DAY MAXIMUM

(Not applicable to regulatory signs)

September 22, 2014

Published Date: 1st Qtr. 2015

**S  
D  
D  
O  
T**

**CRASHWORTHY SIGN SUPPORTS**  
 (Typical Construction Signing)

PLATE NUMBER  
 634.85

Sheet 1 of 1