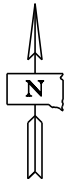
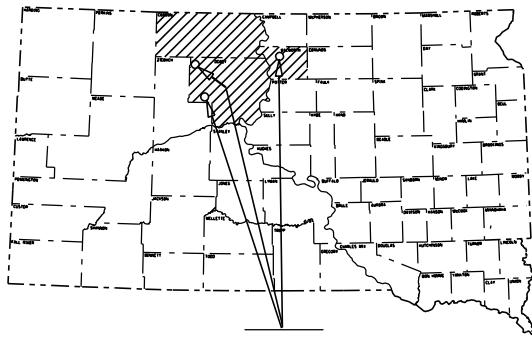


STATE OF SOUTH DAKOTA
DEPARTMENT OF TRANSPORTATION
 PLANS FOR PROPOSED

PROJECTS 3781C, 3763C & 3775C
SDDOT ISABEL MAINTENANCE YARD,
SELBY STOCKPILE SITE,
EAGLE BUTTE STOCKPILE SITE
DEWEY AND WALWORTH COUNTIES

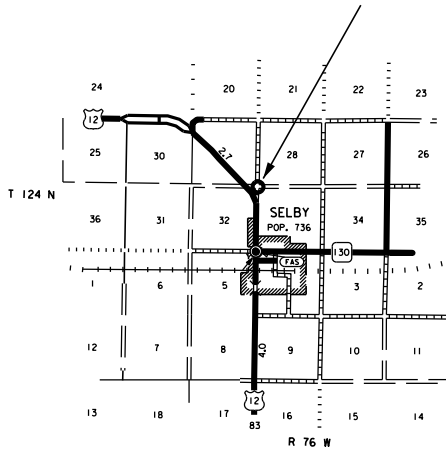
COVER AGGREGATE STOCKPILES

PCN i3pn, i3pl & i3pm

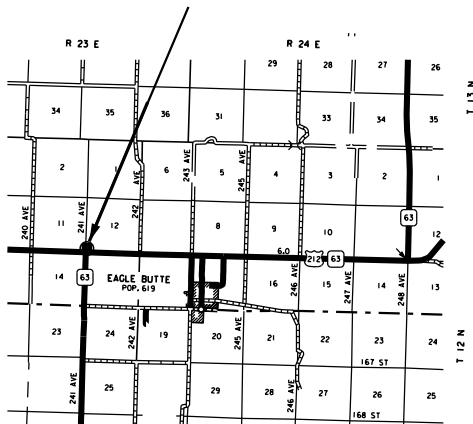


NO SCALE

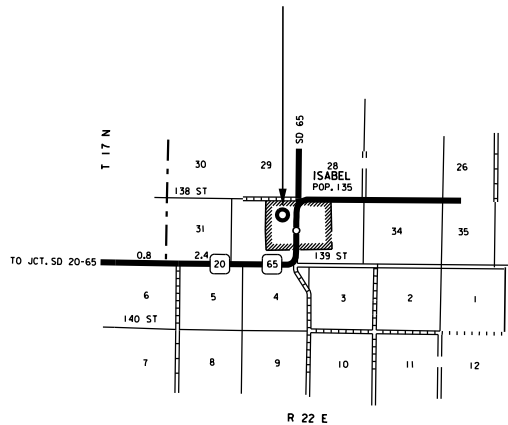
Selby Stockpile Site
Stockpile Number 3763C
Walworth County
 (NW1/4 SEC 32 T124N R76W)



Eagle Butte Stockpile Site
Stockpile Number 3775C
Dewey County
 (SW1/4 SEC 12 T12N R23E)



Isabel Maintenance Yard
Stockpile Number 3781C
Dewey County
 (SE1/4 SEC 32 T17N R22E)



INDEX OF PLAN SHEETS

SHEET NO. 1	LAYOUT MAPS
SHEET NO. 2	INDEX OF PLAN SHEETS AND ESTIMATE OF QUANTITIES
SHEET NO. 3	SPECIFICATIONS & NOTES
SHEET NO. 4	STANDARD PLATES

ESTIMATE OF QUANTITIES

Bid Item Number	Item	Quantity	Unit
009E0010	Mobilization	Lump Sum	LS
360E1200	Modified Cover Aggregate (Isabel Maintenance Yard) Stockpile # 3781C	3000	Ton
360E1200	Modified Cover Aggregate (1 Mi. N. of Selby on US12-83) Stockpile # 3763C	3000	Ton
360E1200	Modified Cover Aggregate (2 Mi. W. of Eagle Butte Jct. US 212 & SD 63) Stockpile # 3775C	3000	Ton

SPECIFICATIONS

Standard Specifications for Roads and Bridges, 2004 Edition and Required Provisions, Supplemental Specifications and Special Provisions as included in the Proposal.

MODIFIED COVER AGGREGATE

Aggregate for Cover Aggregate shall conform to the following gradation requirements:

Passing a 3/8 Inch Sieve	100%
Passing a No. 4 Sieve	0-75%
Passing a No. 8 Sieve	0-30%
Passing a No. 40 Sieve	0-6%
Passing a No. 200 Sieve	0-3.0%

Aggregate may be crushed or uncrushed.

All other requirements of the Specifications (Section 881) for Type 1B shall apply.

The contract unit price per ton shall include all costs for furnishing and stockpiling the modified cover aggregate.

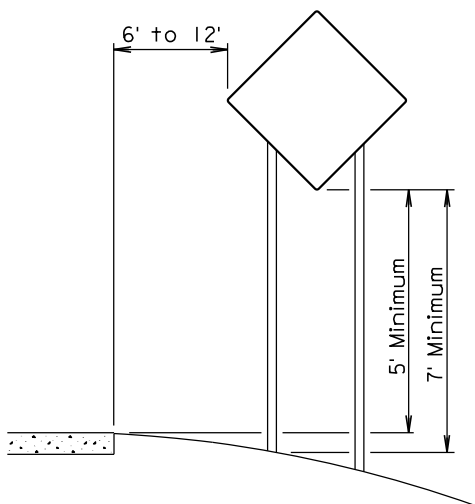
MAINTENANCE OF TRAFFIC

The Contractor shall furnish and install 48" x 48" TRUCK CROSSING signs, W8-6, to be placed on State or County highways or other well-traveled roadways. The signs shall be located a minimum of 550' in advance of intersections and approaches to the highway where the haul route crosses or turns onto/from the highway. The TRUCK CROSSING signs shall be installed for both directions of traffic travel. The exact number and location of the signs will be determined based on the pit location and haul road approved for use.

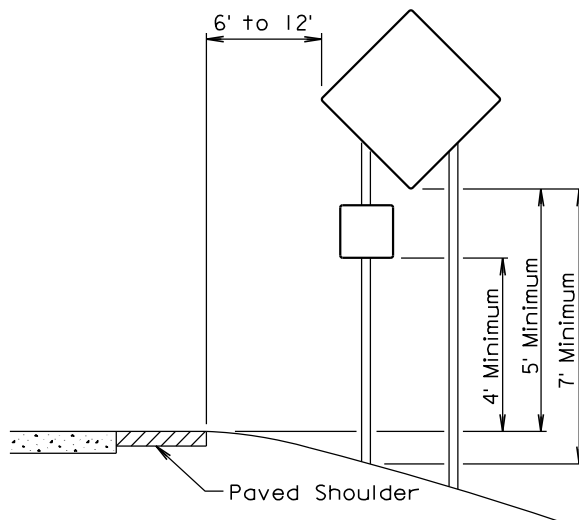
The TRUCK CROSSING signs shall be displayed at all times when the haul vehicles are hauling material from the pit to the stockpile site. During non-working hours, the signs shall be covered or removed from view. Hinged signs may be used. There will be no direct payment for the TRUCK CROSSING signs. All costs for furnishing, installation, maintenance and removal of the signs shall be absorbed in the various contract items.

HAUL ROADS

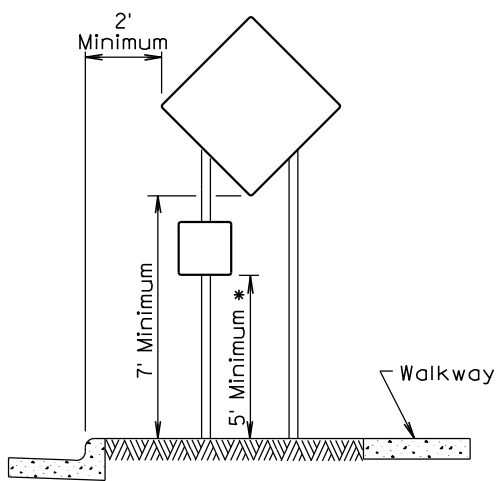
The Contractor shall be responsible for any haul roads used to transport material to the stockpile site. The State will not participate in the cost of restoration of any haul roads used by the Contractor.



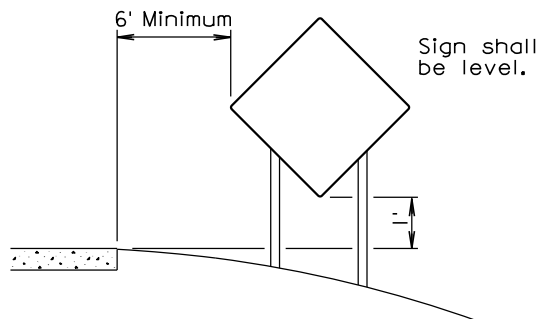
RURAL DISTRICT



RURAL DISTRICT WITH
 SUPPLEMENTAL PLATE



URBAN DISTRICT



RURAL DISTRICT
 3 DAY MAXIMUM
 (Not applicable to regulatory signs)

* If the bottom of supplemental plate is mounted lower than 7 feet above a pedestrian walkway, the supplemental plate should not project more than 4" into the pedestrian facility.

September 22, 2014

<p><i>Published Date: 1st Qtr. 2015</i></p>	<p>S D D O T</p>	<p>CRASHWORTHY SIGN SUPPORTS <i>(Typical Construction Signing)</i></p>	<p>PLATE NUMBER 634.85</p>
			<p>Sheet 1 of 1</p>