

## **Department of Transportation**

### **Rapid City Region Office**

**2300 Eglin Street**

**P.O. Box 1970**

**Rapid City, SD 57709-1970**

**Phone: 605/394-2244**

**FAX: 605/394-1904**

December 3, 2015

### **ADDENDUM NO. 1**

RE: December 8, 2015 Rapid City Region Office Informal Letting  
044WF-452, Pennington County, PCN i3y1 & i3y2  
Reconstruct Service Road, AC Resurfacing, Install Speed  
Humps and Access Consolidation

### **TO WHOM IT MAY CONCERN:**

The following addenda to the plans shall be inserted and made part of your proposal for the referenced project.

### **PROPOSAL:**

- Please replace the DOT-123 with the attached DOT-123.
- Insert the special provision for subletting.

### **PLANS:**

- The Insert Steel Bar in PCC Pavement was added to tie the new curb and gutter to the existing PCCP. Replace sheet 2 and 8 and add 37A with the attached.

Sincerely,

---

John Rehorst  
Region Design Engineer

# SOUTH DAKOTA DEPARTMENT OF TRANSPORTATION CONTRACT PROPOSAL

DOT-123  
(5/05)

CODE	PRE	PROJECT ROUTE	AGR	MAINT UNIT	CONTROL REFERENCE	AFE	FUNCTION	BEGIN MRM	END MRM
		044 WF		452		i3y1	2129	0490	0492
		044 WF		452		i3y2	2129	0492	0494

CITY AND /OR COUNTY Pennington

BUDGET SOURCE FY16 Cont. Maint.

FINALS ENGINEER REVIEW REQUIRED

☒ YES ☐ NO

REGION MATERIALS CERTIFICATION REQUIRED

☒ YES ☐ NO

CERTIFIED INSPECTORS/TESTERS REQUIRED

☒ YES ☐ NO

TO BE INSTALLED ON THE CM&P

☒ YES ☐ NO

TYPE, PURPOSE AND LOCATION OF WORK Reconstruct Service Road, AC Resurfacing, Install Speed Humps and Access Consolidation

PREQUALIFICATION WORK TYPE: \_\_\_\_\_ PROJECT DBE GOAL: \_\_\_\_\_

## ESTIMATE OF QUANTITIES AND COST

BID ITEM NUMBER	ITEM	QUANTITY	UNIT	UNIT PRICE	AMOUNT
	<b>044WF-452 PCN i3v1</b>				
009E0010	Mobilization	Lump Sum	LS		
320E1200	Asphalt Concrete Composite	140.5	Ton		
332E0010	Cold Milling Asphalt Concrete	1266	SqYd		
634E0010	Flagging	20	Hour	\$23.55	\$471.00
634E0110	Traffic Control Signs	180	SqFt		
634E0120	Traffic Control, Miscellaneous	Lump Sum	LS		
900E0010	Refurbish Single Mailbox	2	Each		
900E0012	Refurbish Double Mailbox	4	Each		
	<b>044WF-452, PCN i3v2</b>				
009E0010	Mobilization	Lump Sum	LS		
110E0300	Remove Concrete Curb and Gutter	220	Ft		
110E0600	Remove Fence	100	Ft		
120E0010	Unclassified Excavation	5409	CuYd		
120E2000	Undercutting	2415	CuYd		
120E6200	Water for Granular Material	36.6	MGal		
230E0100	Remove and Replace Topsoil	Lump Sum	LS		
250E0020	Incidental Work, Grading	Lump Sum	LS		
260E1010	Base Course	1824.9	Ton		
320E1200	Asphalt Concrete Composite	778.8	Ton		
332E0010	Cold Milling Asphalt Concrete	22	SqYd		
380E6110	Insert Steel Bar in PCC Pavement	88	Each		
450E4759	18" CMP 16 Gauge, Furnish	72	Ft		
450E4760	18" CMP, Install	72	Ft		
450E5406	18" CMP Safety End, Furnish	2	Each		
450E5407	18" CMP Safety End, Install	2	Each		
451E6080	Adjust Water Valve Box	1	Each		
632E1320	2.0" x 2.0" Perforated Tube Post	56	Ft		
632E2535	Type 4 Object Marker	3	Each		
632E3203	Flat Aluminum Sign, Nonremovable Copy High Intensity	45.2	SqFt		
633E0010	Cold Applied Plastic Pavement Marking 4"	150	Ft		
633E0025	Cold Applied Plastic Pavement Marking 12"	64	Ft		
633E0040	Cold Applied Plastic Pavement Marking, Arrow	1	Each		
633E5000	Grooving for Cold Applied Plastic Pavement Marking 4"	150	Ft		

633E5010	Grooving for Cold Applied Plastic Pavement Marking 12"	64	Ft		
633E5025	Grooving for Cold Applied Plastic Pavement Mkg Arrow	1	Each		
634E0010	Flagging	40	Hour	\$23.55	\$942.00
634E0110	Traffic Control Signs	192	SqFt		
634E0120	Traffic Control, Miscellaneous	Lump Sum	LS		
634E0285	Type 3 Barricade, 8' Double Sided	1	Each		
634E0420	Type C Advance Warning Arrow Board	1	Each		
650E0100	Type B610 Concrete Curb and Gutter	125	Ft		
650E4700	Type P10 Concrete Gutter	95	Ft		
730E0210	Type F Permanent Seed Mixture	45	Lb		
731E0100	Fertilizing	2607	Lb		
732E0250	Fiber Mulching	3477	Lb		
734E0154	12" Diameter Erosion Control Wattle	342	Ft		
900E0010	Refurbish Single Mailbox	8	Each		
900E0012	Reburfish Double Mailbox	2	Each		
				TOTAL	

### CONTRACTORS PROPOSAL STATEMENT

The undersigned does hereby agree to furnish the labor and/or material in the quantities, at the unit price, for the purpose and in the place all in accordance with attached provisions upon approval of this Proposal by the State Transportation Commission. This document becomes the contract when signed by the Contractor and a Department of Transportation Representative. The Contractor agrees to provide services in compliance with the Americans with Disabilities Act of 1990. The Contractor agrees to provide a certificate of insurance prior to commencing work, for liability coverage for the duration of the work as per the current edition of the SDDOT Standard Specifications for Roads and Bridges.

**PROPOSED START DATE** December 29, 2015

**SUBSTANTIAL COMPLETION REQUIREMENT** \_\_\_\_\_

**FIELD WORK COMPLETION REQUIREMENT** September 1, 2016 and as per Special Provision

**SUBSCRIBED AND SWORN TO BEFORE ME THE**  
 \_\_\_\_\_ **DAY OF** \_\_\_\_\_, 20\_\_\_\_

**SIGNATURE** \_\_\_\_\_  
**COMPANY** \_\_\_\_\_  
**ADDRESS** \_\_\_\_\_

**NOTARY – My Commission Expires** \_\_\_\_\_ **FED. TAX ID NUMBER** \_\_\_\_\_

**RECOMMENDED FOR APPROVAL:**

\_\_\_\_\_  
**CONSTRUCTION/MAINTENANCE ENGR. DATE**

\_\_\_\_\_  
**REGION ENGINEER DATE**

\_\_\_\_\_  
**DIRECTOR OF OPERATIONS DATE**

**APPROVED FOR THE TRANSPORTATION COMMISSION**

**NAME** \_\_\_\_\_ **TITLE** \_\_\_\_\_ **DATE** \_\_\_\_\_

**APPROVED as per Federal Highway Stewardship Provisions this** \_\_\_\_\_ **day of** \_\_\_\_\_, 20\_\_\_\_

\_\_\_\_\_  
**PROJECT DEVELOPMENT ENGINEER**

**STATE OF SOUTH DAKOTA  
DEPARTMENT OF TRANSPORTATION**

**SPECIAL PROVISION  
FOR  
SUBLETTING OF CONTRACT**

**PROJECT 044 WF-452, PCN i3y1 & i3y2  
PENNINGTON COUNTY**

**DECEMBER 2, 2015**

---

**Delete Section 8.1 of the specifications and replace with the following:**

- 8.1 SUBLETTING OF CONTRACT** - The Contractor shall not sublet, sell, transfer, assign, or dispose of the contract or contracts or any portion of them, without written consent of the Engineer. Each request to sublet shall be submitted on the form provided by the Engineer. The Contractor shall submit a request to sublet for any contracting firms a subcontractor proposes to use as a lower tier subcontractor. The Contractor shall obtain approval of each subcontractor before the start of the work performed by the subcontractor.

The Contractor will be permitted to sublet up to 70 percent of the contract amount, based on the contract unit prices, but shall perform work amounting to not less than 30 percent of the total contract amount with his own organization.

The Department will consider the Contractor's own organization to include only workers employed and paid directly by the Contractor, equipment owned or rented by the Contractor, and materials purchased by the Contractor for its use in performing Contract work. This does not include employees, equipment, or materials purchased by or incorporated into work of any subcontractor, assignee, or agent of the Contractor.

The Department will not consider as subcontracting the following; 1) any material produced outside the project limits including but not limited to the production of sand, gravel, crushed stone, batched concrete aggregates, ready mix concrete, off-site fabricated structural steel, other off-site fabricated items, and any materials delivered by established and recognized commercial plants; or 2) delivery of these materials to the work site from an off-site location in vehicles owned or operated by such plants or by recognized independent or commercial hauling companies. Project limits is defined as being within a 1/2 mile radius of the project proper.

Any items designated in the contract as "specialty items" may be performed by subcontract and the cost of designated specialty items performed by subcontract will be deducted from the total contract amount before computing the amount of work required to be performed by the Contractor's own organization.

The Contractor shall give assurance to the Engineer that all pertinent provisions of the prime contract including minimum wage for labor shall apply to the work sublet. Subcontract, or transfer of contract, shall not relieve the Contractor of his responsibilities and liability under the contract and bonds.

\* \* \* \* \*

ESTIMATE OF QUANTITIES

I3y1

BID ITEM NUMBER	ITEM	QUANTITY	UNIT
009E0010	Mobilization	Lump Sum	LS
320E1200	Asphalt Concrete Composite	140.5	Ton
332E0010	Cold Milling Asphalt Concrete	1,266	SqYd
634E0010	Flagging	20.0	Hour
634E0110	Traffic Control Signs	180	SqFt
634E0120	Traffic Control, Miscellaneous	Lump Sum	LS
900E0010	Refurbish Single Mailbox	2	Each
900E0012	Refurbish Double Mailbox	4	Each

I3y2

BID ITEM NUMBER	ITEM	QUANTITY	UNIT
009E0010	Mobilization	Lump Sum	LS
110E0300	Remove Concrete Curb and Gutter	220	Ft
110E0600	Remove Fence	100	Ft
120E0010	Unclassified Excavation	5,409	CuYd
120E2000	Undercutting	2,415	CuYd
120E6200	Water for Granular Material	36.6	MGal
230E0100	Remove and Replace Topsoil	Lump Sum	LS
250E0020	Incidental Work, Grading	Lump Sum	LS
260E1010	Base Course	1,824.9	Ton
320E1200	Asphalt Concrete Composite	778.8	Ton
332E0010	Cold Milling Asphalt Concrete	22	SqYd
380E6110	Insert Steel Bar in PCC Pavement	88	Each
450E4759	18" CMP 16 Gauge, Furnish	72	Ft
450E4760	18" CMP, Install	72	Ft
450E5406	18" CMP Safety End, Furnish	2	Each
450E5407	18" CMP Safety End, Install	2	Each
451E6080	Adjust Water Valve Box	1	Each
632E1320	2.0"x2.0" Perforated Tube Post	56.0	Ft
632E2535	Type 4 Object Marker	3	Each
632E3203	Flat Aluminum Sign, Nonremovable Copy High Intensity	45.2	SqFt
633E0010	Cold Applied Plastic Pavement Marking, 4"	150	Ft
633E0025	Cold Applied Plastic Pavement Marking, 12"	64	Ft
633E0040	Cold Applied Plastic Pavement Marking, Arrow	1	Each
633E5000	Grooving for Cold Applied Plastic Pavement Marking, 4"	150	Ft
633E5010	Grooving for Cold Applied Plastic Pavement Marking, 12"	64	Ft
633E5025	Grooving for Cold Applied Plastic Pavement Marking, Arrow	1	Each
634E0010	Flagging	40.0	Hour
634E0110	Traffic Control Signs	192	SqFt
634E0120	Traffic Control, Miscellaneous	Lump Sum	LS
634E0285	Type 3 Barricade, 8' Double Sided	1	Each
634E0420	Type C Advance Warning Arrow Board	1	Each
650E0100	Type B610 Concrete Curb and Gutter	125	Ft
650E4700	Type P10 Concrete Gutter	95	Ft
730E0210	Type F Permanent Seed Mixture	45	Lb
731E0100	Fertilizing	2,607	Lb
732E0250	Fiber Mulching	3,477	Lb
734E0154	12" Diameter Erosion Control Wattle	342	Ft
900E0010	Refurbish Single Mailbox	8	Each
900E0012	Refurbish Double Mailbox	2	Each

SPECIFICATIONS

Standard Specifications for Roads and Bridges, 2015 Edition and Required Provisions, Supplemental Specifications, and Special Provisions as included in the Proposal.

ENVIRONMENTAL COMMITMENTS

An Environmental Commitment is a measure that SDDOT commits to implement in order to avoid, minimize, and/or mitigate a real or potential environmental impact. Environmental commitments to various agencies and the public have been made to secure approval of this project. An agency mentioned below with permitting authority can influence a project if perceived environmental impacts have not been adequately addressed. Unless otherwise designated, the Contractor's primary contact regarding matters associated with these commitments will be the Project Engineer. These environmental commitments are not subject to change without prior written approval from the SDDOT Environmental Office. The environmental commitments associated with this project are as follows:

COMMITMENT B: FEDERALLY THREATENED, ENDANGERED, AND PROTECTED SPECIES

COMMITMENT B2: WHOOPING CRANE

The Whooping Crane is a spring and fall migratory bird in South Dakota that is about 5 feet tall and typically stops on wetlands, rivers, and agricultural lands along their migration route. An adult Whooping Crane is white with a red crown and a long, dark, pointed bill. Immature Whooping Cranes are cinnamon brown. While in flight, their long necks are kept straight and their long dark legs trail behind. Adult Whooping Cranes' black wing tips are visible during flight.

Action Taken/Required:

Harassment or other measures to cause the Whooping Crane to leave the site is a violation of the Endangered Species Act. If a Whooping Crane is sighted roosting in the vicinity of the project, borrow pit, or staging site associated with the project, cease construction activities in the affected area until the Whooping Crane departs and contact the Project Engineer. The Project Engineer will contact the Environmental Office so that the sighting can be reported to USFWS.

**SIGN LEGEND, BORDER, BACKGROUND, AND MOUNTING**

All sign material shall comply with Section 982 of the Specifications for Roads & Bridges, 2004 Edition.

The sign colors shall be as stipulated in the MUTCD.

When signs are vertically mounted in succession, they shall be 1-2 inches apart. Lateral placement of signs shall be determined by the Engineer.

**TRAFFIC CONTROL – GENERAL NOTES**

1. Requests to deviate from the sequence of operations shall be submitted in writing to the Engineer for review. Approval of an alternate sequence of operations will only be allowed when the proposed changes meet with the Department's intent for traffic control and sequencing of the work. An alternate sequence shall be submitted for review a minimum of one week prior to potential implementation.
2. Unless otherwise stated in these plans, no work will be allowed during hours of darkness.
3. Indiscriminate driving and parking of vehicles within the right-of-way will not be permitted. Any damage of the vegetation, surfacing, embankment, delineators, and existing signs resulting from such indiscriminate use shall be repaired and/or restored by the Contractor, at no expense to the State, and to the satisfaction of the Engineer.
4. Existing guide, route, informational logo, regulatory, warning signs and delineation shall be temporarily reset and maintained during construction as directed by the Engineer. Removing, relocating, salvaging and resetting of the above items shall be the responsibility of the Contractor.
5. Periods of inactivity shall be defined as no work taking place for a period of more than 48 hours.
6. Construction signing mounted on portable supports shall not be used for a duration of more than 3 days, unless approved by the Engineer. Construction signing that remains in the same location for more than 3 days shall be mounted on fixed location, ground mounted, breakaway supports.
7. Any delineators and signs damaged or lost shall be replaced by the Contractor at no cost to the State.
8. All materials and equipment shall be stored a minimum distance of 30' from the traveled way during nonworking hours.
9. The Contractor shall provide installation details at the preconstruction meeting for all breakaway sign support assemblies.
10. All haul trucks shall be equipped with a second flashing amber light that is visible from the backside of the haul truck. The costs for the flashing amber lights shall be incidental to the various related contract bid items.

11. All construction operations shall be conducted in the general direction of traffic movement.
12. If there is a discrepancy between the traffic control plans, standard plates, and the MUTCD – whichever is more stringent shall be used, as determined by the Engineer.
13. Temporary Flexible Vertical Markers (Tabs) shall be used for lane closure tapers or lane shift tapers and shall be installed at 5' spacing. Tabs used for tapers and shifts will not be measured for payment. All costs associated to furnish, install, maintain (including replacement as required by the Engineer at no added cost to the Department), and remove all markers will be incidental to the contract lump sum price for Traffic Control, Miscellaneous.

**INVENTORY OF TRAFFIC CONTROL DEVICES**

**PCN i3y1**

SIGN CODE	SIGN DESCRIPTION	NUMBER	SIGN SIZE	SQFT PER SIGN	SQFT
W20-1	ROAD WORK AHEAD	4	48" x 48"	16	64
W20-4	ONE LANE ROAD AHEAD	2	48" x 48"	16	32
W20-7	FLAGGER (symbol)	2	48" x 48"	16	32
W21-5	SHOULDER WORK	2	48" x 48"	16	32
G20-2	END ROAD WORK	4	36" x 18"	5	20
CONVENTIONAL ROAD TRAFFIC CONTROL SIGNS SQFT					180

**PCN i3y2**

SIGN CODE	SIGN DESCRIPTION	NUMBER	SIGN SIZE	SQFT PER SIGN	SQFT
R1-1	STOP	1	30" x 30"	6	6
W4-2	LEFT or RIGHT LANE ENDS (symbol)	1	48" x 48"	16	16
W20-1	ROAD WORK AHEAD	3	48" x 48"	16	48
W20-4	ONE LANE ROAD AHEAD	2	48" x 48"	16	32
W20-5	LEFT or RIGHT LANE CLOSED AHEAD	1	48" x 48"	16	16
W20-7	FLAGGER (symbol)	2	48" x 48"	16	32
W21-5	SHOULDER WORK	2	48" x 48"	16	32
G20-2	END ROAD WORK	2	36" x 18"	5	10
CONVENTIONAL ROAD TRAFFIC CONTROL SIGNS SQFT					192

**TYPE 3 BARRICADES**

ITEM DESCRIPTION	QUANTITY
Type 3 Barricade, 8' Double Sided	1 Each

**TABLE OF CONCRETE CURB AND GUTTER REMOVAL**

Table of Concrete Curb & Gutter Removal				
Station	to	Station	L/R	Quantity (Ft)
4+60.32		4+93.18	R	33
6+88.75		7+24.37	R	36
9+05.39		10+12.42	R	107
10+98.30		11+42.37	R	44
Total				220

**CONCRETE CURB AND GUTTER**

Included in the estimate of quantities are 88 bars to tie the new curb and gutter to the existing PCCP. The longitudinal joint shall be sealed as per standard plate 380.10. All costs associated with this work shall be incidental to the contract unit price per foot for the curb and gutter bid items.

**TABLE OF CONCRETE CURB AND GUTTER**

Table of Type B610 Concrete Curb & Gutter				
Station	to	Station	L/R	Quantity (Ft)
4+60.32		4+93.18	R	32.9
6+88.75		7+24.37	R	35.6
9+05.39		9+11.39	R	6.0
10+06.42		10+12.42	R	6.0
10+98.30		11+42.37	R	44.1
Total				124.6

Table of Type P10 Concrete Gutter				
Station	to	Station	L/R	Quantity (Ft)
9+11.39		10+06.42	R	95.0
				95.0

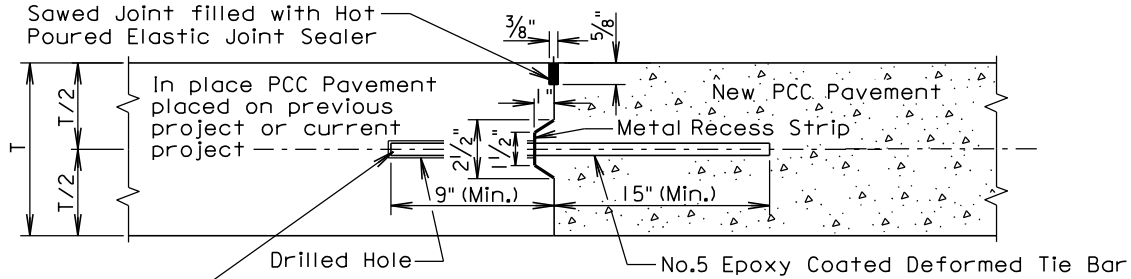
**REMOVE AND REPLACE TOPSOIL**

Prior to beginning grading operations, a 4" depth of topsoil shall be salvaged. Following completion of surfacing operations, topsoil shall be replaced to the point indicated on the typical section.

All costs associated with removing and replacing the topsoil shall be incidental to the contract lump sum price for Remove and Replace Topsoil.

LONGITUDINAL CONSTRUCTION JOINT WITH TIE BARS

(DRILLED IN BARS)

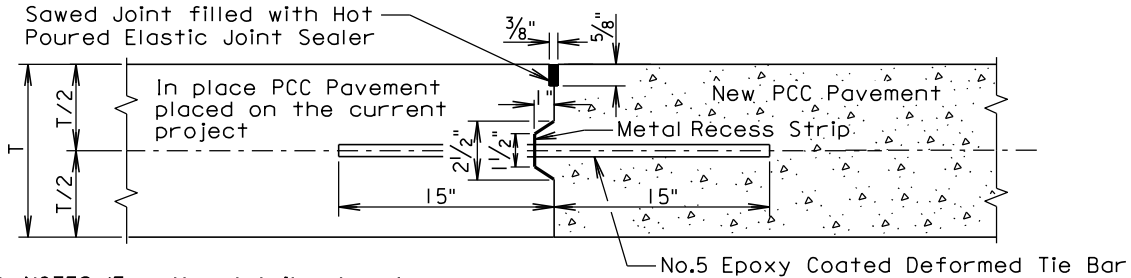


T = Pavement Thickness

The tie bars shall be embedded a minimum depth of 9 inches into the in place PCC pavement and anchored with an epoxy resin adhesive.

LONGITUDINAL CONSTRUCTION JOINT WITH TIE BARS

(INSERTED OR FORMED IN BARS)



GENERAL NOTES (For the details above):

The epoxy coated deformed tie bars shall be spaced in accordance with the following tables:

Tie Bar Spacing 48" Maximum	
Transverse Contraction Joint Spacing	Number of Tie Bars
6.5' to 10'	2
10.5' to 14'	3
14.5' to 18'	4
18.5' to 22'	5

Tie Bar Spacing 30" Maximum	
Transverse Contraction Joint Spacing	Number of Tie Bars
5' to 7'	2
7.5' to 9.5'	3
10' to 12'	4
12.5' to 14.5'	5
15' to 17'	6
17.5' to 19.5'	7
20' to 22'	8

The tie bars shall be placed a minimum of 15 inches from transverse contraction joints.

The required number of tie bars as shown in the table shall be uniformly spaced within each panel. The uniformly spaced tie bars shall be spaced a maximum of 48 inches center to center for a female keyway and shall be spaced a maximum of 30 inches center to center for a vertical face and male keyway. The maximum tie bar spacing shall apply to tie bars within each panel.

The keyway illustrated in the above details depict a female keyway.

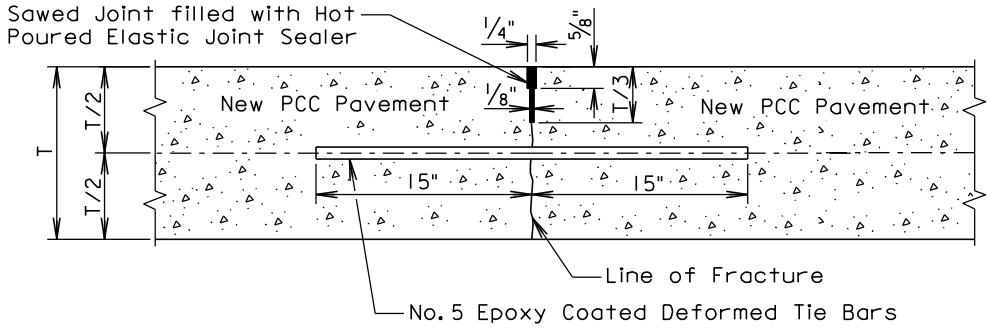
The keyway is optional and is not required. When concrete pavement is formed and a keyway is provided, a metal recess strip shall be used. When concrete pavement is slip formed, a metal recess strip is not required.

August 31, 2013

Published Date: 4th Qtr. 2015	S D D O T	PCC PAVEMENT LONGITUDINAL JOINTS WITH TIE BARS	PLATE NUMBER 380.10
			Sheet 1 of 2

SAWED LONGITUDINAL JOINT WITH TIE BARS

(POURED MONOLITHICALLY)



T = Pavement Thickness

GENERAL NOTES (For the detail above):

The epoxy coated deformed tie bars shall be spaced in accordance with the following table:

Tie Bar Spacing 48" Maximum	
Transverse Contraction Joint Spacing	Number of Tie Bars
6.5' to 10'	2
10.5' to 14'	3
14.5' to 18'	4
18.5' to 22'	5

The tie bars shall be placed a minimum of 15 inches from the transverse contraction joints.

The required number of tie bars as shown in the table shall be uniformly spaced within each panel with a maximum space of 48 inches center to center. The maximum tie bar spacing shall apply to tie bars within each panel.

The first saw cut to control cracking shall be a minimum of 1/3 the thickness of the pavement. Additional sawing for widening the saw cut to provide the width for the installation of the hot poured elastic joint sealer is necessary.

August 31, 2013

Published Date: 4th Qtr. 2015	S D D O T	PCC PAVEMENT LONGITUDINAL JOINTS WITH TIE BARS	PLATE NUMBER 380.10
			Sheet 2 of 2