

Department of Transportation

Aberdeen Region Office

West Highway 12

PO Box 1767

Aberdeen, South Dakota 57402-1767 605/626-2244

FAX: 605/626-7875

August 10, 2016

ADDENDUM NO. 1

Re: **014 W -168, PCN i47R**
Brookings County
Overheight Vehicle Impact Repair

TO WHOM IT MAY CONCERN:

PROPOSAL: No Changes

PLANS: Please destroy sheet 19 and replace with the enclosed sheet, dated 08/10/16.

Sheet 19: The weight of structure steel was modified and clarification was added as to the bolts to replace.

When sending in your sealed bid please state on the front of the envelope that Addendum No. 1 was received.

Sincerely,

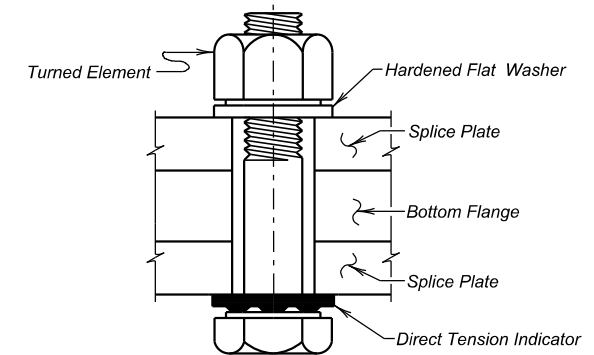
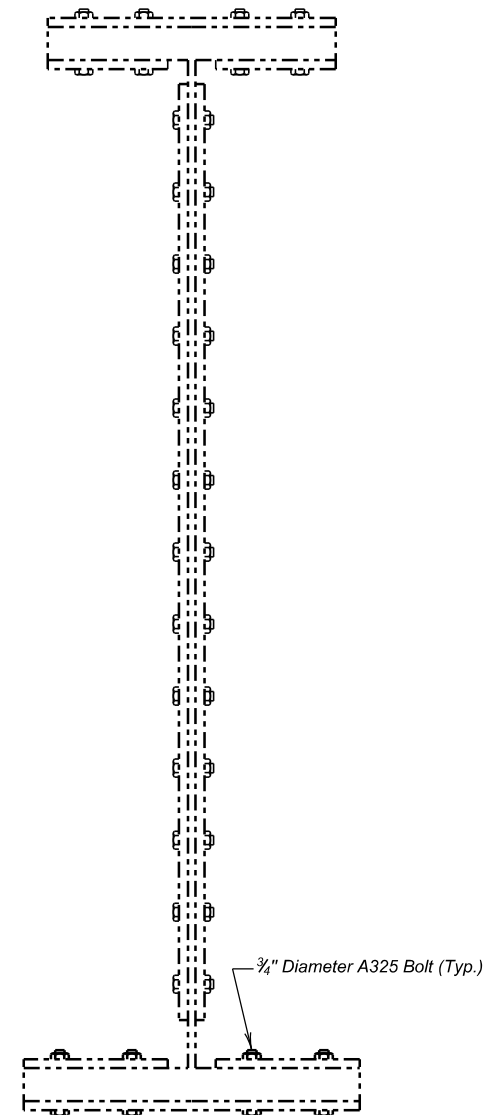
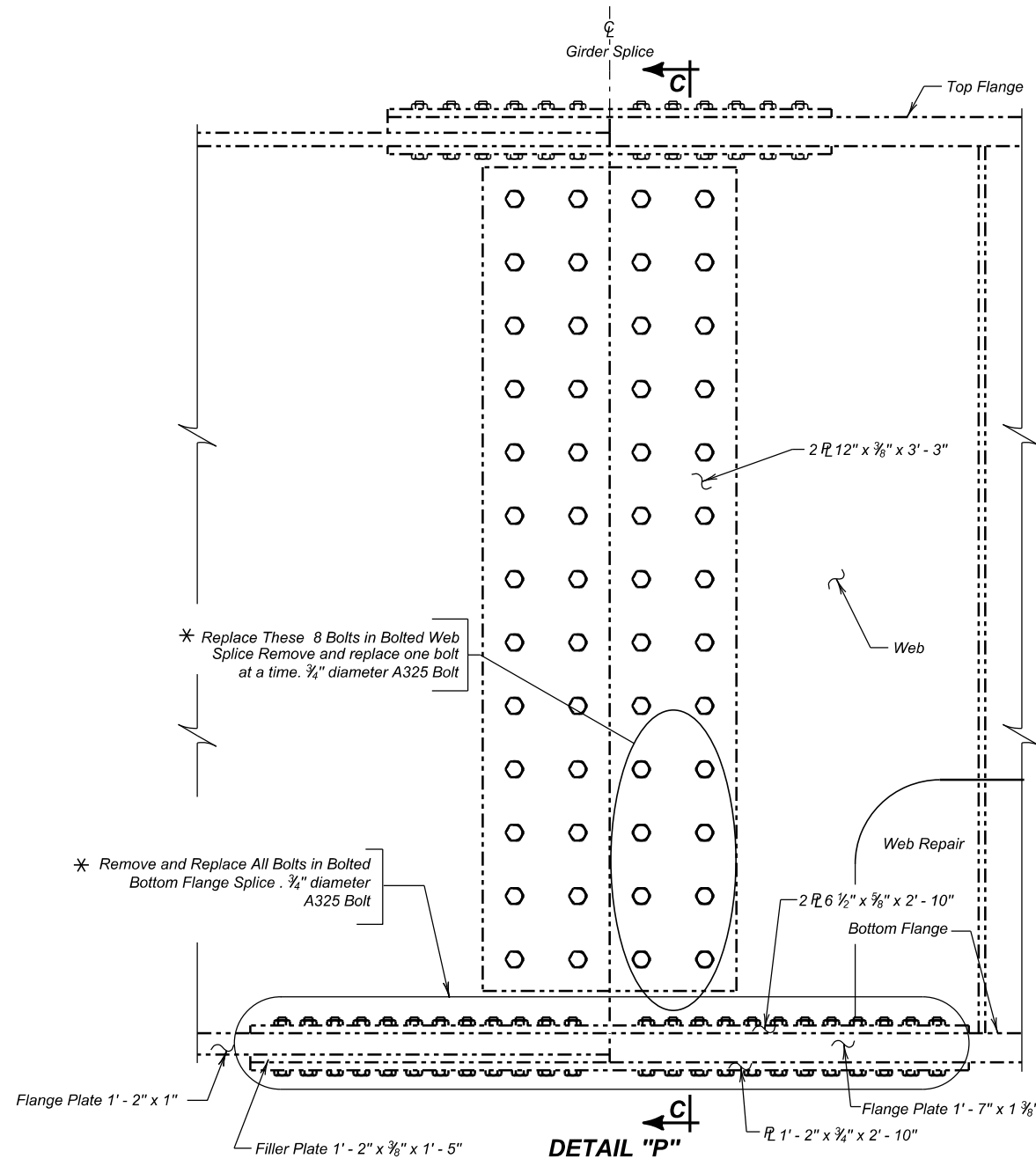
DEPARTMENT OF TRANSPORTATION

Jeff Senst, P.E.
Region Engineer

cc: **M. Brey** J. Humphrey J. Hansen J. Steen File

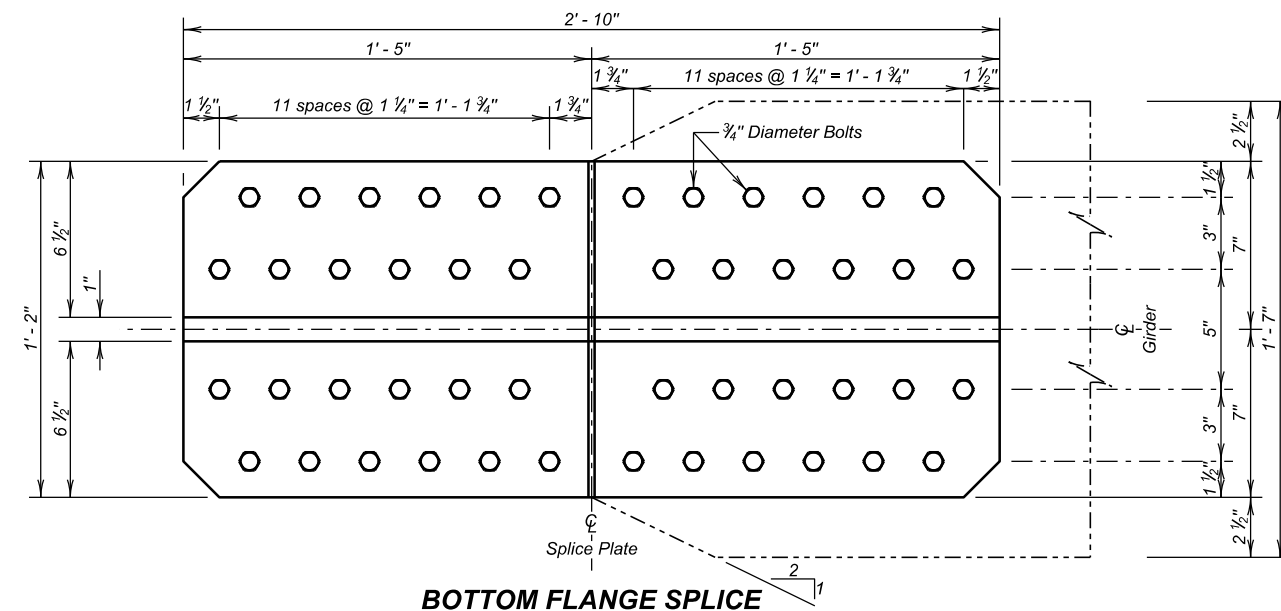
* Revised August 10, 2016 MM

STATE OF	PROJECT	SHEET NO.	TOTAL SHEETS
S.D.	014 W-168	19	26



ESTIMATED QUANTITIES		
ITEM	UNIT	QUANTITY
Incidental Work, Structure	Lump Sum	LS

* For informational purposes only, the estimated weight of the structural steel is 46 pounds.



GIRDER NO. 5 SPLICE BOLTS
REPLACEMENT DETAILS
FOR
373' - 0" CONT. COMP.,
HORIZ. CURVED, GIRDER BRIDGE
38' - 0" ROADWAY
OVER HWY 14
STR. NO. 06-154-150
3° - 00' HORIZ. CURVE
SEC. 15-T110N-R50W
014 W-168

BROOKINGS COUNTY
S. D. DEPT. OF TRANSPORTATION
JULY 2016

DESIGNED BY BWS BROK147R	CK. DES. BY MM I47RRA12	DRAFTED BY KR	Steve A. Johnson BRIDGE ENGINEER
--------------------------------	-------------------------------	------------------	-------------------------------------