

STATE OF SOUTH DAKOTA
 DEPARTMENT OF TRANSPORTATION
 PLANS FOR PROPOSED

STATE OF SOUTH DAKOTA	PROJECT	SHEET	TOTAL SHEETS
	016WB-452	1	4

Plotting Date: 11/16/2017

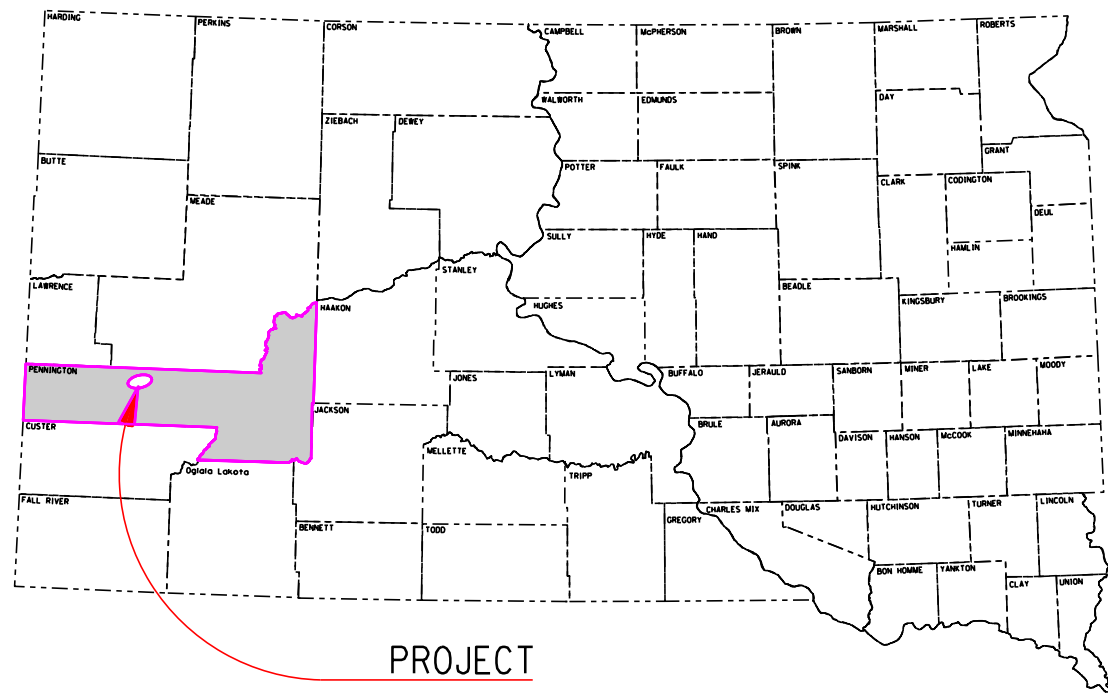
PROJECT 016WB-452
U.S. HIGHWAY 16B
PENNINGTON COUNTY

FURNISH TRAFFIC SIGNAL POLE

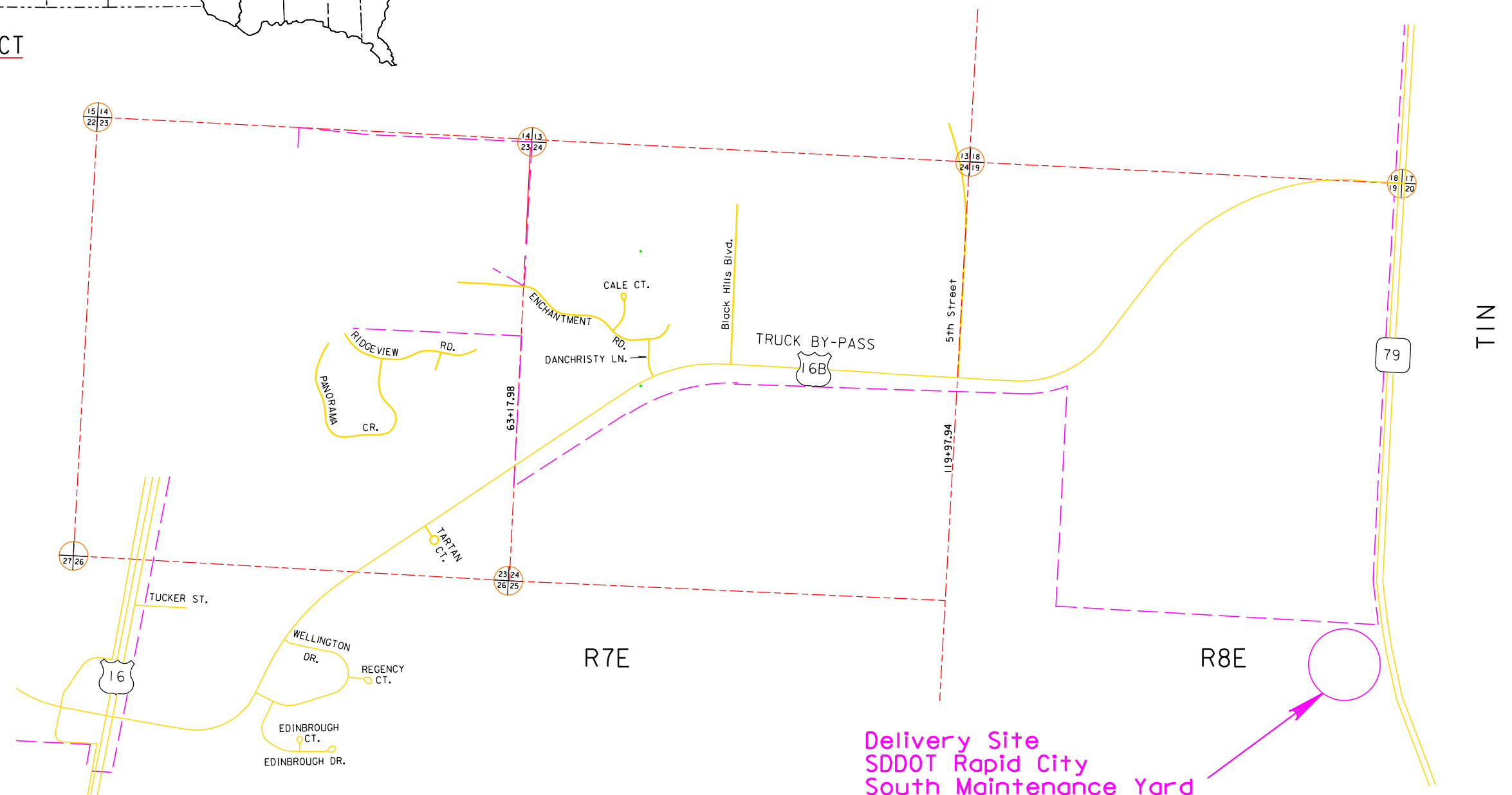
PCN I4YN

INDEX OF SHEETS

- Sheet 1: Title Sheet
- Sheet 2: Plan Notes and Quantities
- Sheet 3: Signal Pole Detail
- Sheet 4: Standard Plate



PROJECT



DESIGN DESIGNATION US16 WB

ADT (2016)	4405
ADT (2036)	7674
DHV	936
D	50%
T DHV	4.0%
T ADT	8.8%
V	60 mph

STORM WATER PERMIT
 None Required

SCALES

	RURAL	SUBURBAN	URBAN
PLAN	1"=200'	1"=100'	1"=40'
PROFILE	HORIZONTAL: 1"=200'	1"=100'	1"=40'
	VERTICAL: 1"=20'	1"=20'	1"=10'
CROSS SECTIONS	HORIZONTAL: 1"=40'	1"=20'	1"=20'
	VERTICAL: 1"=20'	1"=10'	1"=10'

Delivery Site
 SDDOT Rapid City
 South Maintenance Yard
 SD79, MRM 73.53

Plot Scale - 1:200

Plotted From - TRR011951

File - ...title_i4yn.dgn

ESTIMATE OF QUANTITIES

STATE OF SOUTH DAKOTA	PROJECT	SHEET	TOTAL SHEETS
	016WB-452	2	4

BID ITEM NUMBER	ITEM	QUANTITY	UNIT
009E0010	Mobilization	1	LS
635E2266	Signal Pole with 65' and 15' Mast Arms with Twin Luminaire Arms	1	Each

SPECIFICATIONS

Standard Specifications for Roads and Bridges, 2015 Edition and Required Provisions, Supplemental Specifications, and Special Provisions as included in the Proposal.

SHOP DRAWING AND CATALOG CUTS SUBMITTALS

The Contractor shall submit shop drawings and catalog cuts in accordance with Section 985 of the Specifications.

Adobe PDF submittals shall be sent to the following email addresses:

John.Less@state.sd.us
Pete.Longman@state.sd.us

SIGNAL POLE WITH 65' AND 15' MAST ARMS WITH TWIN LUMINAIRE ARMS

Both mast arms shall be rotatable (not Simplex connection).

POLES

Cantilever traffic signal supports, including anchor bolts, shall be designed for fatigue in accordance with Fatigue Importance Category III without galloping and truck induced gusts.

Luminaire extensions shall have a 50 Ft. mounting height with 6 Ft. arm.

GENERAL NOTES

The Contractor shall deliver the "Signal Pole with 65' and 15' Mast Arms with Twin Luminaire Arms" to the South Dakota Department of Transportation (SDDOT), Rapid City South Maintenance Yard, SD79, MRM 73.53, south of the Rapid City landfill. Maintenance staff at the Rapid City Maintenance Yard will assist in unloading of the poles. Contact Rapid City Area Engineer Mike Carlson, Phone No. (605) 394-1635 or Bob Smith 605-381-7174 a minimum of 5 business days in advance of pole delivery to make arrangements for assistance in unloading of poles.

All costs to deliver the "Signal Pole with 65' and 15' Mast Arms with Twin Luminaire Arms" shall be incidental to the contract unit price per each for "Signal Pole with 65' and 15' Mast Arms with Twin Luminaire Arms."

All contract items shall be delivered to the South Dakota Department of Transportation by March 30, 2018.

ANCHOR RODS

Anchor rods shall be furnished with the pole and shall be designed for a minimum footing diameter of 3 ft.

All costs to furnish and deliver the anchor rods shall be incidental to the contract unit price per each for "Signal Pole with 65' and 15' Mast Arms with Twin Luminaire Arms."

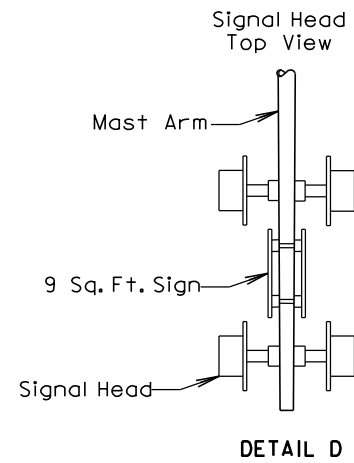
SPECIAL DETAIL

SIGNAL POLE (WITH MAST ARMS AND LUMINAIRE EXTENSIONS)

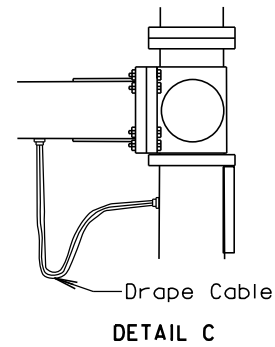
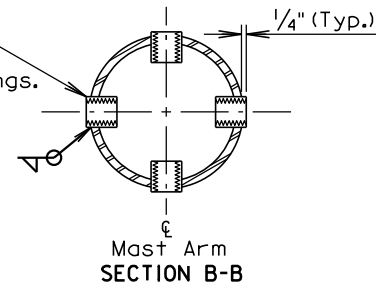
STATE OF SOUTH DAKOTA	PROJECT 016WB-452	SHEET 3	TOTAL SHEETS 4
-----------------------	----------------------	------------	-------------------

Plotting Date: 11/16/2017

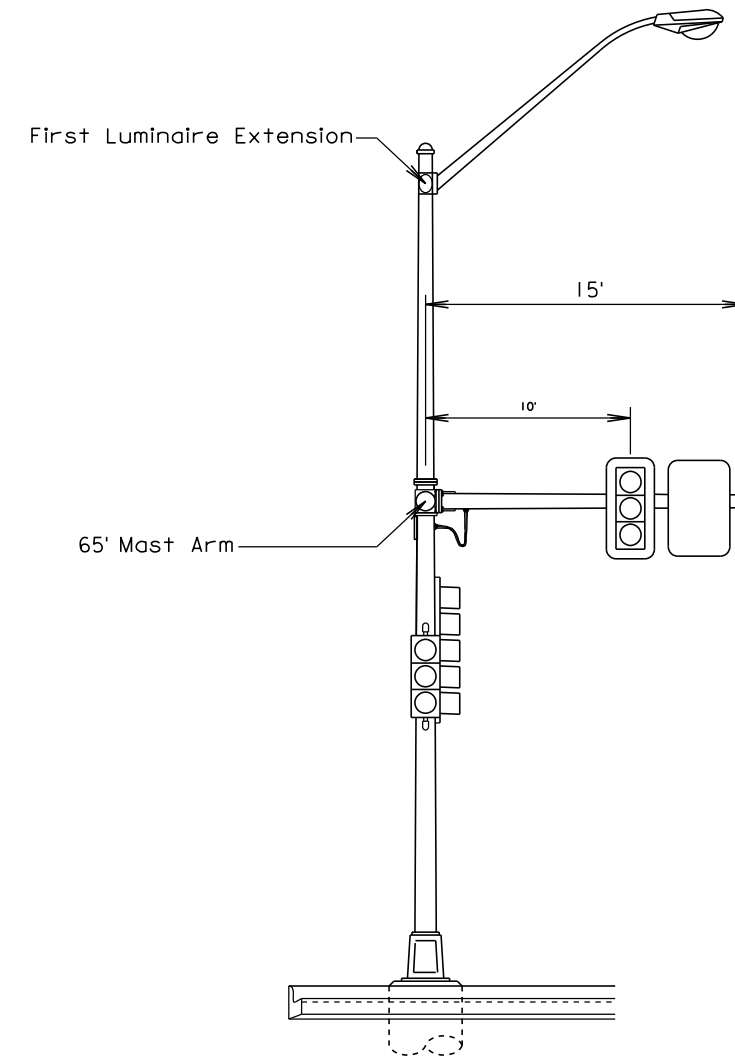
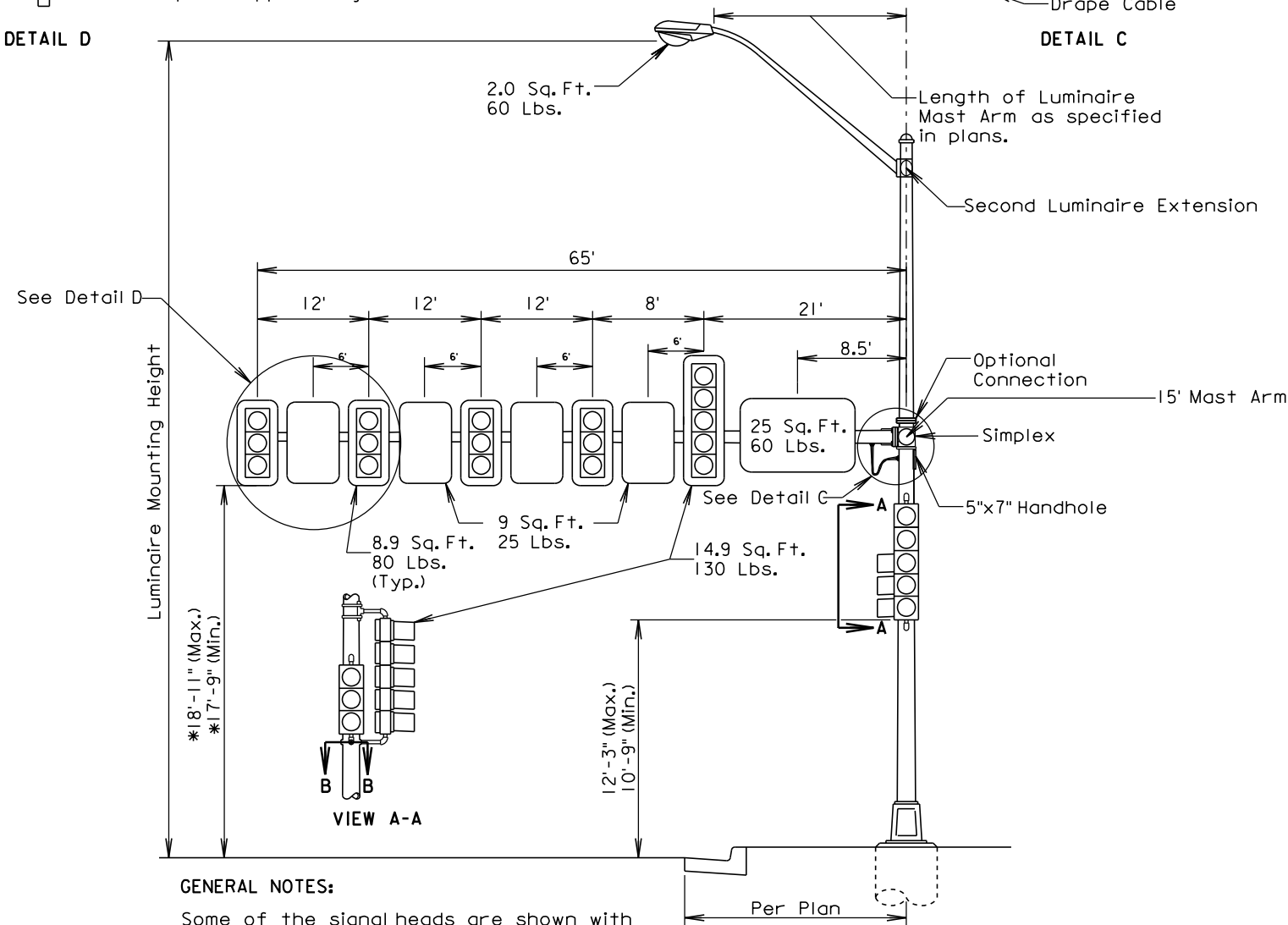
Plot Scale - 1:200



1 1/2" Half Coupling (4 required per pole as shown). Provide plugs for unused couplings.



Single Tube, Truss, or Davit types of mast arms are all acceptable, but only one type shall be provided for each contract. The mixing of different types is not permitted without special approval by the S.D.D.O.T.



GENERAL NOTES:

Some of the signal heads are shown with backplates removed so that the mounting hardware is visible.

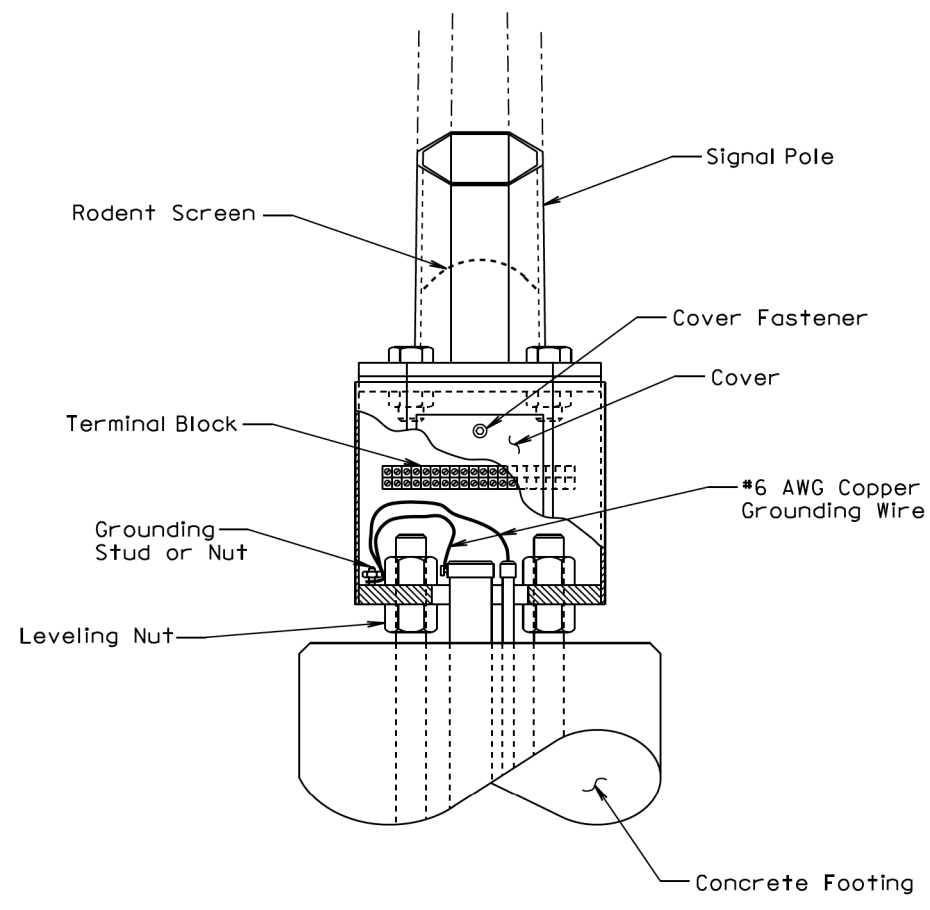
* The signal height allowances shown above are based on a horizontal distance greater than 53' between the signals and stop line. For horizontal distance of 53' and less between the signals and the stop line, the height allowances shall be as specified in Section 4D.15 of the MUTCD.

Plotted From - TRRC11951

File - ...SpecialDetail.dgn

STATE OF SOUTH DAKOTA	PROJECT	SHEET	TOTAL SHEETS
	016WB-452	4	4

Plotting Date: 11/16/2017



GENERAL NOTES:

Base details are provided for example only and are not intended to be a complete design.

The Contractor shall furnish and install a rodent screen in the signal pole above the transformer base. The rodent screen shall be a galvanized steel mesh with a maximum opening size of 1/4 inch. The rodent screen shall be friction fitted or installed by other methods approved by the Engineer.

All costs for furnishing and installing the rodent screen including labor, equipment, and materials shall be incidental to the contract unit price per each for the corresponding signal pole bid item.

December 23, 2008

S D D O T	TRANSFORMER SIGNAL POLE BASE	PLATE NUMBER 635.50
	<i>Published Date: 4th Qtr. 2017</i>	Sheet 1 of 1

Plot Scale - 1:200

- Plotted From - TRRC11951

File - ... \StdPlate1.dgn