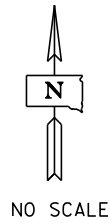
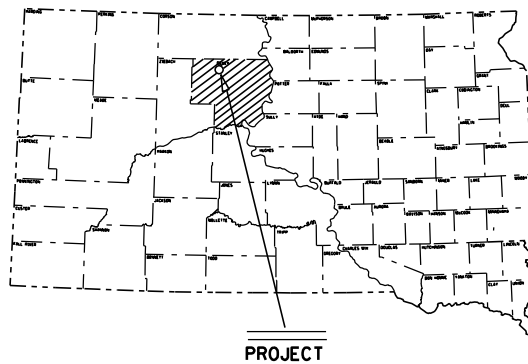


STATE OF SOUTH DAKOTA  
DEPARTMENT OF TRANSPORTATION  
PLANS FOR PROPOSED

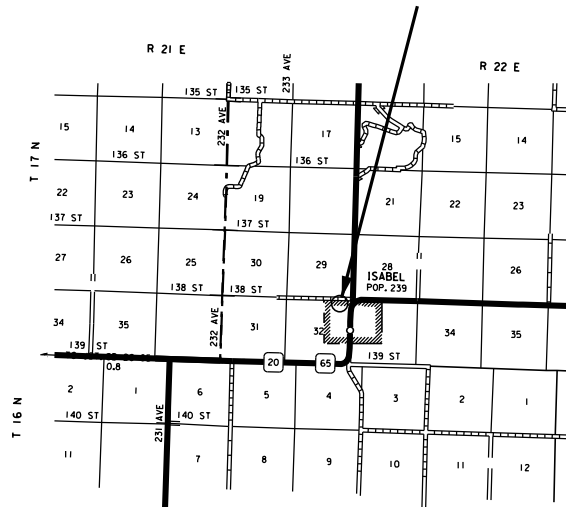
**PROJECT 3781C**  
**SDDOT ISABEL MAINTENANCE YARD**  
**DEWEY COUNTY**

**CRUSHED AGGREGATE STOCKPILE**

**PCN I50T**



**Isabel Maintenance Yard**  
**Stockpile Number 3781C**  
**Dewey County**  
**(NE1/4 SEC 32 T17N R22E)**



**INDEX OF PLAN SHEETS**

SHEET NO. 1	LAYOUT MAP
SHEET NO. 2	INDEX OF PLAN SHEETS AND ESTIMATE OF QUANTITIES
SHEET NO. 3	SPECIFICATIONS & NOTES
SHEET NO. 4	STANDARD PLATES

**ESTIMATE OF QUANTITIES**

Bid Item Number	Item	Quantity	Unit
009E0010	Mobilization	LS	Lump Sum
740E0020	Crushed Aggregate Type 1B	3000	Ton
	(Isabel Stockpile Site) Stockpile # 3781C		

## **SPECIFICATIONS**

Standard Specifications for Roads and Bridges, 2015 Edition and Required Provisions, Supplemental Specifications and/or Special Provisions as included in the Proposal.

## **CONTRACTOR FURNISHED CRUSHED AGGREGATE TYPE 1B**

Contractor Furnished Crushed Aggregate Type 1B shall conform to the requirements of Section 881.

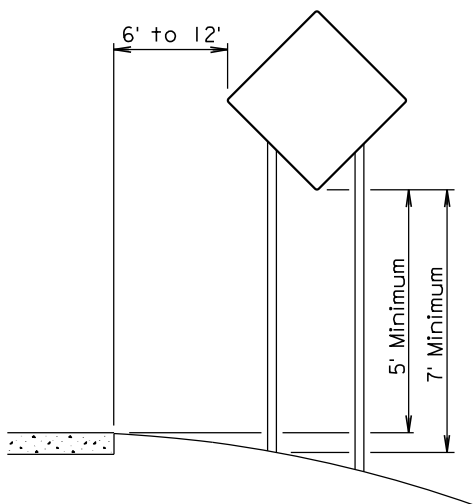
## **MAINTENANCE OF TRAFFIC**

The Contractor shall furnish and install 48" x 48" TRUCK CROSSING signs, W8-6, to be placed on State or County highways or other well-traveled roadways. The signs shall be located a minimum of 550' in advance of intersections and approaches to the highway where the haul route crosses or turns onto/from the highway. The TRUCK CROSSING signs shall be installed for both directions of traffic travel. The exact number and location of the signs will be determined based on the pit location and haul road approved for use.

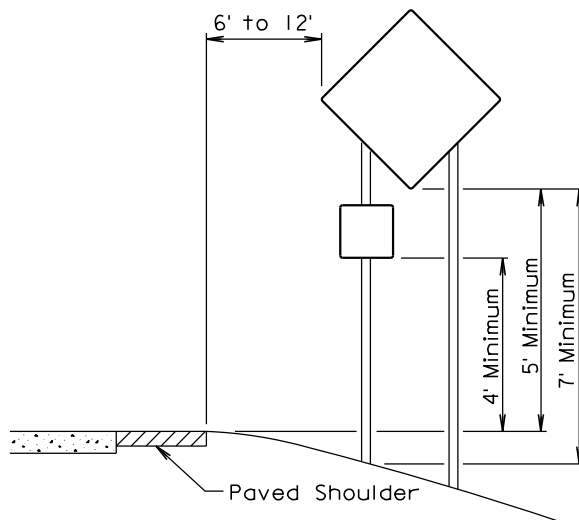
The TRUCK CROSSING signs shall be displayed at all times when the haul vehicles are hauling material from the pit to the stockpile site. During non-working hours, the signs shall be covered or removed from view. Hinged signs may be used. There will be no direct payment for the TRUCK CROSSING signs. All costs for furnishing, installation, maintenance and removal of the signs shall be absorbed in the various contract items.

## **HAUL ROADS**

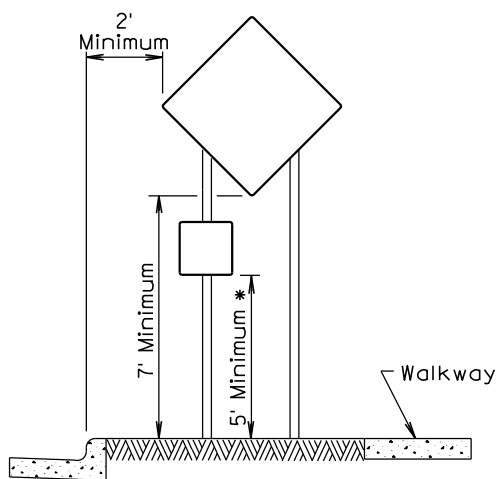
The Contractor shall be responsible for any haul roads used to transport material to the stockpile site. The State will not participate in the cost of restoration of any haul roads used by the Contractor.



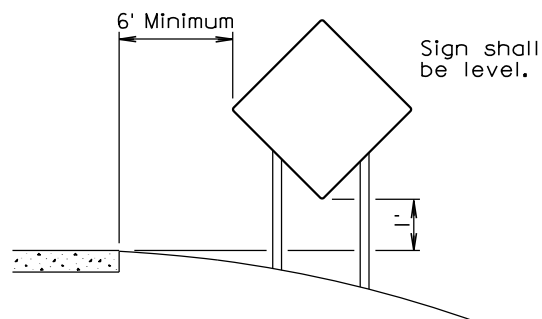
RURAL DISTRICT



RURAL DISTRICT WITH  
SUPPLEMENTAL PLATE



URBAN DISTRICT



RURAL DISTRICT  
3 DAY MAXIMUM

(Not applicable to regulatory signs)

\* If the bottom of supplemental plate is mounted lower than 7 feet above a pedestrian walkway, the supplemental plate should not project more than 4" into the pedestrian facility.

September 22, 2014

Published Date: 1st Qtr. 2018

**S  
D  
D  
O  
T**

**CRASHWORTHY SIGN SUPPORTS**  
(Typical Construction Signing)

PLATE NUMBER  
**634.85**

Sheet 1 of 1