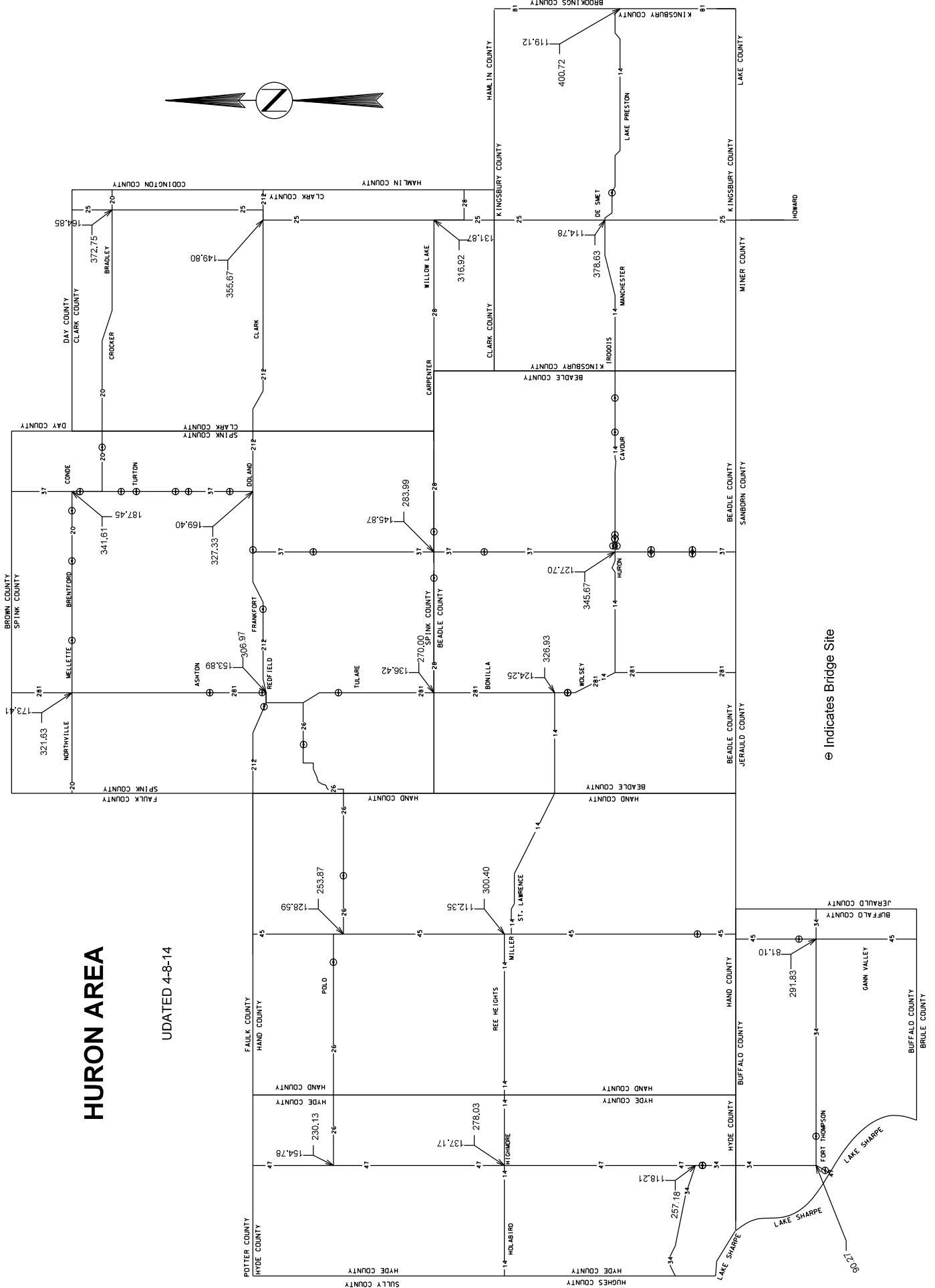


# HURON AREA

UPDATED 4-8-14



⊗ Indicates Bridge Site

# BRIDGE CLEANING

BEADLE, BUFFALO, CLARK, HAND, HYDE, KINGSBURY, AND SPINK COUNTIES

## ENVIRONMENTAL COMMITMENTS

The SDDOT is committed to protecting the environment and uses Section A Environmental Commitments as a communication tool for the Engineer and Contractor to ensure that attention is given to avoid, minimize, and/or mitigate an environmental impact. Environmental commitments to various agencies and the public have been made to secure approval of this project. An agency with permitting authority can delay a project if identified environmental impacts have not been adequately addressed. Unless otherwise designated, the Contractor's primary contact regarding matters associated with these commitments will be the Project Engineer. These environmental commitments are not subject to change without prior written approval from the SDDOT Environmental Office.

Additional guidance on SDDOT's Environmental Commitments can be accessed through the Environmental Procedures Manual found at: <http://www.sddot.com/resources/Manuals/EnvironProcManual.pdf>

For questions regarding change orders in the field that may have an effect on an Environmental Commitment, the Project Engineer will contact the Environmental Office at 605-773-3098 or 605-773-4336 to determine whether an environmental analysis and/or resource agency coordination is necessary.

## COMMITMENT B: FEDERALLY THREATENED, ENDANGERED, AND PROTECTED SPECIES

### COMMITMENT B2: WHOOPING CRANE

The Whooping Crane is a spring and fall migratory bird in South Dakota that is about 5 feet tall and typically stops on wetlands, rivers, and agricultural lands along their migration route. An adult Whooping Crane is white with a red crown and a long, dark, pointed bill. Immature Whooping Cranes are cinnamon brown. While in flight, their long necks are kept straight and their long dark legs trail behind. Adult Whooping Cranes' black wing tips are visible during flight.

#### Action Taken/Required:

Harassment or other measures to cause the Whooping Crane to leave the site is a violation of the Endangered Species Act. If a Whooping Crane is sighted roosting in the vicinity of the project, borrow pits, or staging areas associated with the project, cease construction activities in the affected area until the Whooping Crane departs and immediately contact the Project Engineer. The Project Engineer will contact the Environmental Office so that the sighting can be reported to USFWS.

### COMMITMENT B4: BALD EAGLE

Bald eagles are known to occur in this area.

#### Action Taken/Required:

If a nest is observed within one mile of the project site, notify the Project Engineer immediately so that he/she can consult with the Environmental Office for an appropriate course of action.

## COMMITMENT C: WATER SOURCE

The Contractor will not withdraw water with equipment previously used outside the State of South Dakota or previously used in aquatic invasive species waters within South Dakota without prior approval from the SDDOT Environmental Office. Thoroughly wash all construction equipment to prevent and control the introduction and spread of invasive species into the project vicinity.

## **BRIDGE CLEANING**

### **BEADLE, BUFFALO, CLARK, HAND, HYDE, KINGSBURY, AND SPINK COUNTIES**

The Contractor will not withdraw water directly from streams of the James, Big Sioux, and Vermillion watersheds without prior approval from the SDDOT Environmental Office.

#### **Action Taken/Required:**

The Contractor will obtain the necessary permits from the regulatory agencies such as the South Dakota Department of Environment and Natural Resources (DENR) and the United States Army Corps of Engineers (USACE) prior to water extraction activities.

Additional information and mapping of Aquatic Invasive Species in South Dakota can be accessed at: <http://sdleastwanted.com/maps/default.aspx>.

#### **COMMITMENT H: WASTE DISPOSAL SITE**

The Contractor shall furnish a site(s) for the disposal of construction and/or demolition debris generated by this project.

#### **Action Taken/Required:**

The waste disposal site(s) will be managed and reclaimed in accordance with the following from the General Permit for Construction/Demolition Debris Disposal Under the South Dakota Waste Management Program issued by the Department of Environment and Natural Resources.

The waste disposal site(s) will not be located in a wetland, within 200 feet of surface water, or in an area that adversely affects wildlife, recreation, aesthetic value of an area, or any threatened or endangered species, as approved by the Environmental Office and the Project Engineer.

If the waste disposal site(s) is located such that it is within view of any ROW, the following additional requirements will apply:

1. Construction and/or demolition debris consisting of concrete, asphalt concrete, or other similar materials will be buried in a trench completely separate from wood debris. The final cover over the construction and/or demolition debris will consist of a minimum of 1 foot of soil capable of supporting vegetation. Waste disposal sites provided outside of the Public ROW will be seeded in accordance with Natural Resources Conservation Service recommendations. The seeding recommendations may be obtained through the appropriate County NRCS Office. The Contractor will control the access to waste disposal sites not within the Public ROW with fences, gates, and placement of a sign or signs at the entrance to the site stating "No Dumping Allowed".
2. Concrete and asphalt concrete debris may be stockpiled within view of the ROW for a period of time not to exceed the duration of the project. Prior to project completion, the waste shall be removed from view of the ROW or buried and the waste disposal site reclaimed as noted above.

The above requirements will not apply to waste disposal sites that are covered by an individual solid waste permit as specified in SDCL 34A-6-58, SDCL 34A-6-1.13, and ARSD 74:27:10:06.

Failure to comply with the requirements stated above may result in civil penalties in accordance with South Dakota Solid Waste Law, SDCL 34A-6-1.31.

All costs associated with furnishing waste disposal site(s), disposing of waste, maintaining control of access (fence, gates, and signs), and reclamation of the waste disposal site(s) will be incidental to the various contract items.

## **BRIDGE CLEANING**

**BEADLE, BUFFALO, CLARK, HAND, HYDE, KINGSBURY, AND SPINK COUNTIES**

### **COMMITMENT I: HISTORICAL PRESERVATION OFFICE CLEARANCES**

State Historical Preservation Office (SHPO or THPO) concurrence has not been obtained for this project.

#### **Action Taken/Required:**

All earth disturbing activities require a cultural resource review prior to scheduling the pre-construction meeting. This work includes, but is not limited to: Contractor furnished material sources, material processing sites, stockpile sites, storage areas, plant sites, and waste areas.

The Contractor will arrange and pay for a record search and when necessary, a cultural resource survey. The Contractor has the option to contact the state Archaeological Research Center (ARC) at 605-394-1936 or another qualified archaeologist, to obtain either a records search or a cultural resources survey. A record search might be sufficient for review if the site was previously surveyed; however, a cultural resources survey may need to be conducted by a qualified archaeologist.

The Contractor will provide ARC with the following: a topographical map or aerial view of which the site is clearly outlined, site dimensions, project number, and PCN. If applicable, provide evidence that the site has been previously disturbed by farming, mining, or construction activities with a landowner statement that artifacts have not been found on the site.

The Contractor will submit the cultural resources survey report to SDDOT Environmental Office, 700 East Broadway Avenue, Pierre, SD 57501-2586. SDDOT will submit the information to the appropriate SHPO/THPO. Allow **30 Days** from the date this information is submitted to the Environmental Engineer for SHPO/THPO review.

In the event of an inadvertent discovery of human remains, funerary objects, or if evidence of cultural resources is identified during project construction activities, then such activities will immediately cease and the Project Engineer will be immediately notified. The Project Engineer will contact the SDDOT Environmental Office to determine an appropriate course of action.

The Contractor is responsible for obtaining any additional permits and clearances for Contractor furnished material sources, material processing sites, stockpile sites, storage areas, plant sites, and waste areas that affect wetlands, threatened and endangered species, or waterways. The Contractor will not utilize a site known or suspected of having contaminated soil or water. The Contractor will provide the required permits and clearances to the Project Engineer at the preconstruction meeting.

# **BRIDGE CLEANING**

**BEADLE, BUFFALO, CLARK, HAND, HYDE, KINGSBURY, AND SPINK COUNTIES**

## **SPECIFICATIONS**

Standard Specifications for Roads and Bridges, 2015 Edition and Required Provisions, Supplemental Specifications, and Special Provisions as included in the Proposal.

## **SCOPE OF WORK**

Contractor shall furnish all necessary vehicles, equipment, supervision, labor, materials, tools, water, debris disposal and incidentals necessary to complete the work to the satisfaction of the Engineer. Work to be done consists of cleaning/sweeping bridge decks, adjacent approach slabs, and transverse joints located within the bridge deck and approach slabs. The cleaning/sweeping operation shall consist of removing all dirt, mud, silt, sand, paper, rocks, cans, glass, dead animal carcasses, tire retreads, vehicle parts and other debris. Unforeseen conditions, such as weather, can bring unusual amounts of debris to bridge sites. Removal of all debris regardless of scope and magnitude is the responsibility of Contractor.

Contractor shall be required to provide specialized heavy equipment such as sweepers, haul trucks and air compressors to remove debris, sand, mud and silt from bridge sites as indicated in Contract.

For each bridge site the Contractor shall perform a cleaning/sweeping twice during the terms of this contract. The first cleaning/sweeping shall be conducted during the months of April and May. The second cleaning/sweeping shall be conducted during the months of September and October.

## **GENERAL REQUIRMENTS**

Contractor shall evaluate actual bridge site characteristics before submitting a bid. It is the intent of this Contract to provide for cleaning and sweeping of all bridge decks, adjacent approach slabs, and transverse joints located within the bridge deck and approach slabs within the areas described herein.

The TABLE OF BRIDGES (Attachment 1) contained within these plans provides the list of bridge sites that require cleaning/sweeping. This table also provides information on bridge length, width and size of approach slabs. Not all bridges contain approach slabs. The cover map(s) provide a general idea of bridge site locations.

Contractor shall comply with all Federal, State, County and local regulations, including disposal of debris collected.

All work shall be accomplished during daylight hours.

Equipment and vehicles shall not be stored in the highway Right-of-Way.

Approach Slabs as defined for this contract are reinforced concrete slabs located at each end of the bridge deck. Approach slabs typically have curbs located along the edges of the slab. The length of approach slabs varies in length and in some cases, consist of 2 slabs. The end of an approach slab is typically defined by a wide joint of over 6 inches or 2 joints located with 2 feet between the joints.

## **CLEANING SCHEDULE**

The Contractor shall provide the Engineer a cleaning schedule for the current week, no later than 10AM Monday. The Contactor shall provide the Engineer a phone number to be able to contact the onsite Forman of the crew during working hours.

# **BRIDGE CLEANING**

## **BEADLE, BUFFALO, CLARK, HAND, HYDE, KINGSBURY, AND SPINK COUNTIES**

### **TRAFFIC CONTROL**

For a 2 lane roadway with traffic in opposing directions, traffic control shall be as per Standard Plate 634.23. As an alternate, the Contractor may use the traffic control plan MOBILE SWEEPING OPERATIONS ON A 2 LANE ROADWAY contained within this document.

For a 4 lane divided roadway, traffic control shall be as per Standard Plate 634.64. As an alternate, the Contractor may use the traffic control plan MOBILE SWEEPING OPERATIONS ON DIVIDED 4-LANE ROADWAY contained within this document.

For a 4 lane undivided roadway, traffic control shall be as per Standard Plate 634.47. On those roadways where there is a center raised median that requires sweeping, traffic control shall be as per Standard Plate 634.48. As an alternate, the Contractor may use the traffic control plan MOBILE SWEEPING OPERATIONS ON DIVIDED 4-LANE ROADWAY contained within this document.

Vehicles and equipment working in traffic or alongside traffic shall be equipped with a flashing amber light visible from all directions at a minimum distance of 1/2 mile. The amber light shall be mounted on the uppermost part of the Contractor's vehicle. Lights must flash at  $75 \pm 15$  flashes per minute. The sweeper shall have lights, meeting the aforementioned requirements, at the front and back of the equipment. Vehicle flasher/hazard lights are not acceptable.

### **SWEEPING REQUIREMENTS**

Sweeping areas will include all curb lines along both sides of the bridge deck and approach slabs, or to the edge of the pavement or guardrail where no curbs exist, along all curbs on raised medians, and over all portions of painted medians. Contractor is responsible for sweeping from the marked white or yellow edge line to the edge of bridge deck or approach slab regardless of the width. If there are no marked white or yellow edge lines, a minimum width of 5 feet shall be swept along the edges of the bridge deck or approach slab.

All refuse materials and debris shall be collected.

Effort beyond a mechanical sweeper may be required to loosen harden and packed material on the surface and along the curb face.

Sweeping will be accomplished in the same direction as traffic flow at all times.

Contractor will make every reasonable effort to minimize streaks left by sweepers.

At least 2 passes of the sweeper shall be made over areas that require sweeping. The total number of passes required will vary based upon the width of sweeping required and the width of the sweeper used.

Sweeping operations shall extend at least 50 feet beyond both ends of the approach slab, or end of bridge deck if no approach slab is present. There should be no ridge or pile of material left on the roadway or shoulder surface at the end of the sweeping operations. This may require hand work under the guardrail.

### **JOINT CLEANING REQUIREMENTS**

Transverse joint openings located on the bridge deck and approach slabs shall be cleaned of debris with compressed air, or other methods approached by the Engineer. Joint cleaning shall be accomplished at the same time as sweeping of the bridge deck and approach slabs. Debris shall not be blown over the edge of the deck onto the underlying roadway or waterway channel. The entire length of the joint shall be cleaned.

# BRIDGE CLEANING

BEADLE, BUFFALO, CLARK, HAND, HYDE, KINGSBURY, AND SPINK COUNTIES

## BRIDGE CLEANING EXCEPTIONS

The bridge on SD37 over the James River and the bridge on SD26 east of Polo do not require cleaning as those bridges are scheduled for replacement.

## BRIDGE CLEANING CONFLICTS

There are bridges that are scheduled for construction during the calendar year. This construction may conflict with the completion of 2 bridge cleaning. These potential conflicts are noted in The TABLE OF BRIDGES (Attachment 1) in the far-right column. It is anticipated that one cleaning can be accomplished on these bridges. Quantities for the project are based upon these conflict bridges being cleaned one time. The Contractor shall work with the Engineer to determine what locations have conflicts at the time cleaning is planned.

## DISPOSAL

All refuse materials and debris collected shall become the property of the Contractor and shall be properly disposed of.

NO "on road" storage or dumping shall be permitted.

## EQUIPMENT

All equipment shall be adequately maintained both mechanically and visually, and will be fully operational during all sweeping operations.

All equipment shall be properly registered and insured according to motor vehicles laws of the state of South Dakota.

All units shall be clearly and prominently marked with Contractor's company name.

- AIR COMPRESSOR

Compressor shall have a rated pressure of 100 psi with a minimum pressure level of 80 psi. Compressor shall be capable of delivering a minimum of 180 CFM.

- SWEeper

Minimum width of main broom or pickup head shall be 54 inches. Sweeper shall utilize both left side and right side brooms for picking up debris. Sweeper shall have an internal self-contained storage hopper. Storage hopper shall be a minimum capacity of 4 Cubic Yards.

- SWEeper BRUSH/BROOM REPLACEMENT

Worn brushes and brooms shall be replaced and adjusted to insure maximum efficiency.

- a. Six (6) inches on the gutter brushes;
- b. As required on trash direction brush;
- c. Six (6) inches on the main broom.

These shall be minimum criteria and final determination shall be on the effectiveness of all brushes and brooms.

## **BRIDGE CLEANING**

### **BEADLE, BUFFALO, CLARK, HAND, HYDE, KINGSBURY, AND SPINK COUNTIES**

- ATTENUATOR

Truck mounted or trailer attenuators may be utilized, provided attenuators conform to and are maintained in accordance with the requirements of Section 634.2 and Part 6 of the MUTCD for Category III traffic control devices.

### **DUST CONTROL**

Contractor shall use all reasonable methods to minimize dust emissions during the performance of this Contract. Contractor will not create dust in such a quantity to create a nuisance, danger, or impair visibility.

Spraying of water during sweeping operations may be required to control dust.

### **PERFORMANCE**

Primary objectives of the cleaning/sweeping program are:

- Remove debris buildup to reduce infiltration of roadway deicers into concrete.
- Prevent debris from enter storm drains and bridge deck drains.
- Prevent debris from entering waterways.
- Maintain gutter flow lines free of debris for free flow of water.
- Maintain a state of cleanliness for safety and acceptable to travelers.

Sweeping shall normally consist of a pass (or passes) over an area. Contractor will make as many passes or such extra effort as may be required to adequately clean the bridge deck and approach slabs. Obstructions such as accumulations of silt, compacted dirt, leaves and similar debris shall be removed. Items such as small tree limbs, dead animal carcasses, tire retreads, vehicle parts and rocks may require removal prior to sweeping with a mechanical sweeper.

Inspections shall be performed on a regular basis, as well as spot checks and response to complaints.

Engineer shall decide adequacy of cleaning/sweeping.

In the event that the results of a cleaning/sweeping are considered to be unsatisfactory, Contractor shall re-clean/sweep unsatisfactory area(s) at Contractor's expense within 10 days after notification.

SDDOT reserves the right to withhold payment for missed, incomplete or unsatisfactory sweeping performance.

### **DEFICIENT PERFORMANCE**

Liquidated Damages shall be applied to deficient performance and/or late completion.

Repeated instances of failure to perform shall result in cancellation of the Contract.



## **BRIDGE CLEANING**

**BEADLE, BUFFALO, CLARK, HAND, HYDE, KINGSBURY, AND SPINK COUNTIES**

### **RECORD KEEPING**

Contractor shall complete RECORD OF BRIDGE CLEANING (Attachment 2) contained within the contract. Contractor shall document arrival time at each bridge site, start and finish time of sweeping operations, number of passes made with sweeper, and departure time from each bridge site. Payment for services will not be made until document is completed and submitted to Engineer. Recording keeping shall be kept up to date at all times and records shall be made available to Engineer at any time.

The Contractor may submit to the Area Engineer, other methods of documenting cleaning progress. The Contractor shall submit alternate documenting methods a minimum of 1 week prior to the preconstruction meeting.

### **BASIS OF MEASUREMENT AND PAYMENT**

All costs for equipment, materials, labor and incidentals to clean/sweep shall be incidental to the contract unit price per site for MISCELLANEOUS WORK. A cleaning/sweeping during the months of April and/or May shall constitute 1 site payment and the second cleaning/sweeping in September and/or October shall constitute 1 site payment. The cost for disposal of all refuse materials and debris, including dump fees, shall be included in the contract unit price per site for MISCELLANEOUS WORK.

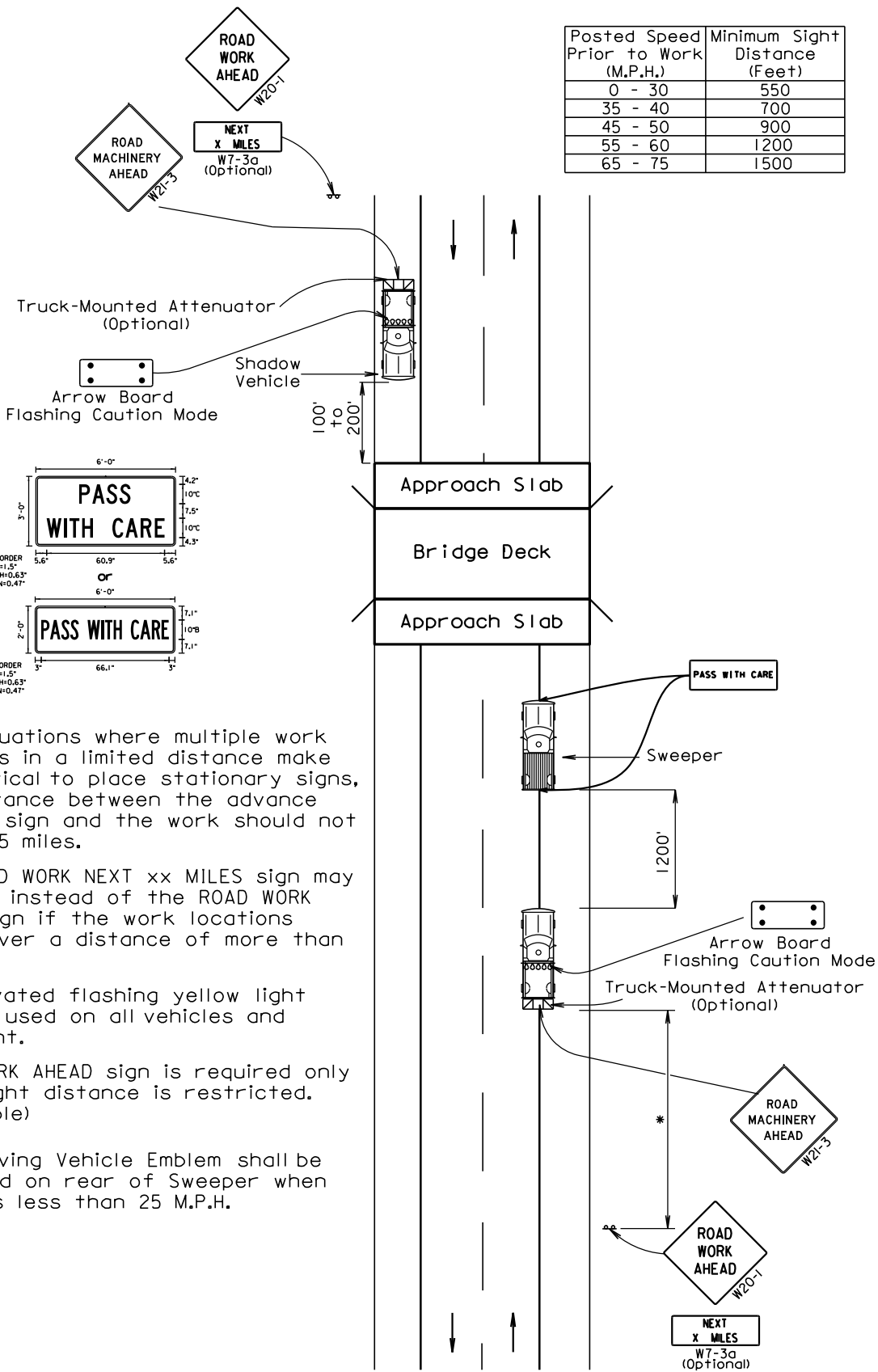
All costs for shadow vehicles, traffic control signs, arrow boards, flaggers, impact attenuators and other safety devices shall be incidental to the contract lump sum price for TRAFFIC CONTROL, MISCELLANEOUS.

# BRIDGE CLEANING

BEADLE, BUFFALO, CLARK, HAND, HYDE, KINGSBURY, AND SPINK COUNTIES

## MOBILE SWEEPING OPERATIONS ON A 2-LANE ROADWAY

Posted Speed Prior to Work (M.P.H.)	Minimum Sight Distance (Feet)
0 - 30	550
35 - 40	700
45 - 50	900
55 - 60	1200
65 - 75	1500



\* In situations where multiple work locations in a limited distance make it practical to place stationary signs, the distance between the advance warning sign and the work should not exceed 5 miles.

The ROAD WORK NEXT xx MILES sign may be used instead of the ROAD WORK AHEAD sign if the work locations occur over a distance of more than 2 miles.

An activated flashing yellow light shall be used on all vehicles and equipment.

ROAD WORK AHEAD sign is required only when sight distance is restricted. (See Table)

Slow Moving Vehicle Emblem shall be displayed on rear of Sweeper when speed is less than 25 M.P.H.

# BRIDGE CLEANING

BEADLE, BUFFALO, CLARK, HAND, HYDE, KINGSBURY, AND SPINK COUNTIES

## MOBILE SWEEPING OPERATIONS ON A DIVIDED 4-LANE ROADWAY

\* In situations where multiple work locations in a limited distance make it practical to place stationary signs, the distance between the advance warning sign and the work should not exceed 5 miles.

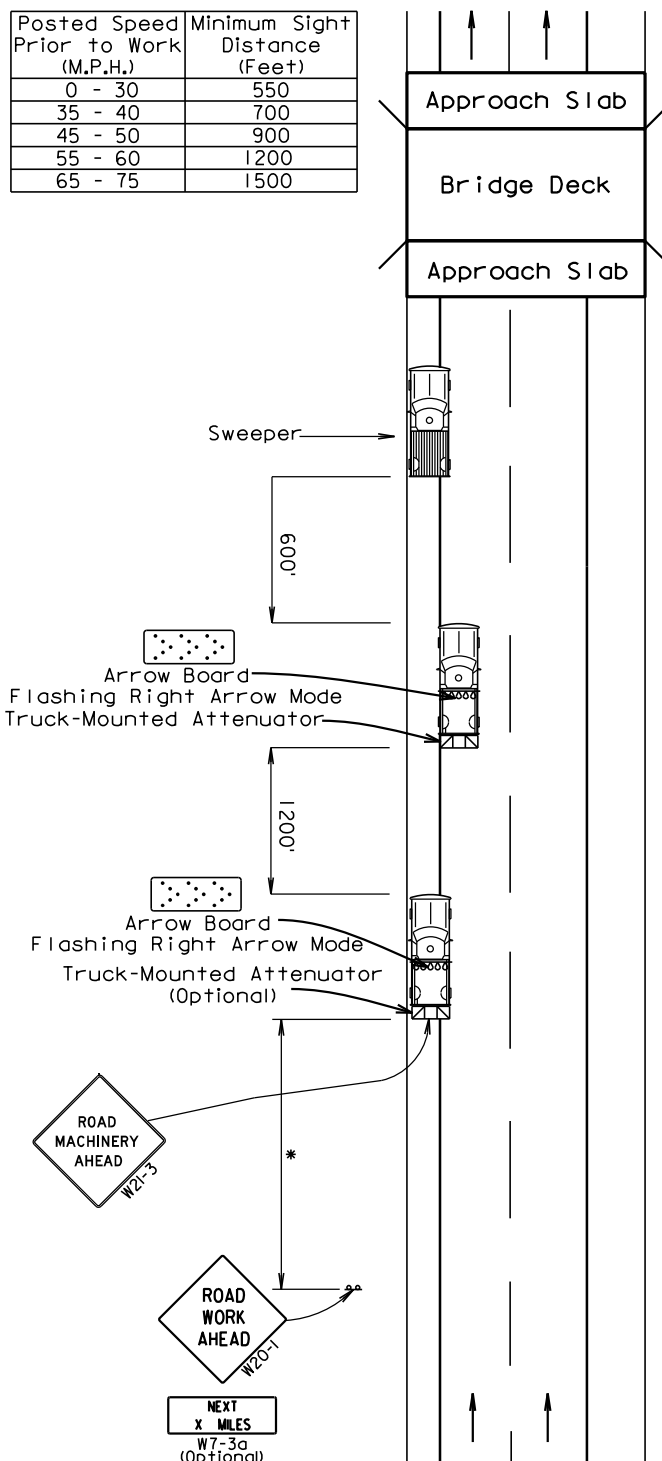
The ROAD WORK NEXT xx MILES sign may be used instead of the ROAD WORK AHEAD sign if the work locations occur over a distance of more than 2 miles.

An activated flashing yellow light shall be used on all vehicles and equipment.

ROAD WORK AHEAD sign is required only when sight distance is restricted. (See Table)

Slow Moving Vehicle Emblem shall be displayed on rear of Sweeper when speed is less than 25 M.P.H.

Posted Speed Prior to Work (M.P.H.)	Minimum Sight Distance (Feet)
0 - 30	550
35 - 40	700
45 - 50	900
55 - 60	1200
65 - 75	1500



# BRIDGE CLEANING

BEADLE, BUFFALO, CLARK, HAND, HYDE, KINGSBURY, AND SPINK COUNTIES

## MOBILE SWEEPING OPERATIONS ON A DIVIDED 4-LANE ROADWAY

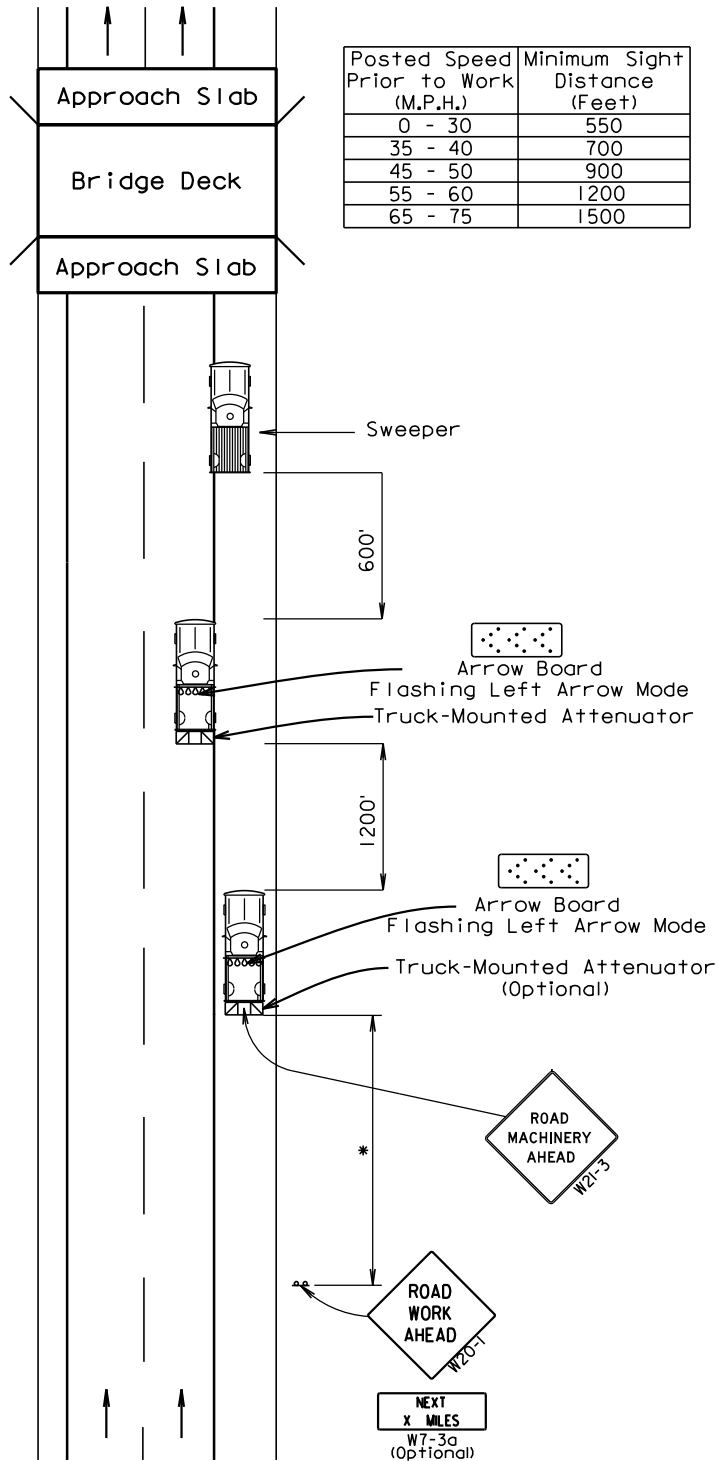
\* In situations where multiple work locations in a limited distance make it practical to place stationary signs, the distance between the advance warning sign and the work should not exceed 5 miles.

The ROAD WORK NEXT xx MILES sign may be used instead of the ROAD WORK AHEAD sign if the work locations occur over a distance of more than 2 miles.

An activated flashing yellow light shall be used on all vehicles and equipment.

ROAD WORK AHEAD sign is required only when sight distance is restricted. (See Table)



Slow Moving Vehicle Emblem shall be displayed on rear of Sweeper when speed is less than 25 M.P.H.



# BRIDGE CLEANING

**BEADLE, BUFFALO, CLARK, HAND, HYDE, KINGSBURY, AND SPINK COUNTIES**

Posted Speed Prior to Work (M.P.H.)	Spacing of Advance Warning Signs (Feet) (A)	Spacing of Channelizing Devices (Feet) (G)
0 - 30	200	25
35 - 40	350	25
45	500	25
50	500	50
55	750	50
60 - 65	1000	50

-  Flagger
-  Channelizing Device

For low-volume traffic situations with short work zones on straight roadways where the flagger is visible to road users approaching from both directions, a single flagger may be used.

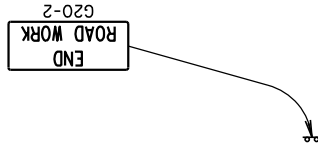
The ROAD WORK AHEAD and the END ROAD WORK signs may be omitted for short duration operations (1 hour or less).

For tack and/or flush seal operations, when flaggers are not being used, the FRESH OIL sign (W21-2) shall be displayed in advance of the liquid asphalt areas.

Flashing warning lights and/or flags may be used to call attention to the advance warning signs.

The channelizing devices shall be drums or 42" cones.

Channelizing devices are not required along the centerline adjacent to work area when pilot cars are utilized for escorting traffic through the work area.

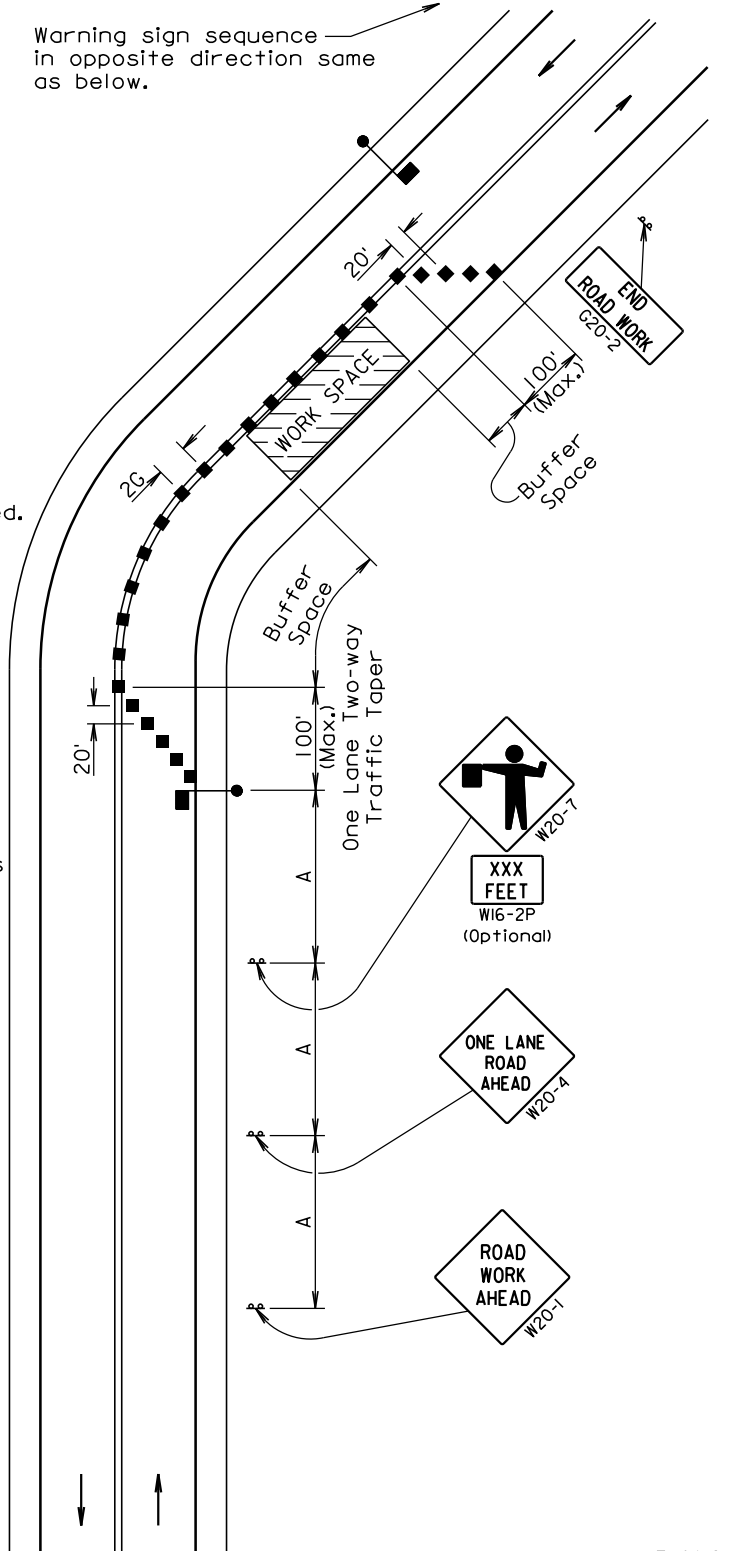


Channelizing devices and flaggers shall be used at intersecting roads to control intersecting road traffic as required.

The buffer space should be extended so that the two-way traffic taper is placed before a horizontal or vertical curve to provide adequate sight distance for the flagger and queue of stopped vehicles.

The length of A may be adjusted to fit field conditions.

Warning sign sequence in opposite direction same as below.



June 3, 2016

*Published Date: 1st Qtr. 2019*

**S  
D  
D  
O  
T**

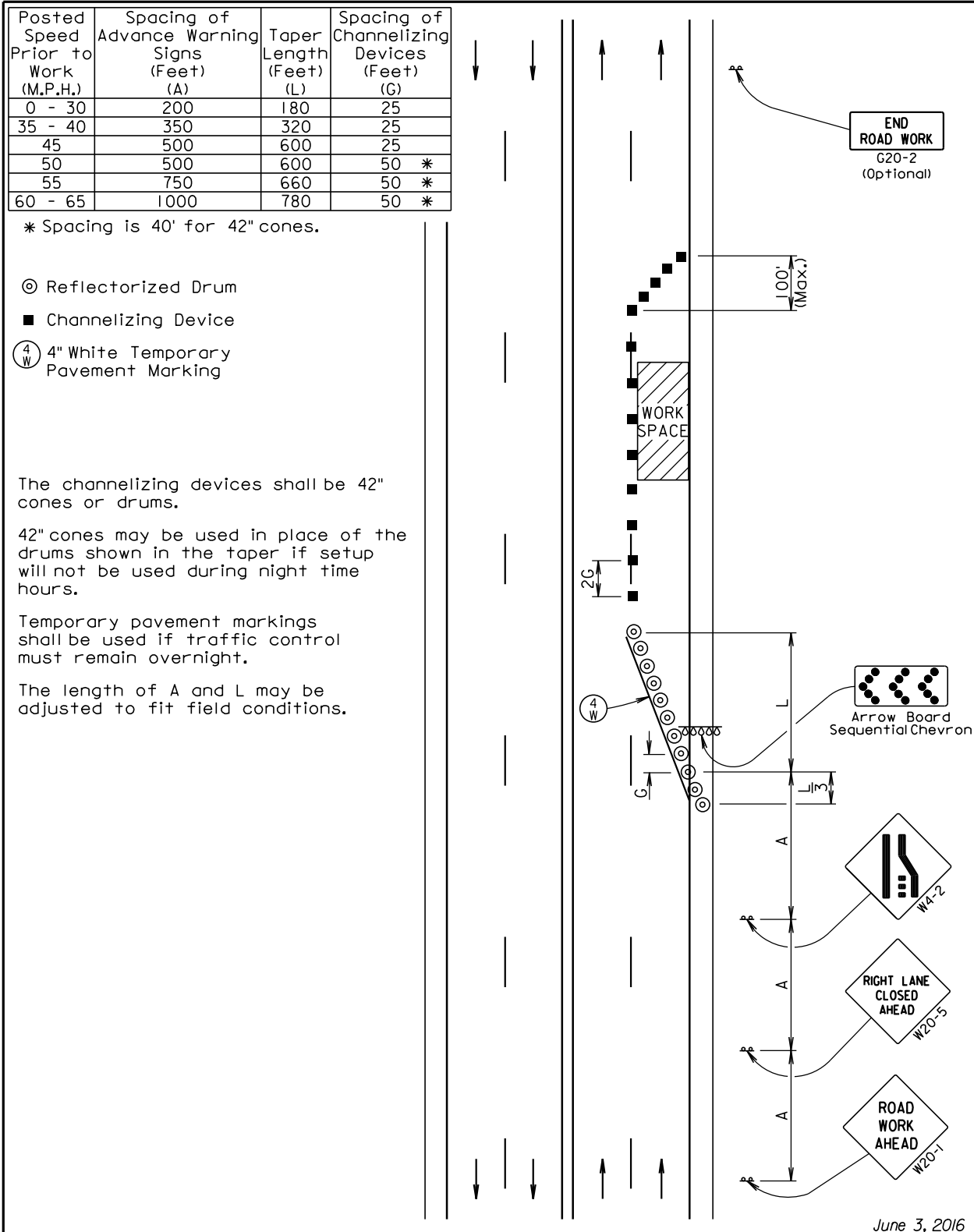
**GUIDES FOR TRAFFIC CONTROL DEVICES  
LANE CLOSURE WITH FLAGGER PROVIDED**

PLATE NUMBER  
**634.23**

Sheet 1 of 1

# BRIDGE CLEANING

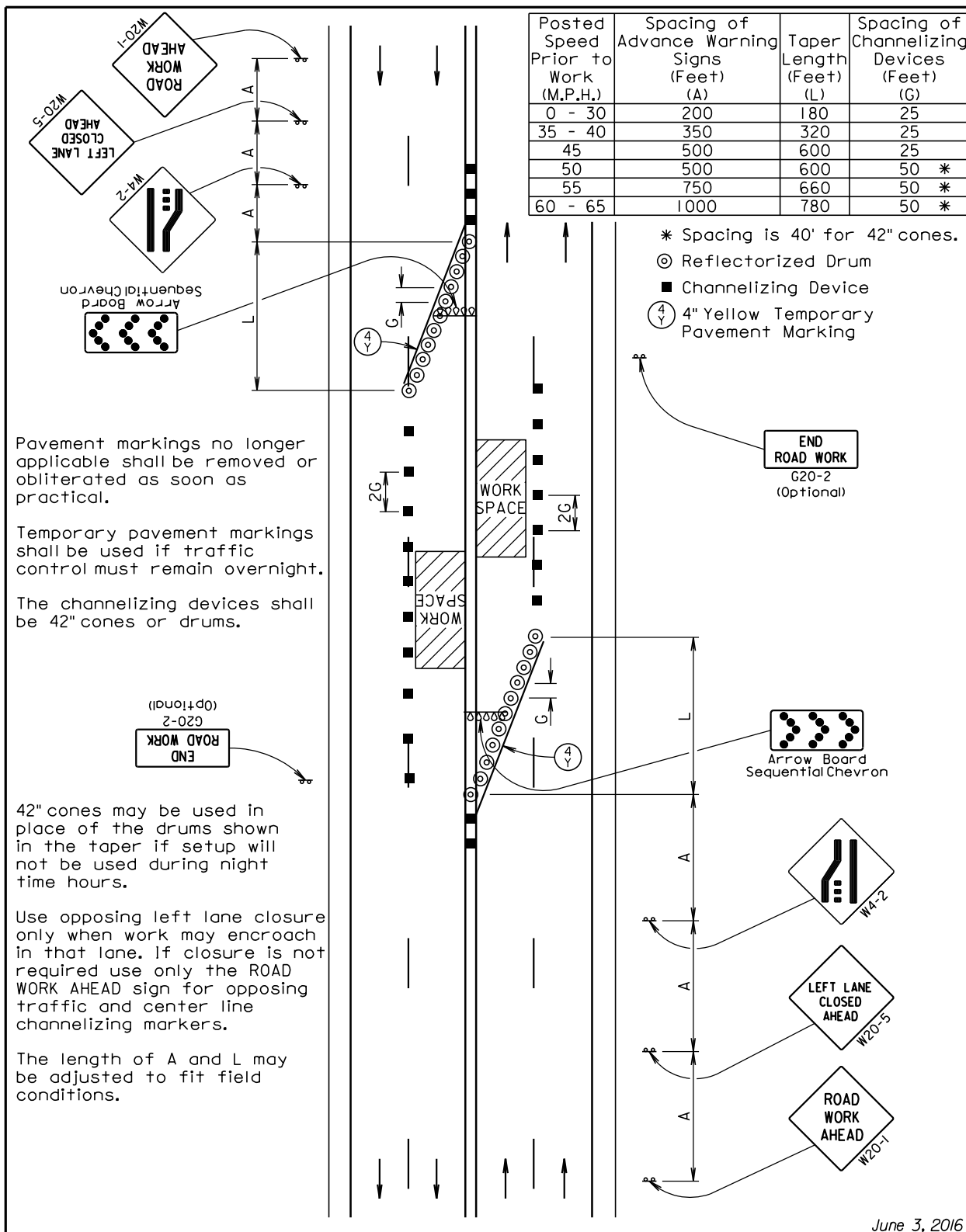
**BEADLE, BUFFALO, CLARK, HAND, HYDE, KINGSBURY, AND SPINK COUNTIES**



<p><i>Published Date: 1st Qtr. 2019</i></p>	S D D O T	<p><b>GUIDES FOR TRAFFIC CONTROL DEVICES</b>  <b>4-LANE UNDIVIDED, RIGHT LANE CLOSED</b></p>	<p>PLATE NUMBER  <b>634.47</b></p>
		<p>Sheet 1 of 1</p>	

# BRIDGE CLEANING

BEADLE, BUFFALO, CLARK, HAND, HYDE, KINGSBURY, AND SPINK COUNTIES



Pavement markings no longer applicable shall be removed or obliterated as soon as practical.

Temporary pavement markings shall be used if traffic control must remain overnight.

The channelizing devices shall be 42" cones or drums.

42" cones may be used in place of the drums shown in the taper if setup will not be used during night time hours.

Use opposing left lane closure only when work may encroach in that lane. If closure is not required use only the ROAD WORK AHEAD sign for opposing traffic and center line channelizing markers.

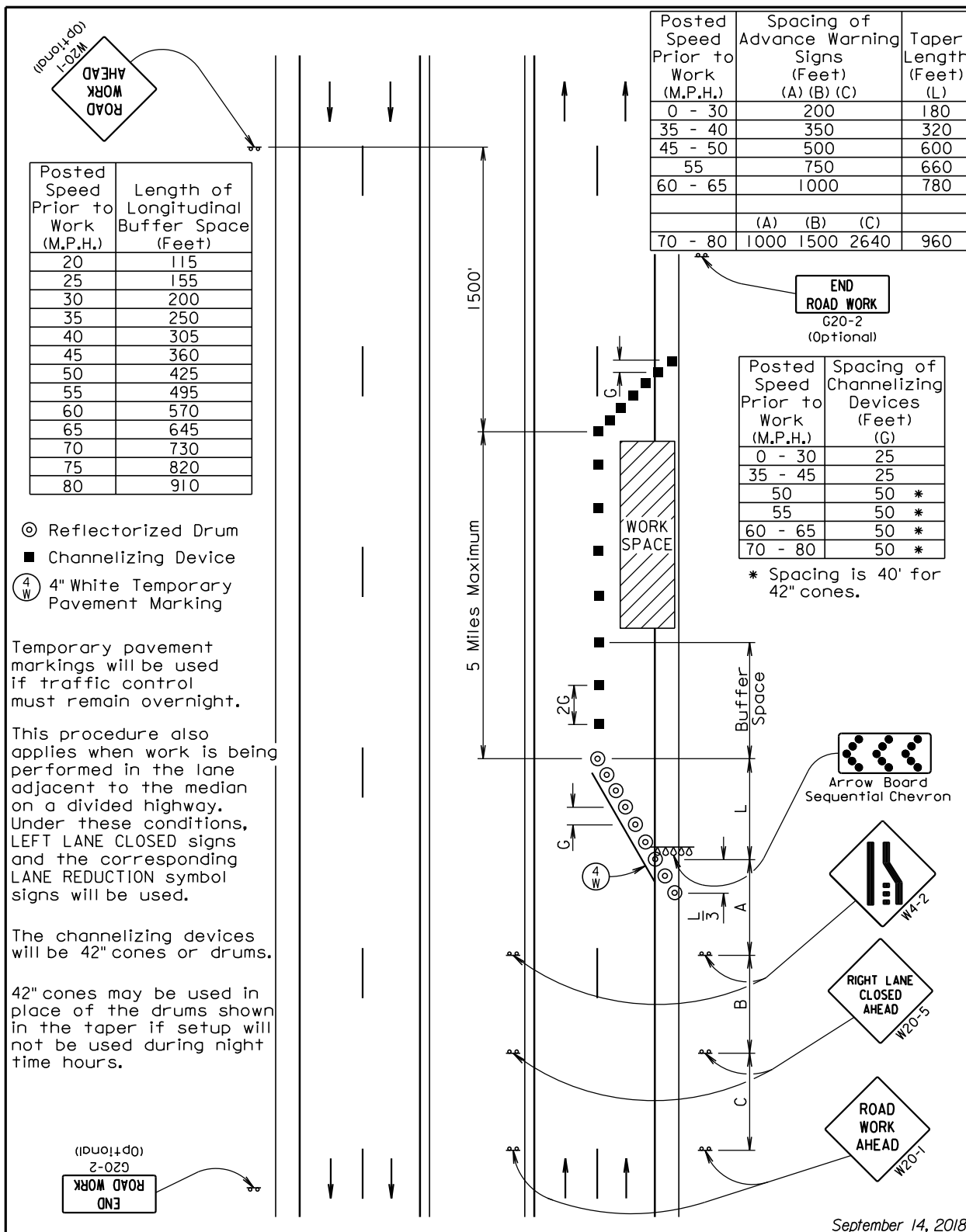
The length of A and L may be adjusted to fit field conditions.

June 3, 2016

<p><i>Published Date: 1st Qtr. 2019</i></p>	<p><b>S D D O T</b></p>	<p><b>GUIDES FOR TRAFFIC CONTROL DEVICES</b>  <b>4-LANE UNDIVIDED, LEFT LANE CLOSED</b></p>	<p style="text-align: center;">PLATE NUMBER  <b>634.48</b></p> <hr style="border: 0; border-top: 1px solid black; margin: 5px 0;"/> <p style="text-align: center; font-size: small;">Sheet 1 of 1</p>
---	---	---	---

# BRIDGE CLEANING

BEADLE, BUFFALO, CLARK, HAND, HYDE, KINGSBURY, AND SPINK COUNTIES



© Reflectorized Drum  
 ■ Channelizing Device  
 (4 W) 4" White Temporary Pavement Marking

Temporary pavement markings will be used if traffic control must remain overnight.

This procedure also applies when work is being performed in the lane adjacent to the median on a divided highway. Under these conditions, LEFT LANE CLOSED signs and the corresponding LANE REDUCTION symbol signs will be used.

The channelizing devices will be 42" cones or drums.

42" cones may be used in place of the drums shown in the taper if setup will not be used during night time hours.

September 14, 2018



# TABLE OF BRIDGES

Attachment 1

## BRIDGE CLEANING

BEADLE, BUFFALO, CLARK, HAND, HYDE, KINGSBURY, AND SPINK COUNTIES

Route	MRIM	Structure Number	Location	Structure Length (Ft)	Bridge Roadway Width (Ft)	Deck Area (SF)	Skew Angle	Approach Quantity (SF)	Approach Joint Quantity (LF)	Deck Joint Quantity (LF)
SD 20	326.87	58-152-060	5.2 E of Jct SD 20 & US 281	241	36	8676	0	1514	76	
SD 20	334.72	58-231-060	6.8 W Jct SD 20 W & Jct SD 37 N	105.5	30	3165	0			
SD 20	339.67	58-281-060	1.8 W of Jct SD 20 W & SD 37 N	117	30	3510	0			
SD 20	342.39	58-300-068	0.8 S of Jct SD 20 W & SD 37 N	86.5	30	2595	0			
SD 20	349.02	58-344-090	1.6 W of Clark County Line	83	30	2490	0			
SD 26	259.79	30-218-090	5.9 E of Jct SD 26 E & SD 45 S	73.5	30	2205	0			
SD 26	275.37	58-047-290	4.3 W of Jct SD 26 & US 281	137	32	4384	0			
SD 28	281.5	58-214-420	2.6 W of Jct SD 28 & SD 37	352.48	32	11279.4	25	1526	68	
SD 28	285.99	58-260-420	2.0 E of Jct SD 28 & SD 37	135	32	4320	0	1387	68	
SD 34	258	35-110-447	0.9 S of Jct SD 34 W & SD 47 N	106	30	3180	0			
SD 34	272.07	09-094-080	2.8 W of Jct SD34 & SD 50 S	106.07	36	3818.52	15	1538	76	
SD 37	157.93	58-240-300	6.0 S of Jct US 212 W & SD 37 S	128	30	3840	0			
SD 37	171.77	58-300-217	2.3 N of Jct US 212 E & SD 37 N	92	30	2760	0			
SD 37	175.86	58-300-176	6.4 N of Jct US 212 E & SD 37 N	67	30	2010	0			
SD 37	177.29	58-300-163	7.7 N of Jct US 212 E & SD 37 N	140	30	4200	0			
SD 37	181.02	58-300-124	3.4 S of Jct SD 20 E & SD 37 S	105.5	30	3165	0			
SD 37	182.66	58-300-109	1.8 S of Jct SD 20 E & SD 37 S	105.5	30	3165	0			
SD 37 N	120.06	03-240-257	5.7 S of Huron	171.31	38	6509.78	30	2213	80	
SD 37 N	124.22	03-240-216	3.5 S of Jct US 14 & SD 37	171.31	38	6509.78	30	2213	80	
SD 37 S	120.06	03-239-257	5.7 S of Huron	171.31	38	6509.78	30	2213	80	
SD 37 S	124.22	03-239-216	3.5 S of Jct US 14 & SD 37	171.31	38	6509.78	30	2213	80	
SD 45	82.77	09-290-063	1.8 N of Jct SD 34 & SD 45	54	30	1620	0			
SD 45	93.02	30-160-442	3.9 N of Buffalo County Line	97.5	29.83	2908.43	0			

# TABLE OF BRIDGES

Attachment 1

## BRIDGE CLEANING

BEADLE, BUFFALO, CLARK, HAND, HYDE, KINGSBURY, AND SPINK COUNTIES

Route	MRIM	Structure Number	Location	Structure Length (Ft)	Bridge Roadway Width (Ft)	Deck Area (SF)	Skew Angle	Approach Quantity (SF)	Approach Joint Quantity (LF)	Deck Joint Quantity (LF)	Count
SD 47	89.7	09-060-089	0.3 NE of Big Bend Dam	227.5	30	6825	0			30	
US 14	327.69	03-100-133	2.0 NW of Wolsey	128.21	44	5641.24	25	3161	92		
US 14	346.97	03-253-180	1.3 E of Jct US 14 & SD 37	326.5	60	19590	45			182	*
US 14	347.06	03-254-180	1.4 E of Jct US 14 & SD 37	254	24	6096	0	1139	56		*
US 14	357.51	03-359-180	2.8 E of Cavour	93.31	44	4105.64	30	2645	92		*
US 14	360.8	03-393-180	2.7 W of Iroquois	99.5	44	4378	0	1879	92		*
US 14	381.69	39-177-117	3.1 E of Jct US 14 & SD 25	96.38	44	4240.72	20	1768			
US 14 E	346.22	03-246-181	0.5 E of Jct US 14 & SD 37	106	30	3180	0	1305	64		*
US 14 W	346.22	03-246-180	0.5 E of Jct US 14 & SD 37	106	30	3180	0	1385	64		*
US 212	306.15	58-086-251	0.3 NW of Jct US 212 W & US 281 S	319.89	40	12795.6	30	2622	84		
US 212	315.66	58-183-250	1.7 W of Frankfort	254	44	11176	0				
US 212	321.92	58-242-240	0.1 W of Jct US 212 W & SD 37 S	130	40	5200	0				
US 281	146.39	58-101-321	3.9 S of Jct SD 26 & US 281	245.44	39.83	9775.88	35	2533	84		
US 281	154.45	58-095-249	0.5 N of Jct US 212 E & US 281 N	164.31	52	8544.12	30				
US 281	159.71	58-100-197	5.8 N of Jct US 212 E & US 281 N	186.25	44	8195	27	3496	92		



## BRIDGE CLEANING

Attachment 2  
(Example)

BEADLE, BUFFALO, CLARK, HAND, HYDE, KINGSBURY, AND SPINK COUNTIES

# RECORD OF BRIDGE CLEANING

ROUTE	MRM	STR. NO.	Arrival Date and Time	Time Sweeping Started	Time Sweeping Ended	Departure Time
<i>(Example entry)</i>						
SD 28	123.57	12-224-558	4/6/18	4:05 PM	4:30 PM	4:40 PM
			3:35 PM			
<i>(Example entry when doing multiple bridges on divided highway)</i>						
I-29 N B & SB	Exit 140 to Exit 150	6 bridges total	4/10/18	8:20 AM	10:30 AM	10:45 AM
			7:50am			

Contractor Signature	Date
----------------------	------