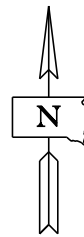
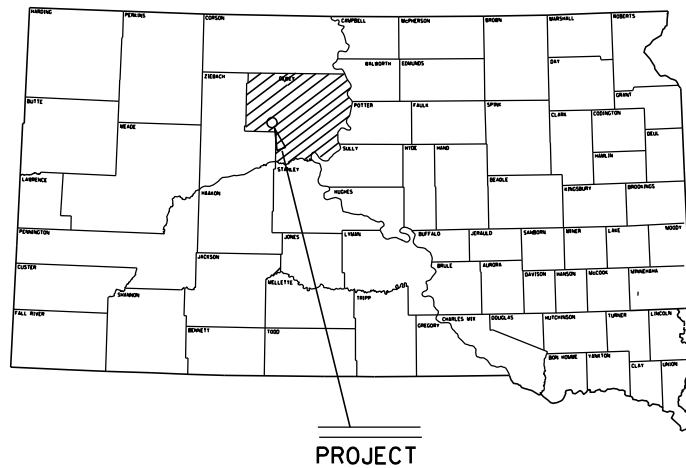


STATE OF SOUTH DAKOTA
DEPARTMENT OF TRANSPORTATION
PLANS FOR PROPOSED

PROJECTS 3775-D
SDDOT EAGLE BUTTE MAINTENANCE YARD
DEWEY COUNTY

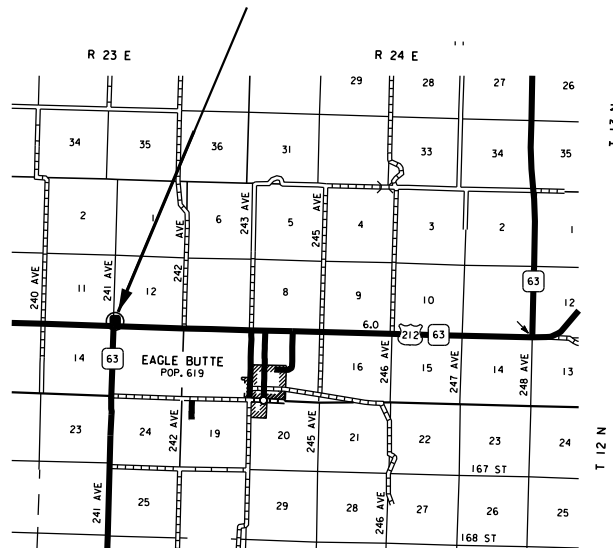
CONTRACTOR FURNISHED BORROW STOCKPILE

PCN I5UC



NO SCALE

Eagle Butte Stockpile Site
Stockpile Number 3775D
Dewey County
(SW1/4 SEC 12 T12N R23E)



INDEX OF PLAN SHEETS

SHEET NO. 1	LAYOUT MAP
SHEET NO. 2	INDEX OF PLAN SHEETS AND ESTIMATE OF QUANTITIES
SHEET NO. 3	SPECIFICATIONS & NOTES
SHEET NO. 4	STANDARD PLATES

ESTIMATE OF QUANTITIES

Bid Item Number	Item	Quantity	Unit
009E0010	Mobilization	LS	Lump Sum
120E0605	Stockpile Contractor Furnish Borrow	1000	CUYD
	(Eagle Butte Stockpile Site) Stockpile # 3775D		

SPECIFICATIONS

Standard Specifications for Roads and Bridges, 2015 Edition and Required Provisions, Supplemental Specifications and/or Special Provisions as included in the Proposal.

STOCKPILE CONTRACTOR FURNISHED BORROW

Contractor Furnished Borrow material will be uniform in texture and free from organic or objectionable (e.g. asphalt or concrete) material. The liquid limit will not exceed 45 and the plastic index will not exceed 25. All material must pass a 3-inch sieve. The material shall be placed in neatly shaped storage pile at the location designated in the plans. Material will be measured for payment once it is stockpiled at the 3775D stockpile site.

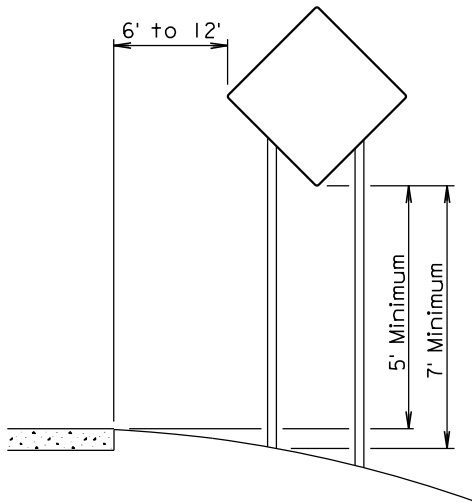
MAINTENANCE OF TRAFFIC

The Contractor shall furnish and install 48" x 48" TRUCK CROSSING signs, W8-6, to be placed on State or County highways or other well-traveled roadways. The signs shall be located a minimum of 550' in advance of intersections and approaches to the highway where the haul route crosses or turns onto/from the highway. The TRUCK CROSSING signs shall be installed for both directions of traffic travel. The exact number and location of the signs will be determined based on the pit location and haul road approved for use.

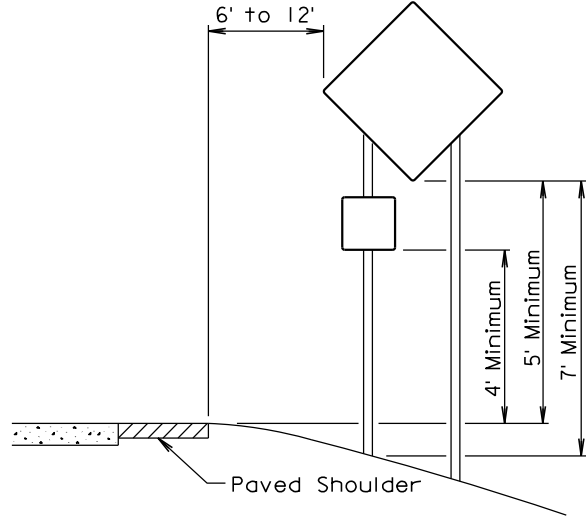
The TRUCK CROSSING signs shall be displayed at all times when the haul vehicles are hauling material from the pit to the stockpile site. During non-working hours, the signs shall be covered or removed from view. Hinged signs may be used. There will be no direct payment for the TRUCK CROSSING signs. All costs for furnishing, installation, maintenance and removal of the signs shall be absorbed in the various contract items.

HAUL ROADS

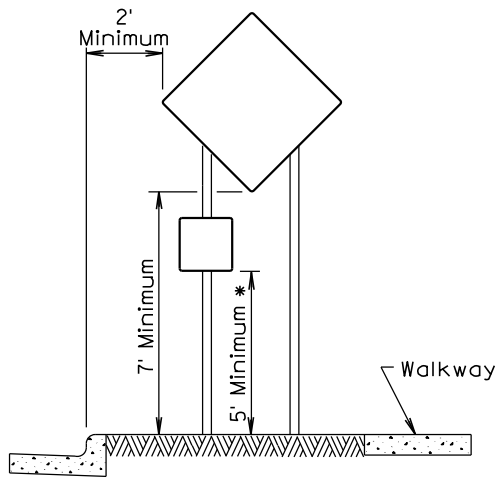
The Contractor shall be responsible for any haul roads used to transport material to the stockpile site. The State will not participate in the cost of restoration of any haul roads used by the Contractor.



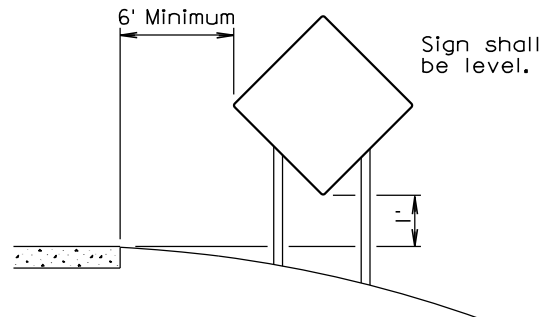
RURAL DISTRICT



RURAL DISTRICT WITH
SUPPLEMENTAL PLATE



URBAN DISTRICT



RURAL DISTRICT
3 DAY MAXIMUM

(Not applicable to regulatory signs)

* If the bottom of supplemental plate is mounted lower than 7 feet above a pedestrian walkway, the supplemental plate should not project more than 4" into the pedestrian facility.

September 22, 2014

Published Date: 4th Qtr. 2019

**S
D
D
O
T**

CRASHWORTHY SIGN SUPPORTS
(Typical Construction Signing)

PLATE NUMBER
634.85

Sheet 1 of 1