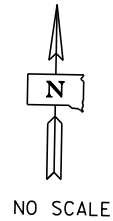
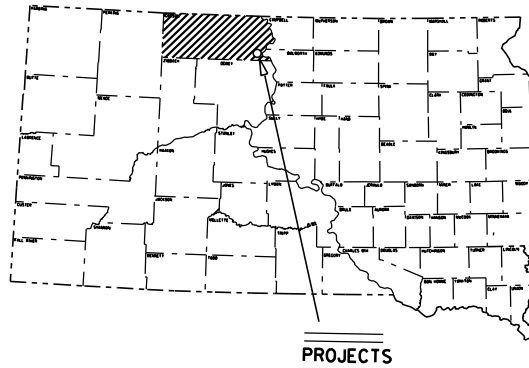


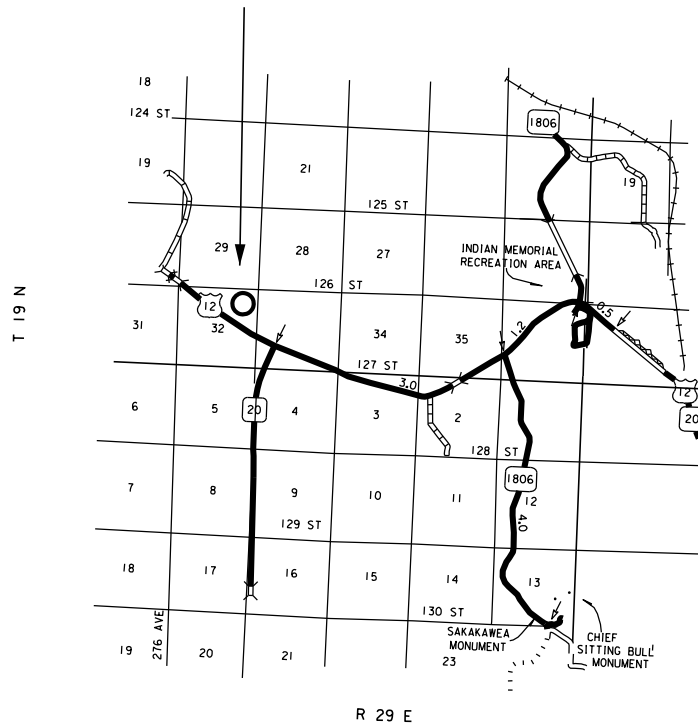
STATE OF SOUTH DAKOTA
DEPARTMENT OF TRANSPORTATION
PLANS FOR PROPOSED

PROJECTS 3742-R
SDDOT MOBRIDGE STOCKPILE SITE
CORSON COUNTY

CLASS A RIPRAP STOCKPILE
PCN I69A



Mobridge Stockpile Site
Stockpile Number 3742R
Corson County
(NE1/4 SEC 32 T19N R29E)



INDEX OF PLAN SHEETS

SHEET NO. 1	LAYOUT MAP
SHEET NO. 2	INDEX OF PLAN SHEETS AND ESTIMATE OF QUANTITIES
SHEET NO. 3	SPECIFICATIONS & NOTES
SHEET NO. 4	STANDARD PLATES

ESTIMATE OF QUANTITIES

Bid Item Number	Item	Quantity	Unit
009E0010	Mobilization	LS	Lump Sum
700E0110	Class A Riprap	1000	Ton
	(Mobridge Stockpile Site) Stockpile # 3742R		

SPECIFICATIONS

Standard Specifications for Roads and Bridges, 2015 Edition and Required Provisions, Supplemental Specifications and/or Special Provisions as included in the Proposal.

STOCKPILE CONSTRUCTION

The Contractor shall find out the exact location to place the stockpile at and also the desired shape of the finished stockpile. If the shape and location are not done properly as per Maintenance Supervisors instructions, the Contractor shall correct the stockpile before any payment for materials is made.

CLASS A RIPRAP

Class A riprap shall conform to the requirements of the Specifications (Section 830) and shall be furnished by the Contractor.

The contract unit price per ton shall include all costs for furnishing and stockpiling the Class A riprap.

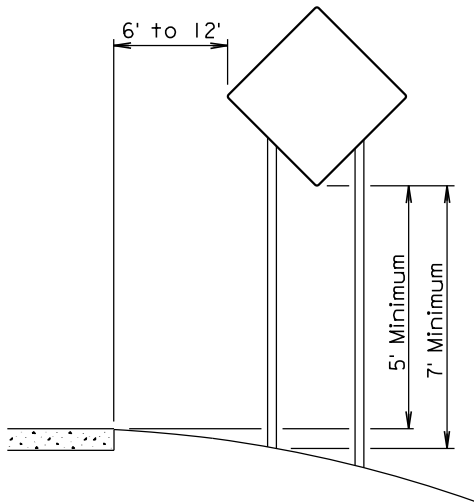
MAINTENANCE OF TRAFFIC

The Contractor shall furnish and install 48" x 48" TRUCK CROSSING signs, W8-6, to be placed on State or County highways or other well-traveled roadways. The signs shall be located a minimum of 550' in advance of intersections and approaches to the highway where the haul route crosses or turns onto/from the highway. The TRUCK CROSSING signs shall be installed for both directions of traffic travel. The exact number and location of the signs will be determined based on the pit location and haul road approved for use.

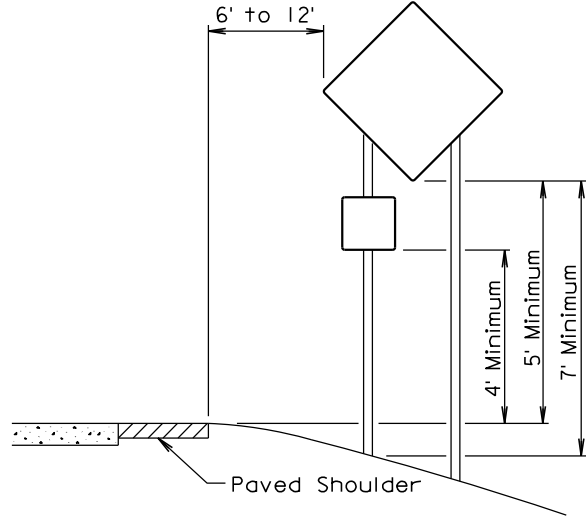
The TRUCK CROSSING signs shall be displayed at all times when the haul vehicles are hauling material from the pit to the stockpile site. During non-working hours, the signs shall be covered or removed from view. Hinged signs may be used. There will be no direct payment for the TRUCK CROSSING signs. All costs for furnishing, installation, maintenance and removal of the signs shall be absorbed in the various contract items.

HAUL ROADS

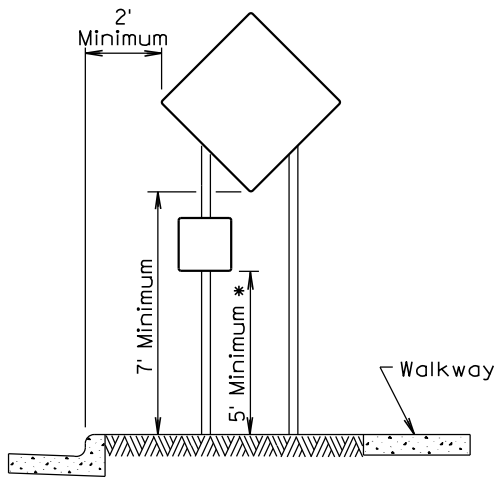
The Contractor shall be responsible for any haul roads used to transport material to the stockpile site. The State will not participate in the cost of restoration of any haul roads used by the Contractor.



RURAL DISTRICT

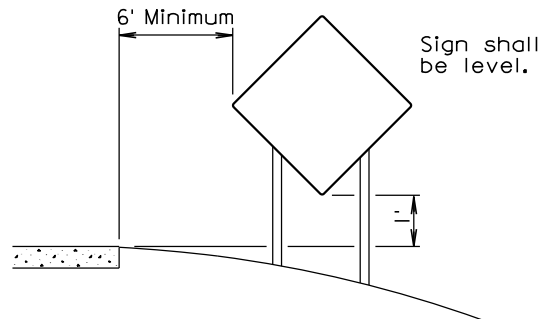


RURAL DISTRICT WITH
SUPPLEMENTAL PLATE



URBAN DISTRICT

* If the bottom of supplemental plate is mounted lower than 7 feet above a pedestrian walkway, the supplemental plate should not project more than 4" into the pedestrian facility.



RURAL DISTRICT
3 DAY MAXIMUM

(Not applicable to regulatory signs)

September 22, 2014

Published Date: 1st Qtr. 2021

**S
D
D
O
T**

CRASHWORTHY SIGN SUPPORTS
(Typical Construction Signing)

PLATE NUMBER
634.85

Sheet 1 of 1