

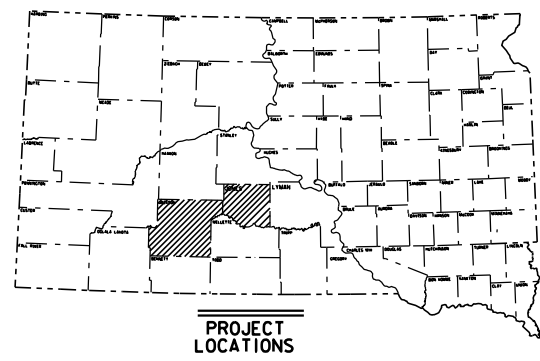
STATE OF SOUTH DAKOTA
DEPARTMENT OF TRANSPORTATION

PLANS FOR PROPOSED
PROJECTS 090 E-391 & 090 W-391
INTERSTATE 90
JACKSON AND JONES COUNTIES

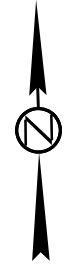
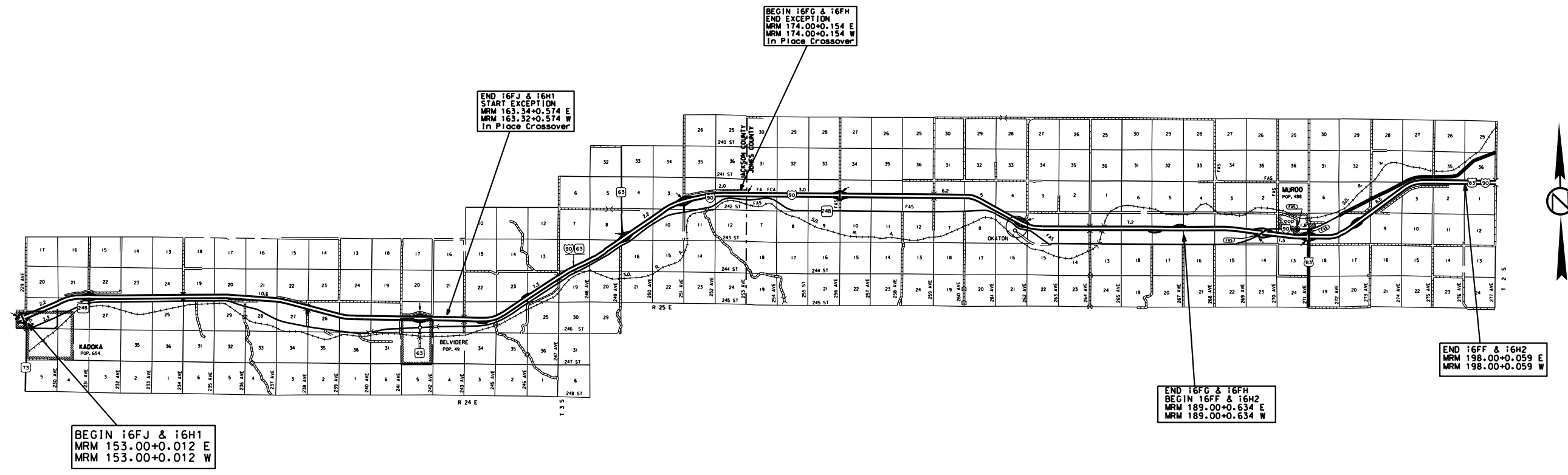
FLUSHING SHOULDERS
PCN 16FF, 16FG, 16FH, 16FJ, 16H1 & 16H2

INDEX OF SHEETS

- 1 Title Page
- 2 - 3 Plan Notes
- 4 Standard Plate



Plot Scale - 1:200



DESIGN DESIGNATION	
MRM 153.00	
ADT (2020)	3,423
ADT (2040)	3,939
DHV	165.8
D	51
T DHV	24.7
T ADT	29.4
V	80 mph

STORM WATER PERMIT
(None required)

16FF	=	MRM 189.00+0.634	to	MRM 198.00+0.059	EB
16FG	=	MRM 174.00+0.154	to	MRM 189.00+0.634	WB
16FH	=	MRM 174.00+0.154	to	MRM 189.00+0.634	EB
16FJ	=	MRM 153.00+0.012	to	MRM 163.32+0.574	WB
16H1	=	MRM 153.00+0.012	to	MRM 163.34+0.574	EB
16H2	=	MRM 189.00+0.634	to	MRM 198.00+0.059	WB

ESTIMATE OF QUANTITIES
PCN i6FF

BID ITEM NUMBER	ITEM	QUANTITY	UNIT
* 009E0010	Mobilization	Lump Sum	LS
* 330E0210	SS-1h or CSS-1h Asphalt for Flush Seal	13.8	Ton
* 634E0010	Flagging	5.0	Hour
* 634E0120	Traffic Control, Miscellaneous	Lump Sum	LS
* 634E1215	Contractor Furnished Portable Changeable Message Sign	1	Each

* - Denotes Non-Participating

PCN i6FG

BID ITEM NUMBER	ITEM	QUANTITY	UNIT
* 009E0010	Mobilization	Lump Sum	LS
* 330E0210	SS-1h or CSS-1h Asphalt for Flush Seal	25.3	Ton
* 634E0010	Flagging	5.0	Hour
* 634E0120	Traffic Control, Miscellaneous	Lump Sum	LS
* 634E1215	Contractor Furnished Portable Changeable Message Sign	1	Each

* - Denotes Non-Participating

PCN i6FH

BID ITEM NUMBER	ITEM	QUANTITY	UNIT
* 009E0010	Mobilization	Lump Sum	LS
* 330E0210	SS-1h or CSS-1h Asphalt for Flush Seal	25.3	Ton
* 634E0010	Flagging	5.0	Hour
* 634E0120	Traffic Control, Miscellaneous	Lump Sum	LS
* 634E1215	Contractor Furnished Portable Changeable Message Sign	1	Each

* - Denotes Non-Participating

PCN i6FJ

BID ITEM NUMBER	ITEM	QUANTITY	UNIT
* 009E0010	Mobilization	Lump Sum	LS
* 330E0210	SS-1h or CSS-1h Asphalt for Flush Seal	16.4	Ton
* 634E0010	Flagging	5.0	Hour
* 634E0120	Traffic Control, Miscellaneous	Lump Sum	LS
* 634E1215	Contractor Furnished Portable Changeable Message Sign	1	Each

* - Denotes Non-Participating

PCN i6H1

BID ITEM NUMBER	ITEM	QUANTITY	UNIT
* 009E0010	Mobilization	Lump Sum	LS
* 330E0210	SS-1h or CSS-1h Asphalt for Flush Seal	16.5	Ton
* 634E0010	Flagging	5.0	Hour
* 634E0120	Traffic Control, Miscellaneous	Lump Sum	LS
* 634E1215	Contractor Furnished Portable Changeable Message Sign	1	Each

* - Denotes Non-Participating

PCN i6H2

BID ITEM NUMBER	ITEM	QUANTITY	UNIT
* 009E0010	Mobilization	Lump Sum	LS
* 330E0210	SS-1h or CSS-1h Asphalt for Flush Seal	13.8	Ton
* 634E0010	Flagging	5.0	Hour
* 634E0120	Traffic Control, Miscellaneous	Lump Sum	LS
* 634E1215	Contractor Furnished Portable Changeable Message Sign	1	Each

* - Denotes Non-Participating

All Standard Bid Items can be found and easily searched for on the SDDOT Website: <https://dot.sd.gov/> → Doing Business → Engineering/Design Services → Standard Bid Items
Quick Link to Standard Bid Items: <http://apps.sd.gov/HC70SBI/main.aspx>

SPECIFICATIONS

Standard Specifications for Roads and Bridges, 2015 Edition and Required Provisions, Supplemental Specifications and Special Provisions as included in the Proposal.

SEQUENCE OF OPERATIONS

The Contractor will submit a sequence of operations for approval two weeks prior to the preconstruction meeting. Approval of an alternate sequence of operations will only be allowed when the proposed changes meet with the Department's intent for traffic control and sequencing of the work. An alternate sequence will be submitted for review a minimum of one week prior to potential implementation.

SHOULDER CLEARING

Prior to construction, Department of Transportation maintenance forces will spray the shoulders to kill existing vegetation. It is the Contractor's responsibility to notify the State a minimum of thirty days prior to starting work on the surface of the highway. The State assumes no responsibility for the effectiveness of the herbicide applied.

Cost for this work will be included in the contract unit price per mile for Shoulder Clearing.

GENERAL TRAFFIC CONTROL

All construction operations will be conducted in the general direction of traffic movement.

If there is a discrepancy between the traffic control plans, standard plates, and the MUTCD, whichever is more stringent will be used, as determined by the Engineer.

Unless otherwise stated in these plans, work will not be allowed during hours of darkness.

Traffic will be maintained on the driving lanes. Use of the shoulder as a driving lane will not be permitted. Any damage to the shoulder due to rerouted traffic or Contractor's equipment will be repaired at no expense to the Department.

A mobile work operation will be allowed provided the rumble strip or rumble stripe grooving, flush sealing, and pavement marking can be completed satisfactorily by a continuously moving work operation. A mobile work operation will require approval by the Engineer.

TRAFFIC CONTROL, MISCELLANEOUS

All costs for traffic control, including signs, will be incidental to the contract lump sum price for "Traffic Control, Miscellaneous."

CONTACTOR FURNISHED PORTABLE CHANGEABLE MESSAGE SIGN

Portable changeable message signs will be pulled along with the mobile operation. The PCMS will remain 1,500 feet behind the mobile operation.

When work begins that will affect traffic patterns, the Contractor will program the portable changeable message signs (PCMS) with the following message when working on the outside lane:

ROAD WORK AHEAD
RIGHT LANE CLOSED AHEAD

When work changes to the inside shoulder, the PCMS will be changed to the following message:

ROAD WORK AHEAD
LEFT LANE CLOSED AHEAD

RATES OF MATERIALS

The Estimate of Quantities is based on the following quantities of material per PCN.

PCN i6FF (MRM 189.00+0.634 to MRM 198.00+0.059 EB)

SS-1h or CSS-1h Asphalt for Flush Seal at the rate of 1.63 tons applied 4 feet and 9 feet wide. (Rate = 0.05 gallons per square yard).

PCN i6FG (MRM 174.00+0.154 to MRM 189.00+0.634 WB)

SS-1h or CSS-1h Asphalt for Flush Seal at the rate of 1.63 tons applied 4 feet and 9 feet wide. (Rate = 0.05 gallons per square yard).

PCN i6FH (MRM 174.00+0.154 to MRM 189.00+0.634 EB)

SS-1h or CSS-1h Asphalt for Flush Seal at the rate of 1.63 tons applied 4 feet and 9 feet wide. (Rate = 0.05 gallons per square yard).

PCN i6FJ (MRM 153.00+0.012 to MRM 163.32+0.574 WB)

SS-1h or CSS-1h Asphalt for Flush Seal at the rate of 1.5 tons applied 4 feet and 8 feet wide. (Rate = 0.05 gallons per square yard).

PCN i6H1 (MRM 153.00+0.012 to MRM 163.34+0.574 EB)

SS-1h or CSS-1h Asphalt for Flush Seal at the rate of 1.5 tons applied 4 feet and 8 feet wide. (Rate = 0.05 gallons per square yard).

PCN i6H2 (MRM 189.00+0.634 to MRM 198.00+0.059 WB)

SS-1h or CSS-1h Asphalt for Flush Seal at the rate of 1.63 tons applied 4 feet and 9 feet wide. (Rate = 0.05 gallons per square yard).

STATE OF SOUTH DAKOTA	PROJECT	SHEET	TOTAL SHEETS
	090 E-391 & 090 W-391	3	4

Plotting Date: 05/07/2021

1:200
Plot Scale -

- Plotted From - TRW11NT35

File - ...IReview #116FF_Nonsection.dgn

Plot Scale - 1:200

* Messages on signs will vary depending on the operation being conducted.

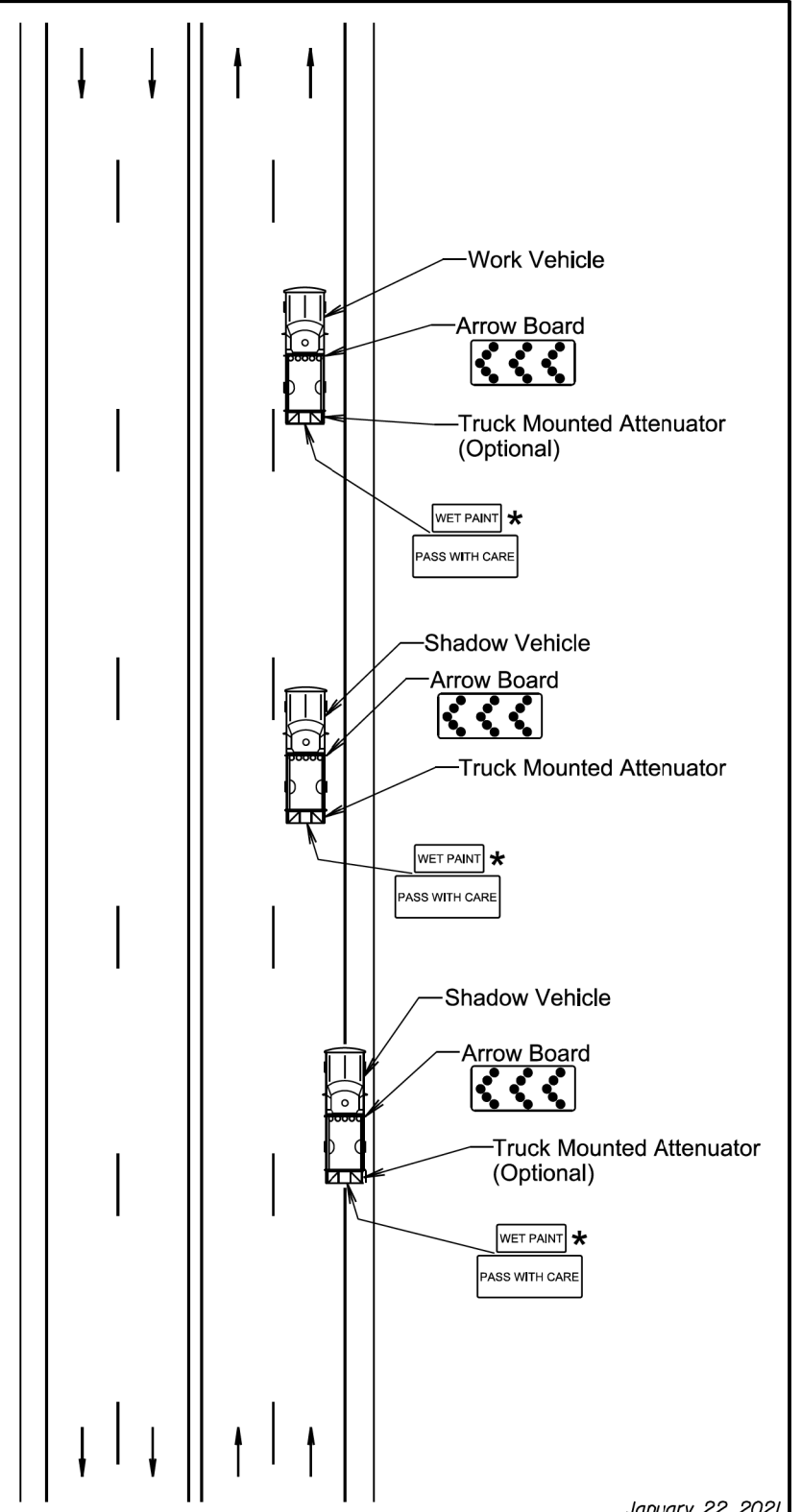
Vehicle-mounted signs will be mounted in a manner such that they are not obscured by equipment or supplies. Sign legends on vehicle-mounted signs will be covered or turned from view when work is not in progress.

Shadow and Work vehicles will display high-intensity rotating, flashing, oscillating, or strobe lights, flags, signs, or arrow boards.

Vehicle hazard warning signals will not be used instead of the vehicle's high-intensity rotating, flashing, oscillating, or strobe lights.

Arrow boards will, as a minimum, be Type B, with a size of 60" x 30".

All costs associated with the traffic control for mobile operation including signs, arrow boards and equipment will be incidental to the contract lump sum price for "Traffic Control, Miscellaneous".



January 22, 2021

- Plotted From - TRW11NT35

File - ...IReview #116FF_Nonsection.dgn