

**STATE OF SOUTH DAKOTA
DEPARTMENT OF TRANSPORTATION
PLANS FOR PROPOSED**

**PROJECT 053-391
OLD SD 53
LYMAN COUNTY**

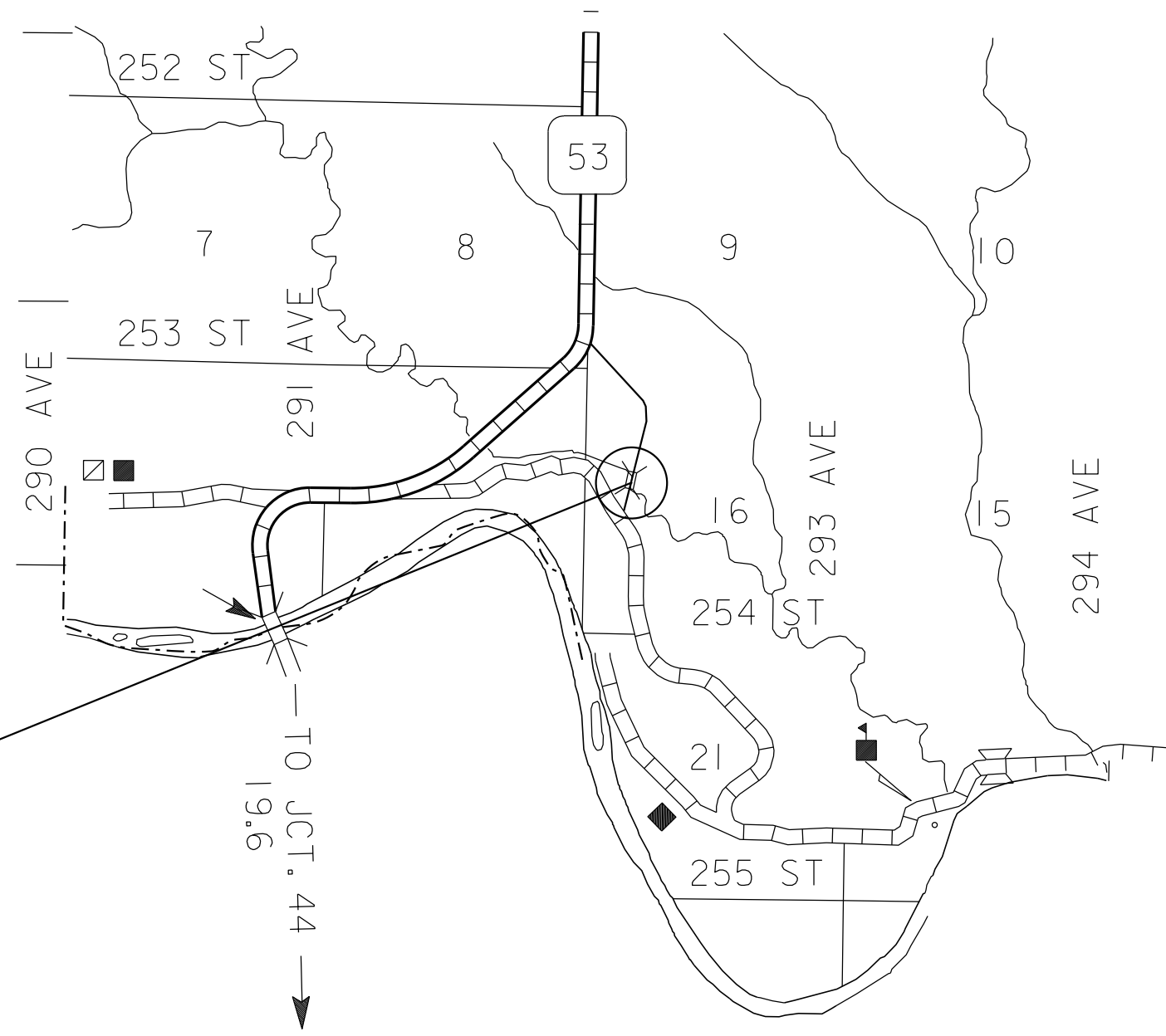
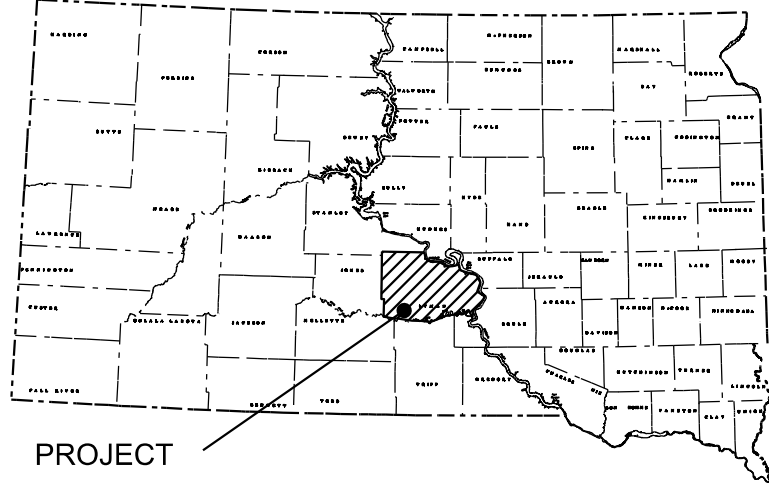
REMOVE STRUCTURE
PCN I6XG

STATE OF SOUTH DAKOTA	PROJECT	SHEET	TOTAL SHEETS
	053-391	1	10

Plotting Date: 02/16/2023

INDEX OF SHEETS

- Sheet 1 General Layout W/ Index
- Sheet 2 - 3 Estimate of Quantities & Environmental Commitments
- Sheet 4 Standard Notes
- Sheet 5 Permanent Signing Layout
- Sheet 6 Standard Plates
- Sheet 7 - 10 Original Bridge Construction Plans



STR. NO. 43-031-324
 OLD HWY 53 - RIVER ROAD
 STRUCTURE OVER WILLIAMS CREEK

9.6
 TO JCT. 44

Plot Scale - 1:200

Plotted From - TRM\INT26

File - ...Design\Note Template.dgn

ESTIMATE OF QUANTITIES

BID ITEM NUMBER	ITEM	QUANTITY	UNIT
* 250E0030	Incidental Work, Structure	Lump Sum	LS
* 634E0110	Traffic Control Signs	50.0	SqFt
* 634E0120	Traffic Control, Miscellaneous	Lump Sum	LS
* 634E0275	Type 3 Barricade	11	Each
* 634E0705	Remove and Reset Traffic Control Movable Concrete Barrier	6	Each
* 730E0204	Type C Permanent Seed Mixture	3	Lb
* 734E0102	Type 2 Erosion Control Blanket	133	SqYd
* 734E0154	12" Diameter Erosion Control Wattle	300	Ft
* 734E0510	Shaping for Erosion Control Blanket	150	Ft

* - Denotes Non-Participating

ENVIRONMENTAL COMMITMENTS

The SDDOT is committed to protecting the environment and uses Environmental Commitments as a communication tool for the Engineer and Contractor to ensure that attention is given to avoid, minimize, and/or mitigate an environmental impact. Environmental commitments to various agencies and the public have been made to secure approval of this project. An agency with permitting authority can delay a project if identified environmental impacts have not been adequately addressed. Unless otherwise designated, the Contractor's primary contact regarding matters associated with these commitments will be the Project Engineer. During construction, the Project Engineer will verify that the Contractor has met Environmental Commitment requirements. These environmental commitments are not subject to change without prior written approval from the SDDOT Environmental Office.

Additional guidance on SDDOT's Environmental Commitments can be accessed through the Environmental Procedures Manual found at: <https://dot.sd.gov/media/documents/EnvironmentalProceduresManual.pdf> >

For questions regarding change orders in the field that may have an effect on an Environmental Commitment, the Project Engineer will contact the Environmental Engineer at 605-773-3180 or 605-773-4336 to determine whether an environmental analysis and/or resource agency coordination is necessary.

Once construction is complete, the Project Engineer will review all environmental commitments for the project and document their completion.

COMMITMENT B: FEDERALLY THREATENED, ENDANGERED, AND PROTECTED SPECIES

COMMITMENT B2: WHOOPING CRANE

The Whooping Crane is a spring and fall migratory bird in South Dakota that is about 5 feet tall and typically stops on wetlands, rivers, and agricultural lands along their migration route. An adult Whooping Crane is white with a red crown and a long, dark, pointed bill. Immature Whooping Cranes are cinnamon brown. While in flight, their long necks are kept straight and their long dark legs trail behind. Adult Whooping Cranes' black wing tips are visible during flight.

Action Taken/Required:

Harassment or other measures to cause the Whooping Crane to leave the site is a violation of the Endangered Species Act. If a Whooping Crane is sighted roosting in the vicinity of the project, borrow pits, or staging areas associated with the project, cease construction activities in the affected area until the Whooping Crane departs and immediately contact the Project Engineer. The Project Engineer will contact the Environmental Office so that the sighting can be reported to USFWS.

COMMITMENT C: WATER SOURCE

The Contractor will not withdraw water with equipment previously used outside the State of South Dakota or previously used in aquatic invasive species (AIS) positive waters within South Dakota without prior approval from the SDDOT Environmental Office. To prevent and control the introduction and spread of invasive species into the project vicinity, all equipment will be power washed with hot water (≥ 140 °F) and completely dried for a minimum of 7 days prior to subsequent use. South Dakota administrative rule 41:10:04:02 forbids the possession and transport of AIS; therefore, all attached dirt, mud, debris and vegetation must be removed and all compartments and tanks capable of holding standing water must be drained. This includes, but is not limited to, all equipment, pumps, lines, hoses and holding tanks.

Action Taken/Required:

The Contractor will obtain the necessary permits from the regulatory agencies such as the South Dakota Department of Agriculture and Natural Resources (DANR) and the United States Army Corps of Engineers (USACE) prior to water extraction activities.

Additional information and mapping of water sources impacted by Aquatic Invasive Species in South Dakota can be accessed at:

< <http://sdleastwanted.com/maps/default.aspx> >

< [South Dakota Administrative Rule 41:10:04 Aquatic Invasive Species: https://sdlegislature.gov/rules/DisplayRule.aspx?Rule=41:10:04](https://sdlegislature.gov/rules/DisplayRule.aspx?Rule=41:10:04) >

COMMITMENT D: WATER QUALITY STANDARDS

COMMITMENT D1: SURFACE WATER QUALITY

This project may be in the vicinity of multiple streams and wetlands. These waters are considered waters of the state and are protected under Administrative Rules of South Dakota (ARSD) Chapter 74:51. Special construction measures may have to be taken to ensure that this water body is not impacted.

Action Taken/Required:

The Contractor is advised that the South Dakota Surface Water Quality Standards, administered by the South Dakota Department of Agriculture and Natural Resources (DANR), apply to this project. Special construction measures will be taken to ensure the above standard(s) of the surface waters are maintained and protected.

COMMITMENT D2: SURFACE WATER DISCHARGE

The DANR General Permit for Temporary Discharge is required for temporary dewatering and discharges to waters of the state. The effluent limit for total suspended solids will be 90 mg/L 30-day average. The effluent limit applies to discharges to all waters of the state except discharges to waters classified as cold water permanent fish life propagation waters according to the ARSD 74:51:01:45. For discharges to waters of the state classified as cold water permanent fish life propagation waters, the effluent limit for total suspended solids will be 53 mg/L daily maximum.

The permittee has the option of completing effluent testing or implementing a pollution prevention plan for compliance with this permit. If the permittee develops a pollution prevention plan instead of total suspended solids sampling, the plan must be developed and implemented prior to discontinuing total suspended solids sampling. Refer to Section 4.0 of the permit. If any pollutants are suspected of being discharged, a sample must be taken for those parameters listed in Section 3.4 of the permit.

Refer to Commitment D1: Surface Water Quality for stream classification.

Action Taken/Required:

If construction dewatering is required and this project is not required to be covered under a General Permit for Stormwater Discharges Associated with Construction Activities, the Contractor will obtain the General Permit for Temporary Discharge Activities from the DANR Surface Water Program, 605-773-3351.

<

https://danr.sd.gov/OfficeOfWater/SurfaceWaterQuality/docs/DANR_TemporaryDischargeNOI2018Fillable.pdf >

The Contractor will provide a copy of the approved permit or the submitted dewatering information to the Project Engineer prior to proceeding with any dewatering activities. The approved permit or submitted dewatering information must be kept on-site and as part of the project records.

Effluent monitoring, as a result of dewatering activities, will be summarized for each month and recorded on a separate Discharge Monitoring Report (DMR) and submitted to DANR monthly. Additional information can be found at:

< <https://danr.sd.gov/Conservation/WatershedProtection/TMDL/default.aspx> >

COMMITMENT E: STORM WATER

Construction activities constitute less than 1 acre of disturbance.

Action Taken/Required:

At a minimum and regardless of project size, appropriate erosion and sediment control measures must be installed to control the discharge of pollutants from the construction site.

COMMITMENT H: WASTE DISPOSAL SITE

The Contractor will furnish a site(s) for the disposal of construction and/or demolition debris generated by this project.

Action Taken/Required:

Construction and/or demolition debris may not be disposed of within the Public ROW.

The waste disposal site(s) will be managed and reclaimed in accordance with the following from the General Permit for Construction/Demolition Debris Disposal Under the South Dakota Waste Management Program issued by the Department of Agriculture and Natural Resources.

The waste disposal site(s) will not be located in a wetland, within 200 feet of surface water, or in an area that adversely affects wildlife, recreation, aesthetic value of an area, or any threatened or endangered species, as approved by the Environmental Office and the Project Engineer.

If the waste disposal site(s) is located such that it is within view of any ROW, the following additional requirements will apply:

1. Construction and/or demolition debris consisting of concrete, asphalt concrete, or other similar materials will be buried in a trench separate from wood debris. The final cover over the construction and/or demolition debris will consist of a minimum of 1 foot of soil capable of supporting vegetation. Waste disposal sites provided outside of the Public ROW will be seeded in accordance with Natural Resources Conservation Service recommendations. The seeding recommendations may be obtained through the appropriate County NRCS Office. The Contractor will control the access to waste disposal sites not within the Public ROW with fences, gates, and placement of a sign or signs at the entrance to the site stating, "No Dumping Allowed".

2. Concrete and asphalt concrete debris may be stockpiled within view of the ROW for a period not to exceed the duration of the project. Prior to project completion, the waste will be removed from view of the ROW or buried, and the waste disposal site reclaimed as noted above.

The above requirements will not apply to waste disposal sites that are covered by an individual solid waste permit as specified in SDCL 34A-6-58, SDCL 34A-6-1.13, and ARSD 74:27:10:06.

Failure to comply with the requirements stated above may result in civil penalties in accordance with South Dakota Solid Waste Law, SDCL 34A-6-1.31.

All costs associated with furnishing waste disposal site(s), disposing of waste, maintaining control of access (fence, gates, and signs), and reclamation of the waste disposal site(s) will be incidental to the various contract items.

COMMITMENT I: HISTORIC PRESERVATION OFFICE CLEARANCES

State Historic Preservation Office (SHPO or THPO) concurrence has not been obtained for this project.

Action Taken/Required:

All earth disturbing activities not designated within the plans require a cultural resource review prior to scheduling the pre-construction meeting. This work includes but is not limited to: Contractor furnished material sources, material processing sites, stockpile sites, storage areas, plant sites, and waste areas.

The Contractor will arrange and pay for a record search and when necessary, a cultural resource survey. The Contractor has the option to contact the state Archaeological Research Center (ARC) at 605-394-1936 or another qualified archaeologist, to obtain either a records search or a cultural resources survey. A record search might be sufficient for review if the site was previously surveyed; however, a cultural resources survey may need to be conducted by a qualified archaeologist.

The Contractor will provide ARC with the following: a topographical map or aerial view in which the site is clearly outlined, site dimensions, project number, and PCN. If applicable, provide evidence that the site has been previously disturbed by farming, mining, or construction activities with a landowner statement that artifacts have not been found on the site.

The Contractor will submit the cultural resources survey report to SDDOT Environmental Office, 700 East Broadway Avenue, Pierre, SD 57501-2586. SDDOT will submit the information to the appropriate SHPO/THPO. Allow **30 Days** from the date this information is submitted to the Environmental Engineer for SHPO/THPO review.

In the event of an inadvertent discovery of human remains, funerary objects, or if evidence of cultural resources is identified during project construction activities, then such activities within 150 feet of the inadvertent discovery will immediately cease and the Project Engineer will be immediately notified. The Project Engineer will contact the SDDOT Environmental Office, who will contact the appropriate SHPO/THPO within 48 hours of the discovery to determine an appropriate course of action.

The Contractor is responsible for obtaining any additional permits and clearances for Contractor furnished material sources, material processing sites, stockpile sites, storage areas, plant sites, and waste areas that affect wetlands, threatened and endangered species, or waterways. The Contractor will not utilize a site known or suspected of having contaminated soil or water. The Contractor will provide the required permits and clearances to the Project Engineer at the preconstruction meeting.

COMMITMENT T: STATE THREATENED SPECIES

The State of South Dakota Game, Fish, and Parks has identified the Sturgeon Chub be in the immediate project area.

Action Taken/Required:

Construction or demolition activities should not take place during the Seasonal Work Restriction listed in the below table to avoid conflicts with spawning fish. If flows during this time are nonexistent or extremely low, the seasonal use restriction may not be applicable. The Contractor will not conduct in-stream work during the Seasonal Work Restriction without prior approval from the SDDOT Environmental Office.

Stream Name	Stream Classification	Seasonal Work Restriction
Tributary	Warm Water	April 1-July 31

SCOPE OF WORK

The work required for this project includes, but is not limited to the following items, not listed in order of execution.

- Install traffic control
- Install temporary erosion and sediment control
- Remove bridge
- Install permanent erosion and sediment control
- Install/reset permanent signing

NOTICE – LEAD BASED PAINT

Be advised that the paint on the steel surfaces of the existing structure contains lead. The Contractor should plan his/her operations accordingly and inform his/her employees of the hazards of lead exposure.

INCIDENTAL WORK, STRUCTURE

1. In place is a 120' 6" bridge with an 18' 0" clear roadway. The superstructure consists of 3 spans with a 50' 0" pony truss span and two reinforced concrete deck and steel railing spans. The substructure consists of two concrete sills and two piers, all of which are supported on piling.
2. Break down and remove the existing bridge to 1 foot below finished ground line. All portions of the existing bridge will be removed and disposed of by the Contractor on a site obtained by the Contractor and approved by the Engineer in accordance with the WASTE DISPOSAL SITE notes.
3. During demolition of the structure, efforts will be taken to prevent material from falling into the creek.
4. The foregoing is a general description of the in-place bridge and should not be construed to be complete in all details. Before preparing the bid, it will be the responsibility of the Contractor to make a visual inspection of the structure to verify the extent of the work and materials involved.

TRAFFIC CONTROL

The existing traffic control at the bridge site is to remain in place and/or be reset after work is complete. Existing traffic control includes Type 3 Barricades with a road closed sign mounted at both ends of the bridge as well as 550' N of the bridge. Behind the Type 3 Barricades at the bridge ends are movable concrete barriers. In addition, new type 3 barricades with road closed signs mounted will be installed at the intersecting roads. See Permanent Sign Layout sheet for details. The cost for installation or resetting permanent traffic control will include labor, materials and all incidentals and will be paid under the respective bid items "Remove and Reset Traffic Control Movable Concrete Barrier", "Type 3 Barricade" and "Traffic Control Signs".

EROSION CONTROL WATTLE

Erosion control wattles for restraining the flow of runoff and sediment will be installed at locations noted in the table and at locations determined by the Engineer during construction. Refer to Standard Plate 734.06 for details.

The Contractor will provide certification that the erosion control wattles do not contain noxious weed seeds.

Erosion control wattles will remain on the project to decompose.

The erosion control wattle provided will be from the approved product list. The approved product list for erosion control wattle may be viewed at the following internet site:

<http://apps.sd.gov/HC60ApprovedProducts/main.aspx>

TABLE OF EROSION CONTROL WATTLE

Location	Spacing	Diameter (Inch)	Quantity (Ft)
South Embankment of Bridge	Every 50' down embankment	12"	180
North Embankment of Bridge		12"	60
	Additional Quantity:	12"	60
			300

EROSION CONTROL BLANKET

Erosion control blanket will be installed 24 feet wide at the locations noted in the table and at locations determined by the Engineer during construction.

The erosion control blanket provided will be from the approved product list. The approved product list for erosion control blanket may be viewed at the following internet site:

<http://apps.sd.gov/HC60ApprovedProducts/main.aspx>

TABLE OF EROSION CONTROL BLANKET

Station	Location	Type	Quantity (SqYd)
North Embankment of Bridge	Embankment	2	133.3
	Total Type 2 Erosion Control Blanket:		133.3

SHAPING FOR EROSION CONTROL BLANKET

The ditches will be shaped for the erosion control blanket as specified on Standard Plate 734.01.

PERMANENT SEEDING

The areas to be seeded include all disturbed areas within the project limits.

Type C Permanent Seed Mixture will consist of the following:

Grass Species	Variety	Pure Live Seed (PLS) (Pounds/Acre)
Western Wheatgrass	Arriba, Flintlock, Rodan, Rosana, Walsh	16
Canada Wildrye	Mandan	2
	Total:	18

ITEMIZED LIST FOR TRAFFIC CONTROL SIGNS

SIGN CODE	SIGN DESCRIPTION	CONVENTIONAL ROAD			
		NUMBER	SIGN SIZE	SQFT PER SIGN	SQFT
R11-2	ROAD CLOSED	5	48" x 30"	10.0	50.0
				CONVENTIONAL ROAD TRAFFIC CONTROL SIGNS SQFT	50.0

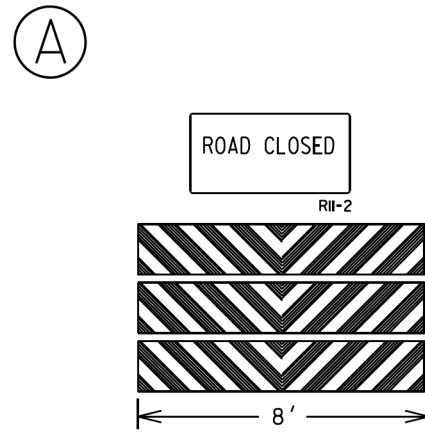
PERMANENT SIGNING LAYOUT

STATE OF SOUTH DAKOTA	PROJECT 053-391	SHEET 5	TOTAL SHEETS 10
-----------------------	--------------------	------------	--------------------

Plotting Date: 02/16/2023

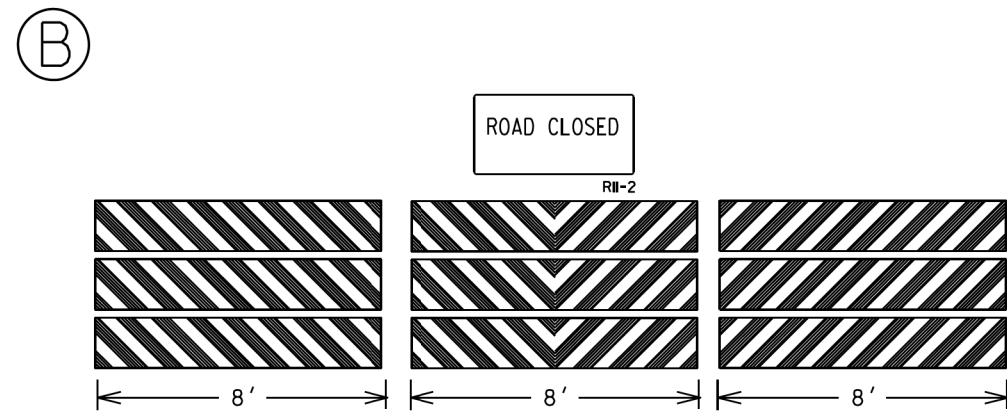
Plot Scale - 1:200.941

- Plotted From - TIRWIN126



NOTES:

A Type 3 Barricade will be installed at the ROW line at the intersection with SD 53 and Perry Ranch Rd.



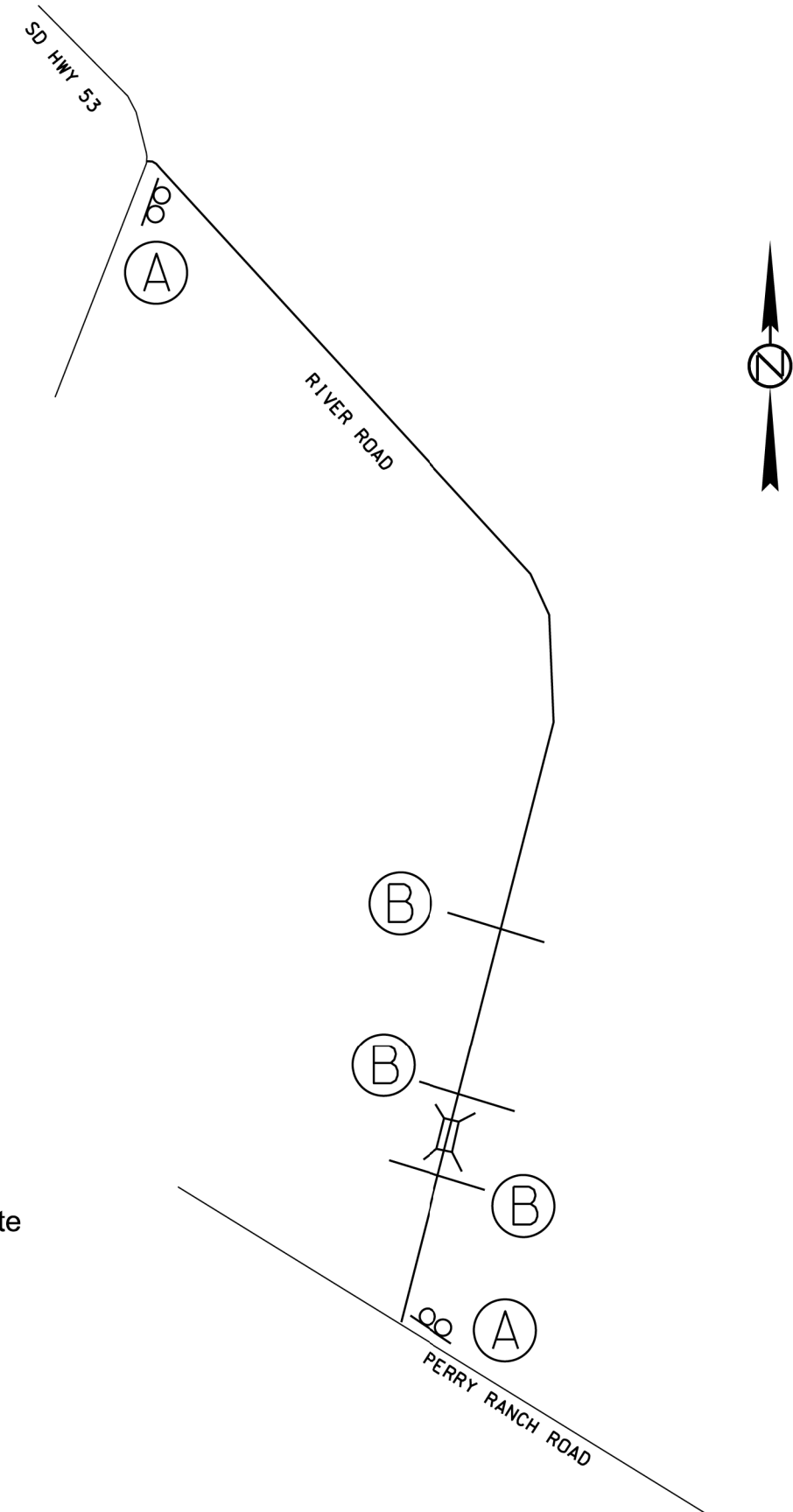
NOTES:

Type 3 Barricade stripes will be retroreflective white and retroreflective red.

Three Type 3 Barricades will be reinstalled at both bridge ends.

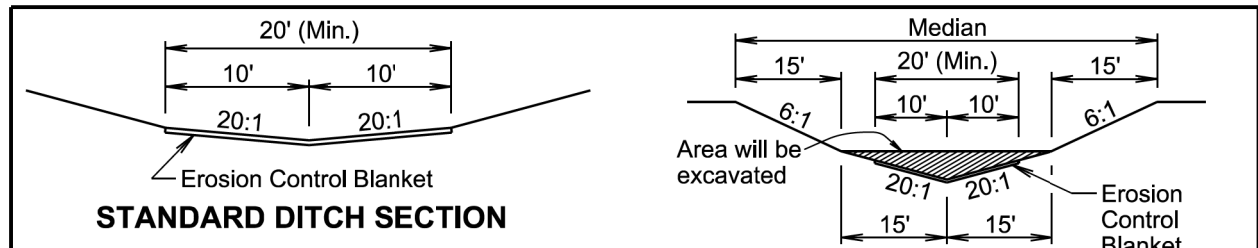
Three Type 3 Barricades will be installed 550' North of the Bridge

Concrete Barriers will be reinstalled behind the Type 3 Barricades.

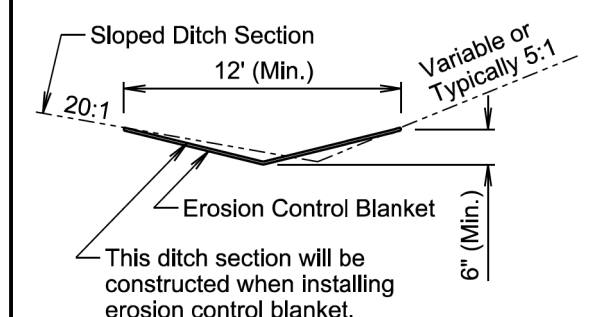


NOT TO SCALE

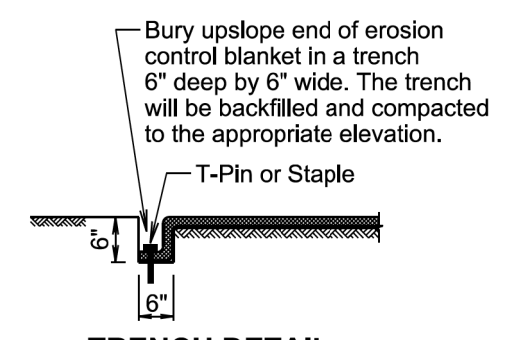
File - ...Design\Note Template.dgn



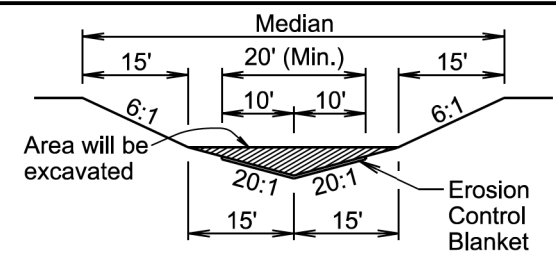
STANDARD DITCH SECTION



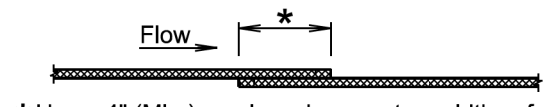
SLOPED DITCH SECTION



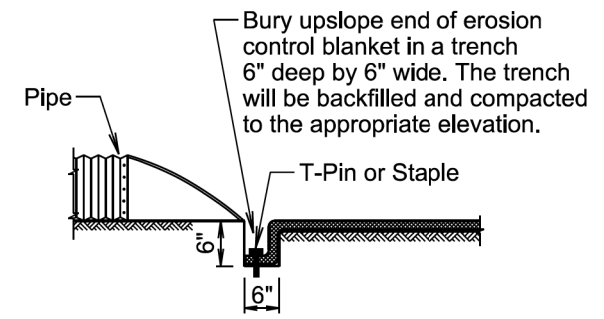
TRENCH DETAIL



MEDIAN SECTION



OVERLAP DETAIL



PIPE END DETAIL

- * Use a 4" (Min.) overlap wherever two widths of erosion control blanket are applied side by side.
- * Use a 6" (Min.) overlap wherever one roll of erosion control blanket ends and another begins.

The median will be shaped to the limits shown in this detail where the erosion control blanket will be placed.

GENERAL NOTES:

Prior to placement of the erosion control blanket, the areas will be properly prepared, shaped, seeded, and fertilized.

Erosion control blanket will be unrolled in the direction of the flow of water when placed in ditches and on slopes. The upslope end of the erosion control blanket will be buried in a trench 6" wide by 6" deep. There will be at least a 6" overlap wherever one roll of erosion control blanket ends and another begins, with the upslope erosion control blanket placed on top of the downslope erosion control blanket.

The erosion control blanket will be pinned to the ground according to the manufacturer's installation recommendations.

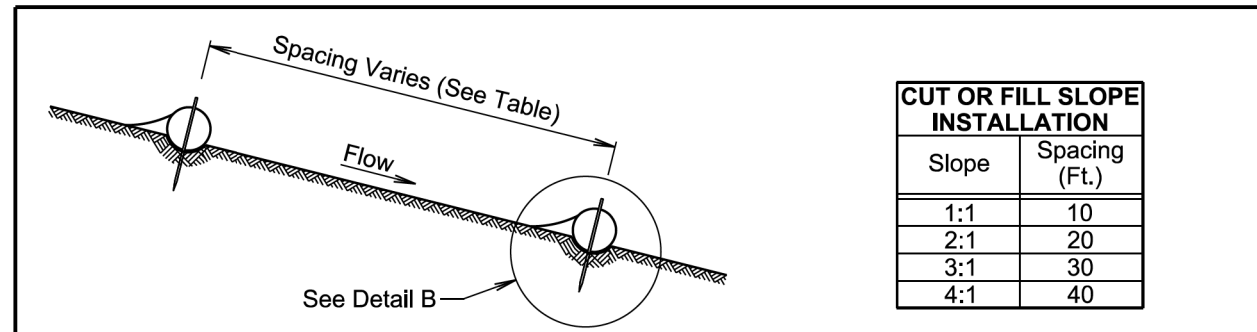
After the placement of the erosion control blanket, the Contractor will fine grade along all edges of the blanket to maintain a uniform slope adjacent to the blanket and level any low spots which might prevent uniform and unrestricted flow of side drainage directly onto the erosion control blanket.

All ditch sections will be shaped when installing the erosion control blanket. All costs for shaping the ditches will be incidental to the contract unit price per foot for "Shaping for Erosion Control Blanket".

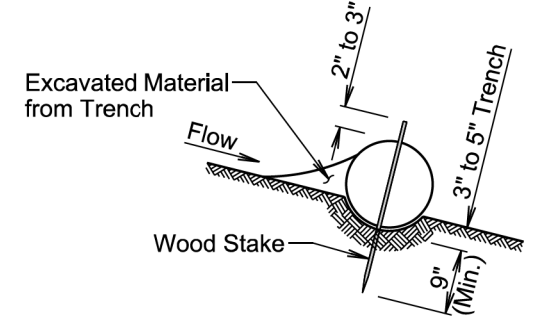
February 14, 2020

S D D O T	EROSION CONTROL BLANKET	PLATE NUMBER 734.01
		Sheet 1 of 1

Published Date: 1st Qtr. 2023

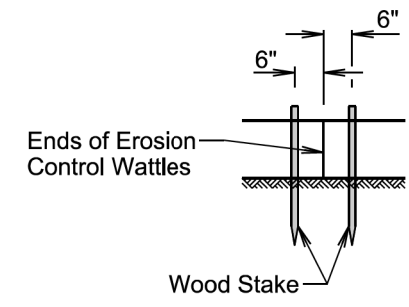


ELEVATION VIEW
(Cut or Fill Slope Installation)

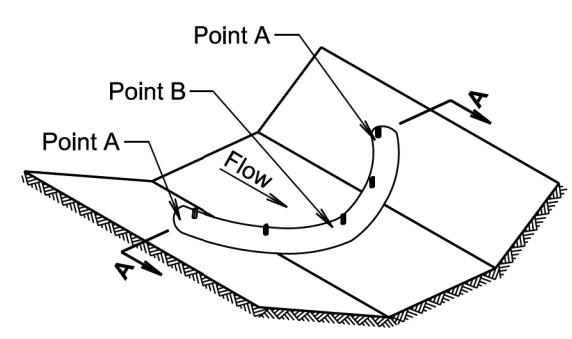


DETAIL B
(Typical of All Installations)

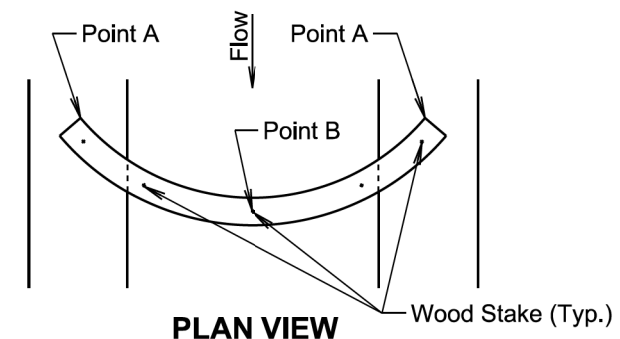
CUT OR FILL SLOPE INSTALLATION	
Slope	Spacing (Ft.)
1:1	10
2:1	20
3:1	30
4:1	40



DETAIL C
(See General Notes)

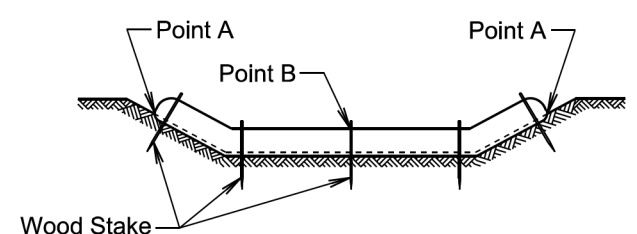


ISOMETRIC VIEW
(Ditch Installation)



PLAN VIEW
(Ditch Installation)

DITCH INSTALLATION	
Grade	Spacing (Ft.)
2%	150
3%	100
4%	75
5%	50



SECTION A-A

February 14, 2020

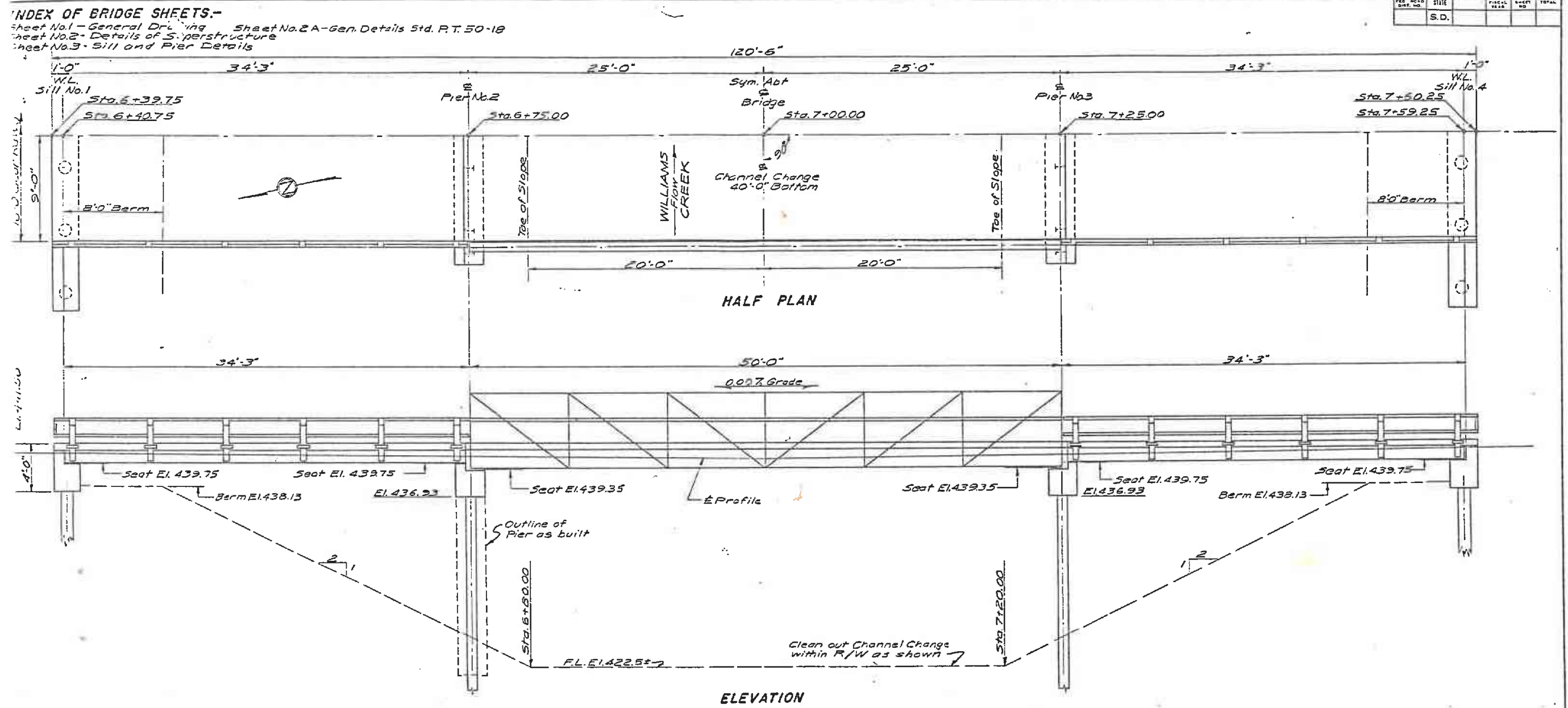
S D D O T	EROSION CONTROL WATTLE	PLATE NUMBER 734.06
		Sheet 1 of 2

Published Date: 1st Qtr. 2023

ORIGINAL CONSTRUCTION PLANS FOR INFORMATION ONLY

STATE OF SOUTH DAKOTA	PROJECT 053-391	SHEET 7	TOTAL SHEETS 10
-----------------------	--------------------	------------	--------------------

Plotting Date: 02/16/2023



Plot Scale - 1:200

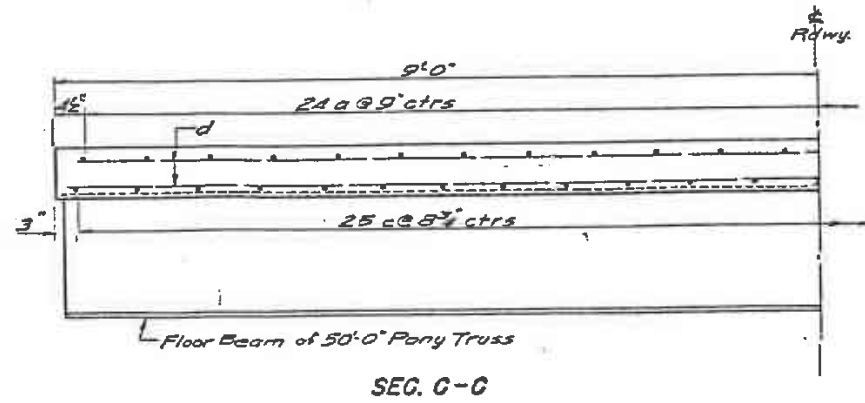
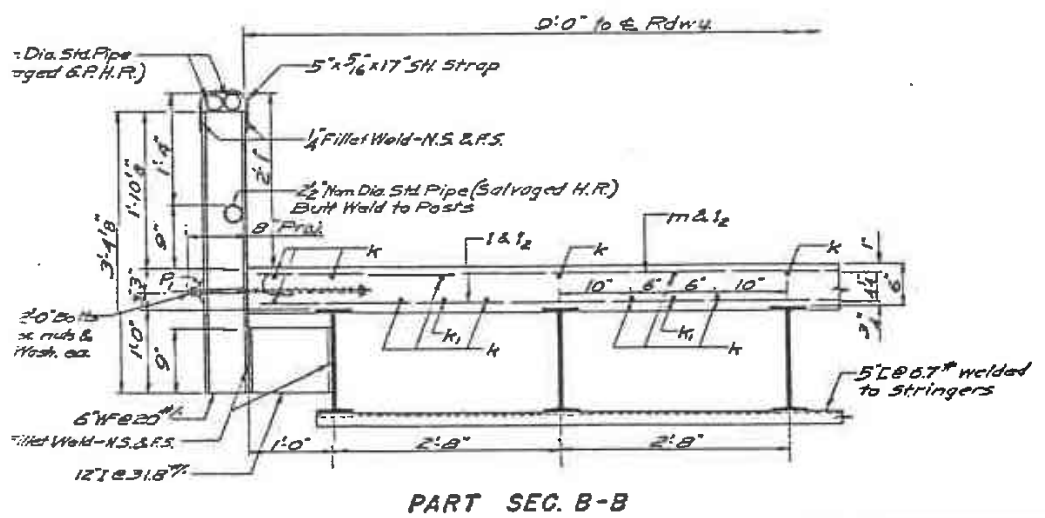
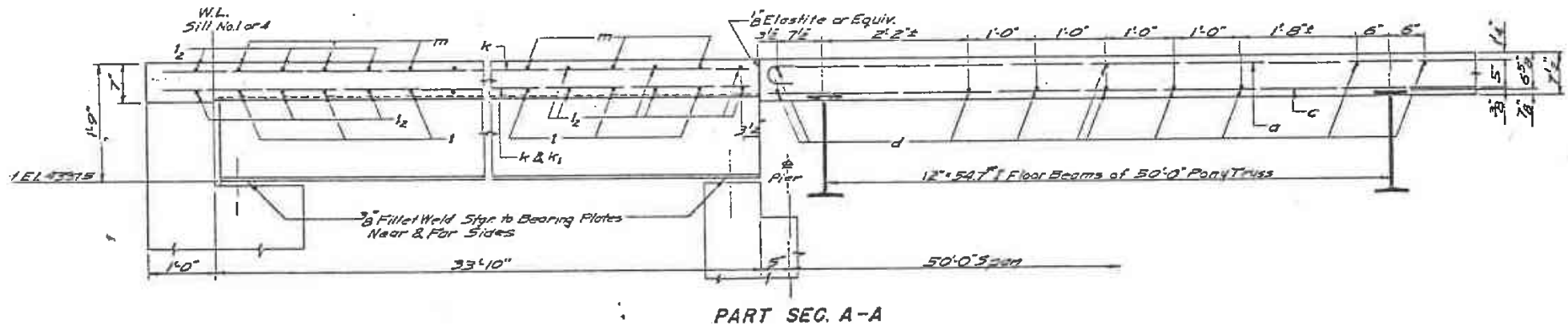
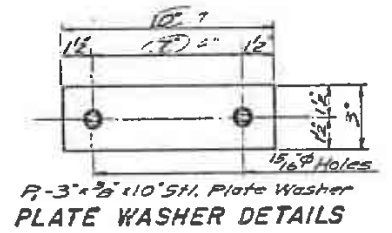
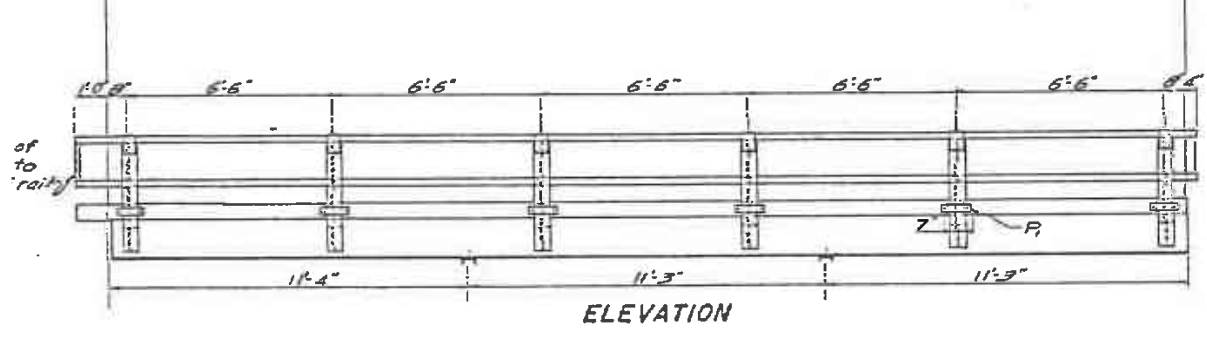
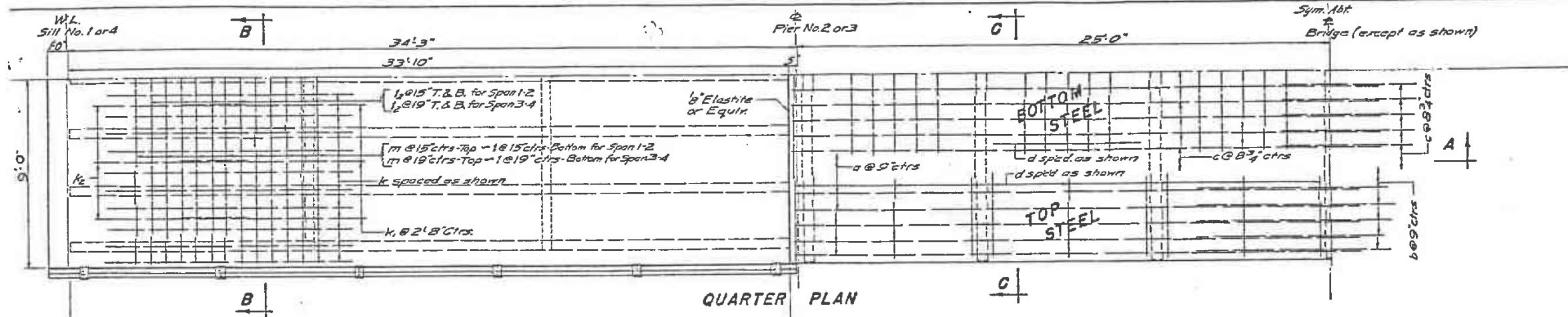
Plotted From - TRW111N126

File - ...DesignNote Template.dgn

ORIGINAL CONSTRUCTION PLANS FOR INFORMATION ONLY

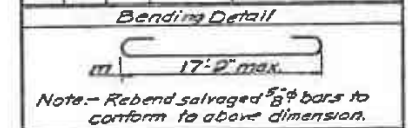
Plotting Date: 02/16/2023

FEED NO.	DATE	BY	SCALE	TOTAL SHEETS



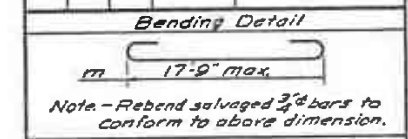
REINF. SCHEDULE - SPAN 1-2

Mk	No.	Size	Length	Remarks
k	20	3/8"	34'6"	Straight
k1	6	3/8"	29'3"	Straight
k2	6	3/8"	9'0"	Lapped Ext. for k1
m	27	3/8"	19'0"	Hooks each end
l	27	3/8"	17'9"	Slight (make 2 from odd)
l2	56	3/8"	17'9"	Straight



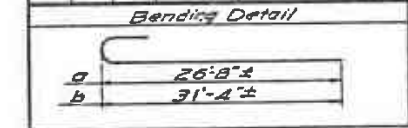
REINF. SCHEDULE - SPAN 3-4

Mk	No.	Size	Length	Remarks
k	29	3/8"	34'6"	Straight
k1	6	3/8"	29'3"	Straight
k2	6	3/8"	9'0"	Lapped Ext. for k1
m	22	3/8"	19'3"	Hooks each end
l	22	3/8"	17'0"	Slight (make 4 from odds)
l2	44	3/8"	17'9"	Straight



REINF. SCHEDULE - SPAN 2-3

Mk	No.	Size	Length	Remarks
a	24	3/8"	27'6"	Hook one end
b	24	3/8"	32'4"	Hook one end
c	50	3/8"	27'6"	Straight
d	50	3/8"	17'9"	Straight



**DETAILS OF SUPERSTRUCTURE
FOR
120'-6" BRIDGE
18'-0" ROADWAY
OVER WILLIAMS CREEK SEC. 16 - T103N-R79W
STA. 6+39.75 TO 7+60.25 SAP 137
LYMAN COUNTY (MAINT.)
SOUTH DAKOTA
STATE HIGHWAY COMMISSION
NOV. 1946**

DESIGNED BY	DRAWN BY <i>D.M.H.</i>	CHECKED BY	APPROVED <i>R. Johnson</i> BRIDGE ENGINEER
-------------	---------------------------	------------	--

43335

Plot Scale - 1:200

Plotted From - TRW11N126

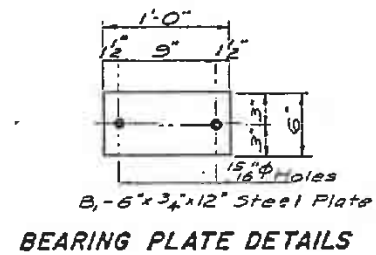
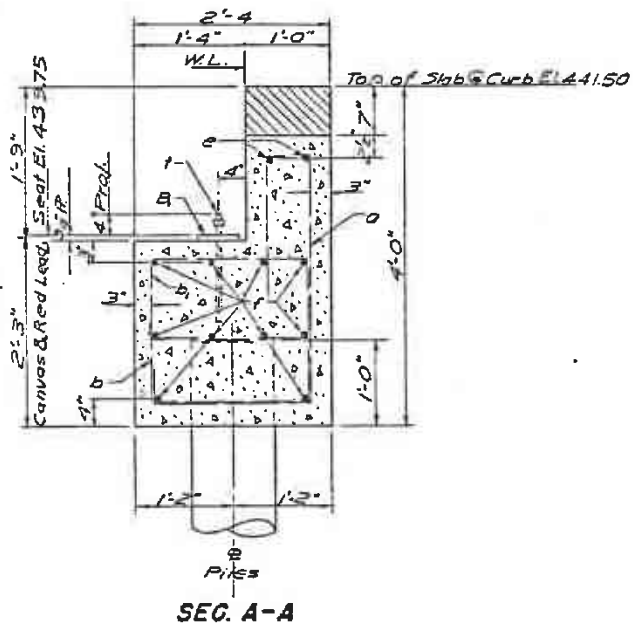
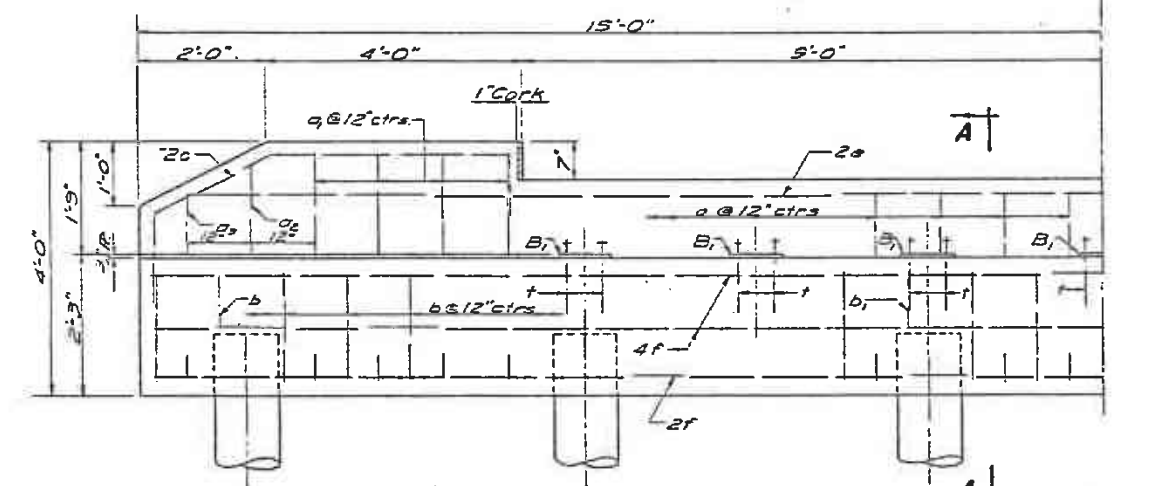
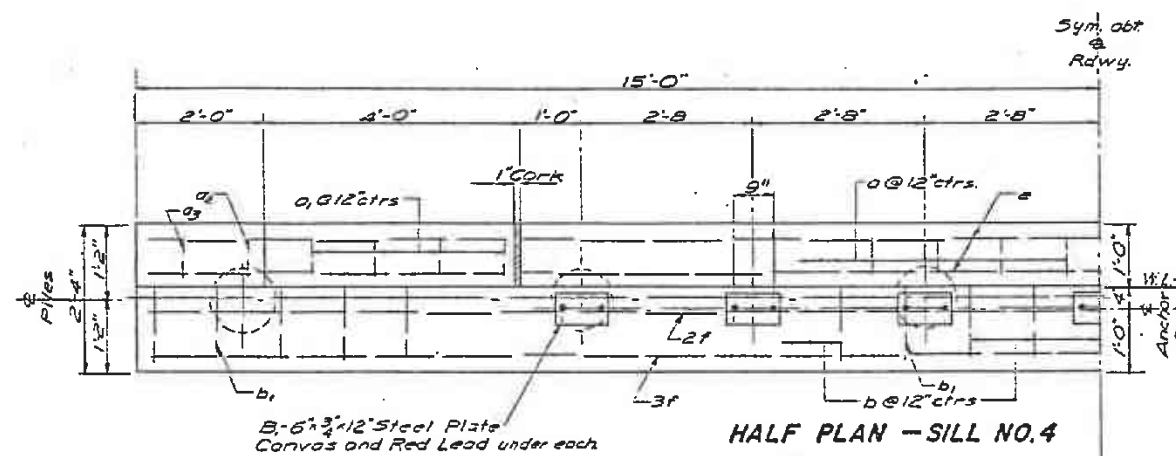
File - ...DesignNote Template.dgn

ORIGINAL CONSTRUCTION PLANS FOR INFORMATION ONLY

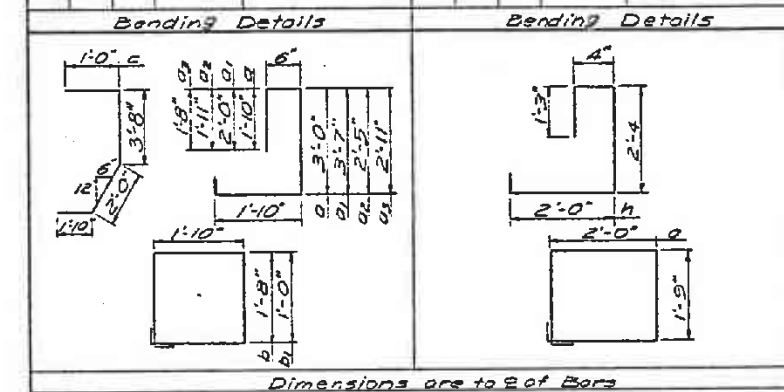
STATE OF SOUTH DAKOTA	PROJECT 053-391	SHEET 9	TOTAL SHEETS 10
-----------------------	--------------------	------------	--------------------

Plotting Date: 02/16/2023

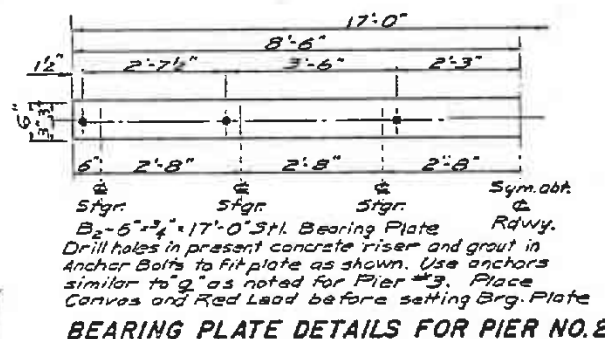
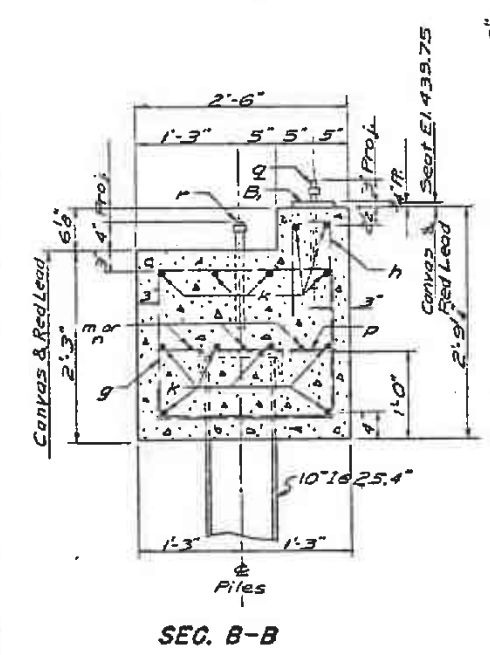
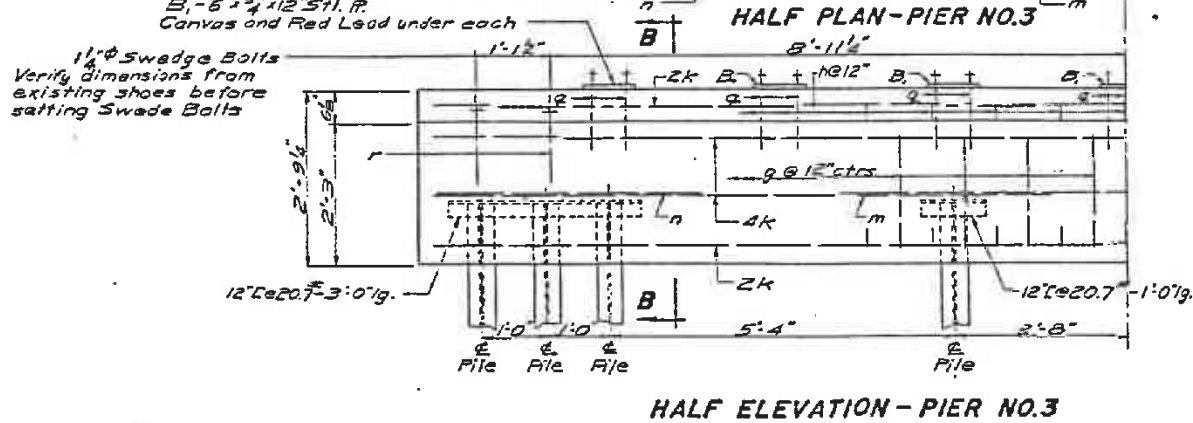
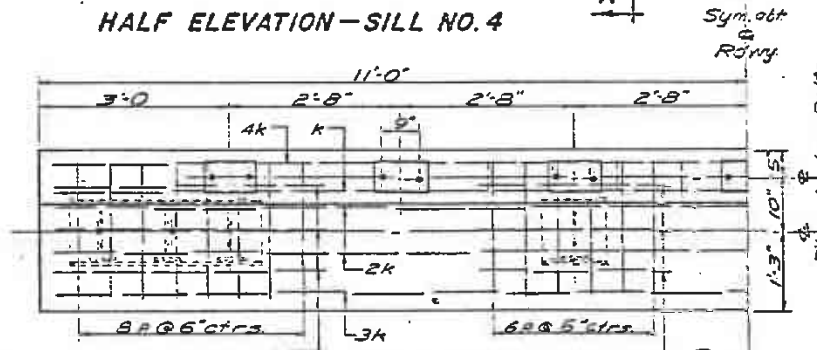
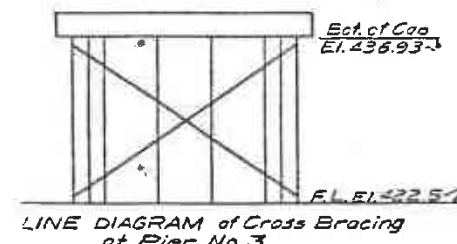
NO.	DATE	BY	REVISION	TOTAL



ROD LIST - SILL NO. 4				ROD LIST - PIER NO. 3			
Mk. No.	Size	Length	Remarks	Mk. No.	Size	Length	Remarks
a	1/2"	7'-6"		g	1/2"	8'-3"	
a ₁	1/2"	8'-3"		h	1/2"	6'-3"	
a ₂	1/2"	7'-0"		k	1/2"	21'-5"	
a ₃	1/2"	7'-3"		m	1/2"	3'-0"	
b	25/32"	7'-9"		n	1/2"	4'-3"	
b ₁	1/2"	6'-3"		p	1/2"	2'-0"	
c	1/2"	8'-6"		q	1/2"	1'-3"	Swedge Bolts
d	3/8"	28'-6"		r	1/2"	1'-3"	Swedge Bolts
f	10/32"	29'-6"					
t	1/4"	1'-3"	Swedge Bolts				



NOTES.-
 All exposed edges shall be chamfered one inch.
 Top of backwall of sill shall have a trowled finish & nosed or chamfered edges.
 All seats for Bearing Plates shall have trowled finishes.

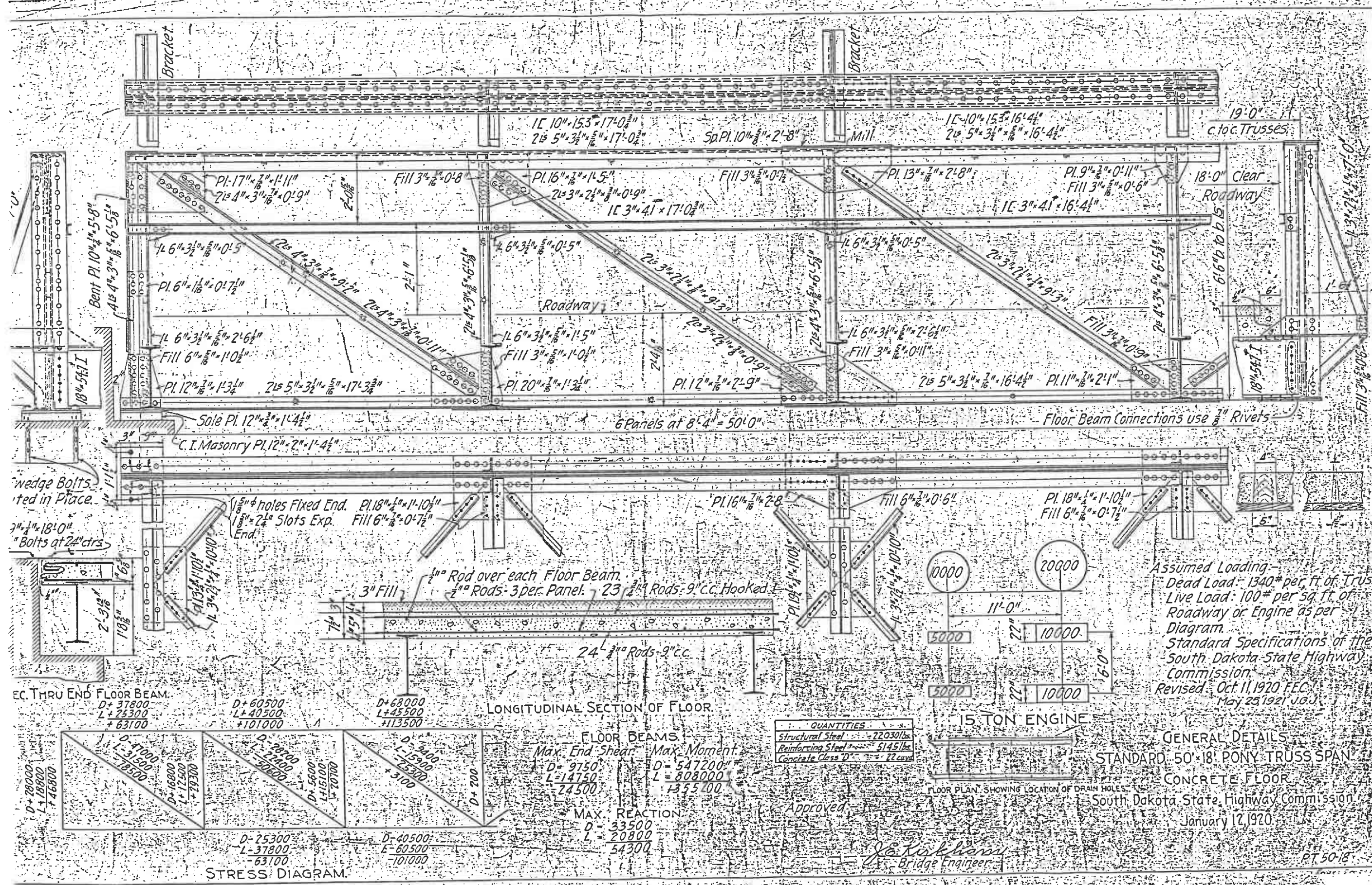


SILL AND PIER DETAILS FOR 120'-6" BRIDGE
 18'-0" ROADWAY
 OVER WILLIAMS CREEK SEG. 16-T103N-R75W
 STA. 6+39.75 TO 7+60.25 SAP 137 (MAINT.)
 LYMAN COUNTY
 SOUTH DAKOTA
 STATE HIGHWAY COMMISSION
 NOV. 1946 3 of 3

DESIGNED BY	DRAWN BY	CHECKED BY	APPROVED BY

ORIGINAL CONSTRUCTION PLANS FOR INFORMATION ONLY

Plotting Date: 02/16/2023



Plot Scale: 1/2" = 1'-0"

Plotted From: TRWIN128

File: ...DesignNote Template.dgn