

Department of Transportation

Rapid City Region Office

2300 Eglin Street

P.O. Box 1970

Rapid City, SD 57709-1970

Phone: 605/394-2244

FAX: 605/394-1904

March 21, 2022

ADDENDUM NO. 1

RE: March 24, 2022 Rapid City Region Office Informal Letting
385-451, 016EB-452 & 090W-452, Jackson, Lawrence & Pennington County
PCN i6m0, i6lx & i6ly
Erosion Control at various locations

TO WHOM IT MAY CONCERN:

The following addenda to the plans shall be inserted and made part of your proposal for the referenced project.

PROPOSAL:

- Revised DOT-123

PLANS:

- Replace Sheets 2,5,8 and 9 with the attached. The width for Turf Reinforcement Mat was changed to 8'. Revised quantity of Type 1 Turf Reinforcement Mat is now 86 sqyds.

Sincerely,

John Rehorst
Region Design Engineer

**SOUTH DAKOTA DEPARTMENT OF TRANSPORTATION
CONTRACT PROPOSAL**

DOT-123
March 2017
1 of 4

CODE	PROJECT			MAINT UNIT	CONTROL REFERENCE	AFE	FUNCTION	BEGIN MRM	END MRM
	PRE	ROUTE	AGR						
		385		451		i6m0	2290	1170	1170
		016EB		452		i6lx	2290	0642	0657
		090W		452		i6ly	2290	1256	1256

CITY AND/OR COUNTY: Jackson, Lawrence & Pennington

BUDGET SOURCE: FY 22 Cont. Maint.

REGION MATERIALS CERTIFICATION REQUIRED: ☒ YES ☐ NO

WIP#: _____

CERTIFIED INSPECTORS/TESTERS REQUIRED: ☒ YES ☐ NO

TO BE INSTALLED ON CM&P: ☒ YES ☐ NO

TYPE, PURPOSE AND LOCATION OF WORK: Erosion Control at various locations

ESTIMATE OF QUANTITIES AND COST

BID ITEM NUMBER	ITEM	QUANTITY	UNIT	UNIT PRICE	AMOUNT
	016EB-452, i6lx				
009E0010	Mobilization	Lump Sum	LS	Lump Sum	
110E7152	Remove Delineator for Reset	2	Each		
120E0010	Unclassified Excavation	50	CuYd		
230E0100	Remove and Replace Topsoil	Lump Sum	LS	Lump Sum	
632E2100	Reset Delineator	2	Each		
634E0110	Traffic Control Signs	126	SqFt		
634E0120	Traffic Control, Miscellaneous	Lump Sum	LS	Lump Sum	
634E0420	Type C Advance Warning Arrow Board	1	Each		
700E0310	Class C Riprap	470	Ton		
734E0010	Erosion Control	Lump Sum	LS	Lump Sum	
734E0131	Type 1 Turf Reinforcement Mat	86	SqYd		
831E0110	Type B Drainage Fabric	530	SqYd		
900E5147	Articulated Concrete Mattress	43	SqYd		
	090W-452, i6ly				
009E0010	Mobilization	Lump Sum	LS	Lump Sum	
110E0600	Remove Fence	120	Ft		
110E1700	Remove Silt Fence	140	Ft		
120E0010	Unclassified Excavation	45	CuYd		
230E0100	Remove and Replace Topsoil	Lump Sum	LS	Lump Sum	
620E0020	Type 2 Right-of-Way Fence	120	Ft		
634E0110	Traffic Control Signs	48	SqFt		
634E0120	Traffic Control, Miscellaneous	Lump Sum	LS	Lump Sum	
700E0310	Class C Riprap	150	Ton		
734E0010	Erosion Control	Lump Sum	LS	Lump Sum	
734E0602	Low Flow Silt Fence	140	Ft		
831E0110	Type B Drainage Fabric	90	SqYd		
	385-451, i6m0				
009E0010	Mobilization	Lump Sum	LS	Lump Sum	
634E0010	Flagging	40	Hour	\$30.37	\$1,214.80
634E0110	Traffic Control Signs	63	SqFt		
634E0120	Traffic Control, Miscellaneous	Lump Sum	LS	Lump Sum	
700E0310	Class C Riprap	17	Ton		
734E0010	Erosion Control	Lump Sum	LS	Lump Sum	
831E0110	Type B Drainage Fabric	8	SqYd		
TOTAL					

DOT-123
March 2017
2 of 4

CODE	PROJECT			MAINT UNIT	CONTROL REFERENCE	AFE	FUNCTION	BEGIN MRM	END MRM
	PRE	ROUTE	AGR						
		385		451		i6m0	2290	1170	1170
		016EB		452		i6lx	2290	0642	0657
		090W		452		i6ly	2290	1256	1256

CONTRACTOR'S PROPOSAL STATEMENT

The undersigned agrees to offer the labor and material in the quantities, at the unit price, for the purpose, in the place, and in accordance with attached provisions. The Contractor will provide services in compliance with the Americans with Disabilities Act of 1990 and any amendments.

SUBSTANTIAL COMPLETION DATE **N/A**

FIELD WORK COMPLETION DATE Nov. 18, 2022

SUBSCRIBED AND SWORN TO BEFORE ME THE

DAY OF _____, 20____

NOTARY

My Commission Expires:

PROPOSED START DATE

SIGNATURE

PRINTED NAME _____

COMPANY

STR. ADDRESS

CITY, STATE, ZIP

PHONE NUMBER

DATE (SEAL) FEDERAL TAX ID NUMBER

TO BE FILLED OUT BY STATE PERSONNEL:

The parties agree that the Department of Transportation may execute this contract by electronic signature.

RECOMMENDED FOR APPROVAL:

CONSTRUCTION & MAINTENANCE ENGINEER _____ DATE _____

AREA / REGION / OPS ENGINEER _____ DATE _____

DIRECTOR OF OPERATIONS _____ **DATE** _____

INTERNAL SERVICES / AUDITS	DATE
----------------------------	------

ACCEPTED BY SOUTH DAKOTA DEPARTMENT OF TRANSPORTATION

NAME	TITLE	DATE
------	-------	------

IF FEDERAL FUNDS WILL BE EXPENDED UNDER THIS AGREEMENT, ACCEPTANCE BY PROJECT DEVELOPMENT IS REQUIRED

PROJECT DEVELOPMENT ENGINEER	DATE
-------------------------------------	-------------

ESTIMATE OF QUANTITIES

PCN: i6Lx (016EB-452)

BID ITEM NUMBER	ITEM	QUANTITY	UNIT
009E0010	Mobilization	Lump Sum	LS
110E7152	Remove Delineator for Reset	2	Each
120E0010	Unclassified Excavation	50	CuYd
230E0100	Remove and Replace Topsoil	Lump Sum	LS
632E2100	Reset Delineator	2	Each
634E0110	Traffic Control Signs	126.0	SqFt
634E0120	Traffic Control, Miscellaneous	Lump Sum	LS
634E0420	Type C Advance Warning Arrow Board	1	Each
700E0310	Class C Riprap	470.0	Ton
734E0010	Erosion Control	Lump Sum	LS
734E0131	Type 1 Turf Reinforcement Mat	86.0	SqYd
831E0110	Type B Drainage Fabric	530	SqYd
900E5147	Articulated Concrete Mattress	43.0	SqYd

PCN: i6Ly (090W-452)

BID ITEM NUMBER	ITEM	QUANTITY	UNIT
009E0010	Mobilization	Lump Sum	LS
110E0600	Remove Fence	120	Ft
110E1700	Remove Silt Fence	140	Ft
120E0010	Unclassified Excavation	45	CuYd
230E0100	Remove and Replace Topsoil	Lump Sum	LS
620E0020	Type 2 Right-of-Way Fence	120	Ft
634E0110	Traffic Control Signs	48.0	SqFt
634E0120	Traffic Control, Miscellaneous	Lump Sum	LS
700E0310	Class C Riprap	150.0	Ton
734E0010	Erosion Control	Lump Sum	LS
734E0602	Low Flow Silt Fence	140	Ft
831E0110	Type B Drainage Fabric	90	SqYd

PCN: i6m0 (385-451)

BID ITEM NUMBER	ITEM	QUANTITY	UNIT
009E0010	Mobilization	Lump Sum	LS
634E0010	Flagging	40.0	Hour
634E0110	Traffic Control Signs	63.0	SqFt
634E0120	Traffic Control, Miscellaneous	Lump Sum	LS
700E0310	Class C Riprap	17.0	Ton
734E0010	Erosion Control	Lump Sum	LS
831E0110	Type B Drainage Fabric	8	SqYd

SPECIFICATIONS

Standard Specifications for Roads and Bridges, 2015 Edition and Required Provisions, Supplemental Specifications, and Special Provisions as included in the Proposal.

ENVIRONMENTAL COMMITMENTS

The SDDOT is committed to protecting the environment and uses Environmental Commitments as a communication tool for the Engineer and Contractor to ensure that attention is given to avoid, minimize, and/or mitigate an environmental impact. Environmental commitments to various agencies and the public have been made to secure approval of this project. An agency with permitting authority can delay a project if identified environmental impacts have not been adequately addressed. Unless otherwise designated, the Contractor's primary contact regarding matters associated with these commitments will be the Project Engineer. During construction, the Project Engineer will verify that the Contractor has met Environmental Commitment requirements. These environmental commitments are not subject to change without prior written approval from the SDDOT Environmental Office.

Additional guidance on SDDOT's Environmental Commitments can be accessed through the Environmental Procedures Manual found at: <https://dot.sd.gov/media/documents/EnvironmentalProceduresManual.pdf>

For questions regarding change orders in the field that may have an effect on an Environmental Commitment, the Project Engineer will contact the Environmental Engineer at 605-773-3180 or 605-773-4336 to determine whether an environmental analysis and/or resource agency coordination is necessary.

Once construction is complete, the Project Engineer will review all environmental commitments for the project and document their completion.

COMMITMENT C: WATER SOURCE

The Contractor will not withdraw water with equipment previously used outside the State of South Dakota or previously used in aquatic invasive species (AIS) positive waters within South Dakota without prior approval from the SDDOT Environmental Office. To prevent and control the introduction and spread of invasive species into the project vicinity, all equipment will be power washed with hot water (≥140 °F) and completely dried for a minimum of 7 days prior to subsequent use. South Dakota administrative rule 41:10:04:02 forbids the possession and transport of AIS; therefore, all attached dirt, mud, debris and vegetation must be removed and all compartments and tanks capable of holding standing water must be drained. This includes, but is not limited to, all equipment, pumps, lines, hoses and holding tanks.

Action Taken/Required:

The Contractor will obtain the necessary permits from the regulatory agencies such as the South Dakota Department of Environment and Natural Resources (DENR) and the United States Army Corps of Engineers (USACE) prior to water extraction activities.

Additional information and mapping of water sources impacted by Aquatic Invasive Species in South Dakota can be accessed at: <http://sdleastwanted.com/maps/default.aspx>

South Dakota Administrative Rule 41:10:04 Aquatic Invasive Species: <https://sdlegislature.gov/rules/DisplayRule.aspx?Rule=41:10:04>

COMMITMENT E: STORM WATER

Construction activities constitute less than 1 acre of disturbance.

Action Taken/Required:

At a minimum and regardless of project size, appropriate erosion and sediment control measures must be installed to control the discharge of pollutants from the construction site.

TABLE OF RIPRAP AND DRAINAGE FABRIC

Class C riprap and Type B Drainage Fabric will be used according to Section 700. The excavated material for riprap placement will be used to fill the nearby eroded areas. The excess material not required to fill nearby eroded areas will be hauled off as waste. Riprap and Drainage Fabric will be installed at the locations shown in the tables below:

PCN: i6Lx

Station	Location	Class C Riprap (Ton)	Type B Drainage Fabric (SqYd)
016E B-452 MRM 65.7	Channel Bed	470	530

PCN: i6Ly

Station	Location	Class C Riprap (Ton)	Type B Drainage Fabric (SqYd)
I90 MRM 125.6	E. Edge of Creek	150	90

PCN: i6m0

Station	Location	Class C Riprap (Ton)	Type B Drainage Fabric (SqYd)
385 MRM 117	Culvert Inlet	17	8

TURF REINFORCEMENT MAT

Turf Reinforcement Mat will be installed on both sides of the Articulated Concrete Mattress at locations shown in the table at the widths specified, and at locations determined by the Engineer during construction. The Contractor will use a turf reinforcement mat from the approved products list. The approved product list for turf reinforcement mat may be viewed at the following internet site:

<http://apps.sd.gov/HC60ApprovedProducts/main.aspx>

Turf Reinforcement Mat will be installed in accordance with the manufacturer's installation instructions.

TABLE OF TURF REINFORCEMENT MAT

PCN: i6Lx

Station	Location	L/R	Width (Ft)	Type	Quantity (SqYd)
016E B-452 MRM 64.7	Ditch	L	8	1	18
016E B-452 MRM 64.7	Ditch	R	8	1	18
016E B-452 MRM 64.2	Ditch	L	8	1	25
016E B-452 MRM 64.2	Ditch	R	8	1	25
Total:					86

ARTICULATED CONCRETE MATTRESS

Articulated concrete mattress will be installed at locations as noted in the plans and at locations determined by the Engineer during construction.

Installation of the articulated concrete mattress will be in accordance with the manufacturer's installation instructions.

All cost for furnishing and installing the articulated concrete mattress including hauling, materials, equipment, labor, necessary excavation, and incidentals necessary will be paid for at the contract unit price per square yard for "Articulated Concrete Mattress".

The articulated concrete mattress will be as shown below or an approved equal:

Product	Manufacturer
Flexamat	Motz Enterprises, Inc. Cincinnati, OH Phone: 1-513-772-6689 http://www.flexamat.com/

TABLE OF ARTICULATED CONCRETE MATTRESS

PCN: i6Lx

Station	Width (Ft)	Location	Quantity (SqYd)
016E B-452 MRM 64.7	8	Edge of Ditch	18
016E B-452 MRM 64.2	8	Edge of Ditch	25
Total:			43

REMOVE FENCE

The Contractor will remove the existing right-of-way fence that is to be replaced as designated in the plans and/or as ordered by the Engineer. This includes all fencing, posts, brace panels, tubular gates or anything pertaining to the existing fence. Upon removal all items will become property of contractor.

The Contractor will replace the fence through the creek bed as Fencing at Wide Depression, refer to Standard Plate 620.10.

The Contractor may remove up to 40 feet of fence leading to the bridge abutment, on both sides of the creek, to allow for movement of equipment into the work zone.

Limited Access Security - All barbed wire fence removed during any one working day is to be replaced during the same day. Contractor is responsible for any and all livestock encountered anywhere along the fence being replaced. Control of livestock during the time that any fence is being replaced is the sole responsibility of the Contractor. All costs of this work and any temporary fencing will be incidental to the contract unit price for the various fence items.

The Contractor will coordinate with landowners to ensure cattle are contained on the landowner's property.

FENCE ALIGNMENT

Where fence is being removed and replaced, fence will be installed on the same alignment as existing. It will be the Contractor's responsibility to preserve the fence alignment.

TYPE 2 RIGHT-OF-WAY FENCE

Contractor will furnish all new treated posts, steel posts and barbed wire in fencing construction. Install alternating wood and steel posts at 16'-6" spacing for Type 2 Right-of-Way Fence.

This project replaces portions of ROW fence along I-90. Segments of I-90 ROW fencing will remain in place.

TABLE OF TYPE 2 RIGHT-OF-WAY FENCE

PCN: i6Ly

Station	Fence Type	Length (Ft)
I90 MRM 125.6	Type 2	105
I90 MRM 125.6	Type 2 Wide Depression	40
Total:		145

LOW FLOW SILT FENCE

The low flow silt fence fabric provided will be from the approved product list. The approved product list for low flow silt fence may be viewed at the following internet site:

<http://apps.sd.gov/HC60ApprovedProducts/main.aspx>

Low flow silt fence will be placed at the locations noted in the table and at locations that will minimize siltation of adjacent streams, lakes, dams, or drainage areas as determined by the Engineer during construction. Silt fence will be used to divert creek away from work activities. Refer to Standard Plate 734.04 for details.

An additional quantity of Low Flow Silt Fence has been added to the Estimate of Quantities for temporary sediment control.

TABLE OF LOW FLOW SILT FENCE

PCN: i6Ly

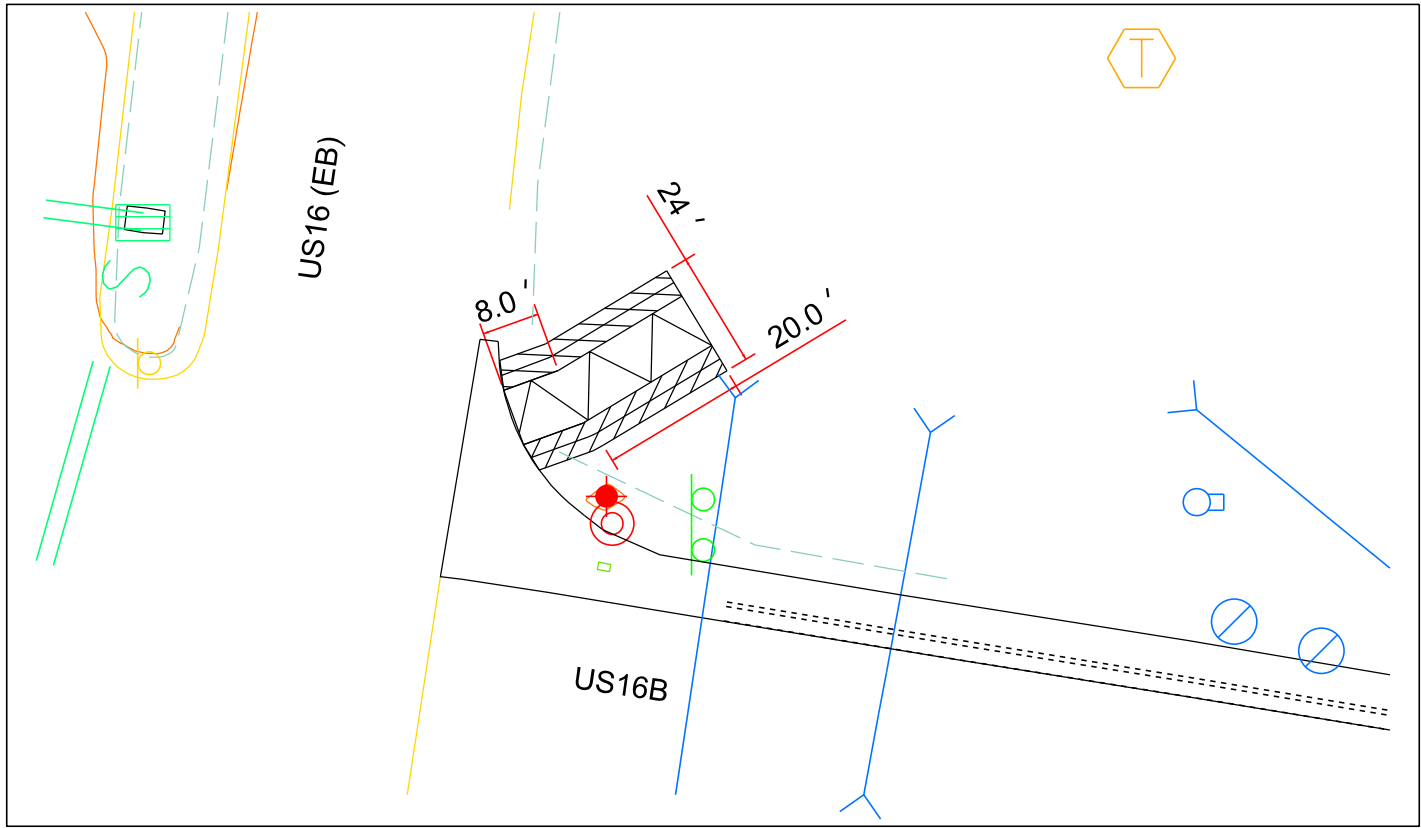
Station	Location	Quantity (Ft)
I90 MRM 125.6	Edge of Creek	70
Additional Quantity:		70
Total:		140

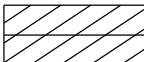
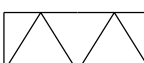
016EB-452 (PCN: i6Lx) MRM 64.2

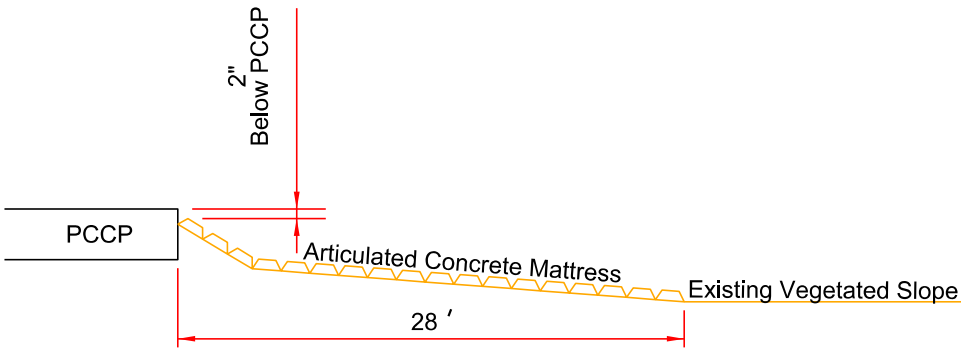
STATE OF SOUTH DAKOTA	PROJECT	SHEET	TOTAL SHEETS
	385-451, 016EB-452, 090W-452	8	24

Plotting Date: 03/21/2022
Revised Date: 3/21/22 jpr

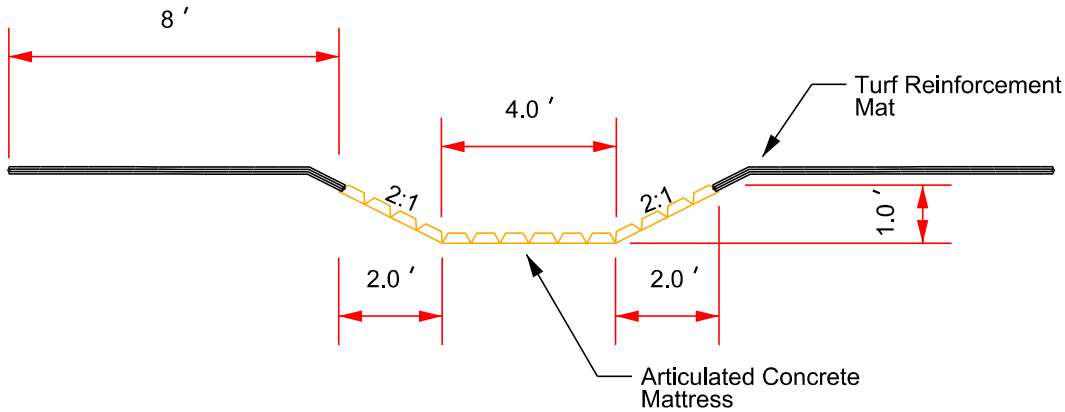
Plan View



-  Turf Reinforcement Mat
-  Articulated Concrete Mattress



Profile View



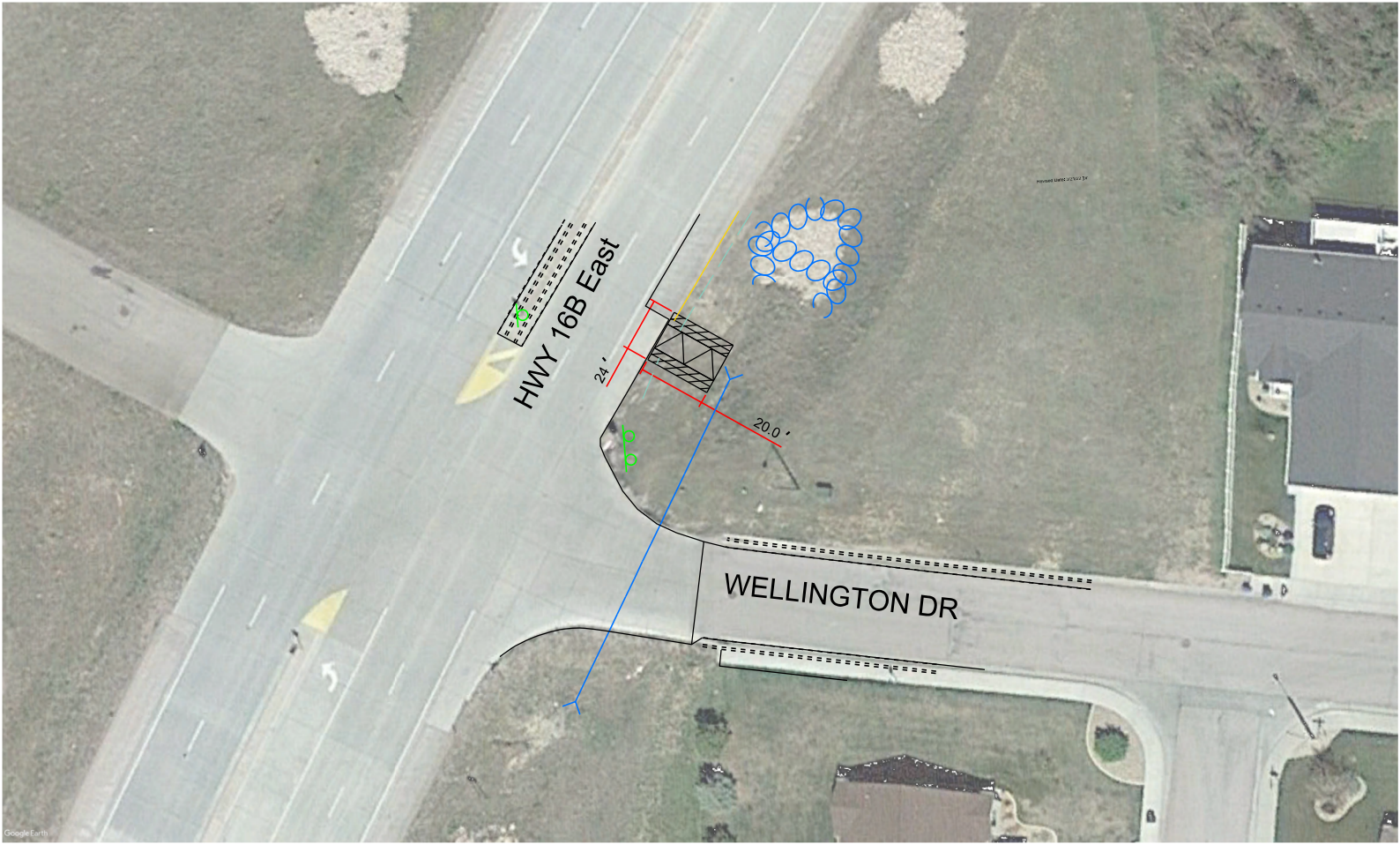
Typical Cross Section

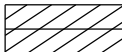
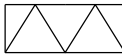
016EB-452 (PCN: i6Lx) MRM 64.7

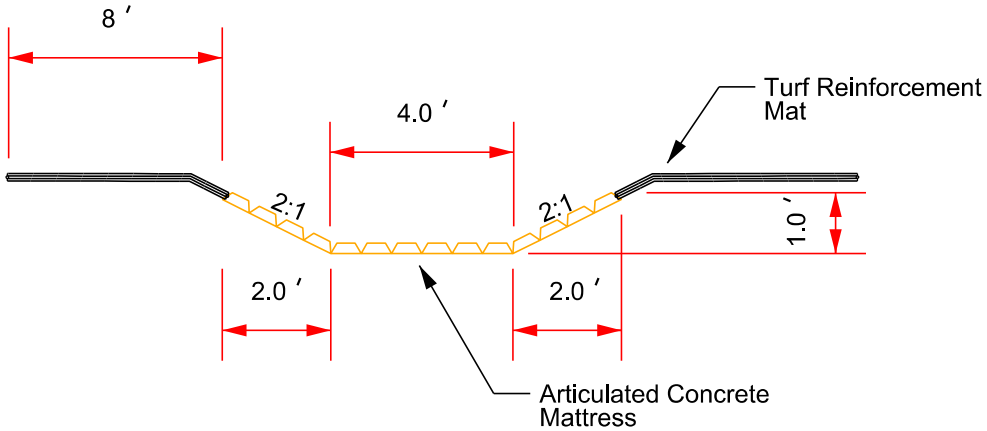
STATE OF SOUTH DAKOTA	PROJECT	SHEET	TOTAL SHEETS
	385-451, 016EB-452, 090W-452	9	24

Plotting Date: 03/21/2022
Revised Date: 3/21/22 jpr

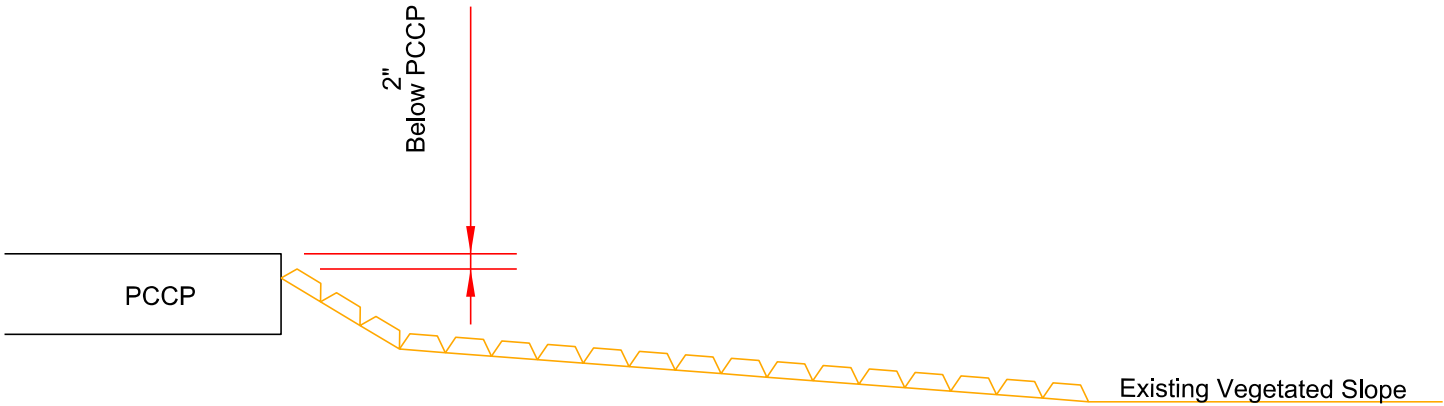
Plan View



-  Turf Reinforcement Mat
-  Articulated Concrete Mattress



Typical Cross Section



Profile View