

Plot Scale - 1:200

Plotted From - TRRC12608

Plotted From -

STATE OF SOUTH DAKOTA  
DEPARTMENT OF TRANSPORTATION  
PLANS FOR PROPOSED

PROJECT 034-451  
SD HIGHWAY 34  
MEADE

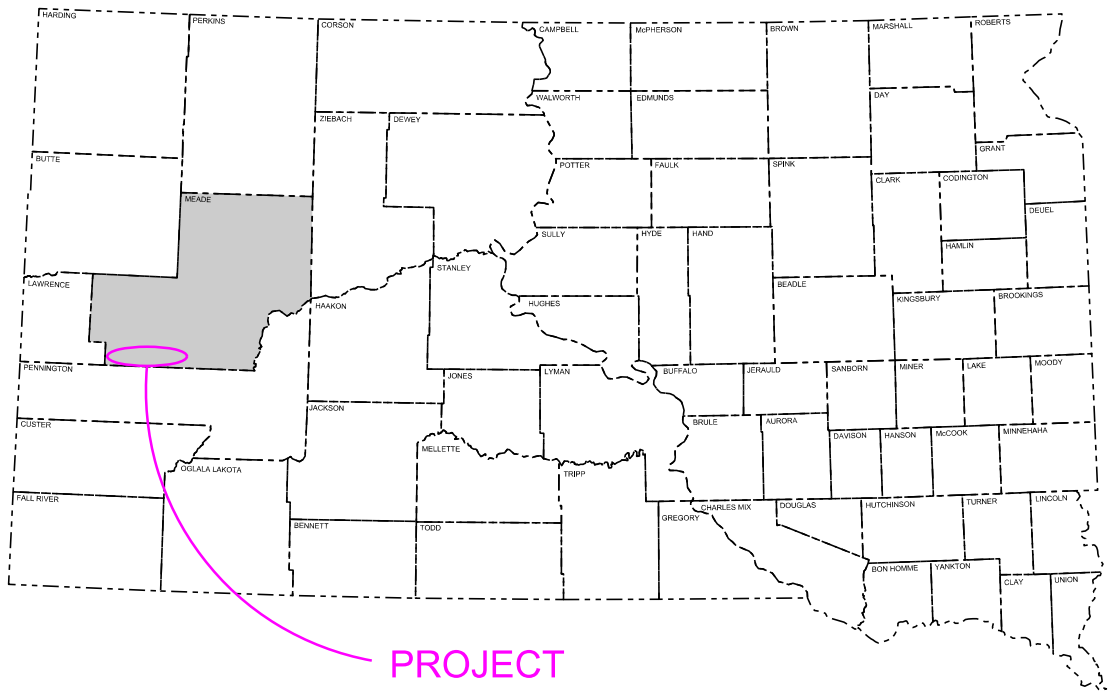
ASPHALT REPAIR  
PCN i71r

STATE OF SOUTH DAKOTA	PROJECT	SHEET	TOTAL SHEETS
	034-451	1	11

Plotting Date: 03/01/2023

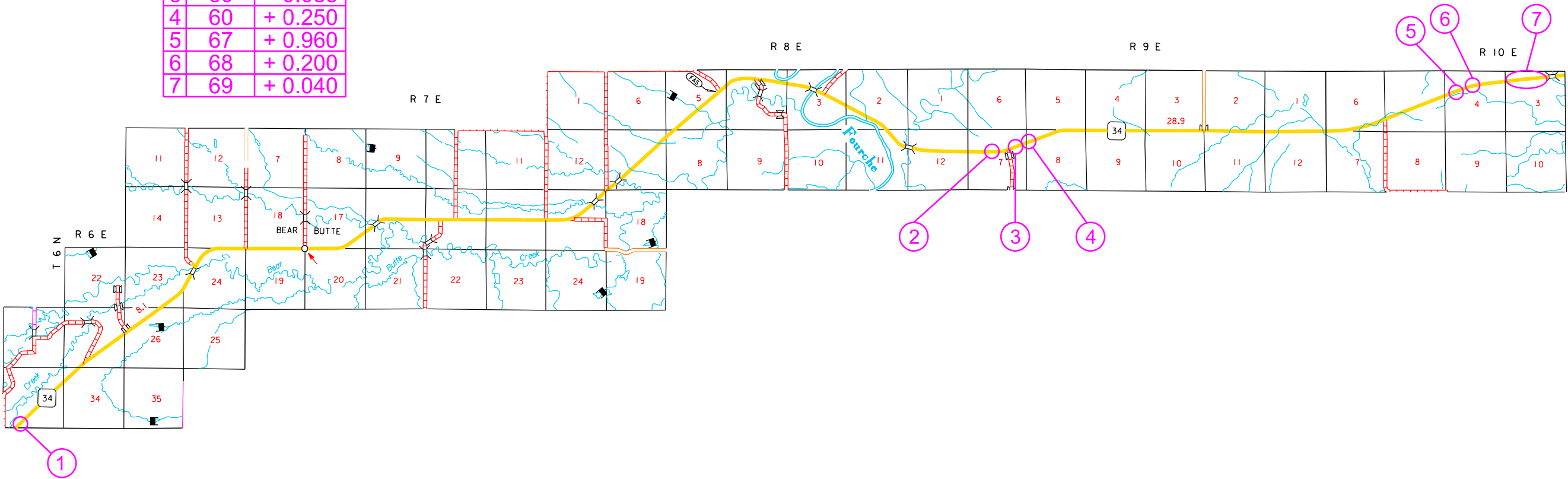
INDEX OF SHEETS

1	General Layout with Index
2-5	Estimate with General Notes & Tables
6-8	Special Details
9-11	Standard Plates



PROJECT

	MRM	Disp
1	40	+ 0.619
2	59	+ 0.656
3	60	+ 0.083
4	60	+ 0.250
5	67	+ 0.960
6	68	+ 0.200
7	69	+ 0.040



DESIGN DESIGNATION

AADT (2021)	867
AADT (2041)	1382
DHV	155
D	50%
DHV T%	6.3%
AADT T%	13.9%
V	65 mph

STORM WATER PERMIT

None Required

ESTIMATE OF QUANTITIES

BID ITEM NUMBER	ITEM	QUANTITY	UNIT
009E0010	Mobilization	Lump Sum	LS
320E1200	Asphalt Concrete Composite	877.6	Ton
332E0010	Cold Milling Asphalt Concrete	7,800	SqYd
633E1220	High Build Waterborne Pavement Marking Paint, 4" White	5,850	Ft
633E1222	High Build Waterborne Pavement Marking Paint, 4" Yellow	4,219	Ft
634E0010	Flagging	600.0	Hour
634E0020	Pilot Car	250.0	Hour
634E0110	Traffic Control Signs	974.8	SqFt
634E0120	Traffic Control, Miscellaneous	Lump Sum	LS
634E0640	Temporary Pavement Marking	10,125	Ft

SPECIFICATIONS

Standard Specifications for Roads and Bridges, 2015 Edition and Required Provisions, Supplemental Specifications, and Special Provisions as included in the Proposal.

ENVIRONMENTAL COMMITMENTS

The SDDOT is committed to protecting the environment and uses Environmental Commitments as a communication tool for the Engineer and Contractor to ensure that attention is given to avoid, minimize, and/or mitigate an environmental impact. Environmental commitments to various agencies and the public have been made to secure approval of this project. An agency with permitting authority can delay a project if identified environmental impacts have not been adequately addressed. Unless otherwise designated, the Contractor’s primary contact regarding matters associated with these commitments will be the Project Engineer. During construction, the Project Engineer will verify that the Contractor has met Environmental Commitment requirements. These environmental commitments are not subject to change without prior written approval from the SDDOT Environmental Office.

Additional guidance on SDDOT’s Environmental Commitments can be accessed through the Environmental Procedures Manual found at: <<https://dot.sd.gov/media/documents/EnvironmentalProceduresManual.pdf> >

For questions regarding change orders in the field that may have an effect on an Environmental Commitment, the Project Engineer will contact the Environmental Engineer at 605-773-3180 or 605-773-4336 to determine whether an environmental analysis and/or resource agency coordination is necessary.

Once construction is complete, the Project Engineer will review all environmental commitments for the project and document their completion.

UTILITIES

The Contractor will contact the involved utility companies through South Dakota One Call (1-800-781-7474) prior to starting work. It will be the responsibility of the Contractor to coordinate work with the utility owners to avoid damage to existing facilities.

If utilities are identified near the improvement area through the SD One Call Process as required by South Dakota Codified Law 49-7A and Administrative Rule Article 20:25, the Contractor will contact the Project Engineer to determine modifications that will be necessary to avoid utility impacts.

COMMITMENT B: FEDERALLY THREATENED, ENDANGERED, AND PROTECTED SPECIES

COMMITMENT B2: WHOOPING CRANE

The Whooping Crane is a spring and fall migratory bird in South Dakota that is about 5 feet tall and typically stops on wetlands, rivers, and agricultural lands along their migration route. An adult Whooping Crane is white with a red crown and a long, dark, pointed bill. Immature Whooping Cranes are cinnamon brown. While in flight, their long necks are kept straight and their long dark legs trail behind. Adult Whooping Cranes' black wing tips are visible during flight.

Action Taken/Required:

Harassment or other measures to cause the Whooping Crane to leave the site is a violation of the Endangered Species Act. If a Whooping Crane is sighted roosting in the vicinity of the project, borrow pits, or staging areas associated with the project, cease construction activities in the affected area until the Whooping Crane departs and immediately contact the Project Engineer. The Project Engineer will contact the Environmental Office so that the sighting can be reported to USFWS.

COMMITMENT C: WATER SOURCE

The Contractor will not withdraw water with equipment previously used outside the State of South Dakota or previously used in aquatic invasive species (AIS) positive waters within South Dakota without prior approval from the SDDOT Environmental Office. To prevent and control the introduction and spread of invasive species into the project vicinity, all equipment will be power washed with hot water (≥140 °F) and completely dried for a minimum of 7 days prior to subsequent use. South Dakota administrative rule 41:10:04:02 forbids the possession and transport of AIS; therefore, all attached dirt, mud, debris and vegetation must be removed and all compartments and tanks capable of holding standing water must be drained. This includes, but is not limited to, all equipment, pumps, lines, hoses and holding tanks.

Action Taken/Required:

The Contractor will obtain the necessary permits from the regulatory agencies such as the South Dakota Department of Agriculture and Natural Resources (DANR) and the United States Army Corps of Engineers (USACE) prior to water extraction activities.

Additional information and mapping of water sources impacted by Aquatic Invasive Species in South Dakota can be accessed at: < <https://sdleastwanted.sd.gov/maps/default.aspx> >

< [South Dakota Administrative Rule 41:10:04 Aquatic Invasive Species: https://sdlegislature.gov/rules/DisplayRule.aspx?Rule=41:10:04](https://sdlegislature.gov/rules/DisplayRule.aspx?Rule=41:10:04) >

COMMITMENT E: STORM WATER

Construction activities constitute less than 1 acre of disturbance.

Action Taken/Required:

At a minimum and regardless of project size, appropriate erosion and sediment control measures must be installed to control the discharge of pollutants from the construction site.

STATE OF SOUTH DAKOTA	PROJECT	SHEET	TOTAL SHEETS
	034-451	2	11

COMMITMENT H: WASTE DISPOSAL SITE

The Contractor will furnish a site(s) for the disposal of construction and/or demolition debris generated by this project.

Action Taken/Required:

Construction and/or demolition debris may not be disposed of within the Public ROW

The waste disposal site(s) will be managed and reclaimed in accordance with the following from the General Permit for Construction/Demolition Debris Disposal Under the South Dakota Waste Management Program issued by the Department of Agriculture and Natural Resources.

The waste disposal site(s) will not be located in a wetland, within 200 feet of surface water, or in an area that adversely affects wildlife, recreation, aesthetic value of an area, or any threatened or endangered species, as approved by the Environmental Office and the Project Engineer.

If the waste disposal site(s) is located such that it is within view of any ROW, the following additional requirements will apply:

1. Construction and/or demolition debris consisting of concrete, asphalt concrete, or other similar materials will be buried in a trench separate from wood debris. The final cover over the construction and/or demolition debris will consist of a minimum of 1 foot of soil capable of supporting vegetation. Waste disposal sites provided outside of the Public ROW will be seeded in accordance with Natural Resources Conservation Service recommendations. The seeding recommendations may be obtained through the appropriate County NRCS Office. The Contractor will control the access to waste disposal sites not within the Public ROW with fences, gates, and placement of a sign or signs at the entrance to the site stating, “No Dumping Allowed”.

2. Concrete and asphalt concrete debris may be stockpiled within view of the ROW for a period not to exceed the duration of the project. Prior to project completion, the waste will be removed from view of the ROW or buried, and the waste disposal site reclaimed as noted above.

The above requirements will not apply to waste disposal sites that are covered by an individual solid waste permit as specified in SDCL 34A-6-58, SDCL 34A-6-1.13, and ARSD 74:27:10:06. Failure to comply with the requirements stated above may result in civil penalties in accordance with South Dakota Solid Waste Law, SDCL 34A-6-1.31.

All costs associated with furnishing waste disposal site(s), disposing of waste, maintaining control of access (fence, gates, and signs), and reclamation of the waste disposal site(s) will be incidental to the various contract items.

COMMITMENT I: HISTORIC PRESERVATION OFFICE CLEARANCES

State Historic Preservation Office (SHPO or THPO) concurrence has not been obtained for this project.

Action Taken/Required:

All earth disturbing activities not designated within the plans require a cultural resource review prior to scheduling the pre-construction meeting. This work includes but is not limited to: Contractor furnished material sources, material processing sites, stockpile sites, storage areas, plant sites, and waste areas.

The Contractor will arrange and pay for a record search and when necessary, a cultural resource survey. The Contractor has the option to contact the state Archaeological Research Center (ARC) at 605-394-1936 or another qualified archaeologist, to obtain either a records search or a cultural resources survey. A record search might be sufficient for review if the site was previously surveyed; however, a cultural resources survey may need to be conducted by a qualified archaeologist.

The Contractor will provide ARC with the following: a topographical map or aerial view in which the site is clearly outlined, site dimensions, project number, and PCN. If applicable, provide evidence that the site has been previously disturbed by farming, mining, or construction activities with a landowner statement that artifacts have not been found on the site.

The Contractor will submit the cultural resources survey report to SDDOT Environmental Office, 700 East Broadway Avenue, Pierre, SD 57501-2586. SDDOT will submit the information to the appropriate SHPO/THPO. Allow 30 Days from the date this information is submitted to the Environmental Engineer for SHPO/THPO review.

In the event of an inadvertent discovery of human remains, funerary objects, or if evidence of cultural resources is identified during project construction activities, then such activities within 100 feet of the inadvertent discovery will immediately cease and the Project Engineer will be immediately notified. The Project Engineer will contact the SDDOT Environmental Office, who will contact the appropriate SHPO/THPO within 48 hours of the discovery to determine an appropriate course of action.

The Contractor is responsible for obtaining any additional permits and clearances for Contractor furnished material sources, material processing sites, stockpile sites, storage areas, plant sites, and waste areas that affect wetlands, threatened and endangered species, or waterways. The Contractor will not utilize a site known or suspected of having contaminated soil or water. The Contractor will provide the required permits and clearances to the Project Engineer at the preconstruction meeting.

SURFACING THICKNESS DIMENSIONS

The plans shown spread rates will be applied even though the thickness may vary from that shown on the plans.

At those locations where material must be placed to achieve a required elevation, the depth/quantity may be varied to achieve the required elevation.

COLD MILLING ASPHALT CONCRETE

Cold milling asphalt will be done according to the typical section. In areas where maintenance patches have raised and/or widened the road, additional asphalt concrete will be milled to provide a uniform surface.

Cold milling asphalt is estimated to produce 819 tons of cold milled asphalt concrete material. The milled asphalt concrete material will become the property of the Contractor.

ASPHALT CONCRETE COMPOSITE

Asphalt will be placed no later than 14 days after cold milling has been completed.

Asphalt for tack SS-1h or CSS-1h will be applied prior the Asphalt Concrete Composite. Asphalt for tack will be applied at a rate of 0.09 gallons per square yard on the existing asphalt surfacing. The Asphalt for tack will be applied for the full width of the bottom layer of Asphalt Concrete Composite plus one-half foot per side beyond the full width.

FLUSH SEAL

Asphalt Patches will require a Flush Seal.

Application of flush seal will be completed within 10 working days following completion of the asphalt concrete surfacing.

ROADWAY CLEANING

The Contractor will be responsible for removing the millings from the roadway surface, including shoulders, intersecting roads, median crossovers, sidewalks, etc. as directed by the Engineer.

All costs for roadway cleaning will be incidental to the contract unit price per square yard for Cold Milling Asphalt Concrete

SEQUENCE OF OPERATIONS

Contractor requests to deviate from the sequence of operations will be submitted in writing to the Engineer for review. Approval of an alternate sequence of operations will only be allowed when the proposed changes meet with the Department's intent for traffic control and sequencing of the work. An alternate sequence will be submitted for review a minimum of one week prior to potential implementation.

- 1. Install Traffic Control Devices
- 2. Cold Mill Asphalt Concrete
- 3. Place 2" Surfacing Lift
- 4. Flush Seal
- 5. Complete Pavement Marking
- 6. Remove Traffic Control Devices

GENERAL TRAFFIC CONTROL

Existing guide, route, informational logo, regulatory, and warning signs will be temporarily reset and maintained during construction. Removing, relocating, covering, salvaging, and resetting of existing traffic control devices, including delineation, will be the responsibility of the Contractor. Cost for this work will be incidental to the contract unit prices for the various items unless otherwise specified in the plans. Any delineators and signs damaged or lost will be replaced by the Contractor at no cost to the State.

All temporary traffic control sign locations will be set in the field by the Contractor and verified by the Engineer prior to installation.

All construction operations will be conducted in the general direction of traffic movement.

STATE OF SOUTH DAKOTA	PROJECT	SHEET	TOTAL SHEETS
	034-451	3	11

If there is a discrepancy between the traffic control plans, standard plates, and the MUTCD, whichever is more stringent will be used, as determined by the Engineer.

Unless otherwise stated in these plans, work will not be allowed during hours of darkness.

All haul trucks will be equipped with an additional flashing amber light that is visible from the backside of the haul truck. The costs for the flashing amber lights will be incidental to the various related contract items.

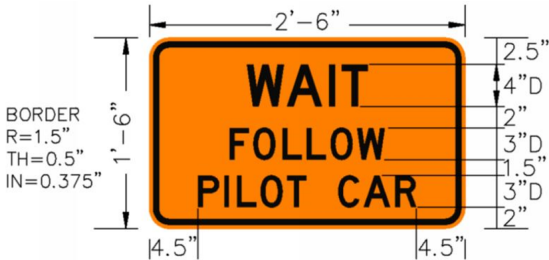
Traffic will be maintained on the driving lanes. Use of the shoulder as a driving lane will not be permitted. Any damage to the shoulder due to rerouted traffic or Contractor's equipment will be repaired at no expense to the Department.

The Contractor will furnish, install, maintain, and remove TRUCK CROSSING (W8-6) signs daily. The TRUCK CROSSING signs will be displayed always when haul vehicles are hauling material. When hauling conditions no longer exist, the signs will be covered or removed from view. The exact number and location will be determined during construction. Payment for additional signs will be based on the contract unit price per square foot for Traffic Control Signs.

FLAGGING

Operations will be conducted so that the traveling public will not have to wait longer than 15 minutes at the flagger station.

Additional flagger warning signs and flagger hours have been included in the Estimate of Quantities for use on intersecting roads. These flaggers will be used as directed by the Engineer and will be used primarily during daytime hours. Also included in the Estimate of Quantities are WAIT FOLLOW PILOT CAR signs for use on low volume intersecting roads as determined by the Engineer. WAIT FOLLOW PILOT CAR signs will not block the view of the stop sign.



It is required that the flaggers and pilot car operators be able to communicate with one another. If an emergency vehicle needs to pass through the project, the Contractor will be required to expedite traffic movement. All costs associated with this will be incidental to the contract unit price per hour for Flagging.



TEMPORARY PAVEMENT MARKING

Temporary Flexible Vertical Markers (Tabs) will be used on the top lift of asphalt surfacing for centerline delineation, lane lines, skips, and as directed by the Engineer. Tabs will be offset 6-inches from the location shown for permanent pavement markings. Centerline will be double yellow lines with tabs spaced at 5’ the entire project length.

Covers on the tabs will be sufficiently secured to prevent traffic from dislodging the cover and when removed, the covers will be properly disposed of. The Contractor will remove and properly dispose of the tabs after permanent pavement marking is applied. Method of removal will be nondestructive to the road surface and will be accomplished within one week of completion of the permanent pavement marking.

Any temporary flexible vertical markers (tabs) with covers removed before the flush seal will be replaced prior to application of the flush seal. Full reflectivity of all temporary flexible vertical markers (tabs) is required at all times. The Contractor will be required to replace any missing or non-reflective tabs at no additional cost to the State.

Quantities of Temporary Pavement Markings consist of:

- One pass on top lift of Asphalt Concrete Composite
- One pass on top of Flush Seal

If the flush seal is eliminated, the application of the temporary pavement marking on top of the flush seal will be eliminated. No adjustment in the contract unit price for Temporary Pavement Marking will be made because of a variation in quantities.

FLAGGER (W20-7) symbol signs and flaggers, or a shadow vehicle with rotating yellow lights or strobe lights will be positioned on the shoulder in advance of workers for both directions of traffic during the installation and removal of the temporary flexible vertical markers (tabs). The traffic control device used will be moved intermittently to provide proper warning of the work operation. A ROAD WORK AHEAD (W20-1) sign, a WORKER (W21-1) symbol sign or a BE PREPARED TO STOP (W3-4) sign will be mounted on the rear of the shadow vehicle. The method of traffic control used by the Contractor for this work must be approved by the Engineer.

Prior to nightfall, tabs will be required to mark centerline on segments of roadway where existing centerline markings have been removed and new markings have not been installed.

ITEMIZED LIST OF TRAFFIC CONTROL DEVICES

		CONVENTIONAL ROAD			
SIGN CODE	SIGN DESCRIPTION	NUMBER	SIGN SIZE	SQFT PER SIGN	SQFT
W3-4	BE PREPARED TO STOP	1	48" x 48"	16.0	16.0
W8-1	BUMP	26	48" x 48"	16.0	416.0
W8-6	TRUCK CROSSING	2	48" x 48"	16.0	32.0
W8-11	UNEVEN LANES	6	48" x 48"	16.0	96.0
W8-15	GROOVED PAVEMENT	5	48" x 48"	16.0	80.0
W20-1	ROAD WORK AHEAD	6	48" x 48"	16.0	96.0
W20-4	ONE LANE ROAD AHEAD	6	48" x 48"	16.0	96.0
W20-7	FLAGGER (symbol)	6	48" x 48"	16.0	96.0
W21-1	WORKERS (symbol)	1	48" x 48"	16.0	16.0
SPECIAL	WAIT FOLLOW PILOT CAR	1	30" x 18"	3.8	3.8
G20-2	END ROAD WORK	6	36" x 18"	4.5	27.0
		CONVENTIONAL ROAD TRAFFIC CONTROL SIGNS SQFT			
		974.8			

HIGH BUILD WATERBORNE PAVEMENT MARKING PAINT

All materials will be applied as per manufacturer’s recommendations. High build waterborne pavement marking paint will conform to the supplemental specifications for Section 980.1 B.

Reflective media will consist of glass beads.

High Build Waterborne Pavement Marking Paint applied after October 15 must be formulated as cold-weather waterborne paint. Cold weather waterborne paint will meet the requirements of Section 980.1 C.

RATES OF MATERIALS FOR HIGH BUILD WATERBORNE PAVEMENT MARKING PAINT

- Solid 4” line = 22.5 Gals/Mile
- Dashed 4” line = 6.2 Gal/Mile
- Glass Beads = 8 Lbs/Gal.

All cost for materials, labor and equipment necessary to furnish and install the pavement markings will be incidental to the contract unit price for the respective High Build Waterborne Pavement Marking Paint items.

STATE OF SOUTH DAKOTA	PROJECT	SHEET	TOTAL SHEETS
	034-451	4	11

Table of Material Quantities											
Route	MRM	Disp	Direction	Length	Width	Comments	Cold Milling Asphalt Concrete	Asphalt Concrete Composite	Temporary Pavement Marking	High Build Waterborne Pavement Marking Paint, 4" Yellow	High Build Waterborne Pavement Marking Paint, 4" White
				(ft)	(ft)		(SqYd)	(Ton)	(Ft)	(Ft)	(Ft)
SD34	40	+ 0.619	EB/WB	100	24	2" mill and overlay	266.7	30.0	300.0	125	200
SD34	59	+ 0.656	WB	250	12	2" mill and overlay	333.3	37.5	750.0	312.5	250
SD34	60	+ 0.083	WB	300	12	2" mill and overlay	400	45.0	900.0	375	300
SD34	60	+ 0.250	WB	350	12	2" mill and overlay	466.7	52.5	1050.0	437.5	350
SD34	67	+ 0.960	EB/WB	250	24	2" mill and overlay	666.7	75.0	750.0	312.5	500
SD34	68	+ 0.200	EB/WB	175	24	2" mill and overlay	466.7	52.5	525.0	218.8	350
SD34	69	+ 0.040	EB/WB	1950	24	2" mill and overlay	5200	585.1	5850.0	2437.5	3900
						Total	7800.1	877.6	10125	4218.8	5850

# TYPICAL SURFACING SECTION

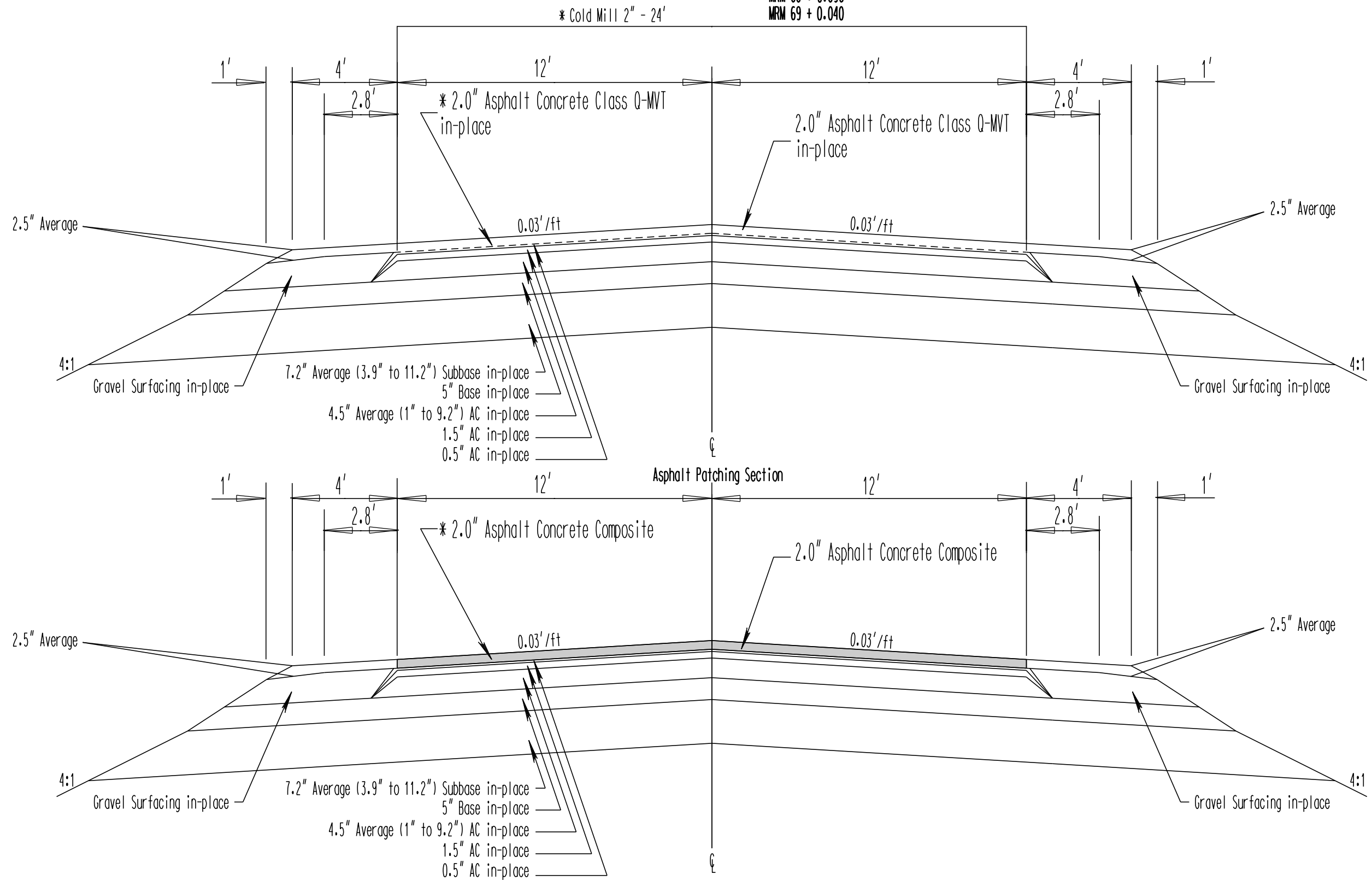
STATE OF SOUTH DAKOTA	PROJECT	SHEET	TOTAL SHEETS
	034-451	6	11

Plotting Date: 03/01/2023

in-place & Cold Milling Section

\* MRM 59 + 0.656  
\* MRM 60 + 0.083  
\* MRM 60 + 0.250  
MRM 67 + 0.960  
MRM 68 + 0.200  
MRM 68 + 0.896  
MRM 69 + 0.040

\* Westbound Lane Only at Specified Locations

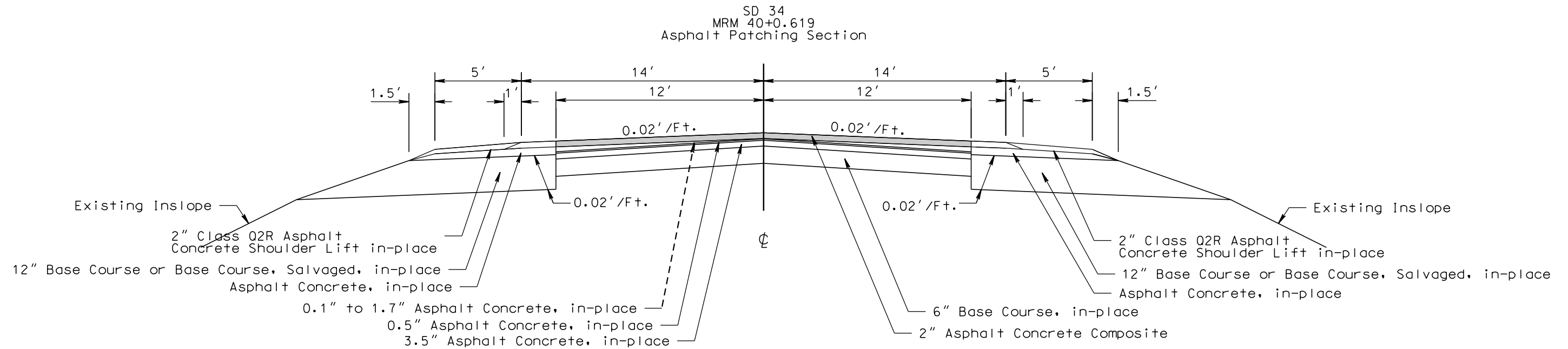


## PLOT SCALE - 1:6,000

PLOTTED FROM - TRRC12608

FLUID NAME - 3

FILE - ... \060811F3.DJIN



# TYPICAL PAVEMENT MARKING LAYOUT

STATE OF SOUTH DAKOTA	PROJECT	SHEET NO.	TOTAL SHEETS
	034-451	8	11

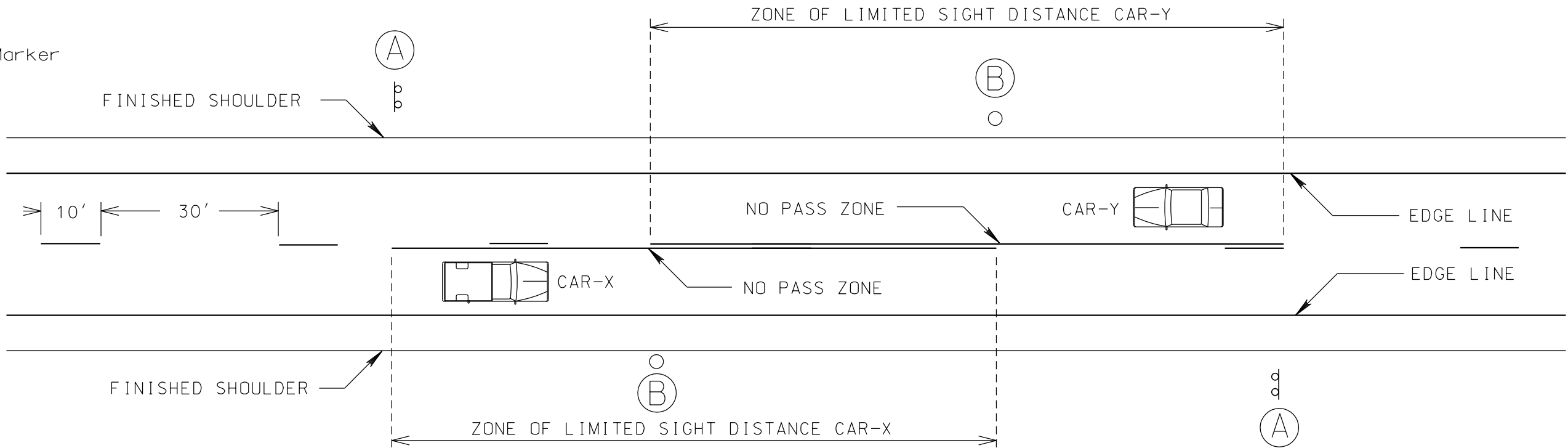
Plotting Date: 03/01/2023

Plot Scale - 1:20

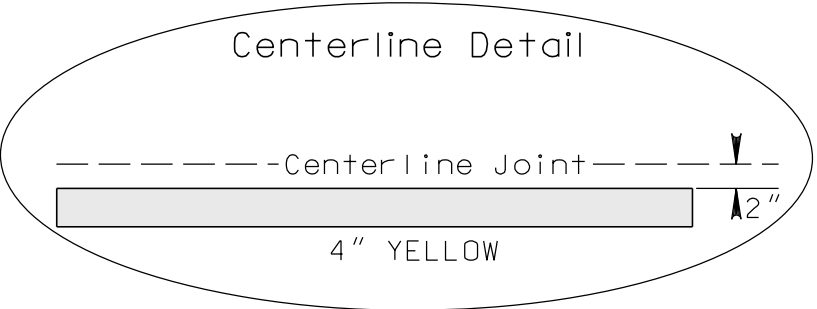
Plotted From - TRRC12608



(B) End of Zone Marker



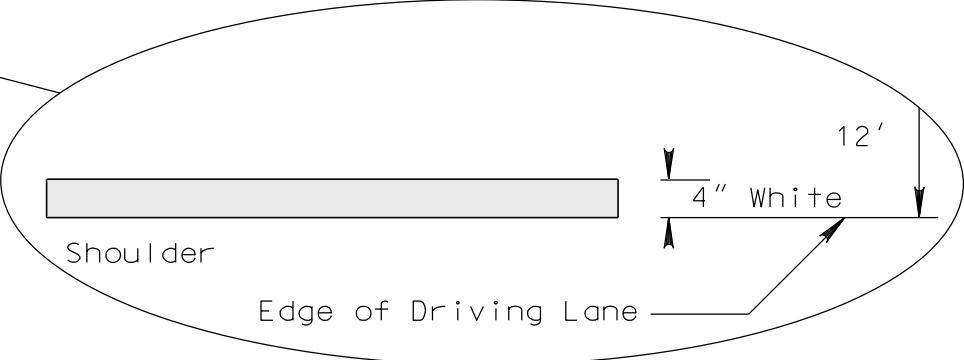
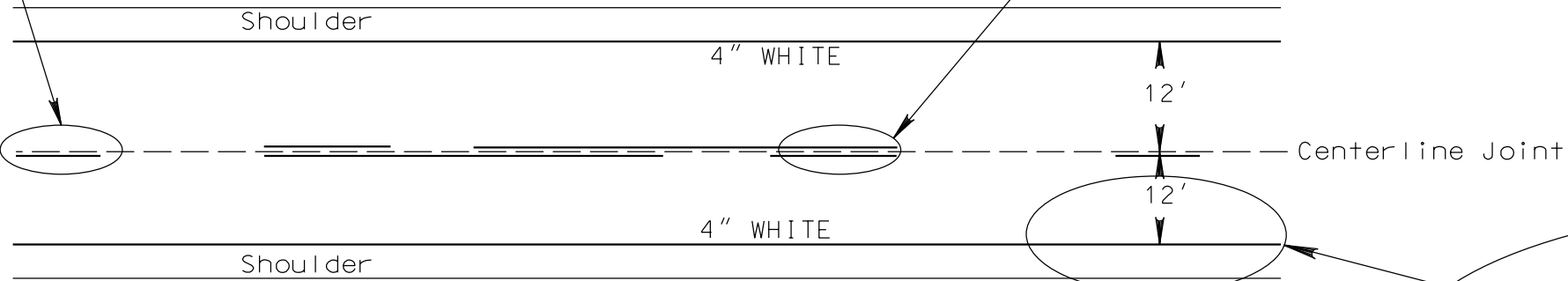
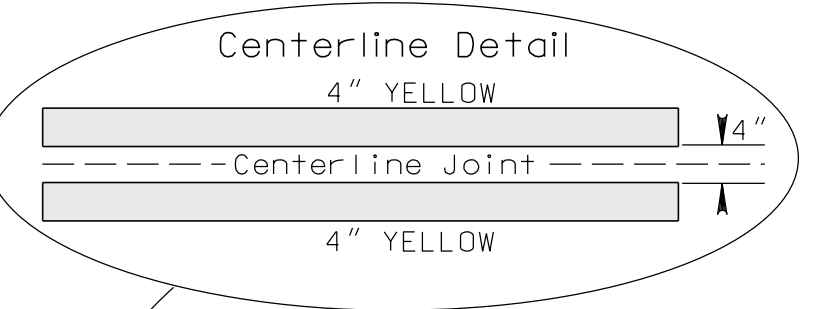
Centerline Detail



NOTE: A TWO "GUN" SYSTEM WILL BE USED TO OBTAIN THIS PATTERN.

WHEN A SINGLE SKIP LINE EXISTS, THE SKIP WILL BE PLACED TO THE SOUTH OR EAST OF THE CENTERLINE JOINT.

Centerline Detail



File - ...PavementMarkingDetails.dgn



\* Messages on signs will vary depending on the operation being conducted.

Vehicle-mounted signs will be mounted in a manner such that they are not obscured by equipment or supplies. Sign legends on vehicle-mounted signs will be covered or turned from view when work is not in progress.

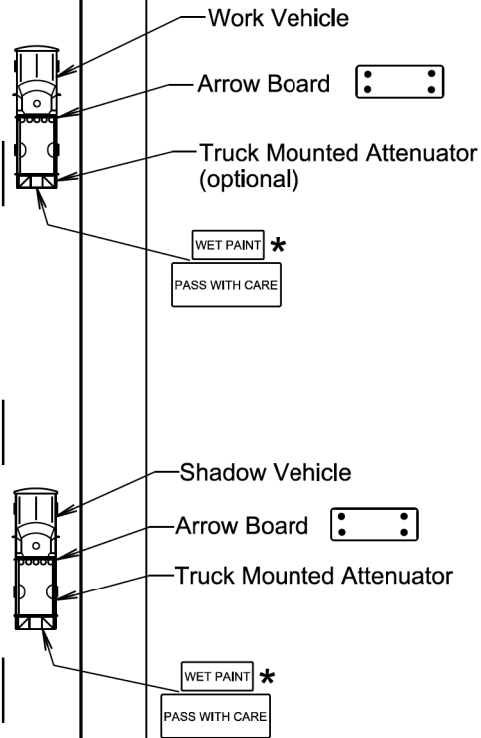
Shadow and Work vehicles will display high-intensity rotating, flashing, oscillating, or strobe lights, flags, signs, or arrow boards.

Vehicle hazard warning signals will not be used instead of the vehicle's high-intensity rotating, flashing, oscillating, or strobe lights.

When an arrow board is used, it will be used in the caution mode. Marching Diamonds are acceptable.

Arrow boards will, as a minimum, be Type B, with a size of 60" x 30".

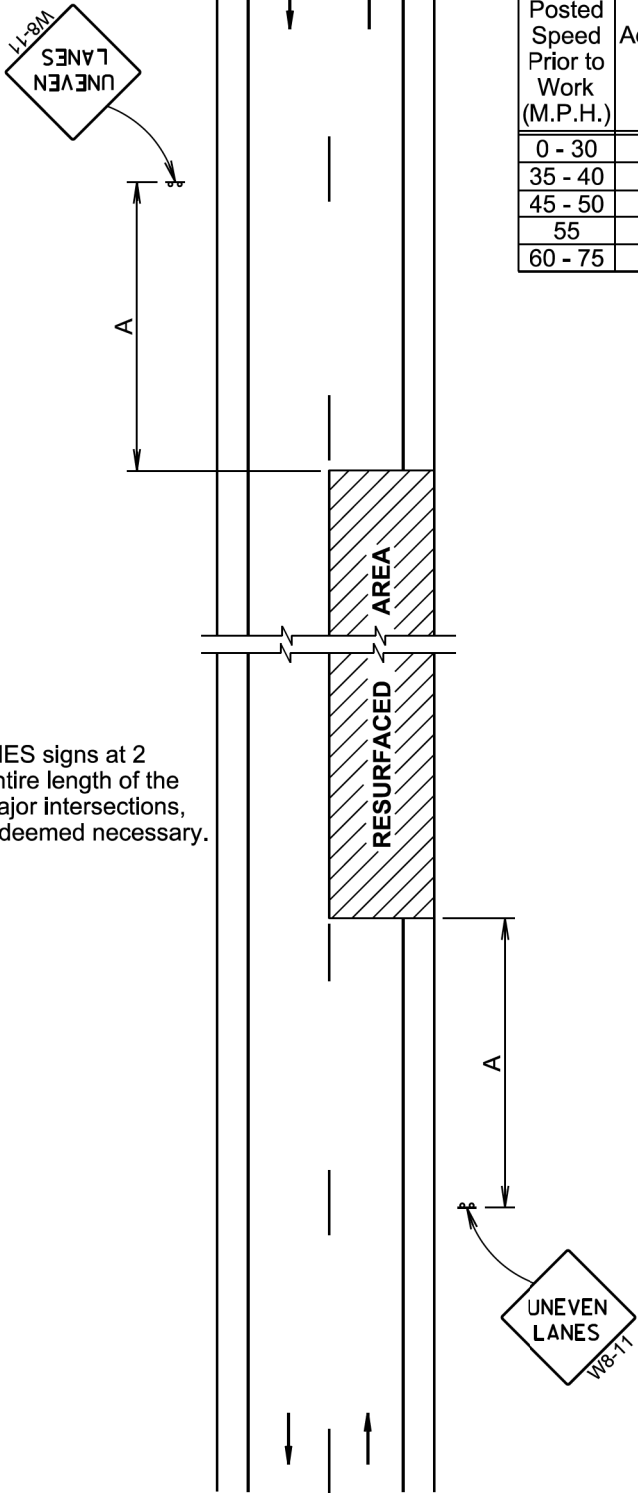
All costs associated with the traffic control for mobile operation including signs, arrow boards and equipment will be incidental to the contract lump sum price for "Traffic Control, Miscellaneous".



January 22, 2021

Published Date: 1st Qtr. 2023	S D D O T	MOBILE OPERATIONS ON 2-LANE ROAD	PLATE NUMBER
			634.06
			Sheet 1 of 1

Install additional UNEVEN LANES signs at 2 mile intervals throughout the entire length of the uneven area and at affected major intersections, edge of towns, and other sites deemed necessary.



January 22, 2021

Published Date: 1st Qtr. 2023	S D D O T	UNEVEN ROAD SURFACE	PLATE NUMBER
			634.22
			Sheet 1 of 1

Posted Speed Prior to Work (M.P.H.)	Spacing of Advance Warning Signs (Feet) (A)
0 - 30	200
35 - 40	350
45 - 50	500
55	750
60 - 75	1000

Posted Speed Prior to Work (M.P.H.)	Spacing of Advance Warning Signs (Feet) (A)	Spacing of Channelizing Devices (Feet) (G)
0 - 30	200	25
35 - 40	350	25
45	500	25
50	500	50
55	750	50
60 - 65	1000	50

- Flagger
- Channelizing Device

For low-volume traffic situations with short work zones on straight roadways where the flagger is visible to road users approaching from both directions, a single flagger may be used.

The ROAD WORK AHEAD and the END ROAD WORK signs may be omitted for short duration operations (1 hour or less).

For tack and/or flush seal operations, when flaggers are not being used, the FRESH OIL sign (W21-2) will be displayed in advance of the liquid asphalt areas.

Flashing warning lights and/or flags may be used to call attention to the advance warning signs.

The channelizing devices will be drums or 42" cones.

Channelizing devices are not required along the centerline adjacent to work area when pilot cars are utilized for escorting traffic through the work area.

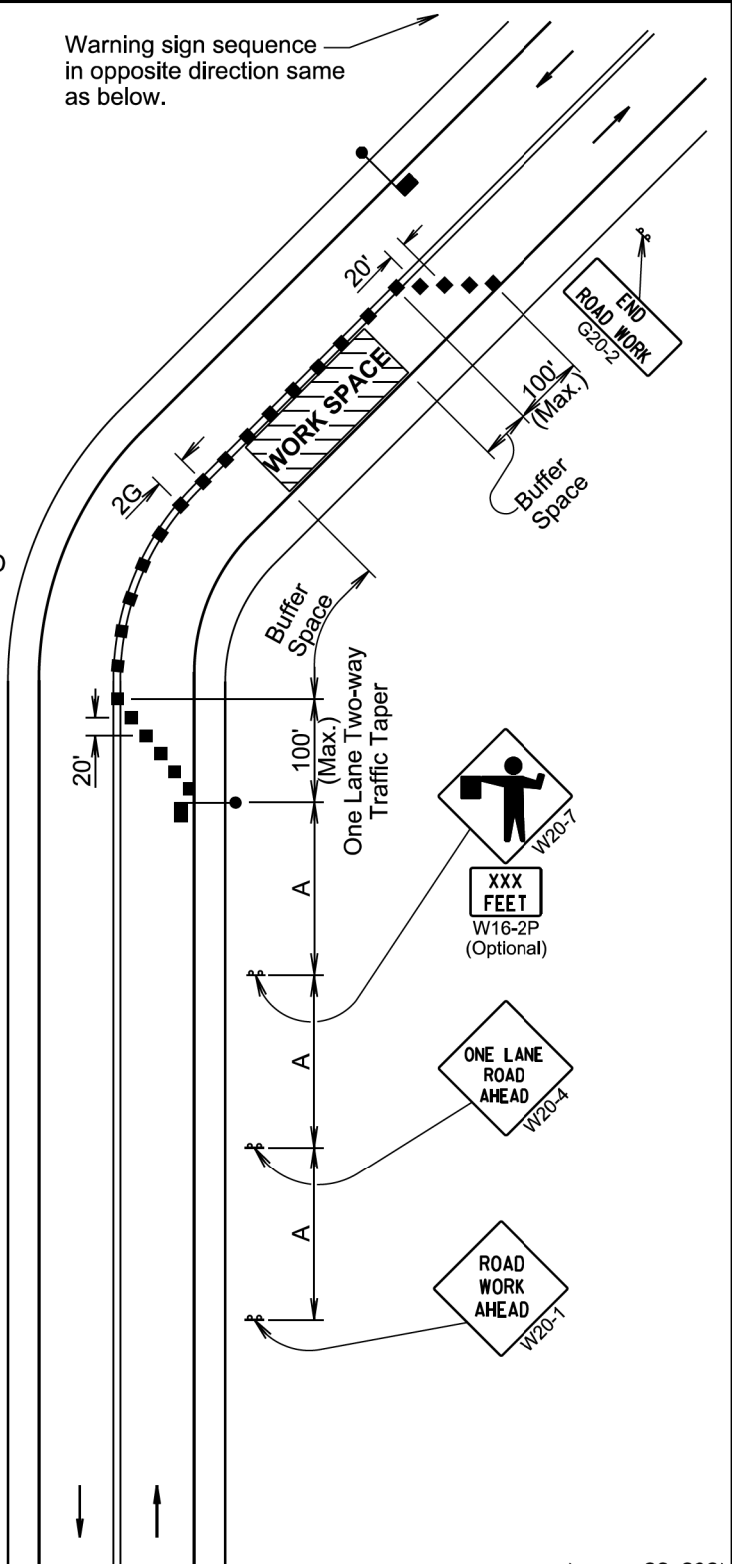
END ROAD WORK G20-2

Channelizing devices and flaggers will be used at intersecting roads to control intersecting road traffic as required.

The buffer space should be extended so that the two-way traffic taper is placed before a horizontal or vertical curve to provide adequate sight distance for the flagger and queue of stopped vehicles.

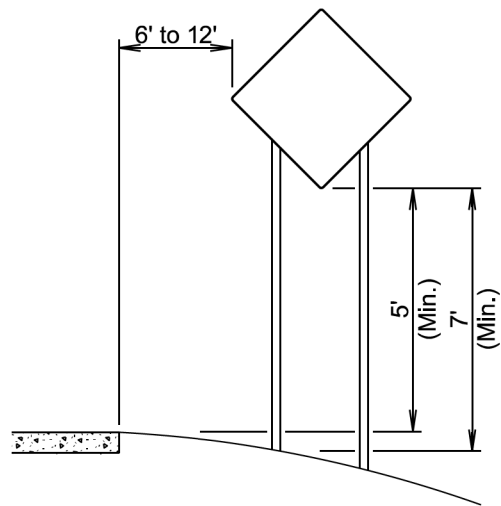
The length of A may be adjusted to fit field conditions.

Warning sign sequence in opposite direction same as below.

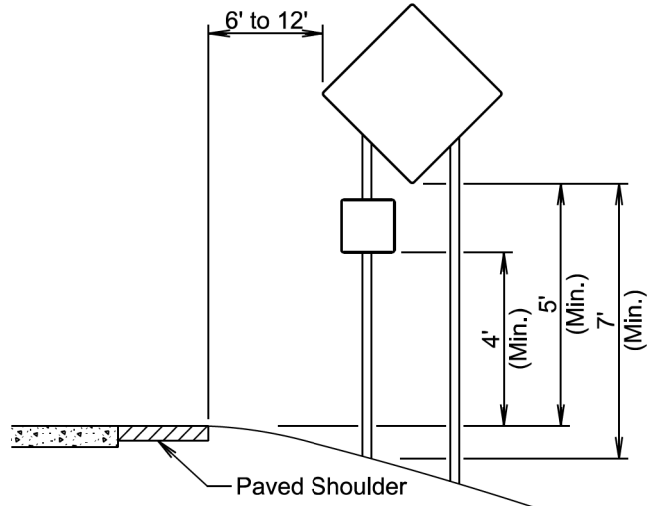


January 22, 2021

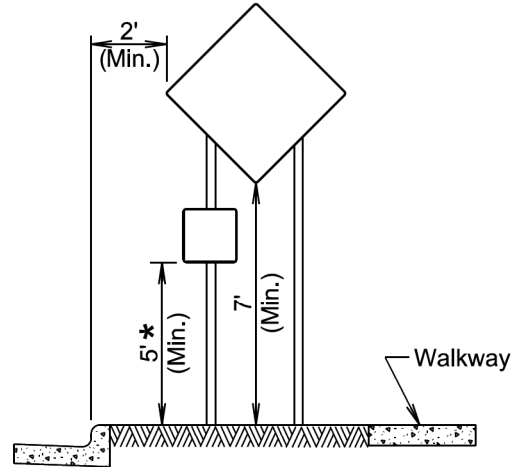
Published Date: 1st Qtr. 2023	S D D O T	LANE CLOSURE WITH FLAGGER PROVIDED	PLATE NUMBER 634.23
			Sheet 1 of 1



RURAL DISTRICT

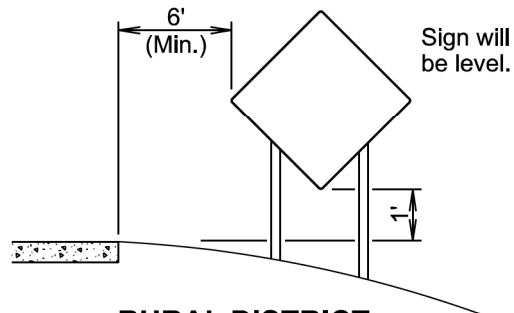


RURAL DISTRICT WITH SUPPLEMENTAL PLATE



URBAN DISTRICT

\* If the bottom of supplemental plate is mounted lower than 7 feet above a pedestrian walkway, the supplemental plate should not project more than 4" into the pedestrian facility.



RURAL DISTRICT 3 DAY MAXIMUM

(Not applicable to regulatory signs)

January 22, 2021

Published Date: 1st Qtr. 2023	S D D O T	CRASHWORTHY SIGN SUPPORTS (Typical Construction Signing)	PLATE NUMBER 634.85
			Sheet 1 of 1

STATE OF SOUTH DAKOTA	PROJECT	SHEET	TOTAL SHEETS
	034-451	11	11

Plotting Date: 03/01/2023

