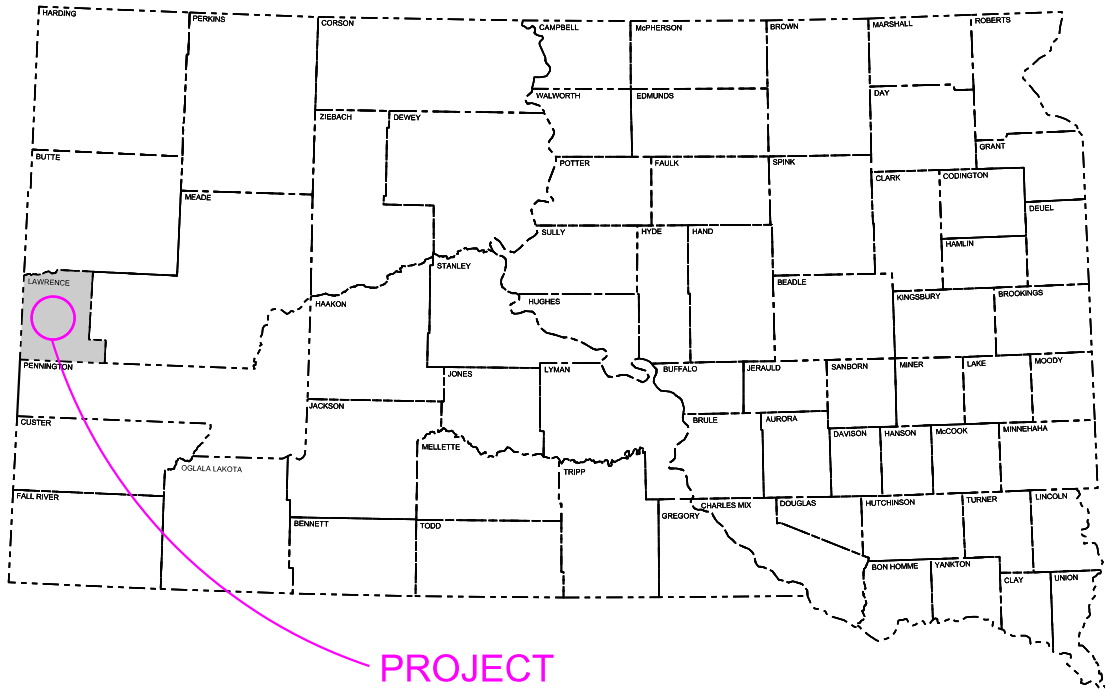


Plot Scale - 1:200

Plotted From - TRRC12608



PROJECT
014A-451 - MRM 11 to MRM 27.525

014A-451 - MRM 32.546

014A-451 - MRM 36.122

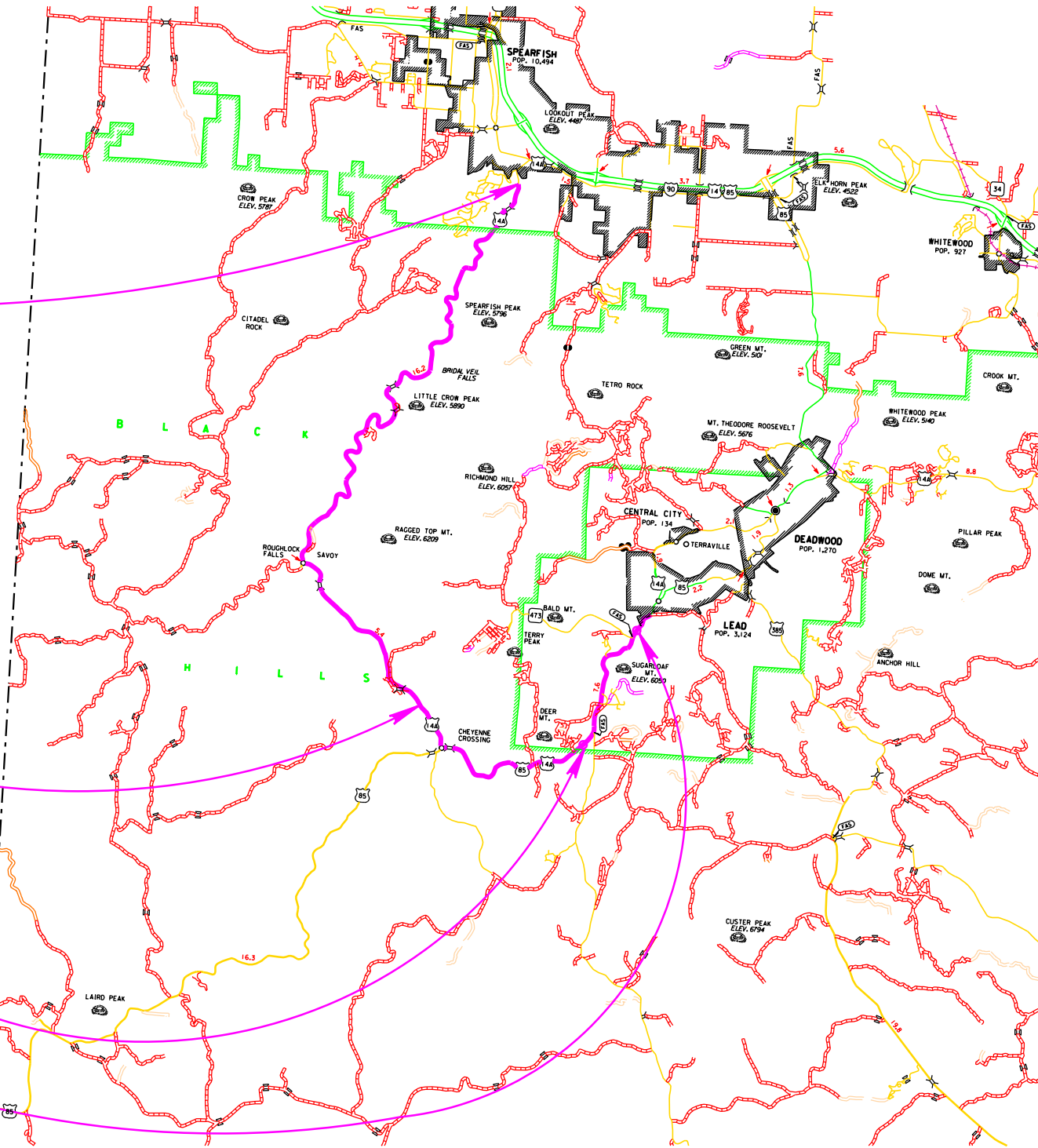
STATE OF SOUTH DAKOTA
DEPARTMENT OF TRANSPORTATION
PLANS FOR PROPOSED
PROJECT 000N-451
US HIGHWAY 14A
LAWRENCE COUNTY
PCN i74f
REMOVAL OF HAZARD TREES

STATE OF SOUTH DAKOTA	PROJECT	SHEET	TOTAL SHEETS
	000N-451	1	12

Plotting Date: 03/06/2023

INDEX OF SHEETS

- | | |
|-------|---------------------------|
| 1 | General Layout with Index |
| 2 - 5 | Plan Notes & Tables |
| 6 - 9 | Standard Plates |
| 10-12 | Maps |



DESIGN DESIGNATION
AADT (2022) 1842
AADT (2042) 2669
DHV 437
D 51%
DHV T% 1.8%
AADT T% 3.9%
V 40-65 mph

STORM WATER PERMIT
None Required

ESTIMATE OF QUANTITIES

BID ITEM NUMBER	ITEM	QUANTITY	UNIT
009E0010	Mobilization	Lump Sum	LS
100E0020	Clear and Grub Tree	85	Each
634E0010	Flagging	200.0	Hour
634E0110	Traffic Control Signs	137.0	SqFt
634E0120	Traffic Control, Miscellaneous	Lump Sum	LS
734E0010	Erosion Control	Lump Sum	LS

SPECIFICATIONS

Standard Specifications for Roads and Bridges, 2015 Edition and Required Provisions, Supplemental Specifications, and Special Provisions as included in the Proposal.

ENVIRONMENTAL COMMITMENTS

The SDDOT is committed to protecting the environment and uses Environmental Commitments as a communication tool for the Engineer and Contractor to ensure that attention is given to avoid, minimize, and/or mitigate an environmental impact. Environmental commitments to various agencies and the public have been made to secure approval of this project. An agency with permitting authority can delay a project if identified environmental impacts have not been adequately addressed. Unless otherwise designated, the Contractor's primary contact regarding matters associated with these commitments will be the Project Engineer. During construction, the Project Engineer will verify that the Contractor has met Environmental Commitment requirements. These environmental commitments are not subject to change without prior written approval from the SDDOT Environmental Office.

Additional guidance on SDDOT's Environmental Commitments can be accessed through the Environmental Procedures Manual found at: <<https://dot.sd.gov/media/documents/EnvironmentalProceduresManual.pdf> >

For questions regarding change orders in the field that may have an effect on an Environmental Commitment, the Project Engineer will contact the Environmental Engineer at 605-773-3180 or 605-773-4336 to determine whether an environmental analysis and/or resource agency coordination is necessary.

Once construction is complete, the Project Engineer will review all environmental commitments for the project and document their completion.

COMMITMENT B: FEDERALLY THREATENED, ENDANGERED, AND PROTECTED SPECIES

COMMIMENT B2: WHOOPING CRANE

The Whooping Crane is a spring and fall migratory bird in South Dakota that is about 5 feet tall and typically stops on wetlands, rivers, and agricultural lands along their migration route. An adult Whooping Crane is white with a red crown and a long, dark, pointed bill. Immature Whooping Cranes are cinnamon brown. While in flight, their long necks are kept straight and their long dark legs trail behind. Adult Whooping Cranes' black wing tips are visible during flight.

Action Taken/Required:

Harassment or other measures to cause the Whooping Crane to leave the site is a violation of the Endangered Species Act. If a Whooping Crane is sighted roosting in the vicinity of the project, borrow pits, or staging areas associated with the project, cease construction activities in the affected area until the Whooping Crane departs and immediately contact the Project Engineer. The Project Engineer will contact the Environmental Office so that the sighting can be reported to USFWS.

COMMITMENT B4: BALD EAGLE

Bald eagles are known to occur in this area.

Action Taken/Required:

If a nest is observed within one mile of the project site, notify the Project Engineer immediately so that he/she can consult with the Environmental Office for an appropriate course of action.

COMMITMENT B5: NORTHERN LONG-EARED BAT

This project is within the range of suitable habitat for the Northern Long-Eared Bat (NLEB) and project work will avoid conflicts with NLEB roosting habitat.

Action Taken/Required:

Project activities that include tree removal, structure work, and/or work within one-quarter mile of a known hibernacula or 150 feet of a known maternity roost tree, or suitable habitat should not occur within the location(s) listed below during the NLEB seasonal work restriction timeframe without approval from the SDDOT Environmental Office.

Station	NLEB Seasonal Work Restriction
Project Wide	April 1 to October 31

Tree removal will occur between November 1st and March 31st.

COMMITMENT E: STORM WATER

Construction activities constitute less than 1 acre of disturbance.

Action Taken/Required:

At a minimum and regardless of project size, appropriate erosion and sediment control measures must be installed to control the discharge of pollutants from the construction site.

COMMITMENT H: WASTE DISPOSAL SITE

The Contractor will furnish a site(s) for the disposal of construction and/or demolition debris generated by this project.

Action Taken/Required:

Unless noted in these plans, construction and/or demolition debris may not be disposed of within the Public ROW.

The waste disposal site(s) will be managed and reclaimed in accordance with the following from the General Permit for Construction/Demolition Debris Disposal Under the South Dakota Waste Management Program issued by the Department of Agriculture and Natural Resources.

The waste disposal site(s) will not be located in a wetland, within 200 feet of surface water, or in an area that adversely affects wildlife, recreation, aesthetic value of an area, or any threatened or endangered species, as approved by the Environmental Office and the Project Engineer.

If the waste disposal site(s) is located such that it is within view of any ROW, the following additional requirements will apply:

1. Construction and/or demolition debris consisting of concrete, asphalt concrete, or other similar materials will be buried in a trench separate from wood debris. The final cover over the construction and/or demolition debris will consist of a minimum of 1 foot of soil capable of supporting vegetation. Waste disposal sites provided outside of the Public ROW will be seeded in accordance with Natural Resources Conservation Service recommendations. The seeding recommendations may be obtained through the appropriate County NRCS Office. The Contractor will control the access to waste disposal sites not within the Public ROW with fences, gates, and placement of a sign or signs at the entrance to the site stating, "No Dumping Allowed".
2. Concrete and asphalt concrete debris may be stockpiled within view of the ROW for a period not to exceed the duration of the project. Prior to project completion, the waste will be removed from view of the ROW or buried, and the waste disposal site reclaimed as noted above.

The above requirements will not apply to waste disposal sites that are covered by an individual solid waste permit as specified in SDCL 34A-6-58, SDCL 34A-6-1.13, and ARSD 74:27:10:06.

Failure to comply with the requirements stated above may result in civil penalties in accordance with South Dakota Solid Waste Law, SDCL 34A-6-1.31.

All costs associated with furnishing waste disposal site(s), disposing of waste, maintaining control of access (fence, gates, and signs), and reclamation of the waste disposal site(s) will be incidental to the various contract items.

COMMITMENT I: HISTORIC PRESERVATION OFFICE CLEARANCES

The SDDOT has obtained concurrence with the State Historic Preservation Office (SHPO or THPO) for all work included within the project limits and all department designated sources and designated option material sources, stockpile sites, storage areas, and waste sites provided within the plans.

Action Taken/Required:

All earth disturbing activities not designated within the plans require a cultural resource review prior to scheduling the pre-construction meeting. This work includes but is not limited to: Contractor furnished material sources, material processing sites, stockpile sites, storage areas, plant sites, and waste areas.

The Contractor will arrange and pay for a record search and when necessary, a cultural resource survey. The Contractor has the option to contact the state Archaeological Research Center (ARC) at 605-394-1936 or another qualified archaeologist, to obtain either a records search or a cultural resources survey. A record search might be sufficient for review if the site was previously surveyed; however, a cultural resources survey may need to be conducted by a qualified archaeologist.

The Contractor will provide ARC with the following: a topographical map or aerial view in which the site is clearly outlined, site dimensions, project number, and PCN. If applicable, provide evidence that the site has been previously disturbed by farming, mining, or construction activities with a landowner statement that artifacts have not been found on the site.

The Contractor will submit the cultural resources survey report to SDDOT Environmental Office, 700 East Broadway Avenue, Pierre, SD 57501-2586. SDDOT will submit the information to the appropriate SHPO/THPO. Allow **30 Days** from the date this information is submitted to the Environmental Engineer for SHPO/THPO review.

In the event of an inadvertent discovery of human remains, funerary objects, or if evidence of cultural resources is identified during project construction activities, then such activities within 100 feet of the inadvertent discovery will immediately cease and the Project Engineer will be immediately notified. The Project Engineer will contact the SDDOT Environmental Office, who will contact the appropriate SHPO/THPO within 48 hours of the discovery to determine an appropriate course of action.

SHPO/THPO review does not relieve the Contractor of the responsibility for obtaining any additional permits and clearances for Contractor furnished material sources, material processing sites, stockpile sites, storage areas, plant sites, and waste areas that affect wetlands, threatened and endangered species, or waterways. The Contractor will not utilize a site known or suspected of having contaminated soil or water. The Contractor will provide the required permits and clearances to the Project Engineer at the preconstruction meeting.

SDDOT ROW CORNERS

The SDDOT right-of-way is marked with a rebar with aluminum cap and a brown Carsonite post at key points. Contractor will take care to not disturb these right-of-way points during the project. Any corners and/or Carsonite disturbed by the contractor will be replaced.

BLACK HILLS NATIONAL FOREST CONTACT INFORMATION

Steve Kozel
District Ranger

Forest Service
Black Hills National Forest, Northern Hills Ranger District

p: 605-642-4622 x 3050
steve.kozel@usda.fed.gov

2014 North Main Street
Spearfish, SD 57783

CLEAR AND GRUB TREE

The hazard trees to clear on this project are described as dead or dying that are immediate hazards to the highway. These hazard trees will be removed from the project limits and properly disposed of by the Contractor.

If the Contractor plans to convert the removed trees to a saleable product, then the Contractor will notify the Forest Service to obtain the necessary permits. The Contractor will coordinate with the Black Hills National Forest, Northern Hills Ranger District for permitting and ensuring proper disposal of removed trees.

Limbs removed from trees may remain within the highway right of way. These limbs will be placed outside the clear-zone. The clear-zone width is 10' measured from the travel lane for posted speeds 40 mph or less highways. The clear-zone width is 30' measured from the travel lane for posted speeds greater than 40 mph highways.

Limbs will be bucked and slashed to a height of less than 18" if left onsite.

Before clearing activities begin, the Contractor will contact the Project Engineer to identify what trees are to be cleared on the project.

The Contractor will avoid rutting and excessive soil disturbance during operations. If excessive rutting or soil disturbance occurs, the Contractor will stop operations and wait until the soil achieves enough strength to support equipment or change operation and retrieve trees with some other less soil disturbing method.

Extra care will be taken not to damage other nearby trees during the clearing process.

The Contractor will avoid wetlands, streams, and riparian areas during operations.

The Contractor is responsible for keeping the roadway clear of debris. No separate payment will be made for this work.

The Contractor will grade and level the soil to the original condition if disturbed by clearing activities. No separate payment will be made for this work.

All work descried in this section will be incidental to the contract unit price bid per each for Clear and Grub Tree.

TABLE OF CLEAR AND GRUB TREE

Table of Clear and Grub Tree						
						Clear and Grub Tree
Highway	MRM	Disp	Side		Additional Comments	(Each)
014A	11	+ 0.229	L	Tree Removal	Non Spruce or pine (Hardwood)	1
014A	12	+ 0.045	L	Tree Removal		1
014A	12	+ 0.360	R	Tree Removal	Multiple trees in group	5
014A	12	+ 0.400	R	Tree Removal		1
014A	13	+ 0.240	R	Tree Removal		1
014A	13	+ 0.260	R	Tree Removal		1
014A	13	+ 0.420	R	Tree Removal		1
014A	13	+ 0.790	R	Tree Removal		1
014A	13	+ 0.840	R	Tree Removal	2 trees in one area	2
014A	13	+ 0.890	L	Tree Removal		1
014A	13	+ 0.910	R	Tree Removal	2 trees in one area	2
014A	13	+ 0.950	R	Tree Removal		1
014A	14	+ 0.450	L	Tree Removal		1
014A	14	+ 0.530	R	Tree Removal	Multiple trees in one area	3
014A	14	+ 0.853	R	Tree Removal	Tree still alive but base is starting to rot	1
014A	15	+ 0.750	R	Tree Removal		1
014A	16	+ 0.930	R	Tree Removal		1
014A	17	+ 0.000	R	Tree Removal	Group of 4 dead trees	4
014A	17	+ 0.240	L	Tree Removal		1
014A	17	+ 0.340	R	Tree Removal		1
014A	17	+ 0.360	R	Tree Removal		1
014A	17	+ 0.510	R	Tree Removal		1
014A	17.74	+ 0.020	R	Tree Removal		1
014A	18	+ 0.500	R	Tree Removal		1
014A	19	+ 0.016	R	Tree Removal		1
014A	19	+ 0.360	R	Tree Removal		1
014A	19	+ 0.530	L	Tree Removal		1
014A	19	+ 0.860	R	Tree Removal		1
014A	19	+ 0.910	L	Tree Removal		1
014A	20	+ 0.410	R	Tree Removal		1
014A	20	+ 0.410	L	Tree Removal		1
					Subtotal	42

Table of Clear and Grub Treeel (Continued)						
						Clear and Grub Tree
Highway	MRM	Disp	Side		Additional Comments	(Each)
014A	20	+ 0.487	L	Tree Removal		1
014A	20	+ 0.730	R	Tree Removal		1
014A	20	+ 0.908	R	Tree Removal		1
014A	21	+ 0.033	L	Tree Removal		1
014A	21	+ 0.950	R	Tree Removal		1
014A	24	+ 0.028	L	Tree Removal		1
014A	24	+ 0.156	L	Tree Removal		1
014A	24	+ 0.260	R	Tree Removal		1
014A	24.45	+ 0.096	L	Tree Removal		1
014A	24.45	+ 0.166	L	Tree Removal		1
014A	25	+ 0.197	R	Tree Removal		1
014A	25	+ 0.262	L	Tree Removal		1
014A	25	+ 0.319	R	Tree Removal	Cluster of dead trees	5
014A	25	+ 0.335	L	Tree Removal	Cluster of dead trees	5
014A	25	+ 0.414	L	Tree Removal		1
014A	25	+ 0.457	R	Tree Removal		1
014A	25	+ 0.798	L	Tree Removal		1
014A	25	+ 0.799	R	Tree Removal		1
014A	26	+ 0.048	L	Tree Removal		1
014A	26	+ 0.208	L	Tree Removal		1
014A	26	+ 0.242	L	Tree Removal		1
014A	26	+ 0.282	L	Tree Removal		1
014A	26	+ 0.358	L	Tree Removal	Cluster of dead trees	5
014A	26	+ 0.702	L	Tree Removal		1
014A	26	+ 0.709	R	Tree Removal		1
014A	26	+ 0.815	R	Tree Removal		1
014A	27	+ 0.245	R	Tree Removal		1
014A	27	+ 0.252	R	Tree Removal		1
014A	27	+ 0.281	R	Tree Removal		1
014A	32	+ 0.546	L	Tree Removal		1
014A	36	+ 0.122	R	Tree Removal		1
					Subtotal	43
					Total	85

EROSION CONTROL

All costs for the erosion control work for furnishing, placing, and maintaining erosion control including equipment, labor, installing and removing wattles, permanent seeding, fertilizing, and fiber mulching will be incidental to the contract lump sum price for Erosion Control.

The limits of erosion control work will be for all locations disturbed during construction. These limits will be determined by the Engineer during construction.

Erosion control wattles for restraining the flow of runoff and sediment will be installed at locations to protect water resources as directed by the Project Engineer. Refer to Standard Plate 734.06 for details.

The Contractor will provide certification that the erosion control wattles do not contain noxious weed seeds.

The erosion control wattle provided will be from the following approved product list: <http://apps.sd.gov/HC60ApprovedProducts/main.aspx>

Type F Permanent Seed Mixture will consist of the following:

Grass Species	Variety	Pure Live Seed (PLS) (Pounds/Acre)
Western Wheatgrass	Arriba, Flintlock, Rodan, Rosana, Walsh	7
Green Needlegrass	Lodorm, AC Mallard Ecovar	4
Sideoats Grama	Butte, Pierre	3
Blue Grama	Bad River	2
Oats or Spring Wheat: April through May; Winter Wheat: August through November		10
Total:		26

Mycorrhizal inoculum will consist of mycorrhizal fungi spores and mycorrhizal fungi-infected root fragments in a solid carrier. The carrier may include organic materials, calcinated clay, or other materials consistent with application and good plant growth. The supplier will provide certification of the fungal species claimed and the live propagule count. The inoculum will include the following fungal species:

- 25%
25%
25%
25%
- Glomus intraradices*
Glomus aggregatum or deserticola
Glomus mosseae
Glomus etunicatum

All seed will be inoculated by the seed supplier with a minimum of 100,000 live propagules of mycorrhizal fungi per acre. All costs of inoculating the seed will be incidental to the contract lump sum price for Erosion Control.

The mycorrhizal inoculum will be as shown below or an approved equal:

Product	Manufacturer
MycoApply	Mycorrhizal Applications, Inc. Grants Pass, OR Phone: 1-866-476-7800 www.mycorrhizae.com
AM 120 Multi Species Blend	Reforestation Technologies Int. Gilroy, CA Phone: 1-800-784-4769 www.reforest.com

The Contractor will apply an all-natural slow release fertilizer prior to seeding or placing sod. The all-natural fertilizer will have a minimum guaranteed analysis of 4-4-4 and be USDA Certified BioBased. It should provide a minimum of 4% (N) nitrogen with a minimum water insoluble nitrogen (WIN) fraction of 2.07%, a minimum of 4% (P2O5) available phosphate, a minimum of 4% (K2O) soluble potash, and a maximum carbon to nitrogen ratio (C:N ratio) of 5:1. The all-natural fertilizer will be free of weed-seed and pathogens accomplished through thermophilic composting, and not mechanical or chemical sterilization, to assure presence of beneficial soil microbiology. The fertilizer will have a near neutral pH, a low salt index, a low biological oxygen demand, contain organic humic and fulvic acids, and have high aerobic organism counts. The fertilizer will also be stable, free of bad odors, and be unattractive as a food source for animals. It should also be in a granular form that is easily spread.

The fertilizer will be applied at a rate of 1,500 pounds per acre in accordance with the manufacturer's recommended method of application.

The all-natural slow release fertilizer will be as shown below or an approved equal:

Product	Manufacturer
Sustane	Sustane Corporate Headquarters Cannon Falls, Minnesota Phone: 1-800-352-9245 www.sustane.com
Perfect Blend	Perfect Blend, LLC Bellevue, WA Phone: 1-866-456-8890 www.perfect-blend.com

Fiber mulch will be applied in a separate operation following permanent seeding.

An additional 2% by weight of tackifier will be added to the fiber mulch product selected from the approved product list. If the product selected has guar gum tackifier included, then the additional 2% of tackifier will be guar gum. If the product selected has synthetic tackifier included, then the additional 2% of tackifier will be synthetic.

The Contractor will allow the fiber mulch to cure a minimum of 18 hours prior to watering or any storm event to ensure proper cohesion between the soil and fiber particles.

All costs for the additional tackifier added to the fiber mulch including labor, equipment, and materials will be incidental to the contract lump sum price for Erosion Control.

The fiber mulch provided will be from the approved product list. The approved product list for fiber mulch may be viewed at the following internet site:

<http://sddot.com/business/certification/products/Default.aspx>

TRAFFIC CONTROL – GENERAL NOTES

Unless otherwise stated in these plans, no work will be allowed during hours of darkness.

All materials and equipment will be stored a minimum distance of 30' from the traveled way during nonworking hours.

All haul trucks will be equipped with a second flashing amber light that is visible from the backside of the haul truck. The costs for the flashing amber lights will be incidental to the various related contract bid items.

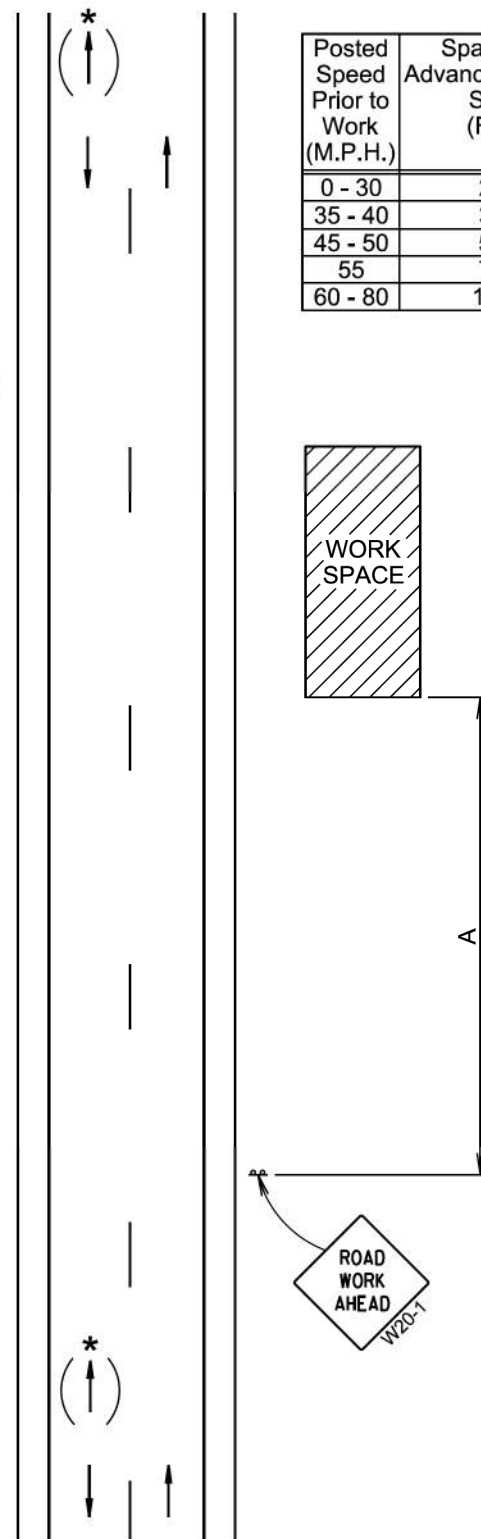
All construction operations will be conducted in the general direction of traffic movement.

INVENTORY OF TRAFFIC CONTROL DEVICES

		CONVENTIONAL ROAD			
SIGN CODE	SIGN DESCRIPTION	NUMBER	SIGN SIZE	SQFT PER SIGN	SQFT
W3-4	BE PREPARED TO STOP	2	48" x 48"	16.0	32.0
W20-1	ROAD WORK AHEAD	2	48" x 48"	16.0	32.0
W20-7	FLAGGER (symbol)	2	48" x 48"	16.0	32.0
W21-5	SHOULDER WORK	2	48" x 48"	16.0	32.0
G20-2	END ROAD WORK	2	36" x 18"	4.5	9.0
		CONVENTIONAL ROAD TRAFFIC CONTROL SIGNS SQFT			
		137.0			

For short term, short duration, or mobile operations, all signs and channelizing devices may be eliminated if a vehicle with an activated flashing or revolving yellow light is used.

Posted Speed Prior to Work (M.P.H.)	Spacing of Advance Warning Signs (Feet) (A)
0 - 30	200
35 - 40	350
45 - 50	500
55	750
60 - 80	1000

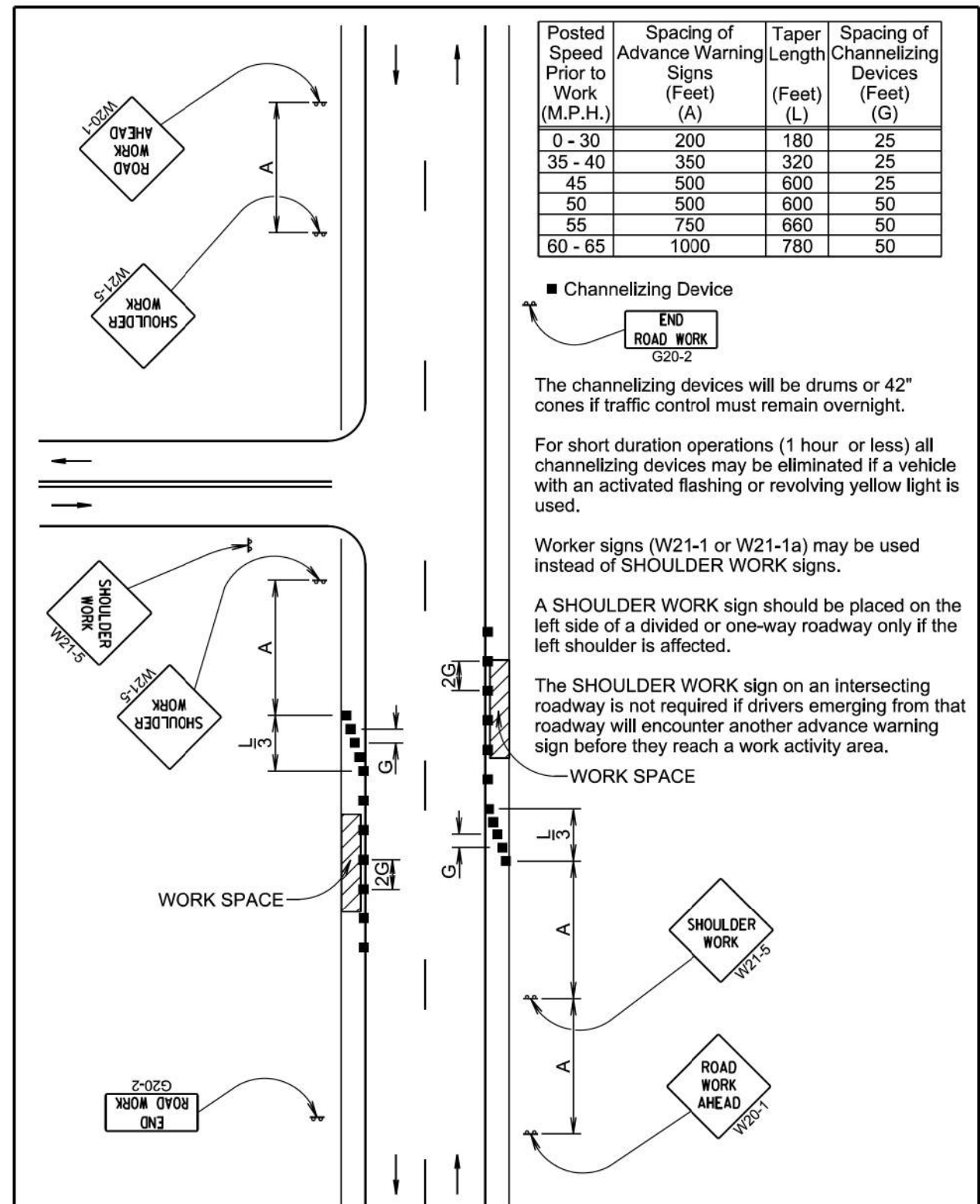


January 22, 2021

**S
D
D
O
T**

Published Date: 1st Qtr. 2023

Sheet 1 of 1



January 22, 2021

**S
D
D
O
T**

Published Date: 1st Qtr. 2023

Sheet 1 of 1

Diagram illustrating the setup for temporary road work. It shows a cross-section of a road with a 'WORK SPACE' indicated by a hatched area. Signs are placed at various distances 'A' from the work space. The signs include: 'ROAD WORK AHEAD' (W20-1), 'BE PREPARED TO STOP' (W3-4), and 'END ROAD WORK' (G20-2, Optional). A 'Buffer Space' is also indicated. A 'Flagger' is shown at the entrance to the work space.

Posted Speed Prior to Work (M.P.H.)	Spacing of Advance Warning Signs (Feet) (A)
0 - 30	200
35 - 40	350
45 - 50	500
55	750
60 - 65	1000

Posted Speed Prior to Work (M.P.H.)	Length of Longitudinal Buffer Space (Feet)
20	115
25	155
30	200
35	250
40	305
45	360
50	425
55	495
60	570
65	645

Buffer space dependent on work site limitations.

Conditions represented are for work that requires closings during daytime hours only.

This application is intended for a planned temporary closing not to exceed 15 to 20 minutes.

January 22, 2021

SDDOT

TEMPORARY ROAD WORK

Published Date: 1st Qtr. 2023

PLATE NUMBER
634.30

Sheet 1 of 1

Diagrams illustrating sign supports for different districts:

- RURAL DISTRICT**: Shows a diamond-shaped sign on a post. The height of the sign is 5' (Min.) to 7' (Min.). The distance from the ground to the top of the sign is 6' to 12'.
- RURAL DISTRICT WITH SUPPLEMENTAL PLATE**: Shows a diamond-shaped sign with a supplemental plate. The height of the sign is 4' (Min.) to 7' (Min.). The distance from the ground to the top of the sign is 6' to 12'. The supplemental plate is 5' (Min.) high. The sign is mounted on a 'Paved Shoulder'.
- URBAN DISTRICT**: Shows a diamond-shaped sign on a post. The height of the sign is 5' (Min.) to 7' (Min.). The distance from the ground to the top of the sign is 2' (Min.). The sign is mounted on a 'Walkway'.
- RURAL DISTRICT 3 DAY MAXIMUM**: Shows a diamond-shaped sign on a post. The height of the sign is 6' (Min.). The sign is mounted on a 'Walkway'.

* If the bottom of supplemental plate is mounted lower than 7 feet above a pedestrian walkway, the supplemental plate should not project more than 4" into the pedestrian facility.

Sign will be level.

January 22, 2021

SDDOT

CRASHWORTHY SIGN SUPPORTS
(Typical Construction Signing)

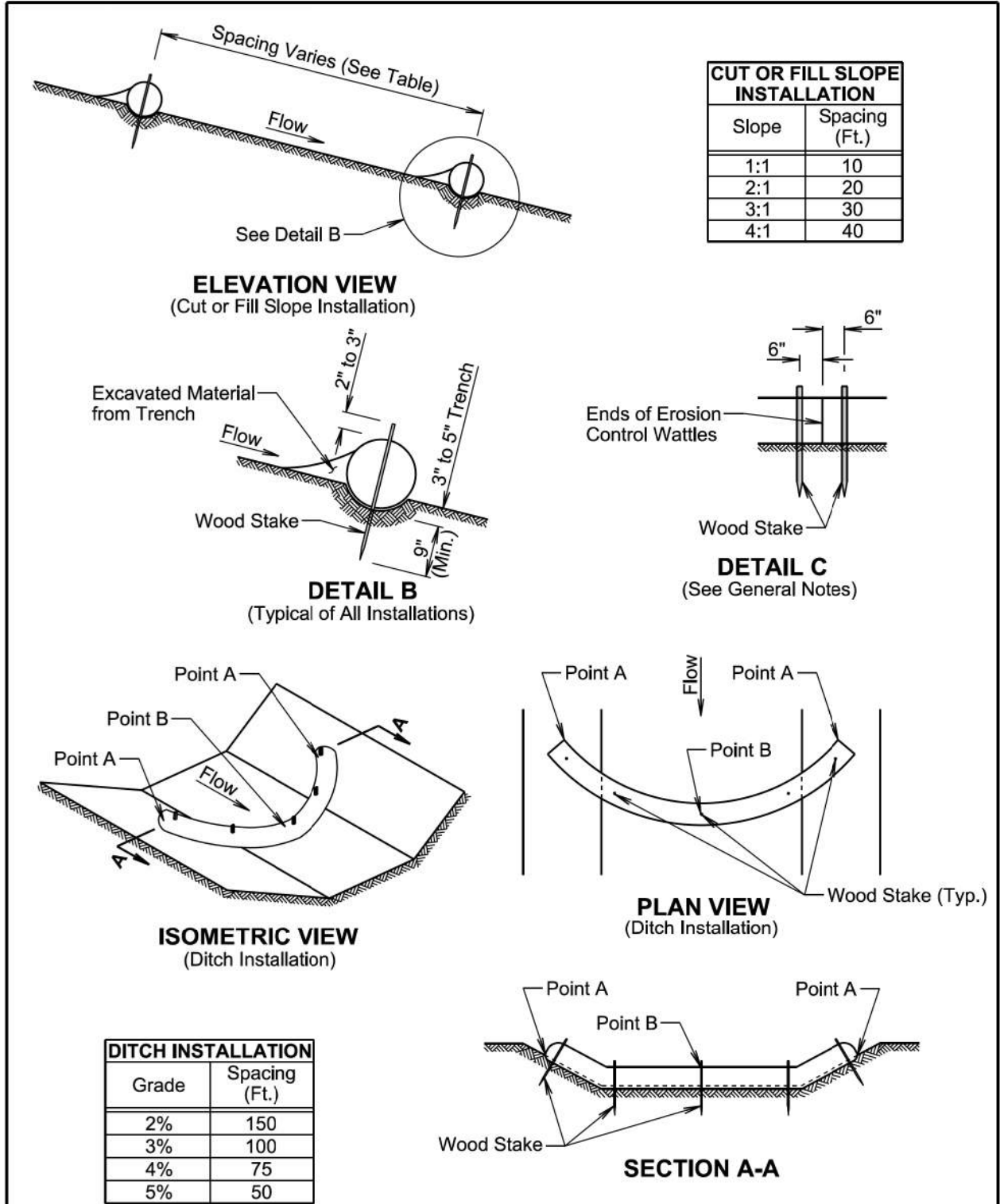
Published Date: 1st Qtr. 2023

PLATE NUMBER
634.85

Sheet 1 of 1

STATE OF SOUTH DAKOTA	PROJECT	SHEET	TOTAL SHEETS
	000N-451		

Plotting Date: 03/06/2023



February 14, 2020

SDDOT	EROSION CONTROL WATTLE	PLATE NUMBER 734.06
		Sheet 1 of 2
		Published Date: 1st Qtr. 2023

GENERAL NOTES:

At cut or fill slope installations, wattles will be installed along the contour and perpendicular to the water flow.

At ditch installations, point A must be higher than point B to ensure that water flows over the wattle and not around the ends.

The Contractor will dig a 3" to 5" trench, install the wattle tightly in the trench so that daylight can not be seen under the wattle, and then compact the soil excavated from the trench against the wattle on the uphill side. See Detail B.

The stakes will be 1"x2" or 2"x2" wood stakes, however, other types of stakes such as rebar may be used only if approved by the Engineer. The stakes will be placed 6" from the ends of the wattles and the spacing of the stakes along the wattles will be 3' to 4'.

Where installing running lengths of wattles, the Contractor will butt the second wattle tightly against the first and will not overlap the ends. See Detail C.

The Contractor and Engineer will inspect the erosion control wattles in accordance with the storm water permit. The Contractor will remove, dispose, or reshape the accumulated sediment when necessary as determined by the Engineer.

Sediment removal, disposal, or necessary shaping will be as directed by the Engineer. All costs for removing accumulated sediment, disposal of sediment, and necessary shaping will be incidental to the contract unit price per cubic yard for "Remove Sediment".

All costs for furnishing and installing the erosion control wattles including labor, equipment, and materials will be incidental to the contract unit price per foot for the corresponding erosion control wattle contract item.

All costs for removing the erosion control wattle from the project including labor, equipment, and materials will be incidental to the contract unit price per foot for "Remove Erosion Control Wattle".

February 14, 2020

SDDOT	EROSION CONTROL WATTLE	PLATE NUMBER 734.06
		Sheet 2 of 2
		Published Date: 1st Qtr. 2023

