

STATE OF	PROJECT	SHEET NO.	TOTAL SHEETS
S.D.	014B-351	1	5

Plotting Date: 03/28/2024

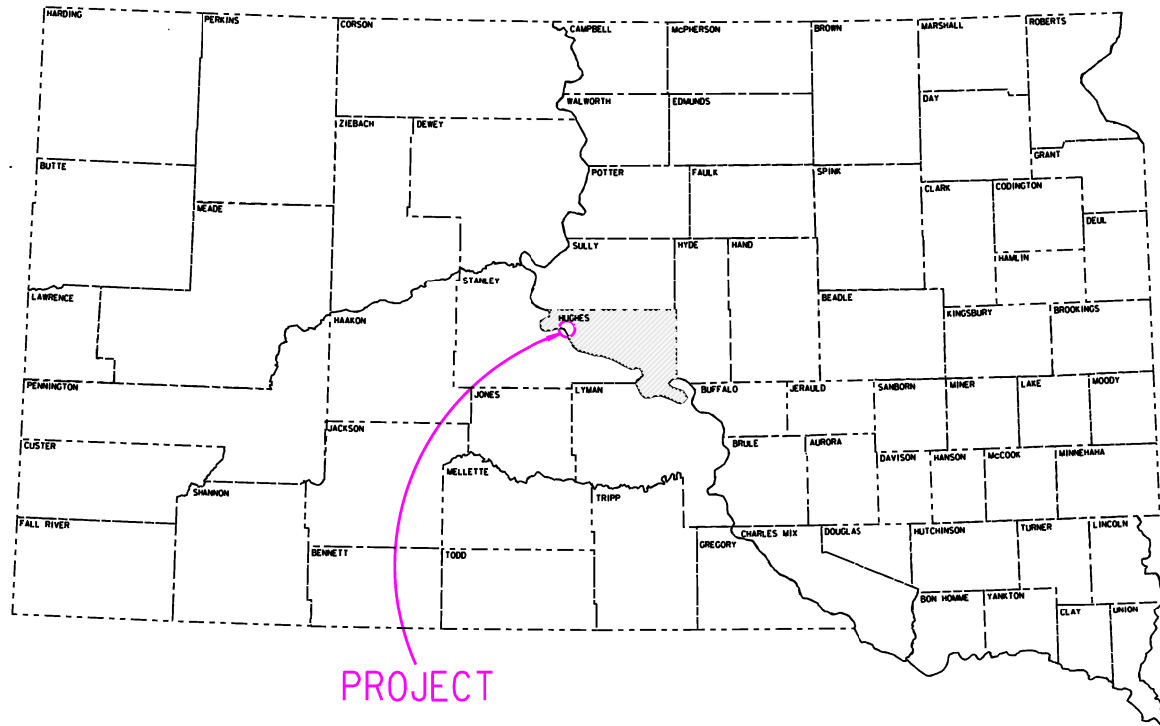
STATE OF SOUTH DAKOTA
DEPARTMENT OF TRANSPORTATION

PLANS FOR PROPOSED
PROJECT 014B-351
US HIGHWAY 14B
HUGHES COUNTY

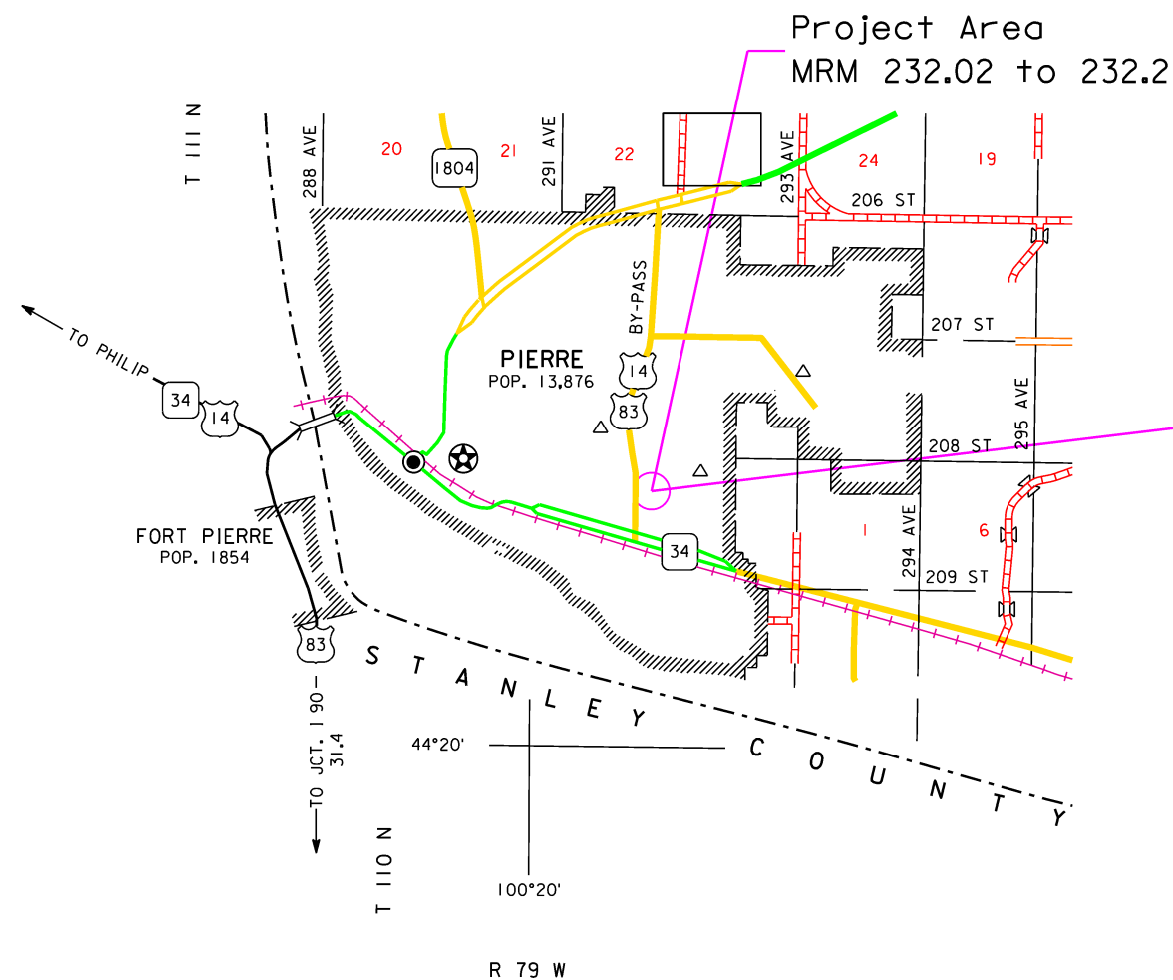
Tree Removal
PCN i7DP

INDEX OF SHEETS

Sheet 1	Title Sheet
Sheets 2 to 3	Estimate of Quantities & Plan Notes
Sheet 4	Original Plan Sheet
Sheet 5	Standard Plates



PROJECT



DESIGN DESIGNATION

2022:	10227
2042:	14717
DHV:	1676
d:	50%
T DHV:	2.2%
T ADT:	4.8%

STORM WATER PERMIT
No Permit Required

PLOT SCALE - 1:10441.4

PLOTTED FROM - TRPR25289

PLOT NAME - 1

FILE - ... \NHUGH17DP-TITLE.DGN

SHEET OF SHEETS

ESTIMATE OF QUANTITIES

BID ITEM NUMBER	ITEM	QUANTITY	UNIT
009E0010	Mobilization	Lump Sum	LS
100E0020	Clear and Grub Tree	301	Each
634E0110	Traffic Control Signs	68.5	SqFt
634E0120	Traffic Control, Miscellaneous	Lump Sum	LS
910E0280	Triclopyr	2.0	Gal

SPECIFICATIONS

Standard Specifications for Roads and Bridges, 2015 Edition and Required Provisions, Supplemental Specifications, and Special Provisions as included in the Proposal.

ENVIRONMENTAL COMMITMENTS

The SDDOT is committed to protecting the environment and uses Environmental Commitments as a communication tool for the Engineer and Contractor to ensure that attention is given to avoid, minimize, and/or mitigate an environmental impact. Environmental commitments to various agencies and the public have been made to secure approval of this project. An agency with permitting authority can delay a project if identified environmental impacts have not been adequately addressed. Unless otherwise designated, the Contractor's primary contact regarding matters associated with these commitments will be the Project Engineer. During construction, the Project Engineer will verify that the Contractor has met Environmental Commitment requirements. These environmental commitments are not subject to change without prior written approval from the SDDOT Environmental Office.

Additional guidance on SDDOT's Environmental Commitments can be accessed through the Environmental Procedures Manual found at: <https://dot.sd.gov/media/documents/EnvironmentalProceduresManual.pdf>

For questions regarding change orders in the field that may have an effect on an Environmental Commitment, the Project Engineer will contact the Environmental Engineer at 605-773-3180 or 605-773-4336 to determine whether an environmental analysis and/or resource agency coordination is necessary.

Once construction is complete, the Project Engineer will review all environmental commitments for the project and document their completion.

COMMITMENT H: WASTE DISPOSAL SITE

The Contractor will furnish a site(s) for the disposal of construction and/or demolition debris generated by this project.

Action Taken/Required:

Construction and/or demolition debris may not be disposed of within the Public ROW.

The waste disposal site(s) will be managed and reclaimed in accordance with the following from the General Permit for Construction/Demolition Debris Disposal Under the South Dakota Waste Management Program issued by the Department of Agriculture and Natural Resources.

The waste disposal site(s) will not be located in a wetland, within 200 feet of surface water, or in an area that adversely affects wildlife, recreation, aesthetic value of an area, or any threatened or endangered species, as approved by the Environmental Office and the Project Engineer.

If the waste disposal site(s) is located such that it is within view of any ROW, the following additional requirements will apply:

1. Construction and/or demolition debris consisting of concrete, asphalt concrete, or other similar materials will be buried in a trench separate from wood debris. The final cover over the construction and/or demolition debris will consist of a minimum of 1 foot of soil capable of supporting vegetation. Waste disposal sites provided outside of the Public ROW will be seeded in accordance with Natural Resources Conservation Service recommendations. The seeding recommendations may be obtained through the appropriate County NRCS Office. The Contractor will control the access to waste disposal sites not within the Public ROW with fences, gates, and placement of a sign or signs at the entrance to the site stating, "No Dumping Allowed".

2. Concrete and asphalt concrete debris may be stockpiled within view of the ROW for a period not to exceed the duration of the project. Prior to project completion, the waste will be removed from view of the ROW or buried, and the waste disposal site reclaimed as noted above.

The above requirements will not apply to waste disposal sites that are covered by an individual solid waste permit as specified in SDCL 34A-6-58, SDCL 34A-6-1.13, and ARSD 74:27:10:06.

Failure to comply with the requirements stated above may result in civil penalties in accordance with South Dakota Solid Waste Law, SDCL 34A-6-1.31.

All costs associated with furnishing waste disposal site(s), disposing of waste, maintaining control of access (fence, gates, and signs), and reclamation of the waste disposal site(s) will be incidental to the various contract items.

DESCRIPTION OF WORK

Work on this project consists of removal and disposal of trees within the drainage/riprap area along US 14B.

SEQUENCE OF WORK

The Contractor will submit a sequence of operations for approval two weeks prior to the preconstruction meeting. If changes to the sequence of operations are proposed during the project, these must be submitted for review a minimum of one week prior to potential implementation. Approval for changes to the sequence of operations will only be allowed when the proposed changes meet with the Department's intent for traffic control and sequencing of the work.

CLEAR AND GRUB TREE

There are approximately 301 trees to be removed and disposed. There are 201 trees/bushes/shrubs from 1 inch to less than 6 inches in diameter and 100 trees 6 inches and above in diameter. The Contractor will remove all trees within this area as determined by the Engineer at the time of removal. The trees will be removed flush with the existing ground. If any holes exist or material displaced by extracting trees through any tree pulling methods they will be filled and the area reshaped to the satisfaction of the Engineer.

All trees and debris will become the property of the Contractor for their disposal. The Contractor will take care to ensure that no wood chips, leaves, or debris will enter the pipe downstream. Any debris, leaves, debris found in the pipe from the Contractor's operations will be removed by the contractor at no expense to the state.

All costs associated with the removal and disposal of trees will be paid for at plans quantity at the contract unit price per each for "CLEAR AND GRUB TREE".

TREE STERILANT

The Contractor will treat cut stumps with Pathfinder II (Triclopyr) or approved equivalent as approved by the Engineer. The Contractor is to use the product neat / undiluted and will add a blue dye to the product before application. The Contractor will spray the top of cut and around the sides to the base to wet. The Contractor will spray or treat the cut stumps within 3- 10 days after cutting. All material, equipment, and labor to complete this work will be incidental to the unit bid item price per gallon for "Triclopyr".

GENERAL TRAFFIC CONTROL

Existing guide, route, informational logo, regulatory, and warning signs will be temporarily reset and maintained during construction. Removing, relocating, covering, salvaging, and resetting of existing traffic control devices, including delineation, will be the responsibility of the Contractor. Cost for this work will be incidental to the contract unit prices for the various items unless otherwise specified in the plans. Any delineators and signs damaged or lost will be replaced by the Contractor at no cost to the State.

All temporary traffic control sign locations will be set in the field by the Contractor and verified by the Engineer prior to installation.

Portable sign supports will not be located on sidewalks, bicycle facilities, or other areas designated for pedestrian or bicycle traffic.

All construction operations will be conducted in the general direction of traffic movement.

If there is a discrepancy between the traffic control plans, standard plates, and the MUTCD, whichever is more stringent will be used, as determined by the Engineer.

Unless otherwise stated in these plans, work will not be allowed during hours of darkness.

Fixed location signing placed more than 4 calendar days prior to the start of construction will be covered or laid down until the time of construction. The covers must be approved by the Engineer prior to installation. The cost of materials, labor, and equipment necessary to complete this work will be incidental to other contract items. No separate payment will be made.

All fixed location signs, sign posts, and breakaway bases will be removed within 7 calendar days following pavement marking.

All haul trucks will be equipped with an additional flashing amber light that is visible from the backside of the haul truck. The costs for the flashing amber lights will be incidental to the various related contract items.

Traffic will be maintained on the driving lanes. Use of the shoulder as a driving lane will not be permitted. Any damage to the shoulder due to rerouted traffic or Contractor's equipment will be repaired at no expense to the Department.

The Contractor will furnish, install, maintain, and remove TRUCK CROSSING (W8-6) signs daily. The TRUCK CROSSING signs will be displayed always when haul vehicles are hauling material. When hauling conditions no longer exist, the signs will be covered or removed from view. The exact number and location will be determined during construction. Payment for additional signs will be based on the contract unit price per square foot for "Traffic Control Signs".

ITEMIZED LIST FOR TRAFFIC CONTROL SIGNS

SIGN CODE	SIGN DESCRIPTION	CONVENTIONAL ROAD			
		NUMBER	SIGN SIZE	SQFT PER SIGN	SQFT
W8-6	TRUCK CROSSING	2	48" x 48"	16.0	32.0
W20-1	ROAD WORK AHEAD	1	48" x 48"	16.0	16.0
W21-5	SHOULDER WORK	1	48" x 48"	16.0	16.0
G20-2	END ROAD WORK	1	36" x 18"	4.5	4.5
CONVENTIONAL ROAD TRAFFIC CONTROL SIGNS SQFT					68.5

PLOT SCALE - 54.218541:1.000000

PLOTTED FROM - TRPR2NT10

Sta. 97+14 - 97' Lt to 98+09 - 123' Lt
Remove 94' - 30" CMP,
Remove 14' of 42"-CMP, &
Remove 3 CMP End Sections

Sta. 97+80 to Sta. 98+10 - 145' Lt
Remove Trees (Clearing)

Sta. 98+26 to Sta. 99+97 - Lt
Remove 370' Fence

Sta. 94+35 - 78' Lt to Sta. 97+14 - 96' Lt
Install 520 Sq. Yds. of Type 2 TRM
Sta. 98+03 - 60' Lt to Sta. 99+26 - 96' Lt
Install 157 Sq. Yds. of Type 2 TRM

Sta. 97+07 - 97.2' Lt to Sta. 98+09 - 123.6' Lt
Install 36" - 102' Amnized CP
downspout 12 Ga. (1 Flared End,
1-7.5° elbow, 1-5° elbow),
29' Liner outside of host pipe

Sta. 97+75 - 162' Lt to Sta. 99+58 - 196' Lt
Install 1045 tons Class B Riprap &
1025 Sq. Yds Type B Drainage Fabric
Sta. 98+12 - 124.5' Lt
Install 84" manhole structure

Sta. 98+18 - 127' Lt to Sta. 98+20 - 132.4' Lt
1'- 88" ROP outlet pipe

STATE OF	PROJECT	SHEET NO.	TOTAL SHEETS
S.D.	NH014B(05)232	4	5

Plotting Date: 10-APR-2012

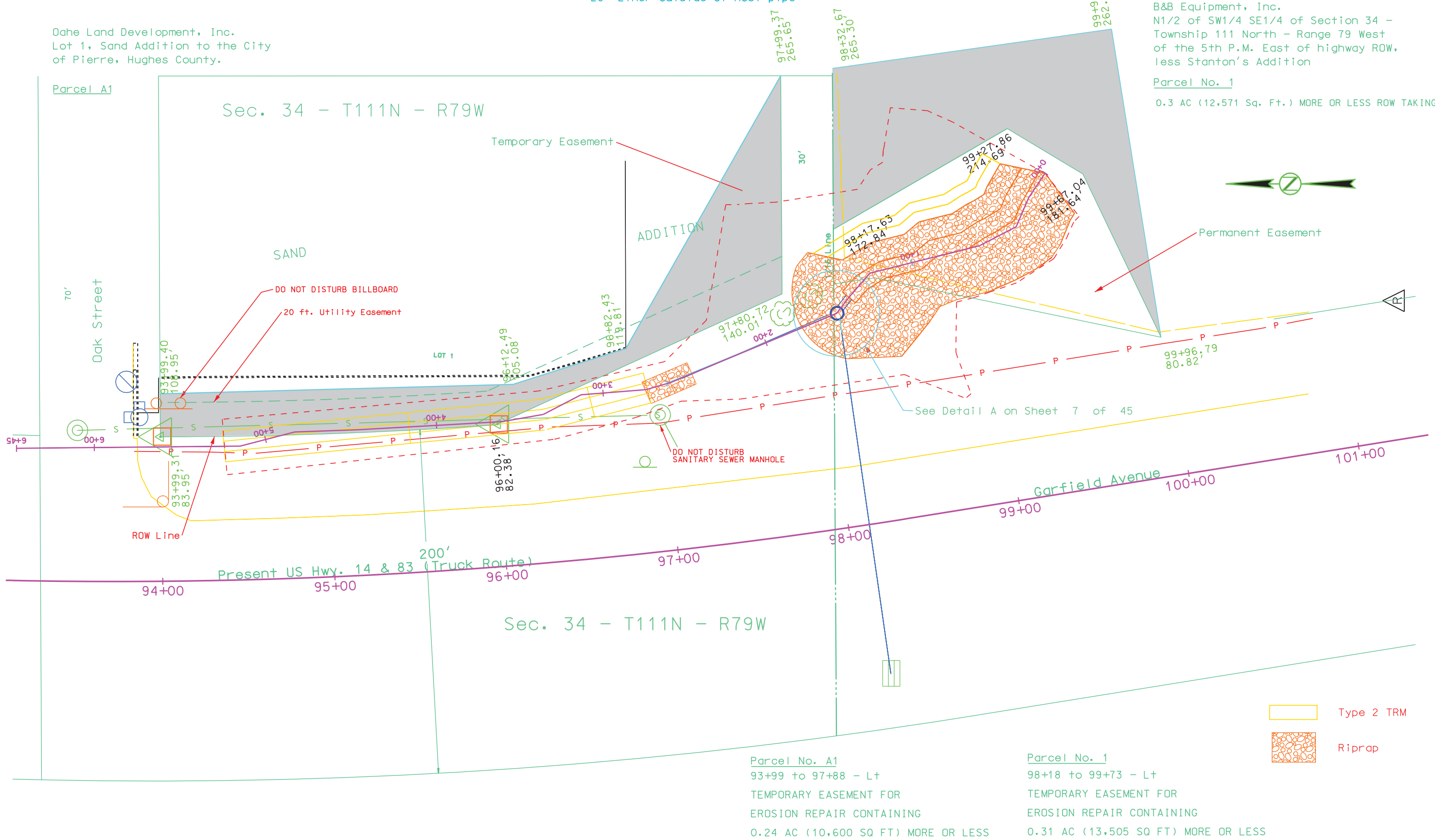
ORIGINAL PLAN SHEET

(FOR INFORMATION ONLY)

Dahe Land Development, Inc.
Lot 1, Sand Addition to the City
of Pierre, Hughes County.

B&B Equipment, Inc.
N1/2 of SW1/4 SE1/4 of Section 34 -
Township 111 North - Range 79 West
of the 5th P.M. East of highway ROW,
less Stanton's Addition

Parcel No. 1
0.3 AC (12,571 Sq. Ft.) MORE OR LESS ROW TAKING



Parcel No. A1
93+99 to 97+88 - Lt
TEMPORARY EASEMENT FOR
EROSION REPAIR CONTAINING
0.24 AC (10,600 SQ FT) MORE OR LESS

Parcel No. 1
98+18 to 99+73 - Lt
TEMPORARY EASEMENT FOR
EROSION REPAIR CONTAINING
0.31 AC (13,505 SQ FT) MORE OR LESS

- Type 2 TRM
- Riprap

PLOT NAME - E03J5

FILE - U:\REGION\PRJ\HUGH03J5\HUGH10JZ\E03J5.DGN

SHEETS OF

Plotting Date: 03/28/2024

The signs illustrated are not required if the work space is behind a barrier, more than 2 feet behind the curb, or 15 feet or more from the edge of any roadway.

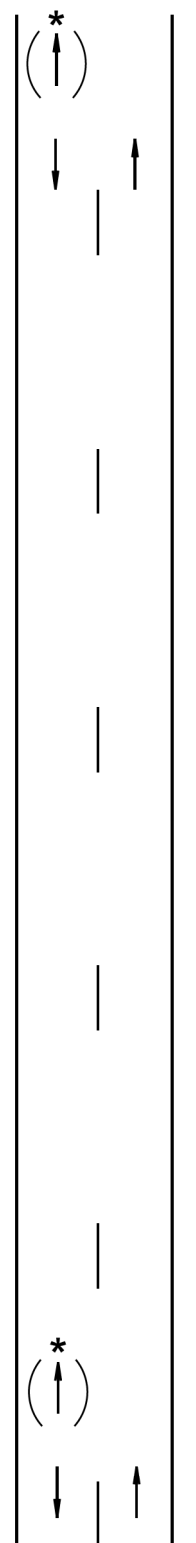
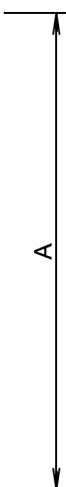
The signs illustrated will be used where there are distracting situations; such as: vehicles parked on shoulder, vehicles accessing the work site via the highway, and equipment traveling on or crossing the roadway to perform work operations.

The ROAD WORK AHEAD sign may be replaced with other appropriate signs, such as the SHOULDER WORK sign. The SHOULDER WORK sign may be used for work adjacent to the shoulder.

* If the work space is on a divided highway, an advance warning sign should also be placed on the left side of the directional roadway.

For short term, short duration, or mobile operations, all signs and channelizing devices may be eliminated if a vehicle with an activated flashing or revolving yellow light is used.

Posted Speed Prior to Work (M.P.H.)	Spacing of Advance Warning Signs (Feet) (A)
0 - 30	200
35 - 40	350
45 - 50	500
55	750
60 - 80	1000



January 22, 2021

Published Date: 2024

**S
D
D
O
T**

WORK BEYOND THE SHOULDER

PLATE NUMBER
634.01

Sheet 1 of 1

PLOT SCALE - 1:200

PLOTTED FROM - IRPR25289

PLOT NAME - 1

FILE - ... \STANDARD PLATES.DGN