

Maintenance of Roadway Lighting and  
Pedestrian Crossing Signal  
MELLETT & TODD COUNTIES

SITE#2  
SD44/SD63 JCT  
Corn Creek



Maintenance of Roadway Lighting and Pedestrian Crossing Signals  
Project 083-392; PCN i7P4  
Mellette & Todd County

**ESTIMATE OF QUANTITIES**

BID ITEM NUMBER	ITEM	QUANTITY	UNIT
009E0197	Mobilization 1	1	Each
009E0198	Mobilization 2	1	Each
009E0199	Mobilization 3	1	Each
110E1540	Remove Luminaire Pole Footing	1	Each
634E0010	Flagging	40.0	Hour
634E0110	Traffic Control Signs	137.0	SqFt
634E0120	Traffic Control, Miscellaneous	1	LS
635E5020	2' Diameter Footing	8.0	Ft
635E5301	Type 1 Electrical Junction Box	1	Each
635E5900	Pedestrian Push Button	1	Each
635E5910	Pedestrian Push Button Pole	1	Each
635E6950	Install Luminaire	1	Each
635E6952	Install Luminaire Arm	1	Each
635E7000	Install Luminaire Pole	1	Each
635E7500	Remove and Reset Luminaire Pole	1	Each
635E8115	1.5" Rigid Conduit, Schedule 40	50	Ft
635E8120	2" Rigid Conduit, Schedule 40	50	Ft
635E8220	2" Rigid Conduit, Schedule 80	50	Ft
635E8320	2" Innerduct, Schedule 40	50	Ft
635E9016	1/C #6 AWG Copper Wire	150	Ft
635E9018	1/C #8 AWG Copper Wire	150	Ft
635E9502	2/C #14 AWG Copper Tray Cable, K2	100	Ft
635E9506	6/C #14 AWG Copper Tray Cable, K2	100	Ft
635E9710	2/C #10 AWG Copper Pole and Bracket Cable	100	Ft
734E0010	Erosion Control	1	LS

**COMPLETION DATE**

The contract will become effective on July 1, 2025, and will expire on June 15, 2026.

**SCOPE OF WORK**

This project consists of repair and maintenance of the highway lighting system and pedestrian push button crossing system at the following locations:

1. **SITE#1** - US 83 from the City of White River south 2 1/2 miles along the existing walk path from MRM 42.06 to 44.26 in Mellette County. [Original Plans & shop Drawings PCN 06L6].
2. **SITE#2** - SD63 City of Parmelee & He Dog School [Original Plans & shop Drawings PCN 09AT].
3. **SITE#3** - SD44/SD63 Jct Corn Creek. [Original Plans & shop Drawings PCN 095G].

In the event a repair call out is made, the Department has numbered the poles as per the original construction set of plans, as referenced in this plan set. The Department will notify the Contractor of the

Maintenance of Roadway Lighting and Pedestrian Crossing Signals  
Project 083-392; PCN i7P4  
Mellette & Todd County

nature of the damage observed requiring repair. Based upon the extent of the damage the Contractors will utilize the appropriate mobilizations to facilitate repairs.

Repair of sites will include use of state furnished materials and then Contractor supplied materials.

All repairs will be made in accordance with the approved shop drawings and original construction plans (see attachments). All repairs will be the same size and type as the existing light or signal structure, or as approved by the Engineer.

Notification to the Contractor will be made by email. May also include contact by phone.

All materials poles, arms, luminaires, etc. that are not able to be reused on the contract will become the property of the Contractor to be disposed of.

#### **UTILITIES**

The Contractor is required to comply with South Dakota Codified Law and Administrative Rule addressing excavation activities. Notification of Utility companies will be in accordance with Section 5.6 of the Specifications. South Dakota One Call phone number is 1-800-781-7474.

#### **GENERAL MAINTENANCE OF TRAFFIC**

The plan quantity for Traffic Control Signs is based on the Contractor mobilizing one time to repair luminaires or the pedestrian crossing signal system. The required number of traffic control devices to construct one work zone for each mobilization. Signs that are reused at different sites during the same mobilization will be paid for only once. Signs that have tabs or are hinged to expedite changing the message will be considered as one sign for payment. Traffic control signs will be measured and paid each time the Contractor is mobilized to make a repair.

Equipment will be confined to the shoulder, or a driving lane closed to traffic.

Work activities will be conducted during daylight hours only. Traffic will be returned to the normal driving lanes during non-working hours. All construction operations will be conducted in the general direction of traffic movement.

All equipment and vehicles entering or exiting the roadway, traveling on the shoulders, traveling at speeds less than 40 MPH between work sites, or working within the right-of-way will be equipped with an activated 360-degree, SAE J845, Class II or higher warning light to warn the traveling public.

Traffic control will be in accordance with Section 634 of the specifications and the plan notes. All traffic control devices are to be in like new condition. Any traffic control device that warrants replacement due to its poor condition or absence will be replaced immediately by the Contractor at the Contractor's expense.

Driving on the walk path adjacent to US83 south of the City of White River with construction vehicles or equipment will not be allowed without approval of the Engineer.

Maintenance of Roadway Lighting and Pedestrian Crossing Signals  
Project 083-392; PCN i7P4  
Mellette & Todd County

**ITEMIZED LIST FOR TRAFFIC CONTROL SIGNS**

SIGN CODE	SIGN DESCRIPTION	CONVENTIONAL ROAD			
		NUMBER	SIGN SIZE	SQFT PER SIGN	SQFT
W20-1	ROAD WORK AHEAD	2	48" x 48"	16.0	32.0
W20-4	ONE LANE ROAD AHEAD	2	48" x 48"	16.0	32.0
W20-7	FLAGGER (symbol)	2	48" x 48"	16.0	32.0
W21-5	SHOULDER WORK	2	48" x 48"	16.0	32.0
G20-2	END ROAD WORK	2	36" x 18"	4.5	9.0
		CONVENTIONAL ROAD TRAFFIC CONTROL SIGNS SQFT			
		137.0			

**GENERAL LIGHTING AND SIGNAL REPAIR**

The Contractor may be required to furnish some items that are not listed in the contract proposal. The Contractor is required to receive prior approval from the Engineer before making these purchases. The Contractor will be paid for invoiced materials as described under the section CONTRACTOR FURNISHED DOT REPLACEMENT MATERIALS in these plans. Installation cost for these additional items will be incidental to the various contract items unless noted in these plans or as agreed to by the Engineer.

**MOBILIZATIONS**

Mobilizations, as described, are the cost of mobilization to make repairs each time the Contractor mobilizes to the any contract project site at the request of the Winner Area Engineer, or his designated representative, to perform lighting and signal repairs on the project.

**Mobilization 1 (SECURE SITE)**

This Mobilization-1 is for mobilization costs to make repairs to secure the safety of the damaged luminaire from the public and to keep functional the remainder of the undamaged system of luminaires or pedestrian crossing signals, as needed by US Electrical Codes.

Reusable pieces will be moved out of the 30 foot clear zone or stored back at the White River Maintenance Yard. If the reusable poles and arms may become buried in snow prior to final repairs being accomplished, then the poles and arm will be required to be hauled and stored at the White River Yard.

This Mobilization-1 does not include permanent repairs. This mobilization will also include evaluation of materials that can be reused or new materials necessary to make permanent repairs. This mobilization will be a onetime payment regardless of the number of repair items needed in its respective call out.

If the Contractor's schedule permits that permanent repair can be made within the response time allocated for Mobilization-1, then only the appropriate Mobilization-2 or Mobilization-3 will be made.

Maintenance of Roadway Lighting and Pedestrian Crossing Signals  
Project 083-392; PCN i7P4  
Mellette & Todd County

**Mobilization 2 (REPAIR SITE)**

Mobilization-2 is a cost of mobilization to complete all permanent repairs. Repairs include, but not limited to removing & hauling damaged or reusable items, repair of anchor bolts and/or footing, setting of poles, installing arms, luminaires, wiring, and other miscellaneous items required to make permanent repairs. Mobilization-2 also covers the setting of temporary poles if required. This mobilization will cover all labor, equipment to make these repairs. This mobilization will be a onetime payment regardless of the number of repair items needed in its respective call out.

**Mobilization 3 (GENERAL SERVICE)**

Mobilization-3 is the mobilization cost to make routine general service repairs to the roadway lighting system or the pedestrian push button system. Repairs may include luminaires, PE's, wiring fixes, LED replacement, PED Poles, PED push Buttons, etc. This mobilization is not for the setting luminaire poles, arms or installing new footings. This mobilization will be a onetime payment regardless of the number of repair items needed in its respective call out.

**RESPONSE TIMES**

**Secure Site – Mobilization 1:** When the Contractor is notified of a damaged luminaire or pedestrian push button pole, the Contractor will have 3 calendar days to secure the site as described in Mobilization-1.

**Repair Site – Mobilization 2:** When the Contractor is notified of a damaged luminaire or pedestrian push button pole, the Contractor will have 4 weeks to make permanent repairs that were called out in the initial notification.

If parts are not available from the DOT White River Yard for repairs, the Contractor will have 5 business days to order the required parts from completing Mobilization-1. The Contractor will be granted 4 weeks beyond the delivery date of the controlling part to make permanent repairs.

**General Service – Mobilization 3:** When general service is required of the luminaire or pedestrian push button systems, the Contractor will have 4 weeks to make repairs from the time of notification.

If parts are not available from the DOT White River Yard for repairs, the Contractor will have 5 business days to order the required parts from completing Mobilization-1 or from notification. The Contractor will be granted 4 weeks beyond the delivery date of the controlling part to make permanent repairs.

Maintenance of Roadway Lighting and Pedestrian Crossing Signals  
Project 083-392; PCN i7P4  
Mellette & Todd County

**DOT FURNISHED REPAIR MATERIALS**

To expedite and facilitate repairs the Department has available the following materials available for repairs at the Department's White River Maintenance Shop located on US83 at 26522 US Hwy 83.

**1. US 83 South of White River – Original Project NH-EM 0083(74)55; PCN 06L6.**

1-15' luminaire pole assembly with anchor bolts, breakaway base, 6' luminaire arm, luminaire, and photoelectric eye.

2-50' luminaire pole assemblies with anchor bolts, breakaway bases, 6' luminaire arms, luminaires, and photoelectrical eye.

In the segment of poles from L50-L59, if the proper length of pole is not available to make a permanent repair and the state supplied 15' pole is available, the Contractor will temporarily install a 15' pole until such time as the correct length pole is available for installation, or as directed by the Engineer. Once, the correct pole length has become available the contractor will be paid an additional Mobilization 2 to make final repairs.

All labor and equipment to temporarily set the DOT furnished 15' luminaire pole assembly will also include the future cost to remove and disassemble this temporary pole set and delivery of the 15' luminaire assembly back to the White River Yard. Payment for this work will be at the unit bid price for REMOVE and RESET LUMINAIRE POLE.

**2. SD63 City of Parmelee & He Dog School – Original Project P -CR 0063(68)28; PCN 09AT**

No additional materials are directly available for this location.

**3. SD44/SD63 Jct Corn Creek – Original Project PH 0044(238)172; PCN 095G**

3-50' luminaire pole assembly with anchor bolts, breakaway bases 8' luminaire arms, luminaires and photoelectric eye.

Maintenance of Roadway Lighting and Pedestrian Crossing Signals  
Project 083-392; PCN i7P4  
Mellette & Todd County

**CONTRACTOR FURNISHED DOT REPLACEMENT MATERIALS**

The Contractor will be required to order replacement parts that are supplied by the Department to replenish the Department's supply within five (5) business days of completing Mobilization-1. The items listed above will be as per approved shop drawings from the initial installation project (see attachments) or as approved by the Engineer.

***Initial Installation Project:***

1. US 83 South of White River -Project NH-EM 0083(74)55; PCN 06L6 in Mellette County in 2022.
2. SD63 City of Parmelee & He Dog School – Project P -CR 0063(68)28; PCN 09AT in Todd County in 2024.
3. SD44/SD63 Jct Corn Creek – Project PH 0044(238)172; PCN 095G in Mellette County in 2024.

Payment for these replacement parts to replenish the Department supply will be paid based upon invoice price and include administration and profit as allowed by the SDDOT Standard Specifications for labor, materials, and equipment.

Maintenance of Roadway Lighting and Pedestrian Crossing Signals  
Project 083-392; PCN i7P4  
Mellette & Todd County

Calculations for payment will be based upon the following, as per the SDDOT Standard Specifications under Section 9:

- A) Total Cost of Materials + Total Cost of Freight to the White River Maintenance Yard
- B) A 15% Material & Administration Cost of "A" above.
- C) Profit will be based upon 10% of "A" above.
- D) Excise Tax @ 2.041% of the sum of "A+B+C" above.
- E) Total Payment will be the sum of "A+B+C+D" above.

The Contractor will submit the original invoice(s) plus a copy of the Materials Billing Sheet worksheet for payment of materials ordered for the project. (See Materials Billing Sheet)

The Contractor will provide an invoice to the Department that will include the following:

Manufactures original invoice with expected delivery date.

Cost of delivery and stockpiling to the White River Maintenance yard

If at no fault of the Contractor the Contractor incurs delays from the manufacture or supplier of any invoiced items to the project, the Contractor will notify and submit to the Department a new updated delivery invoice or statement from the manufacture or supplier. This notification from the manufacture or supplier will state the new delivery date, representative contact, along with pertinent information for verification of the order by the Department.

Once this new delivery invoice has been accepted by the Department, the Contractor will be issued a new completion date for repairs to be made, as determined by the Engineer.

The Contractor will be required to unload any materials in the White River Yard. The Department will not supply equipment or personnel for the loading or unloading of materials.

**LUMINIARE POLE ASSEMBLY & PAYMENTS**

The Contractor will be paid for labor & equipment of various roadway luminaire pole assembly components items on this contract. Payment for each respective item will cover labor and equipment cost for utilizing DOT furnished materials, Contractor supplied materials, the reuse of the existing items, or a combination of the items to make the required permanent repairs on each repair site.

**Install Luminaire** –All labor and equipment costs required to complete luminaire repairs on a damaged luminaire. This work will include the luminaire housing, LED, Photoelectric Eye, and wiring needed. Payment will be at the bid price each for INSTALL LUMINAIRE.

**Install Arm** – All labor and equipment costs required to complete arm repairs on a damaged arm. Payment will be at the unit bid price each for INSTALL ARM.



Maintenance of Roadway Lighting and Pedestrian Crossing Signals  
Project 083-392; PCN i7P4  
Mellette & Todd County

**Install Luminaire Pole** - All labor and equipment costs required to complete pole repairs on a damaged luminaire pole. This work will include the pole and breakaway base. Payment will be at the unit bid price each for INSTALL LUMINAIRE POLE.

Other items required to make payments will be as listed in these plans. The Contractor will notify the Department when items needed for repair are not specifically called out under these plans. These items, as approved by the Engineer, will be paid for as detailed in the section of the plans for CONTRACTOR FURNISHED DOT REPLACEMENT MATERIALS

**PEDESTRIAN CROSSING**

The Contractor will be paid for labor & equipment of various pedestrian crossing components items on this contract. Payment for each respective item will cover labor and equipment cost of Contractor supplied materials, the reuse of the existing items, or a combination of the items to make the required repairs on each repair site.

**Pedestrian Push Button** -All labor and equipment costs required to complete push button repairs on a damaged pedestrian push button assembly. This work will include the housing, push button, and wiring needed. This item will also be for removing and resetting the push button if required to mounted a new pole or base. Payment will be at the bid price each for PEDSTRIAN PUSH BUTTON.

**Pedestrian Push Button Pole**- All labor and equipment costs required to complete luminaire repairs on a damaged pedestrian push button pole. This work will include the base, pole and wiring needed. Payment will be at the bid price each for INSTALL PEDESTRIAN PUSH BUTTON POLE.

Other items required to make payments will be as listed in these plans. The Contractor will notify the Department when items needed for repair are not specifically called out under these plans. These items, as approved by the Engineer, will be paid for as detailed in the section of the plans for CONTRACTOR FURNISHED DOT REPLACEMENT MATERIALS

**FOOTINGS - NEW**

If during Mobilization-1 it is determined that the existing footing for the light pole is damaged beyond repair a new footing will be installed. New replacement footings will be installed as per the original construction plans for each respective route and located in the same location or as determined by the Engineer.

The Contractor will be required to supply steel cages as described in the original constructions plans for each respective site.

State supplied anchor bolts will be available at the White River Maintenance Yard. If anchor bolts are not available from the DOT White River Yard for repairs, the Contractor will have 5 business days to order the required parts from completing Mobilization-1.

Maintenance of Roadway Lighting and Pedestrian Crossing Signals  
Project 083-392; PCN i7P4  
Mellette & Todd County

New concrete footing bases are to be installed a minimum of 2 weeks prior to the expected installation date of the pole on the project as determined from the submitted pole invoice.

Payment for the installation of the new footing will include all labor, equipment, materials needed to complete the installation and be at the established unit bid price per foot for 2' Diameter Footing.

**FOOTINGS - REPAIRABLE**

Footing damaged that is deemed repairable by the Department will be as needed at each specific location. All repair methods & materials will be approved by the Department's Office of Bridge Design. The Contractor may be requested to supply manufacture datasheets, certifications and/or shop drawings for approval for any repairs prior to making repairs.

If parts are not available from the DOT White River Yard for repairs, the Contractor will have 5 business days to order the required parts from the date of the Contractor receives approval of the repairs from the Department. The Contractor will be granted 4 weeks beyond the delivery date of the controlling part to make permanent repairs.

Due to footing repairs each being unique in nature, payment for this work will be negotiated and agreed to by the Contractor and the Department for each respective site prior to the beginning of the repair work. This agreed to work will be added to the contract by construction change order.

**ACCESS TO THE WHITE RIVER YARD**

The White River Yard is typically open as follows:

April thru September are 7am-5:30 pm Central, Monday -Thursday.

October thru March are 8am-4:30 pm Central, Monday – Friday.

If access is needed other than at these listed times, the Contractor will need to coordinate with the Maintenance Supervisor Gregg Ulmer @ 605.842.0810. Access to the yard will be at the Department's discretion.

**PROGRESS PAYMENTS**

At the preconstruction meeting the Contractor will be given a Roadway Lighting Billing Sheet to record the work done at the repair areas. This sheet will be used by the Contractor to record the location of each repair site and the actual materials and quantities required to make repairs.

Progress payments will be processed upon receipt of the Roadway Lighting Billing Sheet from the Contractor for repairs completed.

Maintenance of Roadway Lighting and Pedestrian Crossing Signals  
Project 083-392; PCN i7P4  
Mellette & Todd County

**EROSION CONTROL**

Areas disturbed because of work necessary under this contract will be reshaped and/or restored to the satisfaction of the Engineer.

The estimated area requiring erosion control is 100 square feet. All costs for the erosion control work for furnishing, placing, and maintaining erosion control including equipment, labor, seeding, and mulching will be incidental to the contract lump sum price for "Erosion Control".

The limits of erosion control work will be determined by the Engineer during construction.

**Seeding**

Slopes and berms disturbed will be leveled and excess material removed. Area will be tilled to the minimum depth of three inches and seeded with Intermediate Wheatgrass (Oahe) at the rate of one-half (1/2) pound "Pure Live Seed" per 1000 square feet. The seed will be noxious weed free. Cost for reshaping, leveling, removal of excess material, tilling, and seeding disturbed areas on the slopes and berms will be incidental to the contract unit price for the various items.

Hand seeding and mulching may be approved by the Engineer.

ATTACH MATERIAL

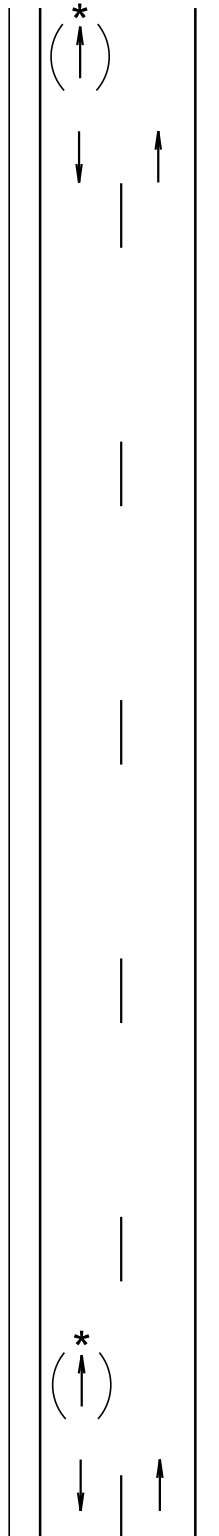
The signs illustrated are not required if the work space is behind a barrier, more than 2 feet behind the curb, or 15 feet or more from the edge of any roadway.

The signs illustrated will be used where there are distracting situations; such as: vehicles parked on shoulder, vehicles accessing the work site via the highway, and equipment traveling on or crossing the roadway to perform work operations.

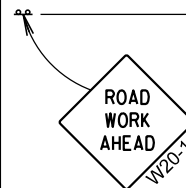
The ROAD WORK AHEAD sign may be replaced with other appropriate signs, such as the SHOULDER WORK sign. The SHOULDER WORK sign may be used for work adjacent to the shoulder.

\* If the work space is on a divided highway, an advance warning sign should also be placed on the left side of the directional roadway.

For short term, short duration, or mobile operations, all signs and channelizing devices may be eliminated if a vehicle with an activated flashing or revolving yellow light is used.



Posted Speed Prior to Work (M.P.H.)	Spacing of Advance Warning Signs (Feet) (A)
0 - 30	200
35 - 40	350
45 - 50	500
55	750
60 - 80	1000



January 22, 2021

Published Date: 2025

**S  
D  
D  
O  
T**

**WORK BEYOND THE SHOULDER**

PLATE NUMBER  
**634.01**

Sheet 1 of 1

Posted Speed Prior to Work (M.P.H.)	Spacing of Advance Warning Signs (Feet) (A)	Taper Length (Feet) (L)	Spacing of Channelizing Devices (Feet) (G)
0 - 30	200	180	25
35 - 40	350	320	25
45	500	600	25
50	500	600	50
55	750	660	50
60 - 65	1000	780	50

■ Channelizing Device

**END ROAD WORK**  
G20-2

The channelizing devices will be drums or 42" cones if traffic control must remain overnight.

For short duration operations (1 hour or less) all channelizing devices may be eliminated if a vehicle with an activated flashing or revolving yellow light is used.

Worker signs (W21-1 or W21-1a) may be used instead of SHOULDER WORK signs.

A SHOULDER WORK sign should be placed on the left side of a divided or one-way roadway only if the left shoulder is affected.

The SHOULDER WORK sign on an intersecting roadway is not required if drivers emerging from that roadway will encounter another advance warning sign before they reach a work activity area.

**WORK SPACE**

*Published Date: 2025*

**S  
D  
D  
O  
T**

**WORK ON SHOULDERS**

January 22, 2021

**PLATE NUMBER**  
**634.03**

Sheet 1 of 1

\*In situations where multiple work locations in a limited distance make it practical to place stationary signs, the distance between the advance warning sign and the work should not exceed 5 miles.

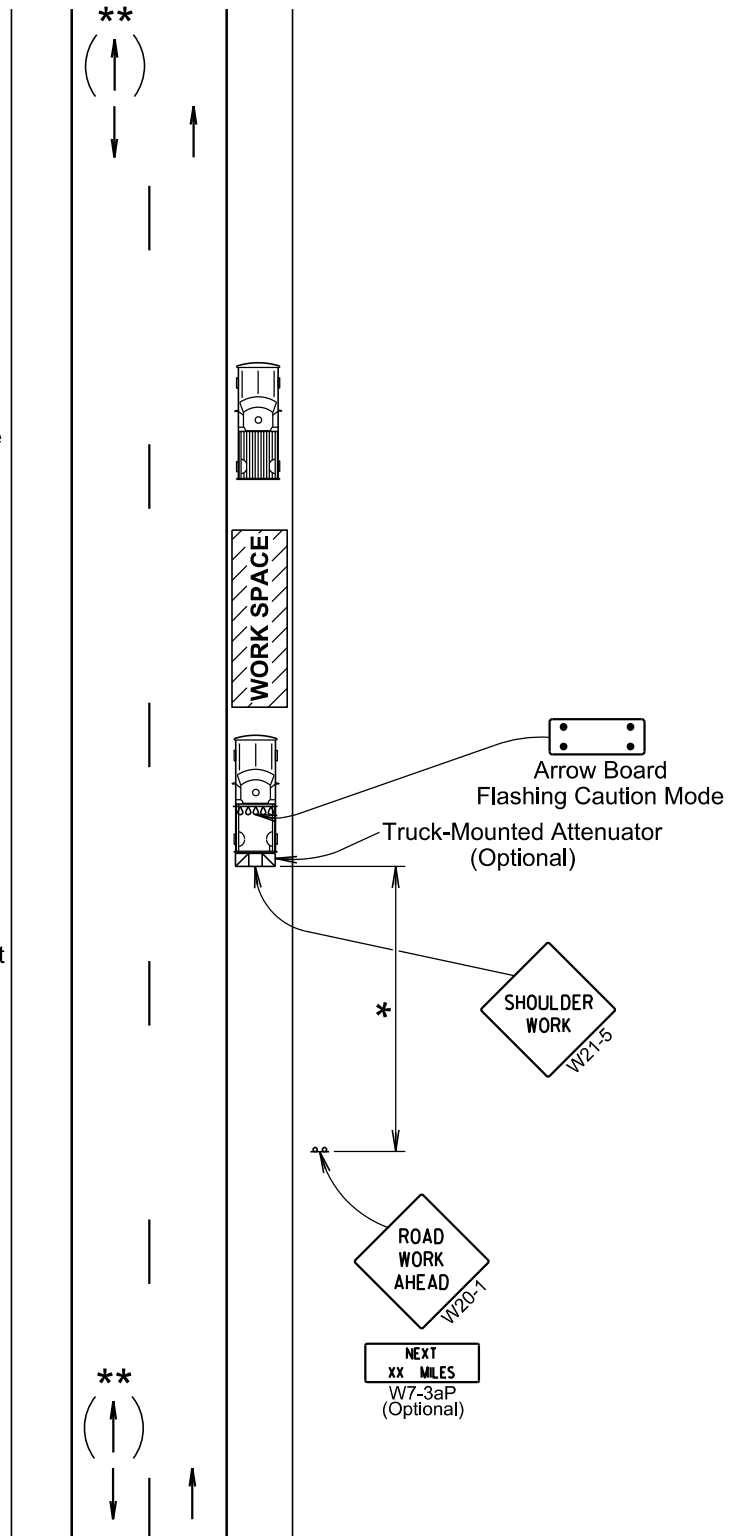
The ROAD WORK NEXT xx MILES sign may be used instead of the ROAD WORK AHEAD sign if the work locations occur over a distance of more than 2 miles.

Arrow board is required for intermittently and continuously moving mobile operations when work exceeds 1 hour.

\*\*If the work space is on a divided highway, an advance warning sign should also be placed on the left side of the directional roadway.

In situations where the distance between the advance warning signs and the work is 2 miles to 5 miles, a Supplemental Distance plaque should be used with the ROAD WORK AHEAD sign.

All costs associated with the traffic control for mobile operation including signs, arrow boards and equipment will be incidental to the contract lump sum price for "Traffic Control, Miscellaneous".



January 22, 2021

Published Date: 2025

**S  
D  
D  
O  
T**

## MOBILE OPERATIONS ON SHOULDERS

PLATE NUMBER  
634.04

Sheet 1 of 1

Posted Speed Prior to Work (M.P.H.)	Spacing of Advance Warning Signs (Feet) (A)	Spacing of Channelizing Devices (Feet) (G)
0 - 30	200	25
35 - 40	350	25
45	500	25
50	500	50
55	750	50
60 - 65	1000	50

- Flagger
- Channelizing Device

For low-volume traffic situations with short work zones on straight roadways where the flagger is visible to road users approaching from both directions, a single flagger may be used.

The ROAD WORK AHEAD and the END ROAD WORK signs may be omitted for short duration operations (1 hour or less).

For tack and/or flush seal operations, when flaggers are not being used, the FRESH OIL sign (W21-2) will be displayed in advance of the liquid asphalt areas.

Flashing warning lights and/or flags may be used to call attention to the advance warning signs.

The channelizing devices will be drums or 42" cones.

Channelizing devices are not required along the centerline adjacent to work area when pilot cars are utilized for escorting traffic through the work area.

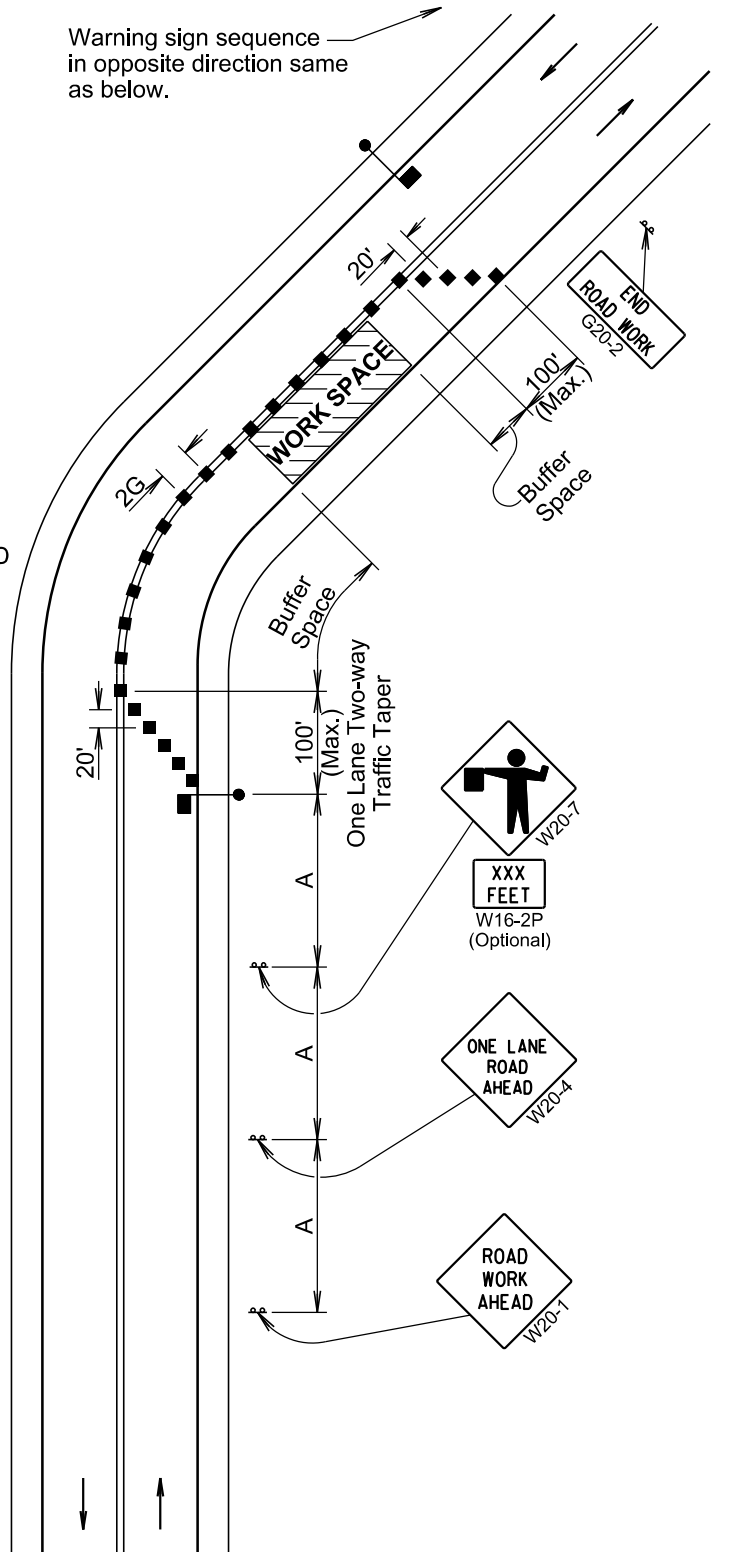
G20-2  
END ROAD WORK

Channelizing devices and flaggers will be used at intersecting roads to control intersecting road traffic as required.

The buffer space should be extended so that the two-way traffic taper is placed before a horizontal or vertical curve to provide adequate sight distance for the flagger and queue of stopped vehicles.

The length of A may be adjusted to fit field conditions.

Warning sign sequence in opposite direction same as below.



January 22, 2021

Published Date: 2025

S  
D  
D  
O  
T

LANE CLOSURE WITH FLAGGER PROVIDED

PLATE NUMBER  
634.23

Sheet 1 of 1