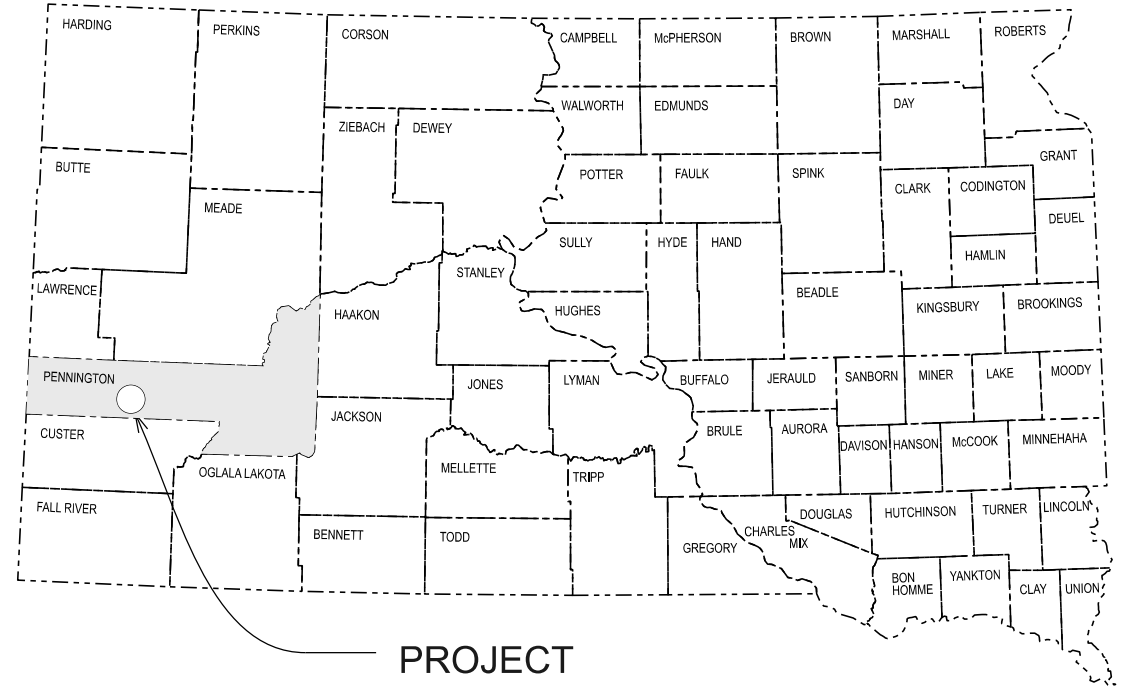


STATE OF SOUTH DAKOTA  
DEPARTMENT OF TRANSPORTATION  
PLANS FOR PROPOSED  
**PROJECT 016-491**  
**US HIGHWAY 16**  
**PENNINGTON COUNTY**  
HIGH FRICTION SURFACE TREATMENT  
AT SPOT LOCATIONS  
PCN i7pk

**INDEX OF SHEETS**

Sheet 1:	Title Sheet
Sheet 2 - 4:	Estimate of Quantities and Plan Notes
Sheet 5 - 8:	Traffic Control Details
Sheet 9 - 21:	Structure Details
Sheet 22 - 23:	Standard Plates

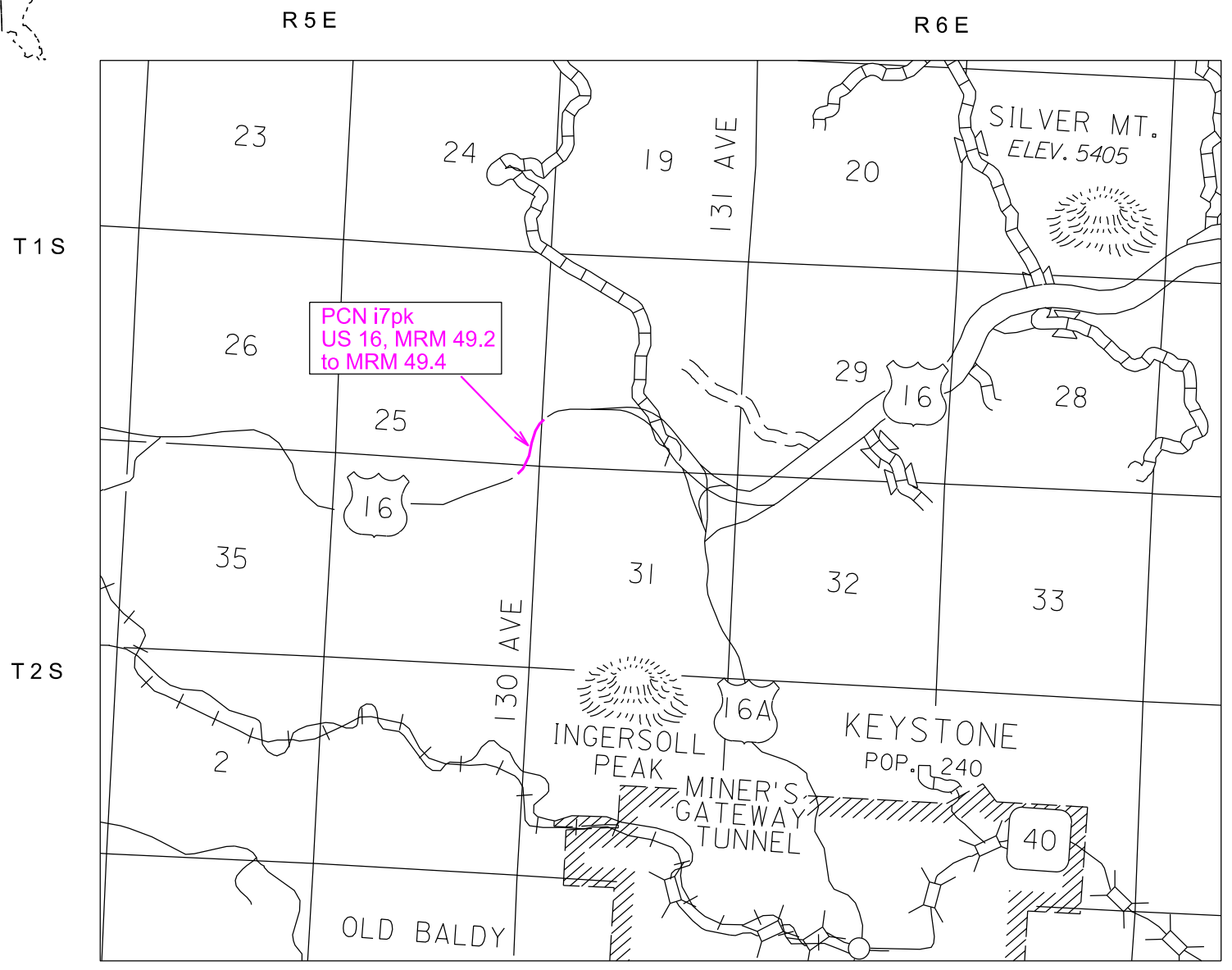


PROJECT

**DESIGN DESIGNATION**

ADT (2023)	6231
ADT (2043)	9826
DHV	1609
D	51%
T DHV	2.4%
T ADT	5.3%
V	65 MPH

**STORM WATER PERMIT**  
No Permit Required



## ESTIMATE OF QUANTITIES

BID ITEM NUMBER	ITEM	QUANTITY	UNIT
009E0010	Mobilization	Lump Sum	LS
633E1220	High Build Waterborne Pavement Marking Paint, 4" White	645	Ft
633E5100	Grooving for Durable Pavement Marking, 4"	645	Ft
634E0010	Flagging	100.0	Hour
634E0110	Traffic Control Signs	137.0	SqFt
634E0120	Traffic Control, Miscellaneous	Lump Sum	LS
900E1250	High Friction Surface Treatment	1,075.0	SqYd
900E1256	Abrasive Blasting of PCC Pavement	1,075.0	SqYd

## SPECIFICATIONS

Standard Specifications for Roads and Bridges, 2015 Edition and Required Provisions, Supplemental Specifications, and Special Provisions as included in the Proposal.

## ENVIRONMENTAL COMMITMENTS

The SDDOT is committed to protecting the environment and uses Environmental Commitments as a communication tool for the Engineer and Contractor to ensure that attention is given to avoid, minimize, and/or mitigate an environmental impact. Environmental commitments to various agencies and the public have been made to secure approval of this project. An agency with permitting authority can delay a project if identified environmental impacts have not been adequately addressed. Unless otherwise designated, the Contractor's primary contact regarding matters associated with these commitments will be the Project Engineer. During construction, the Project Engineer will verify that the Contractor has met Environmental Commitment requirements. These environmental commitments are not subject to change without prior written approval from the SDDOT Environmental Office.

Additional guidance on SDDOT's Environmental Commitments can be accessed through the Environmental Procedures Manual found at: <<https://dot.sd.gov/media/documents/EnvironmentalProceduresManual.pdf>>

For questions regarding change orders in the field that may have an effect on an Environmental Commitment, the Project Engineer will contact the Environmental Engineer at 605-773-3180 or 605-773-4336 to determine whether an environmental analysis and/or resource agency coordination is necessary.

Once construction is complete, the Project Engineer will review all environmental commitments for the project and document their completion.

### **COMMITMENT B: FEDERALLY THREATENED, ENDANGERED, AND PROTECTED SPECIES**

#### **COMMITMENT B2: WHOOPING CRANE**

The Whooping Crane is a spring and fall migratory bird in South Dakota that is about 5 feet tall and typically stops on wetlands, rivers, and agricultural lands along their migration route. An adult Whooping Crane is white with a red crown and a long, dark, pointed bill. Immature Whooping Cranes are cinnamon brown. While in flight, their long necks are kept straight and their long dark legs trail behind. Adult Whooping Cranes' black wing tips are visible during flight.

#### **Action Taken/Required:**

Harassment or other measures to cause the Whooping Crane to leave the site is a violation of the Endangered Species Act. If a Whooping Crane is sighted roosting in the vicinity of the project, borrow pits, or staging areas associated with the project, cease construction activities in the affected area until the Whooping Crane departs and immediately contact the Project Engineer. The Project Engineer will contact the Environmental Office so that the sighting can be reported to USFWS.

### **COMMITMENT E: STORM WATER**

Construction activities constitute less than 1 acre of disturbance.

#### **Action Taken/Required:**

At a minimum and regardless of project size, appropriate erosion and sediment control measures must be installed to control the discharge of pollutants from the construction site.

STATE OF SOUTH DAKOTA	PROJECT	SECTION	SHEET
	016-491	non	2/7

### **COMMITMENT H: WASTE DISPOSAL SITE**

The Contractor will furnish a site(s) for the disposal of construction and/or demolition debris generated by this project.

#### **Action Taken/Required:**

Construction and/or demolition debris may not be disposed of within the Public ROW.

The waste disposal site(s) will be managed and reclaimed in accordance with the following from the General Permit for Construction/Demolition Debris Disposal Under the South Dakota Waste Management Program issued by the Department of Agriculture and Natural Resources.

The waste disposal site(s) will not be located in a wetland, within 200 feet of surface water, or in an area that adversely affects wildlife, recreation, aesthetic value of an area, or any threatened or endangered species, as approved by the Environmental Office and the Project Engineer.

If the waste disposal site(s) is located such that it is within view of any ROW, the following additional requirements will apply:

1. Construction and/or demolition debris consisting of concrete, asphalt concrete, or other similar materials will be buried in a trench separate from wood debris. The final cover over the construction and/or demolition debris will consist of a minimum of 1 foot of soil capable of supporting vegetation. Waste disposal sites provided outside of the Public ROW will be seeded in accordance with Natural Resources Conservation Service recommendations. The seeding recommendations may be obtained through the appropriate County NRCS Office. The Contractor will control the access to waste disposal sites not within the Public ROW with fences, gates, and placement of a sign or signs at the entrance to the site stating, "No Dumping Allowed".
2. Concrete and asphalt concrete debris may be stockpiled within view of the ROW for a period not to exceed the duration of the project. Prior to project completion, the waste will be removed from view of the ROW or buried, and the waste disposal site reclaimed as noted above.

The above requirements will not apply to waste disposal sites that are covered by an individual solid waste permit as specified in SDCL 34A-6-58, SDCL 34A-6-1.13, and ARSD 74:27:10:06. Failure to comply with the requirements stated above may result in civil penalties in accordance with South Dakota Solid Waste Law, SDCL 34A-6-1.31.

All costs associated with furnishing waste disposal site(s), disposing of waste, maintaining control of access (fence, gates, and signs), and reclamation of the waste disposal site(s) will be incidental to the various contract items.

**COMMITMENT I: HISTORICAL PRESERVATION OFFICE CLEARANCES**

The SDDOT has obtained concurrence with the State Historical Preservation Office (SHPO or THPO) for all work included within the project limits and all department designated sources and designated option material sources, stockpile sites, storage areas, and waste sites provided within the plans.

**Action Taken/Required:**

All earth disturbing activities not designated within the plans require a cultural resource review prior to scheduling the pre-construction meeting. This work includes but is not limited to: Contractor furnished material sources, material processing sites, stockpile sites, storage areas, plant sites, and waste areas.

The Contractor will arrange and pay for a record search and when necessary, a cultural resource survey. The Contractor has the option to contact the state Archaeological Research Center (ARC) at 605-394-1936 or another qualified archaeologist, to obtain either a records search or a cultural resources survey. A record search might be sufficient for review if the site was previously surveyed; however, a cultural resources survey may need to be conducted by a qualified archaeologist.

The Contractor will provide ARC with the following: a topographical map or aerial view in which the site is clearly outlined, site dimensions, project number, and PCN. If applicable, provide evidence that the site has been previously disturbed by farming, mining, or construction activities with a landowner statement that artifacts have not been found on the site.

The Contractor will submit the cultural resources survey report to SDDOT Environmental Office, 700 East Broadway Avenue, Pierre, SD 57501-2586. SDDOT will submit the information to the appropriate SHPO/THPO. Allow **30 Days** from the date this information is submitted to the Environmental Engineer for SHPO/THPO review.

In the event of an inadvertent discovery of human remains, funerary objects, or if evidence of cultural resources is identified during project construction activities, then such activities within 100 feet of the inadvertent discovery will immediately cease and the Project Engineer will be immediately notified. The Project Engineer will contact the SDDOT Environmental Office, who will contact the appropriate SHPO/THPO within 48 hours of the discovery to determine an appropriate course of action.

SHPO/THPO review does not relieve the Contractor of the responsibility for obtaining any additional permits and clearances for Contractor furnished material sources, material processing sites, stockpile sites, storage areas, plant sites, and waste areas that affect wetlands, threatened and endangered species, or waterways. The Contractor will not utilize a site known or suspected of having contaminated soil or water. The Contractor will provide the required permits and clearances to the Project Engineer at the preconstruction meeting.

**TABLE OF MATERIAL QUANTITIES**

Highway	Length (ft)	Width (ft)	High Friction Surface Treatment (SqYd)	Abrasive Blasting of PCC Pavement (SqYd)
US16, Westbound	128	15	213.3	213.3
	4	15	6.7	6.7
	4	15	6.7	6.7
SD34	19	15	31.7	31.7
Additional Quantities	174	15	290.0	290.0
	316	15	526.7	526.7
		<b>Totals</b>	<b>1075.0</b>	<b>1075.0</b>

**HIGH BUILD WATERBORNE PAVEMENT MARKING PAINT**

All materials will be applied as per manufacturer's recommendations. High build waterborne pavement marking paint will conform to the supplemental specifications for Section 980.1 B.

Reflective media will consist of glass beads.

**RATES OF MATERIALS FOR HIGH BUILD WATERBORNE PAVEMENT MARKING PAINT**

Solid 4" line = 27.8 Gals/Mile  
Dashed 4" line = 7.6 Gal/Mile  
Glass Beads = 8 Lbs/Gal.

All cost for materials, labor and equipment necessary to furnish and install the pavement markings will be incidental to the contract unit price for the respective High Build Waterborne Pavement Marking Paint items.

**CENTERLINE RUMBLE STRIPES**

Centerline rumble stripes will be protected from the high friction surface treatment and will not be disturbed during construction

**GROOVING FOR HIGH BUILD WATERBORNE PAVEMENT MARKING PAINT**

The Contractor will be grooving a wider groove for the 4" markings being laid down on this project. The Contractor will conduct grooving in a way so as not to diminish the standard and current width of the lanes.

The Contractor will establish a positive means for the removal of the grinding and/or grooving residue. Residue from dry grooving will be vacuumed.

Solid residue will be removed from the pavement surfaces before being blown by traffic action or wind. The Contractor will conduct this work to control and minimize airborne dust and similar debris that may become a hazard to motor vehicle operation or nuisance to property owners. Residue from wet grooving will not be permitted to flow across lanes being used by public traffic or into gutter or drainage facilities. Residue, whether in solid or slurry form, will be disposed of in a manner that will prevent it from reaching any waterway in a concentrated state. All costs for removal of grinding and/or grooving residue will be included in the contract unit price per foot for "Grooving for Durable Pavement Marking" contract item.

Unless otherwise specified in the plans, the Contractor will groove the surface for High Build Waterborne Pavement Marking Paint as specified in these plans and as per the manufacturer's instructions.

The grooving will be completed within the following tolerances:

Description	Specification	Tolerance
Depth of Groove	Marking Thickness <sup>1</sup> + 15 mils	+ 5 mils
Width of Groove 4" Marking	5 to 6 inches	
Length of Skip Lines <sup>2</sup>	10 foot 6 inches	± 3 inch
Tapers at ends of lines	6 to 9 inches	
Between Double Lines	4 inches	± 1/2 inch

<sup>1</sup> Marking thickness will include the thickness of marking material and reflective media.

<sup>2</sup> Additional length may be required as specified in the plans.

The equipment will be capable of the following:

- Grooving the total width of the groove in one pass or uniform depths with multiple passes.
- Grooving without causing damage to the pavement joints or joint sealant material.
- Provide uniform alignment and depth.
- Moving continuously to permit a mobile traffic work operation.

If damage occurs, including, but not limited to, joints, joint sealant material, and backer rod, the grooving operation will be stopped and modifications will be made to the grooving operation to prevent further damage. The Contractor will be required to use specially prepared circular diamond blade cutting heads to prevent damage at the joints. Damage caused will be repaired or replaced by the Contractor, as directed by the Engineer. No additional payment will be made for the repair work or any reapplication of the pavement marking in the area of the repair.

**TABLE OF PAVEMENT MARKING QUANTITIES**

Highway	Length (ft)	High Build Waterborne Pavement Marking Paint, 4" White (ft)	Grooving for Durable Pavement Marking, 4" (ft)
US16, Westbound	128	128.0	128.0
US16, Westbound	4	4.0	4.0
US16, Westbound	4	4.0	4.0
US16, Westbound	19	19.0	19.0
US16, Westbound	174	174.0	174.0
US16, Westbound	316	316.0	316.0
<b>Totals</b>		<b>645.0</b>	<b>645.0</b>

**GENERAL TRAFFIC CONTROL**

Existing guide, route, informational logo, regulatory, and warning signs will be temporarily reset and maintained during construction. Removing, relocating, covering, salvaging, and resetting of existing traffic control devices, including delineation, will be the responsibility of the Contractor. Cost for this work will be incidental to the contract unit prices for the various items unless otherwise specified in the plans. Any delineators and signs damaged or lost will be replaced by the Contractor at no cost to the State.

All temporary traffic control sign locations will be set in the field by the Contractor and verified by the Engineer prior to installation.

All construction operations will be conducted in the general direction of traffic movement.

If there is a discrepancy between the traffic control plans, standard plates, and the MUTCD, whichever is more stringent will be used, as determined by the Engineer.

Unless otherwise stated in these plans, work will not be allowed during hours of darkness.

Fixed location signing placed more than 4 calendar days prior to the start of construction will be covered or laid down until the time of construction. The covers must be approved by the Engineer prior to installation. The cost of materials, labor, and equipment necessary to complete this work will be incidental to other contract items. No separate payment will be made.

All fixed location signs, sign posts, and breakaway bases will be removed within 7 calendar days following pavement marking.

All haul trucks will be equipped with an additional flashing amber light that is visible from the backside of the haul truck. The costs for the flashing amber lights will be incidental to the various related contract items.

Traffic will be maintained on the driving lanes. Use of the shoulder as a driving lane will not be permitted. Any damage to the shoulder due to rerouted traffic or Contractor's equipment will be repaired at no expense to the Department.

A mobile work operation will be allowed provided the rumble strip or rumble stripe grooving, flush sealing, and pavement marking can be completed satisfactorily by a continuously moving work operation. A mobile work operation will require approval by the Engineer.

**FLAGGING**

Operations will be conducted so that the traveling public will not have to wait longer than 15 minutes.

It is required that the flaggers be able to communicate with one another. If an emergency vehicle needs to pass through the project, the Contractor will be required to expedite traffic movement. All costs associated with this will be incidental to the contract unit price per hour for "Flagging".

**INVENTORY OF TRAFFIC CONTROL DEVICES**

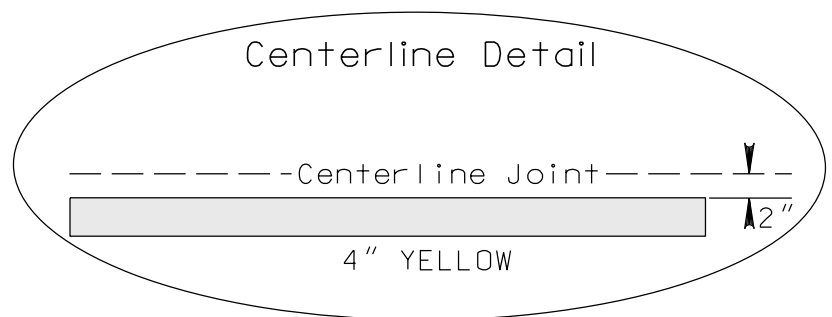
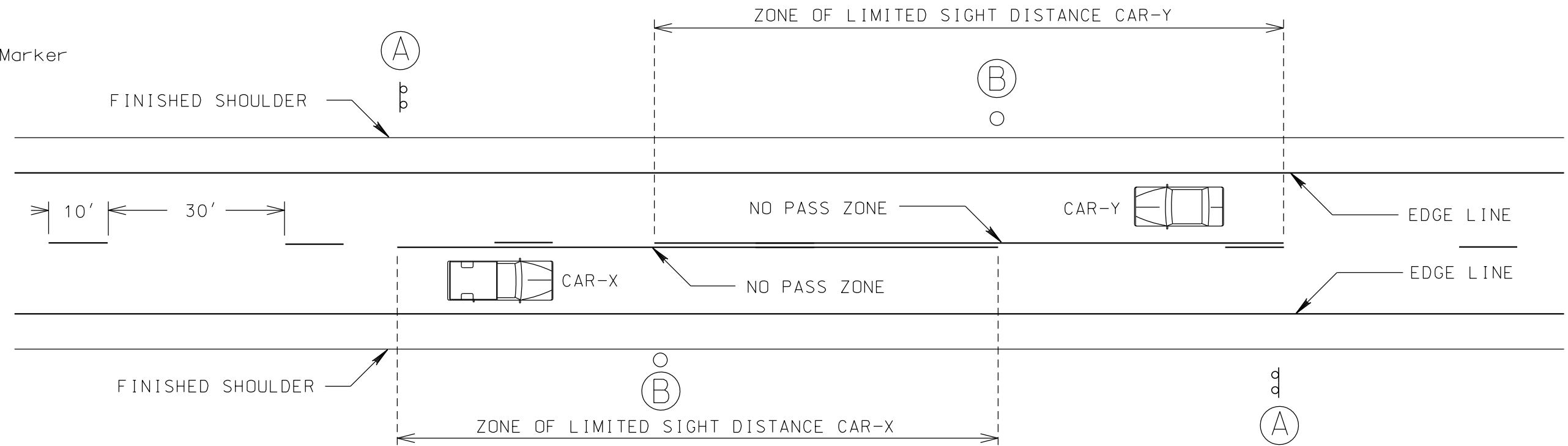
		CONVENTIONAL ROAD			
SIGN CODE	SIGN DESCRIPTION	NUMBER	SIGN SIZE	SQFT PER SIGN	SQFT
W3-4	BE PREPARED TO STOP	2	48" x 48"	16.0	32.0
W20-1	ROAD WORK AHEAD	2	48" x 48"	16.0	32.0
W20-4	ONE LANE ROAD AHEAD	2	48" x 48"	16.0	32.0
W20-7	FLAGGER (symbol)	2	48" x 48"	16.0	32.0
G20-2	END ROAD WORK	2	36" x 18"	4.5	9.0
		<b>CONVENTIONAL ROAD TRAFFIC CONTROL SIGNS SQFT 137.0</b>			

# TYPICAL PAVEMENT MARKING LAYOUT

SD DOT	PROJECT	SECTION	SHEET
	016-491	non	5/7
Plotting Date: 08/27/2024			

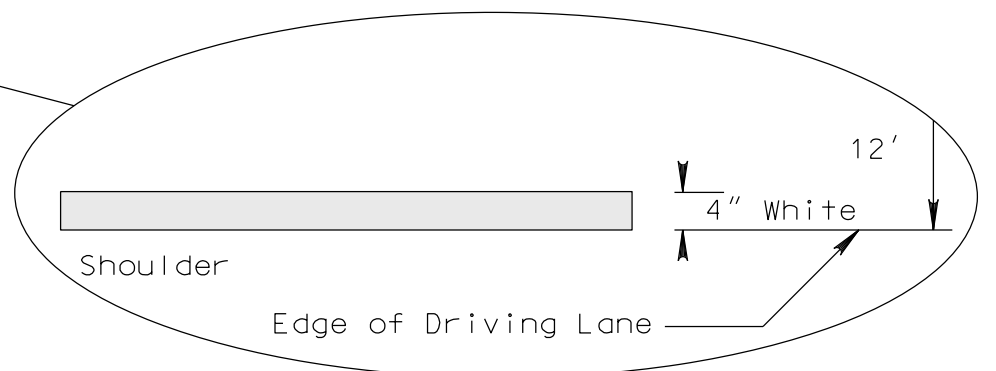
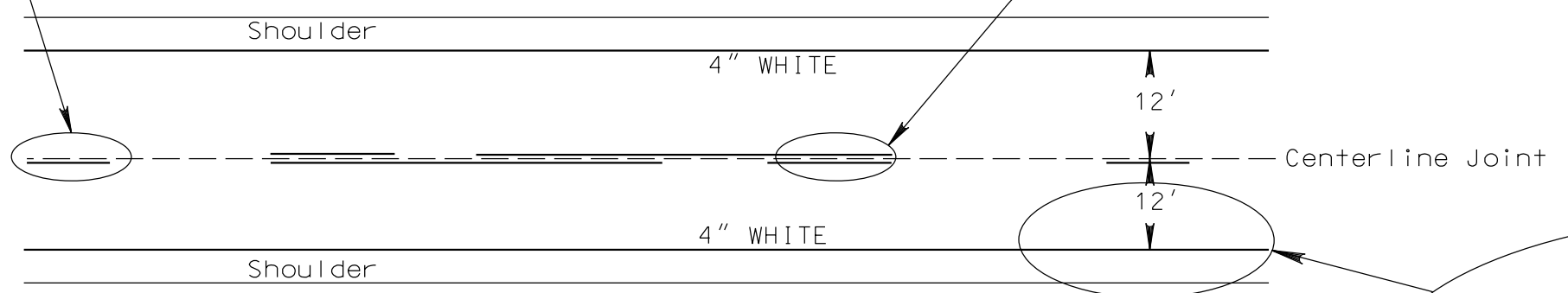
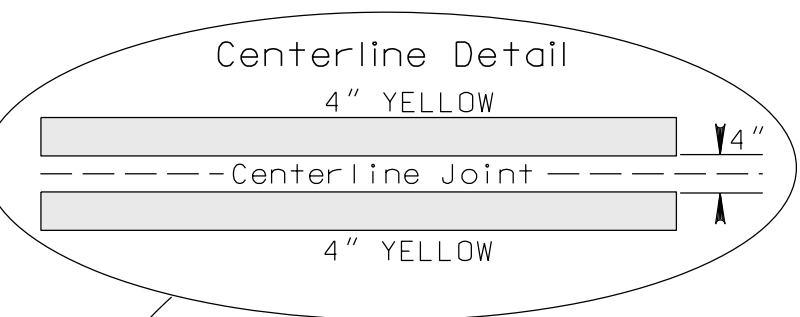


(A) NO PASSING ZONE  
(B) End of Zone Marker



NOTE: A TWO "GUN" SYSTEM WILL BE USED TO OBTAIN THIS PATTERN.

WHEN A SINGLE SKIP LINE EXISTS, THE SKIP WILL BE PLACED TO THE SOUTH OR EAST OF THE CENTERLINE JOINT.



\* Messages on signs will vary depending on the operation being conducted.

Vehicle-mounted signs will be mounted in a manner such that they are not obscured by equipment or supplies. Sign legends on vehicle-mounted signs will be covered or turned from view when work is not in progress.

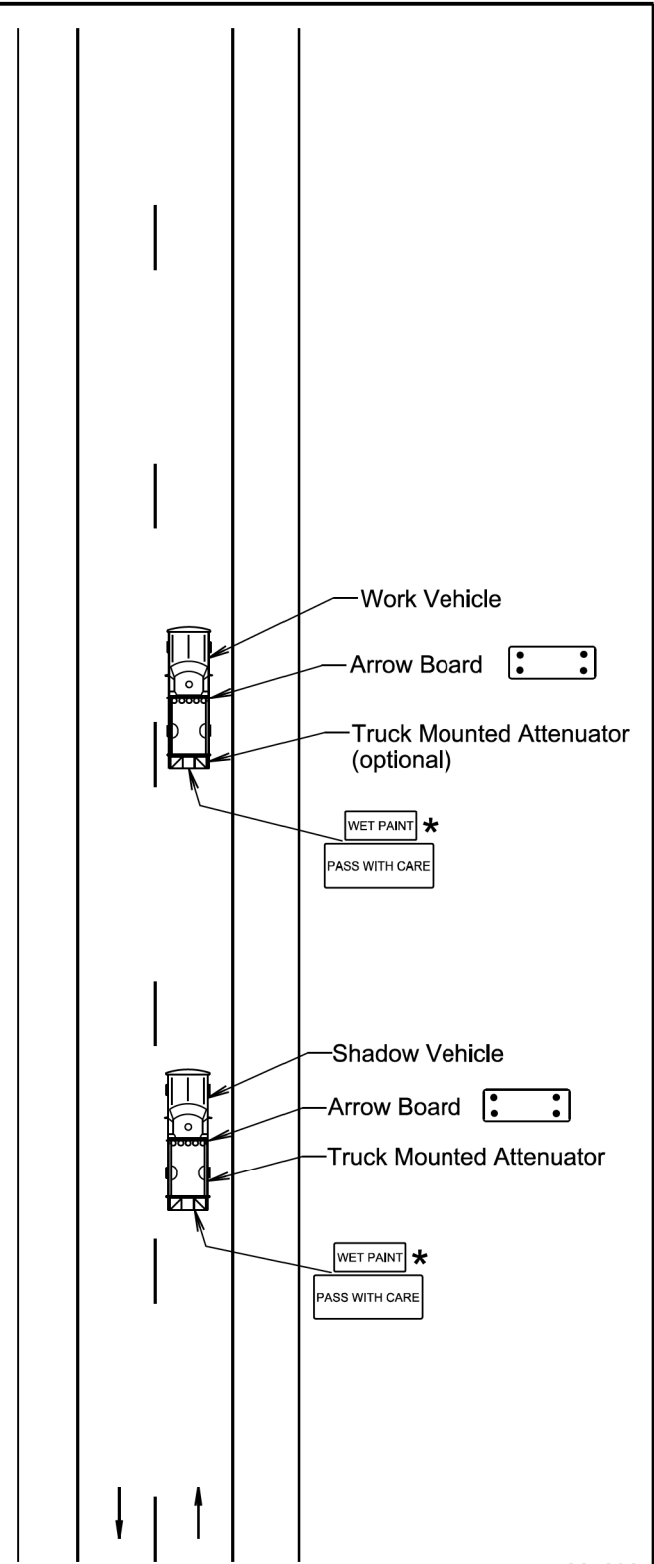
Shadow and Work vehicles will display high-intensity rotating, flashing, oscillating, or strobe lights, flags, signs, or arrow boards.

Vehicle hazard warning signals will not be used instead of the vehicle's high-intensity rotating, flashing, oscillating, or strobe lights.

When an arrow board is used, it will be used in the caution mode. Marching Diamonds are acceptable.

Arrow boards will, as a minimum, be Type B, with a size of 60" x 30".

All costs associated with the traffic control for mobile operation including signs, arrow boards and equipment will be incidental to the contract lump sum price for "Traffic Control, Miscellaneous".



January 22, 2021

Published Date: 2025

SD  
DOT

MOBILE OPERATIONS ON 2-LANE ROAD

PLATE NUMBER  
634.06

Sheet 1 of 1

Posted Speed Prior to Work (M.P.H.)	Spacing of Advance Warning Signs (Feet) (A)	Spacing of Channelizing Devices (Feet) (G)
0 - 30	200	25
35 - 40	350	25
45	500	25
50	500	50
55	750	50
60 - 65	1000	50

- Flagger
- Channelizing Device

For low-volume traffic situations with short work zones on straight roadways where the flagger is visible to road users approaching from both directions, a single flagger may be used.

The ROAD WORK AHEAD and the END ROAD WORK signs may be omitted for short duration operations (1 hour or less).

For tack and/or flush seal operations, when flaggers are not being used, the FRESH OIL sign (W21-2) will be displayed in advance of the liquid asphalt areas.

Flashing warning lights and/or flags may be used to call attention to the advance warning signs.

The channelizing devices will be drums or 42" cones.

Channelizing devices are not required along the centerline adjacent to work area when pilot cars are utilized for escorting traffic through the work area.

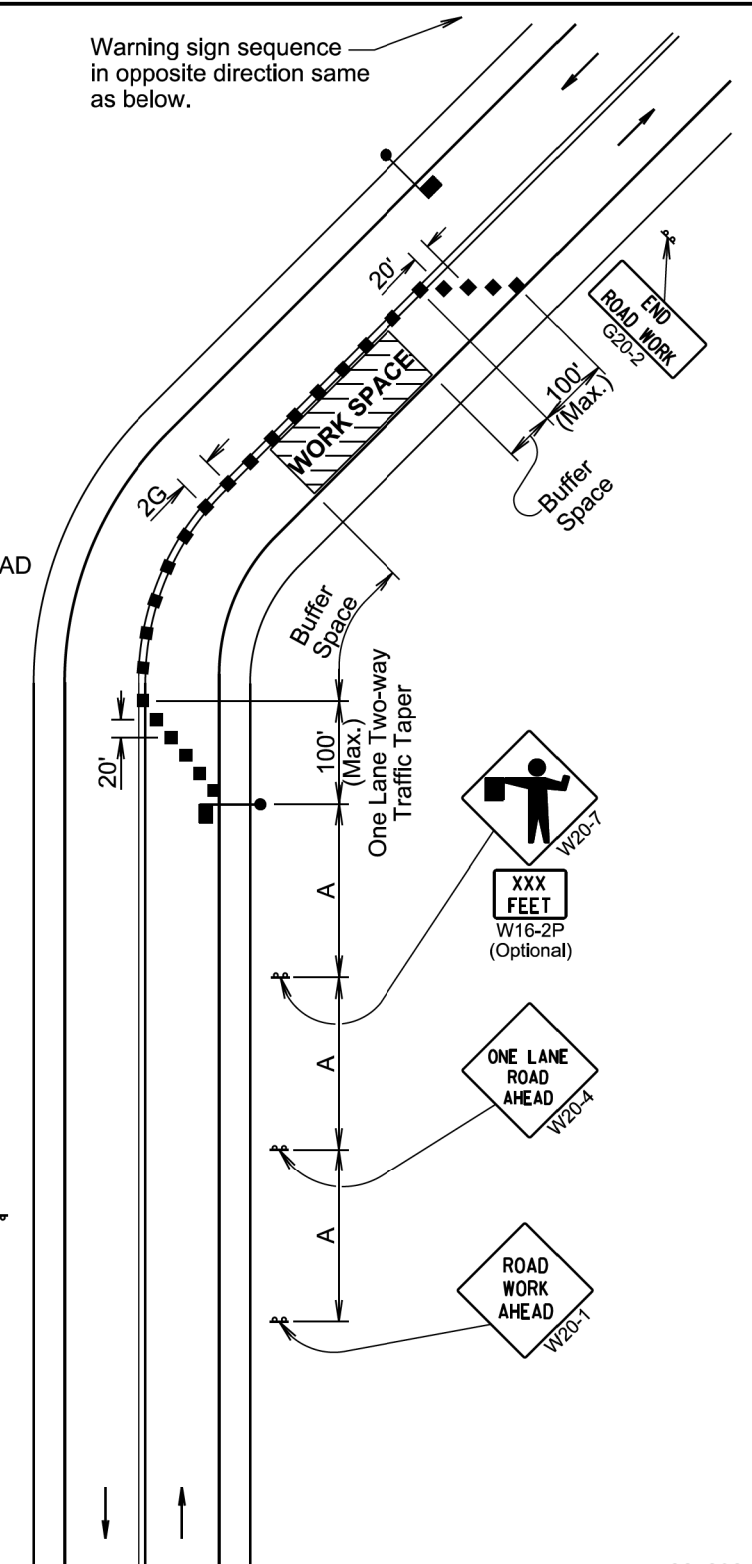
END ROAD WORK G20-2

Channelizing devices and flaggers will be used at intersecting roads to control intersecting road traffic as required.

The buffer space should be extended so that the two-way traffic taper is placed before a horizontal or vertical curve to provide adequate sight distance for the flagger and queue of stopped vehicles.

The length of A may be adjusted to fit field conditions.

Warning sign sequence in opposite direction same as below.



January 22, 2021

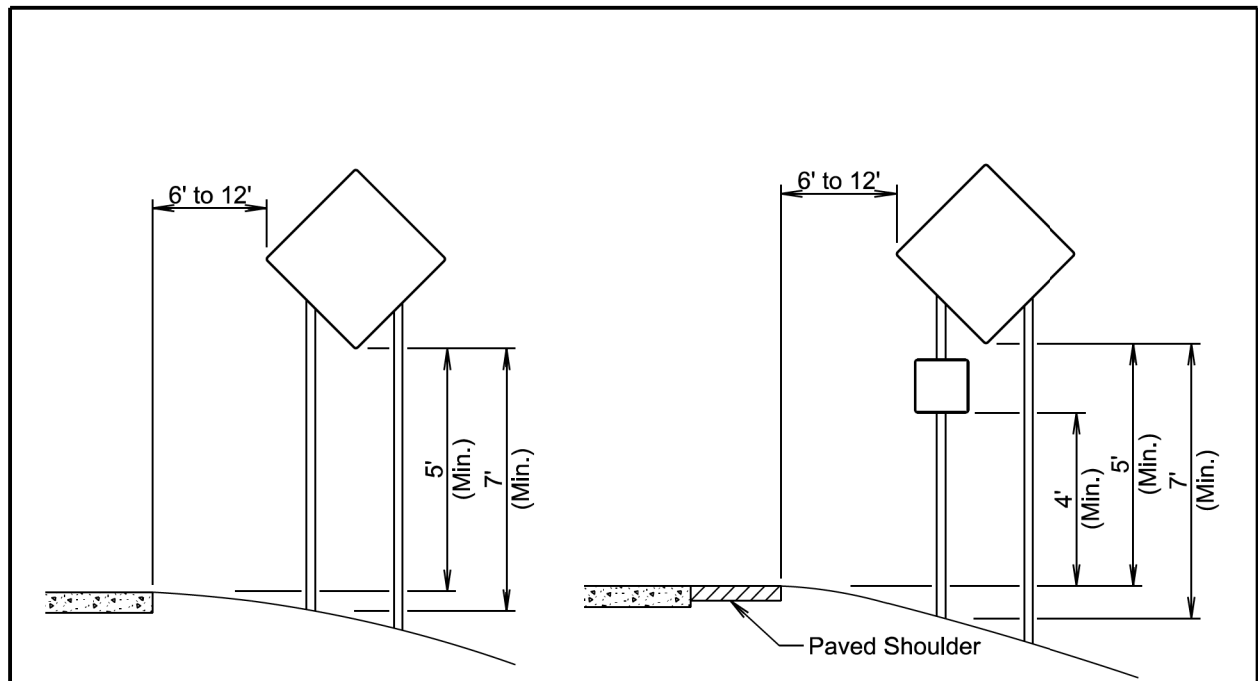
Published Date: 2025

SD  
DOT

LANE CLOSURE WITH FLAGGER PROVIDED

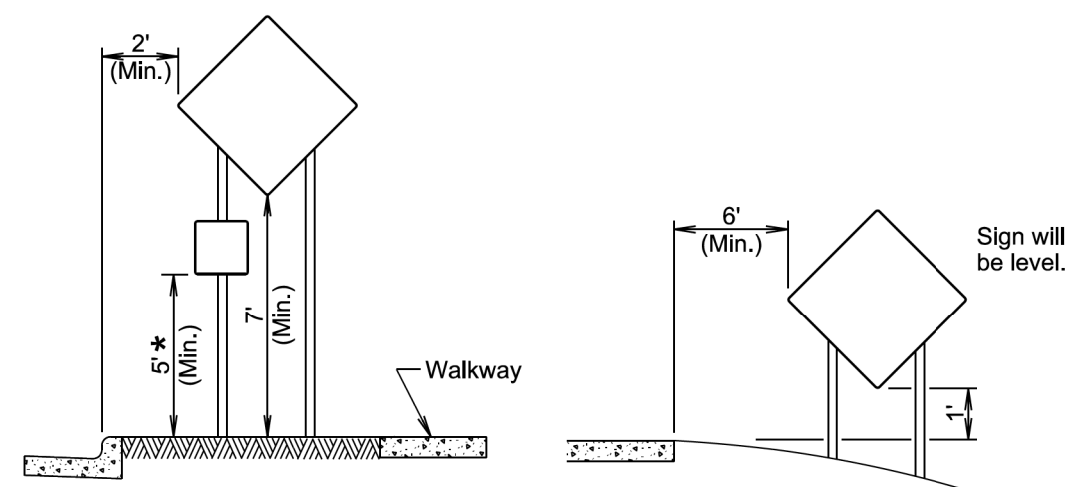
PLATE NUMBER  
634.23

Sheet 1 of 1



**RURAL DISTRICT**

**RURAL DISTRICT WITH SUPPLEMENTAL PLATE**

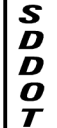


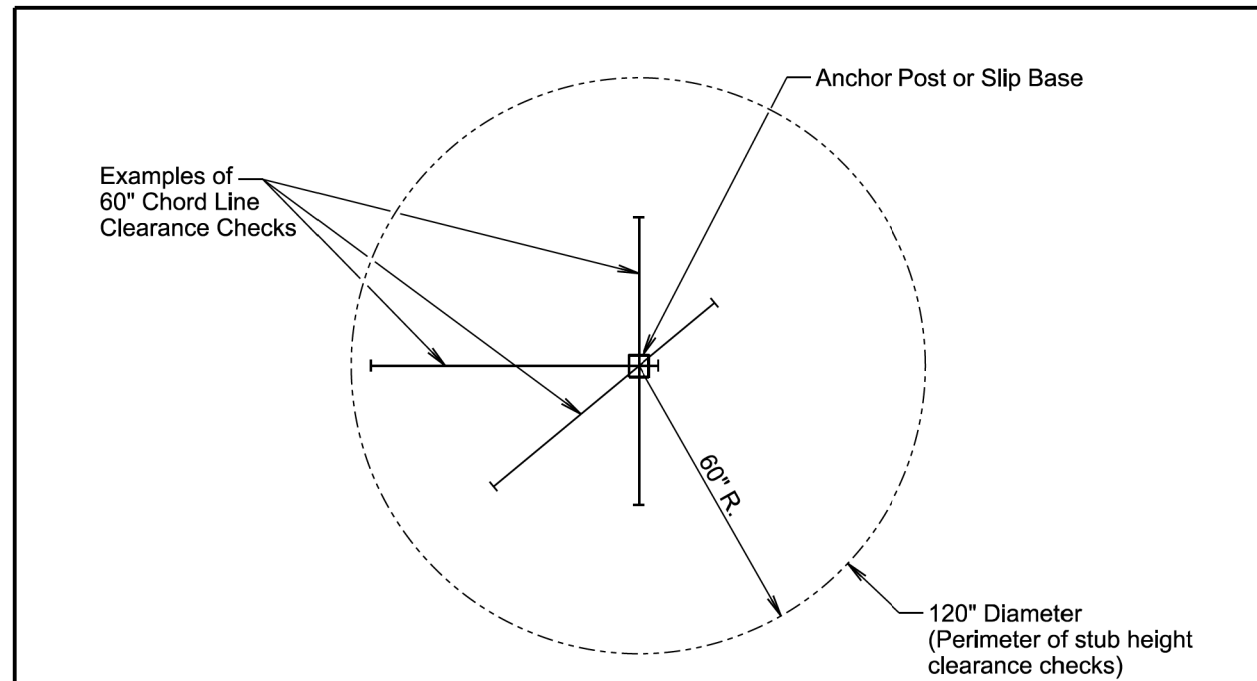
**URBAN DISTRICT**

**RURAL DISTRICT 3 DAY MAXIMUM**  
(Not applicable to regulatory signs)

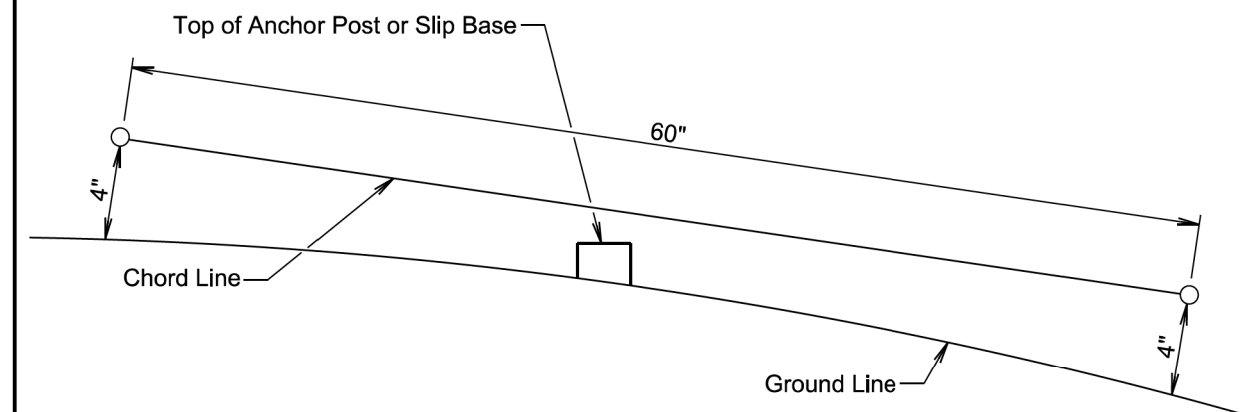
\* If the bottom of supplemental plate is mounted lower than 7 feet above a pedestrian walkway, the supplemental plate should not project more than 4" into the pedestrian facility.

January 22, 2021

	<b>CRASHWORTHY SIGN SUPPORTS</b> (Typical Construction Signing)	PLATE NUMBER 634.85
		Sheet 1 of 1
Published Date: 2025		



**PLAN VIEW**  
(Examples of stub height clearance checks)



**ELEVATION VIEW**

**GENERAL NOTES:**

- The top of anchor posts and slip bases WILL NOT extend above a 60" chord line within a 120" diameter circle around the post with ends 4" above the ground.
- At locations where there is curb and gutter adjacent to the breakaway sign support, the stub height will be a maximum of 4" above the ground line at the localized area adjacent to the breakaway support stub.
- The 4" stub height clearance is not necessary for U-channel lap splices where the support is designed to yield (bend) at the base.

January 22, 2021

	<b>BREAKAWAY SUPPORT STUB CLEARANCE</b>	PLATE NUMBER 634.99
		Sheet 1 of 1
Published Date: 2025		