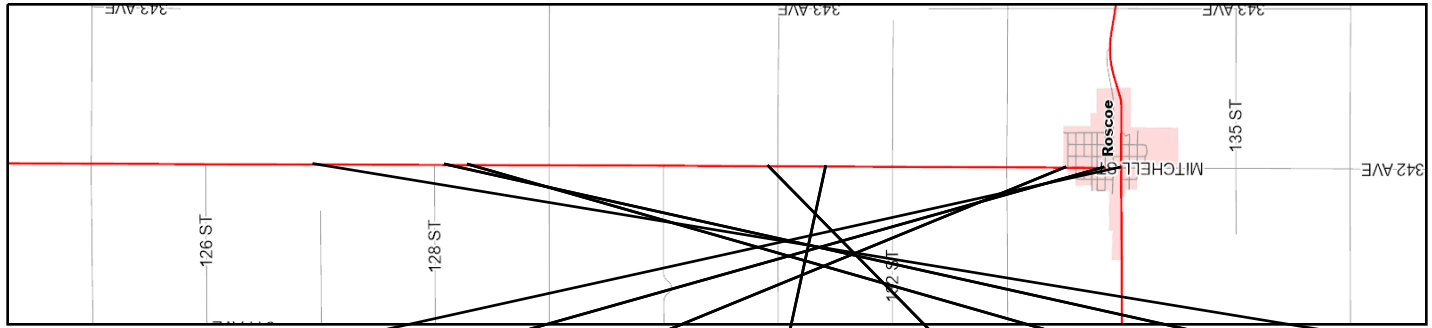


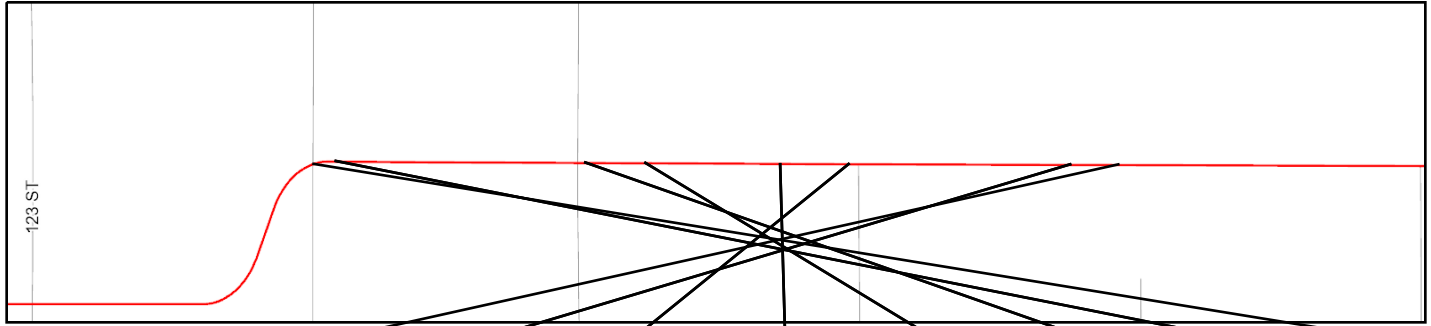
HIGHWAY 247
Beginning MRM = 169.52
Ending MRM = 175.00

RURAL ←

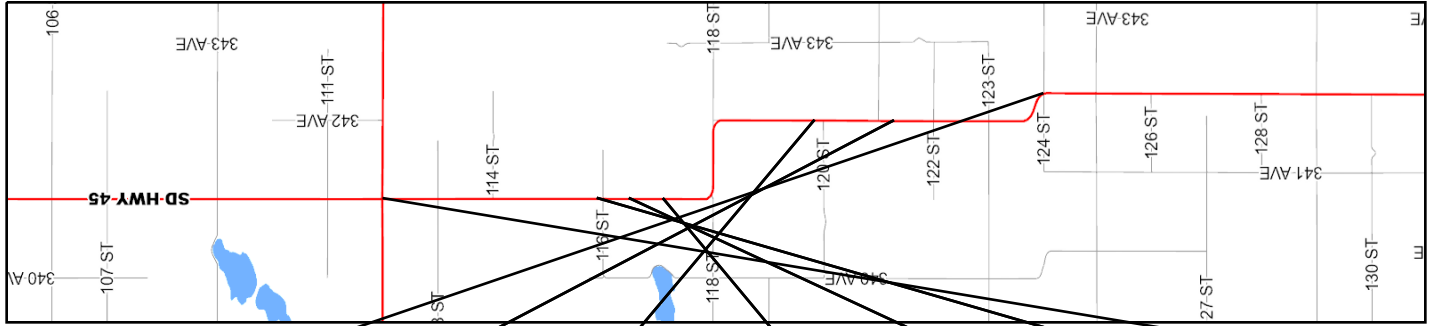
HIGHWAY 247
Beginning MRM = 169.52
Ending MRM = 175.00



IDENTIFICATION								
Federal Aid System	STP	STP	STP	STP	STP	STP	STP	STP
Funding Category	SEC	SEC	SEC	SEC	SEC	SEC	SEC	SEC
Functional Classification	R-MA C	R-MA C	R-MA C	R-MA C	R-MA C	R-MA C	R-MA C	R-MA C
Direction								
Beginning MRM	169.52	169.66	170.00	172.00	172.00	175.00	175.00	175.00
MRM Displacement	0.000	0.005	0.001	0.108	0.618	0.254	0.456	0.456
Segment Length	0.148	0.340	2.108	0.510	2.634	0.202	1.153	1.153
Year Built	1955	1955	1955	1997	1955	1995	1955	1955
Year Last Improved	2003	2003	2011	2011	2011	2011	2011	2011
Year Last Sealed	2015	2015	2015	2015	2015	2015	2015	2015
ROADWAY CONDITIONS								
Surface Condition Index	3.31	3.87	4.10	4.37	4.21	4.25	4.36	4.36
Roughness Index	3.50 (**)	3.57 (**)	4.30 (21)	4.69 (21)	4.47 (21)	4.25 (21)	4.58 (21)	4.58 (21)
ASPHALT INDEX VALUES								
Transverse Cracking	4.80 (21)	4.80 (21)	4.71 (**)	4.65 (**)	4.69 (**)	4.50 (**)	4.61 (**)	4.61 (**)
Fatigue Cracking	3.10 (21)	4.36 (21)	4.27 (**)	4.60 (**)	4.37 (**)	4.60 (**)	4.64 (**)	4.64 (**)
Patching/Patch Deterioration	5.00 (21)	5.00 (21)	4.62 (**)	5.00 (**)	4.89 (**)	5.00 (**)	5.00 (**)	5.00 (**)
Block Cracking	5.00 (21)	4.54 (21)	4.05 (**)	4.30 (**)	4.14 (**)	4.30 (**)	4.30 (**)	4.30 (**)
Rut Index	4.65 (**)	4.74 (**)	4.61 (21)	4.64 (21)	4.68 (21)	4.59 (21)	4.73 (21)	4.73 (21)
Rut Depth(Inches) AVG/MAX	0.10 / 0.60	0.10 / 0.60	0.10 / 0.30	0.10 / 0.20	0.10 / 0.40	0.10 / 0.20	0.10 / 0.30	0.10 / 0.30
CONCRETE INDEX VALUES								
D-Cracking/ASR								
Joint Spalling								
Corner Cracking								
Faulting / CRCP Block Cracking								
Joint Seal Damage								
Punchouts								
STRUCTURAL DESCRIPTION								
Surface Type	THK	THK	TONW	THK	TONW	TONS	TONW	TONW
Shoulder Type - Primary/Secondary	C & G/N/D	AC/N/D	AC/N/D	AC/N/D	AC/N/D	AC/N/D	AC/N/D	AC/N/D
Surface Width	58 (058)	24 (024)	24 (024)	24 (024)	24 (024)	24 (024)	24 (024)	24 (024)
Left Shoulder Width-Prim/Sec	2 (02) / 0 (0)	0 (00) / 0 (0)	1 (01) / 0 (0)	5 (05) / 0 (0)	1 (01) / 0 (0)	5 (05) / 0 (0)	1 (01) / 0 (0)	1 (01) / 0 (0)
Right Shoulder Width-Prim/Sec	2 (02) / 0 (0)	0 (00) / 0 (0)	1 (01) / 0 (0)	5 (05) / 0 (0)	1 (01) / 0 (0)	5 (05) / 0 (0)	1 (01) / 0 (0)	1 (01) / 0 (0)
Widths-RDWY/ROW-Predom/Min	062/100/100	024/100/100	026/100/100	034/100/100	026/100/100	034/100/100	026/100/100	026/100/100
Roadbed Layer 1	2015/TS3/0.4	2015/TS3/0.4	2015/TS3/0.4	2015/TS3/0.4	2015/TS3/0.4	2015/TS3/0.4	2015/TS3/0.4	2015/TS3/0.4
Roadbed Layer 2	2007/TS3/0.4	2007/TS3/0.4	2013/TC/0.0	2013/TC/0.0	2013/TC/0.0	2013/TC/0.0	2013/TC/0.0	2013/TC/0.0
Roadbed Layer 3	2006/TC/0.0	2006/TC/0.0	2011/AW3/1.5	2011/AW3/1.5	2011/AW3/1.5	2011/AW3/1.5	2011/AW3/1.5	2011/AW3/1.5
Roadbed Layer 4	2003/AM3/2.0	2003/AM3/2.0	2007/TS3/0.4	2007/TS3/0.4	2007/TS3/0.4	2007/TS3/0.4	2007/TS3/0.4	2007/TS3/0.4
Roadbed Layer 5	1990/AD3/1.0	1990/AD3/1.0	2000/TS3/0.4	2000/TS3/0.4	2000/TS3/0.4	2000/TS3/0.4	2000/TS3/0.4	2000/TS3/0.4
Roadbed Layer 6	1982/TG4/0.5	1982/TG4/0.5	1998/PA1/1.5	1998/PA1/1.5	1998/PA1/1.5	1998/PA1/1.5	1998/PA1/1.5	1998/PA1/1.5
Roadbed Layer 7	1955/AE3/2.0	1955/AE3/2.0	1993/TS3/0.4	1998/AE3/2.0	1993/TS3/0.4	1996/AE3/1.0	1993/TS3/0.4	1993/TS3/0.4
Roadbed Layer 8	1955/BU4/6.0	1955/BU4/6.0	1992/TC/0.0	1998/AE3/1.0	1992/TC/0.0	1995/BU4/12.0	1992/TC/0.0	1992/TC/0.0
Roadbed Layer 9			1990/AD3/2.0	1997/BU4/12.0	1990/AD3/2.0		1990/AD3/2.0	1990/AD3/2.0
Roadbed Layer 10			1982/TG4/0.5		1982/TG4/0.5		1982/TG4/0.5	1982/TG4/0.5
Roadbed Layer 11			1974/TS3/0.5		1974/TS3/0.5		1974/TS3/0.5	1974/TS3/0.5
Roadbed Layer 12			1968/TG3/0.7		1968/TG3/0.7		1968/TG3/0.7	1968/TG3/0.7
Number Of Structures	0	0	0	0	0	0	0	0
Number Of Box Culverts	0	0	0	0	0	0	0	0
3 YR AVG MAINTENANCE COSTS								
Mainline	\$1588	\$1591	\$2612	\$567	\$936	\$2866	\$1062	\$1062
Shoulders	\$0	\$0	\$0	\$0	\$0	\$0	\$0	\$0
Structure	\$0	\$0	\$0	\$0	\$0	\$0	\$0	\$0
Other	\$9466	\$9471	\$2436	\$6557	\$5693	\$16198	\$6430	\$6430
Total	\$11061	\$11059	\$5048	\$7124	\$6629	\$19064	\$7493	\$7493
Total 3 Year Main Contract Amount	\$2446	\$2447	\$633	\$1716	\$1488	\$4228	\$1679	\$1679
TRAFFIC								
Current ADT	523	522	207	207	207	207	207	207
Projected 20 Year ADT	691	690	274	274	274	274	274	274
Number Of Trucks	66	66	78	78	78	78	78	78
CRASHES								
Weighted Crash Rate	1.05	0.00	1.26	2.65	4.02	0.00	2.30	2.30
Number Of Fatal	0	0	0	0	0	0	0	0
Number Of Injury	0	0	0	0	0	0	0	0
Number Of Property Damage	1	0	1	1	4	0	1	1
MAINLINE IMPROVEMENTS								
Project Programmed	YES	YES	YES	YES	YES	YES	YES	YES
PCN								
Improvement Type	MILL AC OVLY	MILL AC OVLY	CHIP SEAL	CHIP SEAL	CHIP SEAL	CHIP SEAL	CHIP SEAL	CHIP SEAL
Estimated Improvement Cost	\$60	\$138	\$70	\$17	\$87	\$7	\$38	\$38
Improvement Year	2023	2023	2022	2022	2022	2022	2022	2022
PCN								
Improvement Type	ROUTE/SEAL	ROUTE/SEAL	FULL DEP REC	CHIP SEAL	CHIP SEAL	ROUTE/SEAL	CHIP SEAL	CHIP SEAL
Estimated Improvement Cost	\$1	\$2	\$1330	\$0	\$0	\$1	\$0	\$0
Improvement Year	2025	2025	2029	2022	2022	2033	2022	2022



IDENTIFICATION								
Federal Aid System	STP	STP	STP	STP	STP	STP	STP	STP
Funding Category	SEC	SEC	SEC	SEC	SEC	SEC	SEC	SEC
Functional Classification	R-MA C	R-MA C	R-MA C	R-MA C	R-MA C	R-MA C	R-MA C	R-MA C
Direction								
Beginning MRM	176.00	176.00	177.00	177.00	178.00	178.00	178.00	179.00
MRM Displacement	0.608	0.780	0.574	0.822	0.275	0.490	0.490	0.406
Segment Length	0.172	0.792	0.248	0.485	0.215	0.891	0.891	0.080
Year Built	2011	1955	1995	1955	1995	1955	1955	1971
Year Last Improved	2011	2011	2011	2011	2011	2011	2011	2011
Year Last Sealed	2015	2015	2015	2015	2015	2015	2015	2015
ROADWAY CONDITIONS								
Surface Condition Index	3.07	4.30	4.31	4.30	4.14	4.50	4.50	4.32
Roughness Index	2.42 (21)	4.41 (21)	4.40 (21)	4.36 (21)	4.11 (21)	4.53 (21)	4.53 (21)	4.55 (21)
ASPHALT INDEX VALUES								
Transverse Cracking	4.50 (**)	4.50 (**)	4.80 (**)	4.50 (**)	4.50 (**)	4.55 (**)	4.55 (**)	4.50 (**)
Fatigue Cracking	4.60 (**)	4.60 (**)	4.60 (**)	4.60 (**)	4.60 (**)	4.77 (**)	4.77 (**)	4.60 (**)
Patching/Patch Deterioration	5.00 (**)	5.00 (**)	5.00 (**)	5.00 (**)	5.00 (**)	5.00 (**)	5.00 (**)	5.00 (**)
Block Cracking	4.30 (**)	4.30 (**)	4.30 (**)	4.30 (**)	4.30 (**)	4.50 (**)	4.50 (**)	4.30 (**)
Rut Index	4.40 (21)	4.69 (21)	4.66 (21)	4.75 (21)	4.80 (21)	4.76 (21)	4.76 (21)	4.84 (21)
Rut Depth(Inches) AVG/MAX	0.20 / 0.20	0.10 / 0.20	0.10 / 0.20	0.10 / 0.10	0.10 / 0.10	0.10 / 0.20	0.10 / 0.20	0.00 / 0.10
CONCRETE INDEX VALUES								
D-Cracking/ASR								
Joint Spalling								
Corner Cracking								
Faulting / CRCP Block Cracking								
Joint Seal Damage								
Punchouts								
STRUCTURAL DESCRIPTION								
Surface Type	TONS	TONW	TONS	TONW	TONS	TONW	TONS	TONW
Shoulder Type - Primary/Secondary	AC/NONE	AC/N/D	AC/N/D	AC/N/D	AC/N/D	AC/N/D	AC/N/D	AC/N/D
Surface Width	24 (024)	24 (024)	24 (024)	24 (024)	24 (024)	24 (024)	24 (024)	24 (024)
Left Shoulder Width-Prim/Sec	6 (06) / 0 (0)	1 (01) / 0 (0)	5 (05) / 0 (0)	1 (01) / 0 (0)	5 (05) / 0 (0)	1 (01) / 0 (0)	1 (01) / 0 (0)	1 (01) / 0 (0)
Right Shoulder Width-Prim/Sec	6 (06) / 0 (0)	1 (01) / 0 (0)	5 (05) / 0 (0)	1 (01) / 0 (0)	5 (05) / 0 (0)	1 (01) / 0 (0)	1 (01) / 0 (0)	1 (01) / 0 (0)
Widths-RDWY/ROW-Predom/Min	036/100/100	026/100/100	034/100/100	026/100/100	034/100/100	026/100/100	026/100/100	026/100/100
Roadbed Layer 1	2015/TS3/0.4	2015/TS3/0.4	2015/TS3/0.4	2015/TS3/0.4	2015/TS3/0.4	2015/TS3/0.4	2015/TS3/0.4	2015/TS3/0.4
Roadbed Layer 2	2013/TC/0.0	2013/TC/0.0	2013/TC/0.0	2013/TC/0.0	2013/TC/0.0	2013/TC/0.0	2013/TC/0.0	2013/TC/0.0
Roadbed Layer 3	2011/AE3/2.0	2011/AW3/1.5	2011/AW3/1.5	2011/AW3/1.5	2011/AW3/1.5	2011/AW3/1.5	2011/AW3/1.5	2011/AW3/1.5
Roadbed Layer 4	2011/AE3/2.0	2007/TS3/0.4	2007/TS3/0.4	2007/TS3/0.4	2007/TS3/0.4	2007/TS3/0.4	2007/TS3/0.4	2007/TS3/0.4
Roadbed Layer 5	2011/BU3/4.0	2000/TS3/0.4	2000/TS3/0.4	2000/TS3/0.4	2000/TS3/0.4	2000/TS3/0.4	2000/TS3/0.4	2000/TS3/0.4
Roadbed Layer 6	2011/BU8/8.0	1998/PA1/1.5	1996/AE3/2.0	1998/PA1/1.5	1996/AE3/2.0	1998/PA1/1.5	1998/PA1/1.5	1998/PA1/1.5
Roadbed Layer 7		1993/TS3/0.4	1996/AE3/1.0	1993/TS3/0.4	1996/AE3/1.0	1993/TS3/0.4	1993/TS3/0.4	1993/TS3/0.4
Roadbed Layer 8		1992/TC/0.0	1995/BU4/12.0	1992/TC/0.0	1995/BU4/12.0	1992/TC/0.0	1992/TC/0.0	1992/TC/0.0
Roadbed Layer 9		1990/AD3/2.0		1990/AD3/2.0		1990/AD3/2.0	1990/AD3/2.0	1990/AD3/2.0
Roadbed Layer 10		1982/TG4/0.5		1982/TG4/0.5		1982/TG4/0.5	1982/TG4/0.5	1982/TG4/0.5
Roadbed Layer 11		1974/TS3/0.5		1974/TS3/0.5		1974/TS3/0.5	1974/TS3/0.5	1971/TG3/0.7
Roadbed Layer 12		1968/TG3/0.7		1968/TG3/0.7		1968/TG3/0.7	1968/TG3/0.7	1971/BU6/6.0
Number Of Structures	0	0	0	0	0	0	0	0
Number Of Box Culverts	0	0	0	0	0	0	0	0
3 YR AVG MAINTENANCE COSTS								
Mainline	\$3895	\$1336	\$2702	\$1765	\$2395	\$760	\$763	\$763
Shoulders	\$0	\$0	\$0	\$0	\$0	\$0	\$0	\$0
Structure	\$0	\$0	\$0	\$0	\$0	\$0	\$0	\$0
Other	\$26785	\$9162	\$18577	\$12120	\$16391	\$5221	\$5225	\$5225
Total	\$30680	\$10497	\$21278	\$13885	\$18786	\$5981	\$5975	\$5975
Total 3 Year Main Contract Amount	\$7000	\$2393	\$4855	\$3161	\$4284	\$1368	\$1363	\$1363
TRAFFIC								
Current ADT	207	207	207	207	207	207	207	207
Projected 20 Year ADT	274	274	274	274	274	274	274	274
Number Of Trucks	78	78	78	78	78	78	78	78
CRASHES								
Weighted Crash Rate	0.00	0.00	2.65	7.94	0.00	2.65	0.00	0.00
Number Of Fatal	0	0	0	0	0	0	0	0
Number Of Injury	0	0	0	0	0	0	0	0
Number Of Property Damage	0	0	1	3	0	1	0	0
MAINLINE IMPROVEMENTS								
Project Programmed	YES	YES	YES	YES	YES	YES	YES	YES
PCN								
Improvement Type	CHIP SEAL	CHIP SEAL	CHIP SEAL	CHIP SEAL	CHIP SEAL	CHIP SEAL	CHIP SEAL	CHIP SEAL
Estimated Improvement Cost	\$6	\$26	\$8	\$16	\$7	\$29	\$3	\$3
Improvement Year	2022	2022	2022	2022	2022	2022	2022	2022
PCN								
Improvement Type	CHIP SEAL	CHIP SEAL	CHIP SEAL	FULL DEP REC	CHIP SEAL	CHIP SEAL	CHIP SEAL	CHIP SEAL
Estimated Improvement Cost	\$0	\$0	\$0	\$306	\$0	\$0	\$0	\$0
Improvement Year	2022	2022	2022	2029	2022	2022	2022	2022



IDENTIFICATION							
Federal Aid System	STP	STP	STP	STP	STP	STP	STP
Funding Category	SEC	SEC	SEC	SEC	SEC	SEC	SEC
Functional Classification	R-MA C	R-MA C	R-MA C	R-MA C	R-MA C	R-MA C	R-MA C
Direction							
Beginning MRM	179.48	182.00	183.00	187.00	188.00	188.00	188.00
MRM Displacement	0.000	0.377	0.796	0.431	0.050	0.633	0.633
Segment Length	2.882	1.445	3.627	0.618	0.583	3.896	3.896
Year Built	1970	1995	1970	1997	1970	1950	1950
Year Last Improved	2011	2011	2011	2011	2011	2011	2011
Year Last Sealed	2015	2015	2015	2015	2015	2015	2015
ROADWAY CONDITIONS							
Surface Condition Index	4.29	4.69	4.38	4.64	4.34	4.53	4.53
Roughness Index	4.60 (21)	4.69 (21)	4.71 (21)	4.89 (21)	4.67 (21)	4.63 (21)	4.63 (21)
ASPHALT INDEX VALUES							
Transverse Cracking	4.53 (**)	4.75 (**)	4.56 (**)	4.68 (**)	4.50 (**)	4.55 (**)	4.55 (**)
Fatigue Cracking	4.60 (**)	4.82 (**)	4.66 (**)	4.79 (**)	4.60 (**)	4.63 (**)	4.63 (**)
Patching/Patch Deterioration	4.78 (**)	4.93 (**)	5.00 (**)	5.00 (**)	5.00 (**)	5.00 (**)	5.00 (**)
Block Cracking	4.16 (**)	4.76 (**)	4.30 (**)	4.64 (**)	4.30 (**)	4.53 (**)	4.53 (**)
Rut Index	4.79 (21)	4.75 (21)	4.79 (21)	4.76 (21)	4.78 (21)	4.81 (21)	4.81 (21)
Rut Depth(Inches) AVG/MAX	0.10 / 0.20	0.10 / 0.10	0.10 / 0.10	0.10 / 0.10	0.10 / 0.10	0.10 / 0.10	0.10 / 0.10
CONCRETE INDEX VALUES							
D-Cracking/ASR							
Joint Spalling							
Corner Cracking							
Faulting / CRCP Block Cracking							
Joint Seal Damage							
Punchouts							
STRUCTURAL DESCRIPTION							
Surface Type	TONW	TONS	TONW	THK	TONW	TONW	TONW
Shoulder Type - Primary/Secondary	AC/N/D	AC/N/D	AC/N/D	AC/N/D	AC/N/D	AC/N/D	AC/N/D
Surface Width	24 (024)	24 (024)	24 (024)	24 (024)	24 (024)	24 (024)	24 (024)
Left Shoulder Width-Prim/Sec	1 (01) / 0 (0)	5 (05) / 0 (0)	1 (01) / 0 (0)	5 (05) / 0 (0)	1 (01) / 0 (0)	0 (00) / 0 (0)	0 (00) / 0 (0)
Right Shoulder Width-Prim/Sec	1 (01) / 0 (0)	5 (05) / 0 (0)	1 (01) / 0 (0)	5 (05) / 0 (0)	1 (01) / 0 (0)	0 (00) / 0 (0)	0 (00) / 0 (0)
Widths-RDWY/ROW-Predom/Min	026/100/100	034/100/100	026/100/100	034/100/100	026/100/100	024/100/100	024/100/100
Roadbed Layer 1	2015/TS3/0.4	2015/TS3/0.4	2015/TS3/0.4	2015/TS3/0.4	2015/TS3/0.4	2015/TS3/0.4	2015/TS3/0.4
Roadbed Layer 2	2013/TC/0.0	2013/TC/0.0	2013/TC/0.0	2013/TC/0.0	2013/TC/0.0	2013/TC/0.0	2013/TC/0.0
Roadbed Layer 3	2011/AW3/1.5	2011/AW3/1.5	2011/AW3/1.5	2011/AW3/1.5	2011/AW3/1.5	2011/AW3/1.5	2011/AW3/1.5
Roadbed Layer 4	2007/TS3/0.4	2007/TS3/0.4	2007/TS3/0.4	2007/TS3/0.4	2007/TS3/0.4	2007/TS3/0.4	2007/TS3/0.4
Roadbed Layer 5	2000/TS3/0.4	2000/TS3/0.4	2000/TS3/0.4	2000/TS3/0.4	2000/TS3/0.4	2000/TS3/0.4	2000/TS3/0.4
Roadbed Layer 6	1998/PA1/1.5	1996/AE3/2.0	1998/PA1/1.5	1998/PA1/1.5	1998/PA1/1.5	1998/PA1/1.5	1998/PA1/1.5
Roadbed Layer 7	1993/TS3/0.4	1996/AE3/1.0	1993/TS3/0.4	1998/AE3/2.0	1993/TS3/0.4	1993/TS3/0.4	1993/TS3/0.4
Roadbed Layer 8	1992/TC/0.0	1995/BU4/12.0	1992/TC/0.0	1998/AE3/1.0	1992/TC/0.0	1992/TC/0.0	1992/TC/0.0
Roadbed Layer 9	1989/AD3/2.0		1989/AD3/2.0	1997/BU4/12.0	1989/AD3/2.0	1989/AD3/2.0	1989/AD3/2.0
Roadbed Layer 10	1978/TG3/0.7		1978/TG3/0.7		1978/TG3/0.7	1978/TG3/0.7	1978/TG3/0.7
Roadbed Layer 11	1970/TG3/0.5		1970/TG3/0.5		1970/TG3/0.5	1970/TG3/0.5	1970/TG3/0.5
Roadbed Layer 12	1970/BU6/6.0		1970/BU6/6.0		1970/BU6/6.0	1968/BU6/6.0	1968/BU6/6.0
Number Of Structures	0	0	0	0	0	0	0
Number Of Box Culverts	0	0	0	0	0	0	0
3 YR AVG MAINTENANCE COSTS							
Mainline	\$760	\$853	\$220	\$44	\$45	\$51	\$51
Shoulders	\$0	\$0	\$0	\$0	\$0	\$0	\$0
Structure	\$0	\$0	\$0	\$0	\$0	\$0	\$0
Other	\$5221	\$5692	\$5636	\$6311	\$6310	\$7091	\$7091
Total	\$5981	\$6545	\$5856	\$6354	\$6355	\$7142	\$7142
Total 3 Year Main Contract Amount	\$1368	\$1497	\$1471	\$1638	\$1636	\$1853	\$1853
TRAFFIC							
Current ADT	207	207	207	207	207	226	226
Projected 20 Year ADT	274	274	274	274	274	302	302
Number Of Trucks	78	78	78	78	78	78	78
CRASHES							
Weighted Crash Rate	1.84	0.00	8.03	0.00	2.65	3.11	3.11
Number Of Fatal	0	0	0	0	0	0	0
Number Of Injury	0	0	2	0	0	1	1
Number Of Property Damage	2	0	5	0	1	2	2
MAINLINE IMPROVEMENTS							
Project Programmed	YES	YES	YES	YES	YES	YES	YES
PCN							
Improvement Type	CHIP SEAL	CHIP SEAL	CHIP SEAL	CHIP SEAL	CHIP SEAL	CHIP SEAL	CHIP SEAL
Estimated Improvement Cost	\$95	\$48	\$120	\$20	\$19	\$129	\$129
Improvement Year	2022	2022	2022	2022	2022	2022	2022
PCN							
Improvement Type	ROUTE/SEAL	FULL DEP REC	ROUTE/SEAL	ROUTE/SEAL	CHIP SEAL	ROUTE/SEAL	ROUTE/SEAL
Estimated Improvement Cost	\$23	\$912	\$30	\$5	\$0	\$32	\$32
Improvement Year	2037	2041	2038	2037	2022	2036	2036