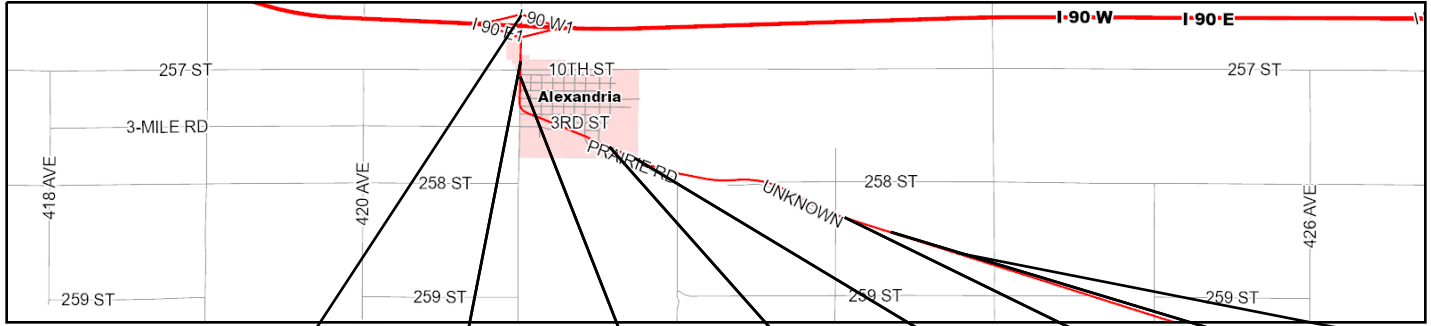


HIGHWAY 262
Beginning MRM = 356.02
Ending MRM = 359.00

RURAL



HIGHWAY 262
Beginning MRM = 356.02
Ending MRM = 359.00



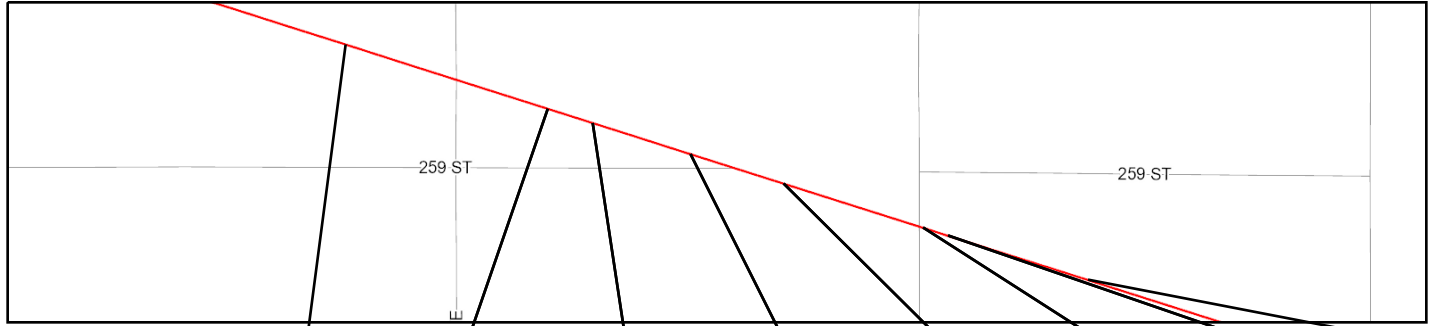
IDENTIFICATION								
Federal Aid System	STP	STP	STP	STP	STP	STP	STP	STP
Funding Category	MUNI	MUNI	MUNI	MUNI	MUNI	MINA	MINA	MINA
Functional Classification	R-MI A	R-MI A	R-MI A	R-MI A	R-MI A	R-MI A	R-MI A	R-MI A
Direction								
Beginning MRM	356.02	356.30	356.45	357.41	357.68	359.00	359.00	359.00
MRM Displacement	0.000	0.054	0.017	0.081	0.000	0.158	0.480	0.480
Segment Length	0.405	0.140	0.943	0.192	1.474	0.322	0.455	0.455
Year Built	1966	1966	1934	1990	1990	1934	1990	1990
Year Last Improved	2020	2012	2012	2012	2012	2012	2012	2012
Year Last Sealed	2021	2021	2021	2021	2021	2021	2021	2021
ROADWAY CONDITIONS								
Surface Condition Index	4.74	4.30	4.45	4.56	4.68	4.39	4.54	4.54
Roughness Index	3.78 (21)	4.48 (21)	4.70 (21)	4.89 (21)	4.85 (21)	4.83 (21)	4.80 (21)	4.80 (21)
ASPHALT INDEX VALUES								
Transverse Cracking	5.00 (21)	4.50 (21)	4.50 (21)	4.50 (21)	4.75 (21)	4.80 (21)	4.85 (21)	4.85 (21)
Fatigue Cracking	5.00 (21)	4.60 (21)	4.60 (21)	5.00 (21)	4.87 (21)	4.60 (21)	4.82 (21)	4.82 (21)
Patching/Patch Deterioration	5.00 (21)	5.00 (21)	5.00 (21)	5.00 (21)	5.00 (21)	5.00 (21)	5.00 (21)	5.00 (21)
Block Cracking	5.00 (21)	4.30 (21)	4.45 (21)	5.00 (21)	4.92 (21)	4.30 (21)	4.62 (21)	4.62 (21)
Rut Index	4.66 (21)	4.42 (21)	4.59 (21)	4.71 (21)	4.65 (21)	4.62 (21)	4.51 (21)	4.51 (21)
Rut Depth(Inches) AVG/MAX	0.10 / 0.20	0.20 / 0.30	0.10 / 0.20	0.10 / 0.10	0.10 / 0.20	0.10 / 0.20	0.10 / 0.20	0.10 / 0.20
CONCRETE INDEX VALUES								
D-Cracking/ASR								
Joint Spalling								
Corner Cracking								
Faulting / CRCP Block Cracking								
Joint Seal Damage								
Punchouts								
STRUCTURAL DESCRIPTION								
Surface Type	THK	THK	AONC	THK	THK	AONC	THK	THK
Shoulder Type - Primary/Secondary	AC/N/D	AC/N/D	AC/N/D	AC/N/D	AC/N/D	AC/N/D	AC/N/D	AC/N/D
Surface Width	24 (024)	24 (024)	24 (024)	24 (024)	24 (024)	24 (024)	24 (024)	24 (024)
Left Shoulder Width-Prim/Sec	7 (04) / 0 (0)	3 (03) / 0 (0)	2 (02) / 0 (0)	4 (04) / 0 (0)	4 (04) / 0 (0)	2 (02) / 0 (0)	2 (02) / 0 (0)	2 (02) / 0 (0)
Right Shoulder Width-Prim/Sec	7 (04) / 0 (0)	3 (03) / 0 (0)	2 (02) / 0 (0)	4 (04) / 0 (0)	4 (04) / 0 (0)	2 (02) / 0 (0)	2 (02) / 0 (0)	2 (02) / 0 (0)
Widths-RDWY/ROW-Predom/Min	038/300/300	030/300/300	028/66/066	032/66/066	032/100/100	028/100/100	028/100/100	028/100/100
Roadbed Layer 1	2021/TS3/0.4	2021/TS3/0.4	2021/TS3/0.4	2021/TS3/0.4	2021/TS3/0.4	2021/TS3/0.4	2021/TS3/0.4	2021/TS3/0.4
Roadbed Layer 2	2020/AU3/2.0	2015/TS3/0.4	2015/TS3/0.4	2015/TS3/0.4	2015/TS3/0.4	2015/TS3/0.4	2015/TS3/0.4	2015/TS3/0.4
Roadbed Layer 3	1990/AG3/1.0	2014/TC/0.0	2014/TC/0.0	2014/TC/0.0	2014/TC/0.0	2014/TC/0.0	2014/TC/0.0	2014/TC/0.0
Roadbed Layer 4	1966/AG3/3.0	2012/AJ3/2.0	2012/AJ3/2.0	2012/AJ3/2.0	2012/AJ3/2.0	2012/AJ3/2.0	2012/AJ3/2.0	2012/AJ3/2.0
Roadbed Layer 5	1966/BU5/6.0	1990/AG3/1.0	1990/AG3/2.5	1990/AG3/4.5	1990/AG3/4.5	1990/AG3/2.5	1990/AG3/4.5	1990/AG3/4.5
Roadbed Layer 6	1966/BU3/12.0	1966/AG3/3.0	1934/CR1/9.0	1990/BU4/8.0	1990/BU4/8.0	1934/CR1/9.0	1990/BU4/8.0	1990/BU4/8.0
Roadbed Layer 7		1966/BU5/6.0		1990/BU3/8.0	1990/BU3/8.0		1990/BU3/8.0	1990/BU3/8.0
Roadbed Layer 8		1966/BU3/12.0						
Roadbed Layer 9								
Roadbed Layer 10								
Roadbed Layer 11								
Roadbed Layer 12								
Number Of Structures	1	0	0	0	0	0	0	0
Number Of Box Culverts	0	0	0	0	0	0	0	0
3 YR AVG MAINTENANCE COSTS								
Mainline	\$3565	\$3564	\$1127	\$740	\$740	\$2115	\$2336	\$2336
Shoulders	\$89	\$86	\$51	\$31	\$33	\$93	\$105	\$105
Structure	\$960	\$957	\$0	\$0	\$0	\$0	\$0	\$0
Other	\$7042	\$7043	\$4669	\$4099	\$4096	\$15460	\$17145	\$17145
Total	\$11654	\$11657	\$5847	\$4870	\$4870	\$17668	\$19587	\$19587
Total 3 Year Main Contract Amount	\$533	\$536	\$310	\$208	\$208	\$699	\$774	\$774
TRAFFIC								
Current ADT	2524	2524	2524	2524	965	965	965	965
Projected 20 Year ADT	3892	3892	3892	3892	1488	1488	1488	1488
Number Of Trucks	106	106	106	106	141	141	141	141
CRASHES								
Weighted Crash Rate	0.00	0.22	0.00	0.00	0.77	1.70	0.00	0.00
Number Of Fatal	0	0	0	0	0	0	0	0
Number Of Injury	0	0	0	0	0	1	0	0
Number Of Property Damage	0	1	0	0	2	0	0	0
MAINLINE IMPROVEMENTS								
Project Programmed								
PCN								
Improvement Type	CHIP SEAL	MILL AC OVLY	MILL AC OVLY	MILL AC OVLY	COLD IP RCYL	MILL AC OVLY	COLD IP RCYL	COLD IP RCYL
Estimated Improvement Cost	\$14	\$120	\$780	\$170	\$791	\$124	\$244	\$244
Improvement Year	2028	2031	2029	2033	2032	2029	2030	2030
PCN								
Improvement Type	FULL DEP REC	ROUTE/SEAL	ROUTE/SEAL	ROUTE/SEAL	NOT OPTIMZED	ROUTE/SEAL	ROUTE/SEAL	ROUTE/SEAL
Estimated Improvement Cost	\$323	\$1	\$7	\$1	\$0	\$2	\$3	\$3
Improvement Year	2037	2033	2031	2035	0	2031	2032	2032

HIGHWAY 262
Beginning MRM = 359.00
Ending MRM = 361.00

RURAL



HIGHWAY 262
Beginning MRM = 359.00
Ending MRM = 361.00



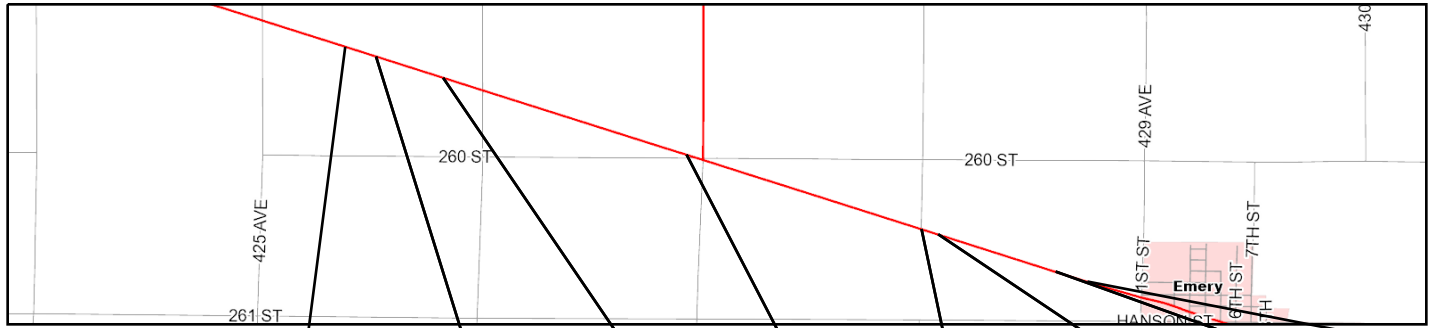
IDENTIFICATION								
Federal Aid System	STP	STP	STP	STP	STP	STP	STP	STP
Funding Category	MINA	MINA	MINA	MINA	MINA	MINA	MINA	MINA
Functional Classification	R-MI A	R-MI A	R-MI A	R-MI A	R-MI A	R-MI A	R-MI A	R-MI A
Direction								
Beginning MRM	359.00	360.00	360.00	360.00	360.00	361.00	361.00	361.00
MRM Displacement	0.935	0.408	0.516	0.752	0.976	0.317	0.377	0.377
Segment Length	0.487	0.108	0.236	0.224	0.336	0.060	0.337	0.337
Year Built	1934	1990	2012	1934	1990	1934	2012	2012
Year Last Improved	2012	2012	2012	2012	2012	2012	2012	2012
Year Last Sealed	2021	2021	2021	2021	2021	2021	2021	2021
ROADWAY CONDITIONS								
Surface Condition Index	4.39	4.50	4.59	4.30	4.31	4.55	4.70	4.70
Roughness Index	4.62 (21)	4.73 (21)	4.82 (21)	4.73 (21)	4.80 (21)	4.76 (21)	4.88 (21)	4.88 (21)
ASPHALT INDEX VALUES								
Transverse Cracking	4.65 (21)	5.00 (21)	5.00 (21)	4.50 (21)	4.52 (21)	4.90 (21)	4.90 (21)	4.90 (21)
Fatigue Cracking	4.73 (21)	5.00 (21)	5.00 (21)	4.60 (21)	4.62 (21)	4.60 (21)	5.00 (21)	5.00 (21)
Patching/Patch Deterioration	5.00 (21)	5.00 (21)	5.00 (21)	5.00 (21)	5.00 (21)	5.00 (21)	5.00 (21)	5.00 (21)
Block Cracking	4.53 (21)	5.00 (21)	5.00 (21)	4.30 (21)	4.30 (21)	5.00 (21)	5.00 (21)	5.00 (21)
Rut Index	4.38 (21)	4.33 (21)	4.43 (21)	4.43 (21)	4.49 (21)	4.53 (21)	4.60 (21)	4.60 (21)
Rut Depth(Inches) AVG/MAX	0.20 / 0.30	0.20 / 0.30	0.20 / 0.20	0.20 / 0.20	0.10 / 0.20	0.10 / 0.20	0.10 / 0.20	0.10 / 0.20
CONCRETE INDEX VALUES								
D-Cracking/ASR								
Joint Spalling								
Corner Cracking								
Faulting / CRCP Block Cracking								
Joint Seal Damage								
Punchouts								
STRUCTURAL DESCRIPTION								
Surface Type	AONC	THK	TONS	AONC	THK	AONC	TONS	TONS
Shoulder Type - Primary/Secondary	AC/N/D	AC/N/D	AC/NONE	AC/N/D	AC/N/D	AC/N/D	AC/NONE	AC/NONE
Surface Width	24 (024)	24 (024)	24 (024)	24 (024)	24 (024)	24 (024)	24 (024)	24 (024)
Left Shoulder Width-Prim/Sec	2 (02) / 0 (0)	2 (02) / 0 (0)	4 (04) / 0 (0)	2 (02) / 0 (0)	2 (02) / 0 (0)	2 (02) / 0 (0)	4 (04) / 0 (0)	4 (04) / 0 (0)
Right Shoulder Width-Prim/Sec	2 (02) / 0 (0)	2 (02) / 0 (0)	4 (04) / 0 (0)	2 (02) / 0 (0)	2 (02) / 0 (0)	2 (02) / 0 (0)	4 (04) / 0 (0)	4 (04) / 0 (0)
Widths-RDWY/ROW-Predom/Min	028/100/100	028/100/100	032/100/100	028/100/100	028/100/100	028/100/100	032/100/100	032/100/100
Roadbed Layer 1	2021/TS3/0.4	2021/TS3/0.4	2021/TS3/0.4	2021/TS3/0.4	2021/TS3/0.4	2021/TS3/0.4	2021/TS3/0.4	2021/TS3/0.4
Roadbed Layer 2	2015/TS3/0.4	2015/TS3/0.4	2015/TS3/0.4	2015/TS3/0.4	2015/TS3/0.4	2015/TS3/0.4	2015/TS3/0.4	2015/TS3/0.4
Roadbed Layer 3	2014/TC/0.0	2014/TC/0.0	2014/TC/0.0	2014/TC/0.0	2014/TC/0.0	2014/TC/0.0	2014/TC/0.0	2014/TC/0.0
Roadbed Layer 4	2012/AJ3/2.0	2012/AJ3/2.0	2012/AJ3/2.0	2012/AJ3/2.0	2012/AJ3/2.0	2012/AJ3/2.0	2012/AJ3/2.0	2012/AJ3/2.0
Roadbed Layer 5	1990/AG3/2.5	1990/AG3/4.5	2012/AJ3/2.0	1990/AG3/2.5	1990/AG3/4.5	1990/AG3/2.5	2012/AJ3/2.0	2012/AJ3/2.0
Roadbed Layer 6	1934/CR1/9.0	1990/BU4/8.0	2012/BU4/12.0	1934/CR1/9.0	1990/BU4/8.0	1934/CR1/9.0	2012/BU4/12.0	2012/BU4/12.0
Roadbed Layer 7		1990/BU3/8.0			1990/BU3/8.0			
Roadbed Layer 8								
Roadbed Layer 9								
Roadbed Layer 10								
Roadbed Layer 11								
Roadbed Layer 12								
Number Of Structures	0	0	0	0	0	0	0	0
Number Of Box Culverts	0	0	0	0	0	0	0	0
3 YR AVG MAINTENANCE COSTS								
Mainline	\$3082	\$9120	\$4504	\$4746	\$4182	\$12317	\$3154	\$3154
Shoulders	\$138	\$407	\$203	\$214	\$188	\$550	\$142	\$142
Structure	\$0	\$0	\$0	\$0	\$0	\$0	\$0	\$0
Other	\$19144	\$31963	\$15843	\$16692	\$18515	\$90567	\$23240	\$23240
Total	\$22363	\$41491	\$20551	\$21652	\$22884	\$103433	\$26537	\$26537
Total 3 Year Main Contract Amount	\$967	\$2509	\$1237	\$1304	\$8185	\$89733	\$23015	\$23015
TRAFFIC								
Current ADT	965	965	965	965	965	965	965	965
Projected 20 Year ADT	1488	1488	1488	1488	1488	1488	1488	1488
Number Of Trucks	141	141	141	141	141	141	141	141
CRASHES								
Weighted Crash Rate	0.57	0.00	0.00	0.00	0.00	0.00	0.57	0.57
Number Of Fatal	0	0	0	0	0	0	0	0
Number Of Injury	0	0	0	0	0	0	0	0
Number Of Property Damage	1	0	0	0	0	0	0	1
MAINLINE IMPROVEMENTS								
Project Programmed								
PCN								
Improvement Type	MILL AC OVLY	FULL DEP REC	FULL DEP REC	MILL AC OVLY	COLD IP RCYL	RECON AC	CHIP SEAL	CHIP SEAL
Estimated Improvement Cost	\$188	\$75	\$148	\$86	\$180	\$130	\$11	\$11
Improvement Year	2030	2031	2037	2029	2030	2034	2028	2028
PCN								
Improvement Type	ROUTE/SEAL	ROUTE/SEAL	ROUTE/SEAL	ROUTE/SEAL	ROUTE/SEAL	ROUTE/SEAL	FULL DEP REC	FULL DEP REC
Estimated Improvement Cost	\$4	\$1	\$1	\$1	\$2	\$1	\$212	\$212
Improvement Year	2032	2033	2039	2031	2032	2036	2038	2038

HIGHWAY 262
Beginning MRM = 361.00
Ending MRM = 365.00

RURAL



HIGHWAY 262
Beginning MRM = 361.00
Ending MRM = 365.00



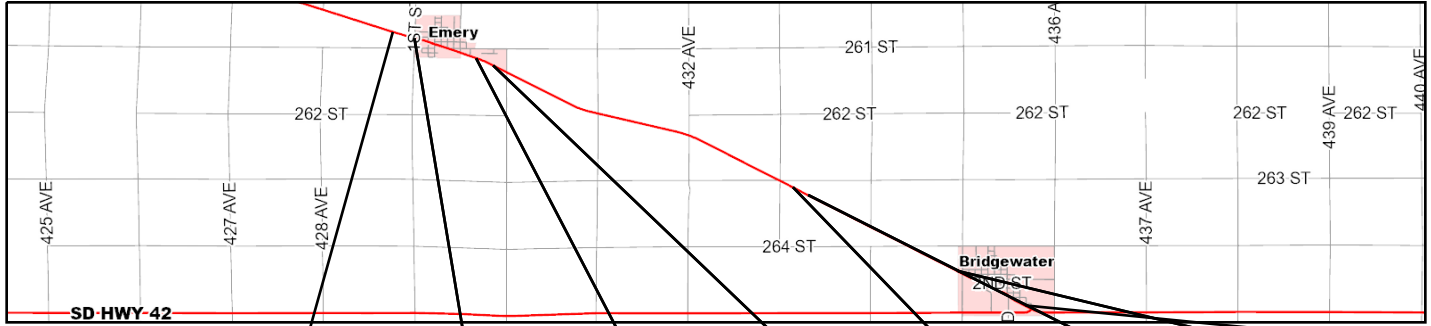
IDENTIFICATION									
Federal Aid System	STP	STP	STP	STP	STP	STP	STP	STP	STP
Funding Category	MINA	MINA	MINA	MINA	MINA	MINA	MINA	MINA	MINA
Functional Classification	R-MI A	R-MI A	R-MI A	R-MI A	R-MI A	R-MI A	R-MI A	R-MI A	R-MI A
Direction									
Beginning MRM	361.00	361.00	362.00	363.00	364.00	364.00	364.00	365.00	365.00
MRM Displacement	0.714	0.866	0.188	0.402	0.565	0.647	0.250	0.156	0.156
Segment Length	0.152	0.331	1.201	1.158	0.082	0.580	0.156	0.156	0.156
Year Built	1934	1990	1934	1936	1936	1936	1936	1936	1936
Year Last Improved	2012	2012	2012	2012	2012	2012	2012	2012	2012
Year Last Sealed	2021	2021	2021	2021	2021	2021	2021	2021	2021
ROADWAY CONDITIONS									
Surface Condition Index	4.39	4.37	4.29	3.72	3.47	3.76	4.26	4.26	4.26
Roughness Index	4.78 (21)	4.84 (21)	4.72 (21)	4.43 (21)	4.74 (21)	4.44 (21)	4.59 (21)	4.59 (21)	4.59 (21)
ASPHALT INDEX VALUES									
Transverse Cracking	4.90 (21)	4.63 (21)	4.29 (21)	4.56 (21)	4.50 (21)	4.67 (21)	4.90 (21)	4.90 (21)	4.90 (21)
Fatigue Cracking	4.60 (21)	4.60 (21)	4.31 (21)	4.25 (21)	5.00 (21)	3.75 (21)	4.60 (21)	4.60 (21)	4.60 (21)
Patching/Patch Deterioration	5.00 (21)	5.00 (21)	5.00 (21)	5.00 (21)	5.00 (21)	4.77 (21)	4.60 (21)	4.60 (21)	4.60 (21)
Block Cracking	4.30 (21)	4.30 (21)	4.42 (21)	3.46 (21)	3.00 (21)	3.80 (21)	4.30 (21)	4.30 (21)	4.30 (21)
Rut Index	4.64 (21)	4.63 (21)	4.43 (21)	4.41 (21)	4.22 (21)	4.36 (21)	4.26 (21)	4.26 (21)	4.26 (21)
Rut Depth(Inches) AVG/MAX	0.10 / 0.10	0.10 / 0.20	0.20 / 0.30	0.20 / 0.40	0.20 / 0.20	0.20 / 0.40	0.20 / 0.30	0.20 / 0.30	0.20 / 0.30
CONCRETE INDEX VALUES									
D-Cracking/ASR									
Joint Spalling									
Corner Cracking									
Faulting / CRCP Block Cracking									
Joint Seal Damage									
Punchouts									
STRUCTURAL DESCRIPTION									
Surface Type	AONC	THK	AONC	AONC	AONC	AONC	AONC	AONC	AONC
Shoulder Type - Primary/Secondary	AC/N/D	AC/N/D	AC/N/D	AC/N/D	AC/N/D	AC/N/D	AC/N/D	AC/N/D	AC/N/D
Surface Width	24 (024)	24 (024)	24 (024)	24 (024)	24 (024)	24 (024)	24 (024)	24 (024)	24 (024)
Left Shoulder Width-Prim/Sec	2 (02) / 0 (0)	2 (02) / 0 (0)	2 (02) / 0 (0)	2 (02) / 0 (0)	2 (02) / 0 (0)	2 (02) / 0 (0)	2 (02) / 0 (0)	2 (02) / 0 (0)	2 (02) / 0 (0)
Right Shoulder Width-Prim/Sec	2 (02) / 0 (0)	2 (02) / 0 (0)	2 (02) / 0 (0)	2 (02) / 0 (0)	2 (02) / 0 (0)	2 (02) / 0 (0)	2 (02) / 0 (0)	2 (02) / 0 (0)	2 (02) / 0 (0)
Widths-RDWY/ROW-Predom/Min	028/100/100	028/100/100	028/100/100	028/100/100	028/100/100	028/100/100	028/100/100	028/100/100	028/100/100
Roadbed Layer 1	2021/TS3/0.4	2021/TS3/0.4	2021/TS3/0.4	2021/TS3/0.4	2021/TS3/0.4	2021/TS3/0.4	2021/TS3/0.4	2021/TS3/0.4	2021/TS3/0.4
Roadbed Layer 2	2015/TS3/0.4	2015/TS3/0.4	2015/TS3/0.4	2015/TS3/0.4	2015/TS3/0.4	2015/TS3/0.4	2015/TS3/0.4	2015/TS3/0.4	2015/TS3/0.4
Roadbed Layer 3	2014/TC/0.0	2014/TC/0.0	2014/TC/0.0	2014/TC/0.0	2014/TC/0.0	2014/TC/0.0	2014/TC/0.0	2014/TC/0.0	2014/TC/0.0
Roadbed Layer 4	2012/AJ3/2.0	2012/AJ3/2.0	2012/AJ3/2.0	2012/AJ3/2.0	2012/AJ3/2.0	2012/AJ3/2.0	2012/AJ3/2.0	2012/AJ3/2.0	2012/AJ3/2.0
Roadbed Layer 5	1990/AG3/2.5	1990/AG3/4.5	1990/AG3/2.5	1988/AG3/2.5	2012/AJ3/2.0	1988/AG3/2.5	2012/AJ3/2.0	1988/AG3/2.5	2012/AJ3/2.0
Roadbed Layer 6	1934/CR1/9.0	1990/BU4/8.0	1934/CR1/9.0	1936/CR1/9.0	2012/BU4/2.0	1936/CR1/9.0	2012/BU4/2.0	1936/CR1/9.0	2012/BU4/2.0
Roadbed Layer 7		1990/BU3/8.0			2012/CS/0.0		2012/CS/0.0		2012/CS/0.0
Roadbed Layer 8					1936/CR1/9.0		1936/CR1/9.0		1936/CR1/9.0
Roadbed Layer 9									
Roadbed Layer 10									
Roadbed Layer 11									
Roadbed Layer 12									
Number Of Structures	0	0	0	0	0	0	0	0	0
Number Of Box Culverts	0	0	0	0	0	0	0	0	0
3 YR AVG MAINTENANCE COSTS									
Mainline	\$6993	\$3822	\$1278	\$1278	\$1280	\$1278	\$1276	\$1276	\$1276
Shoulders	\$316	\$172	\$57	\$57	\$61	\$57	\$58	\$58	\$58
Structure	\$0	\$0	\$0	\$0	\$0	\$0	\$0	\$0	\$0
Other	\$51526	\$27402	\$6180	\$6180	\$6183	\$6179	\$6179	\$6179	\$6179
Total	\$58836	\$31396	\$7515	\$7515	\$7512	\$7516	\$7513	\$7513	\$7513
Total 3 Year Main Contract Amount	\$51026	\$27837	\$3931	\$3931	\$3927	\$3931	\$3929	\$3929	\$3929
TRAFFIC									
Current ADT	965	965	965	965	965	965	965	965	965
Projected 20 Year ADT	1488	1488	1488	1488	1488	1488	1488	1488	1488
Number Of Trucks	141	141	141	144	144	144	144	144	144
CRASHES									
Weighted Crash Rate	0.00	0.00	2.36	0.98	0.00	0.00	0.00	0.00	0.00
Number Of Fatal	0	0	0	0	0	0	0	0	0
Number Of Injury	0	0	1	0	0	0	0	0	0
Number Of Property Damage	0	0	2	2	0	0	0	0	0
MAINLINE IMPROVEMENTS									
Project Programmed									
PCN									
Improvement Type	MILL AC OVLY	COLD IP RCYL	MILL AC OVLY	MILL AC OVLY	RECON AC	MILL AC OVLY	MILL AC OVLY	MILL AC OVLY	MILL AC OVLY
Estimated Improvement Cost	\$58	\$177	\$465	\$448	\$178	\$224	\$60	\$60	\$60
Improvement Year	2029	2031	2027	2026	2033	2025	2029	2029	2029
PCN									
Improvement Type	ROUTE/SEAL	ROUTE/SEAL	ROUTE/SEAL	ROUTE/SEAL	NOT OPTIMIZED	ROUTE/SEAL	ROUTE/SEAL	ROUTE/SEAL	ROUTE/SEAL
Estimated Improvement Cost	\$1	\$2	\$9	\$9	\$0	\$4	\$1	\$1	\$1
Improvement Year	2031	2033	2029	2028	0	2027	2031	2031	2031

HIGHWAY 262
Beginning MRM = 365.00
Ending MRM = 372.64

RURAL



HIGHWAY 262
Beginning MRM = 365.00
Ending MRM = 372.64



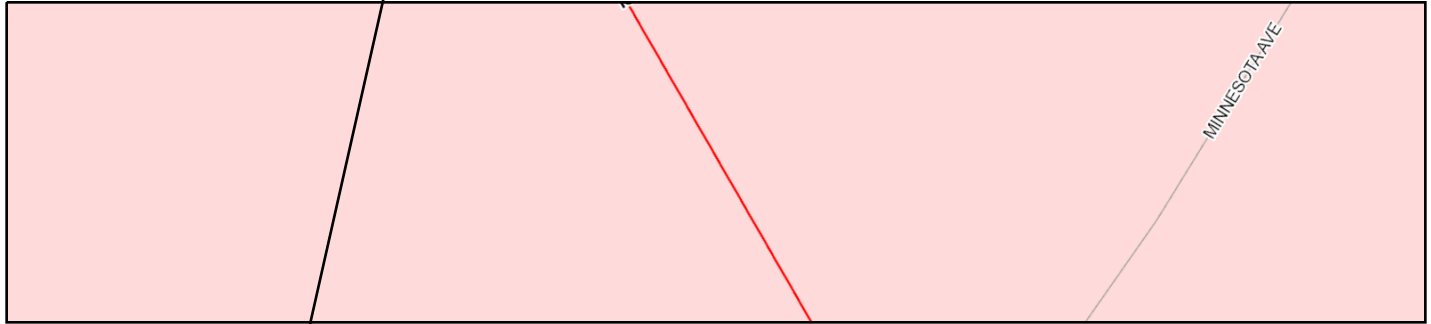
IDENTIFICATION								
Federal Aid System	STP	STP	STP	STP	STP	STP	STP	STP
Funding Category	MINA	MINA	MINA	MINA	MINA	MINA	MINA	MUNI
Functional Classification	R-MI A	R-MI A	R-MI A	R-MI A	R-MI A	R-MI A	R-MI A	R-MI A
Direction								
Beginning MRM	365.00	365.65	366.31	366.31	370.00	370.00	370.00	372.64
MRM Displacement	0.406	0.006	0.075	0.292	0.400	0.603	0.000	0.000
Segment Length	0.254	0.738	0.217	3.787	0.203	1.995	0.908	0.908
Year Built	1936	1938	2012	1938	1938	1938	1938	1938
Year Last Improved	2012	2012	2012	2012	2012	2012	2012	2012
Year Last Sealed	2021	2021	2021	2021	2021	2021	2021	2021
ROADWAY CONDITIONS								
Surface Condition Index	4.02	4.22	4.41	3.87	4.34	3.67	3.80	
Roughness Index	4.61 (21)	4.66 (21)	4.75 (21)	4.70 (21)	4.68 (21)	4.67 (21)	4.59 (21)	
ASPHALT INDEX VALUES								
Transverse Cracking	4.50 (21)	4.75 (21)	4.90 (21)	4.61 (21)	4.90 (21)	4.50 (21)	4.58 (21)	
Fatigue Cracking	4.60 (21)	4.67 (21)	5.00 (21)	4.40 (21)	5.00 (21)	4.60 (21)	4.29 (21)	
Patching/Patch Deterioration	5.00 (21)	5.00 (21)	5.00 (21)	5.00 (21)	5.00 (21)	5.00 (21)	5.00 (21)	
Block Cracking	3.80 (21)	4.04 (21)	4.30 (21)	3.58 (21)	4.30 (21)	3.26 (21)	3.68 (21)	
Rut Index	4.54 (21)	4.58 (21)	4.58 (21)	4.49 (21)	4.42 (21)	4.46 (21)	4.48 (21)	
Rut Depth(Inches) AVG/MAX	0.10 / 0.30	0.10 / 0.40	0.10 / 0.20	0.10 / 0.30	0.20 / 0.20	0.20 / 0.30	0.10 / 0.30	
CONCRETE INDEX VALUES								
D-Cracking/ASR								
Joint Spalling								
Corner Cracking								
Faulting / CRCP Block Cracking								
Joint Seal Damage								
Punchouts								
STRUCTURAL DESCRIPTION								
Surface Type	AONC	AONC	TONS	AONC	AONC	AONC	AONC	AONC
Shoulder Type - Primary/Secondary	AC/N/D	AC/N/D	AC/NONE	AC/N/D	AC/N/D	AC/N/D	AC/N/D	AC/N/D
Surface Width	24 (024)	24 (024)	24 (024)	24 (024)	24 (024)	24 (024)	24 (024)	24 (024)
Left Shoulder Width-Prim/Sec	2 (02) / 0 (0)	6 (02) / 0 (0)	3 (03) / 0 (0)	2 (02) / 0 (0)	2 (02) / 0 (0)	2 (02) / 0 (0)	2 (02) / 0 (0)	2 (02) / 0 (0)
Right Shoulder Width-Prim/Sec	2 (02) / 0 (0)	6 (02) / 0 (0)	3 (03) / 0 (0)	2 (02) / 0 (0)	2 (02) / 0 (0)	2 (02) / 0 (0)	2 (02) / 0 (0)	2 (02) / 0 (0)
Widths-RDWY/ROW/Min	028/100/100	036/66/066	030/100/100	028/100/100	028/100/100	028/100/100	028/66/066	
Roadbed Layer 1	2021/TS3/0.4	2021/TS3/0.4	2021/TS3/0.4	2021/TS3/0.4	2021/TS3/0.4	2021/TS3/0.4	2021/TS3/0.4	2021/TS3/0.4
Roadbed Layer 2	2015/TS3/0.4	2015/TS3/0.4	2015/TS3/0.4	2015/TS3/0.4	2015/TS3/0.4	2015/TS3/0.4	2015/TS3/0.4	2015/TS3/0.4
Roadbed Layer 3	2014/TC/0.0	2014/TC/0.0	2014/TC/0.0	2014/TC/0.0	2014/TC/0.0	2014/TC/0.0	2014/TC/0.0	2014/TC/0.0
Roadbed Layer 4	2012/AJ3/2.0	2012/AJ3/2.0	2012/AJ3/2.0	2012/AJ3/2.0	2012/AJ3/2.0	2012/AJ3/2.0	2012/AJ3/2.0	2012/AJ3/2.0
Roadbed Layer 5	1988/AG3/2.5	1988/AG3/2.5	2012/AJ3/2.0	1988/AG3/2.5	2012/AJ3/2.0	1988/AG3/2.5	1988/AG3/2.5	1988/AG3/2.5
Roadbed Layer 6	1936/CR1/9.0	1938/CR1/9.0	2012/BU4/12.0	1938/CR1/9.0	2012/BU4/2.0	1938/CR1/9.0	1938/CR1/9.0	1938/CR1/9.0
Roadbed Layer 7					2012/CS/0.0			
Roadbed Layer 8					1938/CR1/9.0			
Roadbed Layer 9								
Roadbed Layer 10								
Roadbed Layer 11								
Roadbed Layer 12								
Number Of Structures	0	0	0	1	0	0	0	0
Number Of Box Culverts	0	0	0	1	0	1	0	0
3 YR AVG MAINTENANCE COSTS								
Mainline	\$1280	\$1278	\$0	\$1069	\$1069	\$1069	\$1069	\$1069
Shoulders	\$59	\$57	\$0	\$48	\$49	\$48	\$48	\$48
Structure	\$0	\$0	\$0	\$158	\$158	\$158	\$157	\$157
Other	\$6181	\$6180	\$0	\$3911	\$3911	\$3911	\$3911	\$3911
Total	\$7516	\$7515	\$0	\$5186	\$5187	\$5185	\$5186	\$5186
Total 3 Year Main Contract Amount	\$3929	\$3931	\$0	\$293	\$296	\$293	\$293	\$293
TRAFFIC								
Current ADT	965	965	965	762	752	752	752	878
Projected 20 Year ADT	1488	1488	1488	1144	1126	1126	1315	1315
Number Of Trucks	144	144	144	98	96	96	88	88
CRASHES								
Weighted Crash Rate	0.57	2.27	0.00	2.28	0.00	1.46	2.50	
Number Of Fatal	0	0	0	0	0	0	0	
Number Of Injury	0	0	0	2	0	1	1	
Number Of Property Damage	1	4	0	6	0	1	1	
MAINLINE IMPROVEMENTS								
Project Programmed								
PCN								
Improvement Type	MILL AC OVLY	MILL AC OVLY	FULL DEP REC	MILL AC OVLY	MILL AC OVLY	MILL AC OVLY	RECON AC	
Estimated Improvement Cost	\$98	\$285	\$136	\$1508	\$78	\$772	\$5274	
Improvement Year	2027	2031	2034	2029	2032	2029	2029	
PCN								
Improvement Type	ROUTE/SEAL	ROUTE/SEAL	NOT OPTIMZED	ROUTE/SEAL	ROUTE/SEAL	ROUTE/SEAL	NOT OPTIMZED	
Estimated Improvement Cost	\$2	\$6	\$0	\$31	\$1	\$16	\$0	
Improvement Year	2029	2033	0	2031	2034	2031	0	

HIGHWAY 262
 Beginning MRM = 373.44
 Ending MRM = 373.44

RURAL



HIGHWAY 262
 Beginning MRM = 373.44
 Ending MRM = 373.44



IDENTIFICATION							
Federal Aid System	STP						
Funding Category	MUNI						
Functional Classification	R-MI A						
Direction							
Beginning MRM	373.44						
MRM Displacement	0.066						
Segment Length	0.078						
Year Built	1938						
Year Last Improved	2014						
Year Last Sealed	2017						
ROADWAY CONDITIONS							
Surface Condition Index	4.19						
Roughness Index	4.10 (21)						
ASPHALT INDEX VALUES							
Transverse Cracking	4.90 (21)						
Fatigue Cracking	4.60 (21)						
Patching/Patch Deterioration	5.00 (21)						
Block Cracking	4.30 (21)						
Rut Index	4.19 (21)						
Rut Depth(Inches) AVG/MAX	0.20 / 0.40						
CONCRETE INDEX VALUES							
D-Cracking/ASR							
Joint Spalling							
Corner Cracking							
Faulting / CRCP Block Cracking							
Joint Seal Damage							
Punchouts							
STRUCTURAL DESCRIPTION							
Surface Type	AONC						
Shoulder Type - Primary/Secondary	AC/N/D						
Surface Width	24 (024)						
Left Shoulder Width-Prim/Sec	11 (11) / 0 (0)						
Right Shoulder Width-Prim/Sec	11 (11) / 0 (0)						
Widths-RDWY/ROW-Predom/Min	046/66/066						
Roadbed Layer 1	2017/TS3/0.4						
Roadbed Layer 2	2016/TC/0.0						
Roadbed Layer 3	2014/AJ3/2.0						
Roadbed Layer 4	1988/AG3/0.5						
Roadbed Layer 5	1988/AG3/2.0						
Roadbed Layer 6	1938/CR1/9.0						
Roadbed Layer 7							
Roadbed Layer 8							
Roadbed Layer 9							
Roadbed Layer 10							
Roadbed Layer 11							
Roadbed Layer 12							
Number Of Structures	0						
Number Of Box Culverts	0						
3 YR AVG MAINTENANCE COSTS							
Mainline	\$1064						
Shoulders	\$51						
Structure	\$154						
Other	\$3910						
Total	\$5179						
Total 3 Year Main Contract Amount	\$295						
TRAFFIC							
Current ADT	887						
Projected 20 Year ADT	1328						
Number Of Trucks	87						
CRASHES							
Weighted Crash Rate	0.00						
Number Of Fatal	0						
Number Of Injury	0						
Number Of Property Damage	0						
MAINLINE IMPROVEMENTS							
Project Programmed							
PCN							
Improvement Type	CHIP SEAL						
Estimated Improvement Cost	\$2						
Improvement Year	2024						
PCN							
Improvement Type	RECON AC						
Estimated Improvement Cost	\$666						
Improvement Year	2031						