



Photo By South Dakota Tourism

Cancer treatment centers in South Dakota are prepared to meet your needs.

Please use this pamphlet as a guide to explore treatment and support services. Feel free to contact any of the cancer treatment centers for more information.

**The South Dakota Comprehensive Cancer Control coalition is dedicated to reducing the burden that cancer places on patients and their families.**

*“We cannot direct the wind but we can adjust the sails.”  
~Author Unknown*

*For additional information contact:*  
South Dakota Comprehensive Cancer Control Program (SD CCCP)  
c/o St. Mary’s Foundation  
801 E Sioux Avenue  
Pierre, SD 57501  
605.224.3595

*e-mail: [info@cancersd.com](mailto:info@cancersd.com)  
website: [www.cancersd.com](http://www.cancersd.com)*



Photo By South Dakota Tourism

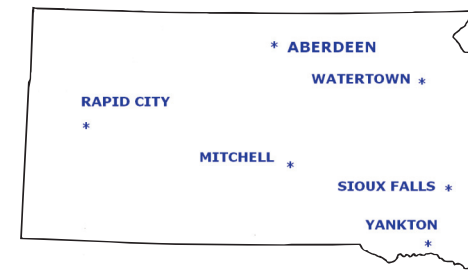


# Cancer... What Next?



Photo By South Dakota Tourism

## A Guide to South Dakota Cancer Treatment Resources



*You have been diagnosed with cancer...*

### *What Next?*

A cancer diagnosis can be overwhelming to patients and family members. South Dakota cancer treatment centers offer several options to meet your unique treatment needs.

Understanding the types of services offered is the first step in choosing a treatment center. Making an informed decision about treatment is important. Your needs during treatment may include access to programs such as social services, patient navigation, assistance with medications, financial help and travel support.

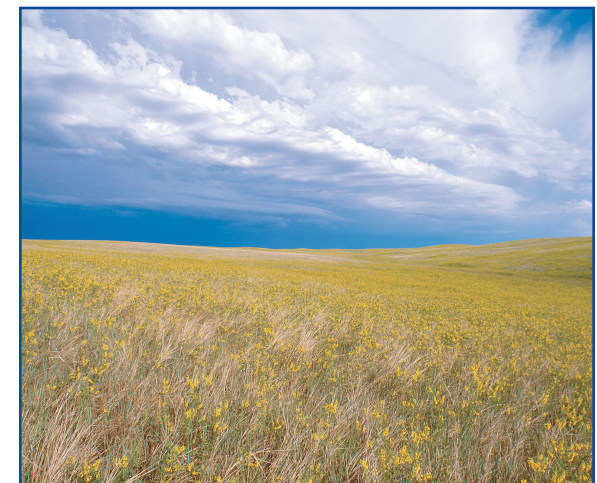


Photo By South Dakota Tourism

# South Dakota Cancer Treatment Centers

## Avera Cancer Institute

1000 E 23rd Street  
Phone: 605-322-3000 Fax: 605-322-3250

## Avera Medical Group Radiation Oncology

1417 S Minnesota Ave  
Phone: 605-332-3000 Fax: 605-332-3201  
Sioux Falls, SD 57105  
www.AveraCancer.org  
Also Located in: Brookings, Pierre & Platte

## Avera Queen of Peace Cancer Center

605 North Foster  
Mitchell, SD 57301  
Phone: 605-995-5756 Fax: 605-995-5750  
www.averaqueenofpeace.org

## Avera Sacred Heart Cancer Center


1115 W 9th St  
Yankton, SD 57078  
Phone: 605-668-8850 Fax: 605-668-9448  
www.averasacredheart.org

## John T. Vucurevich Regional

Cancer Care Institute  
Rapid City Regional Hospital  
353 Fairmont Blvd  
Rapid City, SD 57701  
Phone: 605-719-2300 Fax: 605-719-2310  
www.rcrh.org

## Avera St. Luke's Cancer Care Center

305 South State St  
Aberdeen, SD 57401  
Phone: 605-622-5500 Fax: 605-622-5042  
www.averastlukes.org

	Chemotherapy	Radiation Therapy	Access to Clinical Research	Financial Services	Home Health Services	Hospice Services	Nutritional Assessment and Assistance	Patient Navigators	Social Services	Housing/Lodging Accommodations	Transportation
Avera Cancer Institute Avera Medical Group Sioux Falls	P	P	P	P	A	P	P	P	P	P	A
Avera Queen of Peace Cancer Center - Mitchell	P	P	A	A	P	P	P	A	P	P	A
Avera Sacred Heart Cancer Center - Yankton	P	P	P	P	P	P	P	A	P	P	A
Avera St. Lukes Cancer Center Aberdeen	P	P	P	A	A	A	P	A	A	P	A
Veterans Administration Medical Center - Sioux Falls	P	A	P	A	A	A	P	P	P	P	P
John T. Vucurevich Regional Cancer Care - Rapid City	P	P	P	A	A	A	P	P	A	P	A
McHale Institute Sioux Falls	P	A	P	P	A	A	P	A	A	A	A
Prairie Lakes Cancer Center Watertown	P	P	P	A	A	A	P	A	A	A	A
Sanford Cancer Center Hematology/Oncology Radiation Oncology - Sioux Falls	P	P	P	P	P	P	P	P	A	P	A

\*A = Access to \*P = Provides

## Department of Veterans Affairs (VA)

### Medical Center

2501 W 22nd St  
Sioux Falls, SD 57117  
Phone: 605-336-3230  
www.siouxfalls.va.gov

### McHale Institute Cancer & Hematology

3720 W 69th St  
Sioux Falls, SD 57108  
Phone: 605-339-4464 Fax: 605-339-0309  
www.mchaleinstitute.com  
Also located in: Armour, Huron, Parker & Watertown

### Prairie Lakes Cancer Center

401 9th Ave NW  
Watertown, SD 57201  
Phone: 605-882-6800 Fax: 605-882-6835  
www.prairielakes.com

### Sanford Cancer Center Oncology & Hematology

www.sanfordcancercare.org  
Phone: 605-328-8000 Fax: 605-328-8001  
**Radiation Oncology**  
Phone: 605-328-6000 Fax: 605-328-6045  
www.sanfordhealth.org  
1309 West 17th Street  
Sioux Falls, SD 57105